



**Whaitua te**

**Whanganui-a-Tara**



# National Policy Statement for *Freshwater Management*

**Maintain or improve water quality** above national bottom-lines

Set freshwater **objectives and limits** (for water takes and discharges)

Underpinned by **community deliberations**



**Whaitua te**

**Whanganui-a-Tara**



*“Kei te putake o Whaitua te Whanganui Tara tona mauri mana motuhake... hei oranga mo te katoa i noho ki konei”.*

The mauri of Whaitua Te Whanganui a Tara and the communities who live within it are nurtured, strengthened and able to flourish.

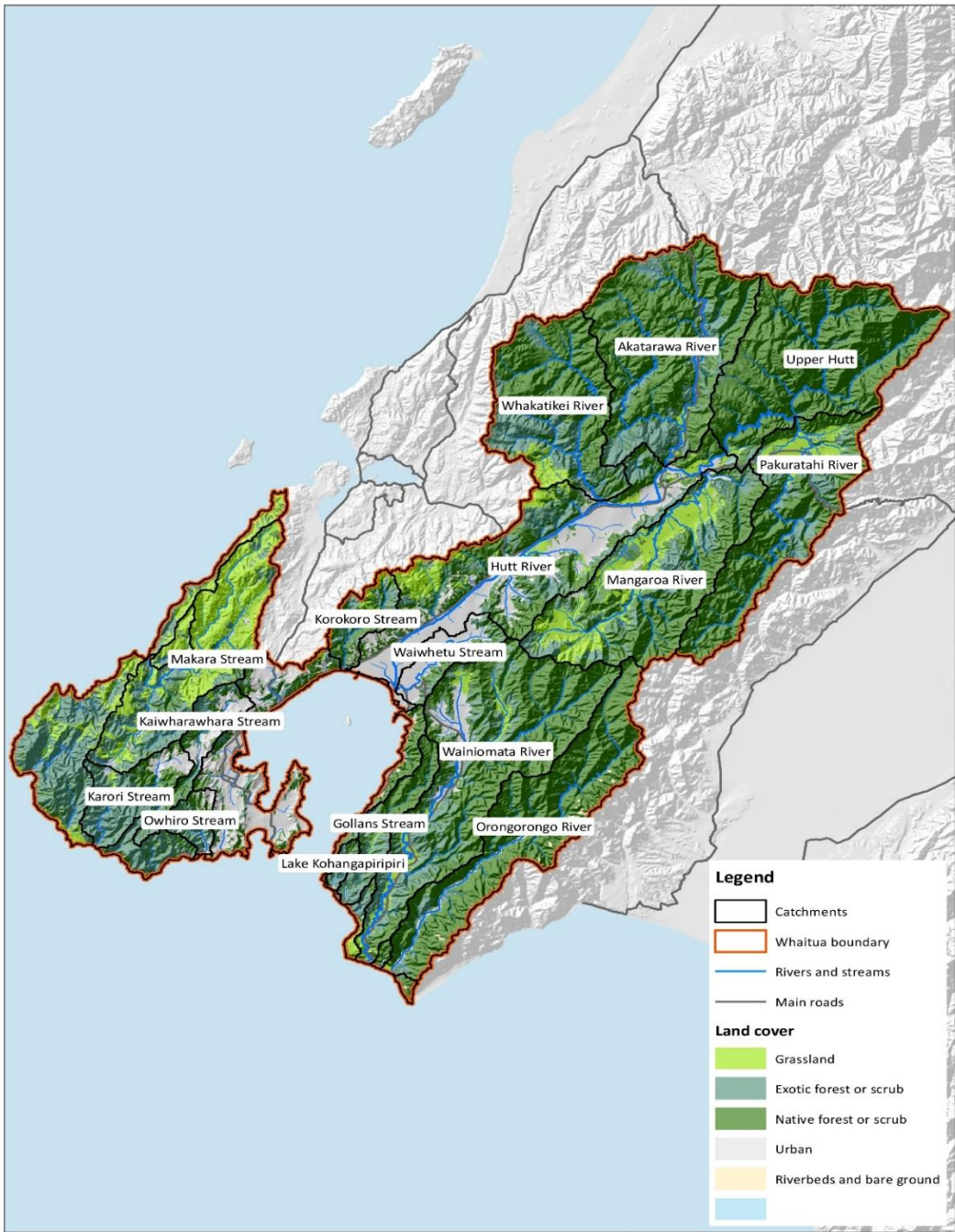
# Kawa Framework

*Te Kawa Ora*

*Te Kawa Wai*

*Ko Te Kawa Tiaki*

*Te Kawa Honohono*



# The Committee

Greater Wellington Regional Council

Wellington City Council

Hutt City Council

Upper Hutt City Council

Te Upoko Taiao – Natural Resources  
Committee

Taranaki Whānui

Ngāti Toa Rangatira

Community members



# Timeline

	FEB 2019	MAR	APRIL	MAY	JUNE	JULY	AUG	SEPT	OCT	NOV	DEC	FEB 2020	MAR	APRIL	MAY	JUNE	JULY	AUG	SEPT	OCT	NOV	DEC	2021				
POLICY DIAGRAM TIMELINE	TUĀPAPA-KAWA, PRINCIPLES, TIKANGA																										
	100 YEAR VISION																										
	PROBLEM DEFINITIONS, BARRIERS, SYSTEMIC ISSUES																										
	KNOWLEDGE AND EVIDENCE BASE																										
	OPTIONS EVALUATION AND ANALYSIS																										
	LEVERS FOR CHANGE																										
												OUTCOMES															
																							MONITORING AND EVALUATION 2021 AND BEYOND				
PROJECT PLAN TIMELINE	ESTABLISHMENT																										
	UNDERSTANDING THE WHAITUA																										
												DELIBERATION & PRIORITISATION															
												INTEGRATION & DECISION-MAKING															
																							DESIGN & LAUNCH WIP				





# Community engagement

The image shows a screenshot of a Facebook page for 'Whaitua Te Whanganui-a-Tara'. The page layout includes a left-hand navigation menu, a main content area with a post, and a right-hand sidebar with additional information.

**Page Header:** Whaitua Te Whanganui-a-Tara @Whaitua

**Navigation Menu (Left):** Home, About, Photos, Community, Posts

**Post:**

- Author:** Whaitua Te Whanganui-a-Tara (30 July at 15:03)
- Text:**

Drop everything, water needs you!

If our communities work together we can take action now to change its' story, so water is honoured, and we are healthy together. To shape the action that is needed, we want to hear how water is part of your life and what you imagine in a better future.

Go to our online engagement page to share your views about your local waterway or share your story on the map. Or tell us what you think in the comments below.
- Image:** A stylized graphic showing a river flowing through a landscape with green hills and a grid pattern, representing a waterway or map.
- Text below image:** HAVEYOURSAY.GW.GOV.T.NZ  
**'Drop everything, water needs you.'**  
Whaitua Te Whanganui-a-Tara needs the communities of Wellington,...
- Engagement:** 5 likes, 7 shares
- Buttons:** Like, Comment, Share

**Right Sidebar:**

- Learn More** (button)
- Send Message** (button)
- Community** (tab)
- Hours** (Always open)
- Page transparency** (See More)
- Page created** – 17 July 2019
- People** (54 likes)

# Themes

- Three waters network – wastewater, stormwater, drinking water
- Water allocation
- Urban development and growth
- Farming, forestry, lifestyle blocks, wetland
- Link with flood control activities

*Biophysical science, mātauranga Māori, community views/values*

# Questions / discussion

