



keep the Eastbourne Community Board

Background

I am Haiying, a relatively new resident living in the Bay for 10 years.

I'm not a member of the local board, I believe it's important to get involved and contribute to our community.

- In my view, we should keep the community board
- To ensure our local voices are heard
- To gather feedback before even decisions are made on important projects.
- To the Council's policy advisers:

I hope our direct voices can contribute to strengthening our local democracy

Case

Like any other locals, I want to protect our land, keep it safe, functional and beautiful.

I walk along the bench very often, when I saw the long fence and damaged landscape on 20 August, I felt so painful, I decided to record it, and post what I see and my thoughts on local community notice board.

From the locals' so many feedback, I know majority of residents don't think it is right, we believe the works can be done better. so I use this chance Let our voices and our concerns to be heard first.

While I know the council's power is limited, but at least consult with the locals to design a more reasonable fence, or discuss with locals before making this plan.





Like any other locals, I love walk along the bench, we always want to protect our land, keep it safe, functional and beautiful.

On 20 August, when I was walking, that is some of I saw.









I saw the long fence and damaged landscape, I felt so **painful**, I decided to record it, and post what I see and my thoughts on **local community notice board FB Page**



Haiying Shi

🌟 994 points 1d · 🗨️



The New “Great Wall “of Eastbourne Coastal,
They are making it more difficult for people to enjoy the
area as we once did. Where are the gates?



You, Malcolm Sime and 66 others

145 comments



All 68



31



19



9



9

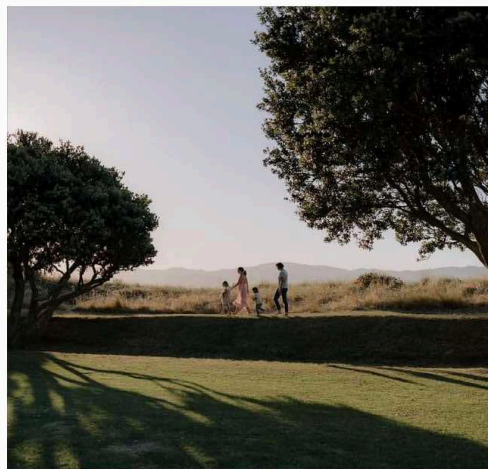
- <https://www.facebook.com/share/p/E6D9kfDG9uGGPLRK/?mibextid=K35XfP>



Tess Irihapeti Dunford

🌟 1,166 points 6 Aug · 📷

See ya later dunes. 😞 This beautiful view of the dunes will soon be gone behind another man made monstrosity. On one hand, I'm all for creating a safe habitat for our precious penguins to nest in. They deserve protection and a chance to thrive. But on the other hand, it saddens me to see this beautiful natural landscape disrupted by human intervention. The view that once brought so mu... See more



All 74

👍 43

😞 26

👄 3

❤️ 2

https://www.facebook.com/groups/EastbourneCommunityNoticeBoard/permalink/2651436948372342/?rdid=CKcPCQTDMQw7YHfL&share_url=https%3A%2F%2Fwww.facebook.com%2Fshare%2Fp%2FzGLV8pnXnwuzgE2t%2F

👍👄 You, Catherine Healy and 72 others

80 comments



No gate here though, by the children's playground - despite that it has an obvious path that leads straight to beach 🙄

👍🙄🙄 You and 4 others

2 comments



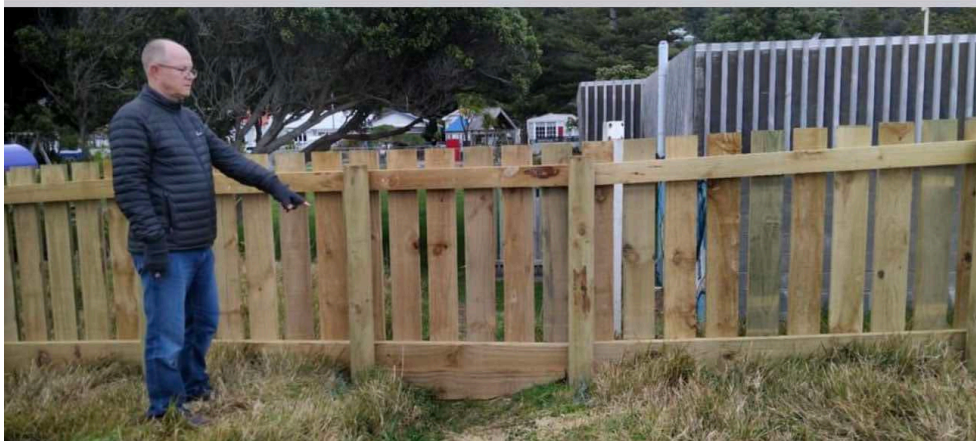
Like



Comment



Copy



No gate here either despite it also having a direct path to the beach.

🙄👍🙄 You and 4 others

12 comments



Like



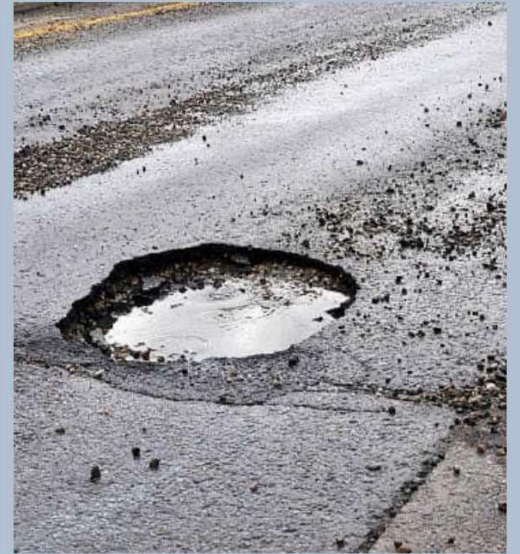
Comment



Copy

https://www.facebook.com/groups/EastbourneCommunityNoticeBoard/permalink/664700580379312/?rdid=33TLfAt8F7BHGv5F&share_url=https%3A%2F%2Fwww.facebook.com%2Fshare%2Fp%2FhP8zeNN8q1vFyT5G%2F

- https://www.facebook.com/groups/EastbourneCommunityNoticeBoard/permalink/2664698317046205/?rdid=JgV3KezWLW37F6HX&share_url=https%3A%2F%2Fwww.facebook.com%2Fshare%2Fp%2FQLKnuL2R1jkAf73b%2F



  You and 20 others

10 comments

 Like

 Comment

 Copy

Top comments ▾



William Kircher 🌟 815 points

The sad truth is that this has changed things forever. The fence is a monstrosity. A needless barrier between the land and the sea. What insane person came up with this idea? Why has that entire park grounds suddenly been walled in? What happens when it's tagged? So we can't just walk onto the beach anymore? How much did it cost? What's the freakin point of walling in our kids from the beach?

1d [Like](#) [Reply](#)

32



Haiying Shi [Author](#) 🌟

[William Kircher](#) So far that public input was treated more as a formality, with no real opportunity for change. We have to face the daily wrong-doing.

1d [Like](#) [Reply](#)

9

Some Comments



Amanda Mallett 🌟 1,845 points

[Haiying Shi](#) it was absolutely a formality as they had already agreed the terms.

1d [Like](#) [Reply](#)

2



Alan Pitts

[Haiying Shi](#) If Lower Hutt is a democracy how come a fence has been put up against the people of Eastbourne wishes? Oh yea we have a Socialist/Green council that tried while



Francis Harkin

I want to ride to the ridge where the west commences
And gaze at the moon till I lose my senses
And I can't look at hovels and I can't stand fences
Don't fence me in

1d [Like](#) [Reply](#)

17 



Denise Pitts  3,205 points

Hutt City Council spending unnecessary money again. That's why are rates keep going up. Unless people vote these people out including the mayor and put people in who know how to prioritise this us what you are going to get. Next time there is a local election think about it. Too many greenies on the council. Needs a balance.

1d [Like](#) [Reply](#)

15 



Jane Athena  4,197 points

[Denise Pitts](#) yup

1d [Like](#) [Reply](#)



William Kircher 🌟 815 points

And what happens when a ball gets kicked over the fence???

1d [Like](#) [Reply](#)

3



Jason Danial Grimmatt

That isnt the best on the eye. Its looks nasty

1d [Like](#) [Reply](#)

3



Beverley Burnett 🌟 1,903 points

I'm sure that if there are not enough gates people will make there own. There is a known phenomenon in recreational parks called desire lines

20h [Like](#) [Reply](#)

2



Dusanka Mladenovic

Oooh, so wrong and so bad design, without consultation. Is it a preparation that someone some day can start charging access to the beach and sea. It needs to go down.

1d [Like](#) [Reply](#)

2



Georgina Tucker

I live on Marine Parade and hate the fence . I'm hoping it will grow on me ! As for the penguins we have some living under our house so they will always have a home with us . Beach not necessarily required! 😡

1d [Like](#) Reply

15

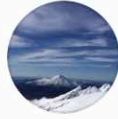


Barry Ray

[Georgina Tucker](#) how will they get back to the sea now? They're trapped on the land side of the fence that's purpose built to stop penguins passing

1d [Like](#) Reply

3



Amanda Mallett ★ 1,845 points

Whats saddest of all is that there is no gate in the playground area to the beach, the well worn path between the pool and slide that goes to the beach and yacht club is blocked off. To get to the beach from the playground now you have to walk round the bushes from the playground to the playing fields and up to a gate, did they not consider families at the playground may want to get to the beach? It's a busy path for visitors to the bays in summer especially with so many picnicing.

and.. if you're walking a dog along the top of the playfields beside the fence so you can see the view when you walk, you now have to go all the way down to the road... round the pool and past the public toilets to get back to the beach as there is no access to the yacht club and Rona Bay Wharf with a dog on lead from th... See More

1d [Like](#) [Reply](#)

11   



Anne Wood ★ 1,949 points

Unbelievable. Such a huge waste of money and totally spoils a beautiful natural landscape. I know there was supposedly consultation but I never knew about this until it happened. Did the community board endeavour to convey the impact this was going to have to us somehow? It is really a major blot on the landscape.

1d [Like](#) Reply

10



Barry Ray

[Anne Wood](#) I think maybe at first they tried but then were forced to agree to the fence or their words were quashed or they thought they should not fight , to be honest I'm not sure which way that went. But it's one of two things. They either agreed to it, or they couldn't stop it. Either way, they've been ineffective in stopping the fence going ahead. They try to make out it's because I won't put in submissions

1d [Like](#) Reply

2

View 3 replies...

along here plus spraying and removal of all the marram grass so many people worked hard to plant over many years...disgusting and unnecessary.

1d [Like](#) [Reply](#)

14   



Gerry Philpott


They have gone completely over the top and spending truckloads of money on something that is totally unnecessary.

Eastbourne is a caring society and would never hurt but protect penguins

1d [Like](#) [Reply](#)

13 



Elisabeth Hector  1,745 points

If this is an experiment as stated prior to protect penguins, if the penguins do not use the nesting boxes over next couple of years surely we can just petition for it to come down?

1d [Like](#) [Reply](#)

10 

From local resident: Kurt Renner

My thoughts.

- 1. Eastbourne **residents largely do not want the fence.**
- 2. We understand the theory of creating a penguin area and that it was part of resource consent for building shared path.
- 3. Perhaps the way forward is for the community **to install cameras and monitor the beach area to collect hard data so to give facts to arguments...** how many penguins do nest in the fenced area. How many dogs still go to the area. How many people etc.
- 4. Run it for **6 months and share the data with community and council.** If not being used by penguins then start a **petition** to have fence removed. Also a **social media campaign** to get it removed.
- By the community running cameras and data collection **the council can't hide behind cost** and unable to engage. Then when petition to remove the fence the community could offer to remove it and bring all the fence palings **and framing back to the council storage** area if they want it.
- **ALL at NO cost to Council.** A fully funded solution by the community for the community.

Keep my view,

keep Eastboure community board:

- To ensure our local voices are heard
- To gather feedback before decisions are made on important projects.
- Eastbourne has its unique feature, we need local boards take even more actions look after this pearl of lower Hutt, please consider not let it go.

To our local Council's policy advisers:

I hope our direct voices can contribute to strengthening our democracy

Haiying Shi
Resident of York Bay