

SILVERSTREAM LANDFILL LISTED SPECIAL WASTE DISPOSAL DECLARATION



IMPORTANT INFORMATION

1. Please complete this Disposal Declaration in full.
2. 24 hours' prior notification is required for landfill disposal of the material providing that these wastes are Listed Special Wastes as defined in the Hutt City Council Landfill Waste Disposal Guide. Telephone Landfill Manager (04) 563-6952.
3. This notification must be given to the kiosk attendant on arrival at the landfill.
4. Random sampling and analysis of wastes will be carried out to ensure compliance with the Disposal Declaration.

Waste Generator to complete

Waste Generator Name	
Waste Type	
Approx Quantity	
I declare that the contents of this load to be disposed are listed special wastes	
Signature	Date

Transporter to complete

Transport Company	Vehicle No.
Driver Signature	Date

Landfill Staff to complete

Kiosk operator signature	Date
--------------------------	------

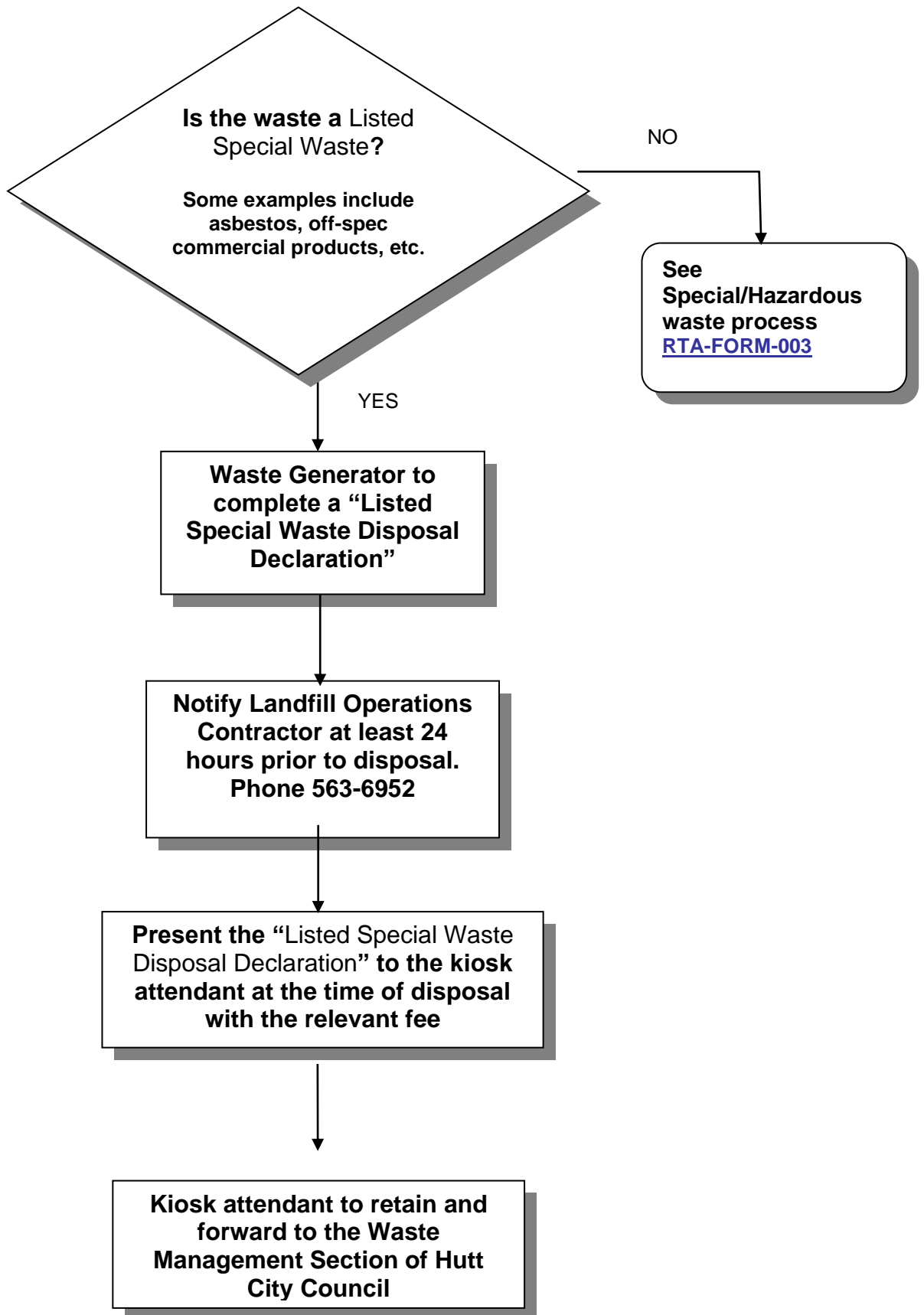
PRIVACY STATEMENT

We collect, use and disclose personal information you provided:

- for the purpose(s) specified at the point of collection
- to communicate with you for council purposes
- to tell you about products and services we believe may be of interest to you, and
- to enable us to maintain our records and carry out statutory functions.

You have the right to ask for a copy of any personal information we hold about you, and to ask for it to be corrected if you think it is wrong. If you'd like to ask for a copy of your information, or have it corrected, please contact us at contact@huttcity.govt.nz or come in and see us at 30 Laings Road, Lower Hutt 5010. For more information see our [privacy statement](#).

LISTED SPECIAL WASTES



NOTES ON SPECIAL WASTE

Special wastes are defined as those requiring special handling, burial, pre-treatment or testing before they can be accepted for landfill disposal. Special waste may include:

- Sludge waste.
- Waste from an industrial or manufacturing process.
- Waste from a pollution control process.
- Contaminated residues or articles from the cleaning up of a facility generating, storing, treating, recycling or disposing of waste

Special wastes that **cannot** be visually identified or verified as non-hazardous wastes will be treated as hazardous wastes and an “Application for Disposal of Special/Hazardous Waste” Form [RTA-FORM-003](#) must be completed before these wastes are accepted for disposal. Such wastes will frequently require pre-acceptance testing for chemical composition to determine whether they are within the acceptance criteria for hazardous waste outlined in this guide.

Special wastes that **can** be visually verified as non-hazardous and/or suitable for landfill disposal are categorised as Listed Special wastes, and will be accepted upon completion of a “Listed Special waste Disposal Declaration” Form [RTA-FORM-012](#).

Listed Special Wastes include:

- Asbestos waste from whatever source including building demolition, maintenance or cleaning, wallboard, roofing, wall and ceiling spray coverings and pipe insulation. The asbestos must be thoroughly wetted (or modified by a bonding agent or coating) and packaged, transported and disposed of in accordance with Government Regulations (see Guide to Health and Safety in Employment Asbestos regulations, 1998 attached).
- Commercial products or chemicals and their containers that are off-specification, outdated or unusable, provided they are visually identifiable and non-hazardous. Examples include off-specification food or beverage products and electrical goods, maximum 20 litres per load.
- Empty containers that once held hazardous substances regulated under the Hazardous Substances and New Organisms Act 1996. Such containers must be empty according to label directions, triple rinsed with an appropriate solvent or cleaned by an equivalent method and rendered unusable. All drums must be crushed prior to disposal.
- Commercial wastes that do not meet the requirements of general waste and loads of over 10 tonnes. These include wastes from non-manufacturing, retail and wholesale businesses, warehousing, service and transportation activities**.
- Construction and demolition wastes that do not meet the requirements of general waste and loads of over 10 tonnes**.
- Industrial and manufacturing non-hazardous wastes that do not meet the requirements of general waste and loads of over 10 tonnes, e.g., carbon black used in tyre manufacturing.
- Wire rope and steel formed sections that are longer than 1 metre and loads of over 10 tonnes**.
- Bulky industrial and commercial items such as large construction materials or components
- Commercially sensitive non-hazardous materials that require witnessed burials (e.g., police files, confidential records).
- Aesthetically disturbing materials such as dead animals
- Dust. Any waste that would normally be classified as a non-hazardous solid waste that is in dust form, including materials such as cereal dusts, carpet and wool dusts and carbon black/soot.
- Sludges from septic tanks, food service grease traps, laundromats and car washes as long as they meet Council’s sludge criteria (i.e., no free liquid present, greater than 20% solids content, a slump of less than 200mm). Sludges that have been combined with hazardous wastes are not included as Listed Special wastes and an “Application for Disposal of Special/Hazardous Waste” must be completed.

- Sewage treatment plant waste, including milliscreenings and sludge as long as they meet Council's sludge criteria and the USEPA Class A or B guidelines where applicable. (Note: Only water treatment plant sludge is accepted at the Wainuiomata Landfill).
- Plastic materials, including film plastics and solid foams and resins**.
- Specific loads of equipment which may contain minor quantities of chemicals removed from service.

** if they are not reusable or recyclable