

# Infrastructure

*Our vision for Lower Hutt is to create a city where everyone thrives.*

To do this, we need to protect and improve our natural environment and grow our city in a way that is sustainable and meets the needs of all of us who call Lower Hutt home. One of the ways we do this is through the District Plan, which sets the rules for how we use land and develop our city.

The District Plan is going through a top-to-bottom review. How do we protect what we love and provide what we need as a city? That's where you come in – feedback on the draft plan is open until 15 December 2023. Following that, we'll have a statutory submission process on a proposed plan in 2024.

From protecting the environment to managing natural hazards and preserving our built heritage, there's a lot to consider. The District Plan is an important document that influences the future of our city, so find out more and have your say!

**Find out more at [hutt.city/dpreview](https://hutt.city/dpreview)**

Lower Hutt has a range of important infrastructure, some of which is critical and life supporting for people locally, regionally and even nationwide.

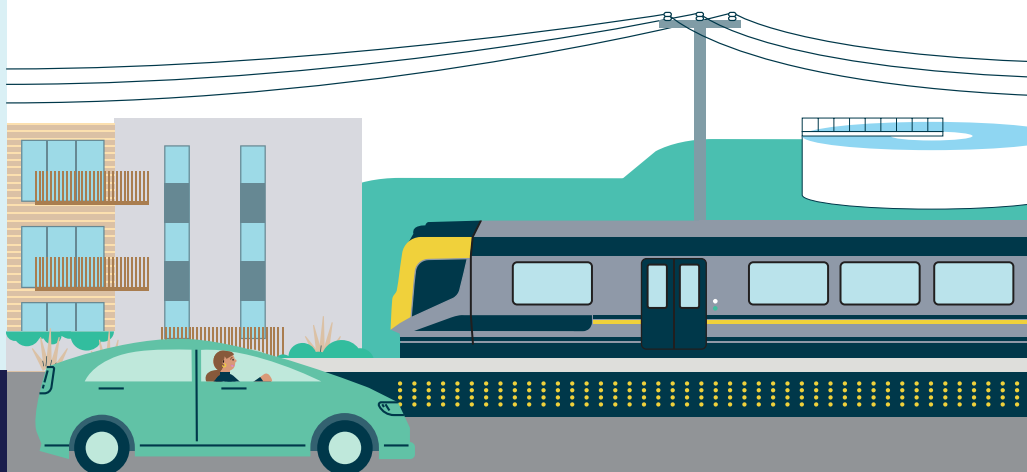
Examples include:

- ➔ The transport network (including all roads, shared paths, cycleways, rail and bus infrastructure).
- ➔ Water supply, sewerage and stormwater mains, reservoirs and treatment plants.
- ➔ Telecommunication and radiocommunication networks.
- ➔ Electricity supply.

We rely on our infrastructure, but its construction, operation and maintenance can have adverse effects on people and the environment. The Infrastructure chapter includes controls on the scale and location of infrastructure to manage the effects on the environment.

The chapter also includes provisions to protect infrastructure. These include rules for new infrastructure located in areas particularly vulnerable to natural hazards.

When new housing is built close to existing infrastructure, complaints about things like light, noise or odour can potentially impact its continuing operations, which is known as a reverse sensitivity effect. The chapter includes provisions to protect some infrastructure from this happening.



## How much is changing?



Little

A lot

## Understanding our District Plan review

### What are we proposing?

- ➔ In most circumstances the operation, maintenance and repair of existing infrastructure will be permitted.
- ➔ Consent may be required for upgraded or new infrastructure depending on the type of infrastructure, its size and location.
- ➔ There are limitations on infrastructure being located in:
  - Areas of Outstanding Natural Features and Landscapes
  - Areas of High, Very High or Outstanding Coastal Character
  - High hazard areas
  - Areas of historic heritage or sites of significance to Māori.
- ➔ Standards will control the size of buildings and structures, earthworks and noise related to infrastructure.
- ➔ Controls on housing being located too close to electricity transmission lines and towers.

### FAQs

#### What sort of things can I give feedback on?

- ➔ Whether the rules relating to infrastructure are too permissive or too restrictive.
- ➔ Whether there are any types of infrastructure that are not sufficiently provided for in the chapter.
- ➔ Suggestions for promoting active or public transport.
- ➔ What do you think about the areas being proposed for limitations on infrastructure? Are there other areas that should be included?

#### What new infrastructure is planned in Lower Hutt?

The Infrastructure chapter does not include plans for new or upgraded infrastructure. However, the chapter's rules may determine whether a resource consent is needed. The Long Term Plan and Annual Plan provide details of Council's planned infrastructure.

**We're keen to hear from you**

Go to [hutt.city/DPSurvey](https://hutt.city/DPSurvey) or drop off your submission at any Hutt City Council neighbourhood hub.

**HUTT CITY**  
TE AWA KAIRANGI