



Wainuiomata Public Art Brief

Playable Sculpture and Basketball Court Mural



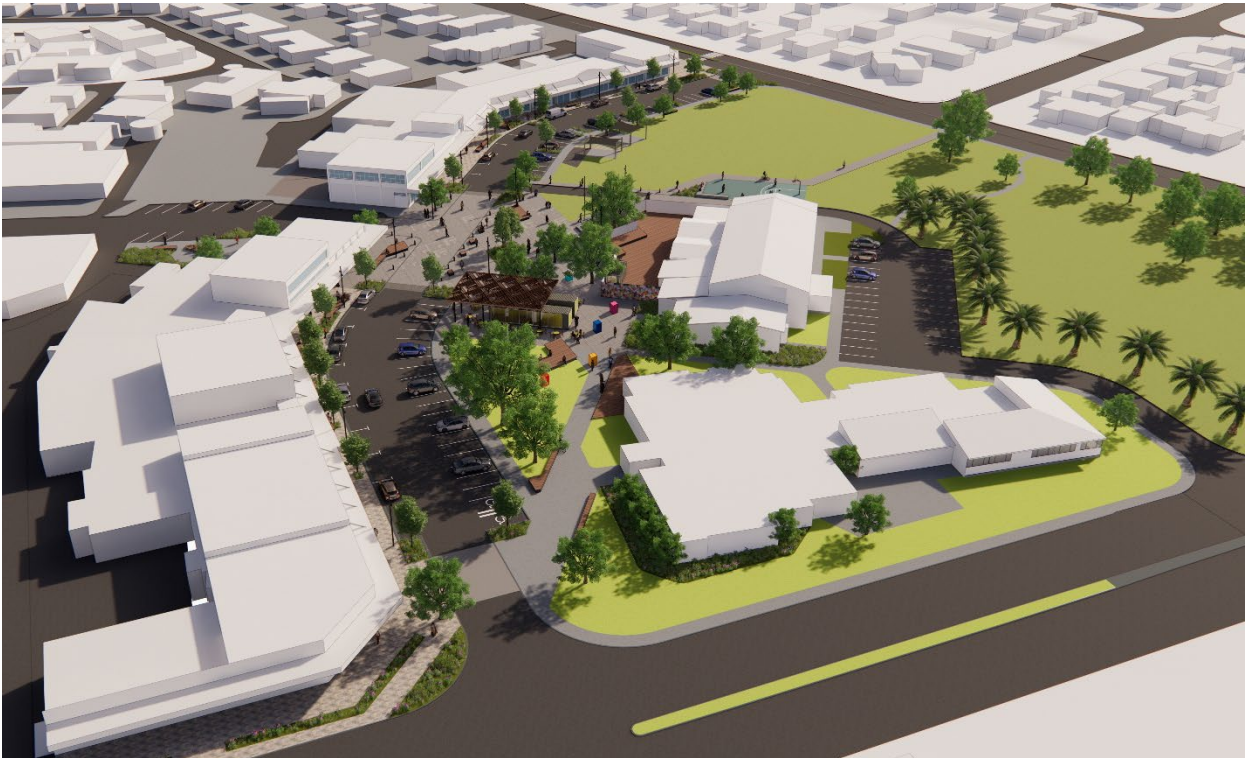
1. Background

1.1 Overview of the Project

The redevelopment of Wainuiomata Town Centre aims to bring to life the community's vision for our Town Centre. The project focuses on creating a vibrant shopping street together with a new square / civic 'heart' surrounding the ANZAC Memorial.

As well as being a thriving, safe and attractive centre, it is important the space reflects Wainuiomata, its environment, and people. Through the creation of a strong cultural narrative, thoughtful design, public art and community input, the

space should be thought-provoking, culturally vibrant, enjoyable, and inspiring – a space that is distinctive and uniquely Wainuiomata.



1.2 Aims of this commission

Hutt City Council is calling out to local artists, or artists who have a strong connection to Wainuiomata, for expressions of interest in developing and installing a playable sculpture in the public space on Queens Street in front of the Wainuiomata Neighbourhood Hub and a mural for the half Basketball Court (and accompanying backboard) beside the Community Hall.

The project aim is for the mural on the basketball court to be completed by June 2023. The timing for the sculpture is to be negotiated.

In terms of overall outcomes from a Council perspective we are looking for the following:

1. That the sculpture and mural responds
 - a. to the Cultural overlay for Wainuiomata,
 - b. and the public realm design
2. That the sculpture is playable (it considers the local young people that spend a lot of time in this public space)
3. That the artist(s) selected have connections to Wainuiomata and if possible are Wainuiomata or Lower Hutt based.

Please refer to the documents listed below available at hutt.city/wainuiart for further background details on this project:

- Wainuiomata Cultural Expression
- Wainuiomata Public Art Brief
- Wainuiomata Development Plan
- Wainuiomata Town Centre Framework and Streetscape Plan
- Wainuiomata Spatial Plan Feedback Report
- Wainuiomata Town Centre Concept Presentation

1.3 Project Structure and Communications

The wider project, and this brief, have been developed by Hutt City Council in collaboration with local stakeholders and community representatives. A Selection Panel comprised of Mana Whenua, community members, and Council representatives will select a short list of artists from the initial expressions of interest. These artists will then be asked to develop a conceptual design. Artists are not required to complete an expression of interest for both pieces of Public Art.

The shortlisted artist for each of the public art pieces, will be offered a small fee to develop an initial concept for further selection.

Following artist selection and the development of the Public Art final sign off from the Selection Panel, the funding will then be released.

The project will be coordinated by Cam Kapua-Morrell and Claire Allan from Hutt City Council, and they will serve as the main points of contact in the day-to-day running of the Public Art process.

Relationship with Hutt City Council consultant team

As the project progresses, the artist(s) for both pieces of Public Art will collaborate closely with Council, will be informed by the cultural overlay, cultural expression, and the Council consultant team to integrate concepts into the proposed space.

This consultant team consists of:

- Len Hetet and Tiaki Dahm – Cultural overlay and cultural expression (Mana Whenua)
- Dan Males and Michael Davis – Local (Landscape Architecture)
- Sid Wade – Wade Consulting (Civil Engineering)

- Antony Forlong – CBP (Structural Engineering)
- Bernard Chapman – Maltbys (Quantity Surveying)

2. Considerations for the playable sculpture



In addition to the requirements listed previously, the playable sculpture should take into consideration the following points:

The cultural narrative for Wainuiomata (refer to separate document)

Ambience:

- Functional issues including the use of the civic 'heart' for a variety of purposes.
- The existing function of the civic 'heart' as a memorial
- The size and scale of elements, and whether there is one or several elements.
- Ensuring key views in and out of the shopping street are both clear and vibrant.
- The use of the centre during day and night, and how this may influence lighting.
- Creating a strong relationship between Te Ara Raukura, the hall, the hub and surrounding spaces.

Practical considerations:

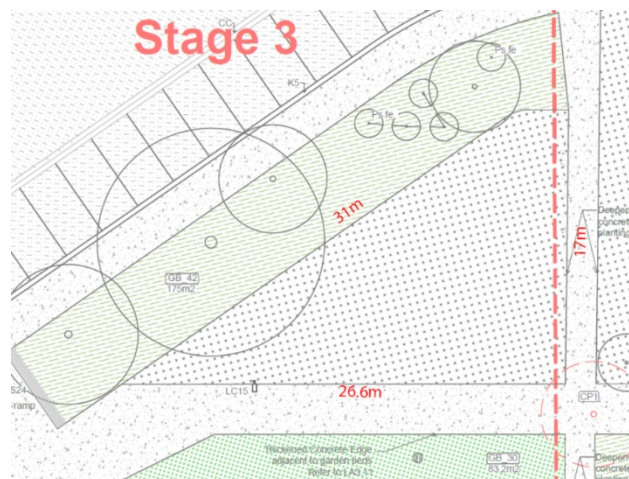
- Standards and codes that must be adhered to. This may influence scale and materiality of interventions.
- Accessibility and safety for all.
- Safety of the installation of the work should be considered.
- Site specific climatic conditions, such as sunshade, wind and water flows.
- Structural and engineering requirements (our consultant team can provide some support here).
- Maintenance and cleaning of any intervention and the broader space (lawn mowing, weeding, surface sweeping, graffiti removal etc.).
- The anticipated life span of any artworks, and anticipated replacement or maintenance requirements.

Materials:

- Exposure to environmental conditions such as wind, rain, and UV light.
- Durability of materials.
- Vandal resistance and robustness.
- Opportunities to support local industries by sourcing materials from Wainuiomata.
- Safety requirements of specific materials.
- The relationship of the work to other surfaces and finished, colours and textures within the space.
- Sustainability (e.g., ensuring sustainability of materials used).
- Opportunities to recycle or repurpose existing and available materials.

Dimension of the area the sculpture would be placed in:

- The sculpture would be positioned on grass.



2.1 Risk assessment and safety

Council is obliged to provide and maintain, so far as is practicable, a working environment for the businesses of Wainuiomata and members of the public, that is safe and without risk to health and wellbeing. As a condition of this Contract, Council requires that any Artist that may be engaged to perform works on its behalf will always identify and exercise all necessary precautions for the health and safety of all persons who may be affected by the works.

The Artist will inform themselves of all health and safety policies, procedures or measures implemented or adapted by Council.

3. Considerations for the basketball court mural



In addition to the requirements listed under section 1, the mural on the half basketball court should take into consideration the following points:

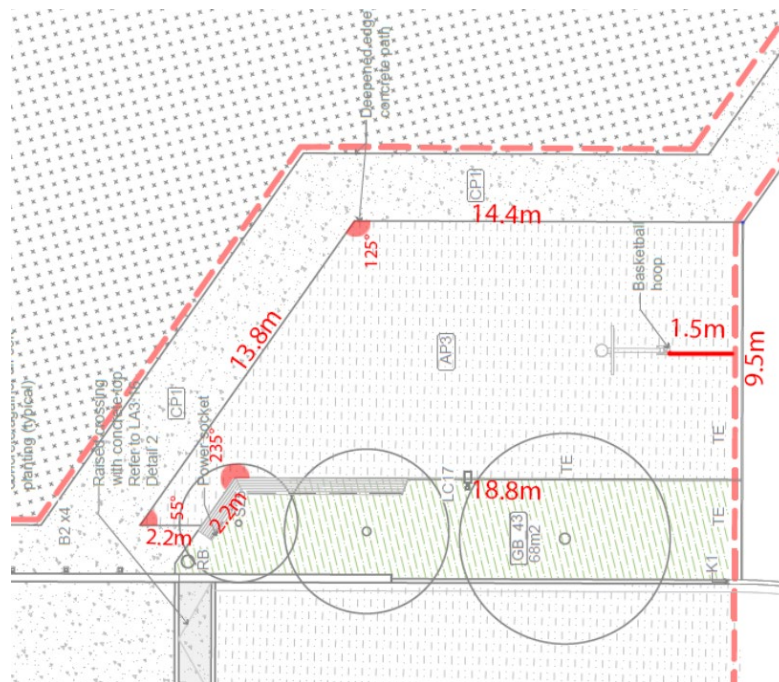
The cultural narrative for Wainuiomata (refer to separate document)

Ambience:

- Functional issues with regards to playing basketball on the half court alongside the mural.

Dimensions:

- The size and scale of the court (see below)
- Backboard dimensions 1050 high x 1800 wide (for more details see attached document at the end).



Design requirements:

- For this piece of work, the artist will be required to develop a design for the half court and the backboard of the hoop.
- Once the design is completed the materials and installation work will be handled by the project team. The work will not be painted directly into the asphalt but imprinted into a material that will be overlaid onto the court.

4. Expressions of Interest

EOI Requirements

- PDF file submission of your proposal (including previous artworks, concept drawings, draft budget, timeline, logistics, assistance or support needed, and key considerations as mentioned above)
- PDF file 1-page Curriculum Vitae

Artist Selection Considerations:

- That the artist(s) selected have connections to Wainuiomata and if possible are Wainuiomata or Lower Hutt based
- If you are an emerging or practicing artist in installation, sculptural, mural work or can adapt your current practice.
- How your creative practice incorporates a [mātauranga](#) Māori approach.
- Your willingness to apply creative practice to a collaborative space to inform the collective vision.

Proposals will be reviewed by a Selection Panel including Mana Whenua and Wainuiomata Marae, and Council Officers:

- Aroha Puketapu – Wainuiomata Marae, Mana Whenua
- Linda Olsen – Wainuiomata Marae, Mana Whenua
- Len Hetet – Mana Whenua Advisor
- Cam Kapua-Morrell – Council Officer

Submissions should be received no later than 12pm (midday), Sunday 21 May 2023 via hutt.city/wainuiart.

5. Artist Fees

- Basketball court and backboard design artist fee will be up to \$5000 and will be negotiated directly with the successful artist.
- Playable Sculpture artist fee will be by negotiation depending on the design and build factors along with experience. There may be an opportunity for an experienced sculpture artist to work alongside another artist as a mentor for them in carrying out this piece of work.
- For successfully shortlisted artist(s), we will request an early concept design

and a fee will be provided per artist, per artwork.