

ELECTION HOARDINGS

APPLICATION FORM, APPROVED SITES
AND CONDITIONS



Election Hoarding Application Form

Your details

Name	<input type="text"/>
On behalf of	<input type="text"/>
Candidate name	<input type="text"/>
Candidate Party	<input type="text"/>
Your email to send written reply (<i>Please print</i>)	<input type="text"/>

Sites and signage

(Road reserve only)

Number of signs	<input type="text"/>	Maximum size (2.4 ² m)		
Number of signs	<input type="text"/>	Other size(s) under (2.4 ² m)		
Sites	<input type="text"/>			
Supply photo of election sign (<i>Required</i>)	<input type="checkbox"/>	Yes		
Do you have mobile advertising sign/s?	<input type="checkbox"/>	Yes	<input type="checkbox"/>	No

Person(s) responsible for sign maintenance

(Placement and removal of signs. If different from your details)

Name	<input type="text"/>		
Day number	<input type="text"/>	Mobile number	<input type="text"/>
Email	<input type="text"/>		
Name	<input type="text"/>		
Day number	<input type="text"/>	Mobile number	<input type="text"/>
Email	<input type="text"/>		

I would like to use road reserve land for hoardings and agree to comply with all of the conditions

Signed	<input type="text"/>	Date	<input type="text"/>
--------	----------------------	------	----------------------

Return via post or email: hayley.craig@huttcity.govt.nz

Conditions

The following information is designed to assist in the preparation and placement of election signs and hoardings. A list of the Conditions and Approved Sites follows:

1. Extreme care must be taken when digging holes for sign supports as underground power, telephone, water and gas services may exist at any depth below the surface.
2. Maximum size of any election hoards is set at;
 - i. 2.4 square metre in face area, with the maximum height of a free-standing sign being 3 metres. Although some sites require a maximum size of;
 - ii. 1 square metre, with the maximum height of free-standing sign being 1.8 metres.
3. Signs shall be erected no earlier than **Saturday 30 August 2025**, being 42 days prior to election day in accordance with the requirements of the local elections.
4. Signs to be removed twelve noon on **Friday 10 October 2025**.
5. All election hoardings must always be maintained in a tidy and safe state. Some smaller locations will only allow one sign per candidate.
6. Signs must be located so that they do not obstruct traffic sight lines from intersections, driveways, pedestrian and railway crossings.
7. Signs must not obstruct the clear view of any traffic signs or other hoardings/community notice boards erected in the vicinity.
8. Signs must not be erected on any lamp post or street light pole.
9. On removal of the hoardings, the ground must be restored to its former condition.

For signs on private property, owner's permission must be sought, the following provisions of the District Plan apply. Any clarifications on District Plan rules email enforcement@huttcity.govt.nz Resource Consents Division.
10. Mobile Signs / VMS (electronic) sign boards – No signs are permitted (including mobile and VMS signs) anywhere on The Esplanade, Eastern Hutt Road and Randwick Road.

All applications for approval must be accompanied by a complete application form.

Approved sites

See plans attached for exact locations allowed.

- (a) **Cambridge Terrace** - whole length of railway berms, excluding areas shown on plan no's 1 to 5 and plan 14, 14A and 14B.
- (b) **Dowse Drive** - (*Signs 1 sq metres only*) south side as shown on plan 6. **One sign per candidate.**
- (c) **Dowse Drive** - west side only not closer than 3m to the kerb edge for the first 52 metres from bus stop to (opposite 66), then not closer than 2m to the kerb edge for the remaining distance as shown on plan 7.
- (d) **Fairway Drive** - (See plan 8) south side only, starting 50 metres east of the Harcourt Werry Drive off ramp and extending 55m eastwards. **One sign per candidate. Signs must not block Hutt City Events Noticeboard.**
- (e) **George Street** - (See plan 9) east side, starting at the southern end of Delaney Park and extending 80m northwards, between the fence and the road. **One sign per candidate.**
- (f) **Harbourview Road** - (See plan 10) south side, starting 15m east from first house on left hand side going uphill from SH2 and extending 60m eastwards. **One sign per candidate.**
- (g) **High Street** (*Signs 1 sq metres only*) south side of railway berms opposite 1173 to 1187 (See plan 11) (excluding area shown on plan 11A) behind cycle path.
- (h) **Major Drive** - (See plan 12) north side as shown on plan. **One sign per candidate.**
- (i) **Normandale Road** - (*Signs 1 sq metres only*) south side as shown on plan 13. **One sign per candidate.**
- (j) **Oxford Terrace** (*Signs 1 sq metres only*) railway berms between Walters Street to 215 behind cycle path as shown on plan 14B. **One sign per candidate**
- (k) **Parkside Road** - north side, on grass berm as shown on plan 15. **One sign per candidate.**
- (l) **Pharazyn Street** - north side, as shown on plan 16. **One sign per candidate.**
- (m) **Pohutukawa Street** - whole length of railway berms, excluding areas shown on plan 1 – 4
One sign per candidate
- (n) **Stokes Valley Road** - north side, on recreation reserve land at the entrance as shown on plan 17.
One sign per candidate.
- (o) **Wainuiomata Road** - west side on grass berm as shown on Plan 18 to be visible only to north bound traffic. **One sign per candidate.**
- (p) **Waione Street, Seaview** - (*Signs 1 sq metres only (Maximum height to top of sign = 1.8m)*) - north side as shown on plan 19. **One sign per candidate.**
- (q) **Waione Street, Seaview** - Central Median as shown on Plans 20 & 21, not closer than 2m to the kerb edge.

Sites continue next page

- (r) **Wingate Crescent** - on any of the grassed island areas north and south of the Wingate Overbridge as shown on Plan 22, not closer than 5m to any kerblines.
- (s) **Wingate Roundabout-High Street to Oxford Terrace** - In grassed island as shown on Plan 23, High Street frontage on south side corner, not closer than 15 metres behind kerblines and tapering towards kerblines to 5 metres heading north.

Privacy Statement

We collect, use and disclose personal information you provided:

- for the purpose(s) specified at the point of collection
- to communicate with you for council purposes
- to tell you about products and services we believe may be of interest to you, and
- to enable us to maintain our records and carry out statutory functions.

You have the right to ask for a copy of any personal information we hold about you, and to ask for it to be corrected if you think it is wrong. If you'd like to ask for a copy of your information, or have it corrected, please contact us at contact@huttcity.govt.nz or come in and see us at 30 Laings Road, Lower Hutt 5010. For more information see our [privacy statement](#).



Sign Approval Sites	
	No
	No



RAILWAY BERMS: NOT APPROVED SITE (a)
CAMBRIDGE TERRACE AND POHUTUKAWA STREET
(Woburn Railway Station)

The council cannot guarantee the accuracy or completeness of the information and accepts no liability for any loss suffered as a result of reliance on it.

Aerial photography was flown between January and March 2021 by AAM NZ Limited for Hutt City Council and GWRC and provided under the Creative Commons Attribution 4.0 International License (CC BY 4.0).

This map is drawn on the New Zealand Transverse Mercator projection, using New Zealand Geodetic Datum 2000. Cadastral information sourced from Land Information New Zealand data.

Crown Copyright Reserved.

Scale: 1:1,500



18 July 2022

Plan 1



Sign Approval Sites

No

HUTT CITY
 TE AWA KAIRANGI

RAILWAY BERMS: NON APPROVED SITE (a)
CAMBRIDGE TERRACE AND POHUTUKAWA STREET
(Opposite Hinau Street and Guthrie Street)

The council cannot guarantee the accuracy or completeness of the information and accepts no liability for any loss suffered as a result of reliance on it.

Aerial photography was flown between January and March 2021 by AAM NZ Limited for Hutt City Council and GWRC and provided under the Creative Commons Attribution 4.0 International License (CC BY 4.0).

This map is drawn on the New Zealand Transverse Mercator projection, using New Zealand Geodetic Datum 2000. Cadastral information sourced from Land Information New Zealand data.

Crown Copyright Reserved.

Scale: 1:700

 18 July 2022

Plan 2



ELECTION HOARDING NON APPROVED SITE (a)
CAMBRIDGE TERRACE AND POHUTUKAWA STREET
(South of Waterloo Railway Station)

The council cannot guarantee the accuracy or completeness of the information and accepts no liability for any loss suffered as a result of reliance on it.

Aerial photography was flown between January and March 2021 by AAM NZ Limited for Hutt City Council and GWRC and provided under the Creative Commons Attribution 4.0 International License (CC BY 4.0).

This map is drawn on the New Zealand Transverse Mercator projection, using New Zealand Geodetic Datum 2000. Cadastral information sourced from Land Information New Zealand data.

Crown Copyright Reserved.

Scale: 1:1,000



18 July 2022

Plan 3



Sign Approval Sites

↔ No



ELECTION HOARDING NON APPROVED SITE (a)
CAMBRIDGE TERRACE AND POHUTUKAWA STREET
(Frontage of Waterloo Railway Station)

The council cannot guarantee the accuracy or completeness of the information and accepts no liability for any loss suffered as a result of reliance on it.

Aerial photography was flown between January and March 2021 by AAM NZ Limited for Hutt City Council and GWRC and provided under the Creative Commons Attribution 4.0 International License (CC BY 4.0).

This map is drawn on the New Zealand Transverse Mercator projection, using New Zealand Geodetic Datum 2000. Cadastral information sourced from Land Information New Zealand data.

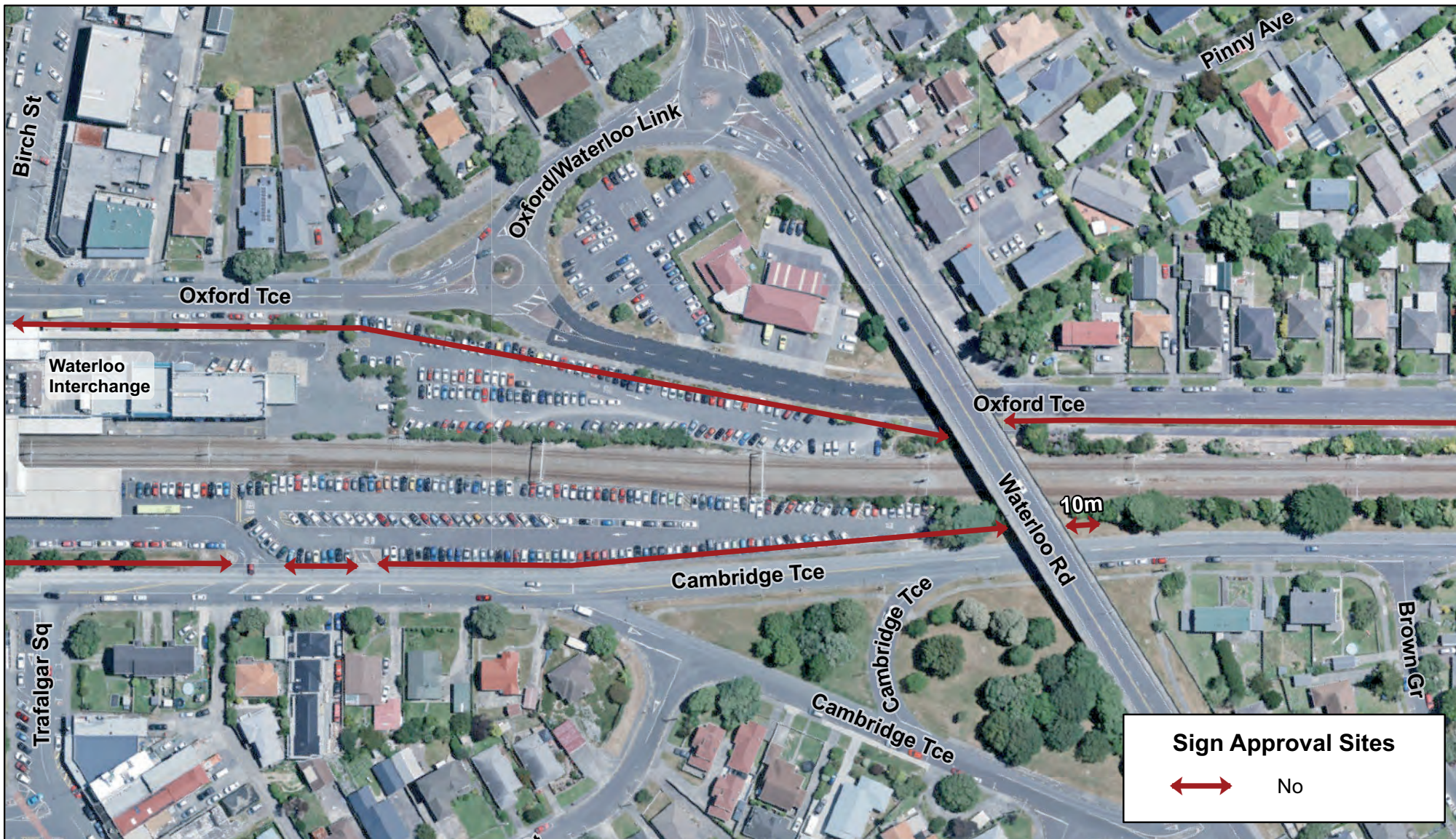
Crown Copyright Reserved.

Scale: 1:1,200



18 July 2022

Plan 4



ELECTION HOARDING NON APPROVED SITE (a)
CAMBRIDGE TERRACE AND POHUTUKAWA STREET
(North of Waterloo Railway Station)

The council cannot guarantee the accuracy or completeness of the information and accepts no liability for any loss suffered as a result of reliance on it.

Aerial photography was flown between January and March 2021 by AAM NZ Limited for Hutt City Council and GWRC and provided under the Creative Commons Attribution 4.0 International License (CC BY 4.0).

This map is drawn on the New Zealand Transverse Mercator projection, using New Zealand Geodetic Datum 2000. Cadastral information sourced from Land Information New Zealand data.

Crown Copyright Reserved.


Scale: 1:1,500



18 July 2022

Plan 5



Sign Approval Sites	
	No
	Yes



ELECTION HOARDING APPROVED SITE (b)
DOWSE DRIVE
 (South side only as shown on plan)

The council cannot guarantee the accuracy or completeness of the information and accepts no liability for any loss suffered as a result of reliance on it.

Aerial photography was flown between January and March 2021 by AAM NZ Limited for Hutt City Council and GWRC and provided under the Creative Commons Attribution 4.0 International License (CC BY 4.0).

This map is drawn on the New Zealand Transverse Mercator projection, using New Zealand Geodetic Datum 2000. Cadastral information sourced from Land Information New Zealand data.

Crown Copyright Reserved.

Scale: 1:600



18 July 2022

Plan 6



Sign Approval Sites	
	No
	Yes

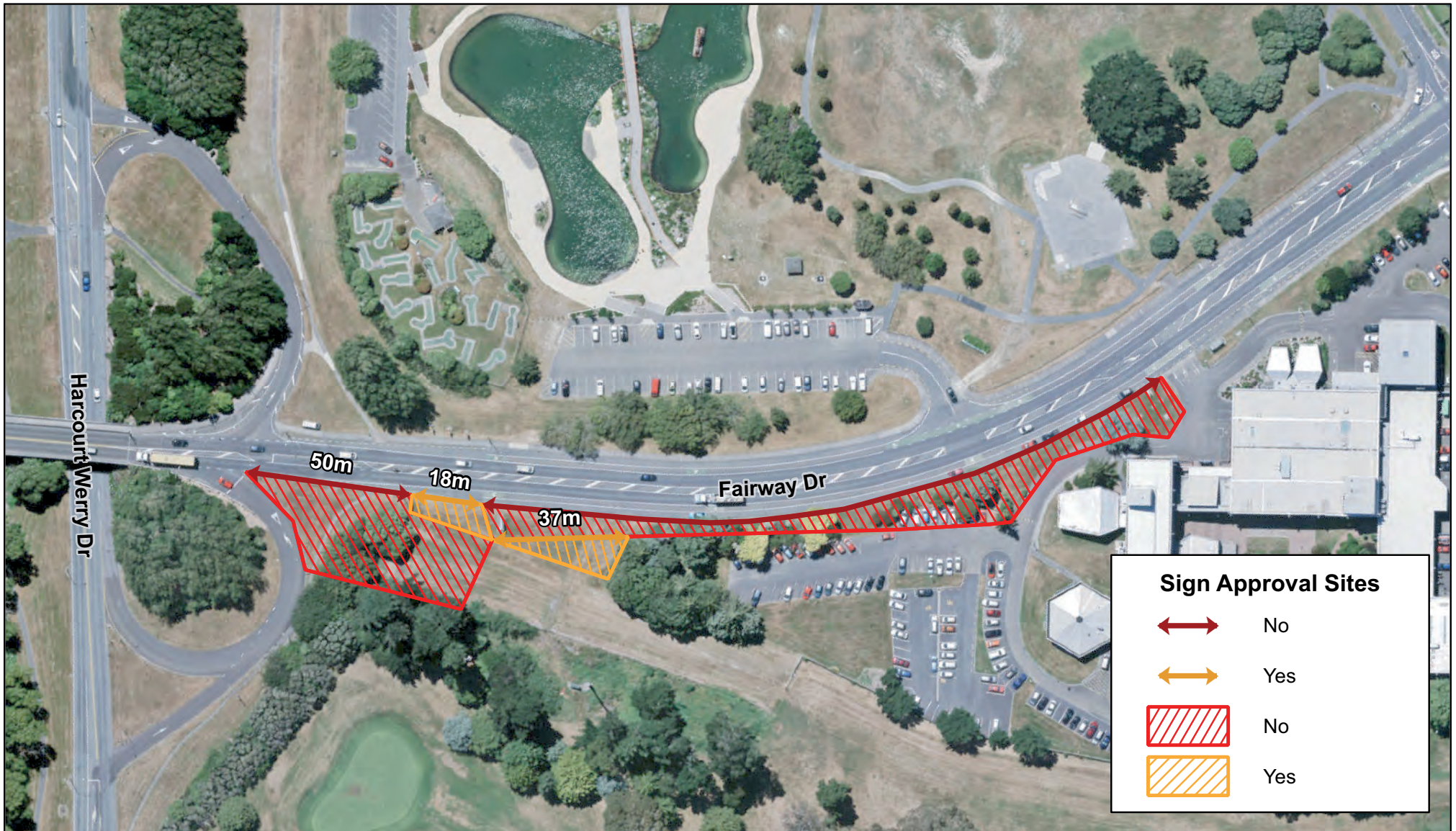


ELECTION HOARDING APPROVED SITE (c)
DOWSE DRIVE
(West side only as shown on plan)

The council cannot guarantee the accuracy or completeness of the information and accepts no liability for any loss suffered as a result of reliance on it.
Aerial photography was flown between January and March 2021 by AAM NZ Limited for Hutt City Council and GWRC and provided under the Creative Commons Attribution 4.0 International License (CC BY 4.0).
This map is drawn on the New Zealand Transverse Mercator projection, using New Zealand Geodetic Datum 2000. Cadastral information sourced from Land Information New Zealand data.
Crown Copyright Reserved.

Scale: 1:800

 18 July 2022
Plan 7



ELECTION HOARDING APPROVED SITE (d)
FAIRWAY DRIVE
(South side only)

The council cannot guarantee the accuracy or completeness of the information and accepts no liability for any loss suffered as a result of reliance on it.

Aerial photography was flown between January and March 2021 by AAM NZ Limited for Hutt City Council and GWRC and provided under the Creative Commons Attribution 4.0 International License (CC BY 4.0).

This map is drawn on the New Zealand Transverse Mercator projection, using New Zealand Geodetic Datum 2000. Cadastral information sourced from Land Information New Zealand data. Crown Copyright Reserved.

Scale: 1:1,400



18 July 2022

Plan 8





ELECTION HOARDING APPROVED SITE (f) HARBOUR VIEW ROAD

The council cannot guarantee the accuracy or completeness of the information and accepts no liability for any loss suffered as a result of reliance on it.

Aerial photography was flown between January and March 2021 by AAM NZ Limited for Hutt City Council and GWRC and provided under the Creative Commons Attribution 4.0 International License (CC BY 4.0).

This map is drawn on the New Zealand Transverse Mercator projection, using New Zealand Geodetic Datum 2000. Cadastral information sourced from Land Information New Zealand data.

Crown Copyright Reserved.

Scale: 1:900





18 July 2022

Plan 10



Sign Approval Sites

 No
 Yes



ELECTION HOARDING APPROVED SITE (g)
HIGH STREET
(Railway Berms)

The council cannot guarantee the accuracy or completeness of the information and accepts no liability for any loss suffered as a result of reliance on it.

Aerial photography was flown between January and March 2021 by AAM NZ Limited for Hutt City Council and GWRC and provided under the Creative Commons Attribution 4.0 International License (CC BY 4.0).

This map is drawn on the New Zealand Transverse Mercator projection, using New Zealand Geodetic Datum 2000. Cadastral information sourced from Land Information New Zealand data.

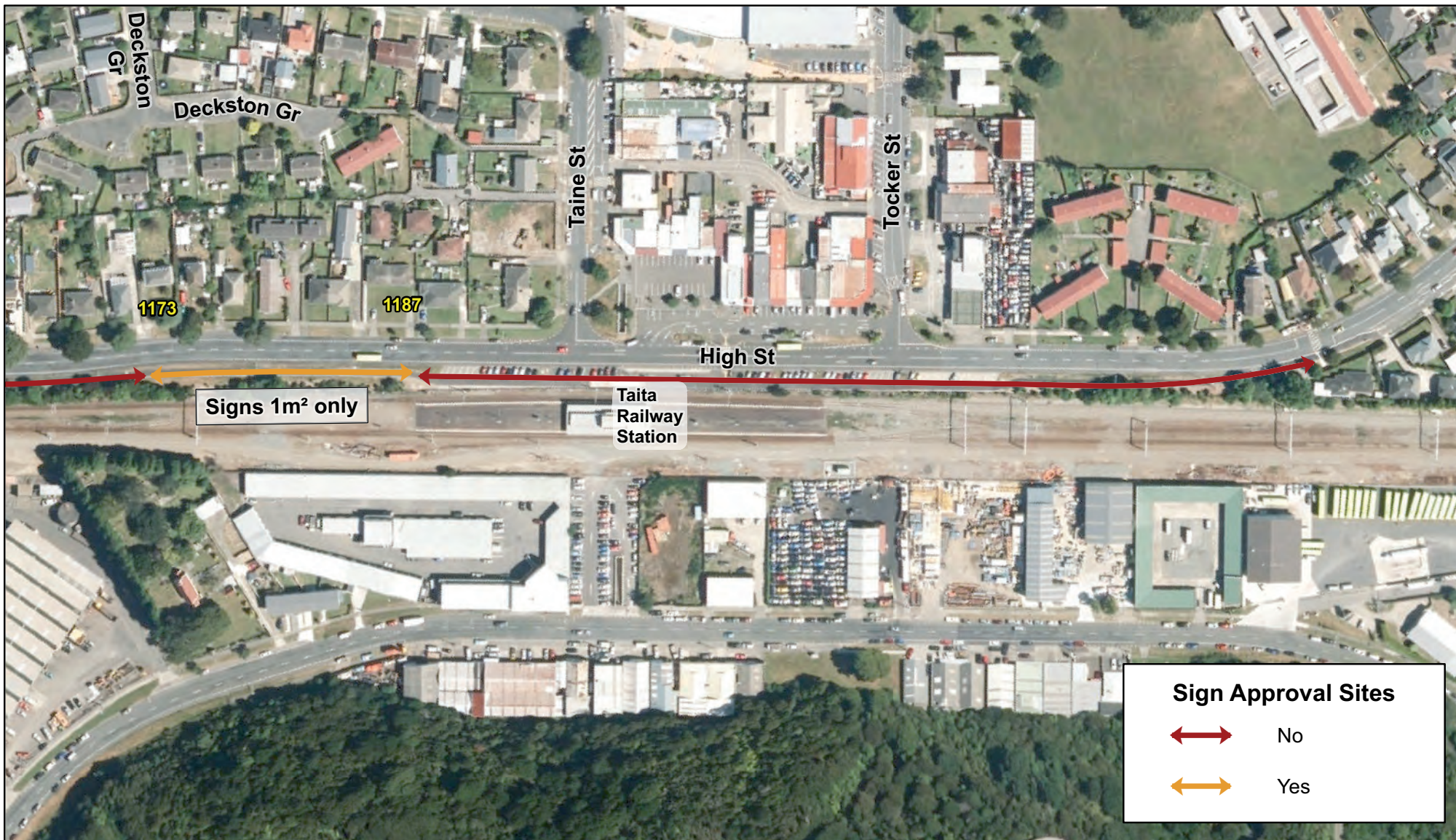
Crown Copyright Reserved.

Scale: 1:1,900



18 July 2022

Plan 11



Sign Approval Sites	
	No
	Yes



ELECTION HOARDING APPROVED SITE (g)
HIGH STREET
(Taita Railway Station)

The council cannot guarantee the accuracy or completeness of the information and accepts no liability for any loss suffered as a result of reliance on it.

Aerial photography was flown between January and March 2021 by AAM NZ Limited for Hutt City Council and GWRC and provided under the Creative Commons Attribution 4.0 International License (CC BY 4.0).

This map is drawn on the New Zealand Transverse Mercator projection, using New Zealand Geodetic Datum 2000. Cadastral information sourced from Land Information New Zealand data.

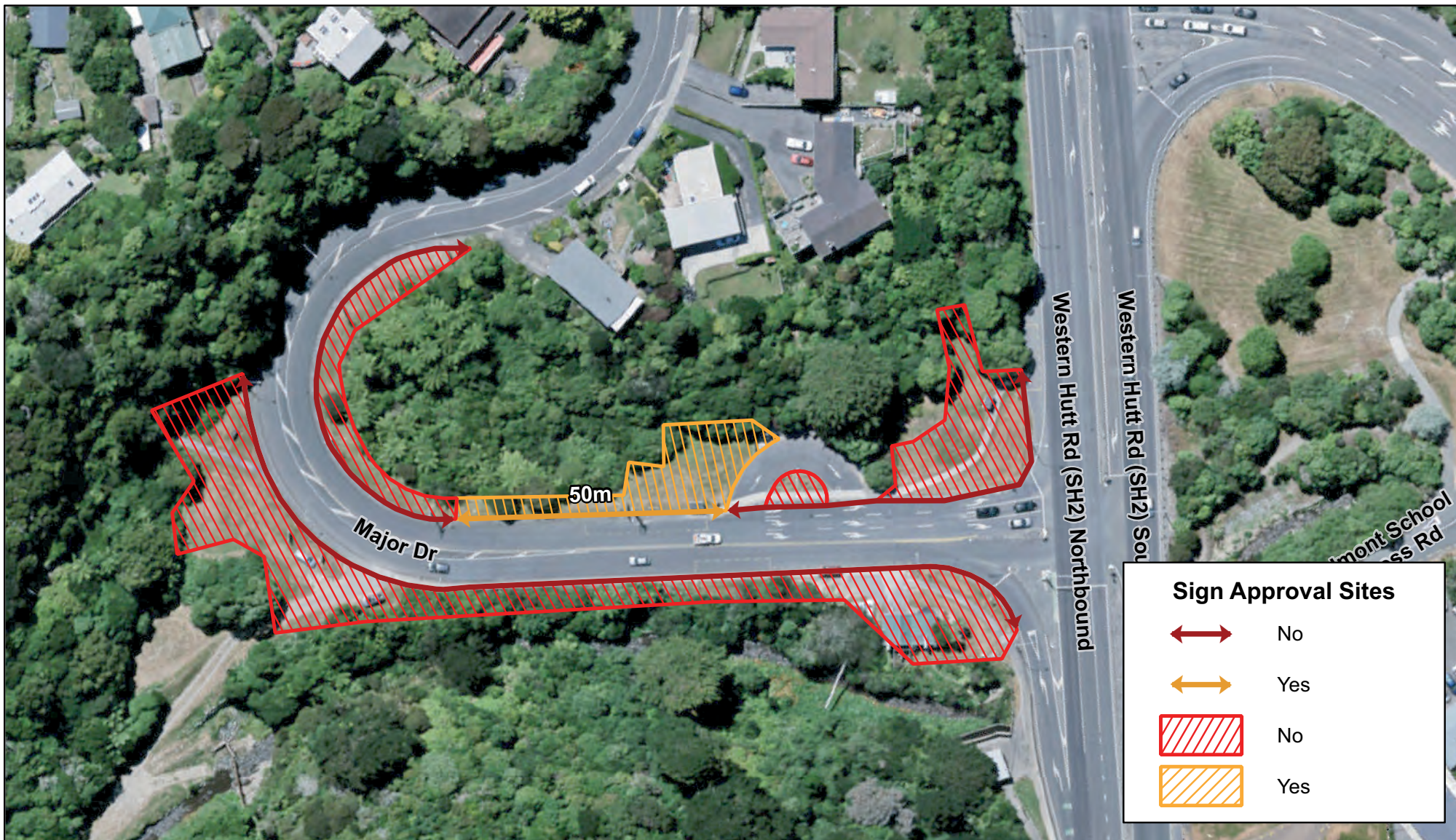
Crown Copyright Reserved.

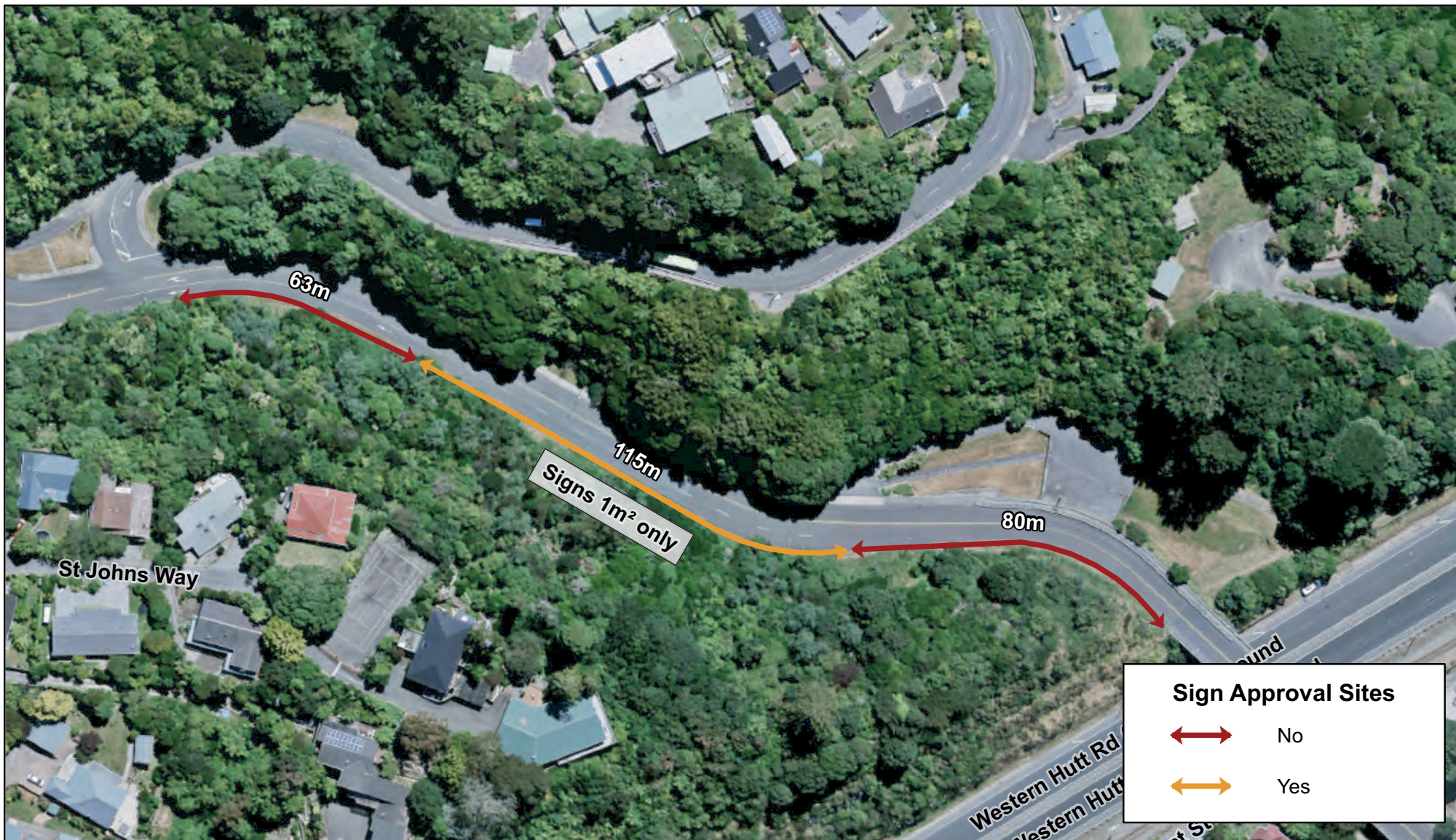
Scale: 1:2,200



18 July 2022

Plan 11A





Sign Approval Sites	
	No
	Yes



**ELECTION HOARDING APPROVED SITE (i)
NORMANDALE ROAD**

The council cannot guarantee the accuracy or completeness of the information and accepts no liability for any loss suffered as a result of reliance on it.

Aerial photography was flown between January and March 2021 by AAM NZ Limited for Hutt City Council and GWRC and provided under the Creative Commons Attribution 4.0 International License (CC BY 4.0).

This map is drawn on the New Zealand Transverse Mercator projection, using New Zealand Geodetic Datum 2000. Cadastral information sourced from Land Information New Zealand data.

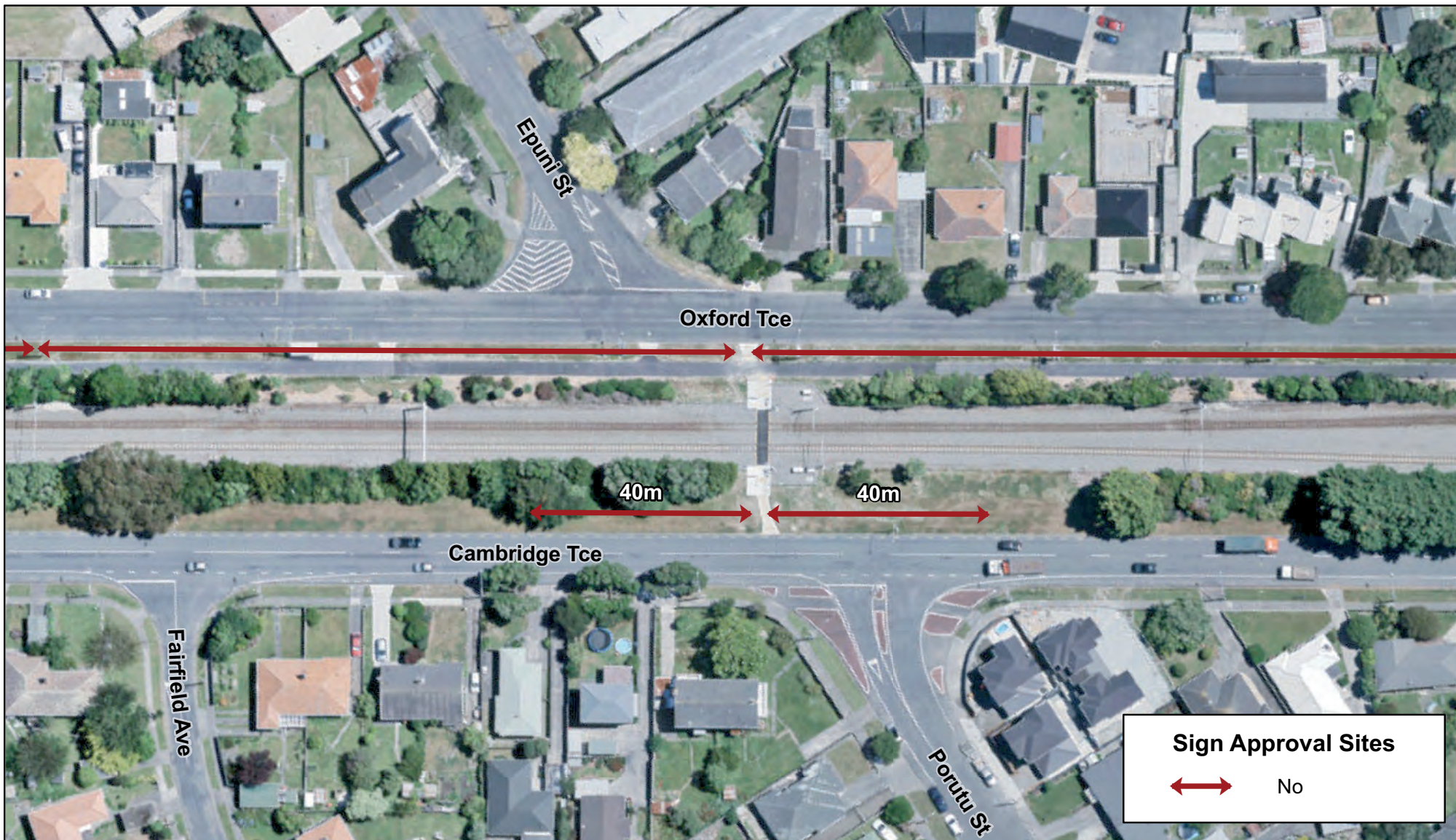
Crown Copyright Reserved.

Scale: 1:1,200



18 July 2022

Plan 13



RAILWAY BERMS: NON APPROVED SITE (j)
CAMBRIDGE TERRACE AND OXFORD TERRACE
(Opposite Porutu Street and Epuni Street)

The council cannot guarantee the accuracy or completeness of the information and accepts no liability for any loss suffered as a result of reliance on it.

Aerial photography was flown between January and March 2021 by AAM NZ Limited for Hutt City Council and GWRC and provided under the Creative Commons Attribution 4.0 International License (CC BY 4.0).

This map is drawn on the New Zealand Transverse Mercator projection, using New Zealand Geodetic Datum 2000. Cadastral information sourced from Land Information New Zealand data.

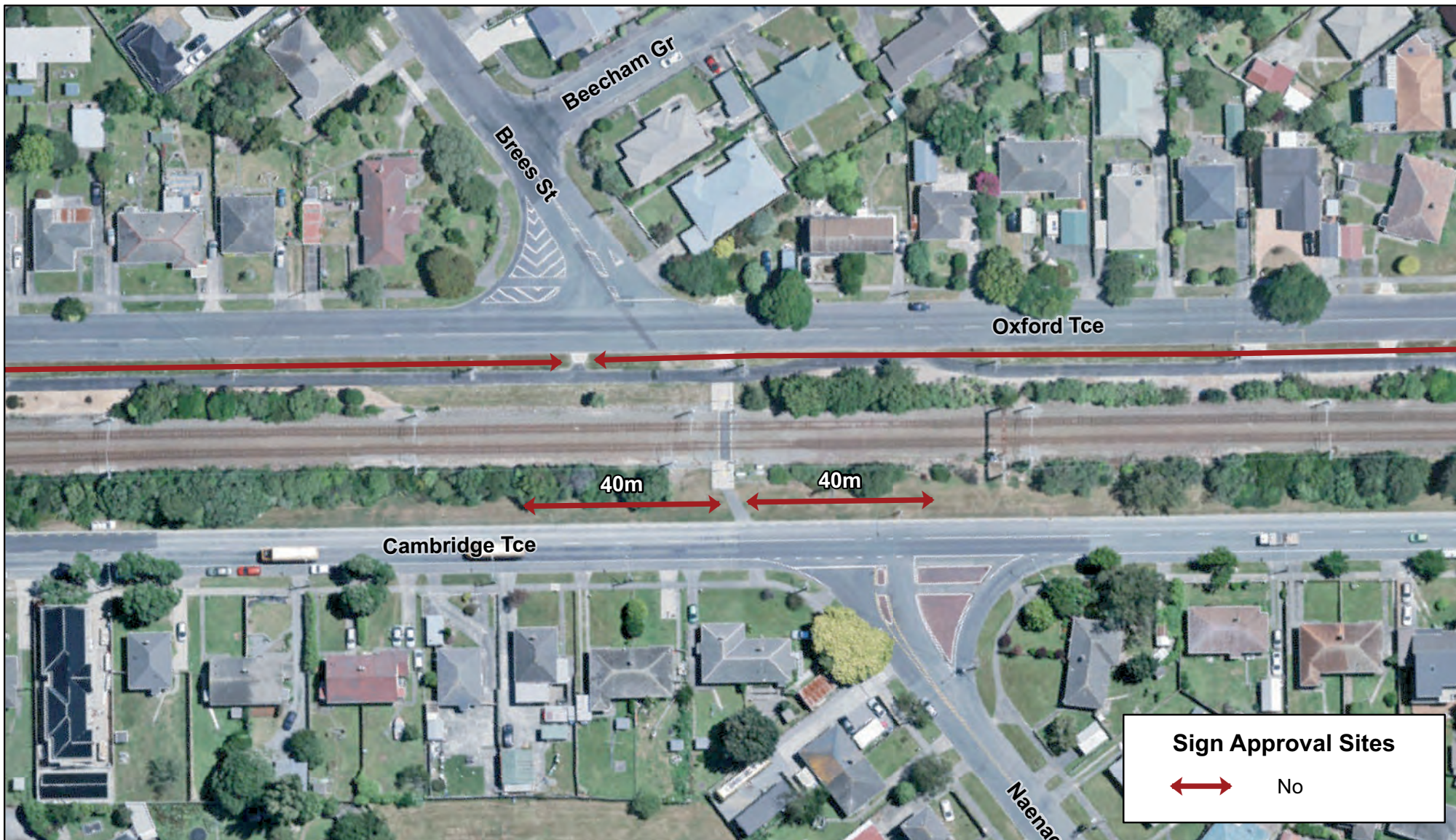
Crown Copyright Reserved.

Scale: 1:900



18 July 2022

Plan 14



RAILWAY BERMS: NON APPROVED SITE (j)
CAMBRIDGE TERRACE AND OXFORD TERRACE
(Opposite Brees Street and Naenae Road)

The council cannot guarantee the accuracy or completeness of the information and accepts no liability for any loss suffered as a result of reliance on it.

Aerial photography was flown between January and March 2021 by AAM NZ Limited for Hutt City Council and GWRC and provided under the Creative Commons Attribution 4.0 International License (CC BY 4.0).

This map is drawn on the New Zealand Transverse Mercator projection, using New Zealand Geodetic Datum 2000. Cadastral information sourced from Land Information New Zealand data.

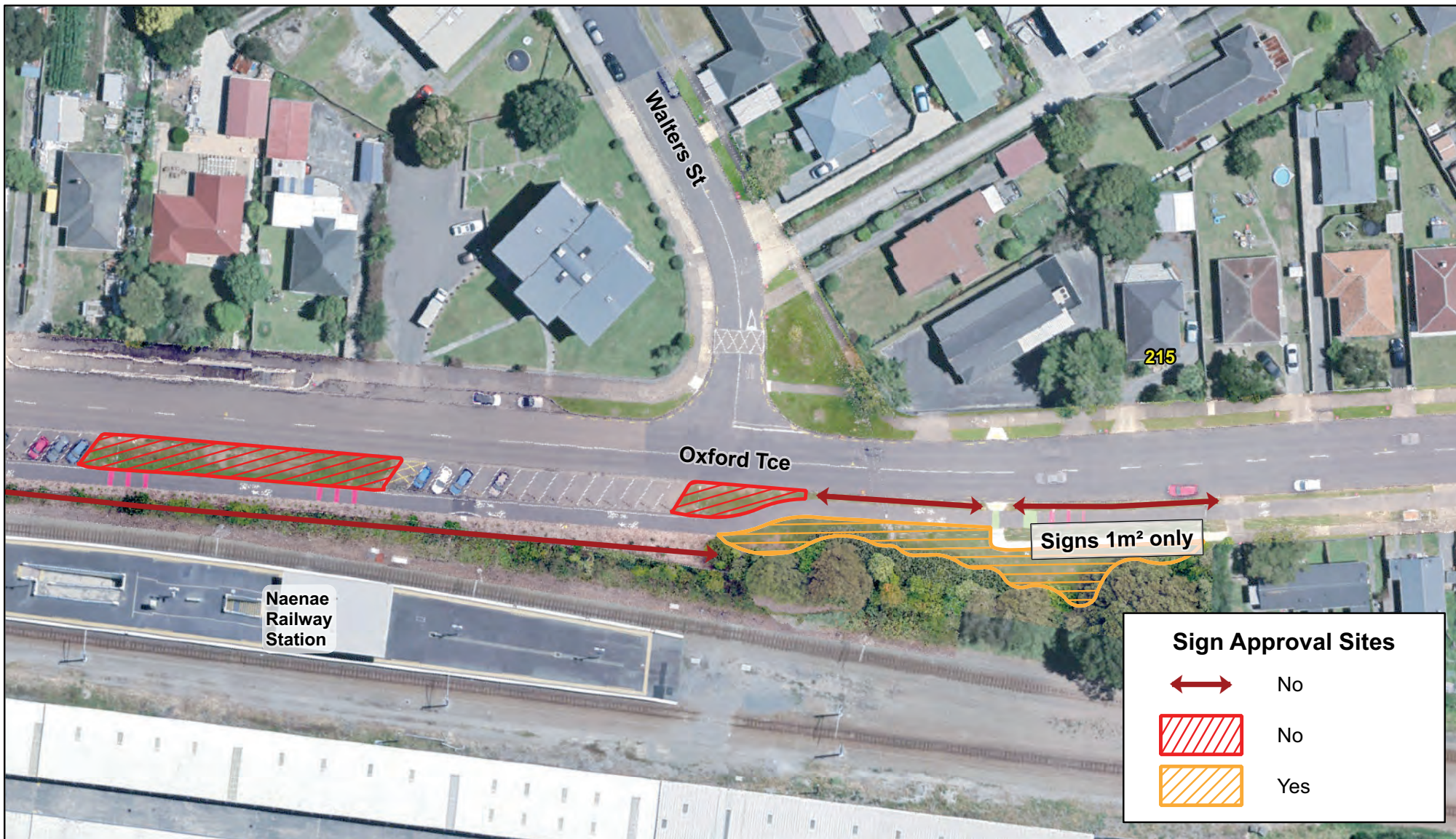
Crown Copyright Reserved.

Scale: 1:1,000



18 July 2022

Plan 14A



Sign Approval Sites

	No
	No
	Yes



RAILWAY BERMS: NON APPROVED SITE (j)
OXFORD TERRACE
(Opposite Walter Street to 215 Oxford Terrace)

The council cannot guarantee the accuracy or completeness of the information and accepts no liability for any loss suffered as a result of reliance on it.

Aerial photography was flown between January and March 2021 by AAM NZ Limited for Hutt City Council and GWRC and provided under the Creative Commons Attribution 4.0 International License (CC BY 4.0).

This map is drawn on the New Zealand Transverse Mercator projection, using New Zealand Geodetic Datum 2000. Cadastral information sourced from Land Information New Zealand data.

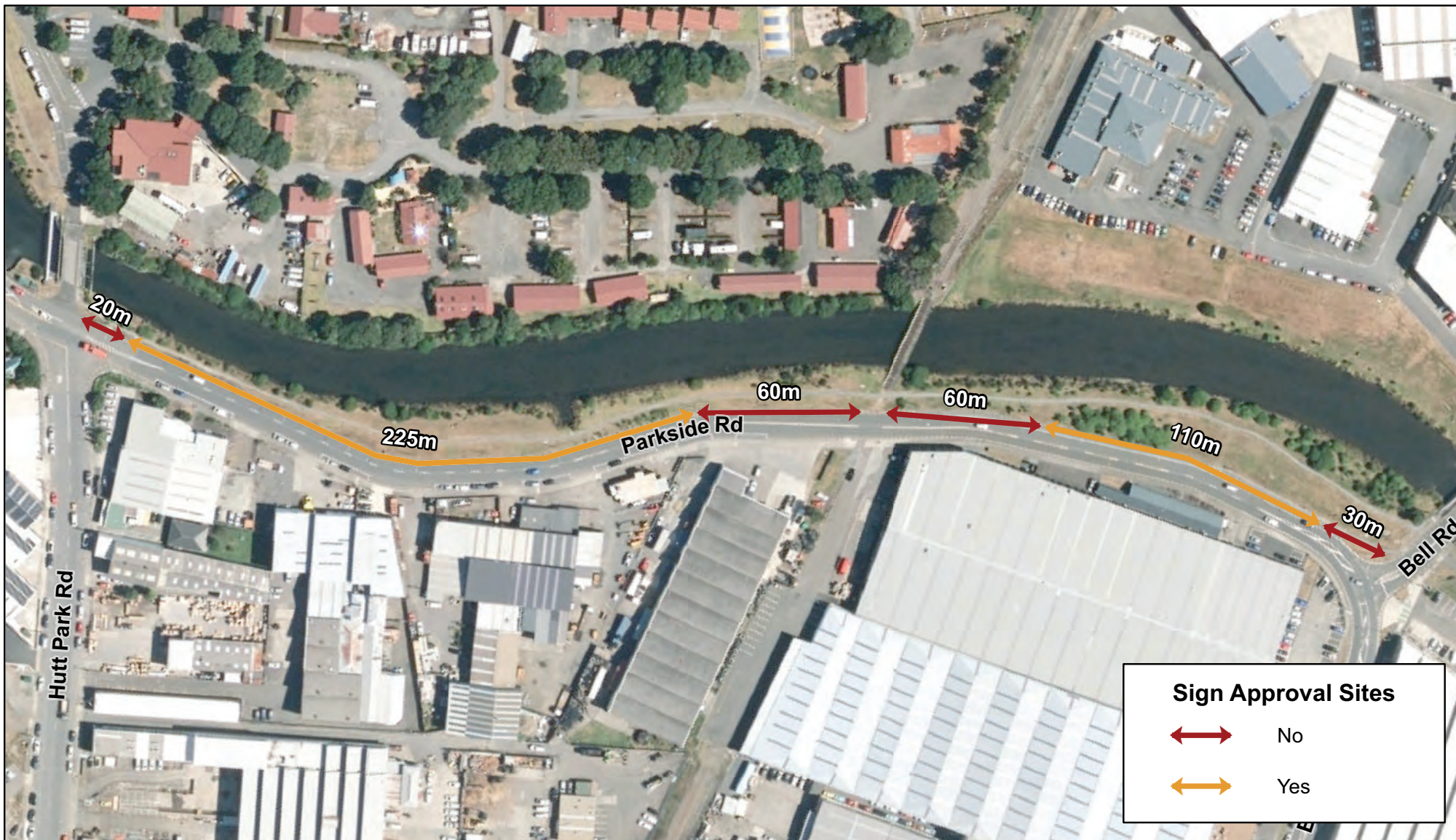
Crown Copyright Reserved.

Scale: 1:800



18 July 2022

Plan 14B



ELECTION HOARDING APPROVED SITE (k) **PARKSIDE ROAD**

The council cannot guarantee the accuracy or completeness of the information and accepts no liability for any loss suffered as a result of reliance on it.

Aerial photography was flown between January and March 2021 by AAM NZ Limited for Hutt City Council and GWRC and provided under the Creative Commons Attribution 4.0 International License (CC BY 4.0).

This map is drawn on the New Zealand Transverse Mercator projection, using New Zealand Geodetic Datum 2000. Cadastral information sourced from Land Information New Zealand data.

Crown Copyright Reserved.

Scale: 1:1,900



18 July 2022

Plan 15



ELECTION HOARDING APPROVED SITE (I) PHARAZYN STREET

The council cannot guarantee the accuracy or completeness of the information and accepts no liability for any loss suffered as a result of reliance on it.

Aerial photography was flown between January and March 2021 by AAM NZ Limited for Hutt City Council and GWRC and provided under the Creative Commons Attribution 4.0 International License (CC BY 4.0).

This map is drawn on the New Zealand Transverse Mercator projection, using New Zealand Geodetic Datum 2000. Cadastral information sourced from Land Information New Zealand data.

Crown Copyright Reserved.

Scale: 1:1,700




18 July 2022

Plan 16



Sign Approval Sites


Yes



ELECTION HOARDING APPROVED SITE (n)
STOKES VALLEY ROAD

The council cannot guarantee the accuracy or completeness of the information and accepts no liability for any loss suffered as a result of reliance on it.

Aerial photography was flown between January and March 2021 by AAM NZ Limited for Hutt City Council and GWRC and provided under the Creative Commons Attribution 4.0 International License (CC BY 4.0).

This map is drawn on the New Zealand Transverse Mercator projection, using New Zealand Geodetic Datum 2000. Cadastral information sourced from Land Information New Zealand data.

Crown Copyright Reserved.

Scale: 1:700



18 July 2022

Plan 17





Sign Approval Sites	
	No
	Yes
	Yes



ELECTION HOARDING APPROVED SITE (p) WAIONE STREET, SEAVIEW

The council cannot guarantee the accuracy or completeness of the information and accepts no liability for any loss suffered as a result of reliance on it.

Aerial photography was flown between January and March 2021 by AAM NZ Limited for Hutt City Council and GWRC and provided under the Creative Commons Attribution 4.0 International License (CC BY 4.0).

This map is drawn on the New Zealand Transverse Mercator projection, using New Zealand Geodetic Datum 2000. Cadastral information sourced from Land Information New Zealand data.

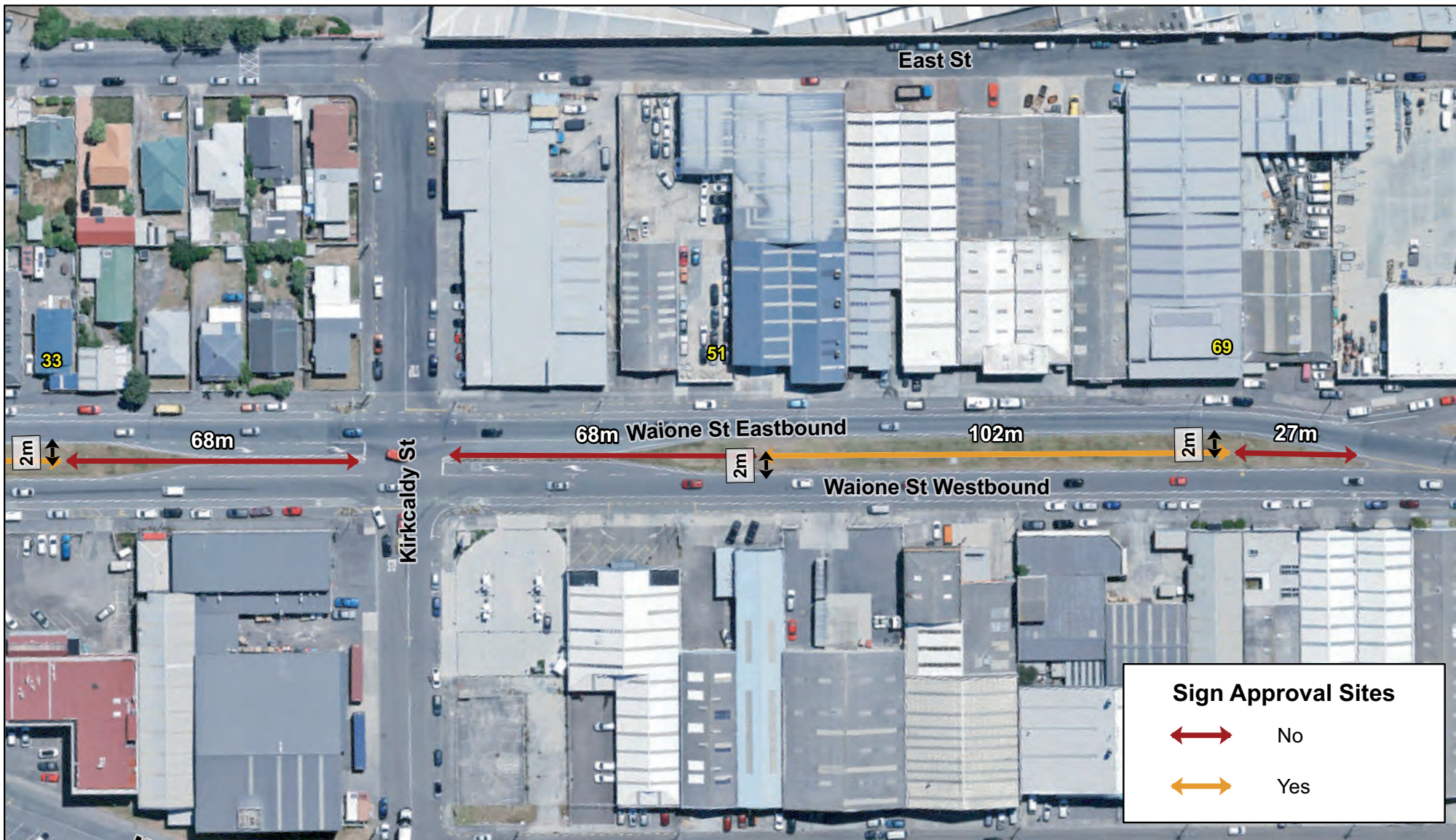
Crown Copyright Reserved.

Scale: 1:1,000



18 July 2022

Plan 19





ELECTION HOARDING APPROVED SITE (q) WAIONE STREET (Plan 2 of 2)

The council cannot guarantee the accuracy or completeness of the information and accepts no liability for any loss suffered as a result of reliance on it.

Aerial photography was flown between January and March 2021 by AAM NZ Limited for Hutt City Council and GWRC and provided under the Creative Commons Attribution 4.0 International License (CC BY 4.0).

This map is drawn on the New Zealand Transverse Mercator projection, using New Zealand Geodetic Datum 2000. Cadastral information sourced from Land Information New Zealand data.

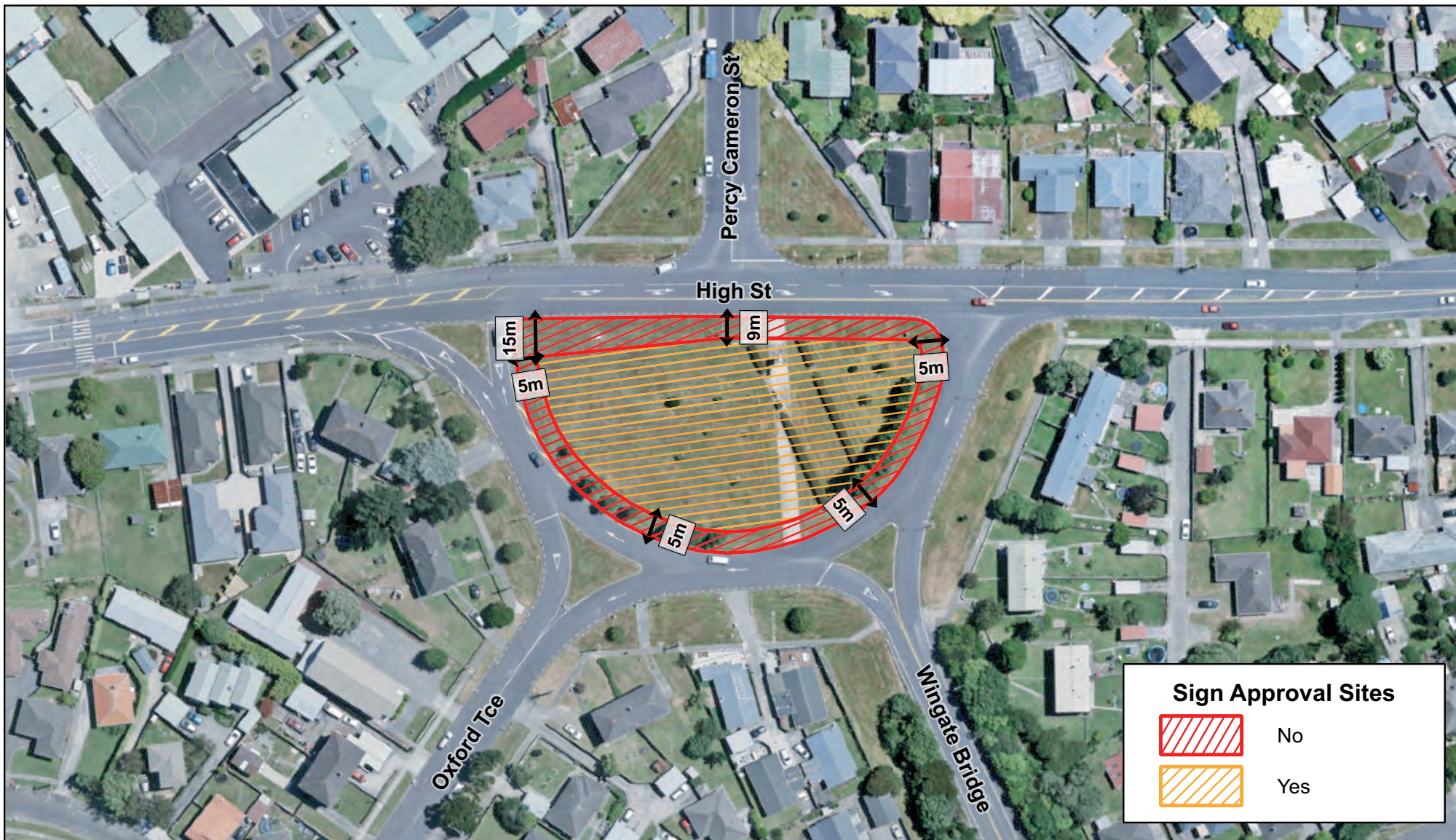
Crown Copyright Reserved.

Scale: 1:1,000



18 July 2022

Plan 21



Sign Approval Sites

	No
	Yes



**ELECTION HOARDING APPROVED SITE (s)
HIGH STREET TO OXFORD TERRACE**

The council cannot guarantee the accuracy or completeness of the information and accepts no liability for any loss suffered as a result of reliance on it.

Aerial photography was flown between January and March 2021 by AAM NZ Limited for Hutt City Council and GWRC and provided under the Creative Commons Attribution 4.0 International License (CC BY 4.0).

This map is drawn on the New Zealand Transverse Mercator projection, using New Zealand Geodetic Datum 2000. Cadastral information sourced from Land Information New Zealand data.

Crown Copyright Reserved.

Scale: 1:1,200



18 July 2022

Plan 23