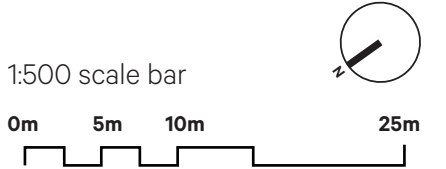


Mā-Koromiko General Arrangement Plan - North.



Legend.	
	Bus stop
	Parking
	Location of Mini steps
	Location of Standard steps
Seawalls & Path	
	Single curved seawall with bench
	Double curved seawall with bench
	Double curved seawall with Balustrade
	Triple curved seawall with Balustrade
	Shared Path
	Concrete Shared path pavement
	Fall from height barriers
Ecology and Landscape	
	Fish passage- Stream outlet
	Ecological Tiles indicative location
	Known Penguin nesting areas
	Trees retained
	Enhanced planting at headlands
Tides	
	Mean High Water Springs (MHWS)
	High Tide
	Mid Tide
	Low Tide

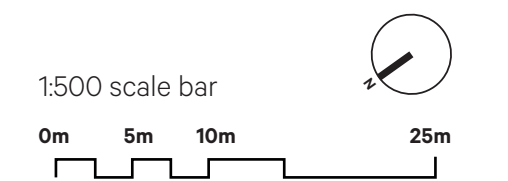
Wall Type Sections.	
	Single curved seawall with bench
	Double curved seawall
	Double curved seawall with Balustrade
	Triple curved seawall with Balustrade



Oruamotoro (Days Bay)
 *This was a Ngati Ira fortified village however the name can also apply to the bay. Said to have been built by Te Hiha. Possible urupa/burial ground *

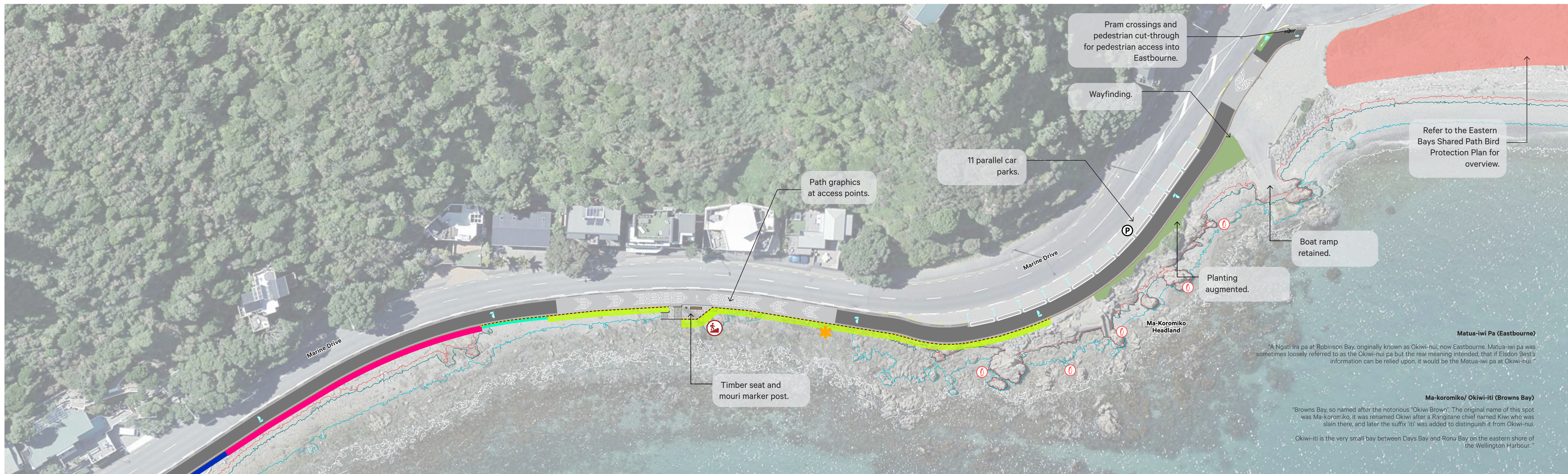
Ma-koromiko/ Okiwi-iti (Browns Bay)
 Browns Bay, so named after the notorious "Okiwi Brown". The original name of this spot was Ma-koromiko, it was renamed Okiwi after a Rangitane chief named Kiwi who was slain there, and later the suffix 'iti' was added to distinguish it from Okiwi-nui. Okiwi-iti is the very small bay between Days Bay and Rona Bay on the eastern shore of the Wellington Harbour.

Mā-Koromiko General Arrangement Plan - South.



Legend.	
	Bus stop
	Parking
	Location of Mini steps
	Location of Standard steps
Seawalls & Path	
	Single curved seawall with bench
	Double curved seawall with bench
	Double curved seawall with Balustrade
	Triple curved seawall with Balustrade
	Shared Path
	Concrete Shared path pavement
	Fall from height barriers
Ecology and Landscape	
	Fish passage- Stream outlet
	Ecological Tiles indicative location
	Known Penguin nesting areas
	Trees retained
	Enhanced planting at headlands
Tides	
	Mean High Water Springs (MHWS)
	High Tide
	Mid Tide
	Low Tide

Wall Type Sections.	
	Single curved seawall with bench
	Double curved seawall
	Double curved seawall with Balustrade
	Triple curved seawall with Balustrade



Matua-iwi Pa (Eastbourne)
 *A Ngāti Ira pa at Robinson Bay, originally known as Okiwi-nui, now Eastbourne. Matua-iwi pa was sometimes loosely referred to as the Okiwi-nui pa but the real meaning intended, that if Elsdon Best's information can be relied upon, it would be the Matua-iwi pa at Okiwi-nui.

Ma-koromiko/ Okiwi-itī (Browns Bay)
 *Browns Bay, so named after the notorious "Okiwi Brown". The original name of this spot was Ma-koromiko, it was renamed Okiwi after a Rangitane chief named Kiwi who was slain there, and later the suffix 'itī' was added to distinguish it from Okiwi-nui.
 Okiwi-itī is the very small bay between Days Bay and Rona Bay on the eastern shore of the Wellington Harbour.