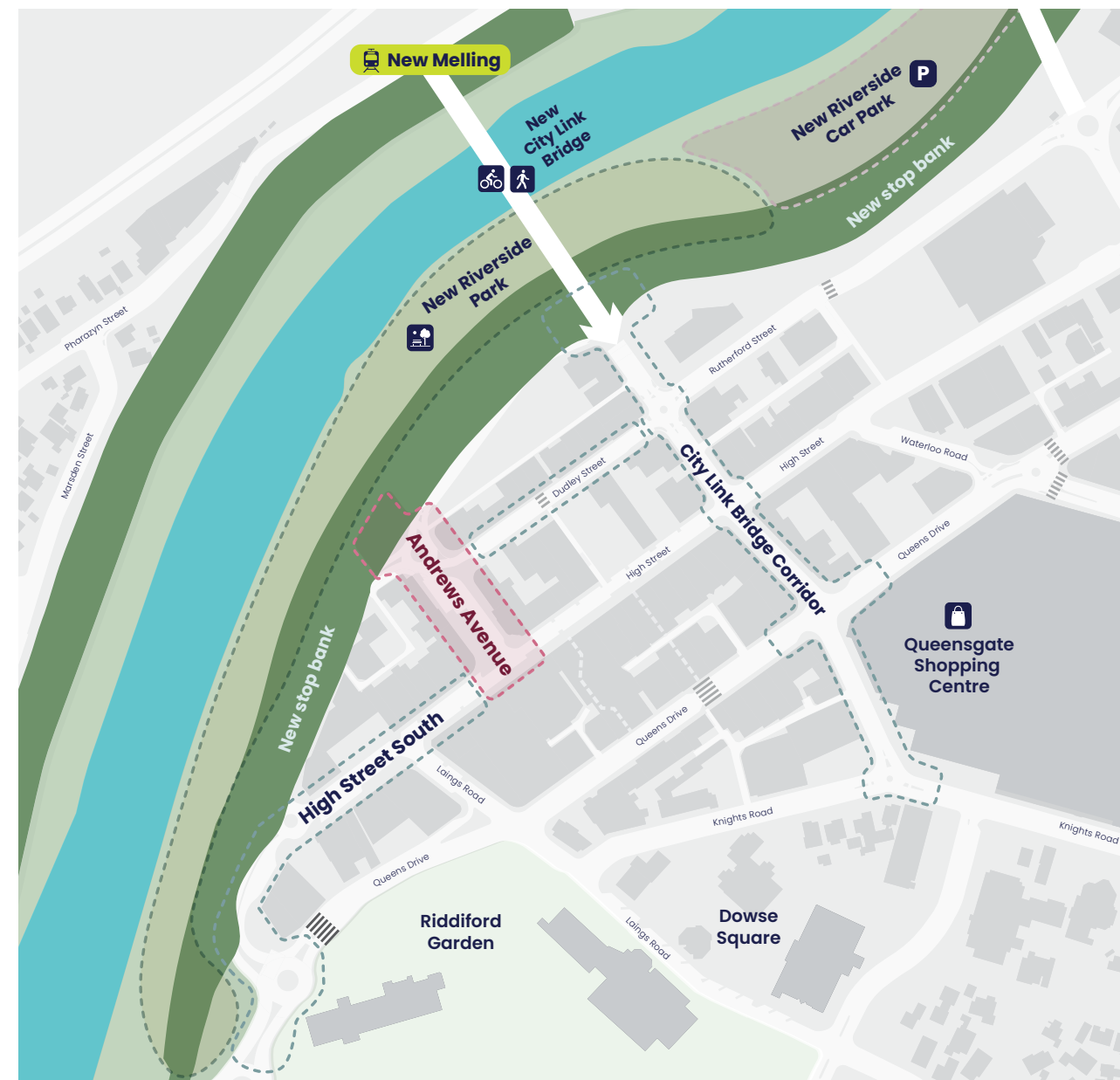


Andrews Avenue



We are upgrading this area because:

The removal of Daly Street and the Andrews Avenue roundabout to upgrade the stop bank means the street has to be redesigned.

Our communities want to see Andrews Avenue become a safer, accessible place for events, lunch or play.

What we've heard about this street:

- The area feels tired and underutilised.
- The layout does not cater for events - raised grass areas are difficult to use.
- Crossings are missing or do not meet accessibility needs - e.g. steep kerb cuts and inaccessible push buttons.
- No accessible walking route to the riverside.

Somewhere
to play at
Andrews Ave

What do
you think?

Join the kōrero, have
your say by **8 May 2026**:

hutt.city/streetscapes



Andrews Avenue - current state

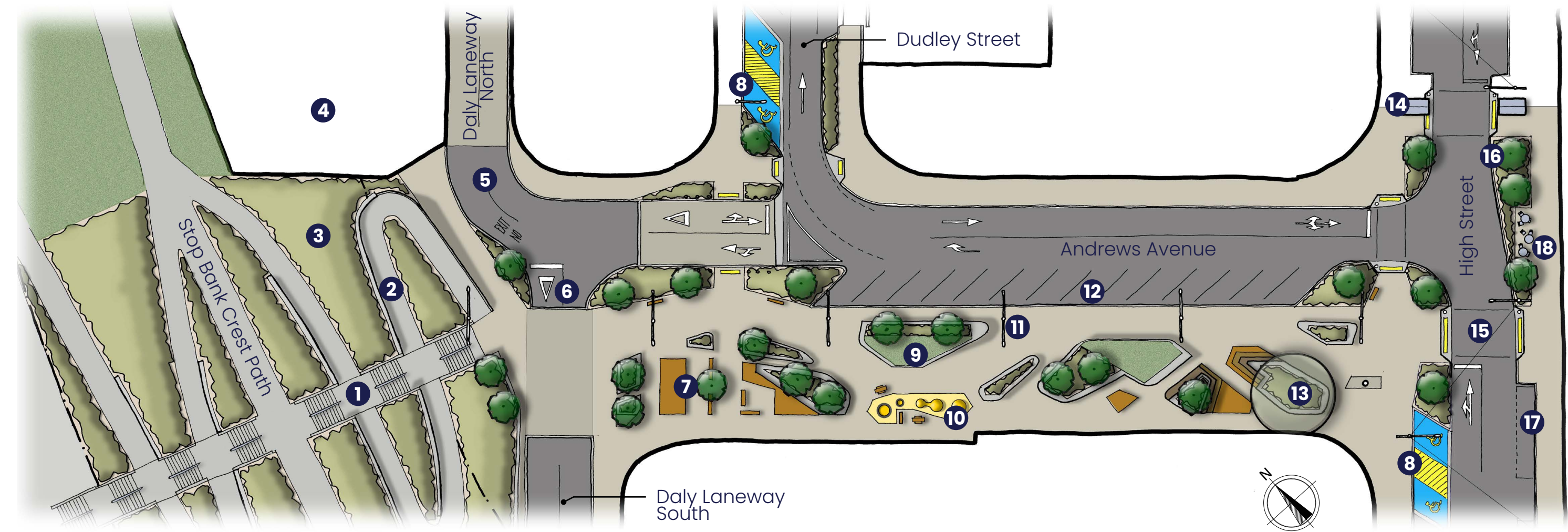


Andrews Avenue

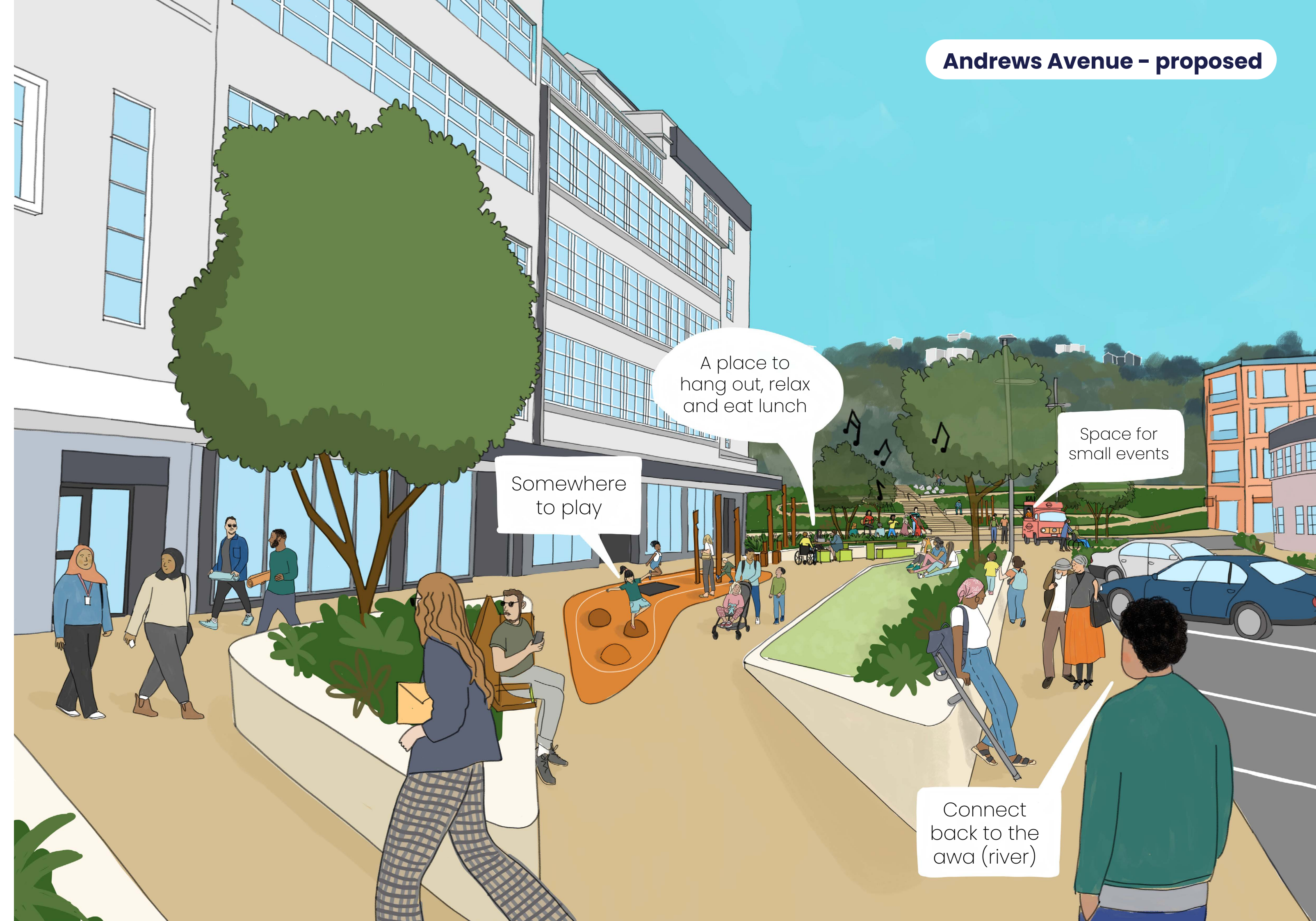


What are we proposing?

- 1 Stair access to Riverside Park
- 2 Accessible ramps - 1:20 gradient both sides of stop bank, with rest landings and seating along route
- 3 Low planting
- 4 Indicative future development site
- 5 Existing Daly Laneway North, widened for vehicle and emergency service access
- 6 Proposed realignment of Daly Laneway South
- 7 Small stage area with power for events, opportunities for food trucks with informal seating
- 8 Accessible parking with level access to footpath and 3m wide central aisle
- 9 Sloping Lawns for play and relaxation
- 10 Play features with seating, picnic tables and drinking fountain
- 11 Lighting poles to match Margaret and High Streets
- 12 Angled parking spaces
- 13 Existing mature tree retained within new raised planter and seating
- 14 Existing pedestrian crossing shelters
- 15 Improved crossing at High Street
- 16 New trees
- 17 P10 accessible drop off and loading zone
- 18 Space for outdoor cafe seating, existing and proposed



Andrews Avenue - proposed



A place to hang out, relax and eat lunch

Somewhere to play

Space for small events

Connect back to the awa (river)

Dudley Street

We are upgrading this area because:

To make the street network work seamlessly and to mitigate the loss of parking, we are also proposing low-cost changes to Dudley St.

What are we proposing?

- 1 Dudley Street direction reversed to run south to north
- 2 Accessible parking with level access to footpath and 3m wide central aisle
- 3 Planting beds
- 4 Parking increased along west side of street by changing from parallel to angled bays
- 5 Eastern side parking and property access to remain
- 6 Pedestrian crossing at end of laneway is rebuilt to improve accessibility
- 7 Property access crossover as existing
- 8 Perpendicular parking bays
- 9 New exit onto Margaret and Rutherford Street with safer signalised intersection, in alignment with Rutherford Street

