

# Riverside Park

## Recreational reserve and car park



### We are upgrading this area because:

Upcoming flood protection earthworks are going to change the river's edge through the city centre. Once earthworks are complete, we will need to introduce planting and amenities for the riverbank. While there are some engineering limits on the structures we build, we can provide a much more inviting riverside space that is accessible, joyful and useful for our community.

### What we've heard so far:

- Spaces to relax, play and connect with your whole whānau
- A river's edge that's easy to reach from the city and is accessible for everyone.
- Wide paths provide safe, connected routes for walking and cycling
- Open lawn spaces
- Areas to walk, run, stretch and exercise
- Multi-generational areas where families can spend time together and play
- Places for large groups to eat together
- Edible plants for kai (food) and Rongoā Māori (medicinal plants)
- Space for events and outdoor festivals
- Spaces for Rangatahi, including skateable features, a full sized basketball court, swings and places to hang out

Somewhere we can make memories

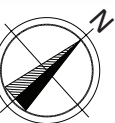
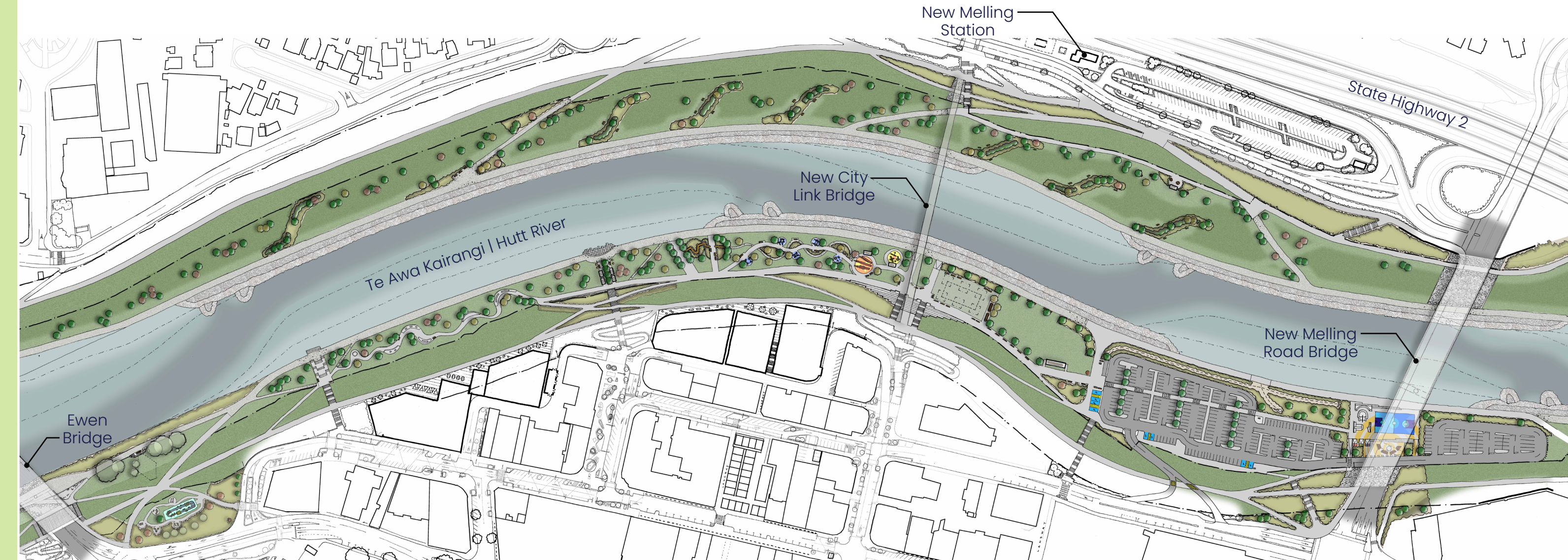


What do you think?

Join the kōrero, have your say by **8 May 2026**:

[hutt.city/streetscapes](http://hutt.city/streetscapes)

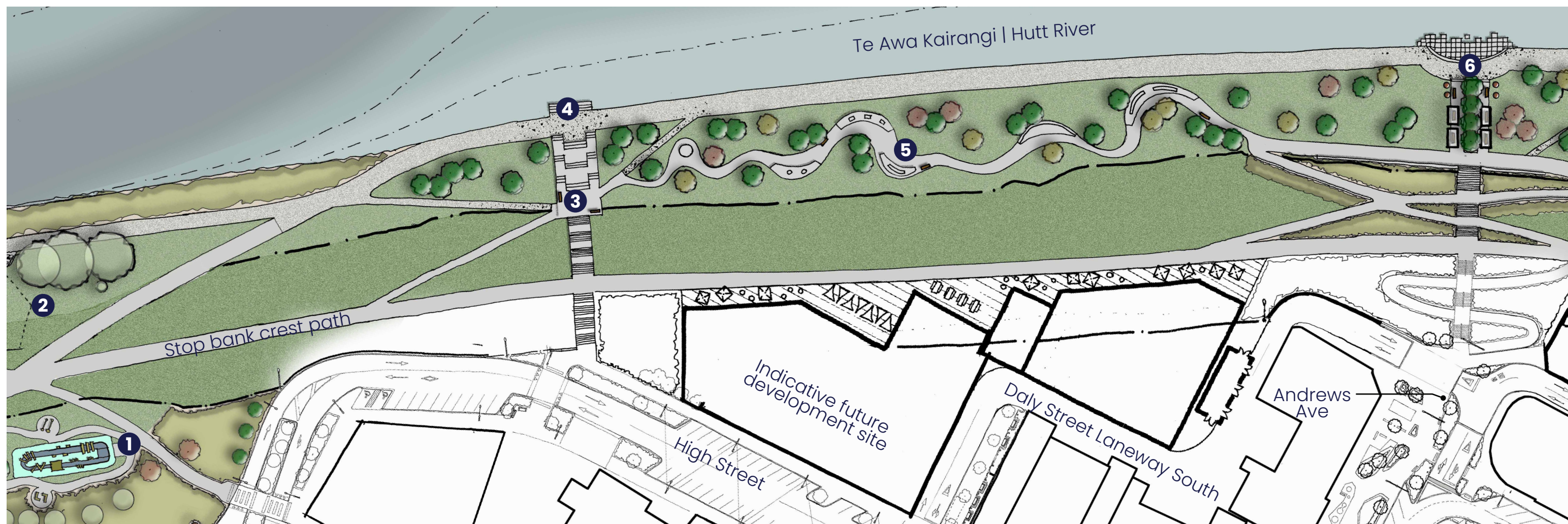
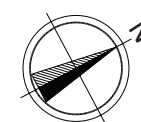
# Riverside Park - overview



# Ūranga and river access

## What are we proposing?

- 1 Outdoor exercise stations and obstacle course
- 2 Removal of existing concrete terracing
- 3 Stair access from High Street to Riverside Park
- 4 Stepped access to river
- 5 Meandering path for walking and features for cycles, scooters or skateboards to enjoy
- 6 Ūranga and river access with seating, art and 'outdoor classroom'



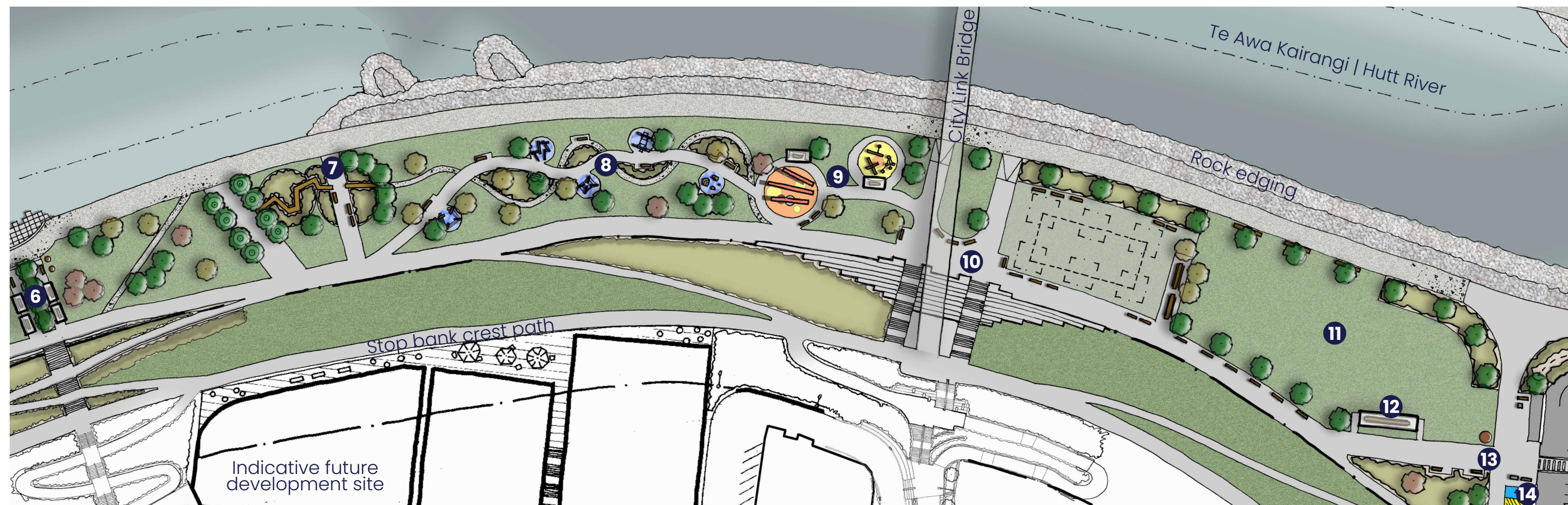
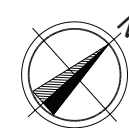
## Ūranga and river access - proposed sketch



## Nature Play area and event space

### What are we proposing?

- 6 Ūranga and river access with seating, art and 'outdoor classroom'
- 7 Māra Ako (Learning Garden) – a boardwalk of taonga plants, with educational signs explaining their traditional uses
- 8 Nature play area with planting and seating
- 9 Climbing structures for all age groups with shelters
- 10 Multi-functional area under City Link Bridge with terraced seating. Space for food trucks and events
- 11 Informal lawn for kickabout and picnics
- 12 Large dining tables and shelters
- 13 Main entrance to Riverside Park from car park
- 14 Accessible parking and drop-off zone with level access to footpath



## Nature Play area – proposed sketch

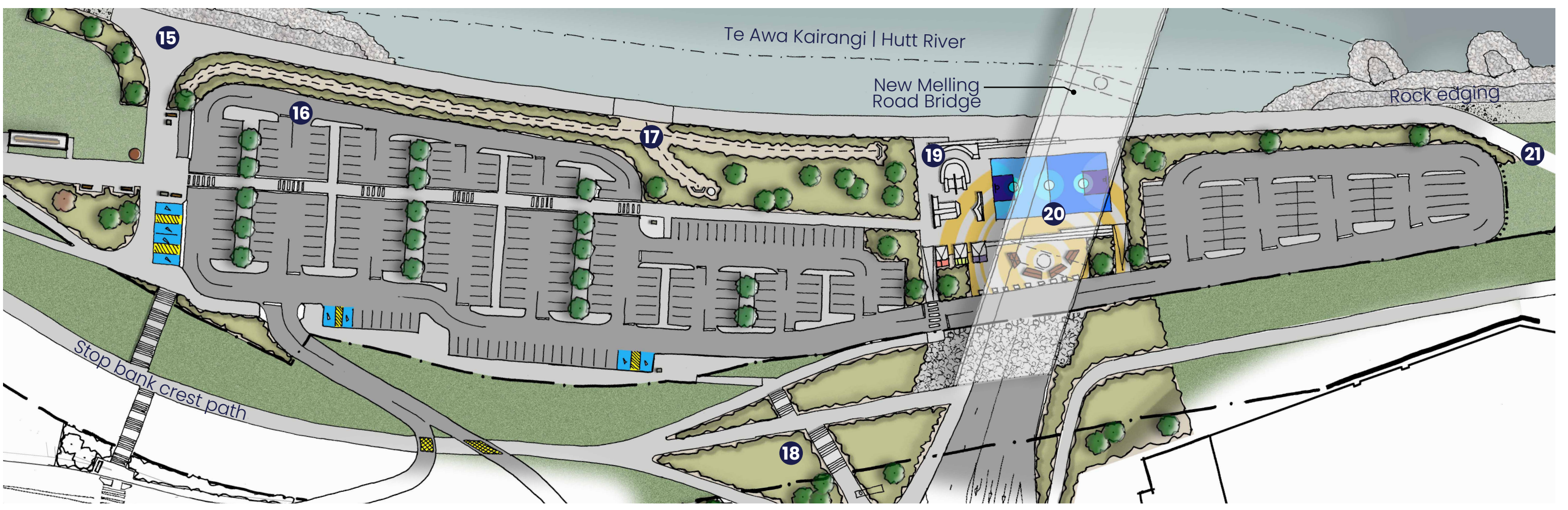


# Hang-out area and car park



## What are we proposing?

- 15 Shared track (pedestrians and people on wheels)
- 16 New car park with raised pathways for easy and safe pedestrian movement
- 17 Drainage swales collect rainwater before discharge to Te Awa Kairangi | Hutt River
- 18 Stair and ramp access to new road bridge and Queens Drive
- 19 Skateable features
- 20 Full sized basketball court and hang-out area under bridge
- 21 Paved section of riverside path links to paths upstream



## Western edge

### What are we proposing?

- 22 Seating areas with views across the river
- 23 Native planting bands with seating on western side of the river
- 24 'Low-Mow' meadows on western side of the river
- 25 Picnic tables and shelter on the western side of the river

