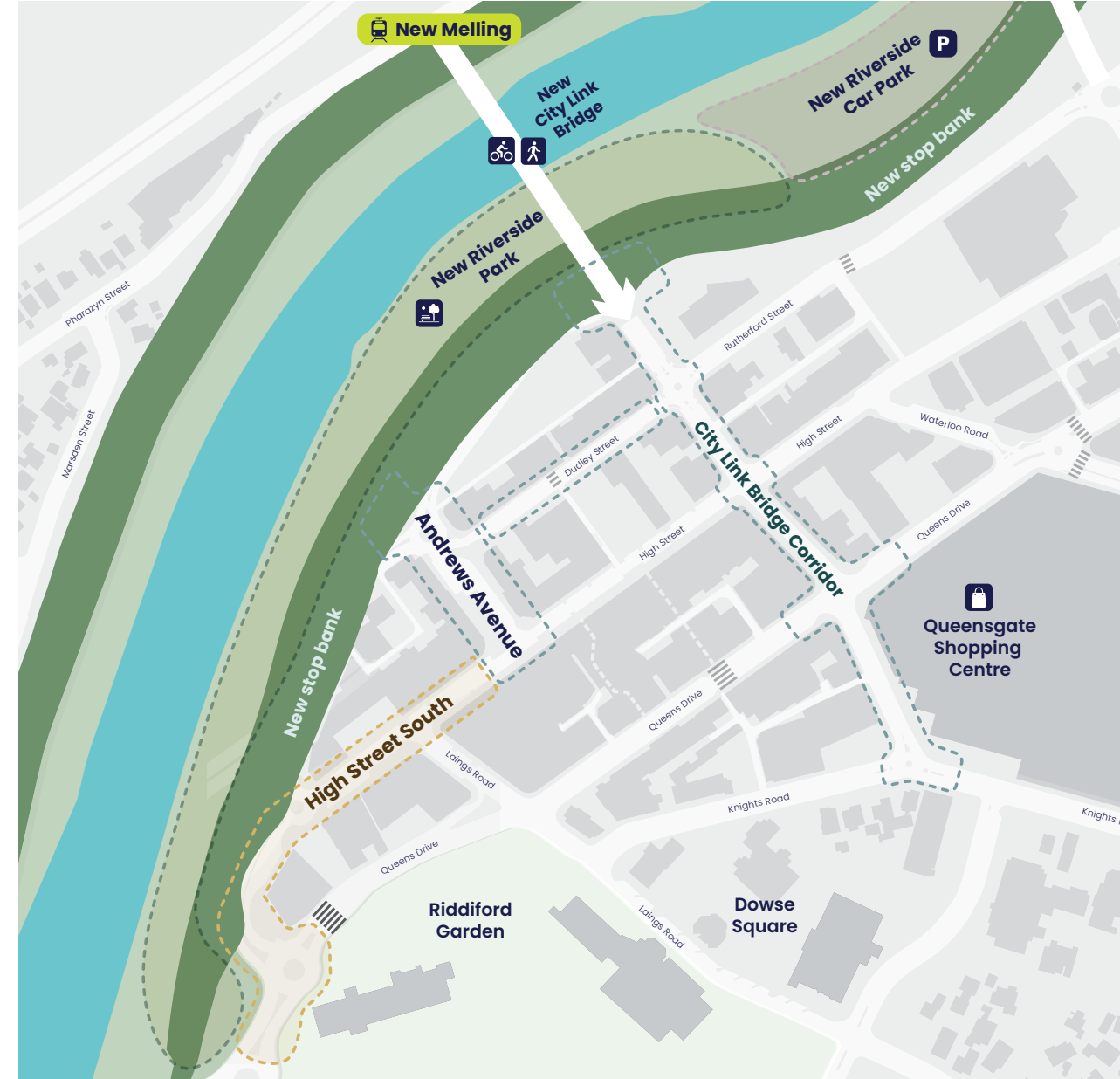


High Street South



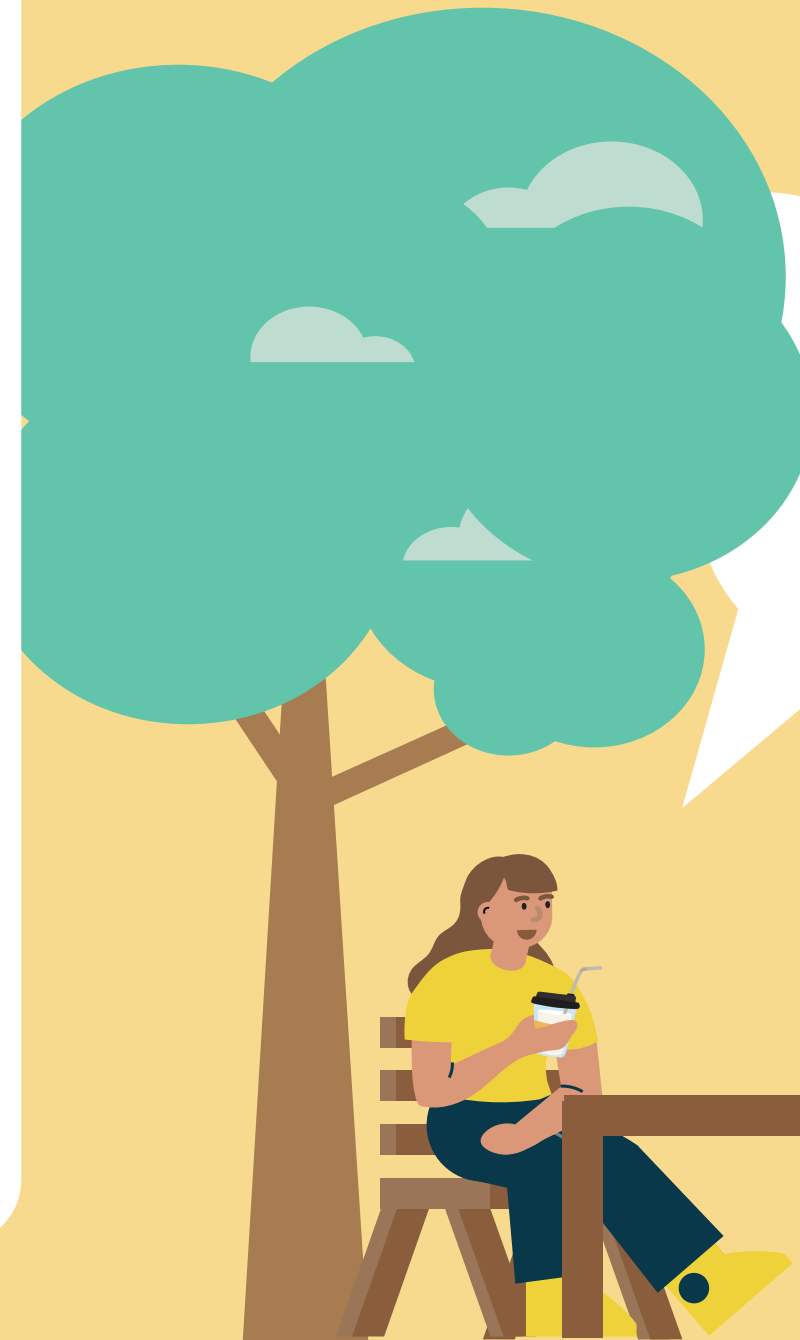
We are upgrading this area because:

The removal of Daly Street and High Street roundabout to upgrade the stop bank means the southern end of the street needs to be redesigned.

Our communities value the recent improvements to High Street between Andrews Ave and Margaret Street, such as the festoon lighting, footpaths and new seating. They would like to see the southern end of High Street tidied and uplifted the same way.

What we've heard about this street:

- The area feels tired and run down – especially compared to the section of High Street between Andrews Avenue and Margaret Street
- The connection between the river and High Street could be improved.
- Crossing the road is difficult with a lack of crossing points.
- Not enough lighting makes it feel unsafe.



More trees please!?

What do **you** think?

Join the kōrero, have your say by **8 May 2026**:

hutt.city/streetscapes

High Street South – current state

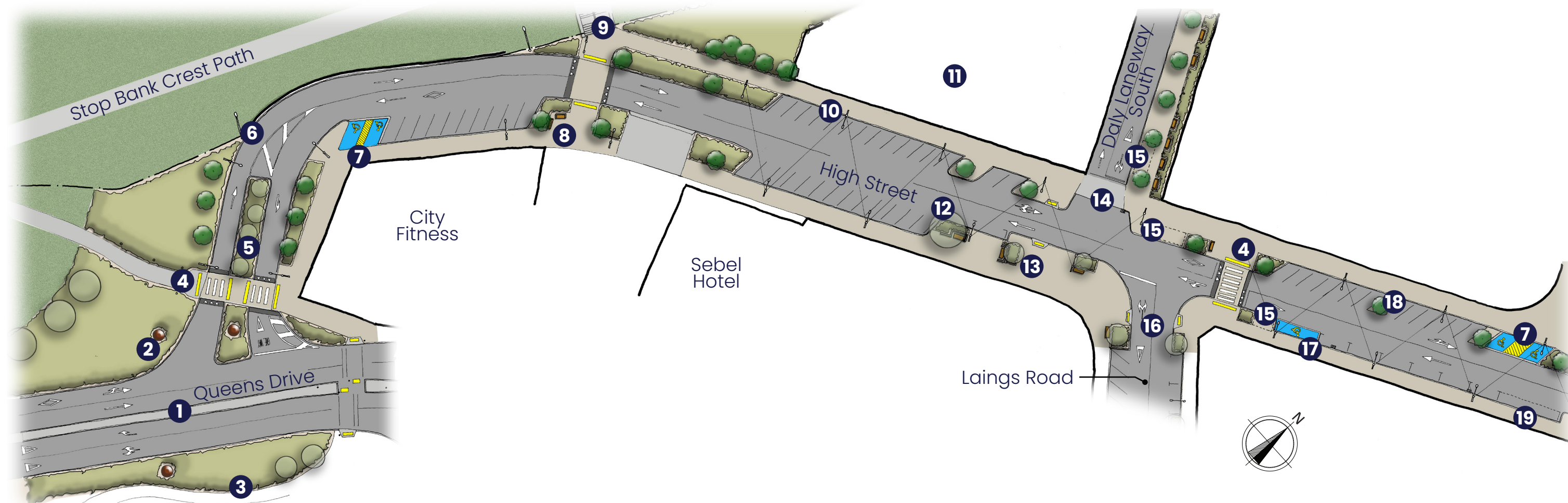


High Street South



What are we proposing?

- 1 Roundabout removed - central raised median installed, creating a left-in / left-out from High Street
- 2 Pouwhenua (carved wooden posts) marking opportunities at entrance to Te Awa Kairangi ki Tai / Lower Hutt CBD
- 3 Road realignment creates space for planting and existing path to be widened
- 4 Raised pedestrian crossings
- 5 Existing trees retained and traffic lanes repositioned
- 6 Path lighting along stop bank crest
- 7 Accessible parking with level access to footpath and 3m wide central aisle
- 8 New seating and planting
- 9 Pedestrian crossing and stair access to stop bank crest path and Riverside Park
- 10 Continuation of High Street light poles and festoon lighting to match the section between Andrews Ave and Margaret Street
- 11 Indicative future development site
- 12 Existing trees
- 13 Renovation or renewal of existing seating
- 14 Proposed realignment of Daly Laneway South, extends to join High Street, with seating, planting and lighting opportunities
- 15 Space for outdoor cafe seating areas, existing and proposed
- 16 Kerb build outs to reduce crossing distances
- 17 Parallel accessible parking bay with level access to footpath
- 18 New trees
- 19 P10 accessible drop off and loading zone



High Street South - proposed

