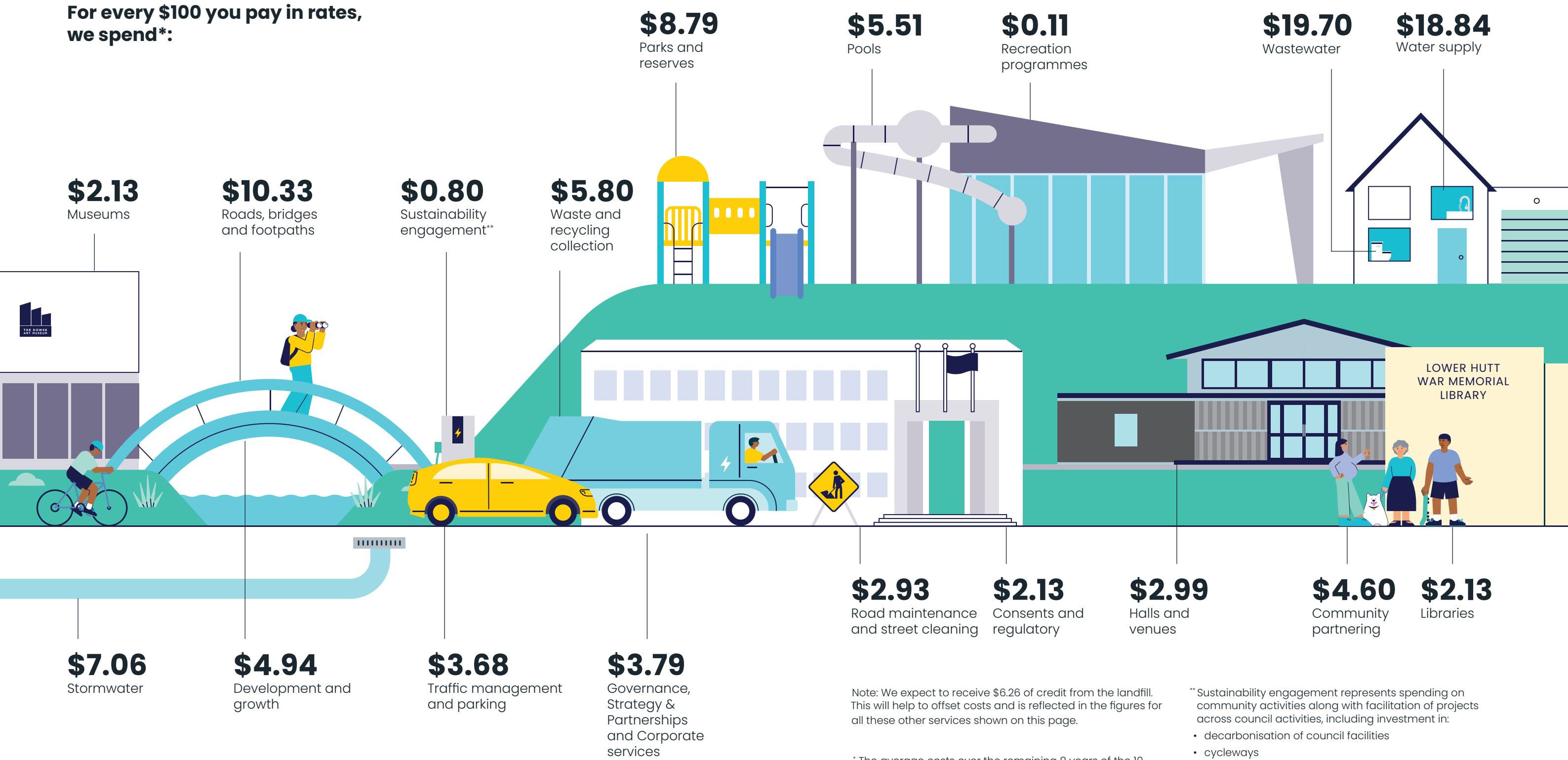


Striking the right balance

Where will my rates be spent?



For every \$100 you pay in rates, we spend*:



Note: We expect to receive \$6.26 of credit from the landfill. This will help to offset costs and is reflected in the figures for all these other services shown on this page.

* The average costs over the remaining 8 years of the 10-Year Plan are presented here.

** Sustainability engagement represents spending on community activities along with facilitation of projects across council activities, including investment in:

- decarbonisation of council facilities
- cycleways
- RiverLink
- healthy urban waterways