

Land (Railway Boundary)



Rail Vibration Layer



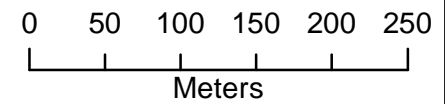
**Note: Lease boundary to be 5m from track centreline**

**Lower Hutt City  
Rail Vibration Layer  
1**



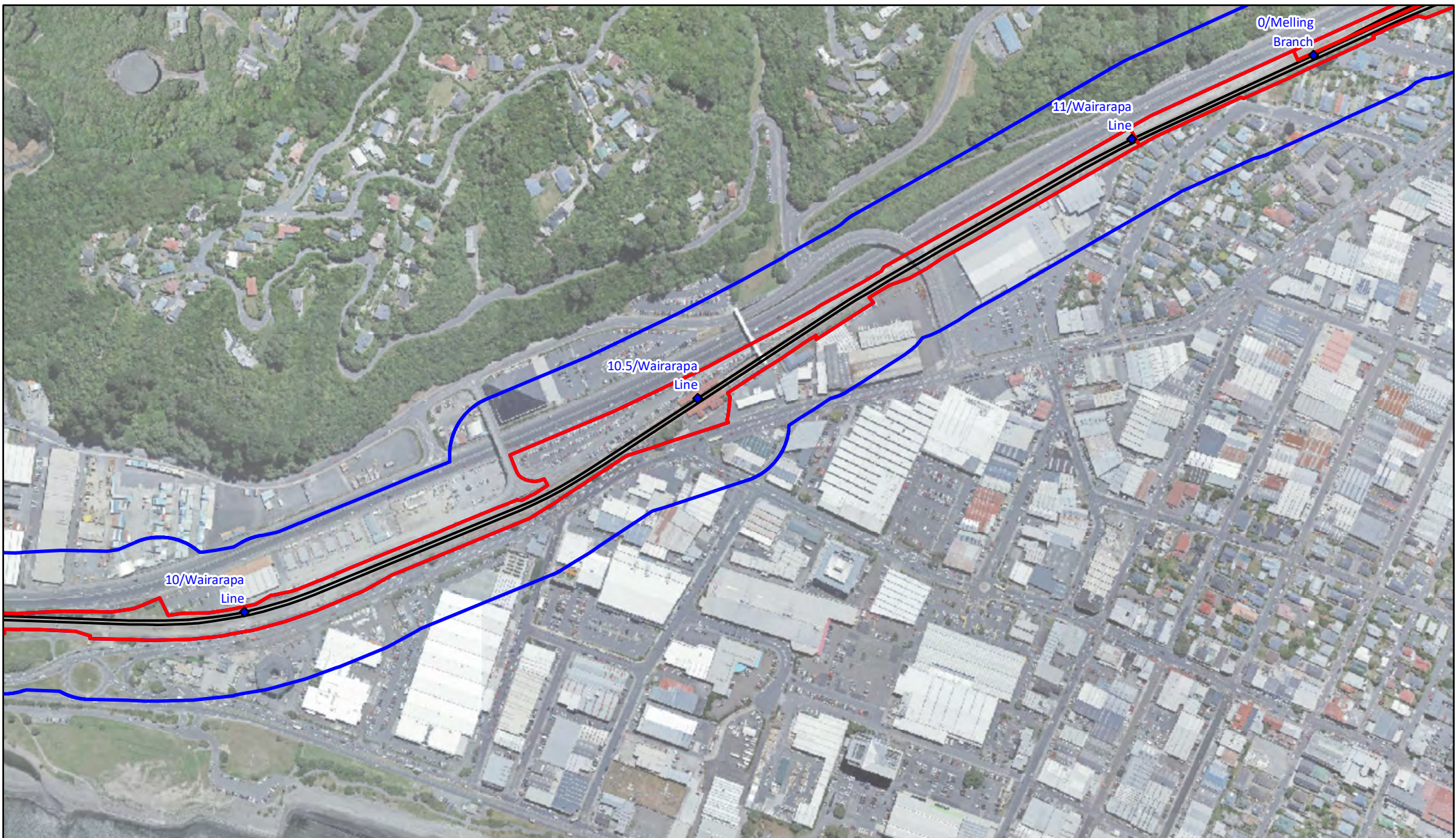
A4

1:5,000



4/05/2023

Copyright © KiwiRail  
 LINZ data licensed under CC BY 3.0 NZ <http://data.linz.govt.nz>  
 © OpenStreetMap contributors  
 The information displayed here is indicative only  
 This data is made available in good faith but its accuracy or completeness is not guaranteed



Land (Railway Boundary)



Rail Vibration Layer



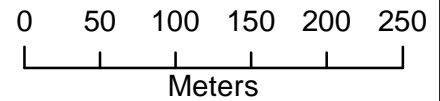
**Note: Lease boundary to be 5m from track centreline**

**Lower Hutt City  
Rail Vibration Layer  
2**



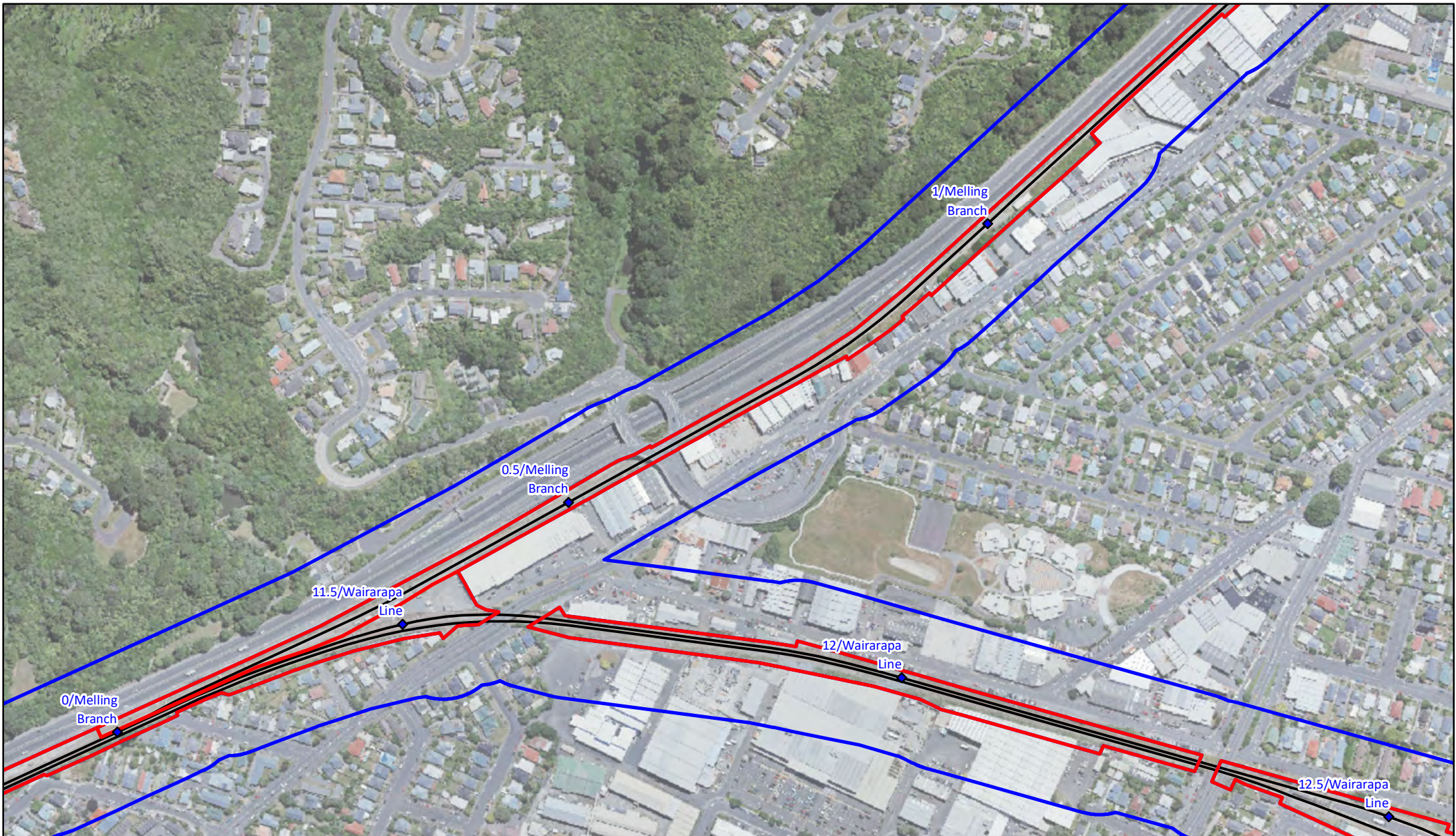
A4

1:5,000



4/05/2023

Copyright © KiwiRail  
 LINZ data licensed under CC BY 3.0 NZ <http://data.linz.govt.nz>  
 © OpenStreetMap contributors  
 The information displayed here is indicative only  
 This data is made available in good faith but its accuracy or completeness is not guaranteed



Land (Railway Boundary)



Rail Vibration Layer



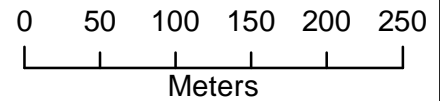
**Note: Lease boundary to be 5m from track centreline**

**Lower Hutt City  
Rail Vibration Layer  
3**



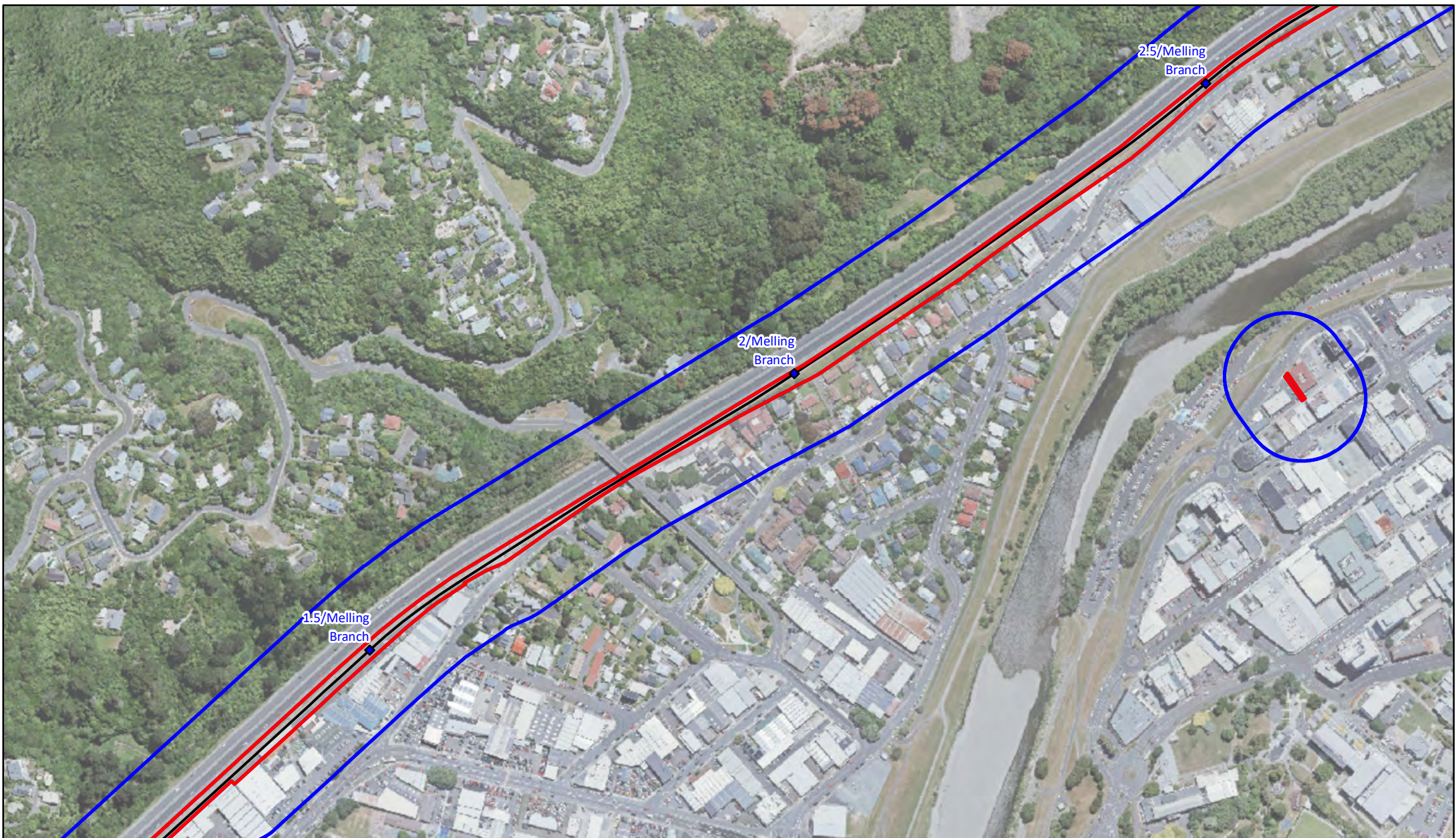
A4

1:5,000



4/05/2023

Copyright © KiwiRail  
 LINZ data licensed under CC BY 3.0 NZ <http://data.linz.govt.nz>  
 © OpenStreetMap contributors  
 The information displayed here is indicative only  
 This data is made available in good faith but its accuracy or completeness is not guaranteed



Land (Railway Boundary)



Rail Vibration Layer



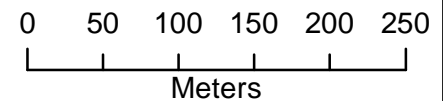
**Note: Lease boundary to be 5m from track centreline**

**Lower Hutt City  
Rail Vibration Layer  
4**



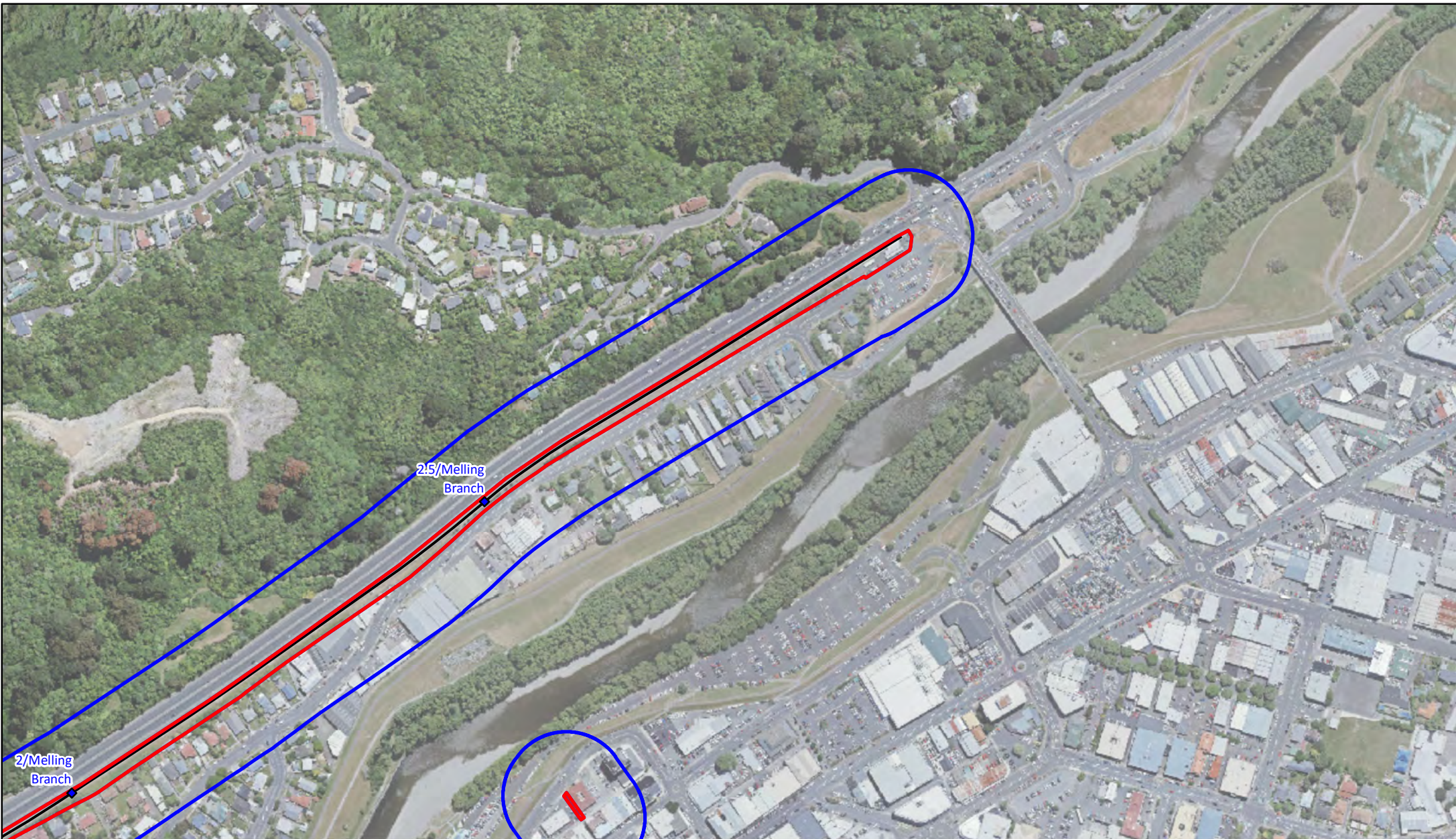
A4

1:5,000



4/05/2023

Copyright © KiwiRail  
 LINZ data licensed under CC BY 3.0 NZ <http://data.linz.govt.nz>  
 © OpenStreetMap contributors  
 The information displayed here is indicative only  
 This data is made available in good faith but its accuracy or completeness is not guaranteed



Land (Railway Boundary)



Rail Vibration Layer



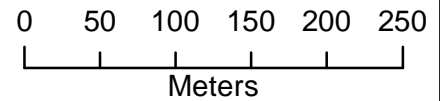
**Note: Lease boundary to be 5m from track centreline**

**Lower Hutt City  
Rail Vibration Layer  
5**



A4

1:5,000



4/05/2023

Copyright © KiwiRail  
 LINZ data licensed under CC BY 3.0 NZ <http://data.linz.govt.nz>  
 © OpenStreetMap contributors  
 The information displayed here is indicative only  
 This data is made available in good faith but its accuracy or completeness is not guaranteed



Land (Railway Boundary)



Rail Vibration Layer



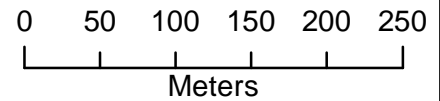
**Note: Lease boundary to be 5m from track centreline**

**Lower Hutt City  
Rail Vibration Layer  
6**



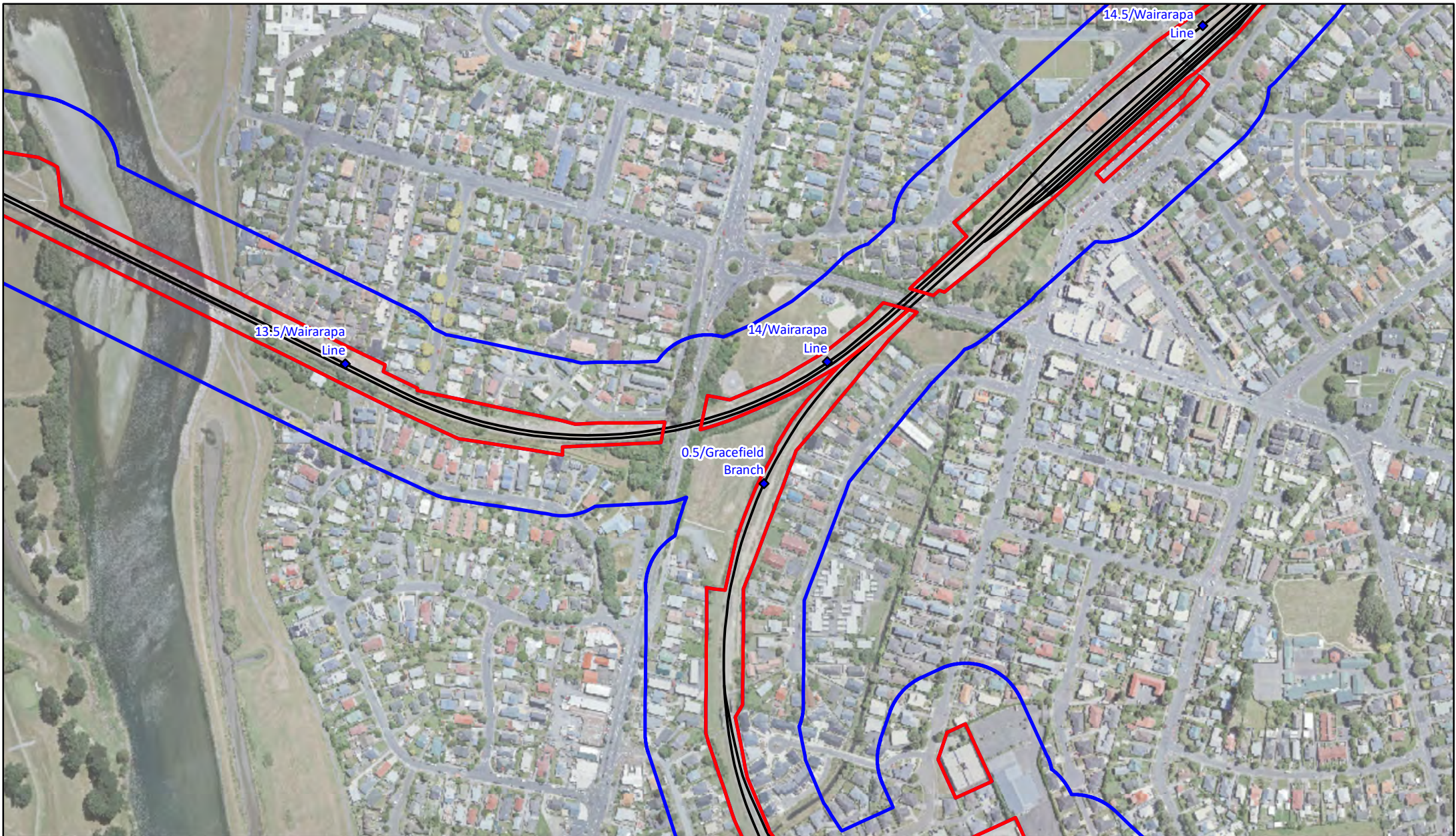
A4

1:5,000



4/05/2023

Copyright © KiwiRail  
 LINZ data licensed under CC BY 3.0 NZ <http://data.linz.govt.nz>  
 © OpenStreetMap contributors  
 The information displayed here is indicative only  
 This data is made available in good faith but its accuracy or completeness is not guaranteed



Land (Railway Boundary)



Rail Vibration Layer



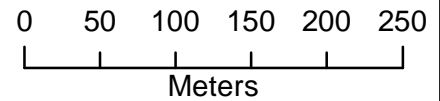
**Note: Lease boundary to be 5m from track centreline**

**Lower Hutt City  
Rail Vibration Layer  
7**



A4

1:5,000



4/05/2023

Copyright © KiwiRail  
 LINZ data licensed under CC BY 3.0 NZ <http://data.linz.govt.nz>  
 © OpenStreetMap contributors  
 The information displayed here is indicative only  
 This data is made available in good faith but its accuracy or completeness is not guaranteed



Land (Railway Boundary)



Rail Vibration Layer



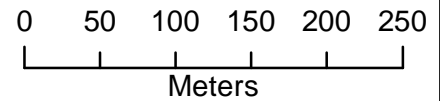
**Note: Lease boundary to be 5m from track centreline**

**Lower Hutt City  
Rail Vibration Layer  
8**



A4

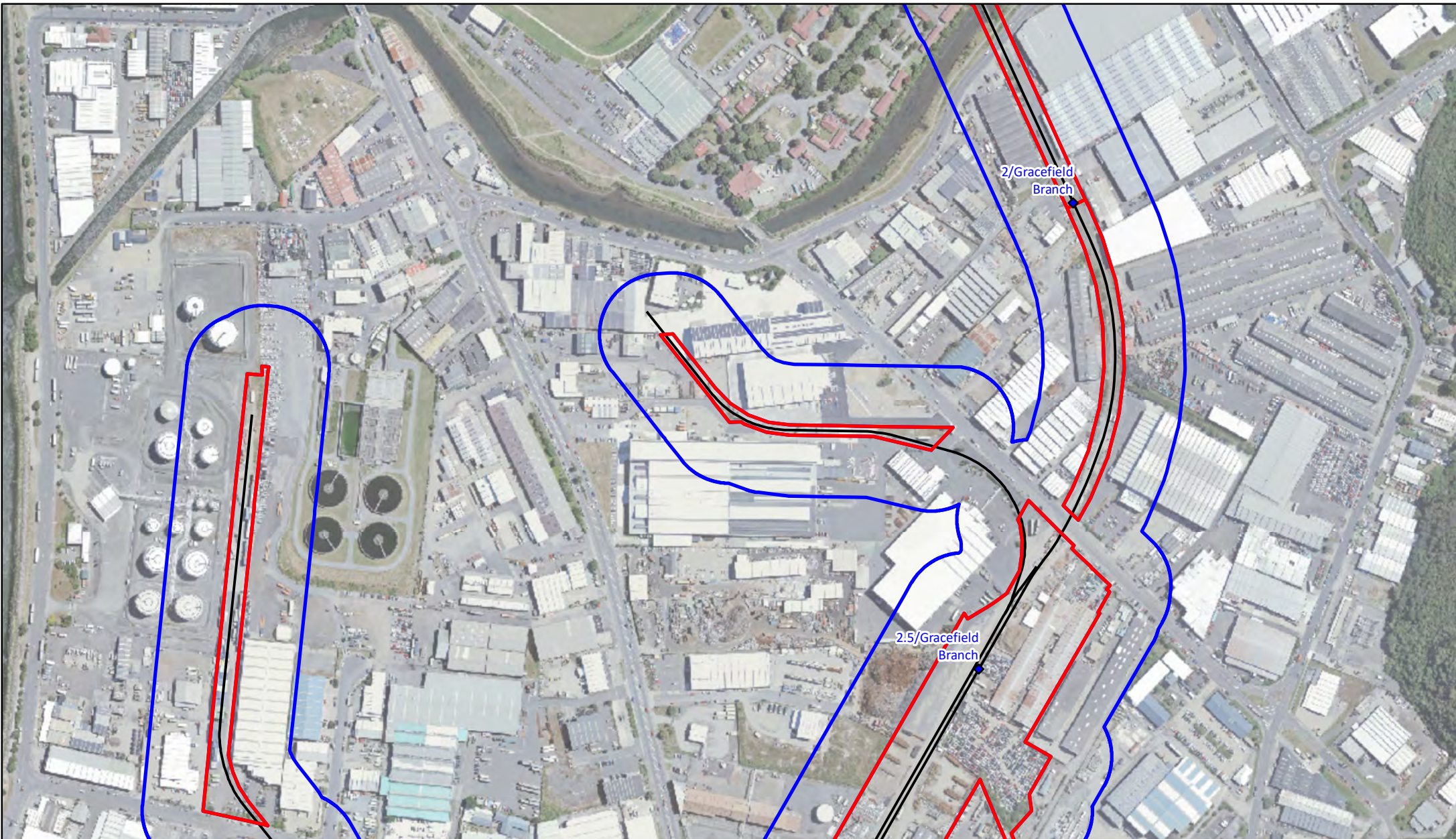
1:5,000



4/05/2023

Copyright © KiwiRail  
 LINZ data licensed under CC BY 3.0 NZ <http://data.linz.govt.nz>  
 © OpenStreetMap contributors  
 The information displayed here is indicative only  
 This data is made available in good faith but its accuracy or completeness is not guaranteed





Land (Railway Boundary)



Rail Vibration Layer



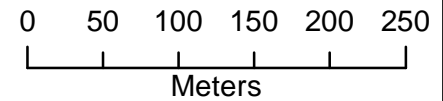
**Note: Lease boundary to be 5m from track centreline**

**Lower Hutt City  
Rail Vibration Layer  
9**



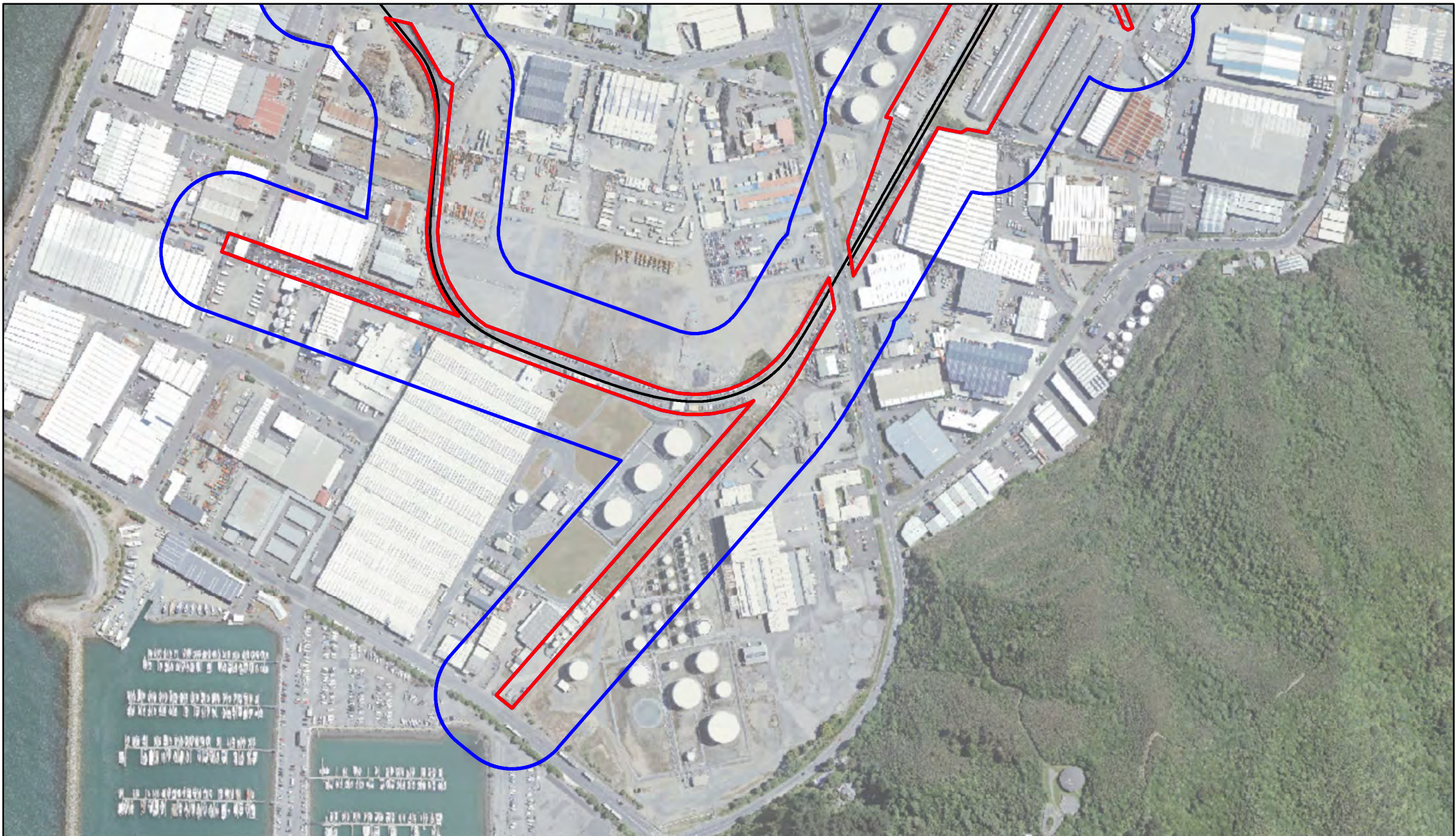
A4

1:5,000



4/05/2023

Copyright © KiwiRail  
 LINZ data licensed under CC BY 3.0 NZ <http://data.linz.govt.nz>  
 © OpenStreetMap contributors  
 The information displayed here is indicative only  
 This data is made available in good faith but its accuracy or completeness is not guaranteed



Land (Railway Boundary)



Rail Vibration Layer



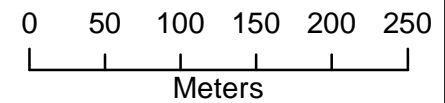
**Note:** Lease boundary to be 5m from track centreline

**Lower Hutt City  
Rail Vibration Layer  
10**



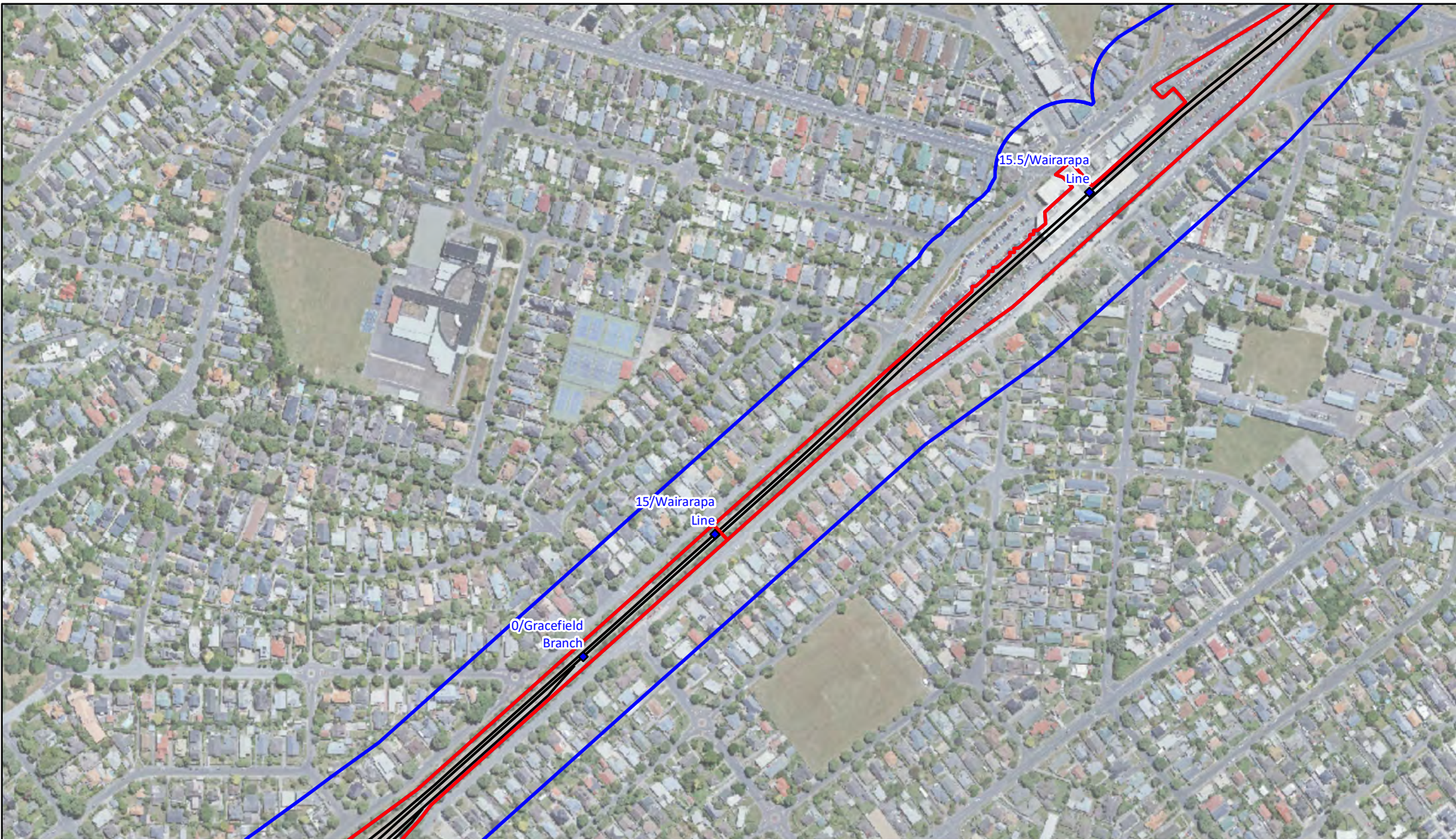
A4

1:5,000



4/05/2023

Copyright © KiwiRail  
 LINZ data licensed under CC BY 3.0 NZ <http://data.linz.govt.nz>  
 © OpenStreetMap contributors  
 The information displayed here is indicative only  
 This data is made available in good faith but its accuracy or completeness is not guaranteed



Land (Railway Boundary)



Rail Vibration Layer



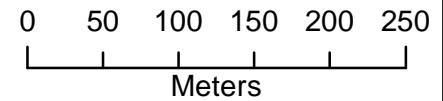
**Note: Lease boundary to be 5m from track centreline**

**Lower Hutt City  
Rail Vibration Layer  
11**



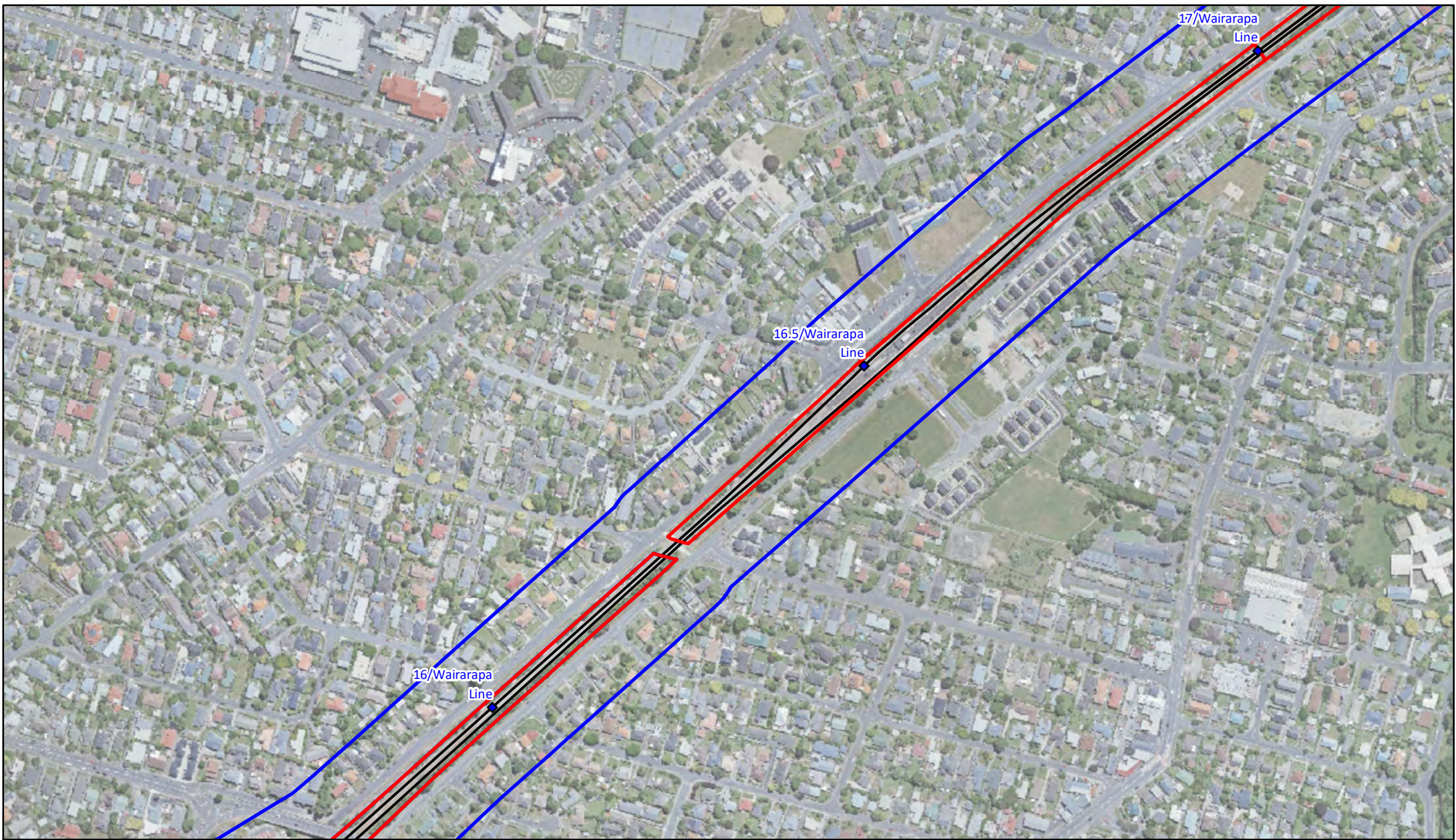
A4

1:5,000



4/05/2023

Copyright © KiwiRail  
 LINZ data licensed under CC BY 3.0 NZ <http://data.linz.govt.nz>  
 © OpenStreetMap contributors  
 The information displayed here is indicative only  
 This data is made available in good faith but its accuracy or completeness is not guaranteed



Land (Railway Boundary)



Rail Vibration Layer



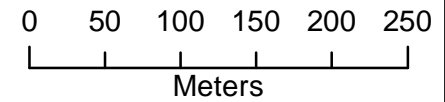
**Note: Lease boundary to be 5m from track centreline**

**Lower Hutt City  
Rail Vibration Layer  
12**



A4

1:5,000



4/05/2023

Copyright © KiwiRail  
 LINZ data licensed under CC BY 3.0 NZ <http://data.linz.govt.nz>  
 © OpenStreetMap contributors  
 The information displayed here is indicative only  
 This data is made available in good faith but its accuracy or completeness is not guaranteed



Land (Railway Boundary)



Rail Vibration Layer



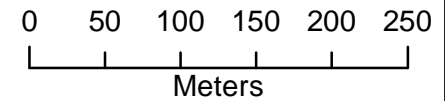
**Note: Lease boundary to be 5m from track centreline**

**Lower Hutt City  
Rail Vibration Layer  
13**



A4

1:5,000



4/05/2023

Copyright © KiwiRail  
 LINZ data licensed under CC BY 3.0 NZ <http://data.linz.govt.nz>  
 © OpenStreetMap contributors  
 The information displayed here is indicative only  
 This data is made available in good faith but its accuracy or completeness is not guaranteed



Land (Railway Boundary)



Rail Vibration Layer



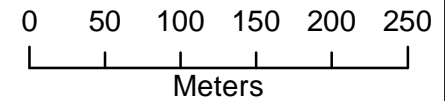
**Note: Lease boundary to be 5m from track centreline**

**Lower Hutt City  
Rail Vibration Layer  
14**



A4

1:5,000



4/05/2023

Copyright © KiwiRail  
 LINZ data licensed under CC BY 3.0 NZ <http://data.linz.govt.nz>  
 © OpenStreetMap contributors  
 The information displayed here is indicative only  
 This data is made available in good faith but its accuracy or completeness is not guaranteed



Land (Railway Boundary)



Rail Vibration Layer



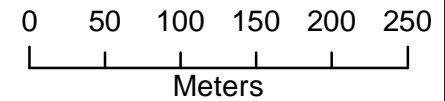
**Note: Lease boundary to be 5m from track centreline**

**Lower Hutt City  
Rail Vibration Layer  
15**



A4

1:5,000



4/05/2023

Copyright © KiwiRail  
 LINZ data licensed under CC BY 3.0 NZ <http://data.linz.govt.nz>  
 © OpenStreetMap contributors  
 The information displayed here is indicative only  
 This data is made available in good faith but its accuracy or completeness is not guaranteed



Land (Railway Boundary)



Rail Vibration Layer



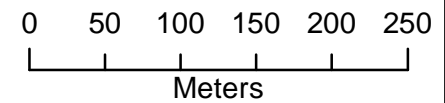
**Note: Lease boundary to be 5m from track centreline**

**Lower Hutt City  
Rail Vibration Layer  
16**



A4

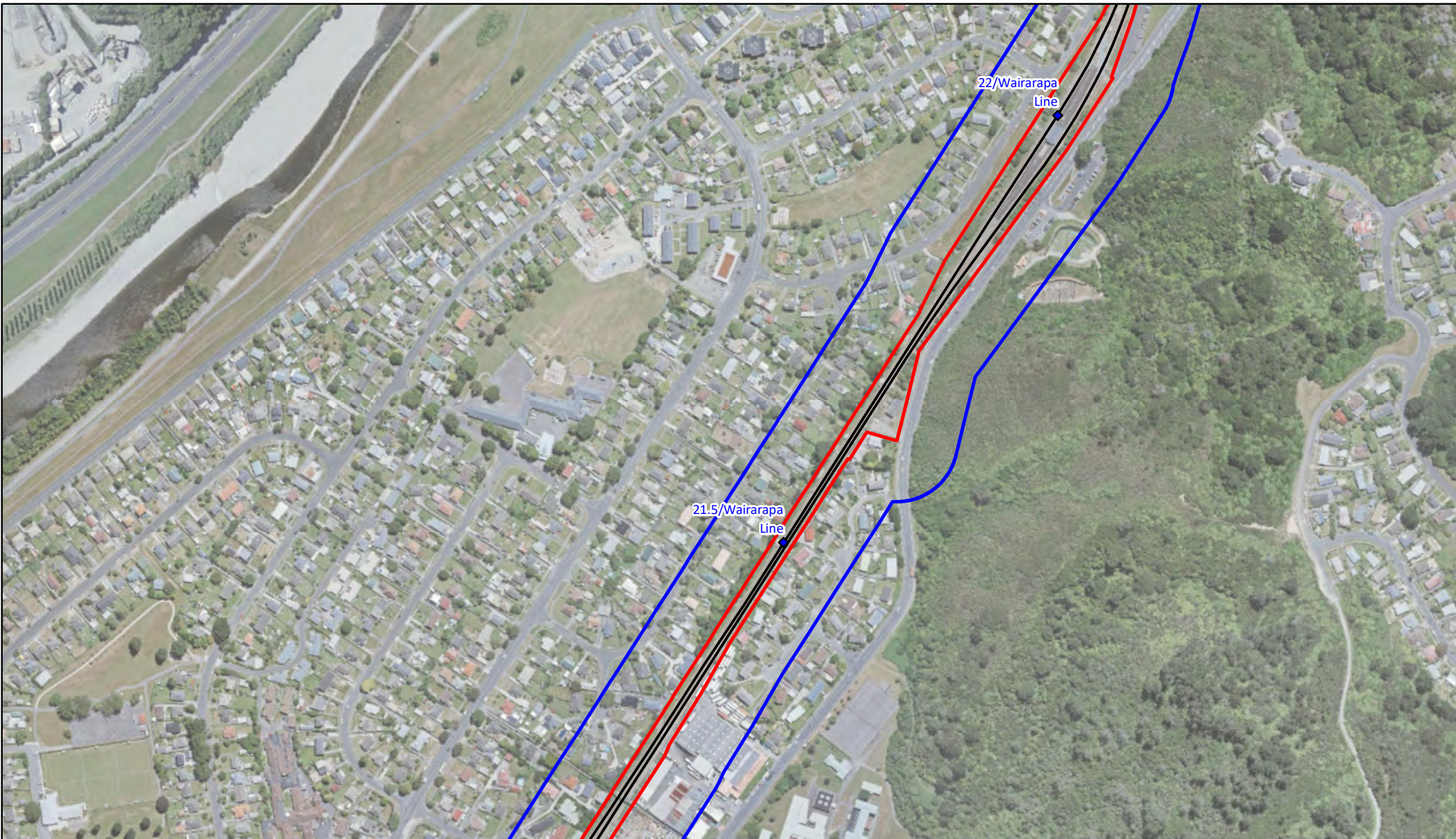
1:5,000



4/05/2023

Copyright © KiwiRail  
 LINZ data licensed under CC BY 3.0 NZ <http://data.linz.govt.nz>  
 © OpenStreetMap contributors  
 The information displayed here is indicative only  
 This data is made available in good faith but its accuracy or completeness is not guaranteed





Land (Railway Boundary)



Rail Vibration Layer



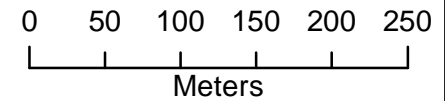
**Note: Lease boundary to be 5m from track centreline**

**Lower Hutt City  
Rail Vibration Layer  
17**



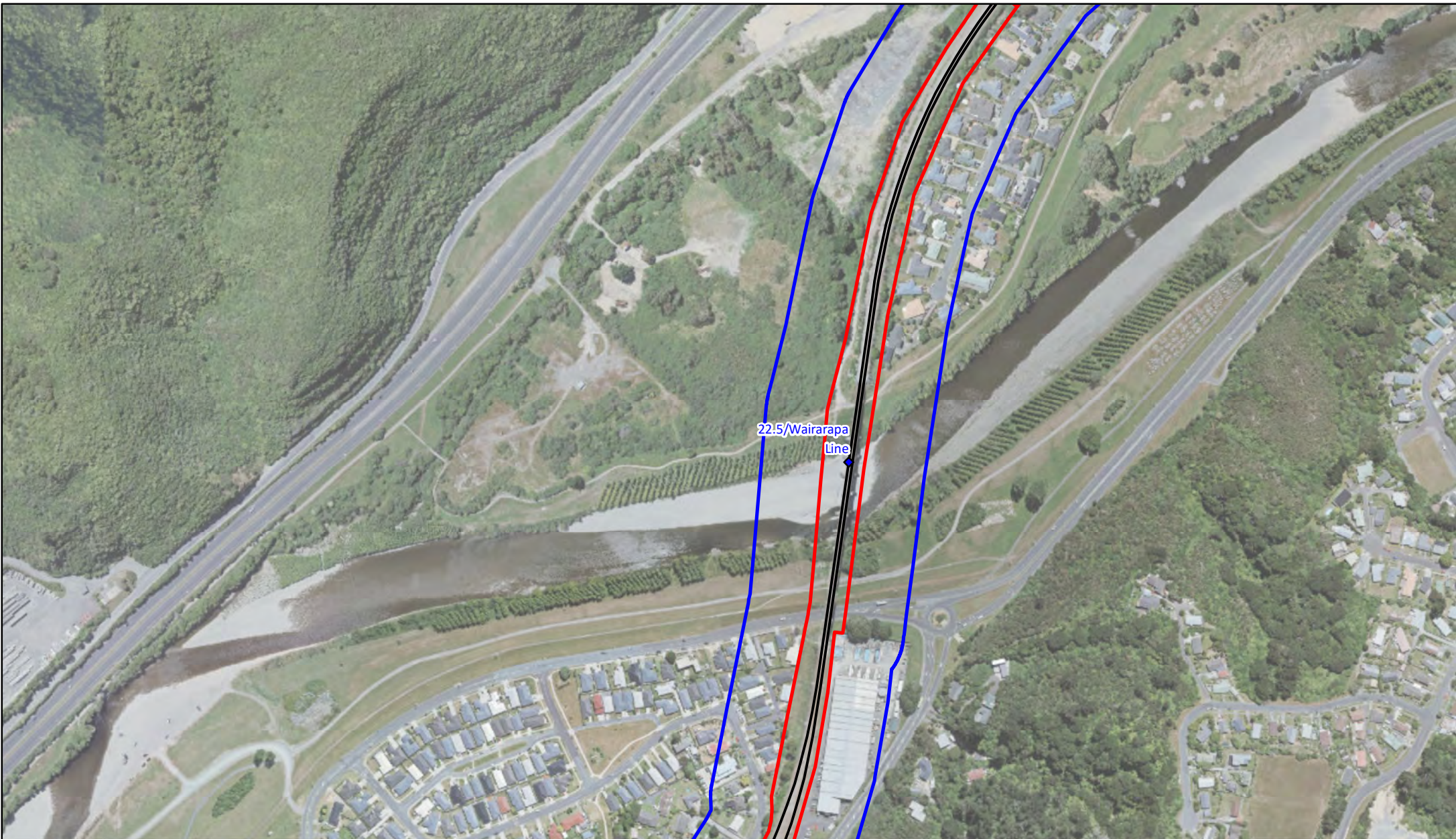
A4

1:5,000



4/05/2023

Copyright © KiwiRail  
 LINZ data licensed under CC BY 3.0 NZ <http://data.linz.govt.nz>  
 © OpenStreetMap contributors  
 The information displayed here is indicative only  
 This data is made available in good faith but its accuracy or completeness is not guaranteed



22.5/Wairarapa Line

Land (Railway Boundary)



Rail Vibration Layer



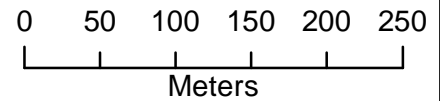
**Note: Lease boundary to be 5m from track centreline**

**Lower Hutt City  
Rail Vibration Layer  
18**



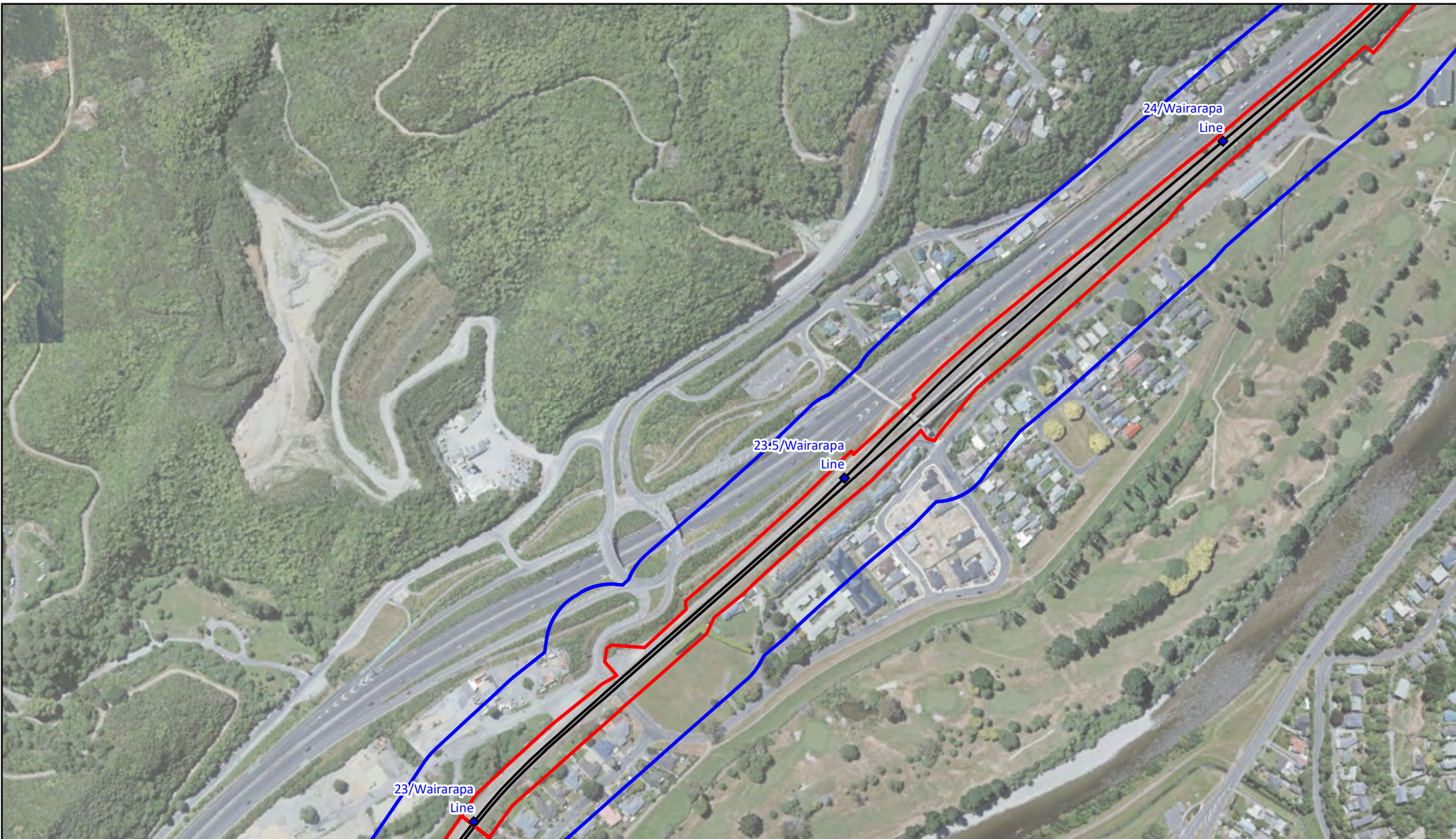
A4

1:5,000



4/05/2023

Copyright © KiwiRail  
 LINZ data licensed under CC BY 3.0 NZ <http://data.linz.govt.nz>  
 © OpenStreetMap contributors  
 The information displayed here is indicative only  
 This data is made available in good faith but its accuracy or completeness is not guaranteed



Land (Railway Boundary)



Rail Vibration Layer



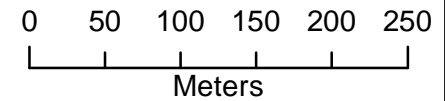
**Note: Lease boundary to be 5m from track centreline**

**Lower Hutt City  
Rail Vibration Layer  
19**



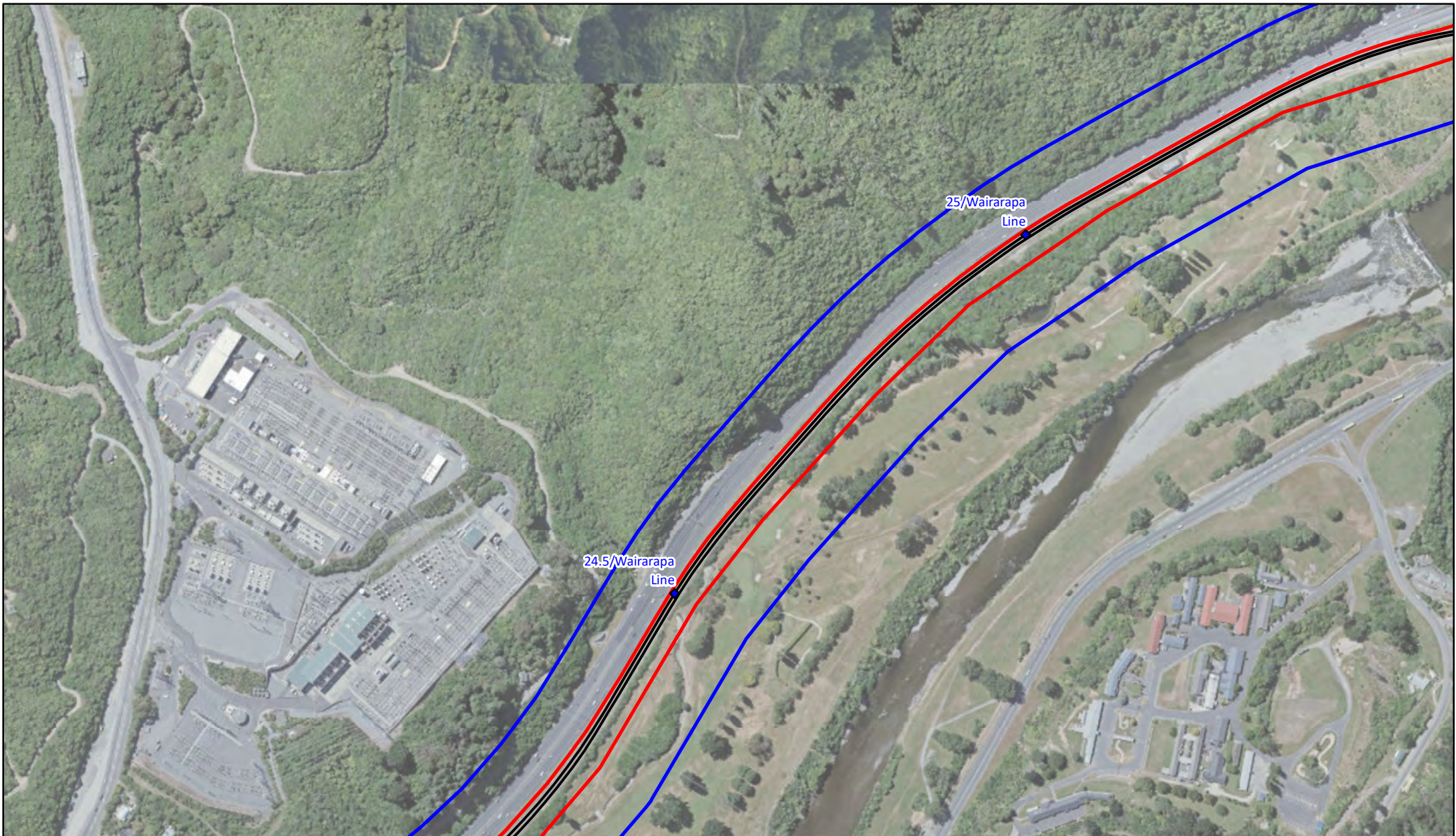
A4

1:5,000



4/05/2023

Copyright © KiwiRail  
 LINZ data licensed under CC BY 3.0 NZ <http://data.linz.govt.nz>  
 © OpenStreetMap contributors  
 The information displayed here is indicative only  
 This data is made available in good faith but its accuracy or completeness is not guaranteed



Land (Railway Boundary)



Rail Vibration Layer



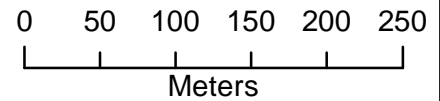
**Note: Lease boundary to be 5m from track centreline**

**Lower Hutt City  
Rail Vibration Layer  
20**



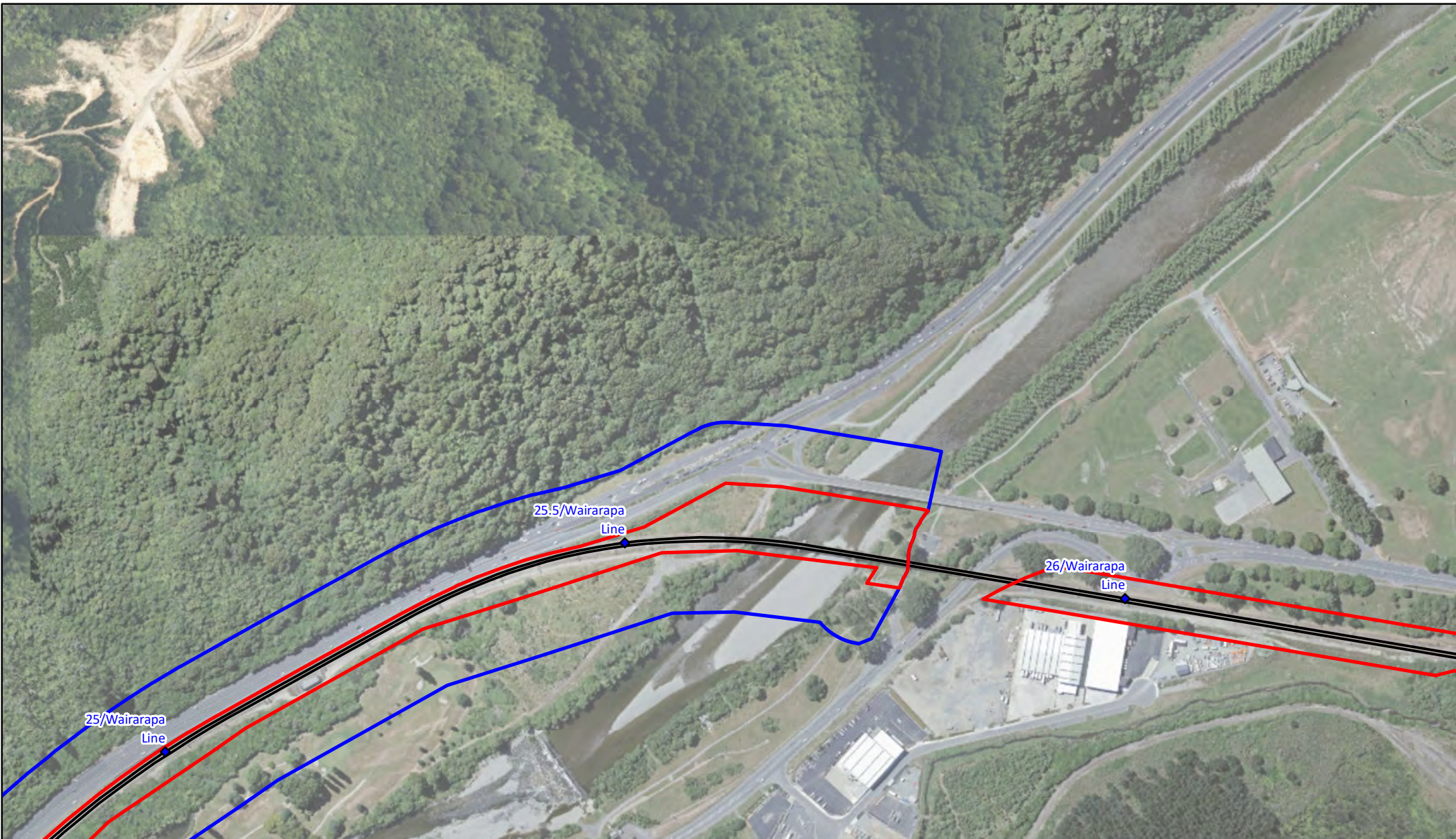
A4

1:5,000



4/05/2023

Copyright © KiwiRail  
 LINZ data licensed under CC BY 3.0 NZ <http://data.linz.govt.nz>  
 © OpenStreetMap contributors  
 The information displayed here is indicative only  
 This data is made available in good faith but its accuracy or completeness is not guaranteed



Land (Railway Boundary)



Rail Vibration Layer



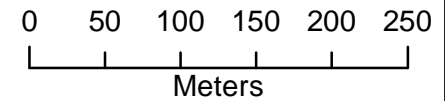
**Note: Lease boundary to be 5m from track centreline**

**Lower Hutt City  
Rail Vibration Layer  
21**



A4

1:5,000



4/05/2023

Copyright © KiwiRail  
 LINZ data licensed under CC BY 3.0 NZ <http://data.linz.govt.nz>  
 © OpenStreetMap contributors  
 The information displayed here is indicative only  
 This data is made available in good faith but its accuracy or completeness is not guaranteed