

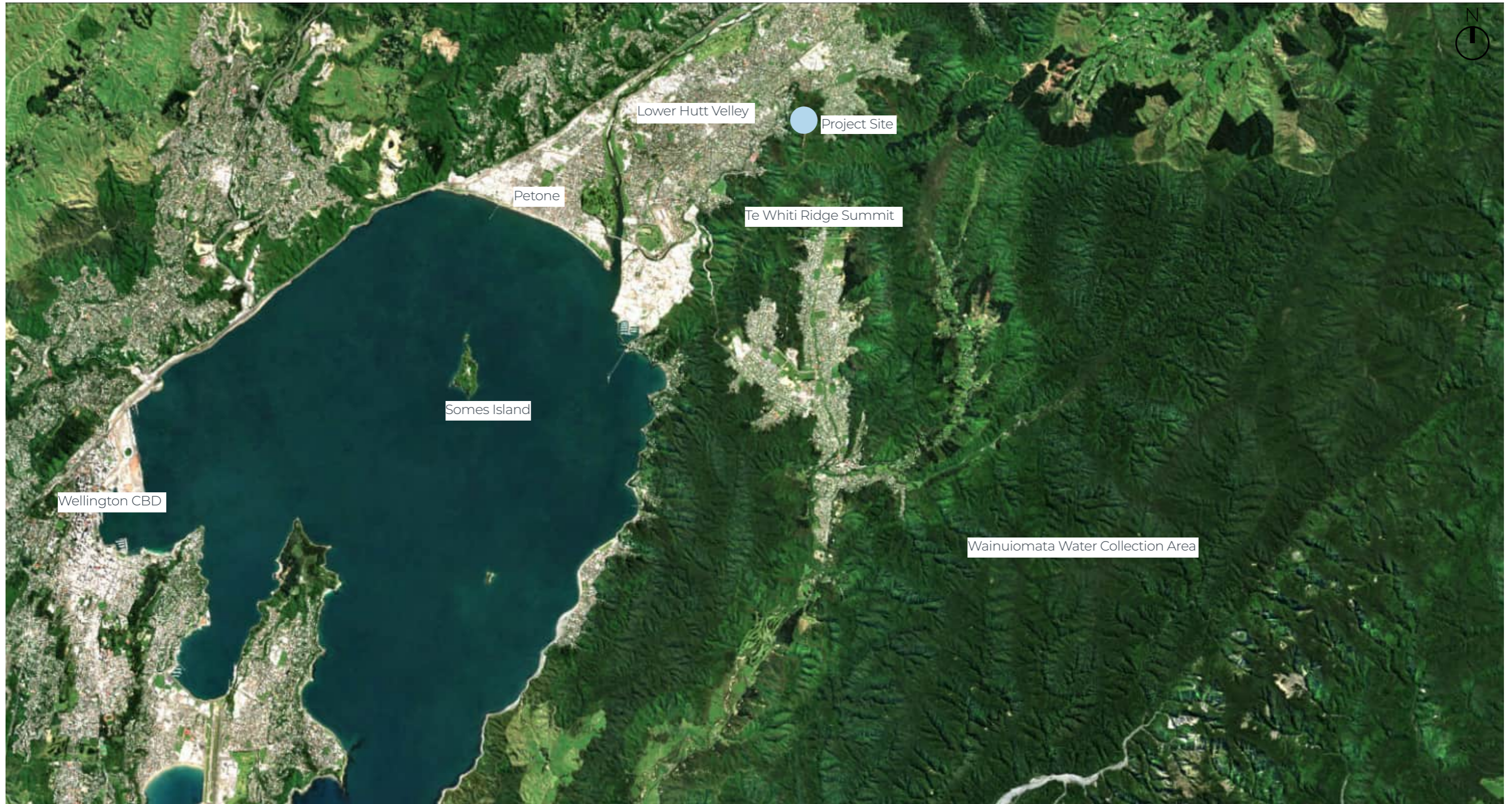
Eastern Hills Reservoir Landscape Assessment

Appendix B: Supporting Maps and Photo Essay

5 July 2024

Revision 5





Wider Context Map

Project Name: Eastern Hills Reservoir | Landscape and Visual Assessment

Date: 5 July 2024

Drawn By: Jack Dunnett

Scale: 1:75000

Reviewed By: Wendy Hoddinott

Status: Issued to Wellington Water **Version:** 5

Approved By: John Leatherbarrow **Sheet Number:** A001

Key

 Project Site



Significant Natural Resource Overlay and Proposed Site

Project Name: Eastern Hills Reservoir | Landscape and Visual Assessment

Date: 5 July 2024

Drawn By: Jack Dunnett

Scale: 1 : 7500

Reviewed By: Wendy Hoddinott

Status: Issued to Wellington Water **Version:** 5

Approved By: John Leatherbarrow **Sheet Number:** A002

Key

● Significant Natural Resource

● Project Site

— Waiwhetu Stream



ZTV Methodology

The map was completed in ArcPro using the Viewshed tool. The LiDAR and ground surfaces were resampled to 1m to use as the input raster. The reservoir boundary was used as the observer features. An 8m offset was applied to the reservoir boundary and the height for the reservoir was set to 8m.

ZTV Limitations

The ZTV maps the theoretical visibility of The Proposal. When examining ZTV maps, it is important to understand that:

- ZTV maps do not show how an element in the landscape will appear or the magnitude of visual effects as they only show an indicative area and the extent of the potential viewshed. For example, recessive colours are not considered, which typically reduces the visibility of buildings in the landscape substantially.
- ZTV maps do not take into consideration the potential screening effect of vegetation cover or structures within the area and are solely based on 'bare' topography. It is inevitable that in most cases there will be buildings and trees near most viewpoints that will interrupt or fully screen views of all sites and the proposal.
- The accuracy of ZTV maps is limited to the contour information/intervals. ZTV's are an assessment tool which produce a baseline of the potential maximum visibility of the element, however it does not consider the effects of distance of the viewer, intervening elements that may visually distract or detract from views, and atmospheric conditions such as sun/glare or humidity etc. The ZTV assumes an equal baseline condition for all views.

Zone of Theoretical Visibility Methodology

Project Name: Eastern Hills Reservoir | Landscape and Visual Assessment

Date: 5 July 2024

Scale: NTS

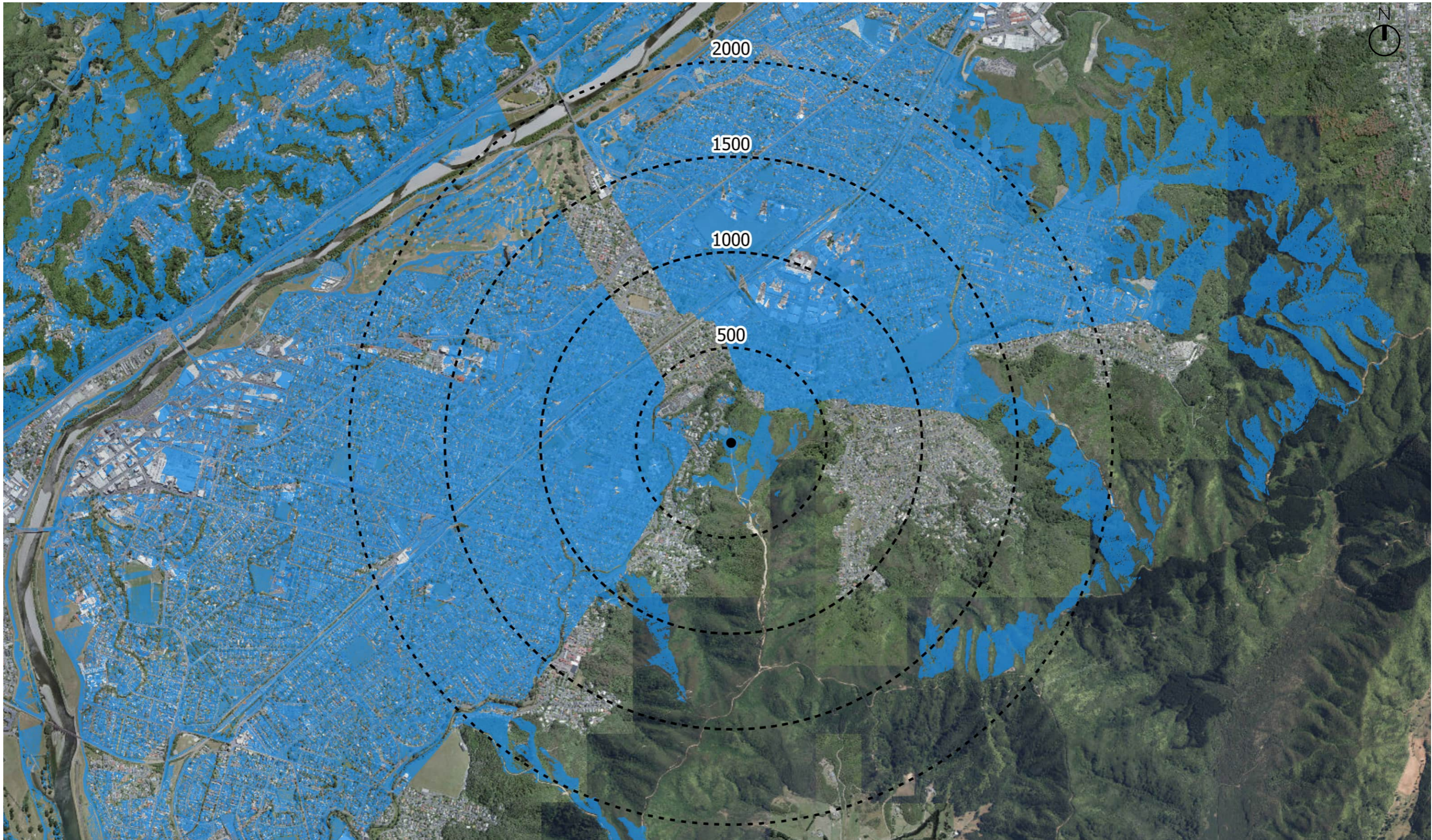
Status: Issued to Wellington Water **Version:** 5

Drawn By: Jack Dunnett

Reviewed By: Wendy Hoddinott

Approved By: John Leatherbarrow **Sheet Number:** LA003





Zone of Theoretical Visibility Map

Project Name: Eastern Hills Reservoir | Landscape and Visual Assessment

Date: 5-07-2024

Drawn By: Nate Andrews

Scale: 1:18,500 @ A3

Reviewed By: Andrew King

Status: Issued to Wellington Water **Version:** 5

Approved By: John Leatherbarrow **Sheet Number:** LA004

Key

 Viewshed

 500m offsets from site



Viewpoint Plan

Project Name: Eastern Hills Reservoir | Landscape and Visual Assessment

Date: 5 July 2024

Drawn By: Lawrence Elliott

Scale: 1:5,000 @ A3

Reviewed By: Andrew King

Status: Issued to Wellington Water **Version:** 5

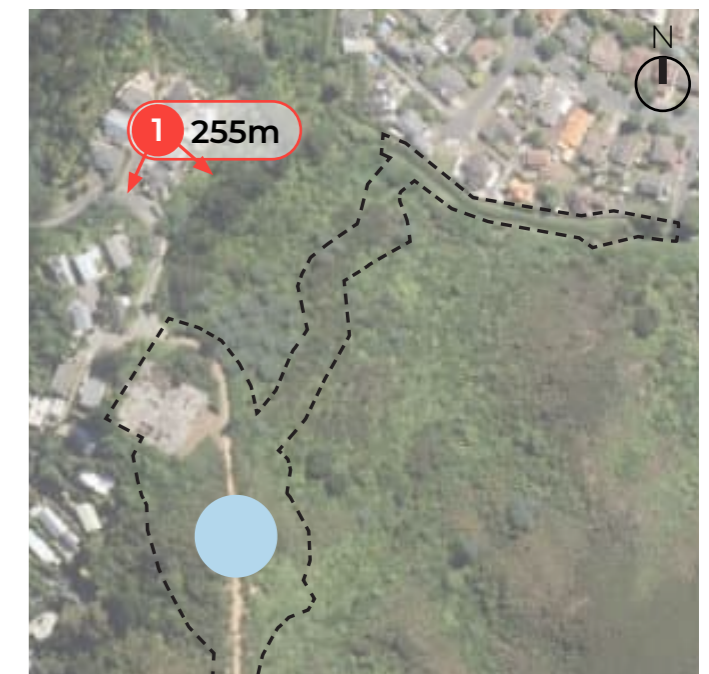
Approved By: John Leatherbarrow **Sheet Number:** LA005

- Key**
-  Photo/Viewpoint Location
 -  Project Site
 -  Proposed Reservoir





- Key**
-  Photo/ Viewpoint Location
 -  Project Site
 -  Proposed Reservoir



Scale: NTS

VP 1: View from outside 25 Summit Road looking south east towards the Proposed Site

Existing Conditions

Project Name: Eastern Hills Reservoir | Landscape and Visual Assessment

Date: 5 July 2024

Status: Issued to Wellington Water

Revision: 5

Sheet Number: LA006

Drawn By: Jack Dunnett

Reviewed By: Wendy Hoddinott

Approved By: John Leatherbarrow

Photo Location: -41.206102, 174.940651

Photo Taken By: Wendy Hoddinott

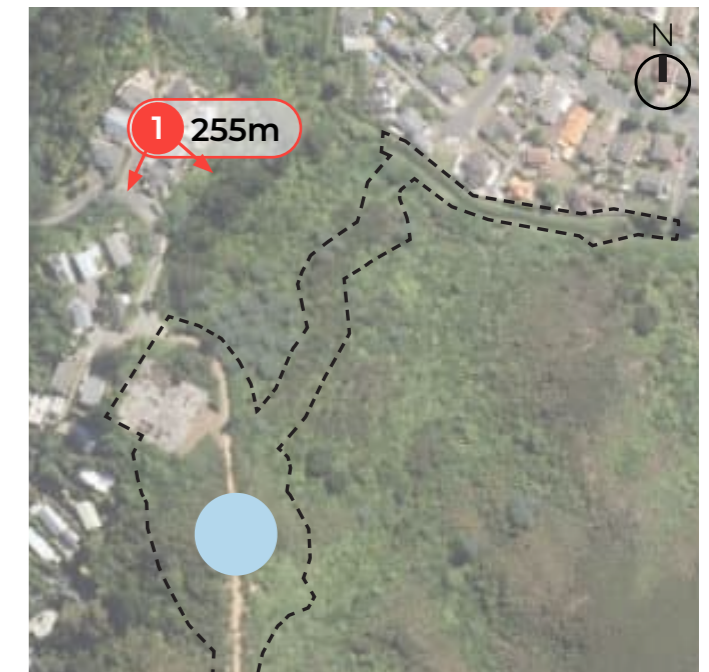
Photo Date: 1:18 pm on 15th March 2023

Camera: Photo taken using Canon Camera EOS 5D with 50mm lens





- Key**
-  Photo/ Viewpoint Location
 -  Project Site
 -  Proposed Reservoir



Scale: NTS

VP 1: View from outside 25 Summit Road looking south east towards the Proposed Site

No Mitigation

Project Name: Eastern Hills Reservoir | Landscape and Visual Assessment

Date: 5 July 2024

Status: Issued to Wellington Water

Revision: 5

Sheet Number: LA007

Drawn By: Jack Dunnett

Reviewed By: Wendy Hoddinott

Approved By: John Leatherbarrow

Photo Location: -41.206102, 174.940651

Photo Taken By: Wendy Hoddinott

Photo Date: 1:18 pm on 15th March 2023

Camera: Photo taken using Canon Camera EOS 5D with 50mm lens





- Key**
-  Photo/ Viewpoint Location
 -  Project Site
 -  Proposed Reservoir



Scale: NTS

VP 1: View from outside 25 Summit Road looking south east towards the Proposed Site

Mitigation

Project Name: Eastern Hills Reservoir | Landscape and Visual Assessment

Date: 5 July 2024

Status: Issued to Wellington Water

Revision: 5

Sheet Number: LA008

Drawn By: Jack Dunnett

Reviewed By: Wendy Hoddinott

Approved By: John Leatherbarrow

Photo Location: -41.206102, 174.940651

Photo Taken By: Wendy Hoddinott

Photo Date: 1:18 pm on 15th March 2023

Camera: Photo taken using Canon Camera EOS 5D with 50mm lens





- Key**
-  Photo/ Viewpoint Location
 -  Project Site
 -  Proposed Reservoir



Scale: NTS

VP 2: View from the western end of Summit Road looking east toward the Proposed Site

Existing Conditions

Project Name: Eastern Hills Reservoir | Landscape and Visual Assessment

Date: 5 July 2024

Status: Issued to Wellington Water

Revision: 5

Sheet Number: LA009

Drawn By: Jack Dunnett

Reviewed By: Wendy Hoddinott

Approved By: John Leatherbarrow

Photo Location: -41.207018, 174.93683

Photo Taken By: Wendy Hoddinott

Photo Date: 1:18 pm on 15th March 2023

Camera: Photo taken using Canon Camera EOS 5D with 50mm lens





- Key**
-  Photo/ Viewpoint Location
 -  Project Site
 -  Proposed Reservoir



Scale: NTS

VP 2: View from the western end of Summit Road looking east toward the Proposed Site

No Mitigation

Project Name: Eastern Hills Reservoir | Landscape and Visual Assessment

Date: 5 July 2024

Status: Issued to Wellington Water

Revision: 5

Sheet Number: LA010

Drawn By: Jack Dunnett

Reviewed By: Wendy Hoddinott

Approved By: John Leatherbarrow

Photo Location: -41.207018, 174.93683

Photo Taken By: Wendy Hoddinott

Photo Date: 1:18 pm on 15th March 2023

Camera: Photo taken using Canon Camera EOS 5D with 50mm lens





- Key**
-  Photo/ Viewpoint Location
 -  Project Site
 -  Proposed Reservoir



Scale: NTS

VP 2: View from the western end of Summit Road looking east toward the Proposed Site

Mitigation

Project Name: Eastern Hills Reservoir | Landscape and Visual Assessment

Date: 5 July 2024

Status: Issued to Wellington Water

Revision: 5

Sheet Number: LA011

Drawn By: Jack Dunnett

Reviewed By: Wendy Hoddinott

Approved By: John Leatherbarrow

Photo Location: -41.207018, 174.93683

Photo Taken By: Wendy Hoddinott

Photo Date: 1:18 pm on 15th March 2023

Camera: Photo taken using Canon Camera EOS 5D with 50mm lens





- Key**
-  Photo/ Viewpoint Location
 -  Project Site
 -  Proposed Reservoir



655m 3

Scale: NTS

VP 3: View from Purser Grove Playground looking east toward the Proposed Site

Existing Conditions

Project Name: Eastern Hills Reservoir | Landscape and Visual Assessment

Date: 5 July 2024

Status: Issued to Wellington Water

Revision: 5

Sheet Number: LA012

Drawn By: Jack Dunnett

Reviewed By: Wendy Hoddinott

Approved By: John Leatherbarrow

Photo Location: -41.206267, 174.934356

Photo Taken By: Wendy Hoddinott

Photo Date: 2.39 pm on 15th June 2023

Camera: Photo taken using Canon Camera EOS 5D with 50mm lens





Approximate extents of proposal

- Key**
-  Photo/ Viewpoint Location
 -  Project Site
 -  Proposed Reservoir



Scale: NTS

VP 3: View from Purser Grove Playground looking east toward the Proposed Site

No Mitigation

Project Name: Eastern Hills Reservoir | Landscape and Visual Assessment

Date: 5 July 2024

Status: Issued to Wellington Water

Revision: 5

Sheet Number: LA013

Drawn By: Jack Dunnett

Reviewed By: Wendy Hoddinott

Approved By: John Leatherbarrow

Photo Location: -41.206267, 174.934356

Photo Taken By: Wendy Hoddinott

Photo Date: 2.39 pm on 15th June 2023

Camera: Photo taken using Canon Camera EOS 5D with 50mm lens





- Key**
-  Photo/ Viewpoint Location
 -  Project Site
 -  Proposed Reservoir



Scale: NTS

VP 3: View from Purser Grove Playground looking east toward the Proposed Site

Mitigation

Project Name: Eastern Hills Reservoir | Landscape and Visual Assessment

Date: 5 July 2024

Status: Issued to Wellington Water

Revision: 5

Sheet Number: LA014

Drawn By: Jack Dunnett

Reviewed By: Wendy Hoddinott

Approved By: John Leatherbarrow

Photo Location: -41.206267, 174.934356

Photo Taken By: Wendy Hoddinott

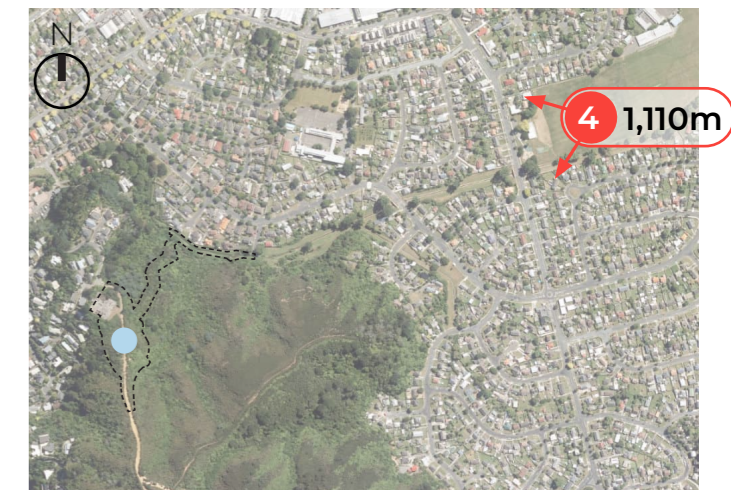
Photo Date: 2.39 pm on 15th June 2023

Camera: Photo taken using Canon Camera EOS 5D with 50mm lens





- Key**
-  Photo/ Viewpoint Location
 -  Project Site
 -  Proposed Reservoir



Scale: NTS

VP 4: View from the centre of Naenae Park looking west towards the Proposed Site

Existing Conditions

Project Name: Eastern Hills Reservoir | Landscape and Visual Assessment

Date: 5 July 2024

Status: Issued to Wellington Water

Revision: 5

Sheet Number: LA015

Drawn By: Jack Dunnett

Reviewed By: Wendy Hoddinott

Approved By: John Leatherbarrow

Photo Location: -41.203662, 174.952739

Photo Taken By: Wendy Hoddinott

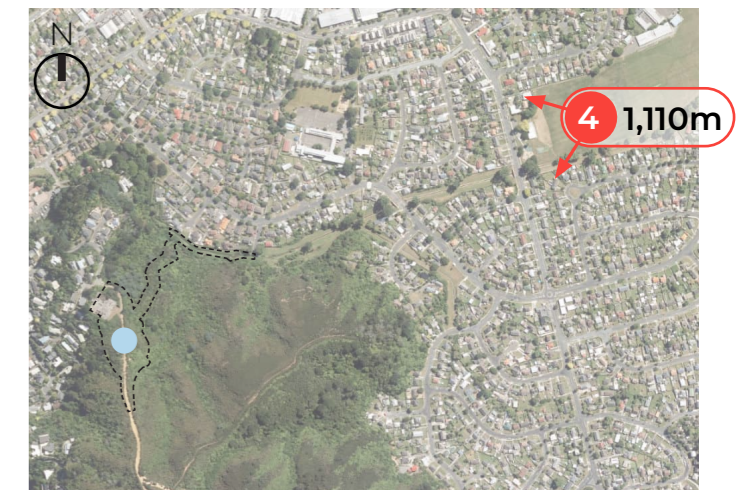
Photo Date: 2:03 pm on 15th March 2023

Camera: Photo taken using Canon Camera EOS 5D with 50mm lens





- Key**
-  Photo/ Viewpoint Location
 -  Project Site
 -  Proposed Reservoir



Scale: NTS

VP 4: View from the centre of Naenae Park looking west towards the Proposed Site

No Mitigation

Project Name: Eastern Hills Reservoir | Landscape and Visual Assessment

Date: 5 July 2024

Status: Issued to Wellington Water

Revision: 5

Sheet Number: LA016

Drawn By: Jack Dunnett

Reviewed By: Wendy Hoddinott

Approved By: John Leatherbarrow

Photo Location: -41.203662, 174.952739

Photo Taken By: Wendy Hoddinott

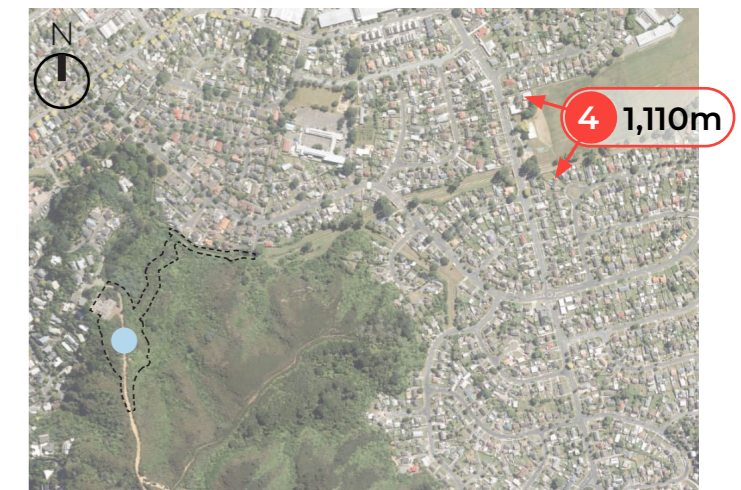
Photo Date: 2:03 pm on 15th March 2023

Camera: Photo taken using Canon Camera EOS 5D with 50mm lens





- Key**
-  Photo/ Viewpoint Location
 -  Project Site
 -  Proposed Reservoir



Scale: NTS

VP 4: View from the centre of Naenae Park looking west towards the Proposed Site

Mitigation

Project Name: Eastern Hills Reservoir | Landscape and Visual Assessment

Date: 5 July 2024

Status: Issued to Wellington Water

Revision: 5

Sheet Number: LA017

Drawn By: Jack Dunnett

Reviewed By: Wendy Hoddinott

Approved By: John Leatherbarrow

Photo Location: -41.203662, 174.952739

Photo Taken By:

Wendy Hoddinott

Photo Date:

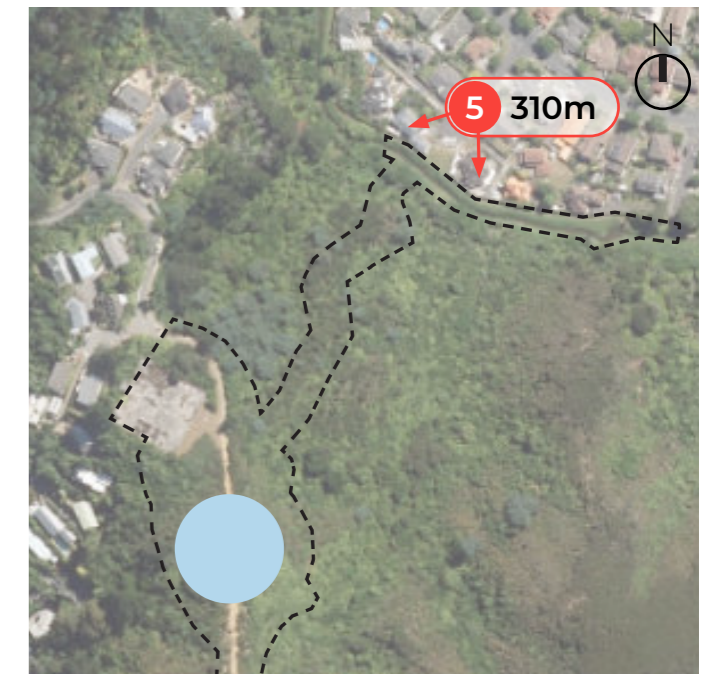
2:03 pm on 15th March 2023

Camera: Photo taken using Canon Camera EOS 5D with 50mm lens





- Key**
-  Photo/ Viewpoint Location
 -  Project Site
 -  Proposed Reservoir



Scale: NTS

VP 5: View from Balgownie Grove looking south-west towards the Proposed Site

Existing Conditions

Project Name: Eastern Hills Reservoir | Landscape and Visual Assessment

Date: 5 July 2024

Status: Issued to Wellington Water

Revision:

Sheet Number: LA018

Drawn By: Lawrence Elliott

Reviewed By: Wendy Hoddinott

Approved By: John Leatherbarrow

Photo Location: -41.205829, 174.942919

Photo Taken By: Wendy Hoddinott

Photo Date: 1:38 pm on 15th March 2023

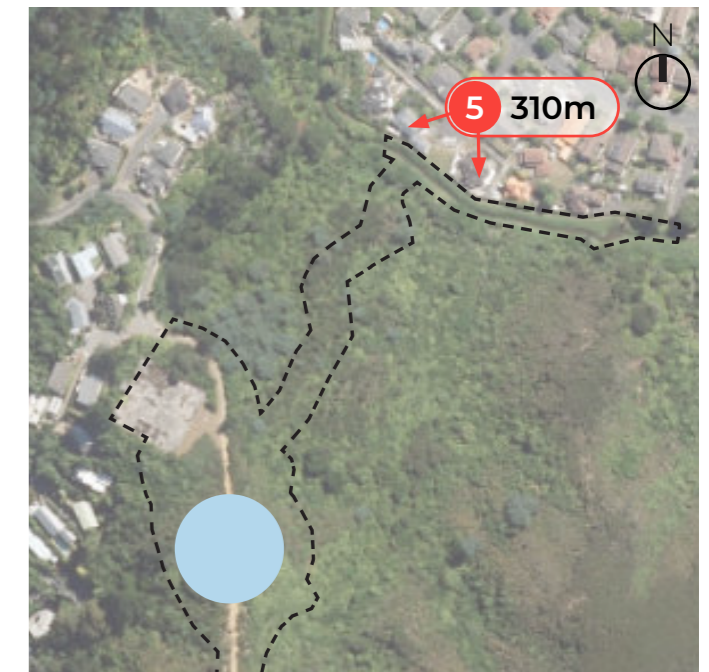
Camera: Photo taken using Canon Camera EOS 5D with 50mm





Approximate extents of proposal

- Key**
-  Photo/ Viewpoint Location
 -  Project Site
 -  Proposed Reservoir



Scale: NTS

VP 5: View from Balgownie Grove looking south-west towards the Proposed Site

No Mitigation

Project Name: Eastern Hills Reservoir | Landscape and Visual Assessment

Date: 5 July 2024

Status: Issued to Wellington Water

Revision: 1

Sheet Number: LA018

Drawn By: Lawrence Elliott

Reviewed By: Wendy Hoddinott

Approved By: John Leatherbarrow

Photo Location: -41.205829, 174.942919

Photo Taken By: Wendy Hoddinott

Photo Date: 1:38 pm on 15th March 2023

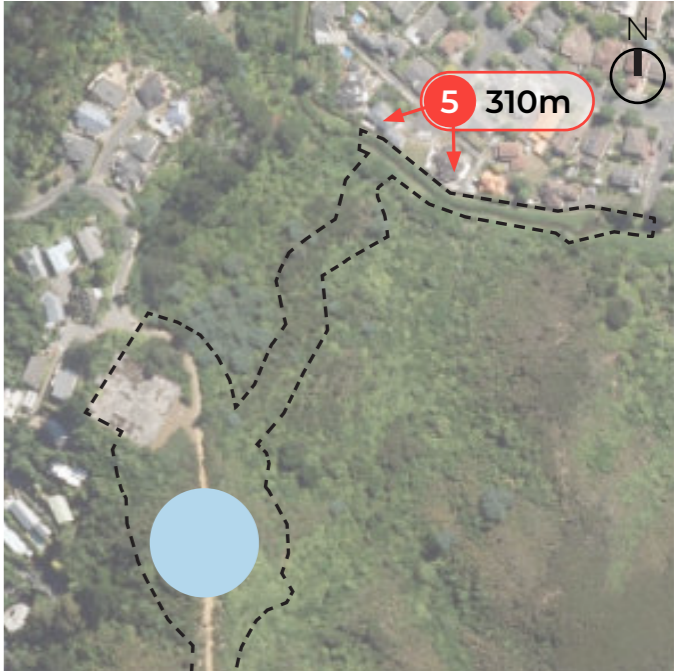
Camera: Photo taken using Canon Camera EOS 5D with 50mm





Approximate extents of proposal

- Key**
-  Photo/ Viewpoint Location
 -  Project Site
 -  Proposed Reservoir



Scale: NTS

VP 5: View from Balgownie Grove looking south-west towards the Proposed Site

Mitigation

Project Name: Eastern Hills Reservoir | Landscape and Visual Assessment

Date: 5-07-2024

Status: Issued to Wellington Water

Revision: 1

Sheet Number: LA018

Drawn By: Lawrence Elliott

Reviewed By: Wendy Hoddinott

Approved By: John Leatherbarrow

Photo Location: -41.205829, 174.942919

Photo Taken By: Wendy Hoddinott

Photo Date: 1:38 pm on 15th March 2023

Camera: Photo taken using Canon Camera EOS 5D with 50mm

