

Spatial Planning Briefing

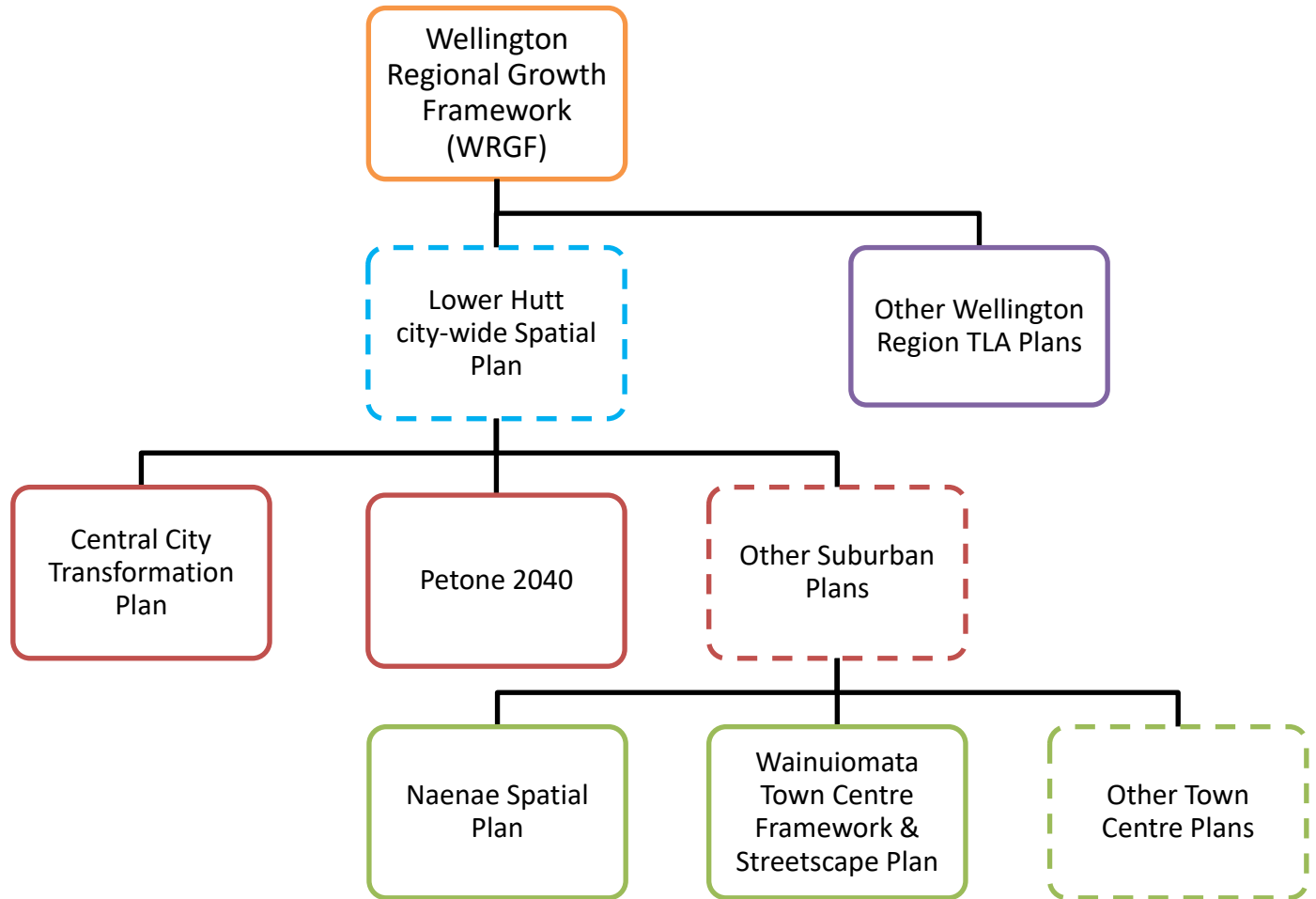
January 2021

Why we do Spatial Planning

Some of the important reasons include:

- Establish shared story outlining strategic direction for future economic and social growth and use of land and resources
- Identify opportunities for further development and leveraging investment with private and public sector
- Capture community benefits from growth and development
- Preserve and enhance important environmental, historic and cultural assets
- Understand potential risks and constraints
- Create pathway towards a thriving city

Spatial Plan Hierarchy



Central City Transformation Plan (CCTP)

Purpose of the project

- Provide framework to achieve the community's vision for the vibrant central city connected to the Hutt River (Te Awa Kairangi)
- Strengthen the case for infrastructure investment and private investment in central Lower Hutt
- Coordinate the design and development of the central city - important resource for district planning



Background

- Three decades of formal planning and community consultation
- CCTP updates Council's 2009 vision for central city - Making Places
- Completed in 2019
- Council working jointly with GWRC and NZTA on RiverLink



Where are we at?

- Progressing RiverLink project (the major initiative in CCTP)
 - Turning city blocks to face the river
 - Enabling development on the river edge
 - Resetting the movement patterns in the CBD
 - Construction to start in late 2022
- Aligning the CBD towards WRGF growth initiatives



Petone 2040

Purpose of the project

- Have an overarching shared strategy for the co-ordinated development and design of Petone and Moera
- Provide direction and guide for future work and private investment
- Petone/Moera growth story can be shared with GWRC, NZTA and other parties



Background

- Updating Petone Vision 2007
- Led by community based Petone 2040 Group, funded by Council
- Community and stakeholder consultation
- Petone Spatial Plan 2040 approved by Council and published in 2017



Where are we at?

- Jackson Street Streetscape Design (JSSD) endorsed in 2017
- Jackson Street Heritage Pilot Project completed in 2020
- CVL - Growth potential study at North Park Village enabled by CVL (TBD)
- Heritage & Character Overlays for District Plan (TBD)
- Possible implementation of JSSD (TBD)
- Implementation of other initiatives (TBD)



Naenae Spatial Plan (NSP)

Purpose of the project

- Bring to life the vision in the Voice of the Community Report
- Revitalise Naenae Town Centre and create a lively and functional space
- Provide a pathway for future development that meets community aspirations
- Inform location of and maximise benefits from investment in the pool and future facilities



Background

- Naenae Pool complex closed in April 2019
- Three month community engagement project
- Voice of the Community Report in 2019 - key priorities identified
- Crown funding of \$27M for Pool redevelopment to supplement Council funds
- Prior \$9M funding for community hub repurposed

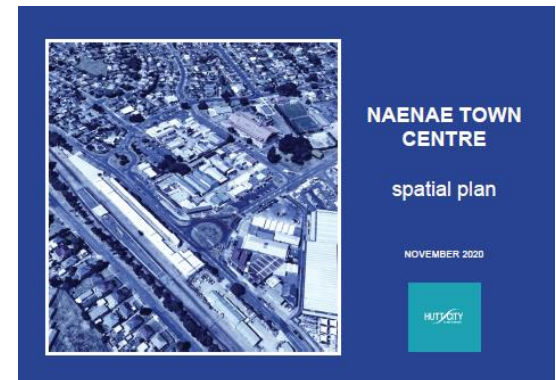


Where are we at?

- Naenae Spatial Plan endorsed by Council in December 2020
- Project management structure in place

Next steps:

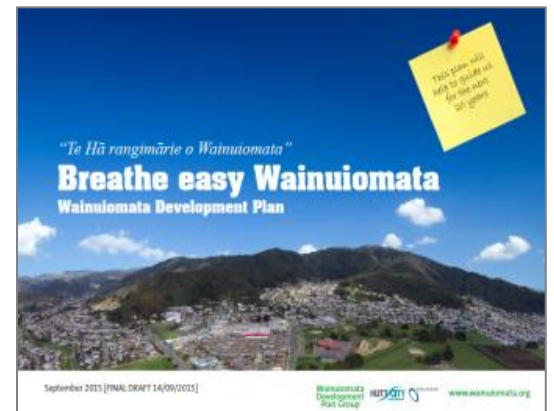
- Process underway to establish a community-led, officer facilitated advisory group to help progress spatial plan work, and contribute to other Council projects in Naenae
- Investigate, scope, cost and prioritise options against the \$9M allocation of Council funding for Spatial Plan projects



Wainuiomata Town Centre Framework and Streetscape Plan (WTCFSP)

Purpose of the project

- Advance elements of community aspirations from the Wainuiomata Development Plan (WDP)
- Develop Wainuiomata Town Centre as a vibrant, safe and attractive place
- Update Queen Street streetscape infrastructure
- Integrate ex-Wainuiomata Mall site with the Town Centre



Background

- Funding for the WDP approved by Council in 2014
- Extensive consultation with the community carried out 2014/15
- Community led - Love Wainuiomata incorporated in 2016
- Work on WTCFSP started in 2020
- Focus on Queen Street and its connection with surrounding areas



Where are we at?

- Project established and resourced
- Project management structure in place
- Discovery & analysis phase completed

Next steps

- Briefing to Council/Community Board on 24 February 2021
- Stakeholder/community engagement planned for March/April in conjunction with LTP



Challenges

- Integration with other Council work and policies
- Knowledge and support of plans within Council
- Funding in LTP and Annual Plan for identified initiatives
- Reporting back on progress

Going Forward

- Consult on WRGF along with LTP 2021-2031
- Development of city-wide spatial plan - starting Jan 2021
- Completion of Wainuiomata Town Centre Framework & Streetscape Plan concepts and consult
- Pause and put in place formal project processes and structures for developing future spatial plans