

Sign Approval Sites

No

No



RAILWAY BERMS: NOT APPROVED SITE (a)
CAMBRIDGE TERRACE AND POHUTUKAWA STREET
(Woburn Railway Station)

The council cannot guarantee the accuracy or completeness of the information and accepts no liability for any loss suffered as a result of reliance on it.

Aerial photography was flown between January and March 2021 by AAM NZ Limited for Hutt City Council and GWRC and provided under the Creative Commons Attribution 4.0 International License (CC BY 4.0).

This map is drawn on the New Zealand Transverse Mercator projection, using New Zealand Geodetic Datum 2000. Cadastral information sourced from Land Information New Zealand data.

Crown Copyright Reserved.

Scale: 1:1,500



18 July 2022

Plan 1



Sign Approval Sites

↔ No

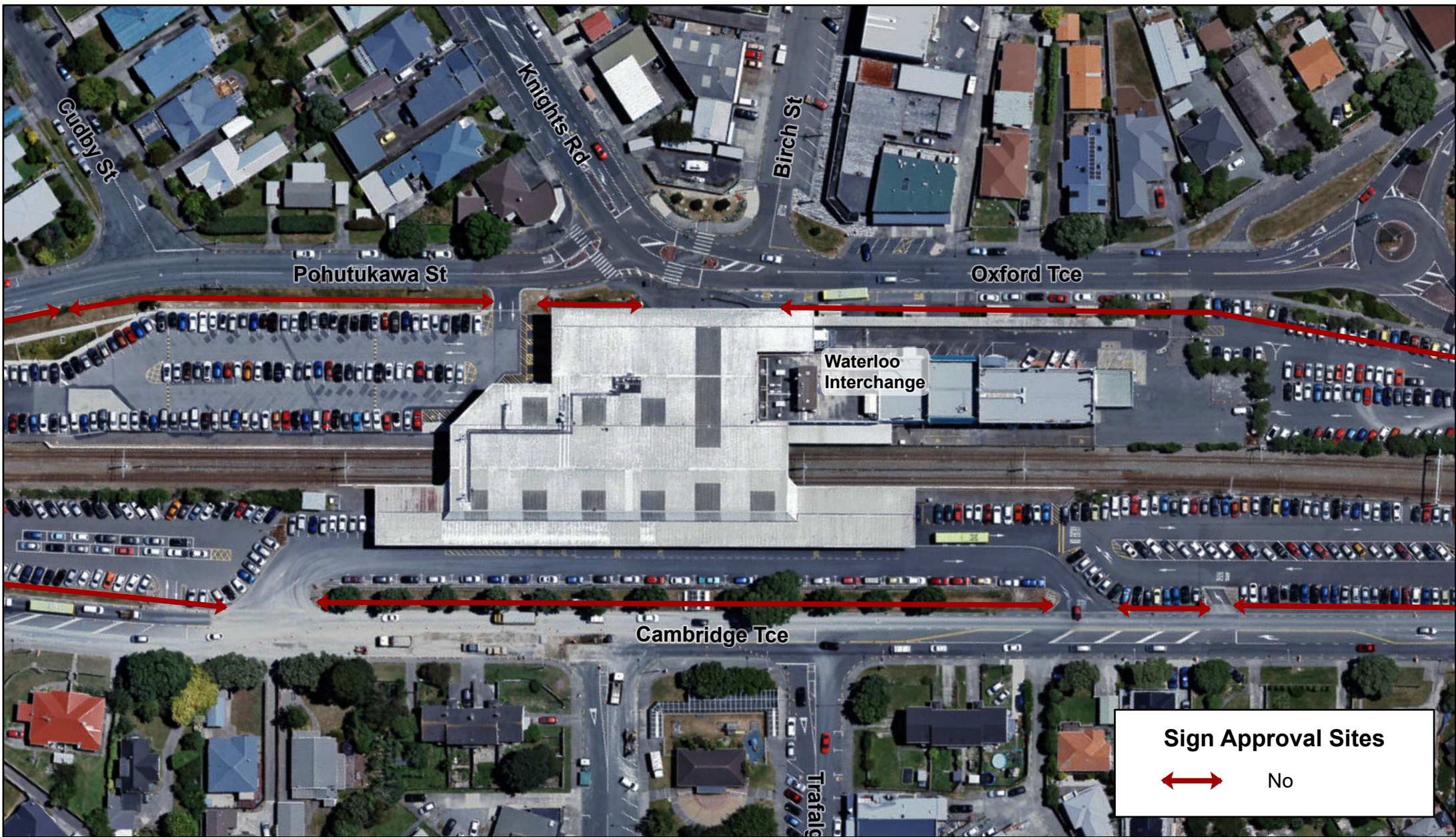




Sign Approval Sites

↔ No









Sign Approval Sites

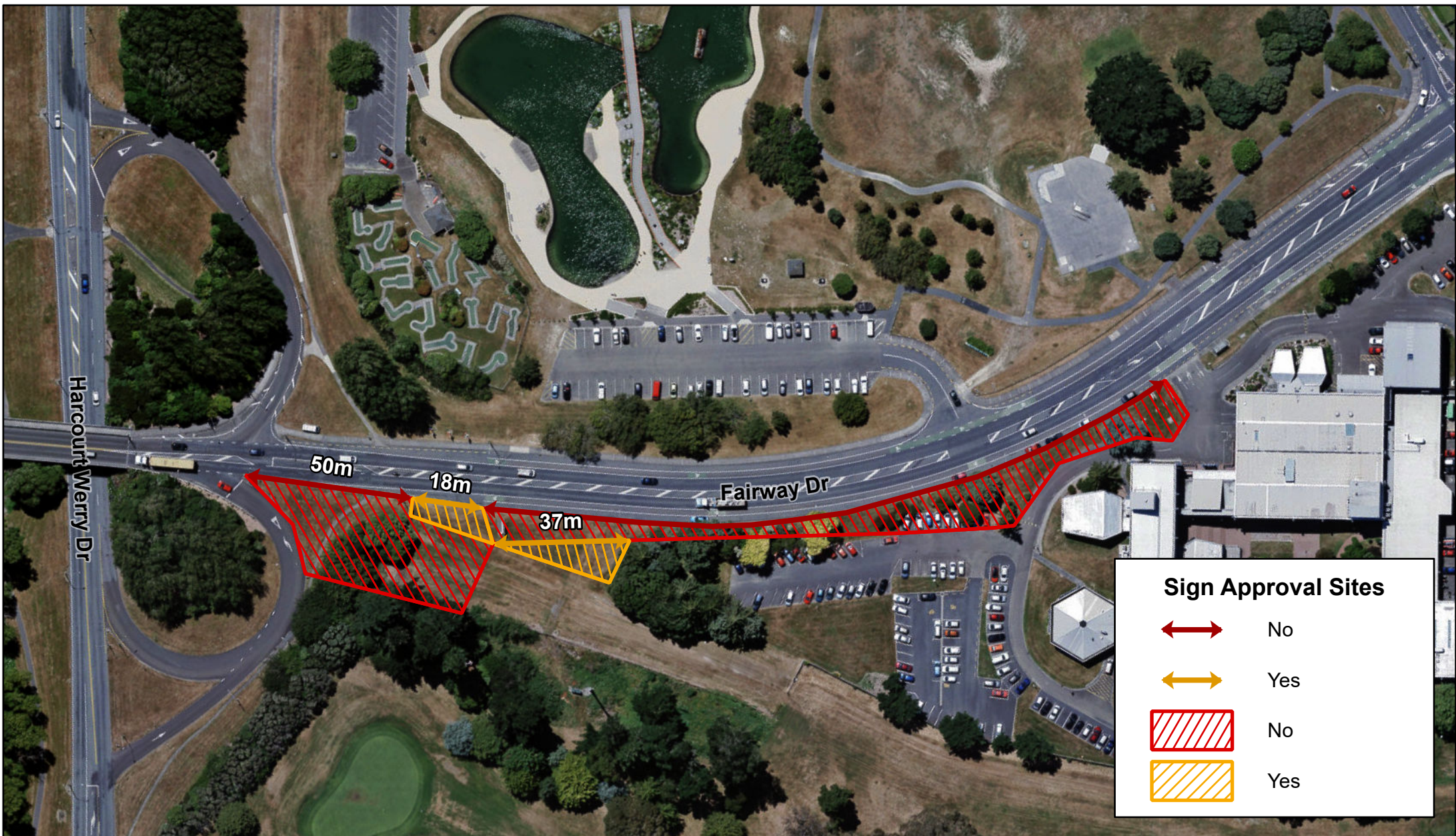
-  No
-  Yes

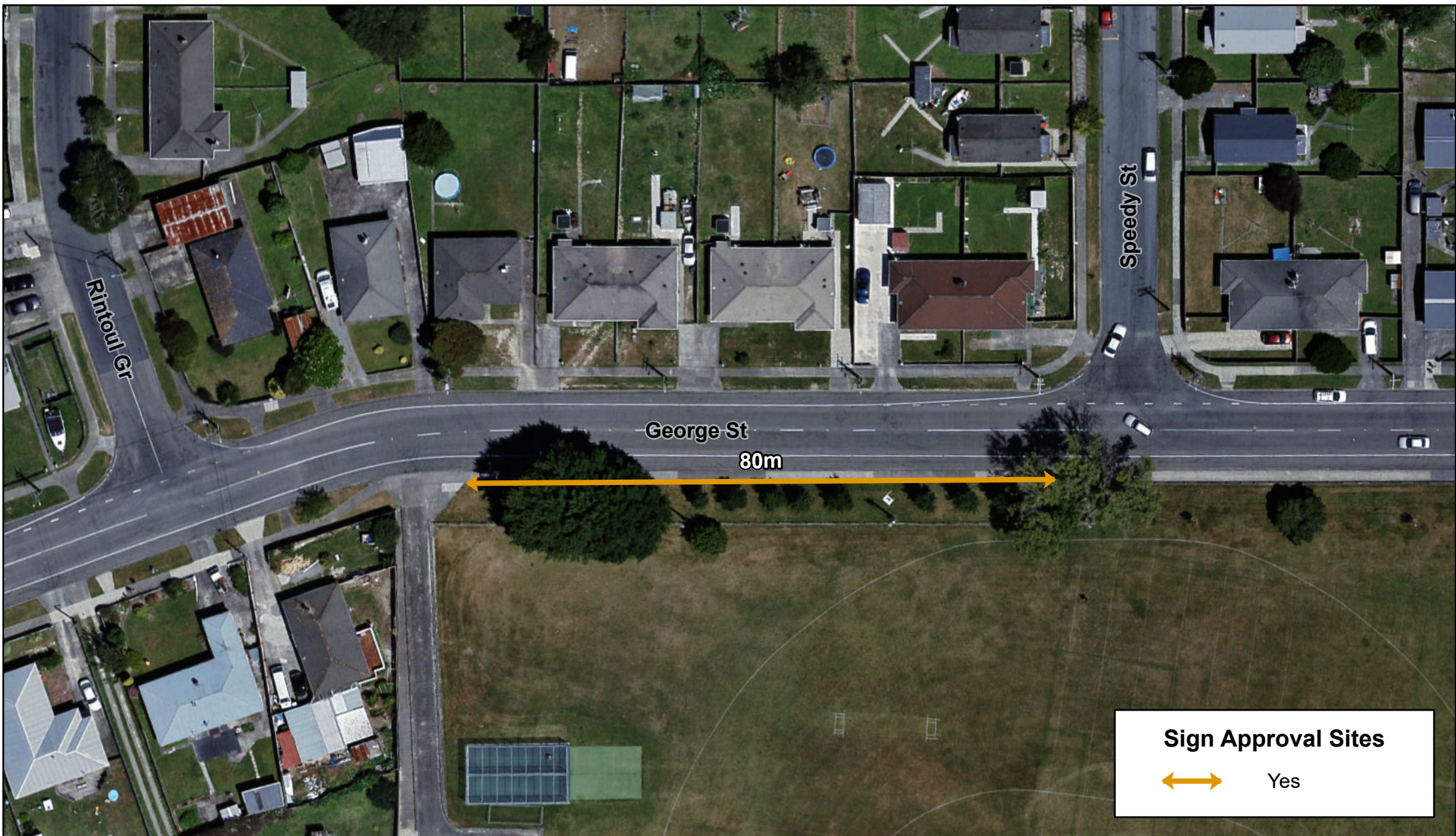
ELECTION HOARDING APPROVED SITE (b) DOWSE DRIVE (South side only as shown on plan)





ELECTION HOARDING APPROVED SITE (c)
DOWSE DRIVE
 (West side only as shown on plan)





Sign Approval Sites



Yes

ELECTION HOARDING APPROVED SITE (e) GEORGE STREET



The council cannot guarantee the accuracy or completeness of the information and accepts no liability for any loss suffered as a result of reliance on it.

Aerial photography was flown between January and March 2021 by AAM NZ Limited for Hutt City Council and GWRC and provided under the Creative Commons Attribution 4.0 International License (CC BY 4.0).

This map is drawn on the New Zealand Transverse Mercator projection, using New Zealand Geodetic Datum 2000. Cadastral information sourced from Land Information New Zealand data.

Crown Copyright Reserved.

Scale: 1:700





18 July 2022

Plan 9



Sign Approval Sites

-  No
 Yes

ELECTION HOARDING APPROVED SITE (f) HARBOUR VIEW ROAD



The council cannot guarantee the accuracy or completeness of the information and accepts no liability for any loss suffered as a result of reliance on it.

Aerial photography was flown between January and March 2021 by AAM NZ Limited for Hutt City Council and GWRC and provided under the Creative Commons Attribution 4.0 International License (CC BY 4.0).

This map is drawn on the New Zealand Transverse Mercator projection, using New Zealand Geodetic Datum 2000. Cadastral information sourced from Land Information New Zealand data.

Crown Copyright Reserved.

Scale: 1:900



18 July 2022

Plan 10



Sign Approval Sites



No



Yes

ELECTION HOARDING APPROVED SITE (g)
HIGH STREET
(Railway Berms)



The council cannot guarantee the accuracy or completeness of the information and accepts no liability for any loss suffered as a result of reliance on it.

Aerial photography was flown between January and March 2021 by AAM NZ Limited for Hutt City Council and GWRC and provided under the Creative Commons Attribution 4.0 International License (CC BY 4.0).

This map is drawn on the New Zealand Transverse Mercator projection, using New Zealand Geodetic Datum 2000. Cadastral information sourced from Land Information New Zealand data.

Crown Copyright Reserved.

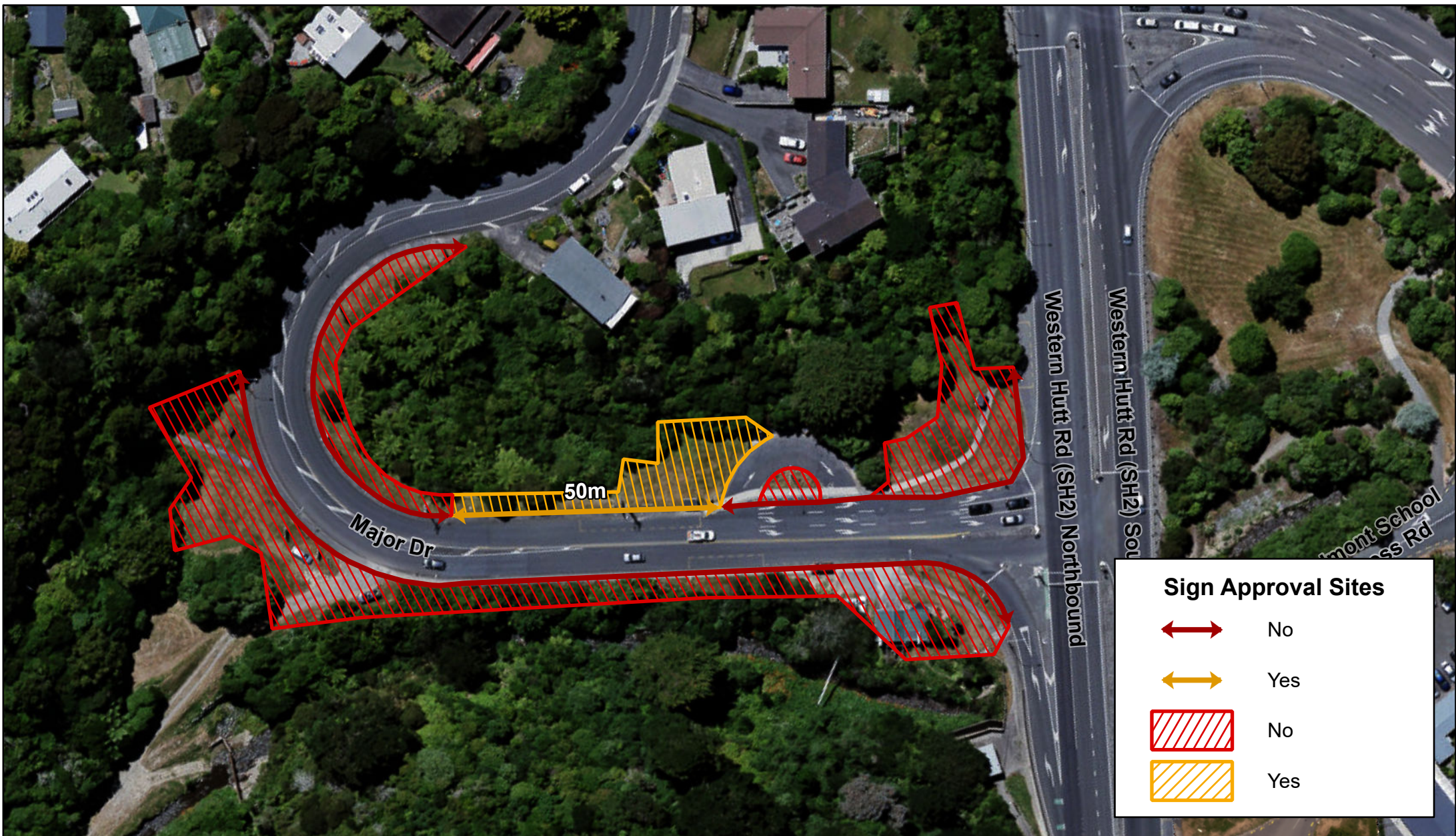
Scale: 1:1,900

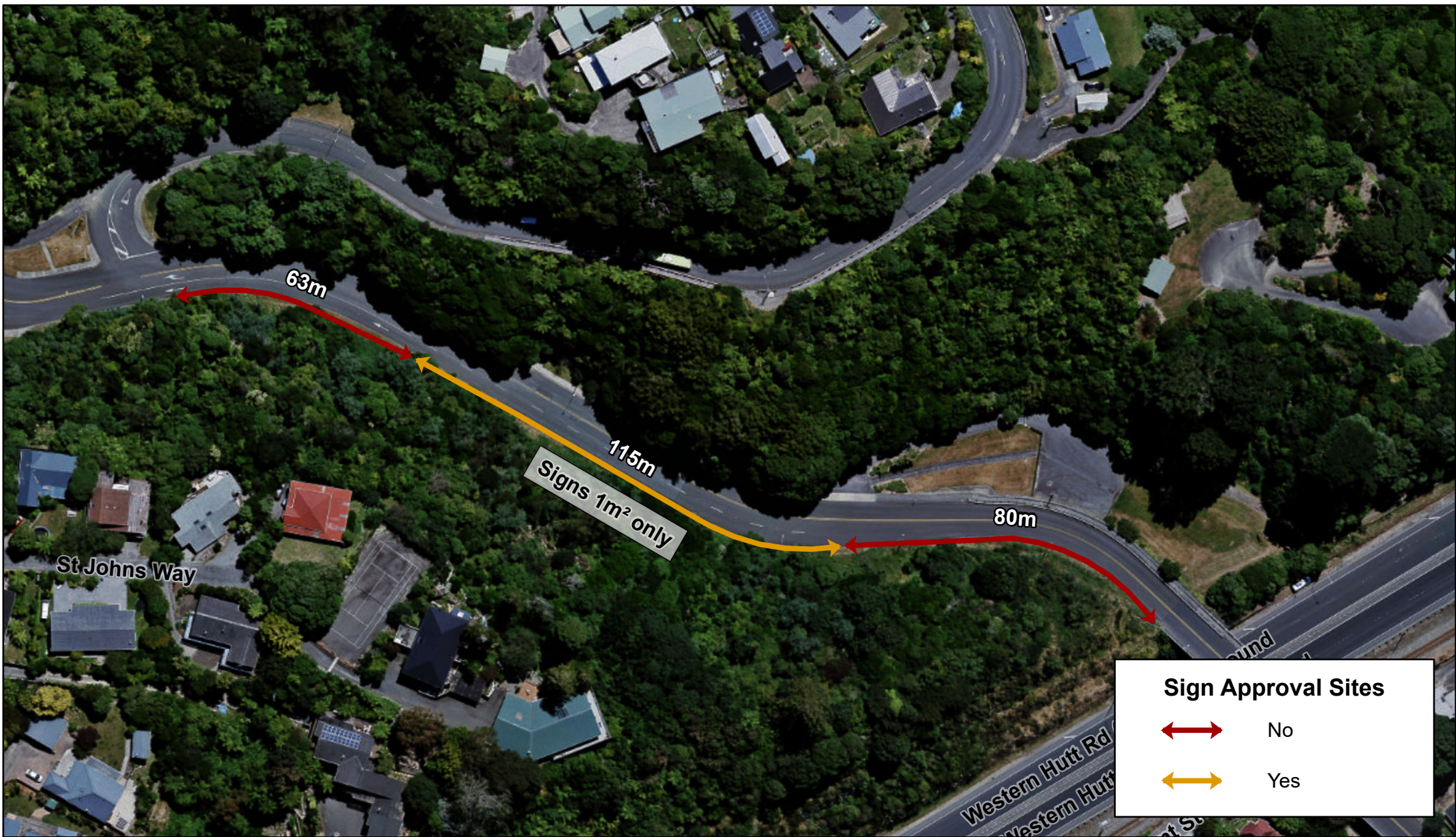


18 July 2022

Plan 11







Sign Approval Sites

-  No
-  Yes

ELECTION HOARDING APPROVED SITE (i) NORMANDALE ROAD



The council cannot guarantee the accuracy or completeness of the information and accepts no liability for any loss suffered as a result of reliance on it.

Aerial photography was flown between January and March 2021 by AAM NZ Limited for Hutt City Council and GWRC and provided under the Creative Commons Attribution 4.0 International License (CC BY 4.0).

This map is drawn on the New Zealand Transverse Mercator projection, using New Zealand Geodetic Datum 2000. Cadastral information sourced from Land Information New Zealand data.

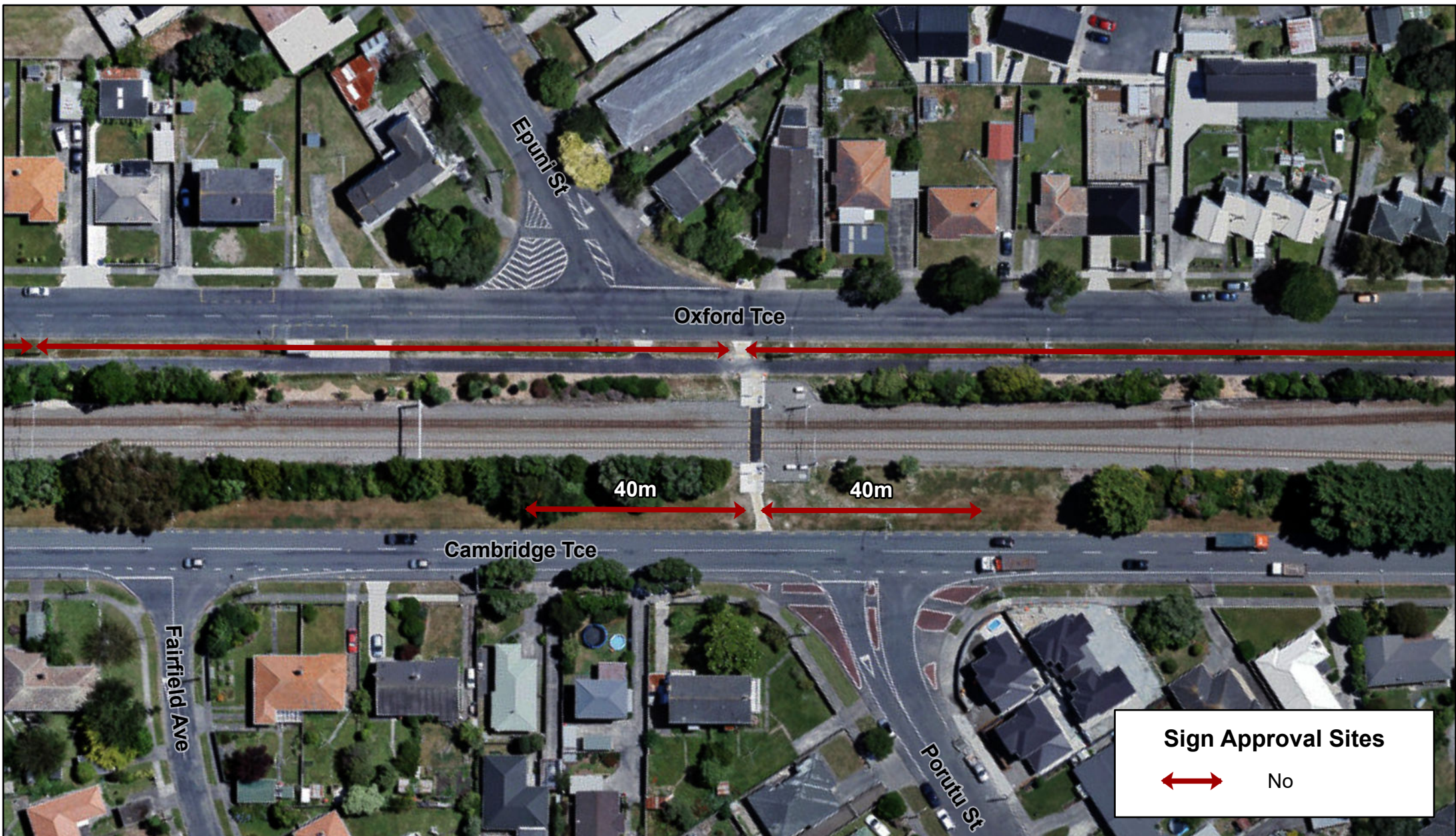
Crown Copyright Reserved.

Scale: 1:1,200



18 July 2022

Plan 13



RAILWAY BERMS: NON APPROVED SITE (j)
CAMBRIDGE TERRACE AND OXFORD TERRACE
(Opposite Porutu Street and Epuni Street)

The council cannot guarantee the accuracy or completeness of the information and accepts no liability for any loss suffered as a result of reliance on it.

Aerial photography was flown between January and March 2021 by AAM NZ Limited for Hutt City Council and GWRC and provided under the Creative Commons Attribution 4.0 International License (CC BY 4.0).

This map is drawn on the New Zealand Transverse Mercator projection, using New Zealand Geodetic Datum 2000. Cadastral information sourced from Land Information New Zealand data.

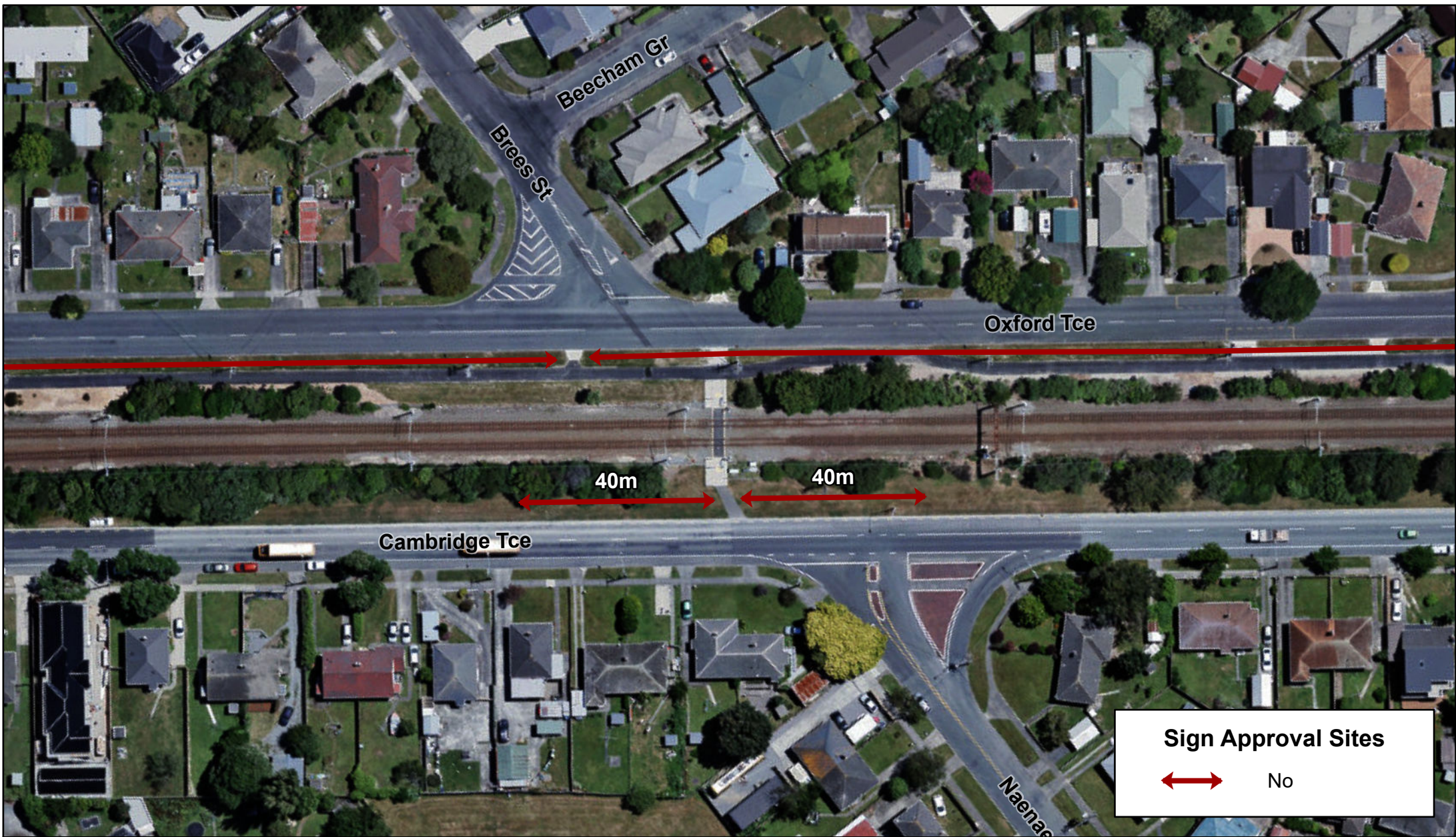
Crown Copyright Reserved.

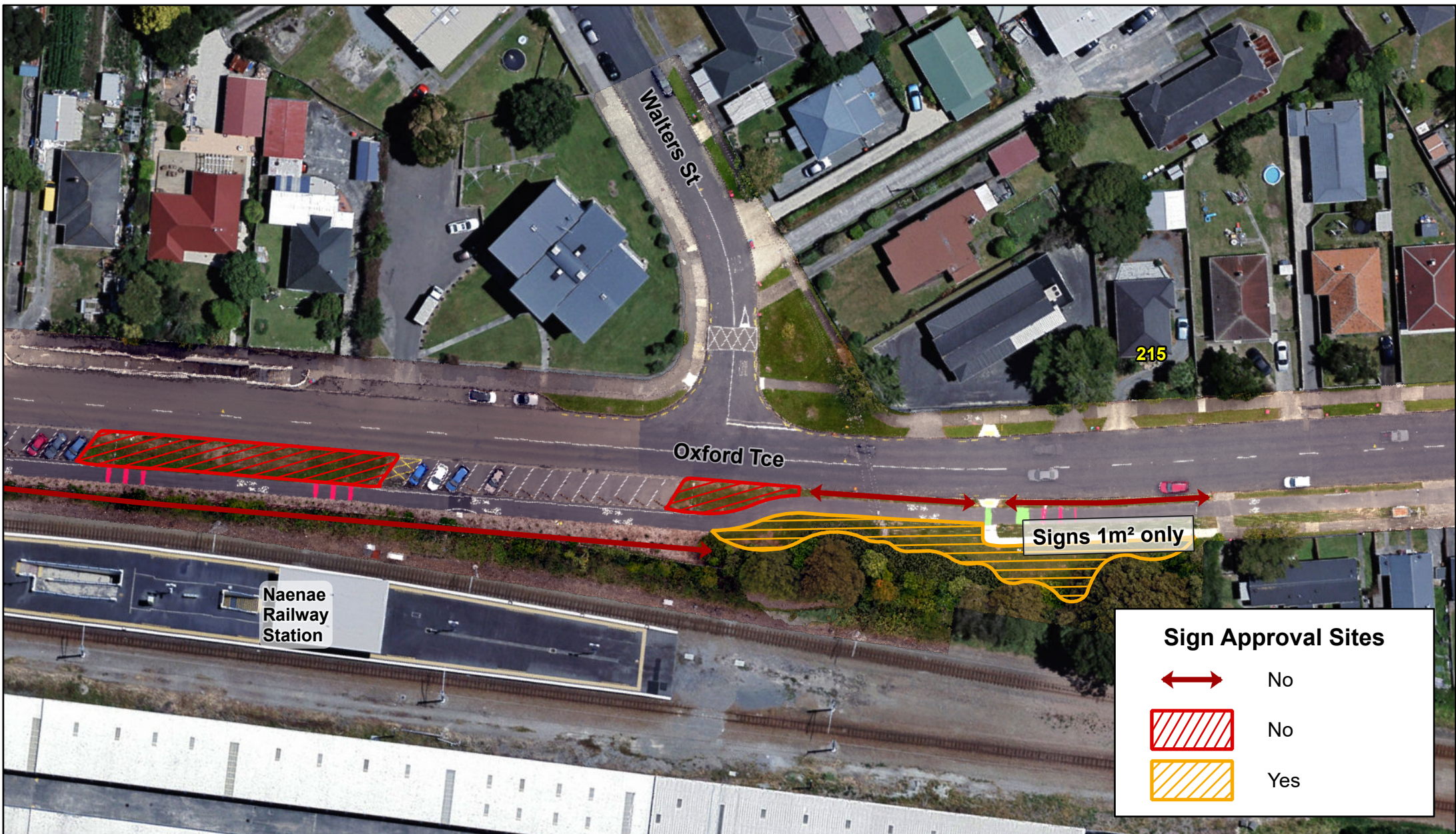
Scale: 1:900






18 July 2022

Plan 14





Sign Approval Sites

-  No
-  No
-  Yes



ELECTION HOARDING APPROVED SITE (k)

PARKSIDE ROAD

The council cannot guarantee the accuracy or completeness of the information and accepts no liability for any loss suffered as a result of reliance on it.

Aerial photography was flown between January and March 2021 by AAM NZ Limited for Hutt City Council and GWRC and provided under the Creative Commons Attribution 4.0 International License (CC BY 4.0).

This map is drawn on the New Zealand Transverse Mercator projection, using New Zealand Geodetic Datum 2000. Cadastral information sourced from Land Information New Zealand data.

Crown Copyright Reserved.

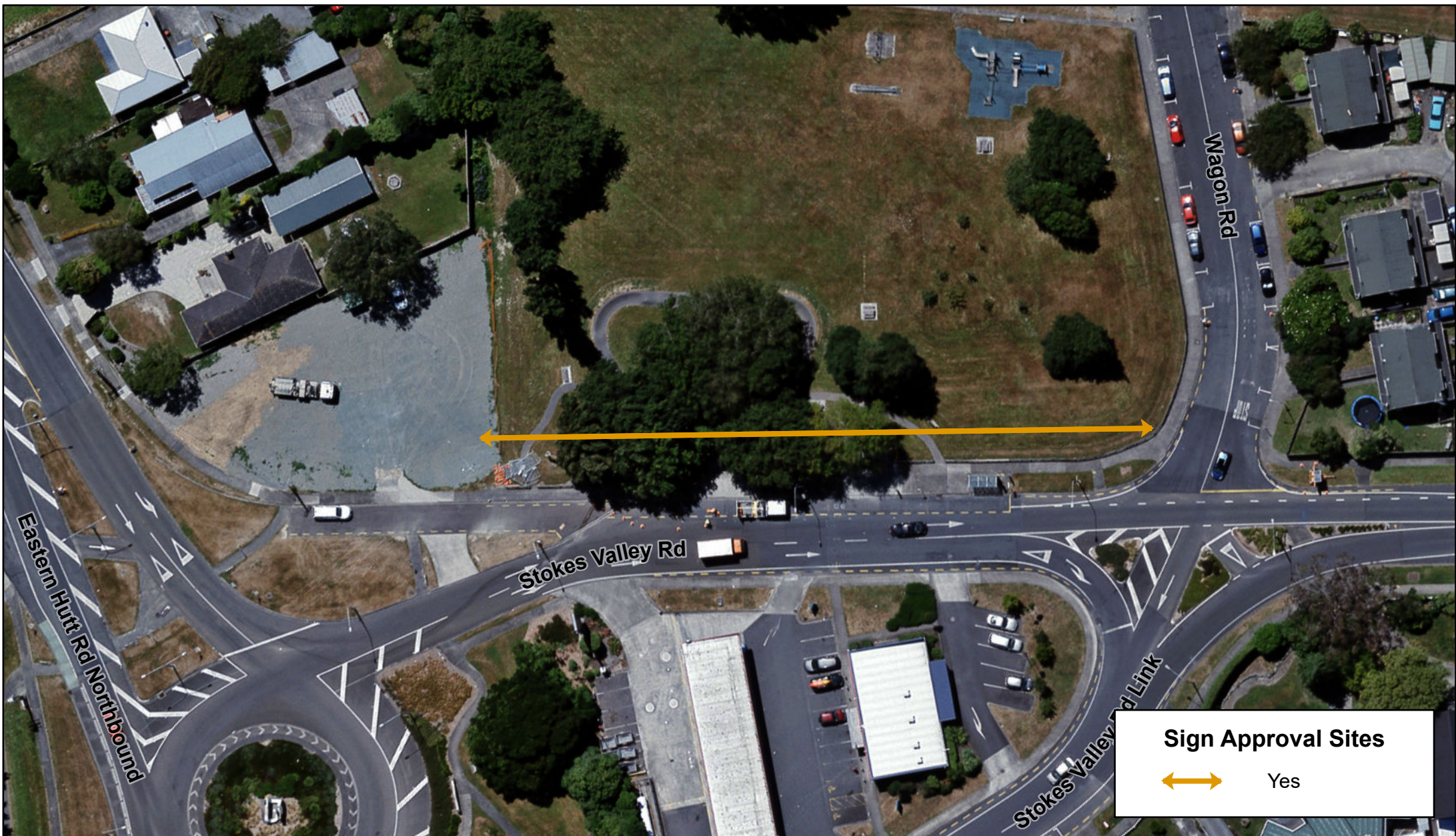
Scale: 1:1,900



18 July 2022

Plan 15





Sign Approval Sites



Yes

ELECTION HOARDING APPROVED SITE (n) STOKES VALLEY ROAD



The council cannot guarantee the accuracy or completeness of the information and accepts no liability for any loss suffered as a result of reliance on it.

Aerial photography was flown between January and March 2021 by AAM NZ Limited for Hutt City Council and GWRC and provided under the Creative Commons Attribution 4.0 International License (CC BY 4.0).

This map is drawn on the New Zealand Transverse Mercator projection, using New Zealand Geodetic Datum 2000. Cadastral information sourced from Land Information New Zealand data.

Crown Copyright Reserved.

Scale: 1:700

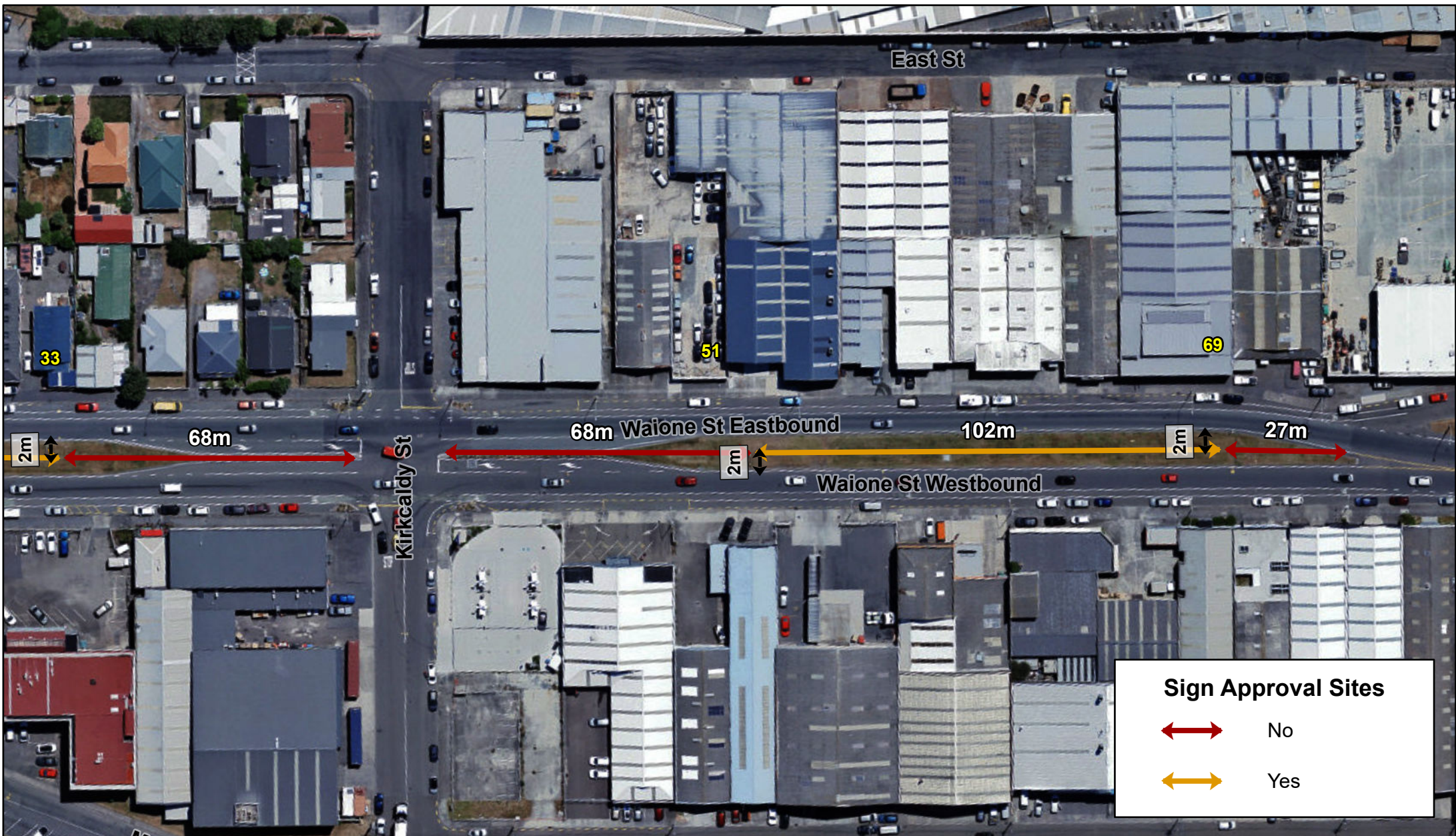


18 July 2022

Plan 17











Plan 22



Sign Approval Sites



No



Yes

ELECTION HOARDING APPROVED SITE (s) HIGH STREET TO OXFORD TERRACE



The council cannot guarantee the accuracy or completeness of the information and accepts no liability for any loss suffered as a result of reliance on it.

Aerial photography was flown between January and March 2021 by AAM NZ Limited for Hutt City Council and GWRC and provided under the Creative Commons Attribution 4.0 International License (CC BY 4.0).

This map is drawn on the New Zealand Transverse Mercator projection, using New Zealand Geodetic Datum 2000. Cadastral information sourced from Land Information New Zealand data.

Crown Copyright Reserved.

Scale: 1:1,200



18 July 2022

Plan 23