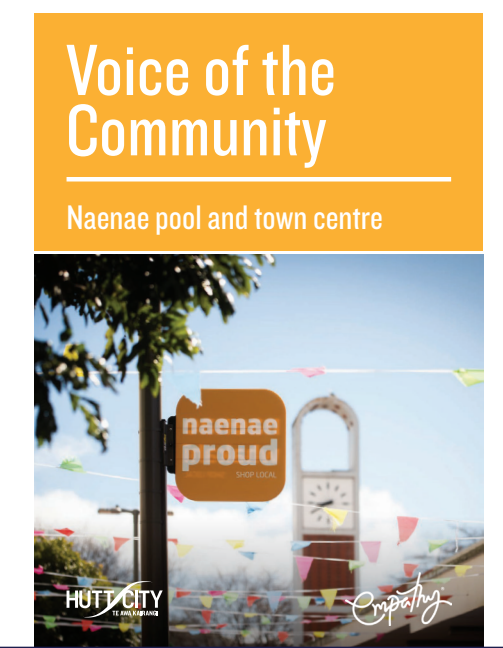


Walter Mildenhall Park COMMUNITY DESIGN



VOICE OF THE COMMUNITY



CULTURAL NARRATIVE FOR NAENAE



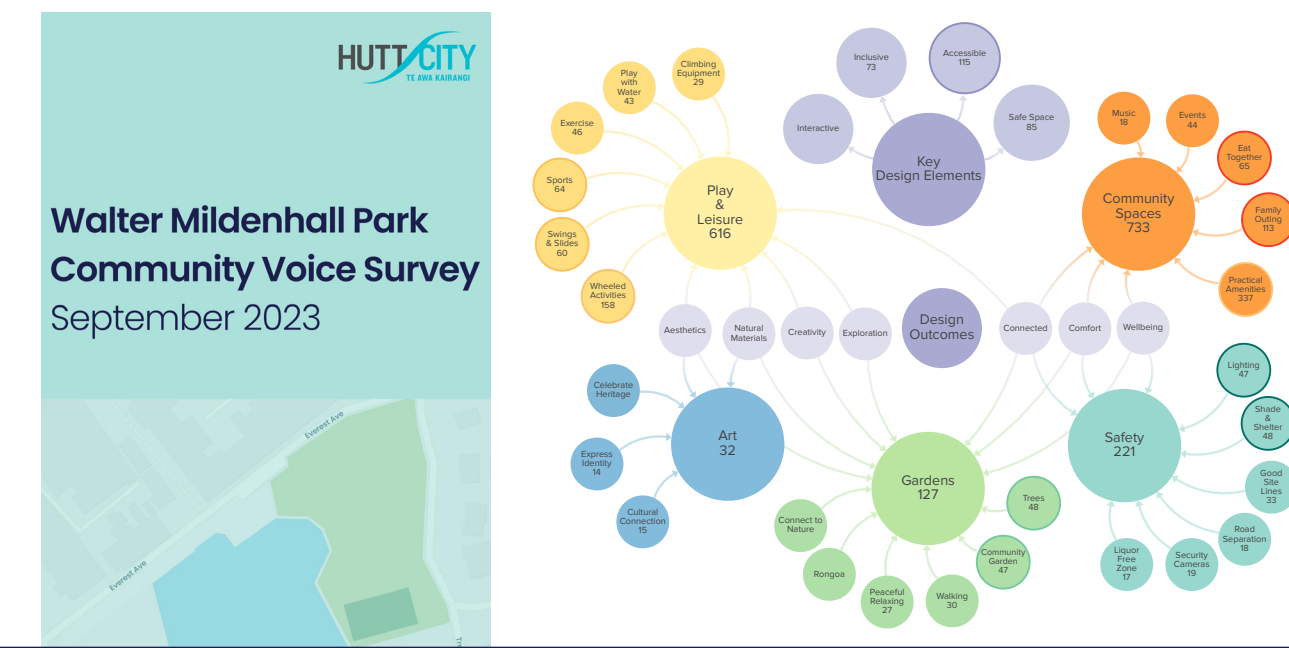
KĀHUI MANA WHENUA DESIGN PRINCIPLES



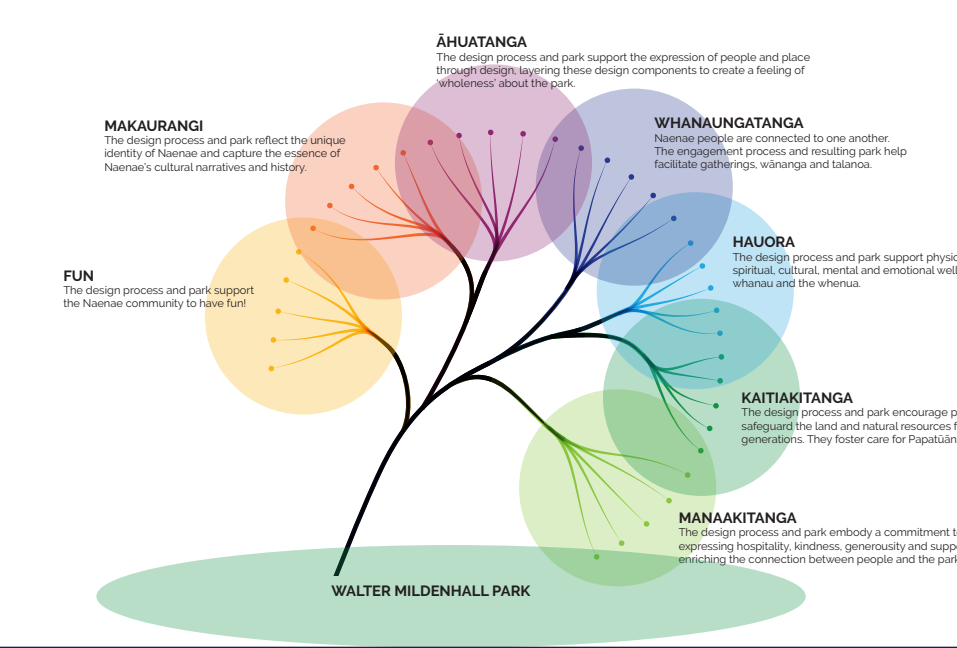
SITE ANALYSIS



WMP COMMUNITY SURVEY



PROJECT VALUES
Engagement methods workshop



2019

2023

2024

PROJECT WHAKAPAPA



WHAT IS MOST IMPORTANT TO YOU AND YOUR WHĀNAU?

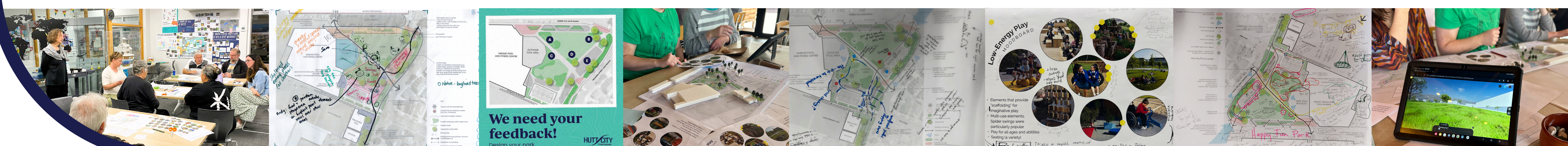
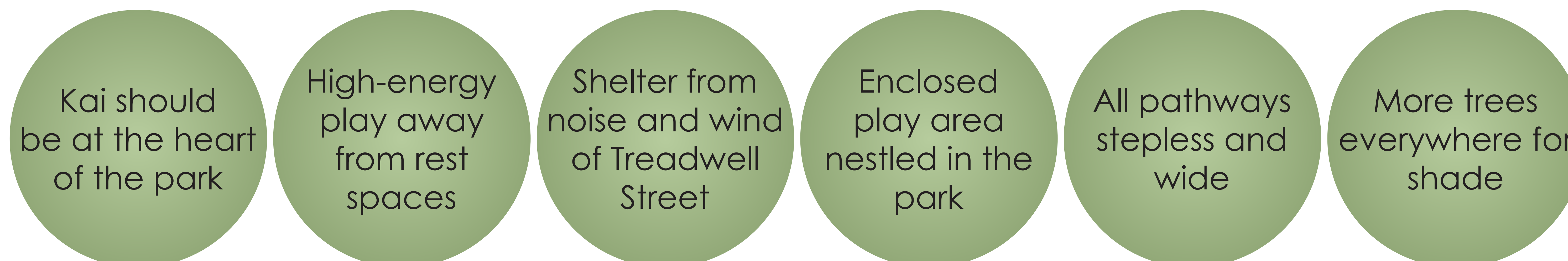
WHY?



FEB - MARCH 2024

WHERE SHOULD THINGS GO IN THE PARK?

WHY?



APRIL - MAY 2024



HOW THE NAENAE COMMUNITY HAS SHAPED THE PROPOSED DESIGN

WAITING SPACES

Near the pool entrance, and across the road from takeaway shops, community discussed this edge as a natural waiting space and transition space into the park.

ACCESSIBLE PATHWAYS

Stepless pathways that can be comfortably shared by wheelchairs, prams and scooters were desired. Consequently, the Principal path is 3m wide and the Garden path is 1.8m wide.

SEATING AS PLAY

For rangatahi (teenagers), 'play' also translates to hanging out with friends in group seating. A body of research into public spaces for teenage girls indicates that getting up higher feels safer, amongst other design recommendations.

ENCLOSED PLAY AREA

A small, fenced area is very much desired from whānau with special needs kids. This location was preferred by caregivers of 'runner' kids due to it being furthest away from the road.

IMAGINATIVE PLAY

Community desired play elements that encouraged tamariki to connect with nature and use their imagination.

WHEELED ACTIVITIES

Low-to-ground, beginner skate opportunities were important to tamariki and rangatahi wāhine so they could try it out with low risk. More difficult skate features were desired by tamariki and rangatahi who wanted to keep improving. Advanced skaters acknowledged that other parks provide good facilities nearby.

Across all demographics, community members desired an open space to kick a ball around or hold an event. Simultaneously, everybody desired more trees for more shade.

TRANSITION FROM BUSY CORNER INTO PEACEFUL PARK

Across all demographics, community members desired increased shade from the sun and shelter from wind and noise. This planted corner provides shelter from the prevailing wind and busiest intersection, providing peaceful nooks.

PLANTED EDGE

Concerns were raised about the noise and traffic dangers associated with Treadwell Street. Planting provides a soft barrier and shelter.

SHELTERED KAI PREP AREA

Community were engaged heavily about kai facilities and location. This location was preferred due to its centrality and connection, making it the heart of the park.

VARIOUS FORMS OF SEATING

A variety of seating is desired, including a low platform to sit and share food with a large group. Other desired features included in seating around the park are picnic tables and seating with backrests and armrests.

BASKET SWING

A crowd favourite! Basket swings were popular for multiple groups for multiple reasons. They provide gentle swinging for low-energy play with friends and whānau as well as fast and high swinging for high-energy, risky play.

FITNESS & PLAY

Calisthenics spot that is also a climbable feature (monkey bars) with a variety of risk and ability was popular with older tamariki (for testing ability and getting high up) and adults (for exercise).



MID 2024

LATE 2024 MID 2025

'ORGANICALLY NAENAE' IN THE DETAILS ENGAGEMENT

- Opening of Te Mako 29th June
- Art & identity piece with rangatahi

CONSTRUCTION BEGINS
PARK COMPLETED!

NGĀ MIHI TO EVERYONE WHO HAS CONTRIBUTED TO THE DESIGN:

- Everybody who has responded to the exhibition in the library
- Tamariki and caregivers at the Super Save Easter Egg Hunt
- English Language School
- People at Oranga Festival
- Rangatahi at Te Wao
- Te Ngākau Kahukura o Te Awakairangi
- Kōkiri Marae Naenae Hub
- Pacific Health
- Ageing Well group at Wesley Rata Village
- Wheels and Canes group at Wesley Rata Village
- Everybody who responded to the online survey
- Naenae Community Advisory Group

JUNE 2024