



# Wainuiomata Town Centre Framework and Streetscape Plan

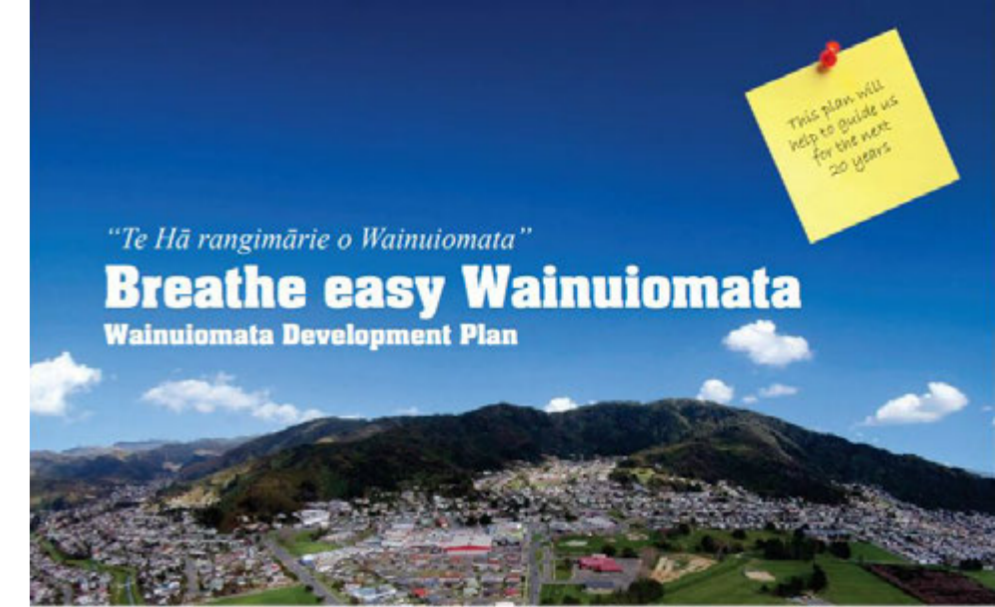


McIndoe Urban local



# Purpose of the Project

- **Advance** elements of community aspirations from the Wainuiomata Development Plan
- **Develop** Wainuiomata Town Centre as a vibrant, safe and attractive place
- **Update** Queen Street streetscape infrastructure
- **Integrate** ex-Wainuiomata Mall site with the Town Centre



# Background

- **Funding** for the WDP approved by Council in 2014
- **Extensive consultation** with the community carried out 2014/15
- **Community led** - Love Wainuiomata incorporated in 2016
- **Work on WTCFSP** started in late 2020
- **Focus on Queen Street** and its connection with surrounding areas





# Where are we at?

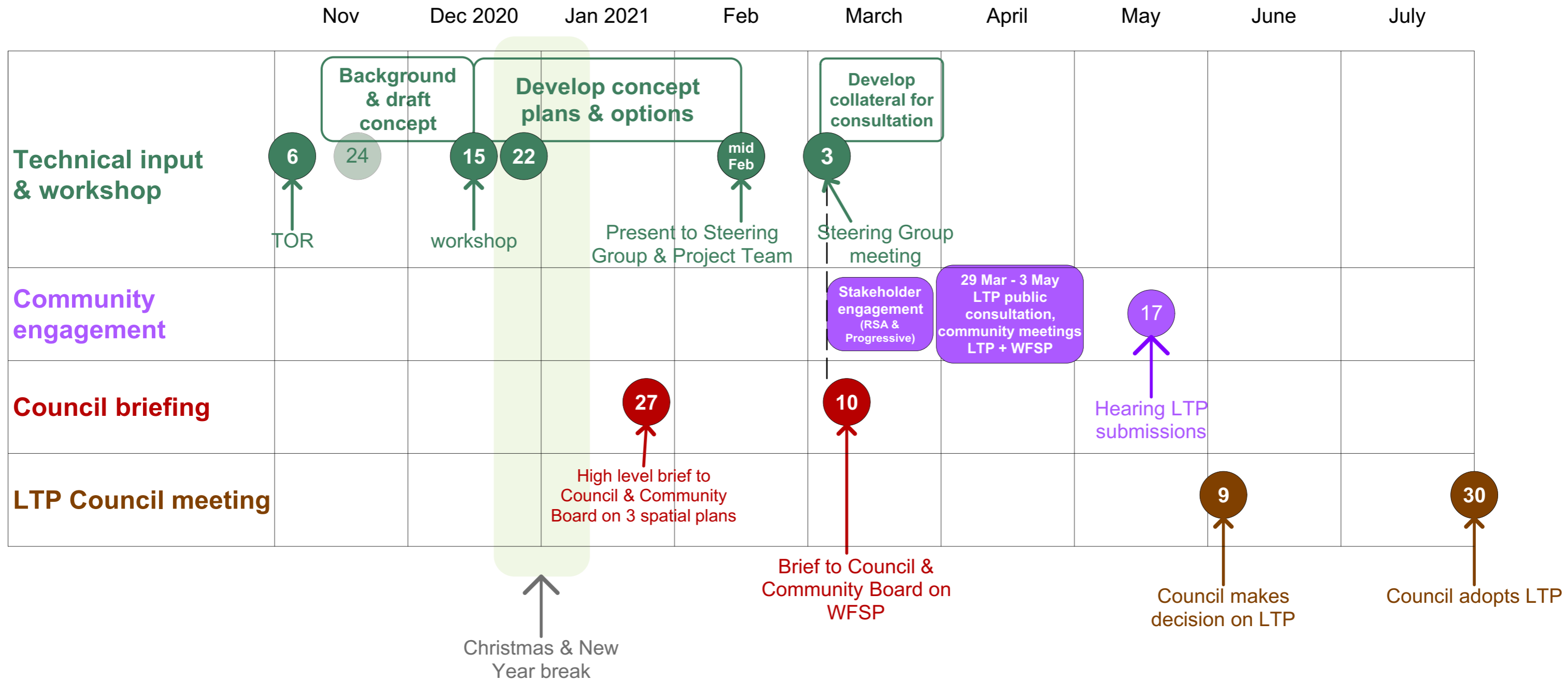
- **Project established** and resourced
- **Project management** structure in place
- **Discovery & analysis, Options** phases completed

## Next steps

- **Briefing to Council/Community Board** on 10 March 2021
- **Stakeholder/community engagement** planned for March/April in conjunction with LTP



# Discovery & Analysis

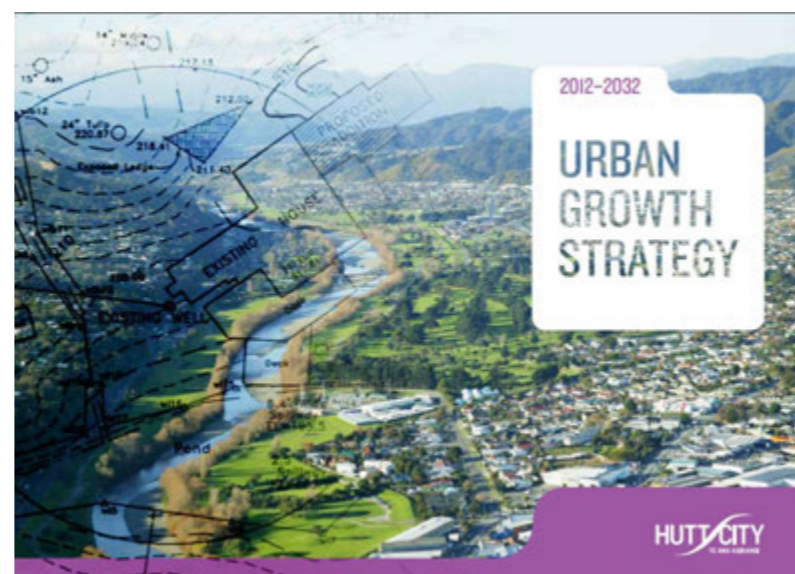
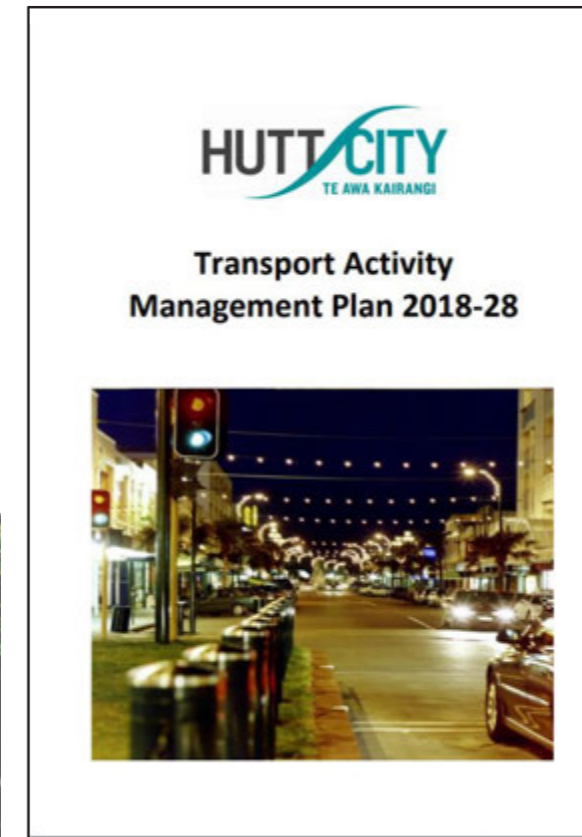
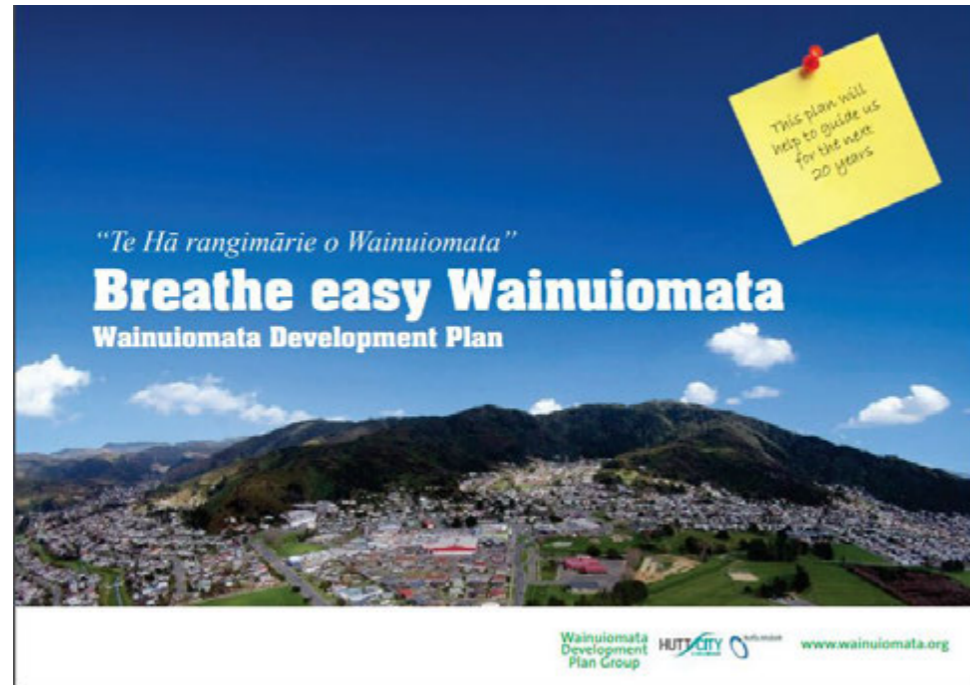








# Plans & Strategies - Project Context





# Plans & Strategies - Project Context

Key Issues		Breathe Easy Wainuiomata	Integrated Vision	Urban Growth Strategy	Transport Activity Management Plan	Review of Reserves	Leisure & Wellbeing Strategy	Environmental Sustainability Strategy	Design Response
<b>Connections</b>	Walking/cycling infrastructure Waterways as trails Valley floor to hills Improved Fernlea access	✓		✓	✓	✓	✓	✓	<i>Queen Street/Strand connection Civic hub/FW Park connection Waterways as trails Walking links to Fernlea</i>
<b>Heart of Wainui</b>	Integrated hub Easy to find Range of activities Pedestrian orientation	✓	✓	✓		✓	✓		<i>Green heart/more street trees Greater visibility Queen Street reserve marker Better pedestrian-vehicle balance</i>
<b>Big Back Yard</b>	“Gateway to wilderness” Remote visitor destinations River/wetland access Eco business	✓	✓			✓	✓	✓	<i>Valley floor to ridge trails Habitat restoration along streams Greater visibility Marae eco-hub</i>
<b>Community Feeling</b>	Bottom-up interventions Local story telling Inclusive meeting place Safe high-quality public space	✓	✓			✓	✓		<i>Cultural narratives Public art/heritage trails/play space Activation including young and old Improved planting/lighting/signage</i>
<b>Heart and Home</b>	Medium density housing Retirement villages Access to amenities Affordability & choice	✓	✓	✓			✓		<i>Town centre as community hub More emphasis on public space Conversion of commercial areas Low-rise apartments?</i>



# Plans & Strategies - Project Context

Issues		Breathe Easy Wainuiomata	Integrated Vision	Urban Growth Strategy	Transport Activity Management Plan	Review of Reserves	Leisure & Wellbeing Strategy	Environmental Sustainability Strategy	Design Response
<b>Connections</b>	Walking/cycling infrastructure Waterways as trails Valley floor to hills Improved Fernlea access	✓		✓	✓	✓	✓	✓	Queen Street Civic hub/Fernlea Waterways as trails Walking links to Fernlea
<b>Heart of Wainui</b>	Integrated hub Easy to find Range of activities Pedestrian orientated	✓	✓	✓		✓	✓		Green heart/more street trees Greater visibility Queen Street reserve marker Better pedestrian-vehicle balance
<b>Big Back Yard</b>	"Gateway to wilderness" Remote visitor destinations River/wetland access Eco business	✓	✓			✓	✓	✓	Valley floor to hills Heritage trail restoration Greater visibility Marae eco-hub
<b>Community Feeling</b>	Bottom-up interventions Local story telling Inclusive meeting place Safe high-quality public space	✓	✓			✓			Cultural narratives Public art/heritage trails/play space Activation including young and old Improved planting/lighting/signage
<b>Heart and Home</b>	Medium density housing Retirement villages Access to amenities Affordability	✓	✓	✓					Town centre as community hub More emphasis on public space Conversion of commercial areas Low-rise apartments?

Walking/cycling

Waterways as trails

Easy to find

Remote visitor destinations

Marae eco hub

Reserve Marker

Local stories

Heritage trails

Medium density

Emphasis on public space



# Guiding Principles

## Focusing Community

- Making a civic heart
- Attracting diversity
- Providing reasons to linger

## Creating Connections

- Improving access
- Raising visibility
- Integrating different components

## Activating Streets and Spaces

- Improving existing frontages
- Introducing new street-facing accommodation
- Hosting a programme of events

## Celebrating Identity

- Telling local stories
- Providing venues for performances and installations
- Acknowledging the town centre's origins

## Engaging the Natural Environment

- Greening the town centre
- Connecting with waterways and off-road trails
- Showcasing conservation and recreation opportunities

## Building a Legacy

- Investing in high-quality materials
- Favouring simplicity, flexibility and resilience
- Looking for synergy among projects

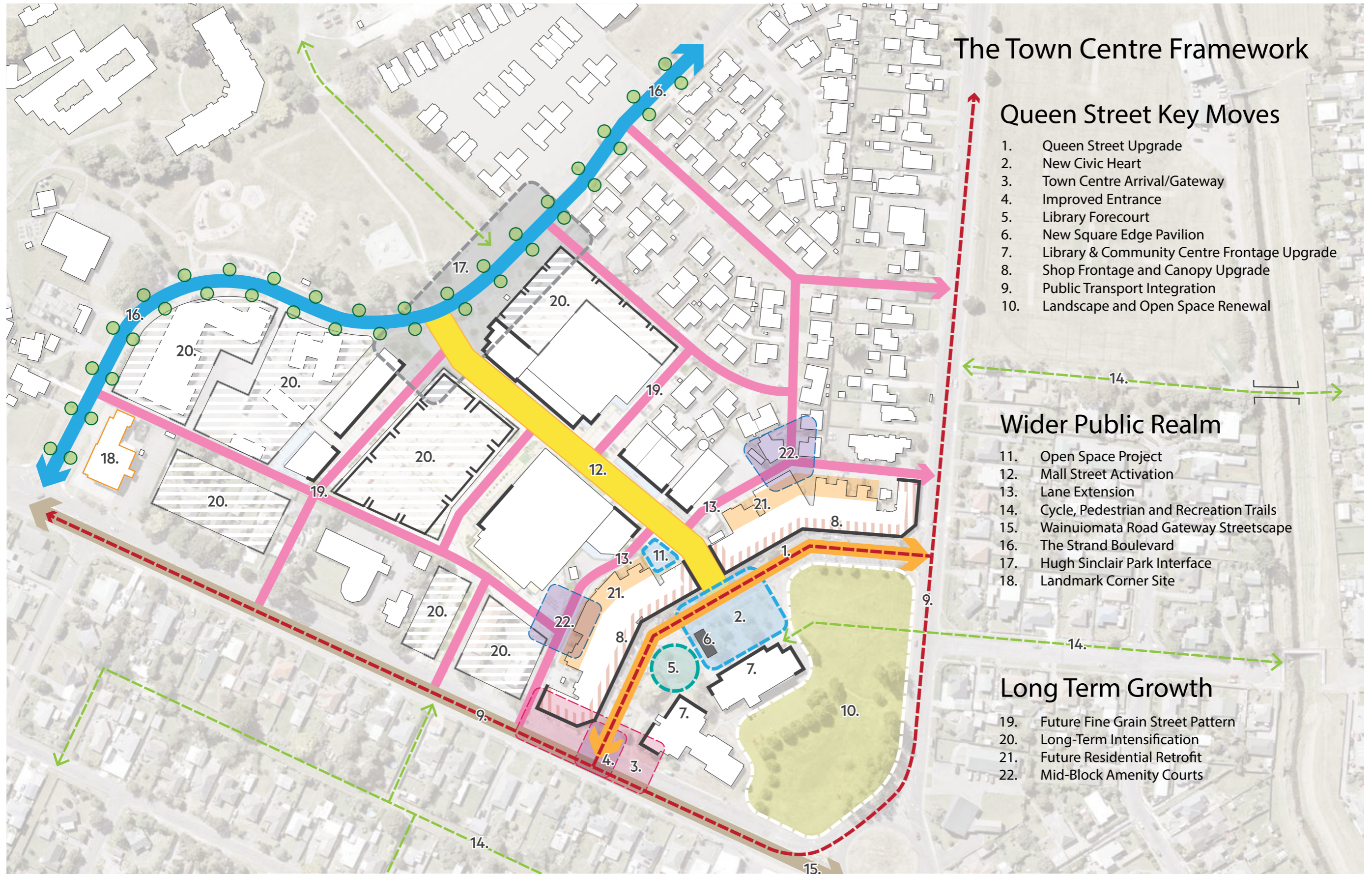
## Anticipating Growth

- Future-proofing for different transport options
- Planning for smaller blocks
- Encouraging intensification





# Town Centre Framework



## The Town Centre Framework

### Queen Street Key Moves

1. Queen Street Upgrade
2. New Civic Heart
3. Town Centre Arrival/Gateway
4. Improved Entrance
5. Library Forecourt
6. New Square Edge Pavilion
7. Library & Community Centre Frontage Upgrade
8. Shop Frontage and Canopy Upgrade
9. Public Transport Integration
10. Landscape and Open Space Renewal

### Wider Public Realm

11. Open Space Project
12. Mall Street Activation
13. Lane Extension
14. Cycle, Pedestrian and Recreation Trails
15. Wainuiomata Road Gateway Streetscape
16. The Strand Boulevard
17. Hugh Sinclair Park Interface
18. Landmark Corner Site

### Long Term Growth

19. Future Fine Grain Street Pattern
20. Long-Term Intensification
21. Future Residential Retrofit
22. Mid-Block Amenity Courts



# Queen Street Area

## Key Moves & Options

