

Whaowhia te pae tawhiti

Help us take the next steps

Communications & Engagement Update

Council Briefing 13 March 2024



Tukuna mai ōu whakaaro

We want to
hear from you



Help us decide

Option 1, total investment of \$18.4M* preferred

Petone Library building

Total investment of \$10 million**

- A new multi-purpose facility potentially delivered in partnership, providing opportunities for more services.

Petone Wharf

Total investment of \$6 million***

- Demolish the wharf and install a memorial display to acknowledge its history.

Petone Rec grandstand

Total investment of \$2.4 million

- Demolish the seating and first floor,
- Earthquake strengthen the ground floor and install new lightweight roof,
- Provide some seating.



Financial impact

Less debt of \$14.6 million compared to Annual Plan 2023-24.

There is no rates impact as this is assumed to be debt funded.

- ✓ Prioritises the library building to ensure greater service delivery to the community
- ✓ Contributes to Petone 2040 Plan
- ✓ Assets are better protected against earthquake risks and extreme weather events
- ✓ Library investment means significant increase in the levels of service for the community
- ✓ Demolishing the wharf addresses safety concerns of a Council structure on community environment and marine life
- ✗ Operating budget for future ongoing maintenance across all assets will be determined later when more information is known about the design and activities
- ✗ Loss of a treasured community asset

Option 2, total investment of \$20 million*

Petone Library building

Total investment of \$5 million

- Refurbish the existing building including minor internal layout changes.

Petone Wharf

Total investment of \$10.2 million***

- Demolish the wharf, install a memorial display to acknowledge its history and make improvements to the Esplanade including a new viewing platform.

Petone Rec grandstand

Total investment of \$4.8 million

- Demolish the entire grandstand structure,
- Rebuild changing rooms,
- Provide some seating.



Financial impact

Less debt of \$13 million compared to Annual Plan 2023-24.

There is no rates impact as this is assumed to be debt funded.

- ✓ Simpler refurbishment on library building would mean less impact on community during works
- ✓ Addresses safety concerns of Council assets
- ✗ Only minor enhancements to levels of service
- ✗ Doesn't meet community vision in Petone 2040 plan
- ✗ Will require significant budget in the future to address ongoing maintenance across all assets – to be determined once more information is known about the design and activities
- ✗ Loss of a treasured community asset

He aha ki tua? What's next?



Snapshot of early visuals from our Consultation Document – design in progress

Our consultation approach

- Mixed methods
- Emphasis on in-person engagement activities
- Communicate in plain language
- Playful, engaging design
- Comprehensive supporting information and feedback form on our website
- Resources to support Elected Members at Kōrero drop in session
- Toolkit / 'Kete' at all our neighbourhood hubs including all engagement materials

Community Kōrero drop in sessions

- One drop-in session at each Neighbourhood Hub
- Wānanga at marae
- Jackson Street programme
- Hutt Valley Chamber of Commerce
- Riverbank Market
- NZSL supported session
- Join community hui
 - Age Concern
 - Wheels & Canes
 - Rotary

Your Engagement Kete

- Printed Consultation Document
- Feedback Form
- Key messages / FAQs
- Business card sized 'Essential Info card'
- Social media tiles
- Posters
- Flyers
- Supporting documents for more information on matters in the CD
- Conversation guide, principles of engagement
- Power Point presentation template

Calendar of events

	Date	Location	Time
1	5 April, Friday	Naenae Neighbourhood Hub	4pm–5pm
2	6 April, Saturday	Riverbank Market	10am–12pm
3	6 April, Saturday	Eastbourne Neighbourhood Hub	12pm–1pm
4	9 April, Tuesday	Moera Neighbourhood Hub	3pm–4pm
5	13 April, Saturday	Walter Nash Centre	2pm–3pm
6	14 April, Sunday	Petone Neighbourhood Hub	3pm–4pm
7	17 April, Wednesday	War Memorial Library	7pm–8pm
8	20 April, Saturday	Riverbank Market	9am–11am
9	20 April, Saturday	Koraunui Neighbourhood Hub	2pm–3pm
10	24 April, Wednesday	Petone Neighbourhood Hub	4pm–5pm
11	27 April, Saturday	Wainuiomata Neighbourhood Hub	2pm–3pm
12	1 May, Wednesday	Dowse Art Museum	5pm–6pm

Hubs and libraries

- ***Help us take the next steps***
dedicated area in each hub site
- Utilising our full suite of collateral posters, flyers, bookmarks
- FAQs available to help answer public questions
- Dedicated support for Petone neighbourhood hub
- Health and safety briefing
- Tablets available at sites who requested them

Website

Draft dedicated web pages in progress

The screenshot shows a website draft with a red header and a white main content area. At the top left is the Hutt City logo. Navigation links for 'Home', 'More Info', and 'Give Feedback' are in the top right. The main heading reads 'Whaowhia te pae tawhiti Help us take the next steps' followed by 'Mahere ā-Ngahurutanga | Draft 10 Year Plan 2024-2034'. Below this is a colorful illustration of a community scene. The text 'Kia ora! Welcome.' is centered. A paragraph explains the page is for the 10 Year Plan consultation. A list of bullet points provides instructions on how to use the feedback form. A note mentions the online feedback form functionality. A paragraph discusses the economic challenges and the importance of the 10 Year Plan. An email address 'haveyoursay@huttcity.govt.nz' is provided for questions. The section 'Tukuna mai ōu whakaaro mō ēnei take hirahira' is followed by 'We need your help to take the next steps on these four issues'. Four cards are displayed, each with an icon, a title, a brief description, and buttons for 'Browse chapter online' and 'Download chapter pdf'. The cards are: 1. 'Ratonga Wai Pararopi Water Services' (icon of a person with a water tap), 2. 'Ratonga Kohi Pararopi Food and Green Organics' (icon of a person with a recycling bin), 3. 'He murunga utu Rates relief for low-income households' (icon of a person with a shopping bag), and 4. 'Ngā hua pūmau i Pito One The way ahead for Petone' (icon of a person walking). At the bottom, a 'Give Feedback' button is present. The footer contains copyright information, 'Glossary of Terms', and 'Privacy'.

HUTT CITY Home More Info Give Feedback

Whaowhia te pae tawhiti

Help us take the next steps

Mahere ā-Ngahurutanga | Draft 10 Year Plan 2024-2034

Kia ora! Welcome.

This page is dedicated to our consultation for our 10 Year Plan 2024-2034.

Here you'll find:

- Direct links to our feedback form – click through and have your say today!
- More information about the four key issues we are consulting on, click on the big buttons below to learn more
- Extra supporting information is available on the next page with easy to navigate buttons to learn more
- The feedback form won't take you long, depending on how much detail you'd like to give. You can provide as much or as little feedback as you like.

We know you are busy, so we now have the functionality where you can save your online feedback form and come back to it later.

It's a challenging time economically for everyone, which is why this is one of our most important 10 Year Plans. Help us take the next steps in making Te Awa Kairangi ki Tai Lower Hutt a great place to live - now and into the future.

If you have any questions at all, then please email us on: haveyoursay@huttcity.govt.nz

Tukuna mai ōu whakaaro mō ēnei take hirahira

We need your help to take the next steps on these four issues

Ratonga Wai Pararopi

Water Services

For us to take the next steps in improving our water services, we're asking for your help to indicate to us the level of investment you're willing to fund through rates.

[Browse chapter online](#)
[Download chapter pdf](#)

Ratonga Kohi Pararopi

Food and Green Organics

We're asking you to tell us your thoughts on a food organics and green organics waste collection service moving forward.

[Browse chapter online](#)
[Download chapter pdf](#)

He murunga utu

Rates relief for low-income households

We're proposing a new Rates Remission Policy which would extend the amount of financial help to eligible low-income ratepayers.

[Browse chapter online](#)
[Download chapter pdf](#)

Ngā hua pūmau i Pito One

The way ahead for Petone

The Petone Library building, Petone Recreation Ground grandstand and Petone Wharf are in need of significant investment. We need your help to decide the level of investment we should prioritise.

[Browse chapter online](#)
[Download chapter pdf](#)

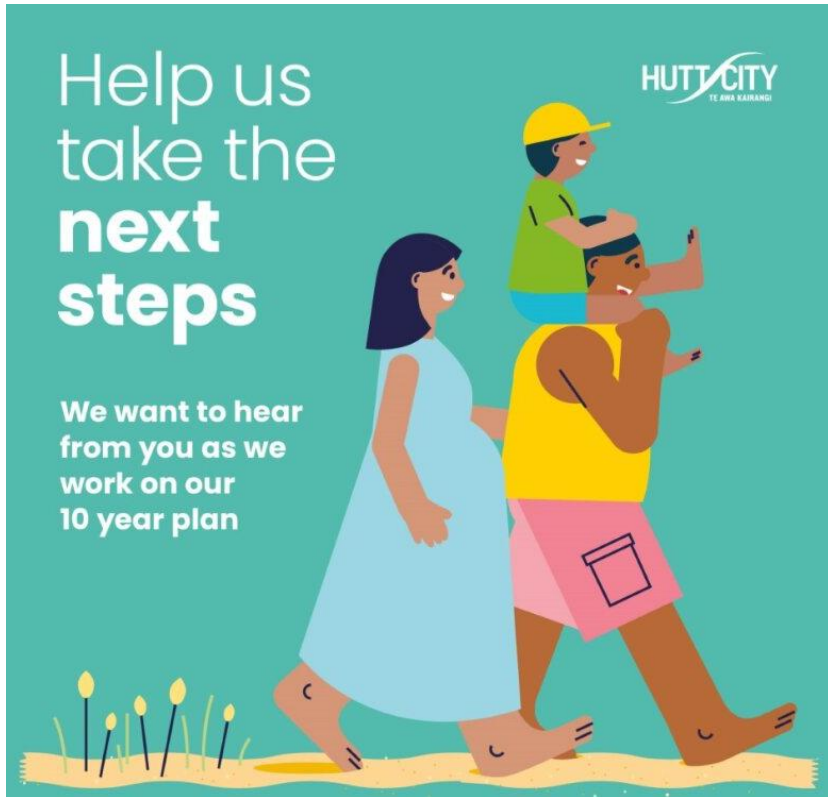
Help us take the next step

Let us know what you think about our proposal for the future.

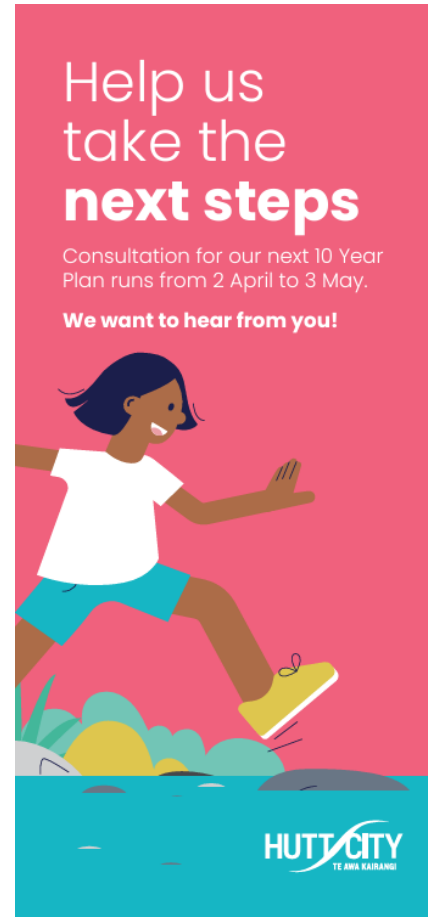
[Give Feedback](#)

© Hutt City Council 2024 | Website Powered by Squid Matrix [Glossary of Terms](#) [Privacy](#)

Creative visuals



Social media post



Flyer



Translated flyers

Āwhinatia
mai kia **kōkiri
whakamua**

Ka haere ngā whakawhitinga kōrero mō tā
mātau Mahere Tekau Tau hou ki waenga i
te 2 o Paengawhāwhā me te 3 o Haratua.

Kei te pīrangī mātau ki te rongo kōrero i
a koe!



HUTT CITY
TE AWA KAIRANGI

**अगले कदम
उठाने में हमारी
मदद करें**

हमारी अगली 10 वर्षीय योजना के लिए परामर्श
2 अप्रैल से 3 मई तक जारी रहेगा।

हम आपके विचार जानना चाहते हैं!



HUTT CITY
TE AWA KAIRANGI

Fesoasoani mai i
taumafaiga mo
le **isi laasaga o
agai atu i ai**

Talatalaga o le Fuafuaga mo le 10
Tausaga e faagasolo mai le aso 2
Aperila seia aulia le aso 3 Me.

Matou te fia iloa sou manatu!



HUTT CITY
TE AWA KAIRANGI

**帮助我们的
后续工作**

我们下一个“10年计划”的公众意见
征询将于4月2日至5月3日进行。

我们希望听到您的意见!



HUTT CITY
TE AWA KAIRANGI

Māori, Hindi, Samoan, Simplified Chinese

Essential Info Card



Other activities

- Online feedback form
- Rates calculator
- 15,000 postcards
- Citizens' Panel
- Newsletters/emails
- Flyer in rates notice
- Media / Media releases
- Print advertising
- Audio of CD on our website
- Presence in reception area at Laings Road

HUTT CITY
TE AWA KAIRANGI

Help us take the next steps

Consultation on our draft 10 Year Plan is on its way!

2 April – 3 May

We need everyone to get involved, so have your say at hutt.city/10yearplan

Our next steps:

Month	Event
April	Consultation opens Have your say from 2 April
May	Consultation closes Friday 3 May, 5pm
May	Deliberations Council will consider all community feedback and make final decisions
June	10 Year Plan adopted We adopt our new 10 Year Plan for 2024-2034

Starting soon!



HUTT CITY
TE AWA KAIRANGI

Help us take the next steps

Consultation on our draft 10 Year Plan is on its way!

2 April - 3 May

We need everyone to get involved, so have your say at huttcity/10yearplan

Our next steps:

Month	Event	Details
April	Consultation opens	Have your say from 2 April
May	Consultation closes	Friday 3 May, 5pm
May	Deliberations	Council will consider all community feedback and make final decisions
June	10 Year Plan adopted	We adopt our new 10 Year Plan for 2024-2034

Starting soon!



Questions?