

# Wellington Regional Waste Management and Minimisation Plan 2023–2029

---

(The "WMMP")

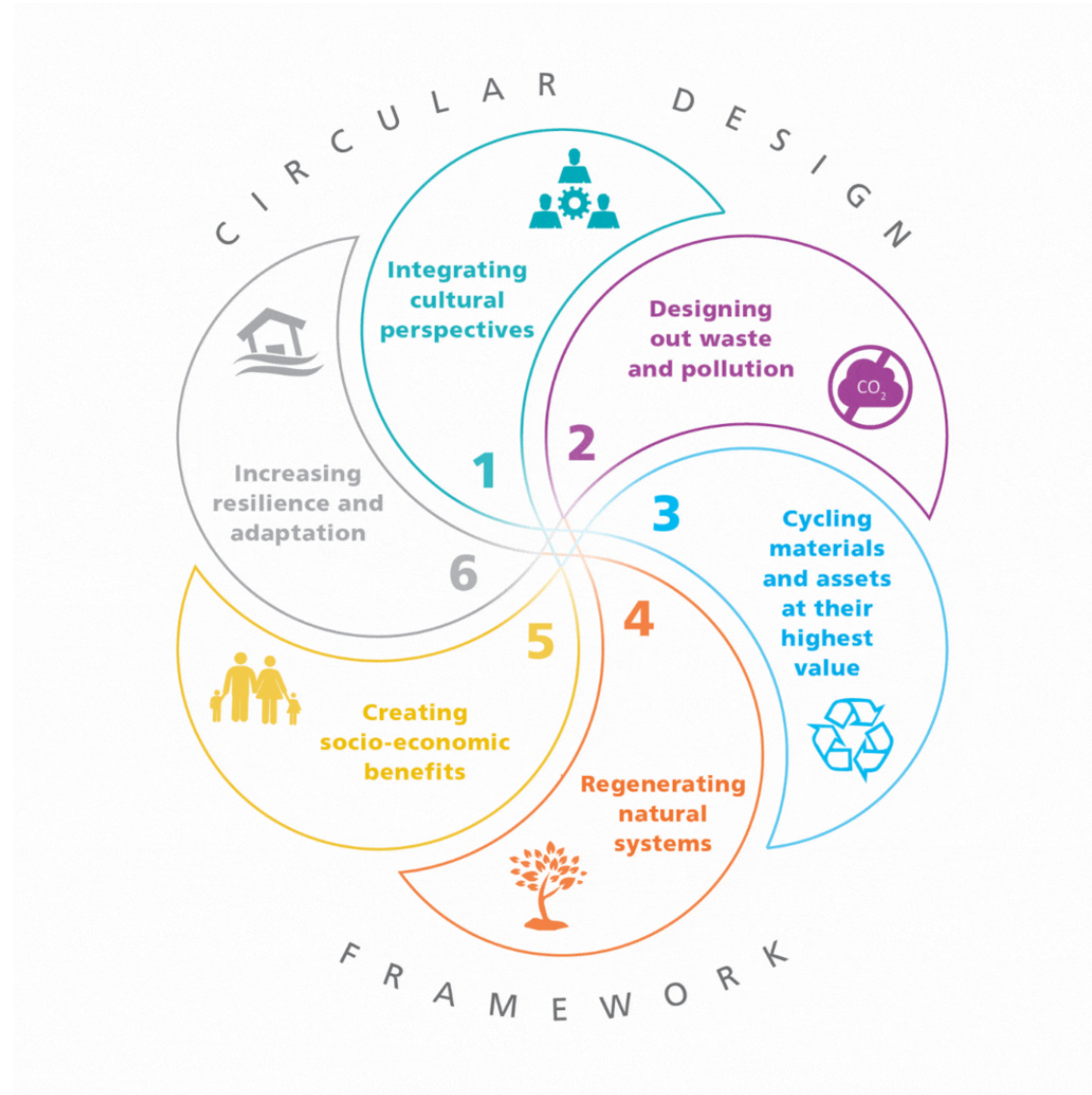
# Essentially, the WMMP is how we go from here...



**To there...**



# The Circular Economy



# Waste Management and Minimisation Plans

Set direction for:

- How we manage and minimise waste in our city and region
- Regional and local actions for waste management and minimisation efforts



# Waste Management and Minimisation Plans

Have three parts:

**Part A: The Overarching Strategy:**

**Part B: The Local and Regional Action Plans:**

**Part C: Appendices**



# The Process So far...



# NZ Waste Strategy

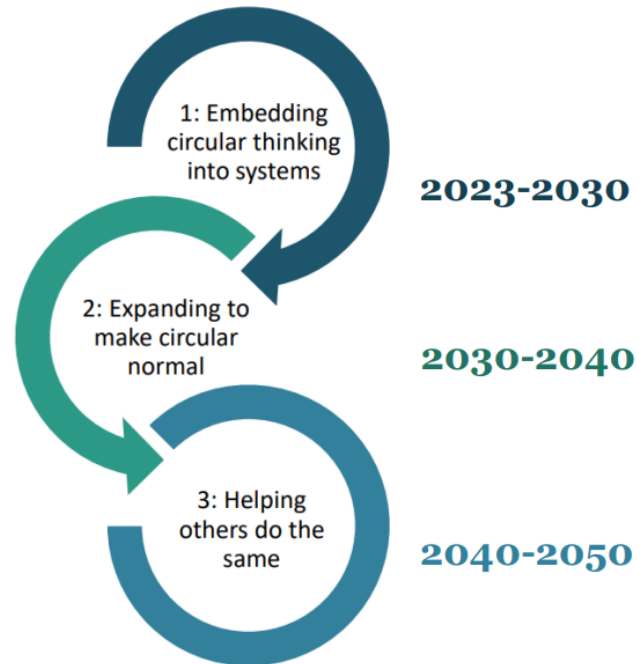
**Vision:** By 2050, Aotearoa New Zealand is a low-emissions, low-waste society, built upon a circular economy.

*"We cherish our inseparable connection with the natural environment, and look after the planet's finite resources with care and responsibility."*





# Waste Strategy Targets



## By 2030:

- Reduce the amount of material entering the waste management system by 10 per cent per person
- Reduce the amount of material that needs final disposal by 30 per cent per person
- Reduce the biogenic methane emissions from waste by at least 30 percent



# Draft Vision

***"Working together to reduce waste and maximise the value of materials –for people, environment, and economy."***



# Draft Objectives

- Waste and resource recovery systems support a reduction in greenhouse gas emissions.
- There is collective responsibility within the Wellington Region for our resources and environment.
- There is better influence and advocacy for waste outcomes in the Wellington Region.
- Residents, businesses, and other organisations are encouraged to reduce waste.
- Waste and resource recovery services and systems are in place to increase material circularity.
- It is accessible and convenient for residents and businesses to divert their waste.
- Waste and resource recovery systems are traceable and transparent.
- Residual waste is managed safely and effectively in accordance with best practice.
- Waste disposal infrastructure is treated as finite and provides resilience in the waste management system.



# Stakeholder Engagement

Workshops were held with:

- 1) Community leaders in waste reduction
- 2) Representatives of large industry and waste management organisations
- 3) Wider council staff



# Stakeholder Engagement

Workshop participants were asked to:

- Identify what is working well/what is already in progress that the WMMP could support
- Identify the biggest challenges/barriers they are facing
- Brainstorm solutions and generate ideas that could be included in the next WMMP



# What is Working Well...

Community Groups/NGO's	Industry	Council Staff
<ul style="list-style-type: none"> <li>• Collaboration</li> <li>• Community initiatives</li> <li>• Information and education campaigns</li> </ul>	<ul style="list-style-type: none"> <li>• Partnerships</li> <li>• Shift in public knowledge, engagement and attitudes</li> <li>• Innovation</li> <li>• Access to waste services and initiatives</li> </ul>	<ul style="list-style-type: none"> <li>• Waste reduction and recycling initiatives</li> <li>• Collaboration</li> <li>• Understanding of the need for a circular economy</li> <li>• Increased funding for waste minimisation activities</li> </ul>



# Roadblocks and Barriers

Community groups/NGOs	Council staff	Industry
<ul style="list-style-type: none"> <li>• Funding framework</li> <li>• No product stewardship</li> <li>• Lack of support for behaviour change</li> <li>• Council departments not integrated</li> <li>• Inconsistent messaging across TAs</li> </ul>	<ul style="list-style-type: none"> <li>• Lack of resources and capability</li> <li>• Public appetite, resistance and resilience to change</li> <li>• Consumer cost of better-quality products</li> <li>• Ambiguous information</li> <li>• Lack of support for circular economy</li> </ul>	<ul style="list-style-type: none"> <li>• Lack of govt leadership</li> <li>• Lack of systems available across the region</li> <li>• Landfilling is cost effective</li> <li>• Uncoordinated councils</li> <li>• Lack of funding certainty (short term contracts)</li> </ul>



# High Priority LAPS

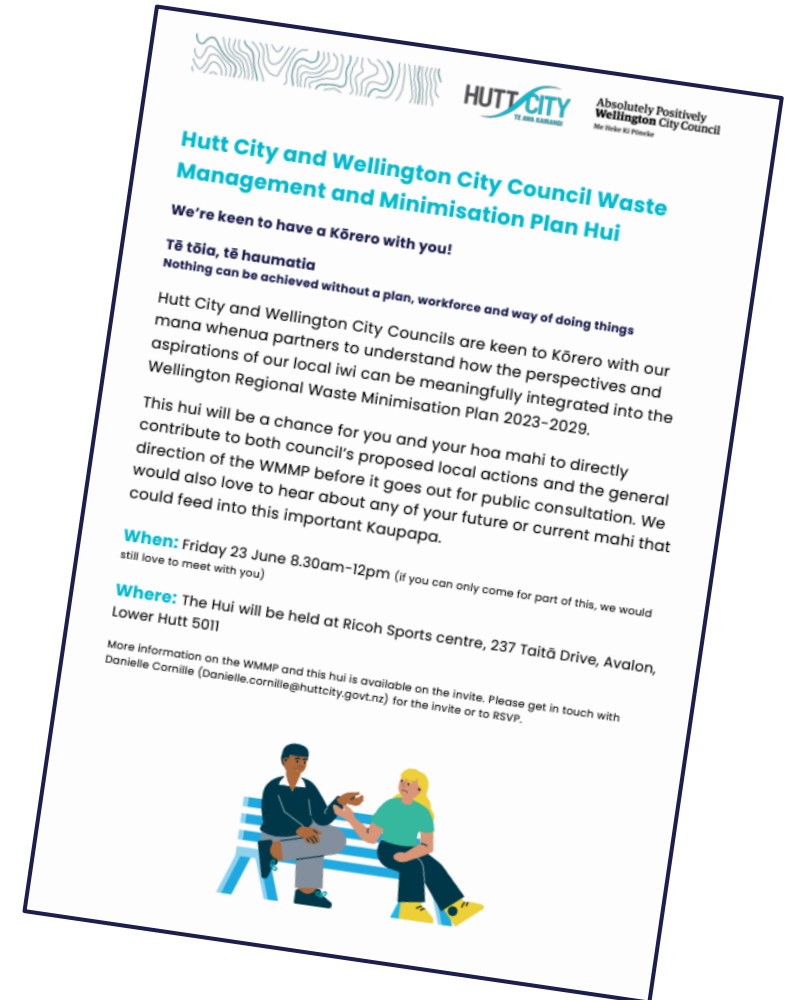
- Continue to support and strengthen the relationships with our waste minimisation partners.
- Continue to implement bylaw provisions while monitoring and enforcing current provisions.
- Collaborate with councils from the Wellington region to establish collections and processing of construction and demolition waste
- Reduce the disposal of food and/or green waste to landfill
- Prioritise the decarbonisation of all HCC solid waste contracts





# Mana Whenua Engagement

- Council's meeting with respective Iwi
- HCC/WCC hui scheduled for June 23<sup>rd</sup>
- External Te Ao Māori facilitator
- Chance for iwi to contribute to general direction of WMMP and local/regional action plans



# Consultation Approach

- Joint Committee approach
- The final WMMP (2023-2029) will be adopted by each individual council



## Next steps

- Feedback to Beca on draft WMMP (draft received on 09 June)
- Revised draft WMMP reissued to councils (date TBC)
- Approval to consult from Joint Committee (date TBC)
- Special consultative procedure (dates TBC)
- Recommendations from Joint Committee to councils (date TBC)



# Questions?