

What does the Aotearoa Emission Reduction Plan mean for Hutt City Council?

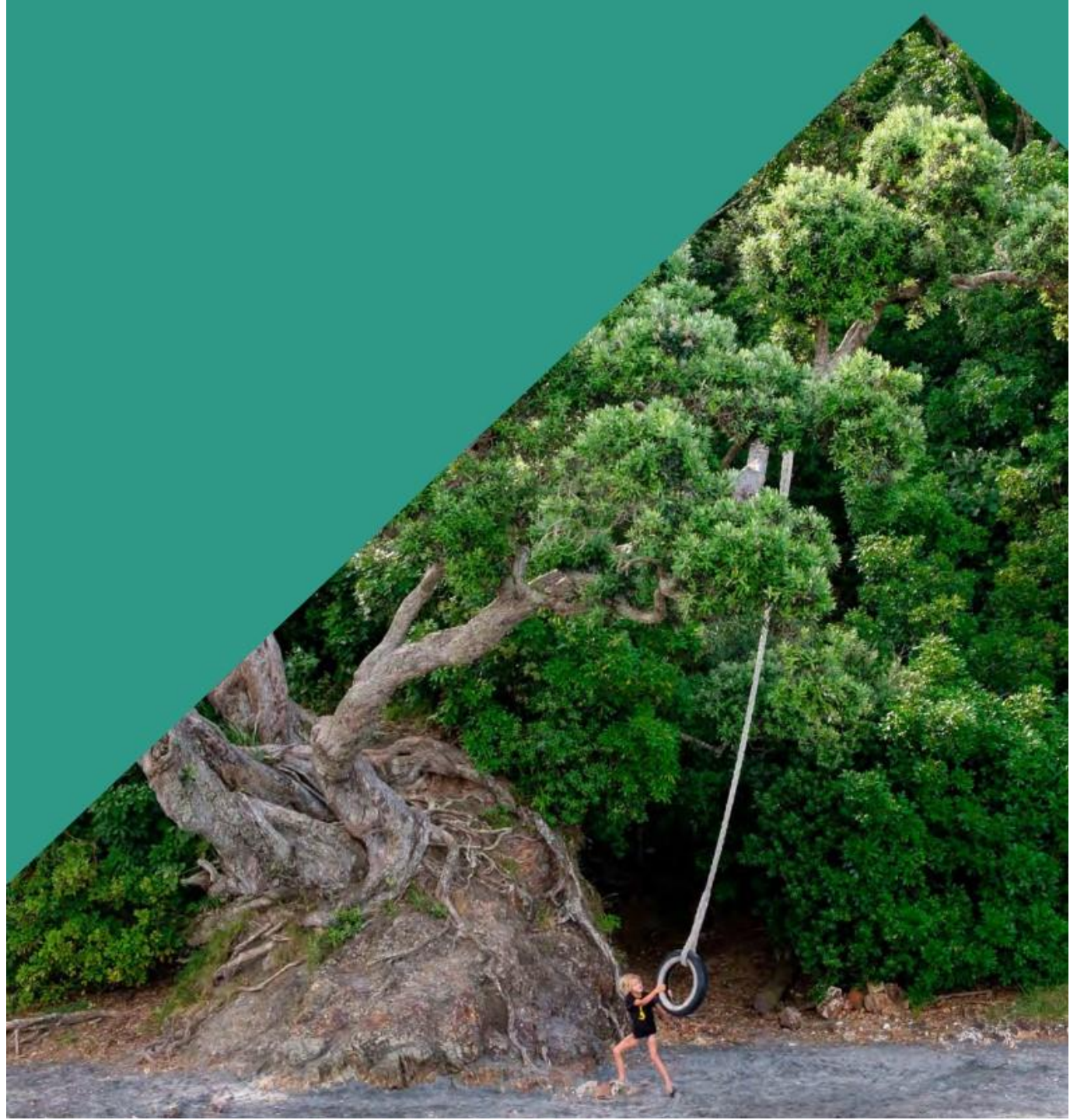
What we'll cover:

Principles

Budgets

Actions and plans
relevant to Council

Our progress and
any gaps

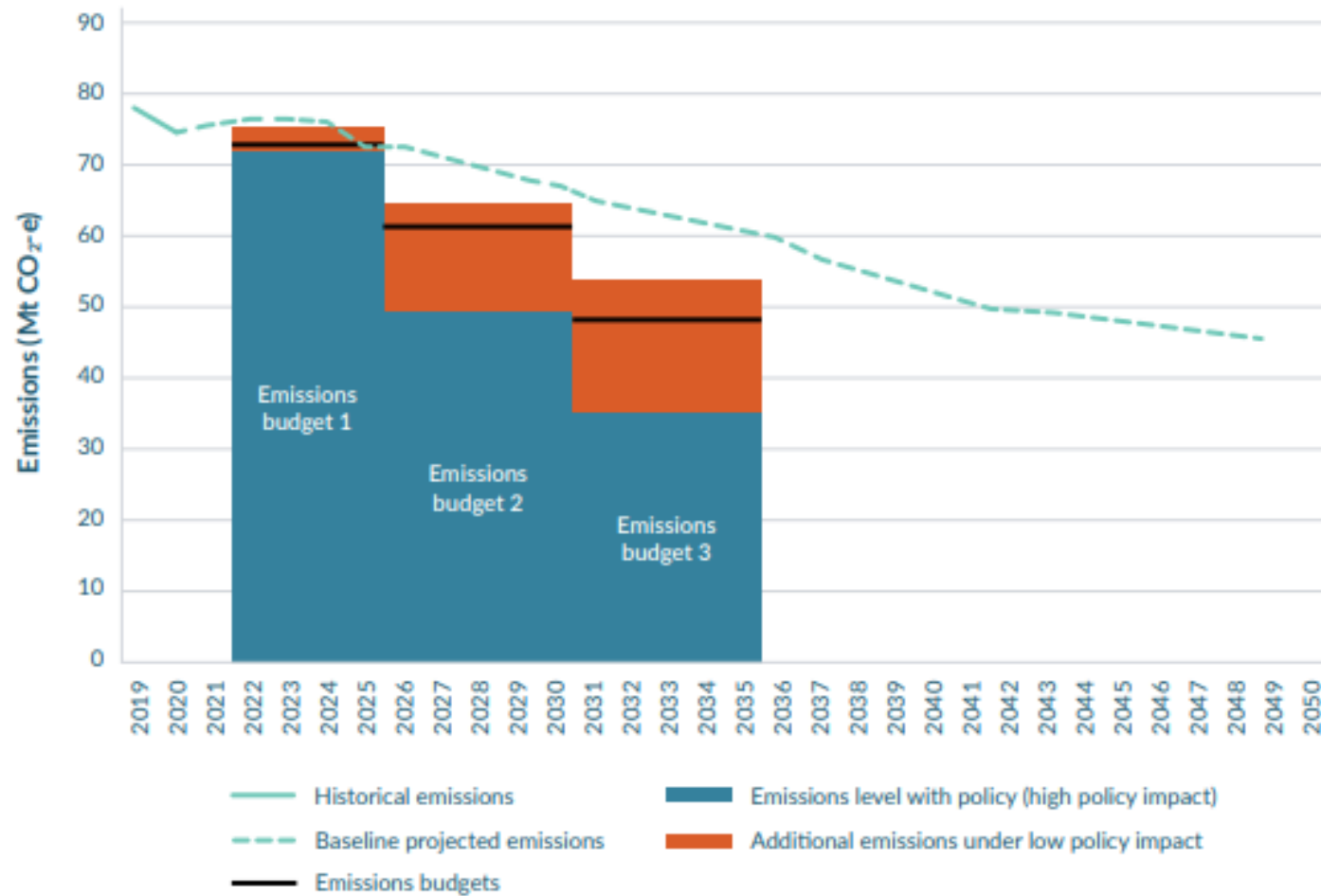


Principles

1. Playing our part
2. Empowering Māori
3. Equitable transition
4. Working with nature
5. A productive, sustainable and inclusive economy



Emissions budgets



The role of Local Government



Lower Hutt's Emissions



Lower Hutt total direct emissions

Percentage of total emissions



Planning and infrastructure

Well-functioning urban environments

Planning rule changes intended to reduce climate change related hazard risk

Green financing

Low emissions building and infrastructure

Nature based solutions



Transport

Integrating planning and transport

Walking and cycling improvements

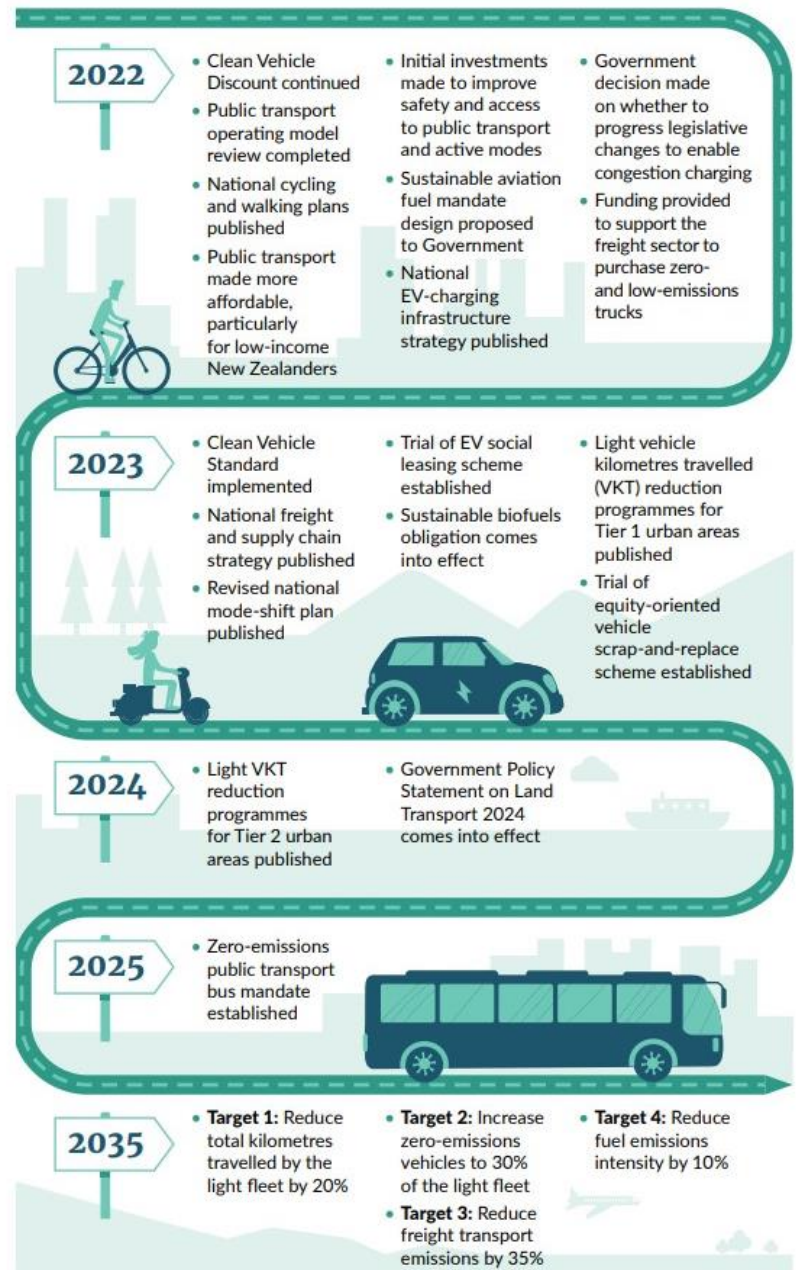
Congestion charging and other demand management tools

Public transport improvements

Increasing share of low- and zero emissions vehicles

Increase access to charging infrastructure and bike parking

Figure 10.1. Transport route map to 2035



Energy use and generation

100% renewable energy generation

Healthy Homes Standards

Building code updates

Warmer Kiwi Homes Programme

Government Investment in Decarbonising Industry (GIDI) fund

Business support programmes delivered by EECA



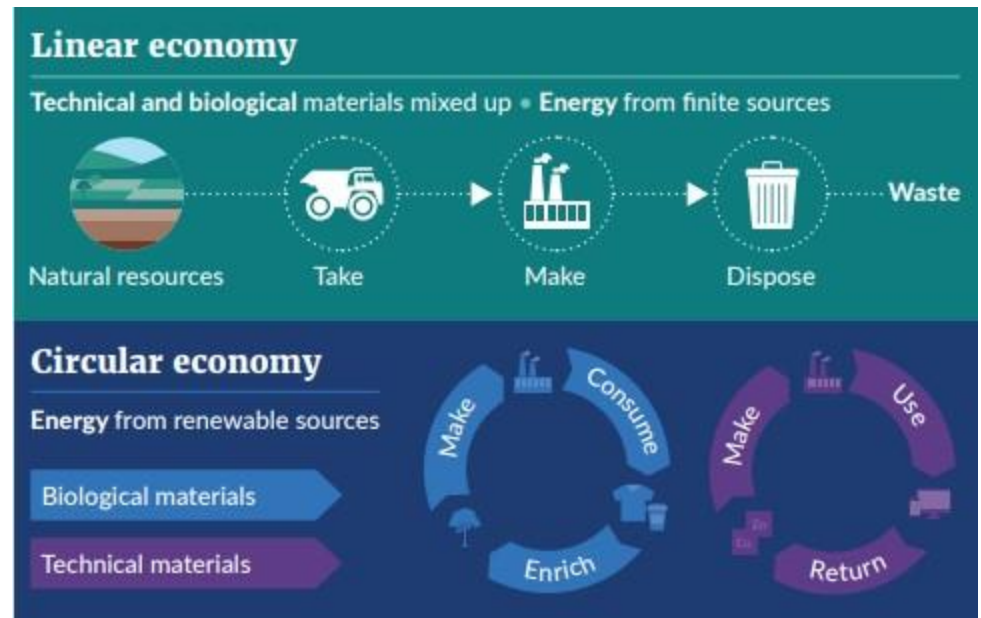
Circular economy and waste

Circular resource use:

- food waste into compost
- right to repair
- sharing economy

Landfill gas capture system

Procurement that requires consideration of circularity



Education, participation and awareness

Climate Information Centre

Māori-led climate education and awareness.

Changes to NCEA and resources for kaiako/teachers

Enabling retraining for emerging industries out of emissions intensive industries



Gaps for Hutt City Council

- Transport emissions reduction planning and targets
- Understanding of Council's role in communication, educating and supporting communities through climate change
- Sufficient resources dedicated towards climate action (including for working with community, transport and adaptation)
- Nature based solutions
- Enable Māori-led solutions



Summary

The Government's first Emissions Reduction Plan covers all areas but is unlikely to be sufficient and future plans may require steeper reductions

Hutt City Council is working on emissions reductions with leading examples. However, it's unlikely to be sufficient to meet emissions budgets

There's an evolving role for local government in working with community and mana whenua on climate action

