

Spatial Plan

For Lower Hutt

Update to Councillors July 12 2023

INTRODUCTION

Greetings and acknowledgments

PURPOSE

Update on the work that is underway and introduce a strategic direction for the next 30+ years through a spatial plan for Hutt City



WHY DO WE NEED A SPATIAL PLAN?

- Over the next few decades, **Lower Hutt is going to see a lot of changes in the urban environment**; the spatial plan will provide a long term strategic direction and support well inform decisions about how and where the city should grow.
- The spatial plan is intended to **meet the national and regional requirements for councils** (RMA reform, Spatial Planning Bill, NPS-UD, FDS, etc).
- Based on existing and future projects and strategies identified in different areas of Lower Hutt, it is important to **develop a spatial plan for the wider City to align those projects into one vision.**

GROWTH DOCUMENTS TO DATE IMPACTING THE FUTURE OF LOWER HUTT

- **Hutt City Urban Growth Strategy – 2012.**
 - Outdated document that needs a refresh with more spatial considerations.
- **Wellington Regional Growth Framework (WRGF) – 2021.**
 - High-level spatial plan that is not considering the specificities of Lower Hutt that put Hutt City at risk in terms of determining the future of the area.
- **Wellington Future Development Strategy (FDS) – Ongoing.**
 - FDS is based on the WRGF and induces the same risks.

The missing link for a comprehensive approach

Wellington Regional Growth Framework

A 30+ year regional spatial plan – a high level directional document developed collectively. Developed as part of the government Urban Growth Agenda.

Council Growth Strategies

Individual council long term strategy documents developed from time to time to outline the growth expectations in the council areas. Often undertaken prior to District Plan changes being considered.

Regional Policy Statement and Regional Plan

The Regional Policy Statement sets out the framework and priorities for resource management in the region. It is a requirement under the Resource Management Act. Regional plans, district plans and the Regional Land Transport Strategy are required to give effect to the Regional Policy Statement. The purpose of regional plans is to assist a regional council to carry out its functions in order to achieve the sustainable management purpose. Both must be reviewed every 10 years.

Regional Land Transport Plan

A requirement under Land Transport Management Act. Prepared by Regional Transport Committee's every 6 years (reviewed every 3 years). They describe the region's long term vision for land transport and identify short-medium term investment priorities to move toward this vision. They also include a regional programme of transport activities proposed for funding over the next 3 to 6 years.

Future Development Strategy

A requirement under the National Policy Statement on Urban Development (2020) which needs to demonstrate that there will be sufficient, feasible development capacity in the medium and long term within a council area. Must be reviewed every 6 years.

Long Term Plan & Infrastructure Strategy

A requirement under the Local Government Act. The LTP sets out the priorities for 10 years, including what the council will do, how much it will cost and how it will be funded. It must be reviewed every 3 years. The Infrastructure Strategy covers a period of at least 30 consecutive financial years. The purpose is to identify significant infrastructure issues and options for managing them over the period.

District Plan

A requirement under the Resource Management Act which helps each council manage development in its city, town or region. It contains policies and rules related to development. Must be reviewed every 10 years.

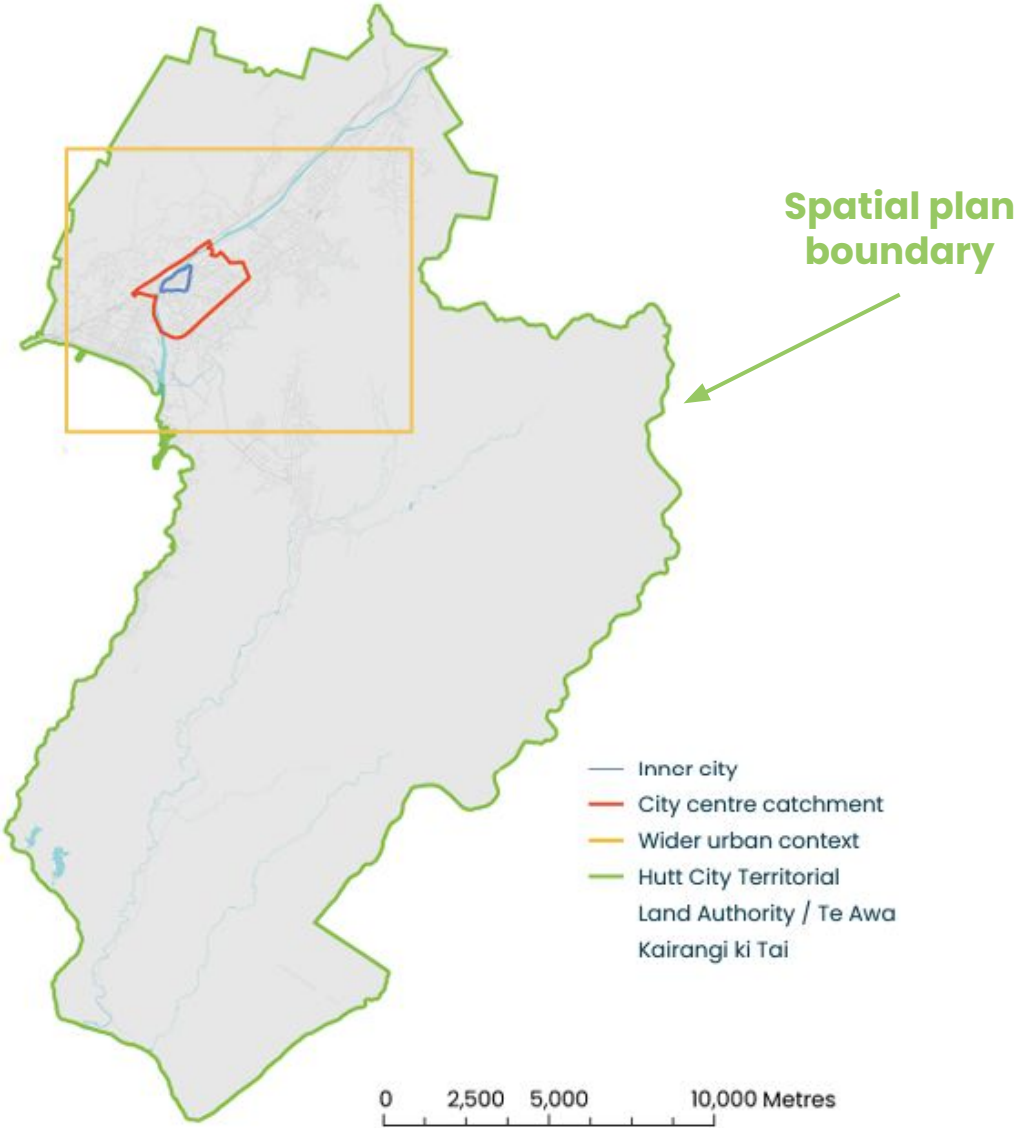


WHAT IS THE PURPOSE OF A SPATIAL PLAN?

- The spatial plan will provide a **strategic vision and guidance for the future development of Hutt City**, outlining goals and objectives for sustainable growth.
- It will help **define and spatialise the future growth areas** while protecting/enhancing the existing character and specificities of Hutt City.
- The spatial plan will outline the **areas to be protected from urbanisation**, which include environmental, ecosystem and cultural protection.
- The spatial plan will help **define the future land use** to implement its vision.



Spatial Plan Area



Spatial Plan Area

Spatial plan boundary:
**Hutt City territorial
land authority**

**The spatial plan analysis will
be focused in specific
geographic areas:**

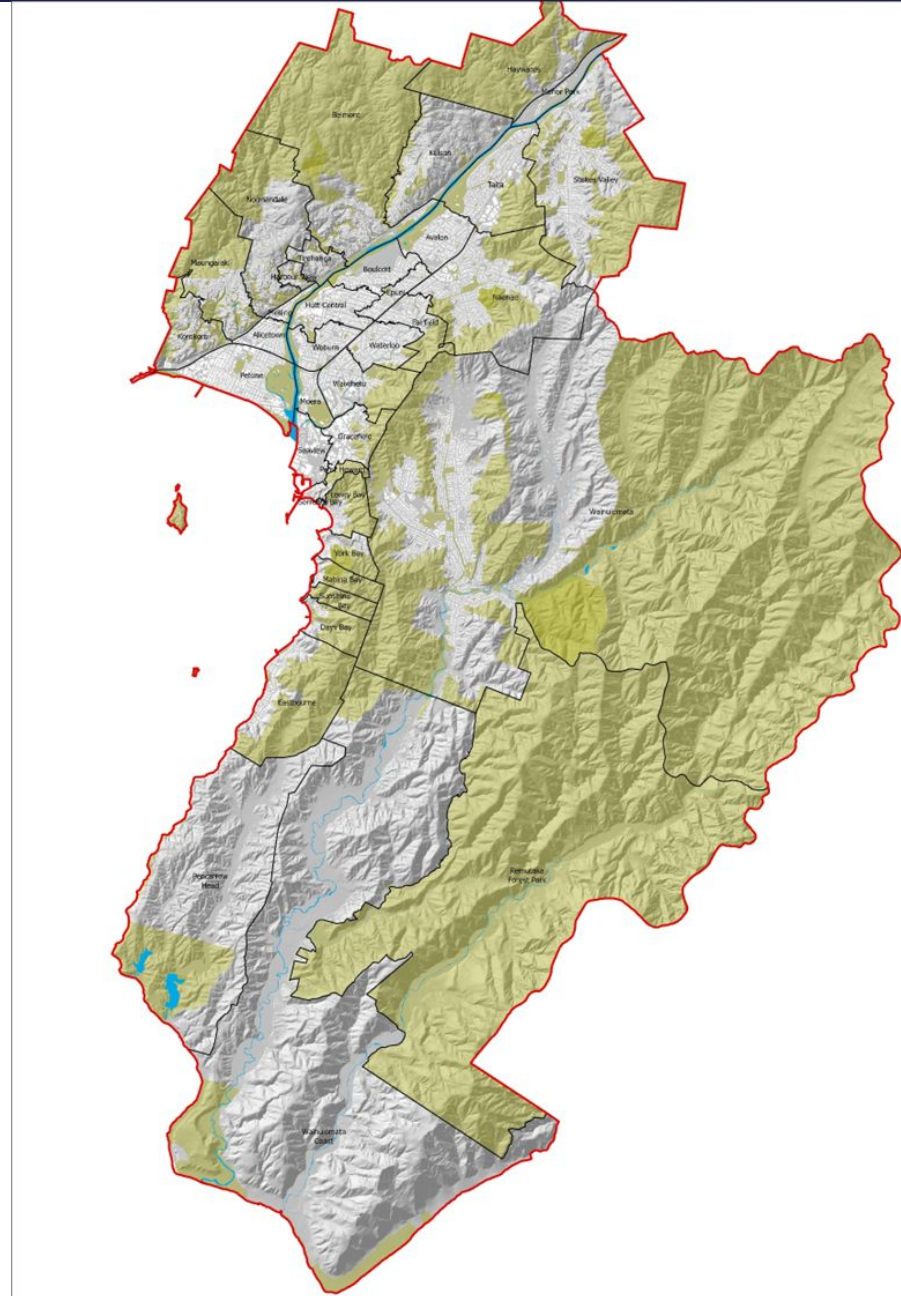
Central City Catchment Area
(Including Waiwhetu-Woburn-Epuni-
Boulcott- Melling - Hutt Central)

Transport nodes:

- Petone - Ava (including Alicetown and Moera)
- Te Ngae ngae
- Wingate - Taita - Pomare (Including Avalon and Manor park suburbs)

Specific key suburbs:

Wainuiomata
Stokes Valley
Western Hills
Seaview and Eastbourne



To be further
developed
through
spatial
planning
workstream

OUR VISION

An attractive, vibrant and liveable centre
that embraces change through promoting new business,
housing, recreation and enterprise opportunities
(CCTP 2019)



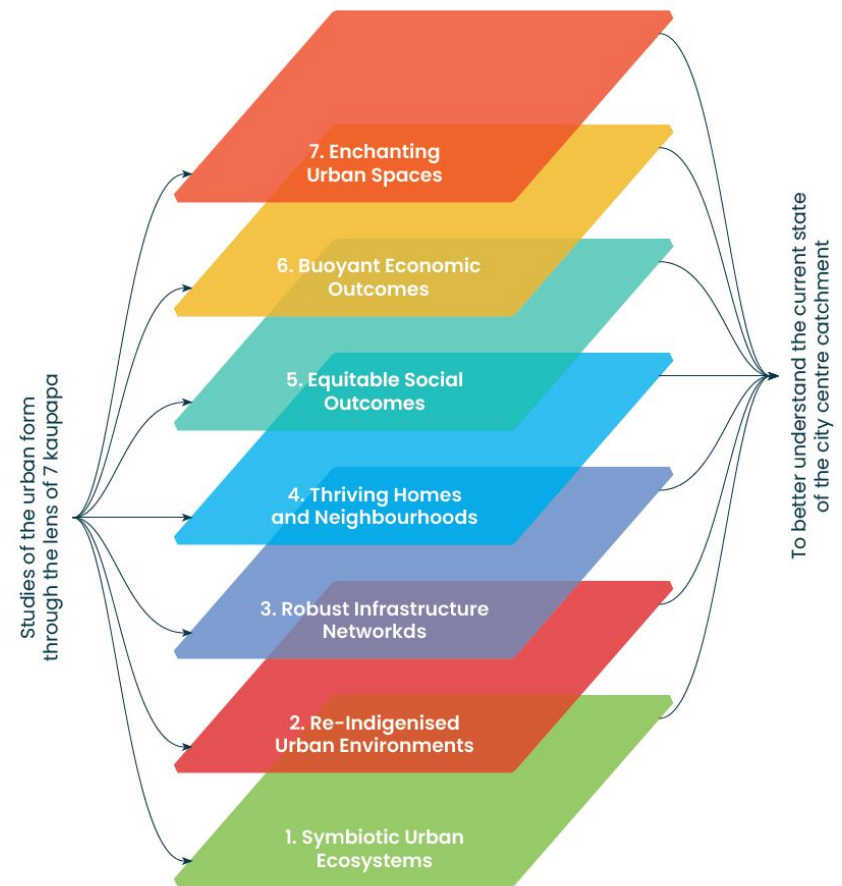
THE SPATIAL PLAN IS PART OF THE URBAN RENEWAL PROGRAMME:

- **Spatial planning & design (Ngā Mahere Tupu)**
- Outcomes, monitoring and evaluation
- Strategic use of land and property
- Exploring funding opportunities (DC's/FC's/central government and private sector)
- Communication & Engagement
- Infrastructure delivery (IAF)
- Major project delivery (RiverLink / Te Wai Takamori o Te Awa Kairangi, CDOs such as Waterloo TOD and City Centre)
- Culture & Heritage initiatives (TBD)
- Placemaking

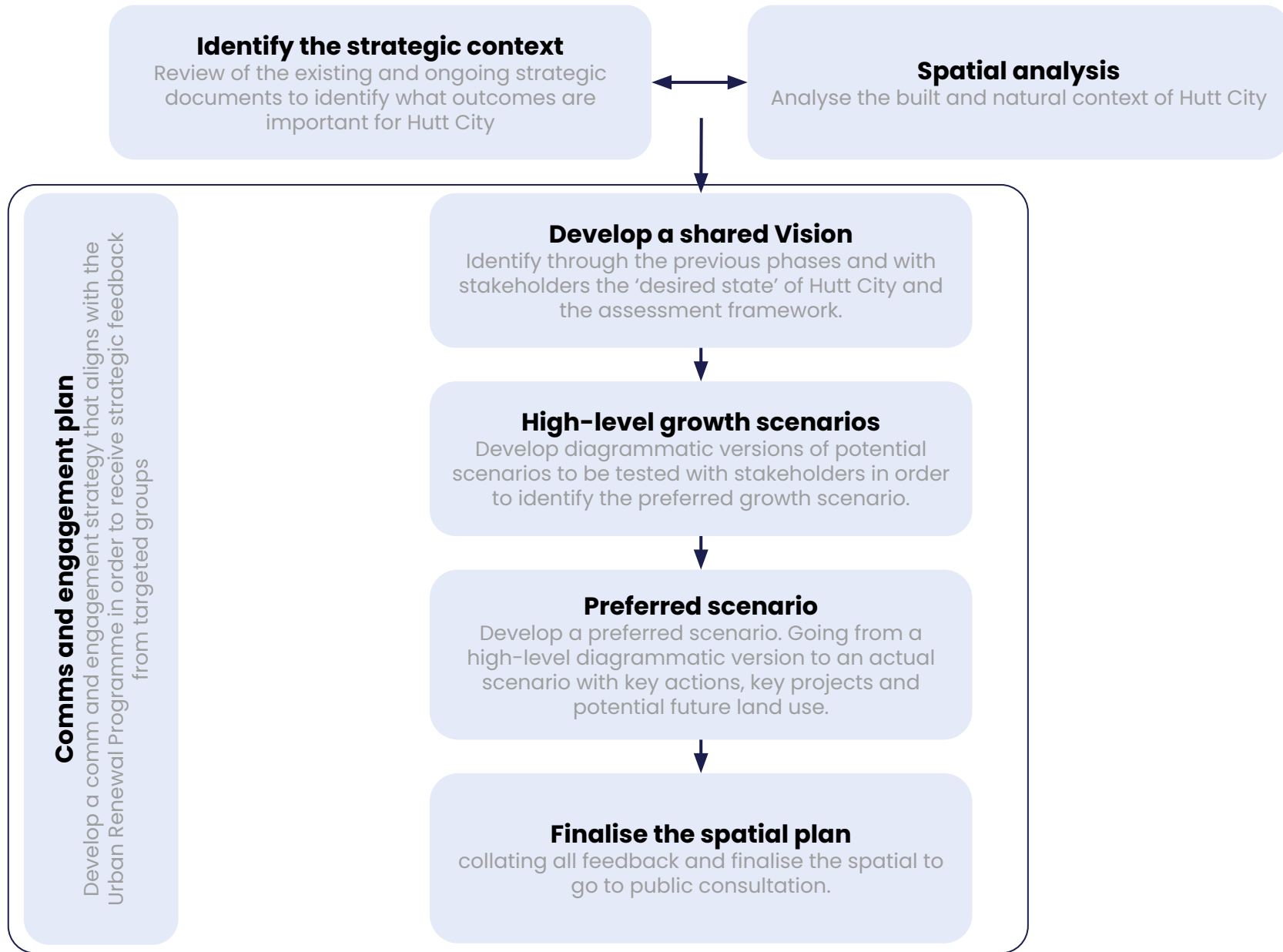


The spatial plan will rely on 7 kaupapa:

- 1.** Symbiotic Urban Ecosystem
- 2.** A re-indigenised urban environment
- 3.** Robust and resilient infrastructure
- 4.** Thriving homes and neighbourhoods
- 5.** Equitable urban environment
- 6.** Buoyant economy
- 7.** Enchanting urban environment



PROJECT PROGRAMME



Work to date – Phase 1

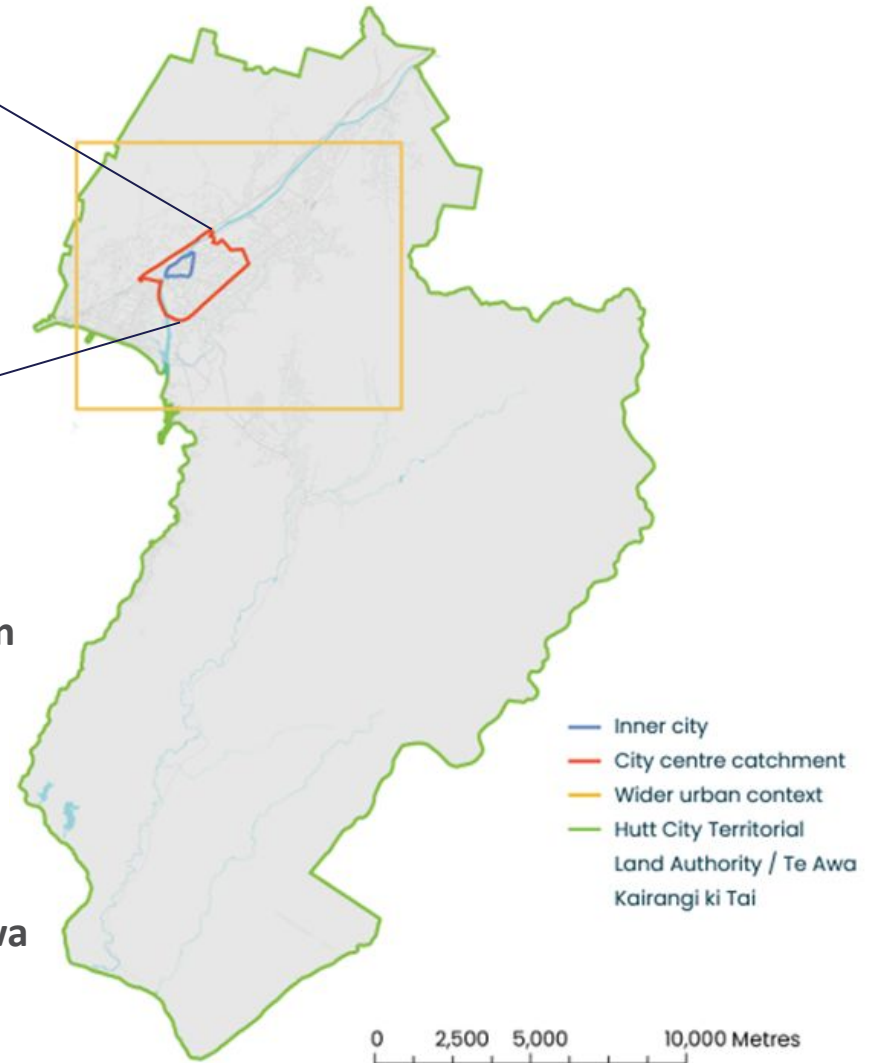
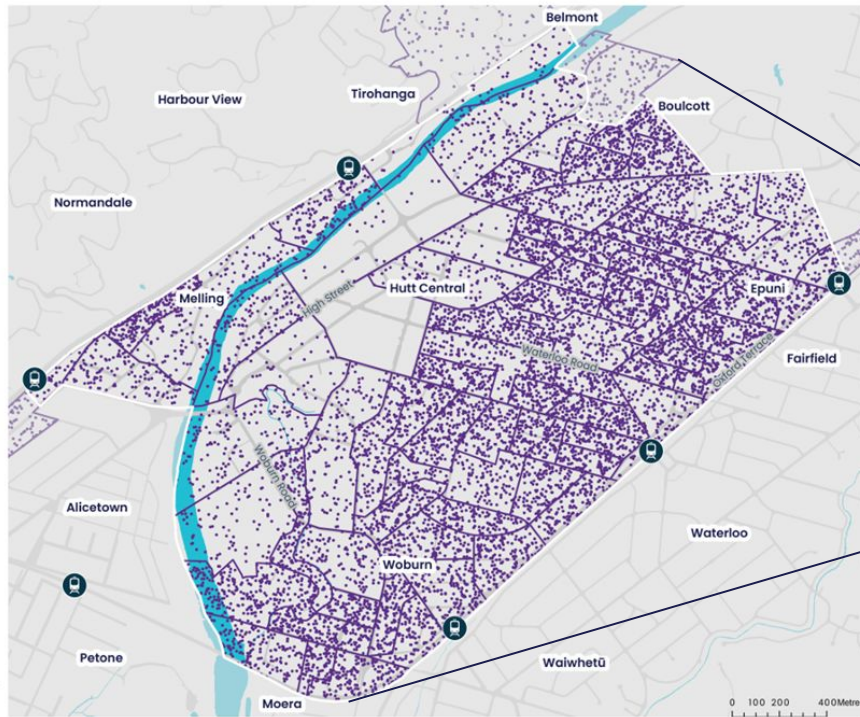
Analysis of the City Centre catchment

Urban Design Analysis 2023

A series of studies of the City Centre Catchment in Te Awa Kairangi ki Tai.
Collated by the Hutt City Council Urban Design Team.
Version 2 - April 2023.



Urban Design Analysis of
City Centre Catchment
Kaupapa Robust
Infrastructure Networks
Map 32
**Population
Density**
April 2023



This document is a series of studies of the current urban form (within the city centre catchment) and its impacts on people and the environment.

The seven interconnected studies (Kaupapa) develop an understanding of the current urban development landscape in Te Awa Kairangi ki Tai.

Each kaupapa study analyses the current urban form and associated outcomes to better understand if the urban environment is currently supporting the high-level aspiration captured in the kaupapa title.

**Map
Mana Whenua
Cultivation Sites**

April 2023



Legend

- Roads and Railways
- Water
- City Centre Catchment
- Train Station
- Cultivation Sites

Data Source

Cultivation Sites: 2015 CIA Notes,
Riverlink ARCH & HCC Notes,
2019 GWRC PNRP Notes, Great Harbour
of Tara



**Map
Vegetation and
Open Reserves**

April 2023



Legend

- Buildings
- Roads and Railways
- Water
- City Centre Catchment
- Train Station
- High Vegetation >8m
- Medium Vegetation 2-8m
- Public Reserves (grass)

Data Source







Vegetation: HCC 1m resolution raster derived from LiDAR points classified as high vegetation
Reserve areas: as specified in the District Plan 2023



Map Flooding Risk

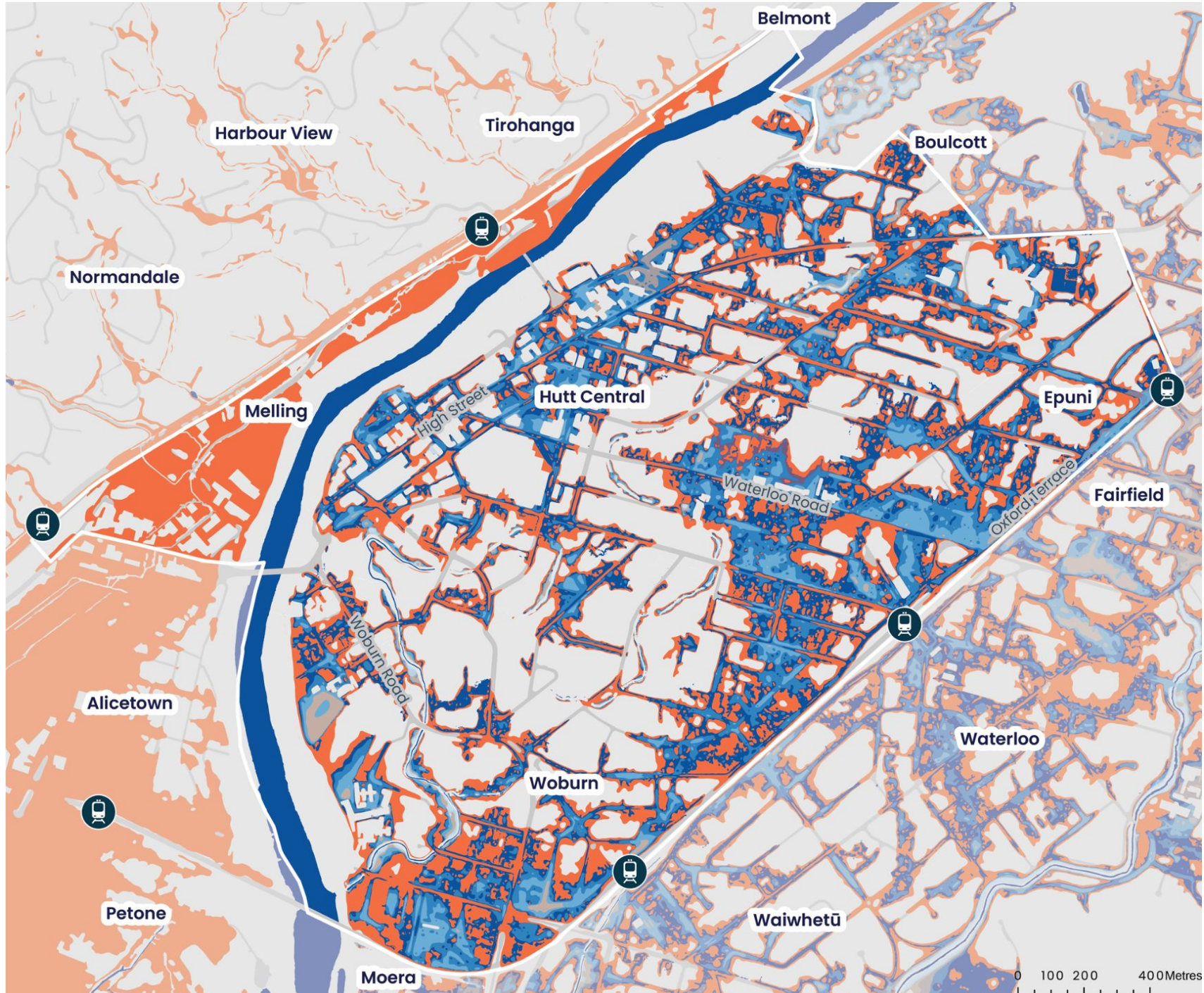
April 2023

Legend

-  Roads and Railways
-  Water
-  City Centre Catchment
-  Train Station
-  0.01 - 0.1m
-  0.1 - 0.25m
-  0.25 - 0.5m
-  0.5 - 1.0m
-  >1m
-  Inundation Area

Data Source

Flooding Depth: 100 year flood extent determined by modeling, including adjustment for climate change from Wellington Water Ltd. and currently used by the Engineering Team to determine minimum floor levels.
Inundation Area: Created from WWL latest draft hydraulic modelling of stormwater flooding [during the design 100yr ARI (Annual Recurrence Interval) + Climate Change event] and represents the extent of flooding with a depth of 0.05m or greater.



Urban Design Analysis 2023

A series of studies of the City Centre Catchment in Te Awa Kairangi ki Tai.
Collated by the Hutt City Council Urban Design Team.
Version 2 – April 2023.

This document is:

A series of studies of the current urban form (within the city centre catchment) and its impacts on people and the environment.

It includes:

Policy landscape reviews of national and local plans, strategies and policies

SWOT analyses of the current state of the city centre catchment's urban environment informed by: Visual site analyses

Desktop analyses of internal and external data relating to the urban form

Light demographic analyses of people who live in, or use the urban environment



Urban Design Analysis 2023

A series of studies of the City Centre Catchment in Te Awa Kairangi ki Tai.
Collated by the Hutt City Council Urban Design Team.
Version 2 - April 2023.

This document is not:

- A vision for the city
- A strategy for the future
- A representation of wider community aspirations for the future of the city



Work to date – Phase 2

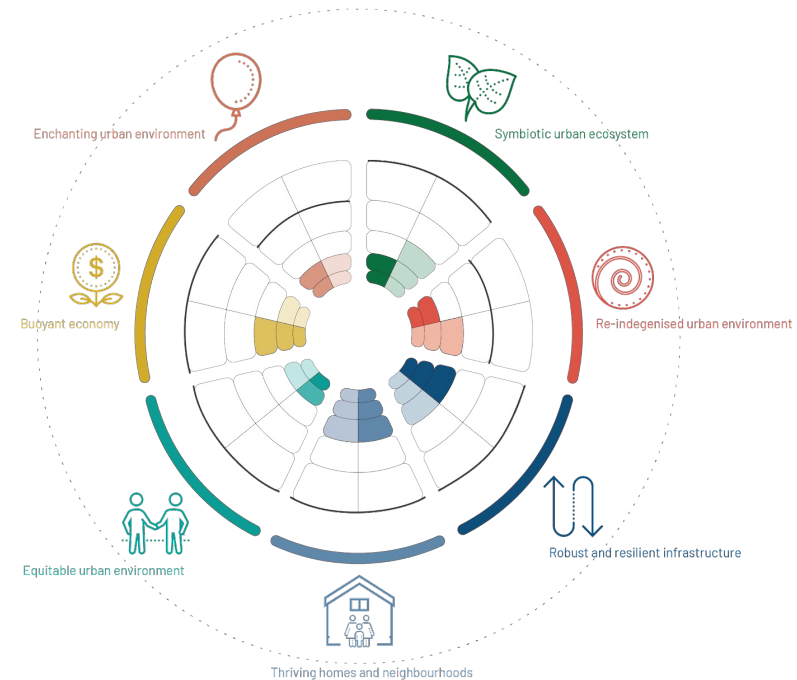
Assessment framework

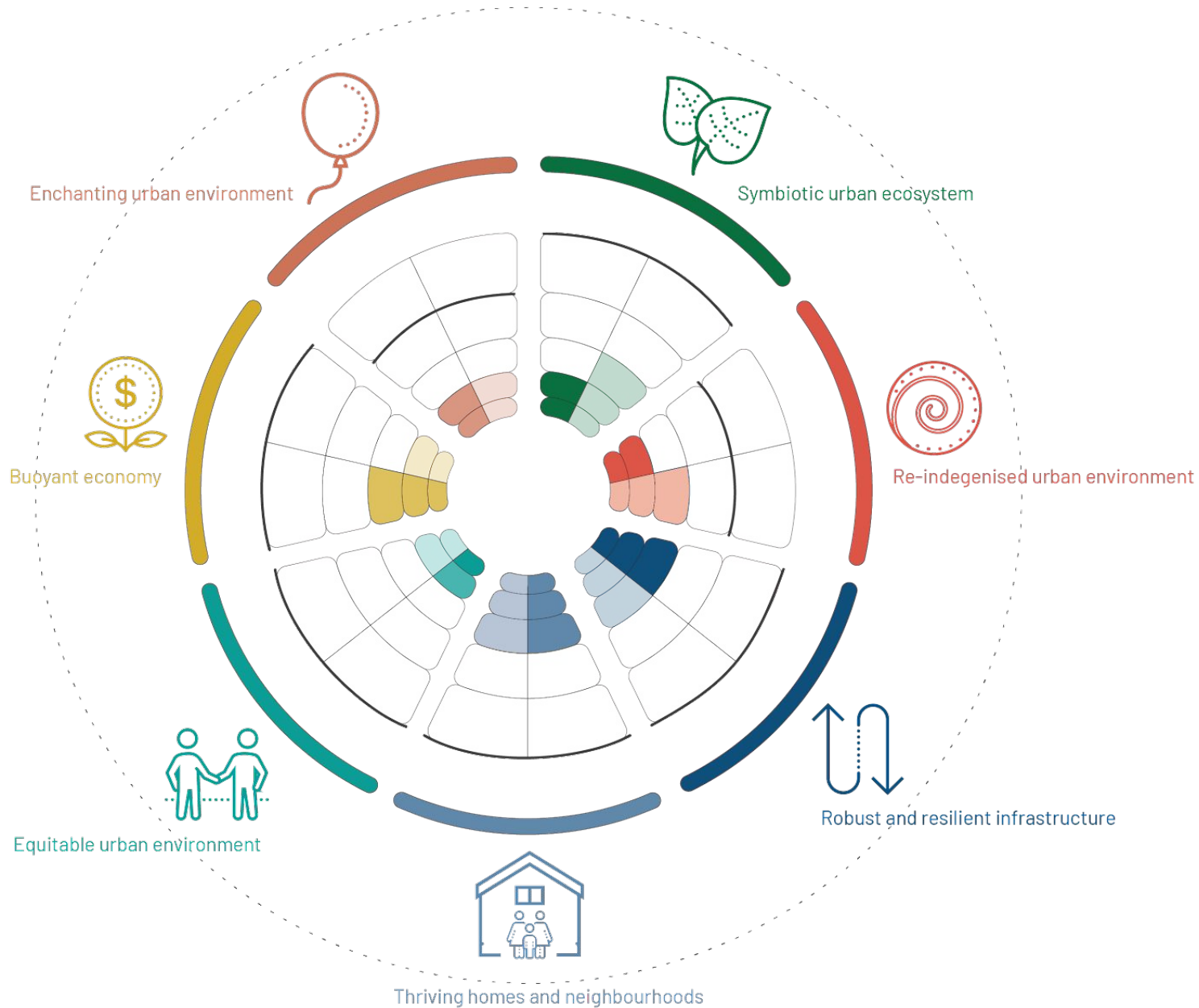
Outcomes Monitoring and Evaluation Framework



The outcomes monitoring and evaluation framework from the Urban Renewal Programme will be used for the spatial plan.

This will ensure consistency and coherence between programmes and workstreams.

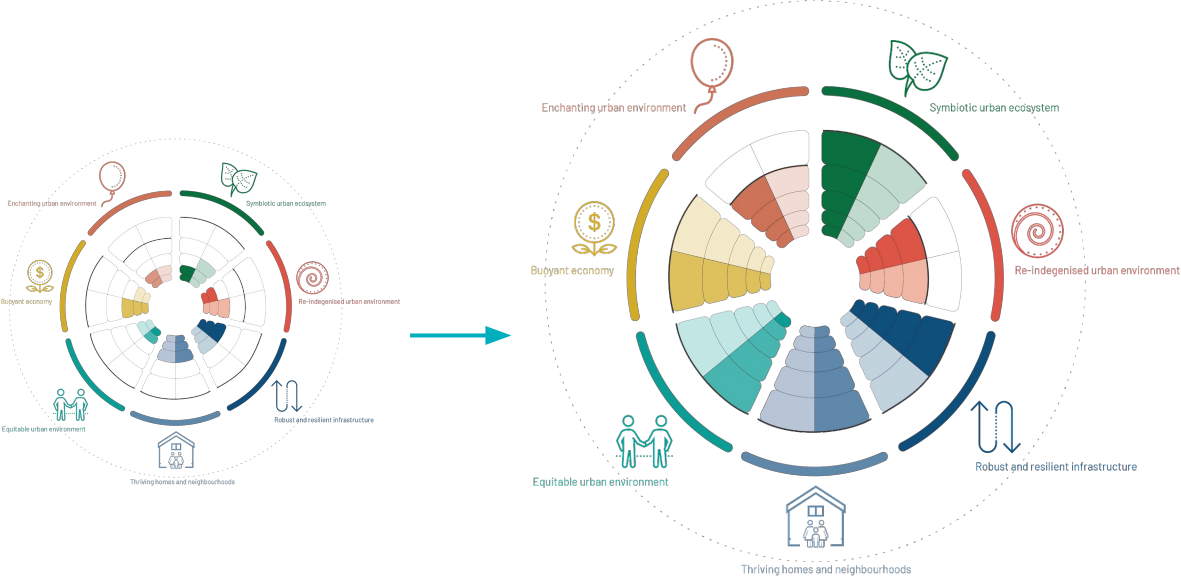




The wheel will be used to assess the current state of Hutt City and to measure the proposed scenarios success

GOALS & TARGETS

Our aim is to become a “high performing urban fabric” where our outcomes are met or exceeded, and our residents are living in the best possible Hutt City.



CURRENT STATE
Compromised outcomes

DESIRED STATE
Meeting outcomes



Engagement



Any questions?



END
Thank you for your time.

Programme Sponsor: **Kara Puketapu-Dentice**

Programme Manager: **Richard Barton**