

Update on Resource Recovery at Silverstream Landfill transfer station

10 August 2022

Briefing to HCC and UHCC

Jörn Scherzer (Head of Climate and Waste) &
Dil Uppal (Solid Waste Manager)

A look back

Resource recovery at Silverstream pre-2021

- Green waste:
 - used for cover material, not diverted or composted
 - Same price as general refuse
- Recovery facilities
 - Earthlink (bric-a-brac, used household goods, etc)
 - Metal recovery bins
 - Some cardboard bins
 - Basic hazardous waste drop off (unstaffed), annual haz waste collection day

Total diversion per year pre-2021: about 200-300t

Resource recovery at Silverstream before



whiteware

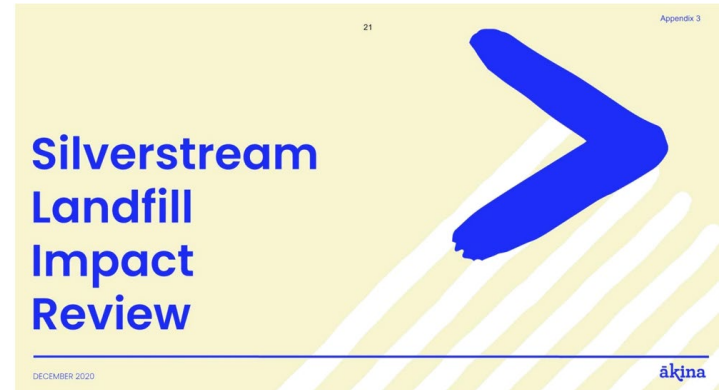


Metal / cardboard drop off



Development of an Impact Framework

- In late 2020, HCC commissioned Akina Foundation to develop an impact framework, to be clearer on what we are trying to achieve at the landfill.
- The report was shared with the HVSC at its meeting on 11 June 2021 (refer pages 14-87), and at a HCC briefing in April 2021
- In essence, instead of just focusing on disposal of waste, and deriving revenue from the landfill, a number of positive impacts can be achieved by increasing focus on resource recovery.
- Positive impacts include reduced environmental harm, increased local employment, and increased economic activity.



Changes to resource recovery at Silverstream since July 2021

Green waste



Hazardous waste



Change to load out direction



new roundabout

Pit filled and bin consolidation



Pit removed



Metal, whiteware, cardboard drop off

Pay by weight



Resource recovery at Silverstream now

- Green waste:
 - Now goes to Composting NZ
 - Significant price differential to general refuse (\$126/t vs \$190/t)
- Pay by weight incentivises some diversion prior to going to the landfill
- Recovery facilities
 - Earthlink (bric-a-brac, used household goods, etc)
 - Metal recovery bins
 - Some cardboard bins
 - Hazardous waste drop off (staffed, more product separation)

Total diversion per year: about 2,300t

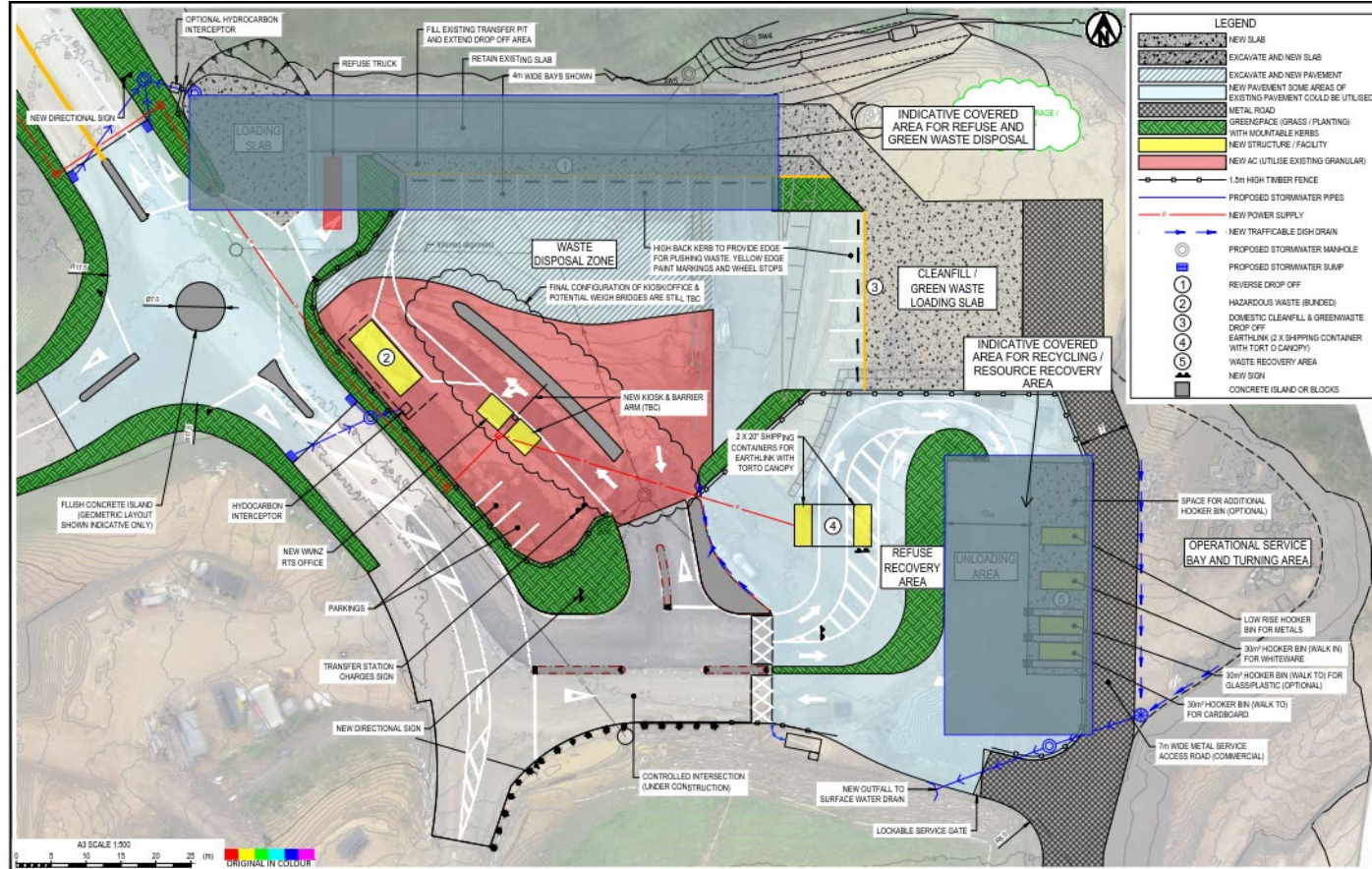
Resource recovery at Silverstream now



Future plans

- HCC currently finalising the procurement of the next landfill operations and transfer station contract
- Plans for a significant upgrade, to improve traffic flow & layout, and to consider moving into the recovery of commercial waste (eg C&D)
- BUT:
 - Still limited space (likely insufficient for commercial C&D recovery), but could start moving toward that
 - Cannot implement a “free” drop off area prior to the landfill gates, so would have to create a work-around
 - Still subject to completion of a business case (need to consider the potential of a private party implementing a state of the art facility elsewhere in the Hutt Valley, to avoid duplicating effort)

Further improvements at Silverstream?



A state of the art Resource Recovery Park?

- A new resource recovery park elsewhere in the Hutt Valley could be custom-designed
 - free drop off area before a paid area
 - more logical layout aligned with customer journey
 - Partially or fully covered, to reduce litter and protect materials collected
 - On-site recovery shop
 - On-site commercial and construction & demolition waste recovery (plasterboard, wood, concrete, etc)
- But would likely require private investor



Thank you