

Coordinated Urban Renewal Programme

For Lower Hutt

Update to Councillors July 12 2023

INTRODUCTION

Greetings and acknowledgments

PURPOSE

Providing an update on work in the urban renewal space

What we will cover today:

- a. Why a coordinated urban development programme?
- b. What is Urban Renewal?
- c. Where are we up to?
- d. What next?



Overview of today's session

- a. **Why a Coordinated Urban Development Programme?**
- b. What is Urban Renewal
- c. Where are we up to
- d. What next



As kaitiaki of our city, we have an obligation to be the voice for Te Awa Kairangi as our city grows and changes.

Why are towns & cities renewing themselves?

“a connected, resilient and inclusive city where all of our people thrive” (draft 2024 LTP).

- Future-fit infrastructure
- Enabling liveable cities & vibrant neighbourhoods
- Support & enhance the natural environment



THE NATIONAL AND REGIONAL ENVIRONMENTS ARE CHANGING.

Local government wellbeing priorities

Social, cultural, economic, environmental.

National and regional urban development direction

E.g. GPS-HUD, Regional Growth Strategy

Long term plan priorities

Planning and regulatory requirements

E.g. RMA, NPS-UD

Council strategies and plans

Govt + Govt agency priorities

E.g. Kāinga Ora Programmes

Infrastructure programme outcomes

E.g. IAF intensification, RiverLink

COORDINATED URBAN RENEWAL PROGRAMME



The Coordinated Urban Renewal Programme will deliver on the direction provided in existing strategies and national policy.

Hutt City Strategies:

- IAF Valley Floor Intensification
- Economic Development Plan 2015 – 2020
- Environmental Sustainability Strategic Implementation Plan
- Environmental Sustainability Strategy 2015 – 2045
- Go outside and play 2012
- Homelessness Strategy
- Integrated Transport Strategy
- Leisure and Wellbeing Strategy
- Long Term Integrated Community Facilities Plan 2015
- Reserves Strategy 2016 – 2026
- Seaview and Gracefield Vision 2030
- Transport Procurement Strategy – Hutt Valley 2020
- Urban Growth Strategy 2014
- Walk and Cycle Strategy 2014 – 2019
- City Centre Transformation Plan
- Long Term Plan
- Cycling and Micromobility business case
- District Plan

National directives / strategies:

- GPS-HUD
- NPS-UD
- RMA reforms
- Emissions Reduction Plan
- Infrastructure Strategy
- Local Govt Act
- Wellbeing Agenda

Regional strategies:

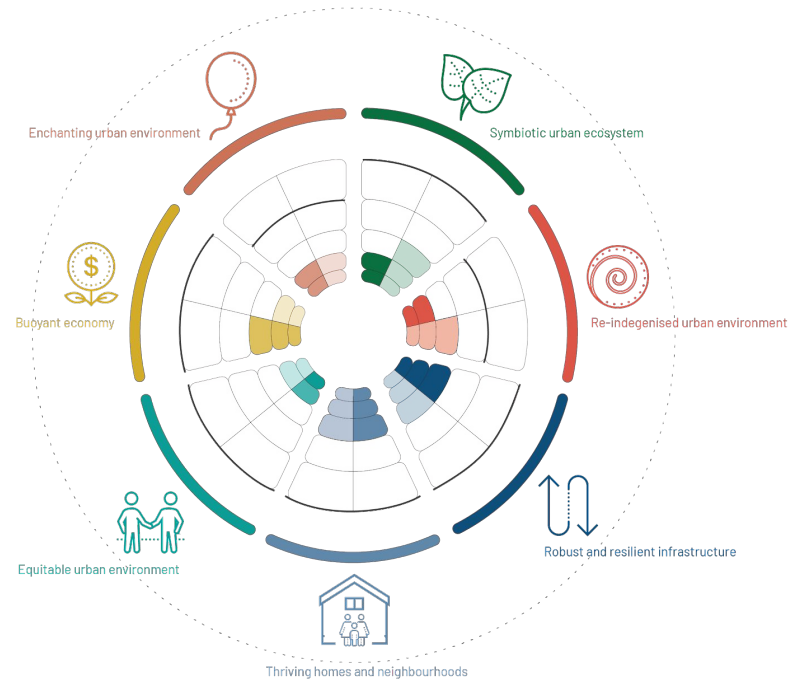
- Hutt Central CDO
- Waterloo CDO
- Wellington Regional Growth Framework [WRLC]
- Wellington FDS [WRLC]
- Regional Housing Action Plan [WRLC]
- West-East Access [WRLC]
- Hutt City Spatial Plan [WRLC]
- Pathways to Papakāinga (???) [WRLC]
- GWRC Economic Development Plan

Also... Kāinga Ora, MOE, Waka Kotahi, Kiwirail, MSD etc

OUR URBAN FABRIC COULD PERFORM BETTER



We know we can do better so our residents live in a well-connected, resilient, and thriving city.

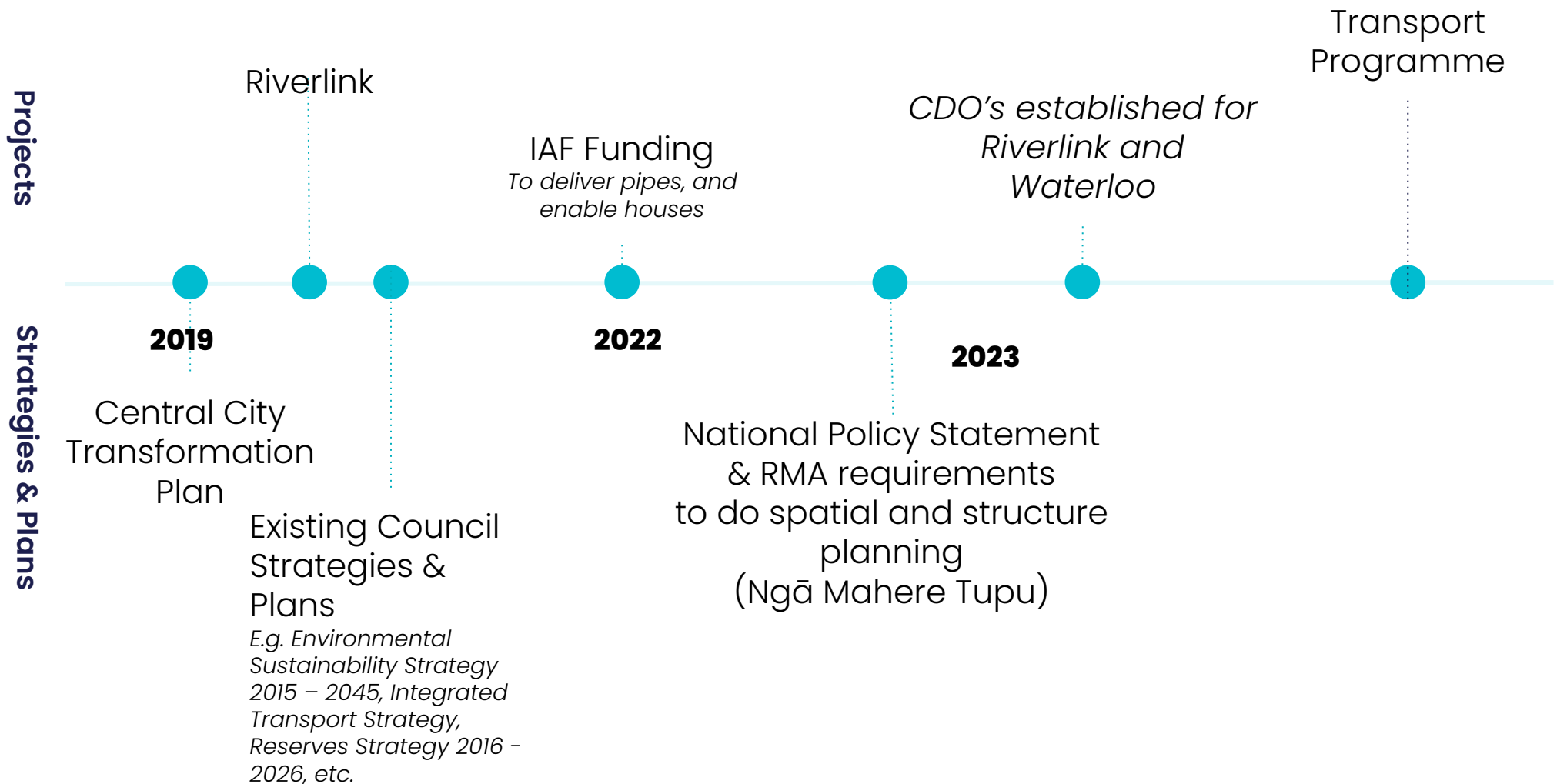


LOW PERFORMANCE
Compromised outcomes

The impact of low performance...

- **A shortfall of almost 8,000 homes by 2051.**
- A quarter of renter households are spending **more than 40%** of their income on housing.
- To afford the median rent in Lower Hutt, a household requires income **over \$100,000** – the median household income in Lower Hutt is **\$82,200.**
- To afford to purchase the median house in Lower Hutt, the household income needs to be **almost \$200,000!**

A COORDINATED APPROACH



IMPACT AND BENEFITS:

- More homes in the city centre area and near key transport hubs
- Increased housing choice & more affordable housing options
- Māori better represented in the urban environment
- Increased property values & more businesses/enterprise
- A more visible and healthy natural environment
- More resilient and future-fit infrastructure
- Increased property values & economic growth
- People spending more time in the city, enjoying it

We are here:

- a. Why CURP
- b. What is Urban Renewal**
- c. Where are we up to
- d. What next



WHAT IS URBAN RENEWAL?

The Urban Development Continuum

Intensification

Public + private sector development in line with planning for projected population growth.

Uses existing policy + planning frameworks.

Citizens are consulted in line with legislation.

FOCUS ON PHYSICAL OUTCOMES

Renewal

Public + private sector large-scale provision + replacement of housing, infrastructure + amenities.

Uses existing policy + planning frameworks.

Citizens are consulted and engaged.

Regeneration

Public, private + community sectors coordinate to deliver housing, infrastructure, amenities + services to transform social, cultural, environmental + economic outcomes.

Often needs new policy + planning frameworks.

Citizens are empowered as part of the process.

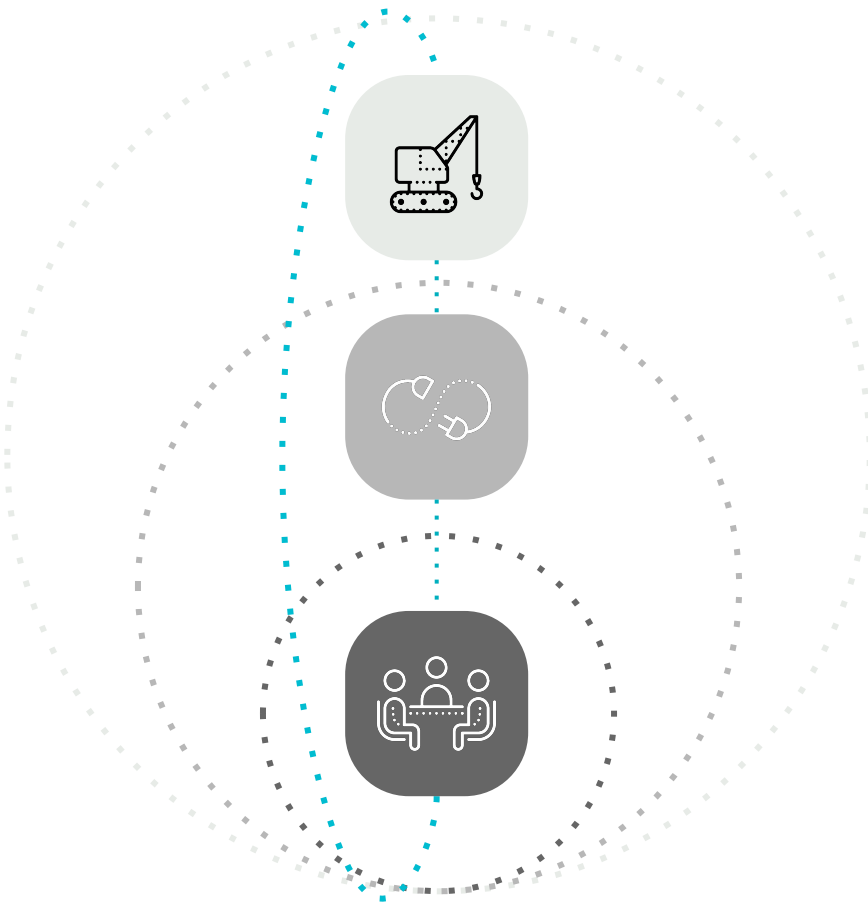
FOCUS ON WELLBEING OUTCOMES

The programme is connecting aspirations from mana whenua, the public sector, private sector, third sector and the community.

*"Centre for Cities estimates that **for every public sector pound contributed, £5 of private sector investment can be unlocked.**"*

Source: Centre For Cities - Levelling up regeneration schemes need significant public funding. Report Dated 11 Oct 2022

Making space for our partners to play a role



DELIVERY

- Builders and sellers of houses
- Providers of social services
- Business owners and residents

COMMUNITY ENABLERS

- Delivery and build of infrastructure
- Investors
- Community groups and advocates

LEADERSHIP

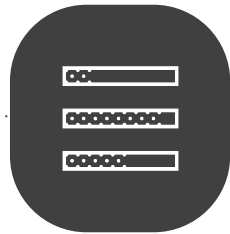
- Central government agencies
- Boards of local institutions (e.g. kura, charities).
- Business associations / BIDs



Hutt City Council is responsible for playing various roles to support good urban development in our city.



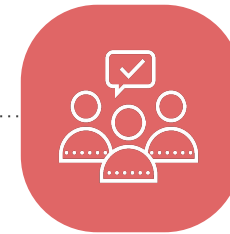
**PROJECT
DELIVERY**



REGULATOR



**ENABLER /
INCENTIVISER:**



LEADERSHIP



URBAN RENEWAL: BEST PRACTICE

- Leadership and vision
- Active communication & engagement (community & market)
- Integration and sustainability
- Clear goals and objectives
- A holistic approach
- Long-term spatial planning and implementation
- Partnership and collaboration
- Flexibility and adaptability
- Problem solving



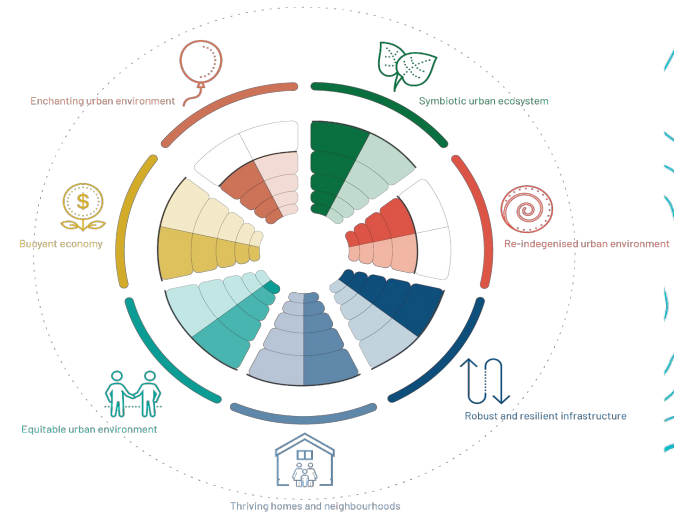
ALIGNMENT 2024-2034 LTP

What we do

		Provide 'future-fit' infrastructure	Enabling a liveable city and vibrant neighbourhoods	Support and enhance the environment
How we do it	In partnership	<p>Elements of the LTP need to align to this matrix. For example: wellbeing outcomes, KPIs or performance measures, activity areas, major projects, etc.</p>		
	With climate change in mind			
	Being financially sustainable			
Found ation	Promoting the wellbeing of all people			



Thriving



HOW DO WE DELIVER OUR HIGH-PERFORMING CITY?

Governance National, Regional, Territorial, and Mana Whenua

National plans, strategies and funding

Wellington Region plans and strategies

Hutt City plans and strategies

Spatial Strategy *Articulating a coordinated vision for Hutt City's Development*

Housing & Urban Development Delivery Action Plan/coordinated work programme

Stakeholders

IAF delivery alliance

Waterloo CDO

Riverlink CDO

TBC

Hutt City Urban Renewal Steering Group
Supported by internal HCC urban development team



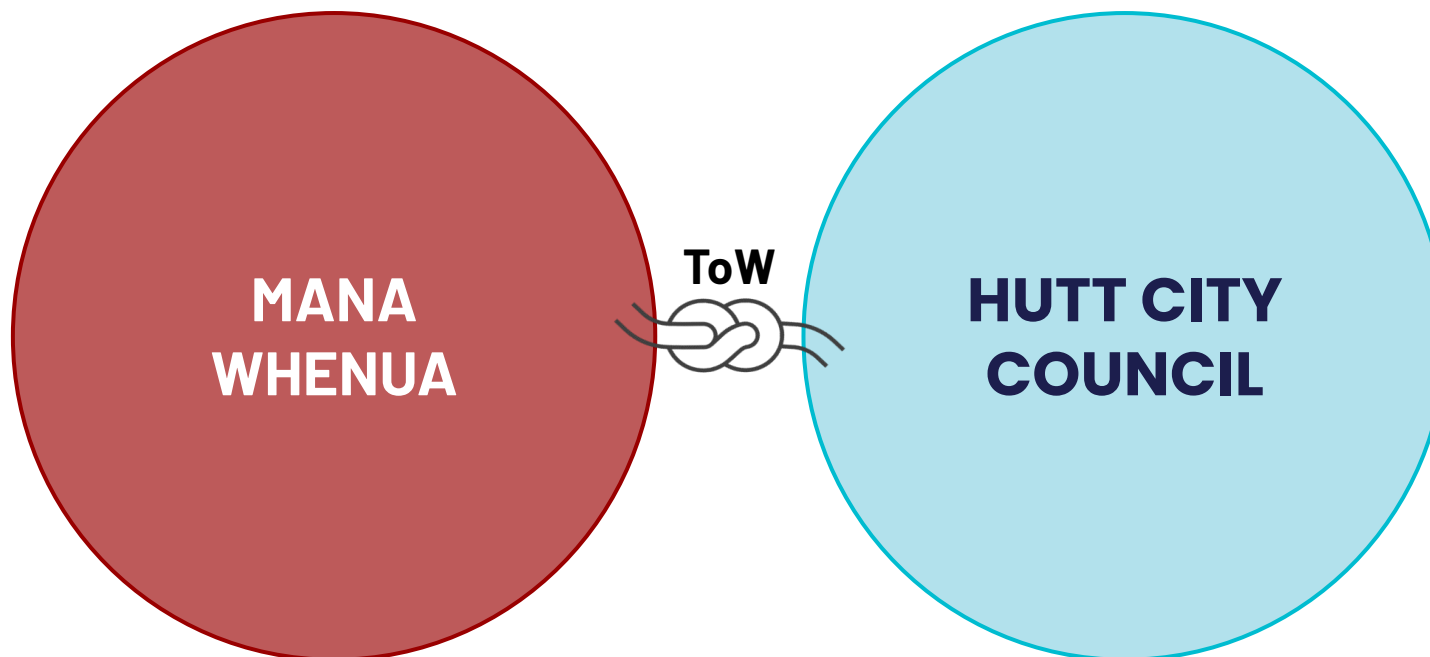
We are here:

- a. Why CURP
- b. What is Urban Renewal
- c. Where are we up to**
- d. What next



MANA WHENUA PARTNERSHIP

- Engage with mana whenua as the first step to determine how to partner in delivery of the Urban Renewal Programme.
- Mana whenua, and representative entities involved in the Coordinated Urban Renewal Programme.



HOW WE CREATE THE COORDINATED URBAN RENEWAL PROGRAMME

STEP 1:

Agree a shared vision for the city.

STEP 2:

Develop a common set of objectives and outcomes that can be easily measured and monitored.

STEP 3:

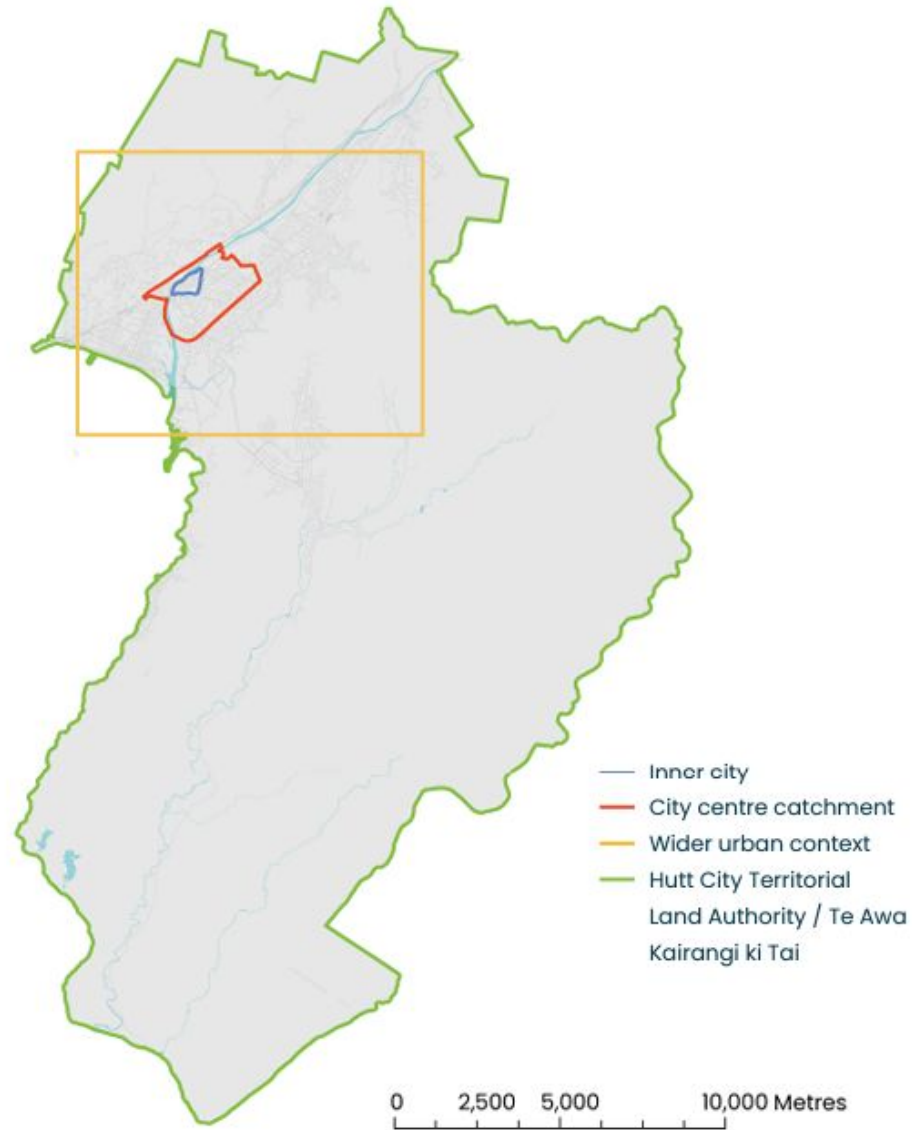
Provide strategic leadership, that drives best-for-city decision making and action.

STEP 4:

Create an environment of trust, certainty and confidence for others to act within.



PROGRAMME AREA



PROGRAMME AREA

Urban Design Analysis of
City Centre Catchment

Map Identified Projects, Plans and Strategies

April 2023

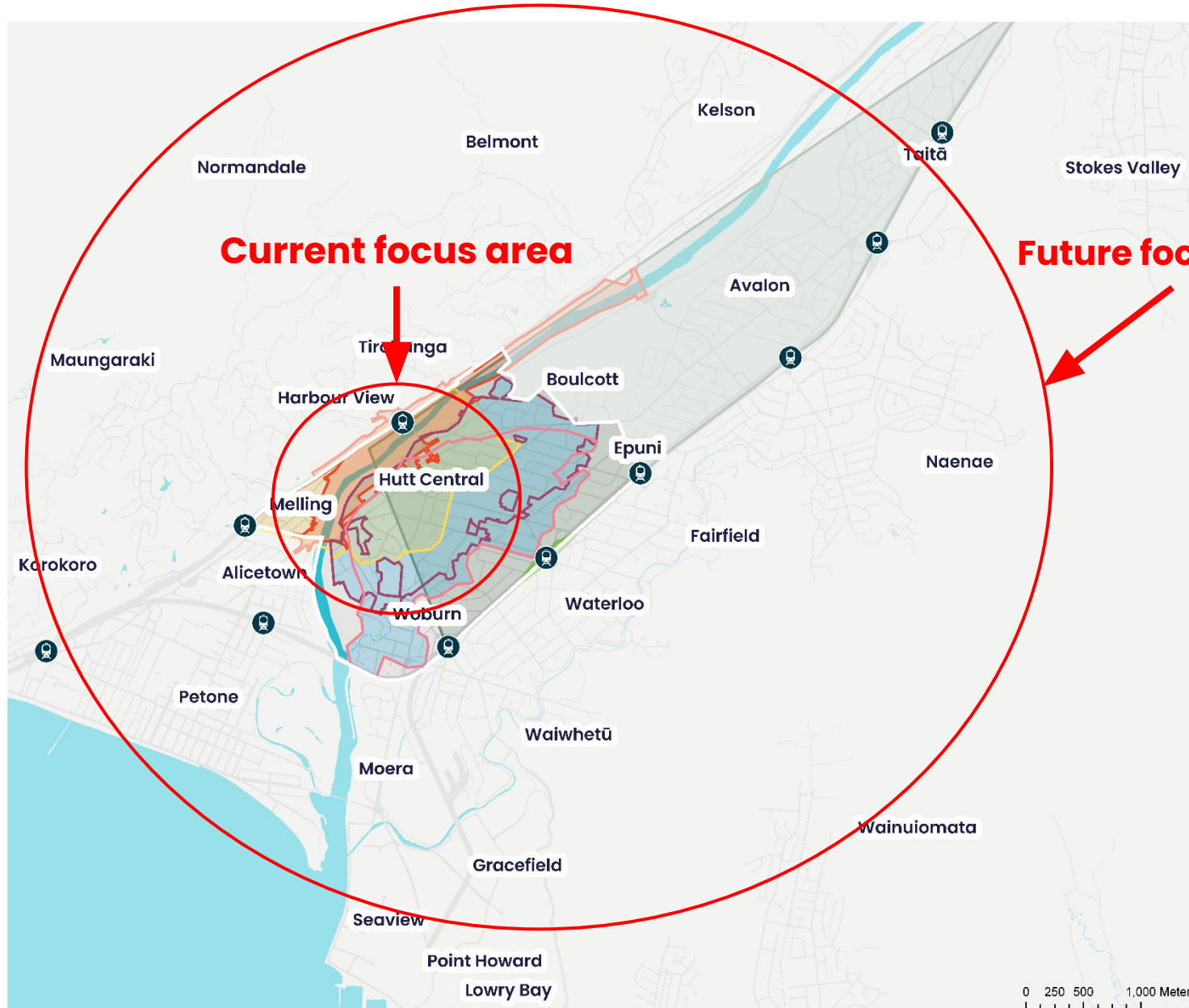
Legend

- Buildings
- Roads and Railways
- Water
- Train Station
- City Centre Catchment
- City Centre
- Transformation Plan
- CDO Waterloo
- CDO Lower Hutt Central
- IAF Stormwater
- IAF Wastewater
- RiverLink
- Wellington Regional Growth Framework

Data Source

CCTP_Study_Area.shp
CDO_waterloo
CDOlowerhuttcentralarea
Riverlink boundary_1

Cartography produced by HCC Urban Design Team



OUR VISION FOR THE CENTRAL CITY

An attractive, vibrant and liveable centre
that embraces change through promoting new business,
housing, recreation and enterprise opportunities
(CCTP 2019)

**To be further
developed
through
spatial
planning
workstream**



KEY ACTIVITIES OF THE COORDINATED URBAN RENEWAL PROGRAMME:

- Spatial planning & design (Ngā Mahere Tupu)
- Outcomes, monitoring and evaluation
- Strategic use of land and property
- Exploring funding opportunities (DC's/FC's/central government and private sector)
- Communication & Engagement
- Infrastructure delivery (IAF)
- Major project delivery (RiverLink / Te Wai Takamori o Te Awa Kairangi, CDOs such as Waterloo TOD and City Centre)
- Culture & Heritage initiatives (TBD)
- Placemaking

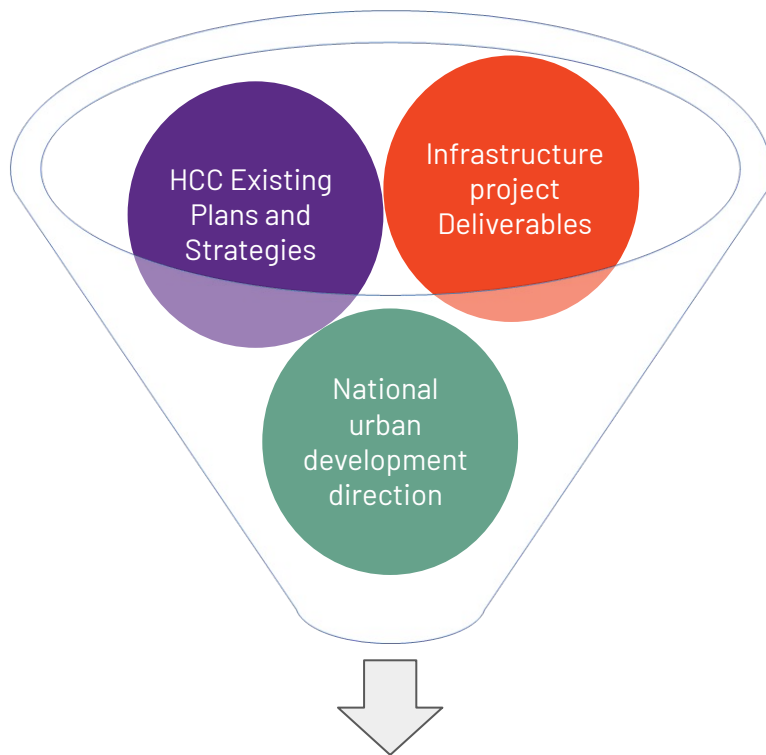


We are here:

- a. Why CURP
- b. What is Urban Renewal
- c. Where are we up to
- d. What next ?**



DRAFT OBJECTIVES OF THE URBAN RENEWAL PROGRAMME



PROGRAMME GOALS AND OBJECTIVES

Objective 1: More and diverse types of housing close to amenities, mutually supporting resilient and local economies.

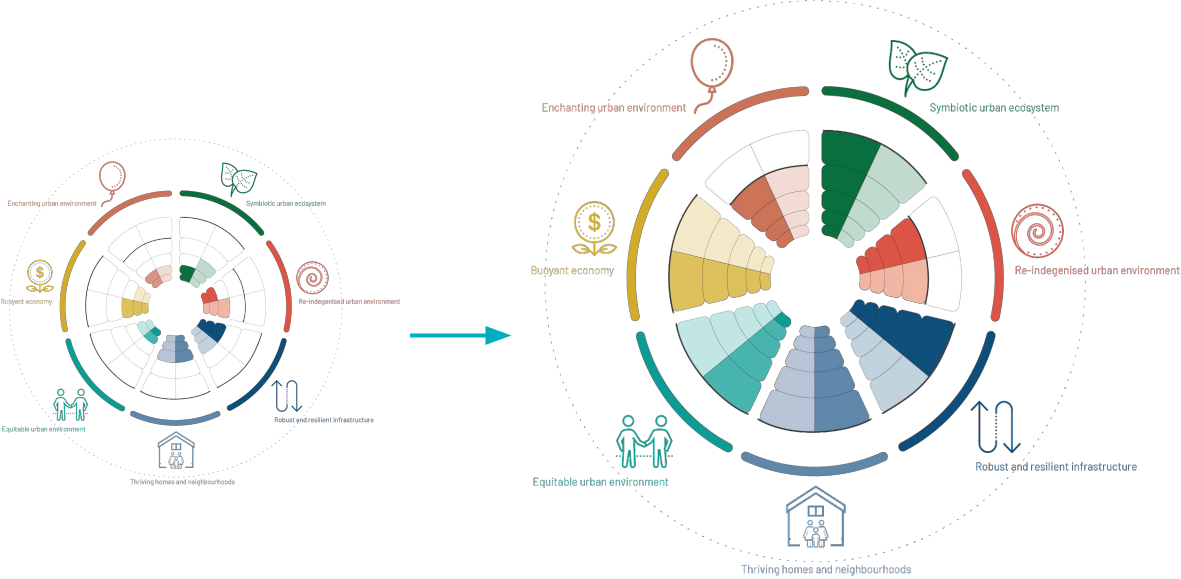
Objective 2: Re-indigenised and future fit City Centre with reduced carbon emissions.

Objective 3: Robust and resilient infrastructure that supports the mauri of Te Awa Kairangi and communities.

Draft

GOALS & TARGETS

Our aim is to become a “high performing urban fabric” where our outcomes are met or exceeded, and our residents are thriving.



LOW PERFORMANCE
Compromised outcomes

HIGH PERFORMANCE
Meeting outcomes



DRAFT URBAN RENEWAL OUTCOMES

Aligned with analysis from Ngā Māhere Tupu kaupapa

- 1.** Symbiotic Urban Ecosystem
- 2.** A re-indigenised urban environment
- 3.** Robust and resilient infrastructure
- 4.** Thriving homes and neighbourhoods
- 5.** Equitable urban environment
- 6.** Buoyant economy
- 7.** Enchanting urban environments

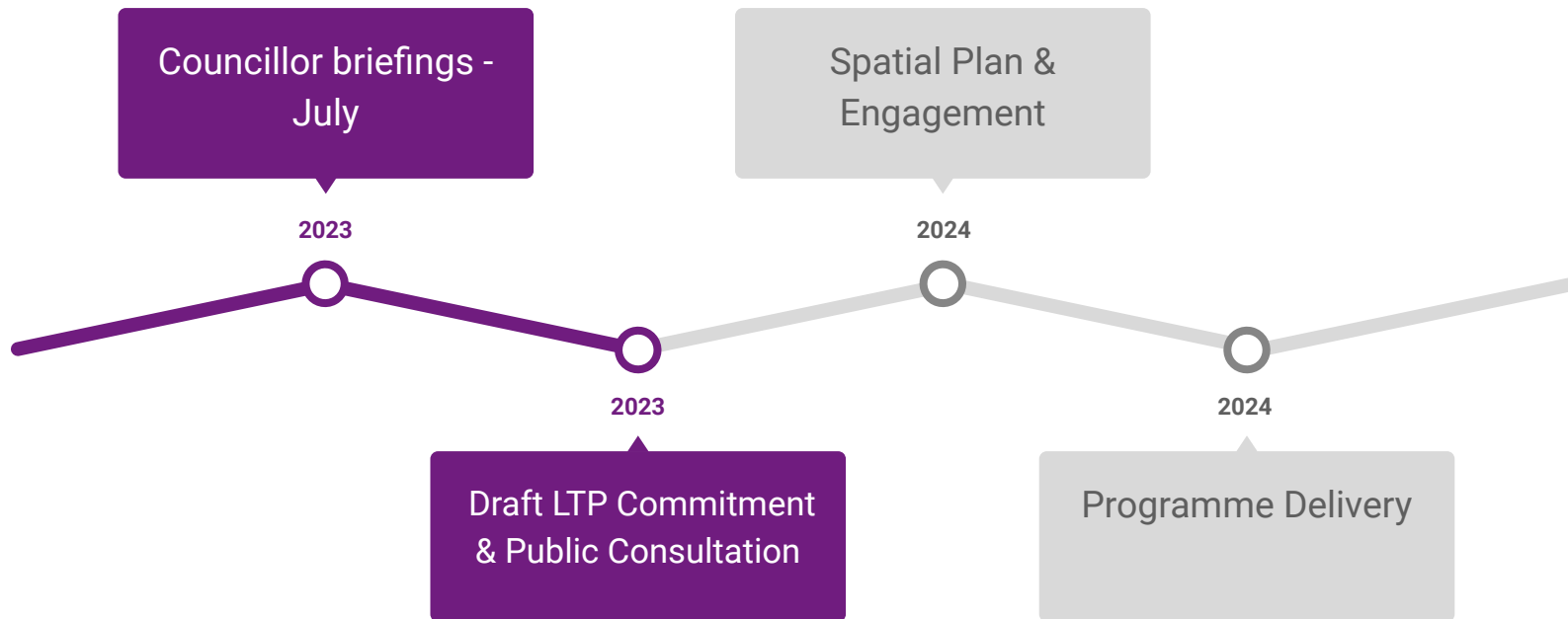


**Engagement
will be critical.**

**INDICATIVE
DRAFT ONLY**



SEQUENCE THROUGH COUNCIL PROCESSES



Some more information about Riverlink By Tom Biggin



Te Awa Kairangi

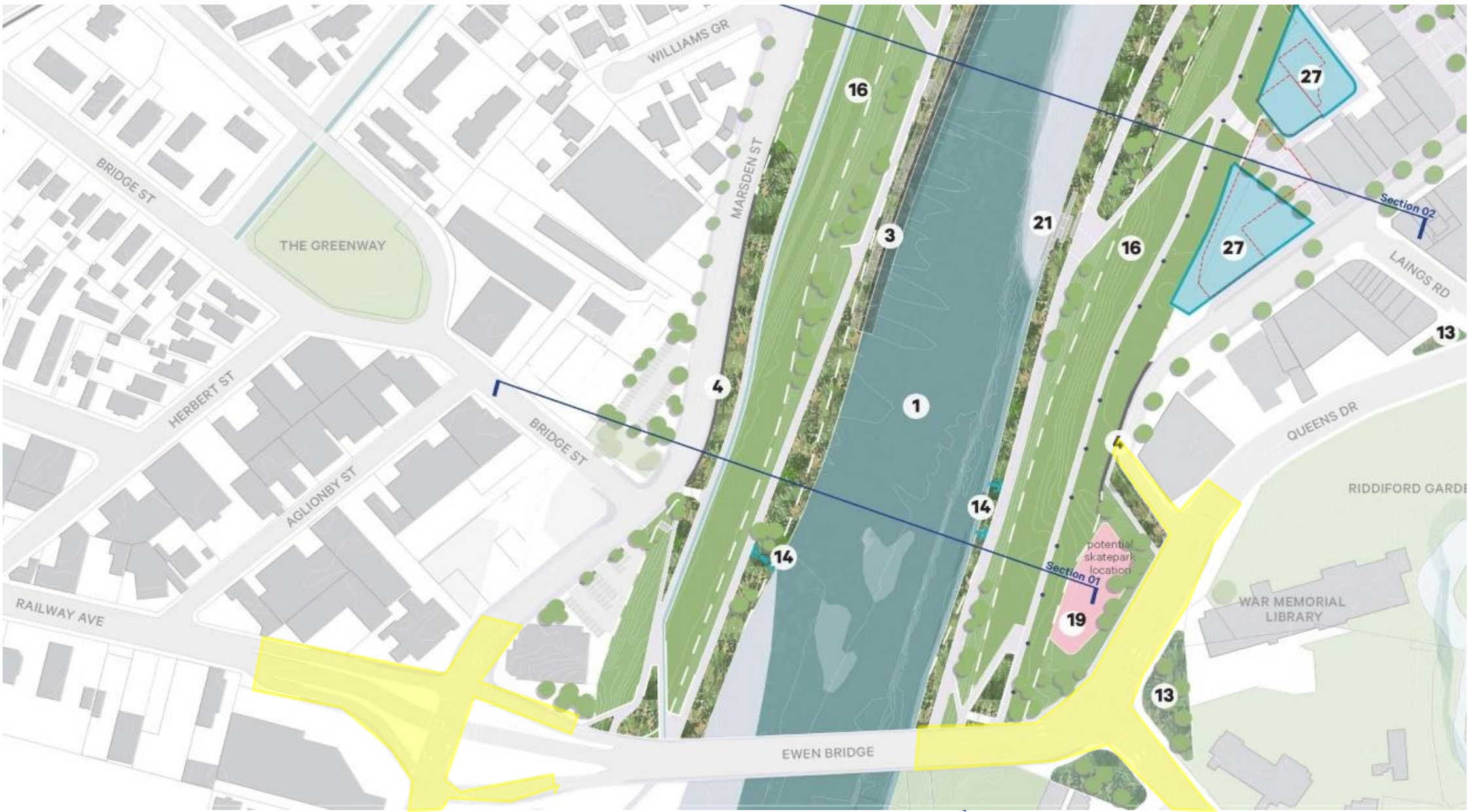
our land | our river | our future



Hutt City Council Scope

1. Intersection improvements
2. Streetscapes
3. Pedestrian/cycle Bridge
4. Riverbank Park
5. Riverbank carpark
6. Development opportunities

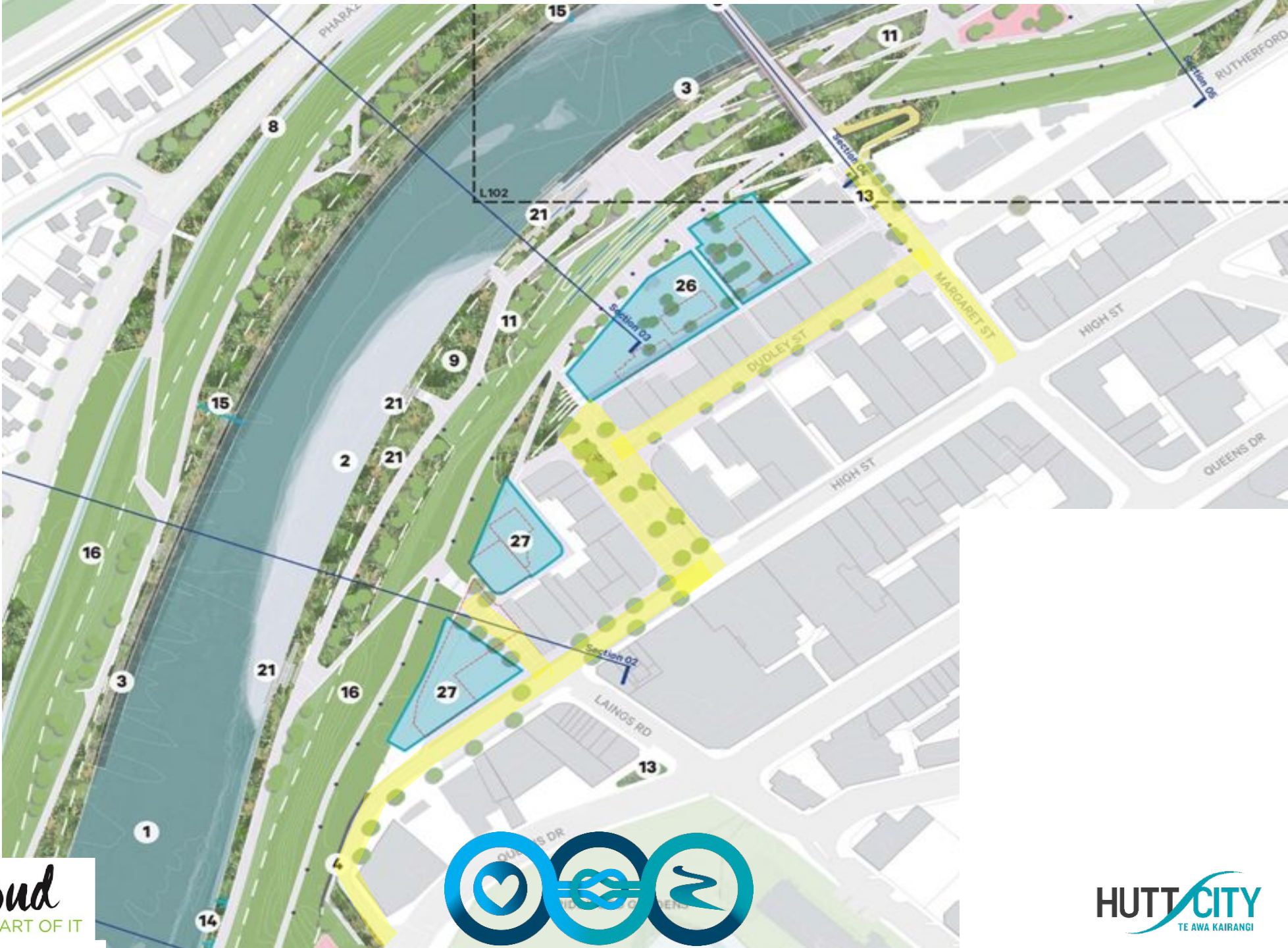
1. INTERSECTION IMPROVEMENTS



1. INTERSECTION IMPROVEMENTS



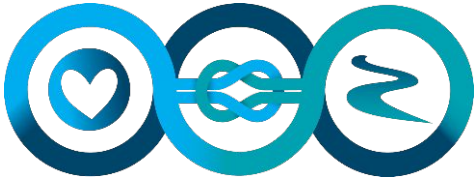
2. STREETScape IMPROVEMENTS



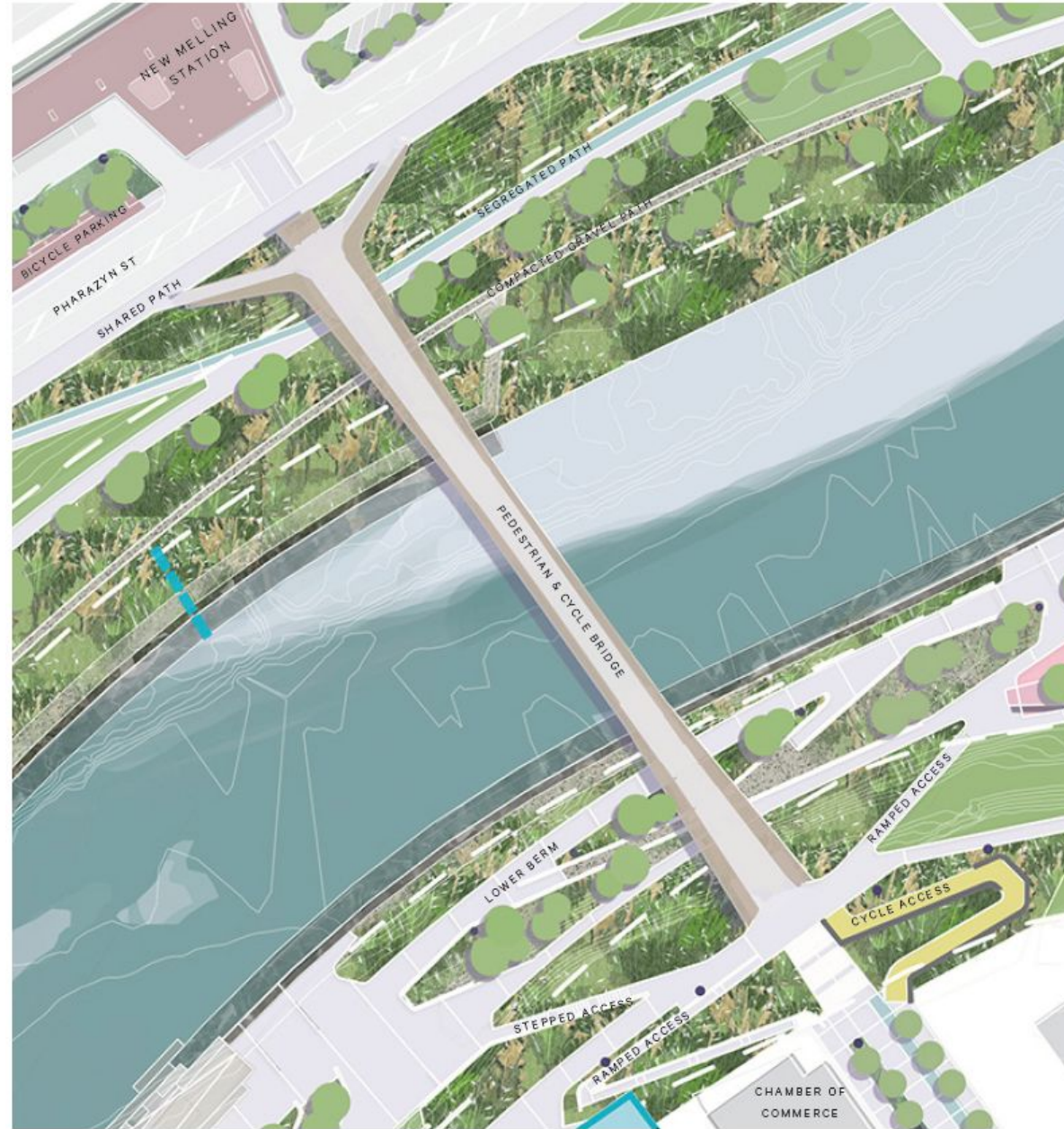
Streetscape improvements examples



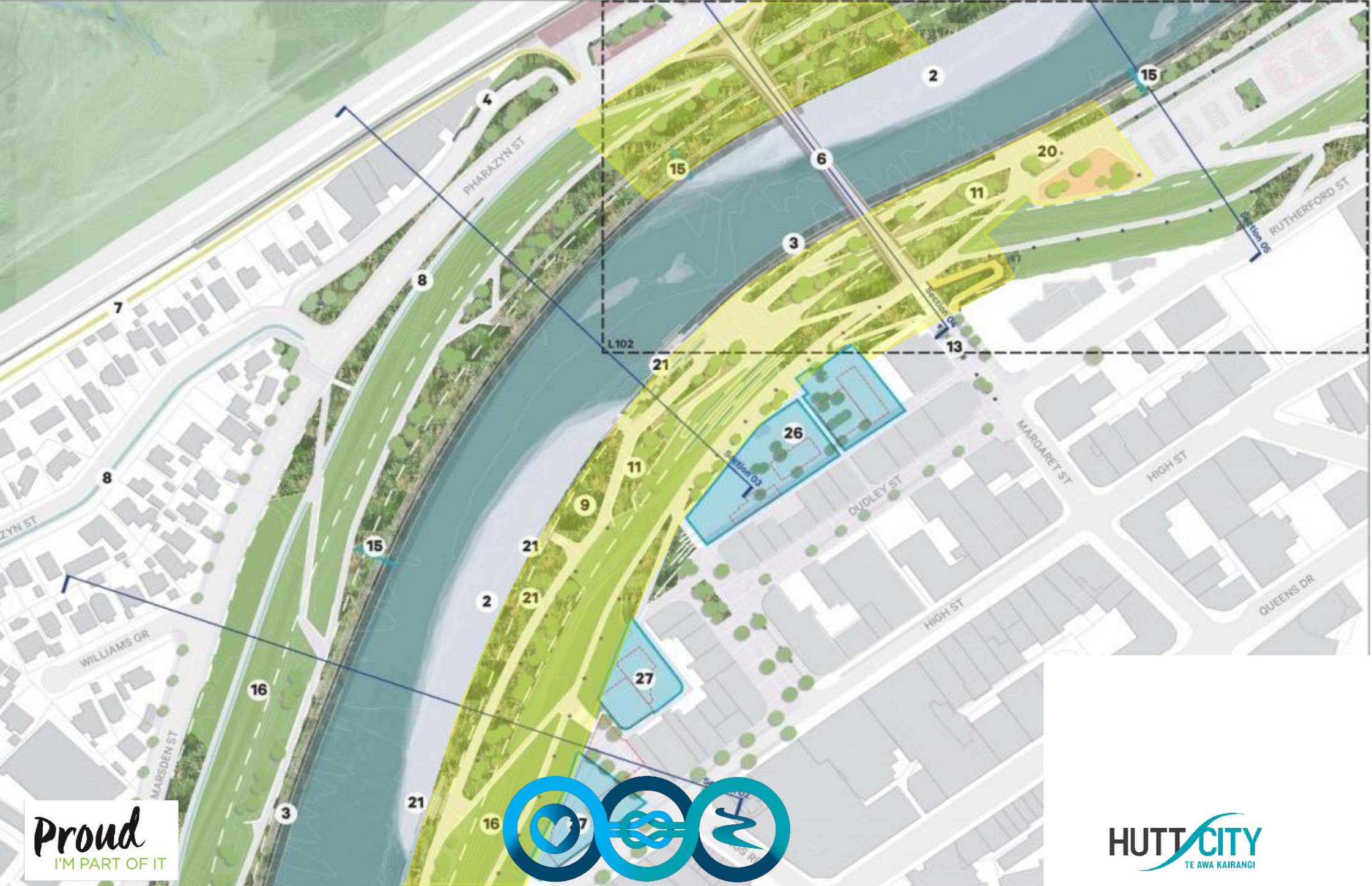
- Use & Activation.**
1. Outdoor dining in Melbourne's narrow pedestrian laneways.
 2. Street-based night market.
 3. Innovating streets - eat street temporary public space transformation.
 4. Busking and performance.
 5. Public art providing wayfinding and character to pedestrian laneway.
 6. Food truck market creating a destination urban street-based event.



3. PEDESTRIAN/CYCLE BRIDGE



4. RIVERBANK PARK



Proud
I'M PART OF IT



HUTT CITY
TE AWA KAIRANGI

4. RIVERBANK PARK



Proud
I'M PART OF IT



HUTT CITY
TE AWA KAIRANGI

4. RIVERBANK PARK





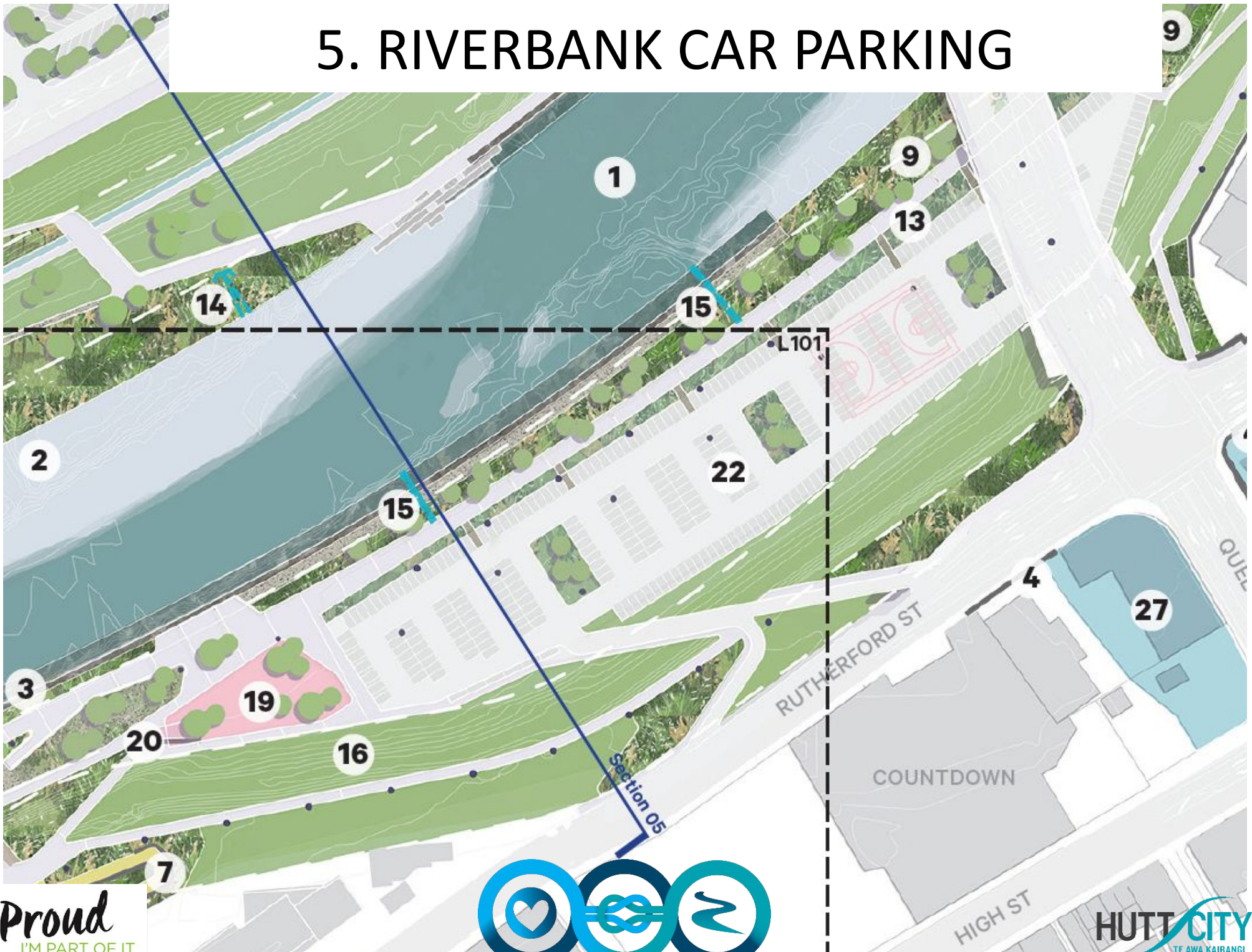
Stair & ramp access.

1. Civic scale stair access connecting city and river.
2. Smaller scale stair connection.
3. Informal access down stopbank riverside.
4. Legible and direct ramped access to city side of stopbank for cycle, pedestrian and mobility access.
5. Simply detailed, ramped access from top of stopbank to river corridor.
6. Ramped access integrated into wider landscape and amenity.

Access.

7. Legible, clear and direct access.
8. Integration of access and play.

5. RIVERBANK CAR PARKING



6. DEVELOPMENT OPPORTUNITIES



6. DEVELOPMENT OPPORTUNITIES



6. DEVELOPMENT OPPORTUNITIES



Proud
I'M PART OF IT



HUTT CITY
TE AWA KAIRANGI

IN SUMMARY:

- It is important that council **takes a leadership role** in setting the direction and coordinating all the different players involved.
- There are lots of ways that HCC can **influence, enable, deliver,** and control what happens in the city – this programme ensures we are doing this in cohesive ways.

NEXT STEPS

- Further korero with you on July 25 objectives and goals.

The programme takes all of us on the journey to define a shared vision for the city.

Elected representatives of our communities play an essential role in driving the vision forward.



END
Thank you for your time.

Programme Sponsor: **Kara Puketapu-Dentice**

Programme Manager: **Richard Barton**