

**Te Awa Kairangi ki Tai Lower Hutt**

# **Spatial Plan**

---

**Sustainable Growth Strategy 2025–2055**

Councillors briefing – 12 June 2024

## The purpose of the Spatial Plan is to:

- Provide strategic direction for Lower Hutt's urban development and growth over the next 30 years.
- Bring together strategic planning for land use, transport, three-waters infrastructure, community facilities, parks & open spaces, climate adaptation and business & economy into a single document.
- Identify an integrated plan of action to accommodate population growth.
- Identify improvements in existing neighbourhoods to address deficits and align levels of service across our communities.
- Update and replace the **Urban Growth Strategy 2012-32**.

## **Spatial Plan timeline**

### **July – District Plan Review Committee**

Approval of general direction

### **September – District Plan Review Committee**

Approval of draft document for community engagement

### **October – Council**

Approval of draft document for community engagement

### **October / November**

Community engagement

### **Early 2025 – Council**

Adoption of final document



## Community engagement

- Due to the close relationship between the District Plan and the Spatial Plan, we plan to engage on both documents together
- To avoid confusion, we will make sure the documents are clearly distinguishable
- We will work with Te Tira Māori on a Te Reo name for the Spatial Plan that reflects its focus on sustainable growth. This will further differentiate the two plans.



**Our population is expected to grow by around 40,000 people over the next 30 years.**

**We have to plan for how we will accommodate these new residents with more housing, more capacity in our transport and three-waters networks and other amenities such as reserves.**



## **Structure of the Spatial Plan**

- Chapter 1 – Introduction
- Chapter 2 – Lower Hutt today (our opportunities and challenges)
- Chapter 3 – Lower Hutt in 30 years (our growth strategy)
- Chapter 4 – Action Plan (what we need to do)



## **The Spatial Plan weaves together our existing strategies including:**

- Long Term Plan 2024-34
- Reserves Investment Strategy 2024
- Infrastructure Strategy 2024-2034
- Draft District Plan (2023)
- Housing and Business Capacity Assessment (2023)
- Integrated Transport Strategy (2022)
- Three Waters Growth Study (2022)
- Climate Action Pathway (2022)
- Central City Centre Transformation Plan (2019)

**into a single story of how we manage our growth sustainably**



**Long Term Plan**

**Purpose**

A connected, resilient and inclusive city where everyone thrives

**Principles**

Thriving neighbourhoods    Enhancing the environment    A future-fit city    Cultural recognition

**Spatial Plan**

**Outcomes**

Urban growth in suitable areas  
Thriving local centres  
Affordable housing  
Transport options

Compact urban footprint  
Mana Whenua as kaitiaki  
Healthy natural systems  
Resilient environment

Zero-carbon city  
Targeted infrastructure upgrades  
Diverse business environment

Mana Whenua history and identity  
Distinct neighbourhoods

**Strategic moves**

Enhance the heart of the city	Build up the central and northern Valley Floor	Grow with Te Awa Kairangi Hutt River	Foster prepared coastal and low-lying communities	Cultivate well-connected economic precincts	Support neighbourhoods outside the Valley Floor	Strengthen transport options	Create a greener and healthier city
-------------------------------	--	--------------------------------------	---	---	---	------------------------------	-------------------------------------

**Actions**

a, b, c, ...	a, b, c, ...	a, b, c, ...	a, b, c, ...	a, b, c, ...	a, b, c, ...	a, b, c, ...	a, b, c, ...
--------------	--------------	--------------	--------------	--------------	--------------	--------------	--------------





1

## Enhance the heart of the city

Revitalise the city centre to create a thriving neighbourhood and destination

**The central city is the area we most want to see growing for housing and businesses.**

### This strategic move involves:

- Supporting Te Wai Takamori o Te Awa Kairangi (**RiverLink**) programme, including relocated Melling train station, new pedestrian bridge connecting the station to the city centre, increased flood protection in Hutt Central, riverside park, streetscape improvements and new interchange at Melling + **urban development** near the river
- Delivering our **IAF three-waters** upgrades to support new development in Hutt Central
- Initiatives to support more **residents** to live in the city centre and **business** to locate in the city centre
- Physical improvements and activation to create vibrancy



2

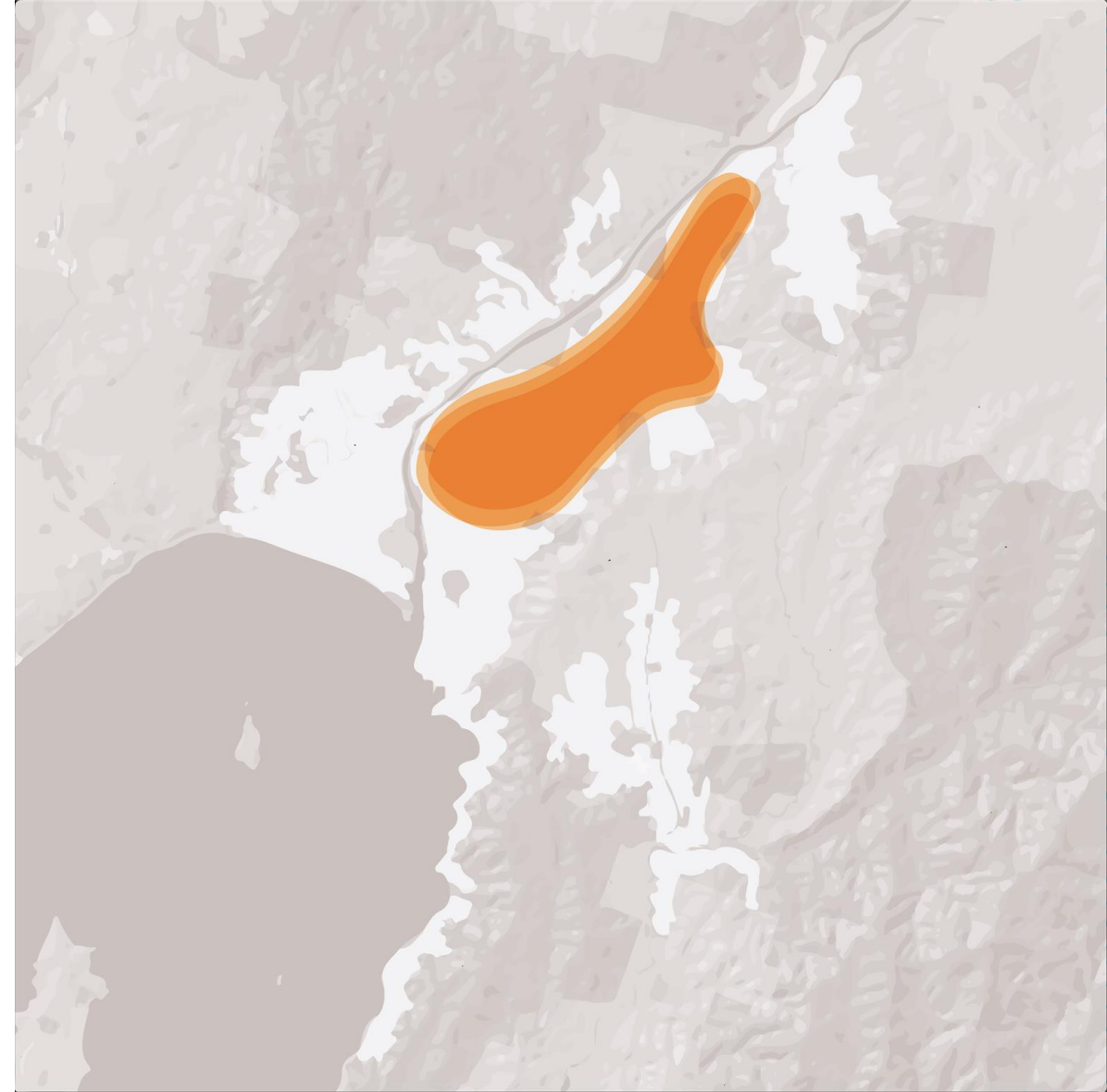
## Build up the central and northern Valley Floor

Concentrate new housing in the central and northern Valley Floor.

**The central and northern Valley Floor are resilient and best capable of being serviced by public transport and three-waters infrastructure to support growth.**

### This strategic move involves:

- Targeted investment in Valley Floor **three-waters infrastructure** (e.g. Eastern Hills Reservoir)
- Improving **public transport services, walking and cycling** access across the Valley Floor
- Supporting **Kāinga Ora** in their housing upgrades with a focus on **Naenae, Taitā and Avalon**
- Supporting **local centres**
- Improved local **parks and reserves**



3

## Grow with Te Awa Kairangi Hutt River

Enhance resilience, recreation and biodiversity along the river.

**Te Awa Kairangi Hutt River is a treasured natural feature of Lower Hutt.**

### This strategic move involves:

- Supporting the Te Wai Takamori o Te Awa Kairangi (**RiverLink**) project which involves raising the stopbanks to protect people and property; a new pedestrian bridge over the river and improving the connection between the city centre and the river
- Improving recreational **walking and cycling** along the river
- Improving **parks and reserves** adjacent to the river
- **Wetland** restoration and **riparian** improvements
- Working with mana whenua and GWRC to action **Te Whaitua** te Whanganui-a-Tara Implementation Programme



## 4

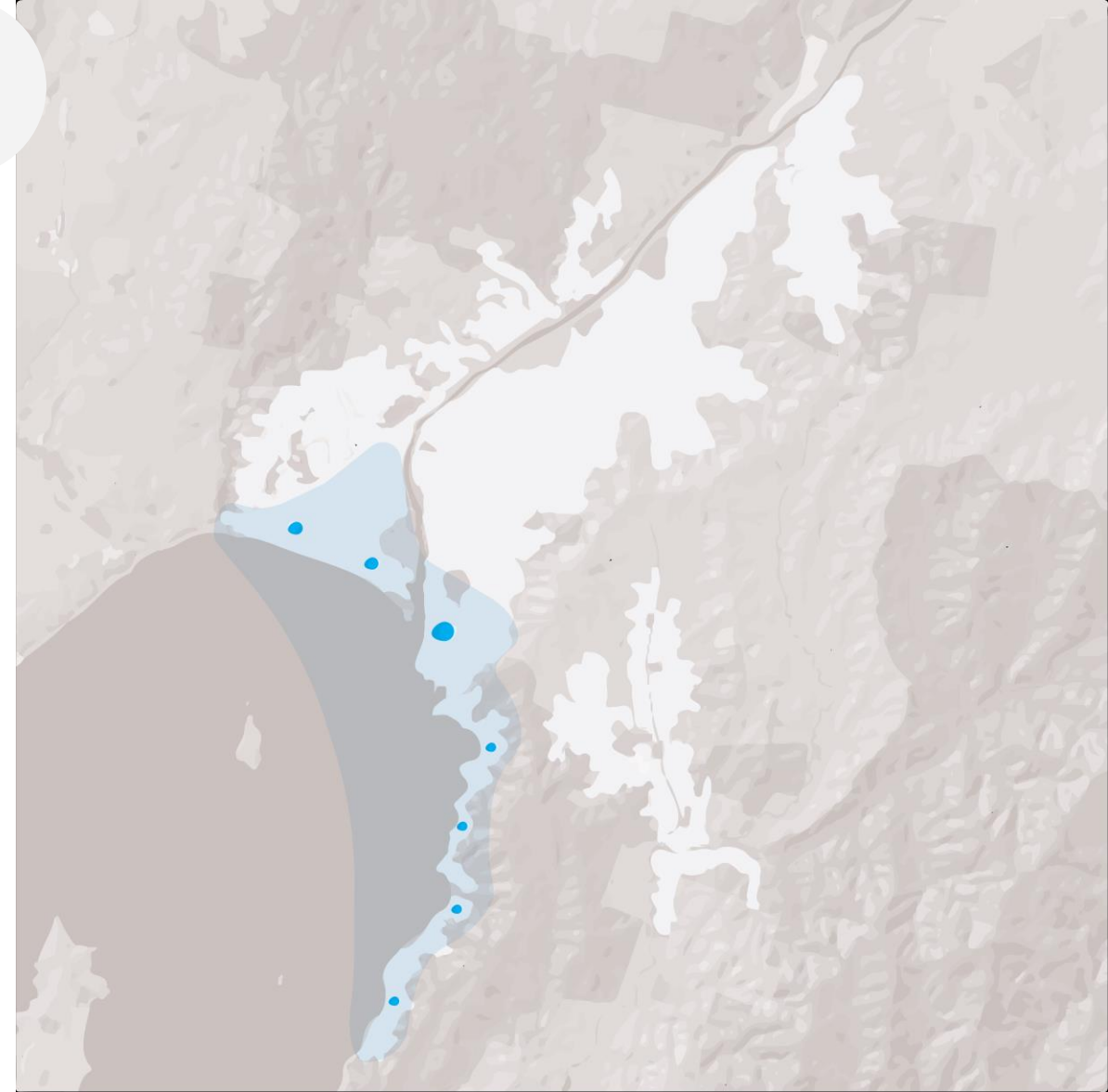
### Foster prepared coastal and low-lying communities

Recognise the risks of climate change and build community preparedness

**We need to start planning now for adapting to our changing climate.**

#### This strategic move involves:

- Developing an **Adaptation Plan** for Lower Hutt with mana whenua, businesses and residents – this will provide the next level of detail from the regional adaptation plan.
- Working with NZ Transport Agency Waka Kotahi on the **Cross Valley Link** project so it delivers transport and resilience benefits, including consideration of the future function of the **Petone Esplanade**
- Completing **Tupua Horo Nuku** and other shared paths
- Working with **Mana Whenua** to increase recognition of culturally significant sites in low-lying areas.
- Considering the resilience of our **business areas** in Seaview and Gracefield



5

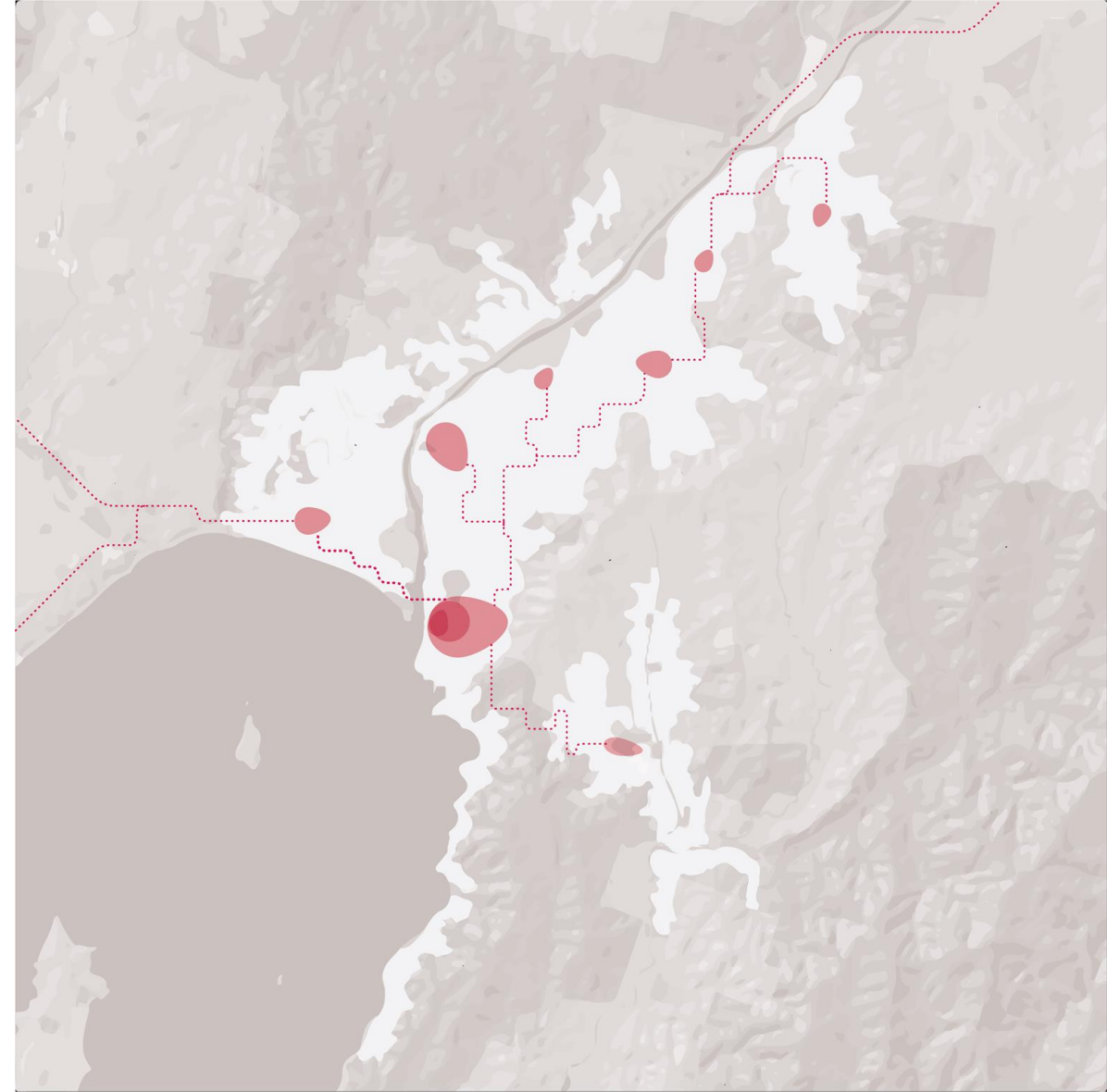
## Cultivate well-connected economic precincts

Improve access to and the resilience of employment areas

**Lower Hutt has been a key centre of industry for a century and will remain a strategically significant employment centre for the region.**

### This strategic move involves:

- Working with Waka Kotahi on the **Cross Valley Link** and **Petone to Grenada** projects to better connect our core employment areas to the State Highway network
- Working with Metlink to improve **public transport**, including links to Seaview, Gracefield and Wainuiomata. This could involve bus priority measures.
- **Public realm** improvements in business areas, including safer and more convenient pedestrian facilities and open spaces that workers can use



6

## Support neighbourhoods outside the Valley Floor

Sustain the access, character and services of neighbourhoods

**While we are not planning for significant residential growth outside the Valley Floor, we will continue to support each community so everyone has access to good services.**

### This strategic move involves:

- Working with Metlink to improve **public transport** services
- Addressing gaps in **open spaces, recreation and sports facilities**
- Improving **walking and cycling** access
- New approaches to deliver **community facilities**
- Improving **local centres**



7

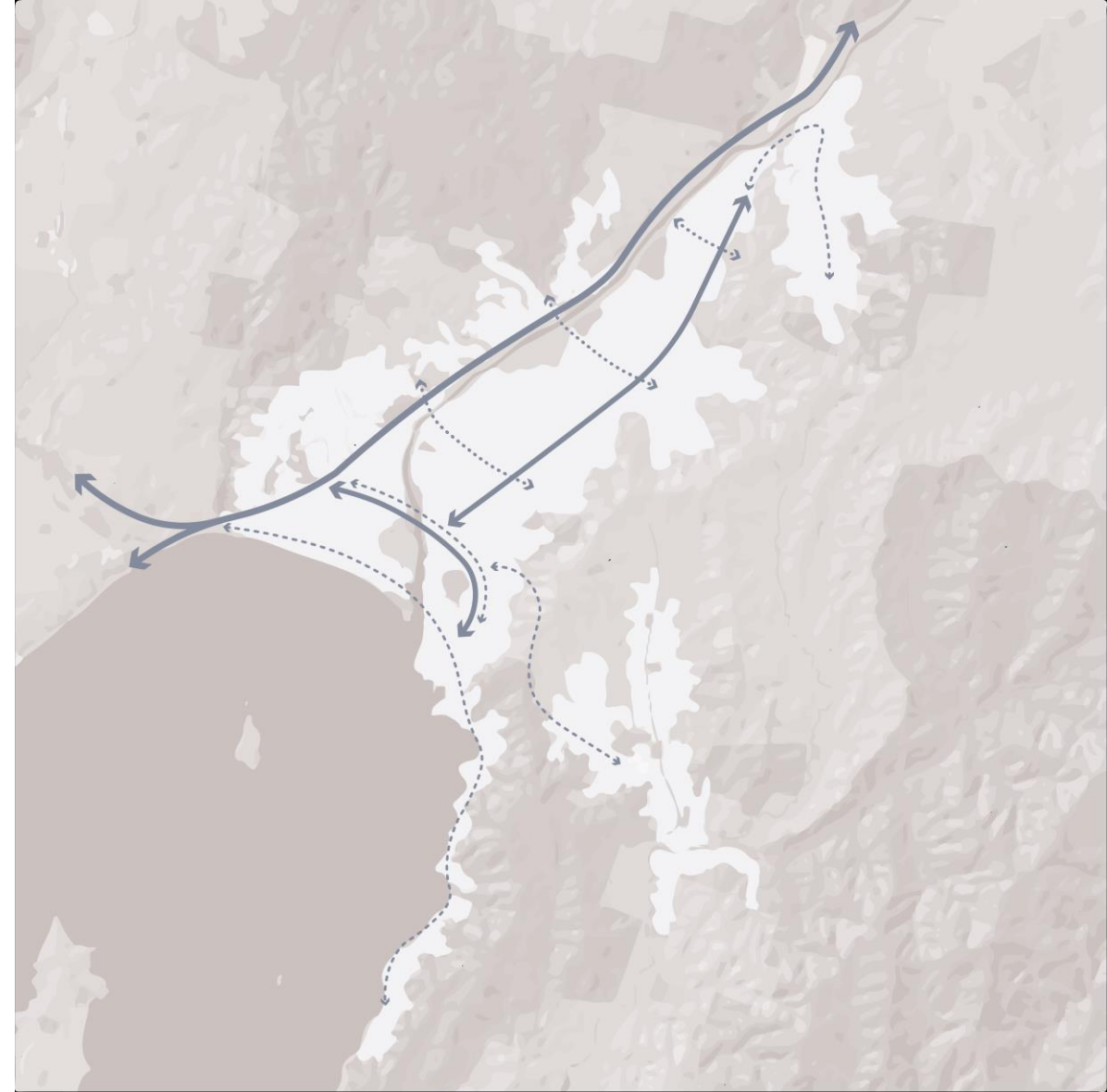
## Strengthen transport choices

Provide a variety of transport options that make it easy to get to and around the city

**Public transport, walking and cycling all need to be improved so residents have options other than driving a private vehicle.**

### This strategic move involves:

- Working with Metlink to improve **public transport** services and **train stations**
- Closing gaps in the **cycle network**
- Providing better **pedestrian** infrastructure, safe crossing and wayfinding
- Implementing our **Parking Strategy**
- Working with Waka Kotahi on the **Cross Valley Link** and **Petone to Grenada** projects to provide better freight routes away from local streets



8

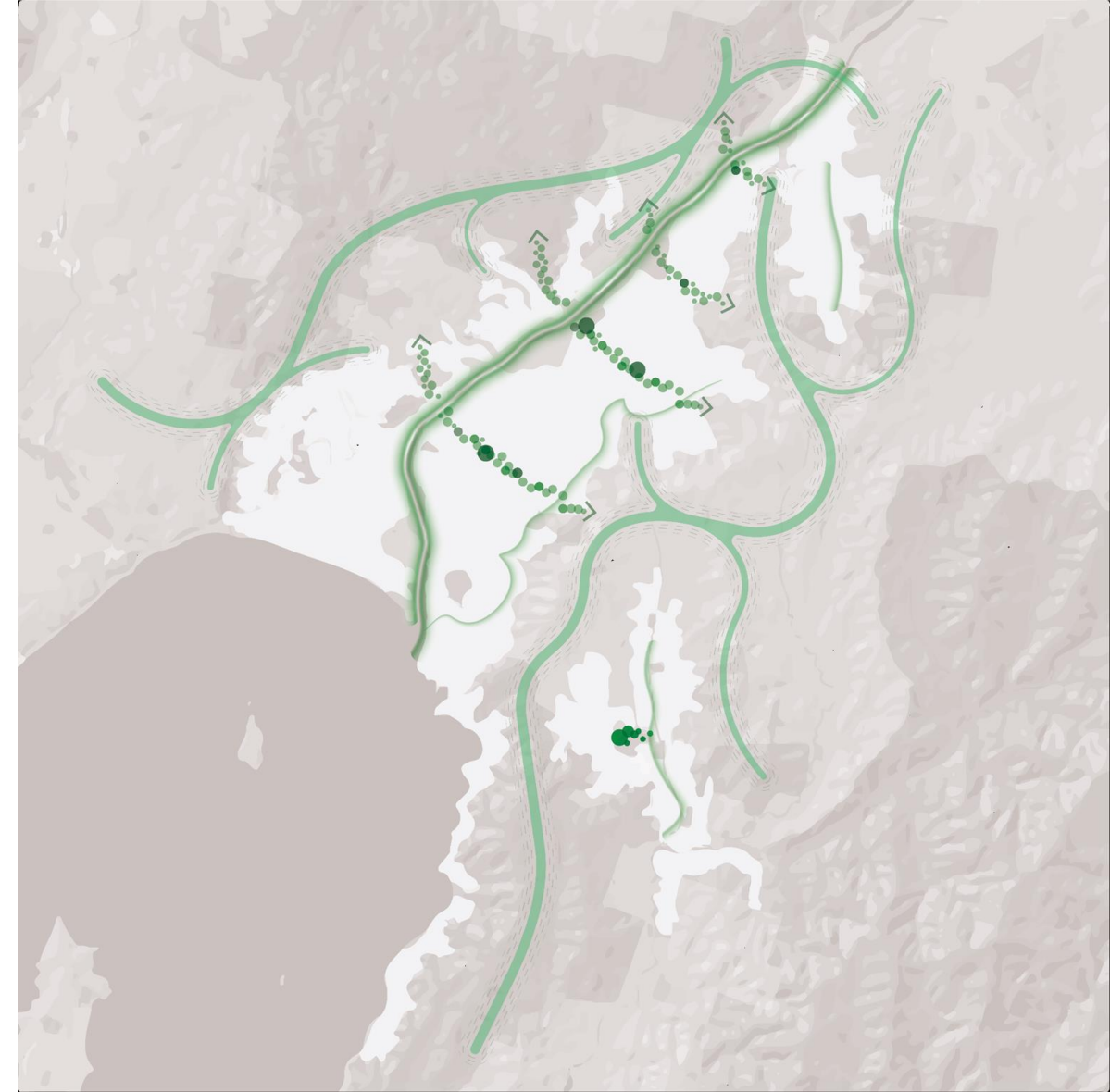
## Create a greener and healthier city

Improve the health and wellbeing of the city and its ecosystems

**We have much to be proud of but there is still more to do to recloak our hills, protect our water and create healthy urban neighbourhoods.**

### This strategic move involves:

- **Street trees** and **reforestation** initiatives
- **Park and reserves** improvements
- **Stream** regeneration and riparian planting projects
- **'Sponge city'** initiatives
- **Partnership** with Greater Wellington Regional Council, Upper Hutt City Council and Mana Whenua to protect our aquifer, river and natural environment
- Support **community initiatives** e.g. pest control







How do we  
implement  
the  
strategy?

# Questions?

---