

Te Ara Tupua – Ngā Ūranga ki Pito-One section

Key updates for Hut City Council

January 2023



Pito-One to Melling- 2023

Lower Hutt

Petone

Te Whanganui a Tara
Wellington Harbour

Thorndon Quay & Hutt Road Project- 2025

Wellington

Ngā Ūranga ki Pito-One section of Te Ara Tupua (2022-2026)



Tupua Horo Nuku Eastern Bays Shared Path (2022-2026)



Eastbourne





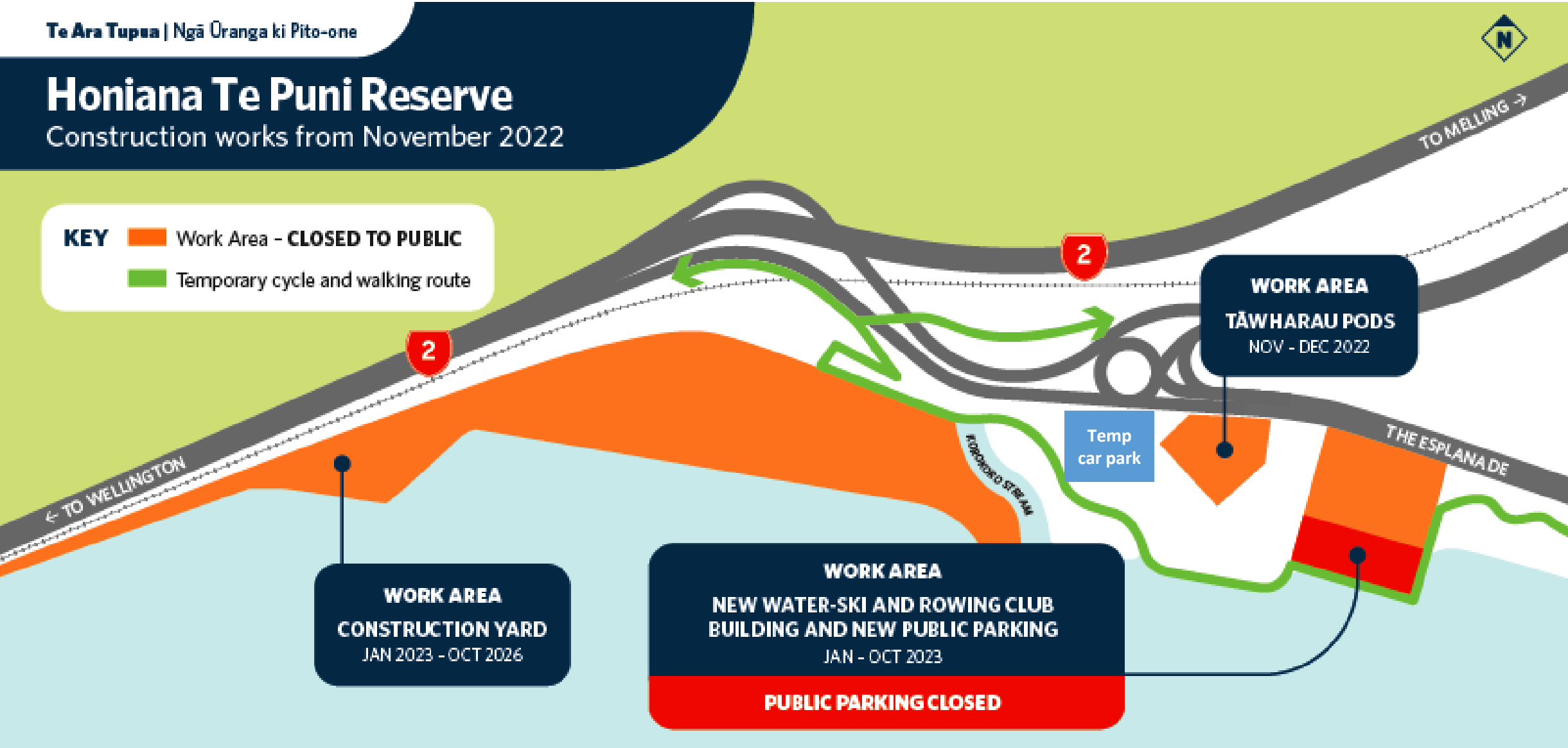
Honiana Te Puni Reserve

Construction works from November 2022



KEY

- Work Area - **CLOSED TO PUBLIC**
- Temporary cycle and walking route



Honiana Te Puni Reserve

- Integrated Club Buildings (ICB) Team Established onsite.
- Fencing being established around the ICB site
- Temporary Carpark under construction for public use.
- Tawharau Pods established in December 2022
- Ministerial Event 16 Feb 2023



Pito-One Yard Progress

- Fencing at the Pito-One Yard has commenced
- Plant has mobilised into the stockpile area to begin site clearance



Nga-Uranga Yard Progress



Nga-Uranga Yard Establishment

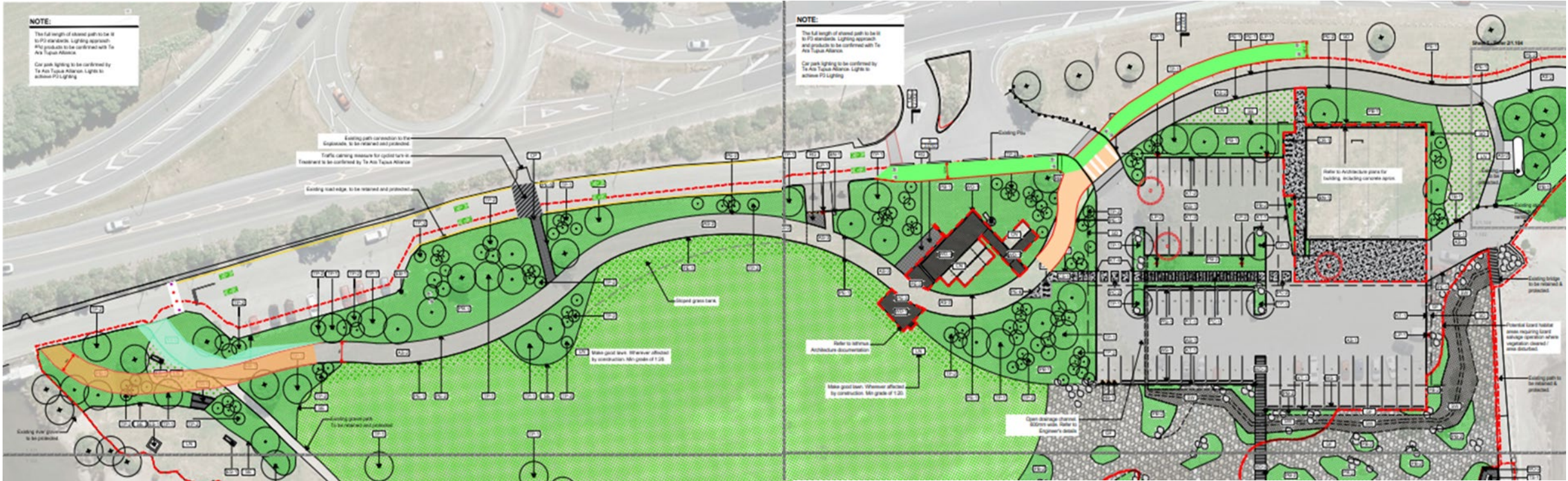
- Level Crossing Construction complete
- KiwiRail revetment repair completed in advance of the Alliance establishing
- Alliance site-office established.
- KiwiRail yard entrance changes with realignment of off-road cycleway to improve safety
- Temporary Barge landing construction(Piki Wahine Waka Landing) commencing in January 2023 to receive construction rock from south island



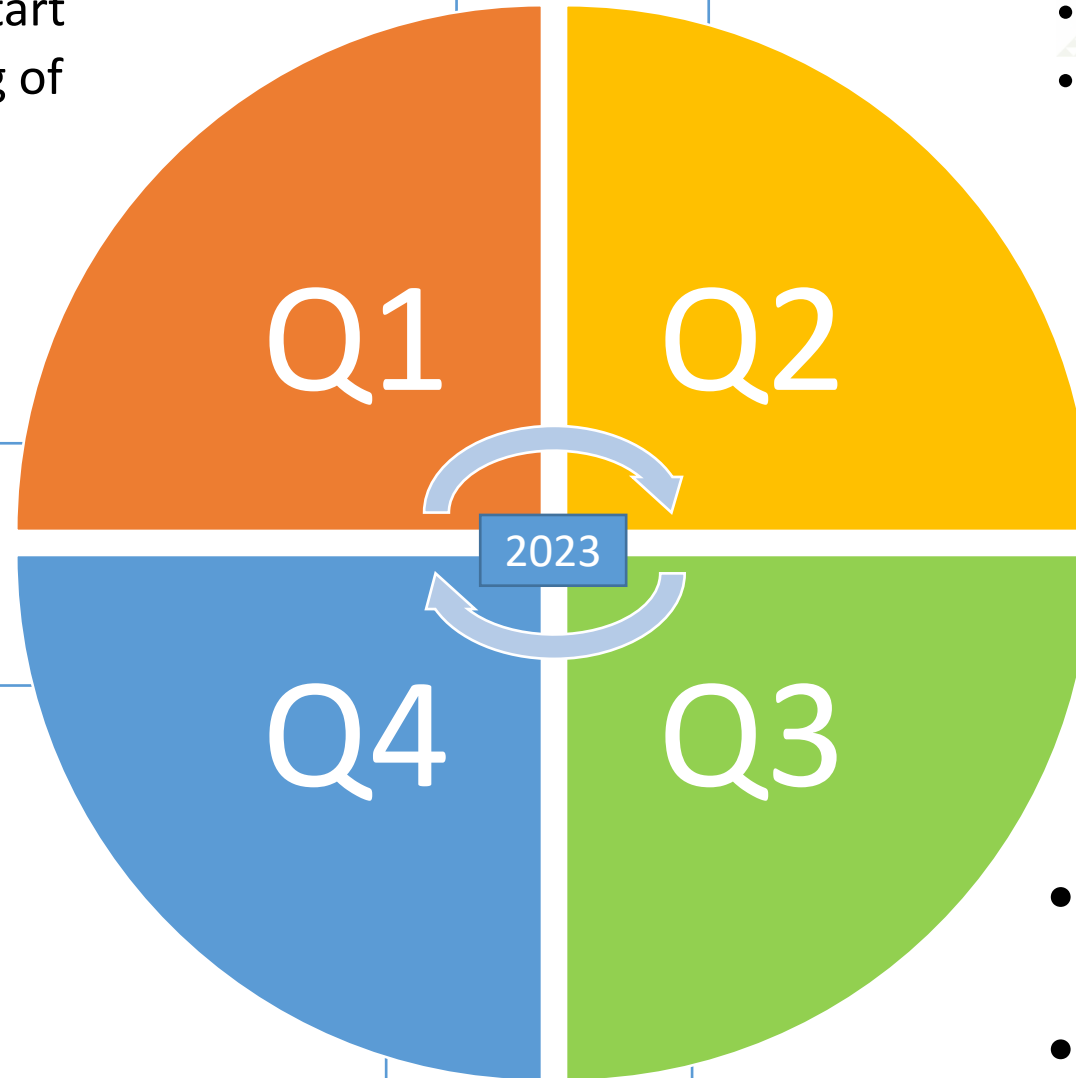
Honiana Te Puni Reserve Layout



Honiana Te Puni Reserve Layout



NKP



- Integrated Clubs Building Start
- Ministerial Event – Opening of Tāwharau Pods
- Offshore Habitats Start
- Digital Shields Operational

- First X-Block Cast
- Offshore Habitats Complete

- Offshore Habitats Complete
- Relocate to Main Site Office at HTPR

- First Seawalls & Revetment Start
- All Design at IFC

Questions?