

Pōtitanga Kawanatanga ā Rohe  
2022 Local Government Elections



**Voting closes at 12 noon on Saturday 8 October 2022**

## Pārongo me ngā Kōrero Kaitono Information & Candidate Profiles



HC011

# Table of Contents

---

Disclaimer	Page 2
Voting Instructions	Page 4 to 6
Hutt City Council Mayor Electing the Mayor	Page 7
Hutt City Council City-wide (At large) Electing 6 Hutt City Councillors	Page 9
Hutt City Council Central Ward Electing 1 Councillor	Page 21
Hutt City Council Eastern Ward Electing 1 Councillor	Page 23
Hutt City Council Harbour Ward Electing 1 Councillor	Page 25
Hutt City Council Northern Ward Electing 1 Councillor	Page 26
Hutt City Council Wainuiomata Ward Electing 1 Councillor	Page 28
Hutt City Council Western Ward Electing 1 Councillor	Page 29
Hutt City Council Eastbourne Community Board Electing 5 Board Members	Page 31
Hutt City Council Petone Community Board Electing 6 Board Members	Page 36
Hutt City Council Wainuiomata Community Board Electing 6 Board Members	Page 40
Hutt Mana Charitable Trust Lower Hutt City Electing 2 Trustees for Lower Hutt City	Page 45

## Disclaimer

This candidate directory has been compiled under the Local Electoral Act 2001. The Act provides that an electoral officer is not required to verify or investigate any information included in candidate profile statements and is not responsible for the accuracy of the information contained in such statements.

# Table of Contents

---

Wellington Regional Council  
Te Awa Kairangi ki Tai/Lower Hutt  
Constituency  
Electing 3 Regional Councillors

Page 49

# VOTE. PACK. POST.

Three easy steps to complete your postal voting.

## 1. Vote

Follow the instructions on your voting document.



## 2. Pack

Put your voting document in the orange return envelope.



## 3. Post

Seal the orange envelope and post or deliver.



To find a nearby Post Box  
**Scan this Barcode**  
or go to  
[www.nzpost.co.nz/find-nz-post](http://www.nzpost.co.nz/find-nz-post)



## Helping you to vote for this election

- Candidates are listed in the voting document under the elections they are standing for.
- We have colour coded the voting document and this profile book to help you match the elections and candidate profiles.
- This booklet may contain other elections that do not apply to you.

The successful candidates make decisions that affect us all every day. You will find all or some of these positions on your voting document:

- **The Mayor** is the leader of the City or District Council.
- **The City or District Council** provides communities with a wide range of local services and facilities. Councils make decisions to improve community wellbeing including key infrastructure (e.g. water supply, sewerage, roads), local regulations, recreational facilities, parks, planning and building issues. The council may be elected 'at-large' or divided into wards (including general or Māori).
- **The Regional Council** makes decisions about functions best delivered at a regional scale such as natural resource management (e.g. quality of water, allocation of water, land and soil, coastal planning, plant and pest control), regional transport, and civil defence and emergency management. Unitary Authorities perform the functions of both City or District Councils and Regional Councils. The regional council is divided into constituencies (which may be general or Māori).
- **A Community Board** provides leadership to empower local communities and may make decisions about local issues or recommend how Council should spend money on local services. Community Boards may be divided into subdivisions.
- **A Licensing Trust** exists to sell alcohol responsibly through premises in the trust area and decide how surplus profits are returned to the community. Community and other Trusts support charitable work. Licensing Trusts may be divided into wards.
- **A Poll or Referendum** may also be on your voting document. Your vote in this helps the Council make decisions on the issue being considered.

### Important dates for this election

- **Post**  
your individual voting document in the freepost envelope no later than **Tuesday, 4 October 2022**
- **OR**  
take it to the address shown on the voting document so it is with the Electoral Officer **before voting closes**
- **Voting closes**  
**12 Midday, Saturday, 8 October 2022**

**Need more help?** You can ask another person to help you mark the document if you can't see well or read or write or have difficulty with English. If you are unsure what to do, or have made a mistake that you can't correct clearly, contact the electoral officer on the number shown on the voting document.

## He āwhina i a koe ki te pōti i tēnei pōtitanga

- E whakarārangihia ana ngā kaitono i te pepa pōti i raro i te pōtitanga e tū ana rātau.
- Kua waeheretia ā-tae te pepa pōti me tēnei pukapuka kāhua hei āwhina i a koe ki te hono i te pōtitanga me ngā kāhua kaitono.
- Kei roto pea i tēnei pukapuka ētahi atu pōtitanga kāore i te hāngai ki a koe.

Ka tuku whakatau ngā kaitono angitu e pā ana ki a tātou katoa i ia rā. Ka kite pea koe i ēnei tūranga katoa, i ētahi rānei i runga i tō pepa pōti:

- **Ko te Koromatua** te kaiārahi i te Kaunihera Tāonenui, Kaunihera ā-Takiwā rānei.
- Ka whakarato te **Kaunihera Tāonenui, te Kaunihera ā-Takiwā rānei** i ngā momo ratonga me ngā whakaurunga paetata whānui ki ngā hapori. Ka tuku whakatau ngā Kaunihera hei whakapai ake i te oranga hapori, tae atu ki ngā hanganga matua (hei tauira, te ratonga wai, pūnaha parakaingaki, rori) ngā ture ā-rohe, whakaurunga whakangahau, ngā pāka, ngā take whakamahere, waihanga hoki. Ka pōtihia pea te Kaunihera whānui, ka whakawehea rānei ki ngā rohe pōti (tae atu ki ngā rohe pōti auraki, Māori rānei).
- Kei te **Kaunihera ā-Rohe** ngā whakatau mō ngā mahi e tika ana kia whakahaere ā-rohetia pērā i te whakahaere rawa taiiao (hei tauira, te mauri o te wai, te tohatoha i te wai, te whenua me te oneone, ngā mahere takutai, te patu tarutaru me ngā kīrearea) te tūnuku ā-rohe, me te whakahaere whakamaru ohotata. Ka whakahaerehia e ngā Kaunihera Whakatōpū ngā mahinga a ngā Kaunihera Tāonenui, ā-Takiwā rānei me ngā Kaunihera ā-Rohe. Ka whakawehea te kaunihera ā-rohe ki ngā rohe pōti (auraki, Māori rānei).
- Ko tā **te Poari Hapori** he ārahi ki te whakamana i ngā hapori paetata me te tuku whakatau-pea mō ngā take ā-rohe, me te tuku tohutohu pēhea rānei te whakapau a te Kaunihera i ngā pūtea ki ngā ratonga ā-rohe. Ka whakawehea pea ngā Poari Hapori ki ngā wawaetanga.
- Ko te mahi a te **Tarahiti Tuku Raihana** he hoko tika i te waipiro i roto i te rohe tarahiti me te whakarite me pēhea te whakahoki i ngā toenga monihua ki te hapori. Ka tautoko ngā Tarahiti Hapori me ētahi atu Tarahiti i ngā mahi ohaoha. Ka whakawehea pea ngā Tarahiti Tuku Raihana ki ngā rohe pōti.
- Tērā pea **he Pōti, Pōtitake rānei** kei runga i tō pepa pōti. Ka **āwhina** tō pōti i roto i tēnei i te Kaunihera ki te tuku whakatau mō te take e whakaaroahia ana.

### Ngā rā matua mō tēnei pōtitanga



#### **Pōhitia**

tō pepa pōti takitahi ki roto i te kōpaki utukore i mua tonu i te **Tūrei, te 4 o Whiringa-ā-nuku 2022**

#### **TĒRĀ RĀNEI**

haria ki te wāhitau i runga i te pepa pōti kia tae atu ki te Kaiwhakahaere Pōti i mua i te katinga o ngā pōti

#### **Ka kati ngā pōti**

**ā te 12 i te rā-tū, Rāhoroi, 8 o Whiringa-ā-nuku 2022**

**Kei te hiahia āwhina anō?** Ka taea e koe te tono ki tētahi atu ki te āwhina i a koe ki te māka i te pepa mēnā kāore i te pai tō kite, he uaua rānei ki a koe te pānui, te tuhi, te kōrero Ingarihi rānei. Mēnā kāore koe i te tino mārama me aha koe, kua tuhi hapa rānei e kore e taea te whakatika kia mārama, whakapā atu ki te kaiwhakahaere pōti mā te nama i runga i te pepa pōti.

## Hutt City Council Mayor Electing the Mayor

---



### **Campbell BARRY**

Labour

My principal place of residence is in the Hutt City Council area. I am also standing for Hutt Mana Charitable Trust - Lower Hutt.

I want Lower Hutt to be the best place to grow up, raise a family, and thrive. As Mayor, I've been focused on making this a reality for all our

people.

This term has been about progressive change, underpinned by getting the basics right. We've doubled investment in water infrastructure, and made developers pay their fair share towards the cost of growth. We've started re-building Naenae Pool, and delivered a modern kerbside rubbish and recycling service.

If re-elected, I'll fight for the future of Hutt Hospital, keep our record investment in infrastructure on track, and put our environment front and centre. With the rising cost of living, I'll continue to carefully approach every dollar council spends.

I'll always put our community first. This means taking a critical local view of government policy, like its blanket approach to housing intensification, and scrapping all off-street carparking requirements.

Read more: [campbellbarry.co.nz](http://campbellbarry.co.nz)



### **Falgoon PATEL**

My principal place of residence is in the Hutt City Council area.

Falgoon Patel for:  
Mental Wellbeing  
Small Business  
Fixing the potholes

## Hutt City Council Mayor Electing the Mayor

---

---



### **Tony STALLINGER**

Independent United Hutt

My principal place of residence is in the Hutt City Council area. I am also standing for Hutt City Council - At Large and Hutt Mana Charitable Trust.

I'm passionate about our wonderful City and its diverse communities. I was born here and currently live in Belmont with my family. After providing financial services to large organisations in NZ and Washington DC, I became Hutt City Council's CFO and then Chief Executive for twelve years. My understanding of how Council works is without equal. Sadly, Council spending is out of control, services are failing with the current council planning to double rates and charges. 2019 campaign promises have not been delivered. A more experienced team is desperately needed to get things done and secure an affordable future. Electing me and our United Hutt team will ensure: excessive rate rises and spending are stopped; services get restored; genuine community consultation without government party control; and a united Council.

For more information visit [www.unitedhutt.co.nz](http://www.unitedhutt.co.nz).

I seek your support.

## Hutt City Council City-wide (At large) Electing 6 Hutt City Councillors

---



### **Mark ATKIN**

Independent

My principal place of residence is in the Hutt City Council area.

Mark has lived in the Hutt Valley since he was 4. He built his own home in Kelson in 1983.

He has a bachelor's degree in Chemistry, an honours degree in Law, a Certificate in

Management Science, and is an enrolled (non-practising) Barrister and Solicitor.

He has worked in the freezing industry, textiles, construction, joinery, banking and, for the almost 20 years, in central government, mainly in education, the last 9 as a contractor.

His company, Wildfern NZ, produces NZ's leading range of honey mead wine and liqueurs. He is past president of the NZ Fruit Wine and Cidermakers' Association, and helped establish Distilled Spirits Aotearoa (spirits sector body).

He has been a committee member and official of community groups such as the Kelson Community House building committee, Wellington branch of the Soil and Health Association, and Wellington Amateur Fruit Wine Association, and helped establish the Taita Time Bank.



### **Josh BRIGGS**

Independent

My principal place of residence is in the Hutt City Council area.

Over the last six years I have brought my experience in community development, youthwork and governance to the Council table to support our communities to thrive.

I'm proud to be part of a Council which is fronting up to the challenges facing our city, including investing in core infrastructure like our water network and community facilities.

As the chairperson of the Climate Change and Sustainability Committee I have led the start of Council's Climate Change response alongside our community.

I work collaboratively with my fellow elected colleagues, mana whenua, residents and businesses in our city. I will continue to be a strong advocate both at Council and on other key issues for our people such as retaining services at Hutt Hospital.

I know what is needed to make a difference, and I will continue to strive to make progressive change for our city.

Please support me with your vote.

[www.joshbriggs.co.nz](http://www.joshbriggs.co.nz)

## Hutt City Council City-wide (At large) Electing 6 Hutt City Councillors

---



### **Brady DYER**

Independent

My principal place of residence is in the Hutt City Council area.

It's been my absolute pleasure to represent our community as a city councillor over the past three years.

We are facing a range of challenges, from population growth and housing supply, to climate change and ageing infrastructure. But challenges bring opportunities. Through my experience, unique set of skills, and strong leadership I will help our city make the most of those opportunities.

To me, Lower Hutt is such an amazing place to call home, run a business, and raise our daughter. We have such vibrant and diverse communities, and the thing I have loved most about this position is meeting new people and hearing their stories. I'm really proud of what we have achieved in the last three years, but there's still so much more to do. With your support, I'm looking forward to continuing this important mahi.

Visit [dyer.nz](http://dyer.nz) for more information, social media links and my live chat.



### **Simon EDWARDS**

Independent

My principal place of residence is in the Hutt City Council area.

Nearly 27 years as Hutt News editor put me in contact with most local community groups, government agencies, businesses, not to mention many thousands of residents. I know how the city

ticks. I was awarded the MNZM for services to journalism and I use that ability to ask hard questions and listen carefully to all points of view around the Council table. Two terms on council, including as Chair of three key committees, have reinforced my belief an overriding councillor duty is striving for value from every rates dollar. I have a near 100% record of attendance at meetings and briefings, and work hard to address concerns raised with me by residents. My priorities: climate change action, including better active/public transport options; ensuring government-mandated 3Waters reforms and bills to residents from the new entities are matched by equivalent cuts in city rates; sticking to the Riverlink/floodway/inner city apartments strategy. [www.simonedwards.nz](http://www.simonedwards.nz)

## Hutt City Council City-wide (At large) Electing 6 Hutt City Councillors

---



### **Mike FISHER**

Independent

My principal place of residence is in the Hutt City Council area. I am also standing for Petone Community Board.

Roads, footpaths, rubbish, libraries, recreational amenities, and District Plans. Maybe boring for some but they're bread and butter issues that

Councillors need to deal with day to day. It's time to decide who you want to tackle the myriad of issues facing Hutt City, from climate change and resilience to maintaining flourishing communities and progressive development.

I'm standing for City-Wide Councillor to offer the key skills of listening, discussing, questioning and debating the issues. Let's have a collegial Council. I've served on the Petone Community Board as Chair and Deputy Chair, have worked in the vocational rehabilitation sector, and am a Justice of the Peace. I am experienced with working with Council officers, diverse communities and age groups.

Let's stop the distractive politics and refresh and reinvigorate the Council and grow our city. I welcome your support and vote. See Facebook: Vote Mike Fisher 2022



### **Peter FRASER**

Independent United Hutt

My principal place of residence is in the Hutt City Council area.

I'm standing for Council due to concerns around the city's finances, residential intensification, and the need to improve communities in place. I'm an economist and spent 20 years in government

(including Treasury and the Department of Building and Housing) before establishing my own consultancy - specialising in agricultural and water-related issues. I've represented corporates, NGOs, and Māori organisations; and provided expert evidence to Environment Commissioners, the Environment Court, and the Waitangi Tribunal. As an army officer, I undertook an operational tour of Bosnia. I'm the NZ Māori Council National Secretary. I currently own and operate a surface preparation business. A Hutt boy from way back I live with my wife and teenage sons (and menagerie of pets) in Waterloo. I whakapapa to Ngati Hauiti ki Rangitikei and Clan Fraser of Lovat.

For more information visit [www.unitedhutt.co.nz](http://www.unitedhutt.co.nz).

## Hutt City Council City-wide (At large) Electing 6 Hutt City Councillors

---



### **Simon GIBBS**

Independent

My principal place of residence is in the Hutt City Council area. I am also standing for Petone Community Board.

Born and raised in Hutt City, have my own business and work as a property manager for a local company. I can relate to all people and can see things from many points of view.

With many issues facing the Hutt now and ahead, I have a firm belief that the answers are with the people living here, and if I can empower locals to be able to find their own solutions as individuals or community groups then I would see my role as enabling that to happen.

Front of mind will be care with how ratepayers money is spent. The cost of living continues to rise, and higher rates bills will make things worse for residents.

I have a strong belief in freedom and local control, and will be standing in opposition to 3 waters, government overreach, and for decisions to be made by locals of Hutt City.



### **Barbara HAY**

The Opportunities Party (TOP)

My principal place of residence is in the Hutt City Council area.

A lifetime Hutt resident, progressing from family home in Woburn, to first house in Taita and forever home in glorious Stokes Valley. Now retired following a rich and rewarding career in education, most recently as Principal in Stokes Valley. In 2005, I managed the merger of Kamahi and Stokes Valley Schools to become Koraunui. My work, largely in multicultural schools, has helped me grow understandings beyond my own upbringing, a privilege.

I led the transition from SV Community House to Hub and the basketball court installation.

Interests have been a deep involvement with Hutt Repertory Theatre, competitive volleyball, a progression of dogs for companionship and exercise, and regular movie nights. Retired life is busy. I have voluntary pursuits in managing Koraunui School library, the stream restoration project in Silverstream, HuttFest organisation and SV Foodbank support. Life is good. My key interests in council will be climate change adaptation and environment.



## Hutt City Council City-wide (At large) Electing 6 Hutt City Councillors

---



### **Rachel LEAMY**

My principal place of residence is in the Hutt City Council area.

I think that the most important work Hutt City Council does is ensuring that every rates dollar is wisely spent and to the benefit of the people living in the Hutt. We need to make sure we get the basics' right in terms of infrastructure, this means maintaining, as well as building infrastructure the right way. Key is keeping Hutt City as a livable and beautiful city. We are no longer a satellite of Wellington but a thriving city in our own right and Council needs to focus on keeping it that way. My background is in management, mainly in the public service, I have also worked in local government. I understand how both local and central government work. I have experience in transport, built environment and community services and believe I can contribute to these areas now and the other responsibilities as in time.



### **Kari LLOYD**

Independent

My principal place of residence is in the Hutt City Council area.

I am a Lower Hutt local, I was raised in Naenae. I am a proud member of Ngati Ruanui. I previously worked for Wellington City Council as a Information Technology Project Manager, at Standards NZ and HISO with committees developing national standards and am currently working in the sustainability sector. Being a member of the motorcycle community, I was involved with the Emergency Ambulance Communications Centre (EACC) to support enhancements to finding the location of accidents. In 2016, I completed the Iron Maori to prove someone with multiple sclerosis can break down barriers to sport. I am active in supporting local businesses and love seeing them flourish in the Hutt Valley.

I would like to see broader consultation on issues like the Three Waters, Significant Natural Area (SNA) identification and rates assessment issues. In this post Covid-19 world I have the desire and skills to represent our local community.

## Hutt City Council City-wide (At large) Electing 6 Hutt City Councillors

---



### **Rob MACDONALD**

Independent

My principal place of residence is in the Hutt City Council area.

I am a lawyer and businessman living in Hutt Central. I am standing independently at large. I want informed, consulted, accountable local decisions for furthering City needs not politics or personal agendas. I offer rigour and impartial available input in legal, development, environment, and social matters. I am collegial and will work cohesively with others on all issues bringing my perspective as one of 13 councillors. I eschew bullying, abuse of power and influence. My choices on contentious matters can not please all but they will be reasoned and open, directed to a better equitable City. They will respect all ages, races, genders, religious or believes and values.



### **John MIDDLETON**

Independent United Hutt

My principal place of residence is in the Hutt City Council area.

I have been serving the Hutt Valley first with the Wainuiomata District Council and then 22 years as part of Infrastructure Contracts, Hutt City Council. Leading teams executing civil contracts for projects and maintenance including transport and roading teams and some seismic strengthening. With your support I will champion lower rates and better services to make a positive impact for the people of Hutt City. I always listen with empathy, am a creative thinker, a realist, with good communication skills. I treasure quality time with family and friends and enjoy Cricket, Golf and am a keen fisherman. I am proud to be your independent candidate running at large, as part of United Hutt a team for the Hutt not affiliated to any political party. For more information visit [www.unitedhutt.co.nz](http://www.unitedhutt.co.nz).

## Hutt City Council City-wide (At large) Electing 6 Hutt City Councillors

---



### **Karen MORGAN**

Independent

My principal place of residence is in the Hutt City Council area.

I have been the Principal of Taita College for the last six years, and whilst I have been in education for the last thirty years, I now feel that the time is right to broaden my leadership role and serve our community at large.

I have worked in different environments and walked alongside people from diverse backgrounds and experiences. I am the voice that can represent each of these perspectives at a strategic level, whilst also driving projects and building a strong team. My focus: Young people, wellbeing, rejuvenating our businesses and climate change. I have a good understanding of other current issues that face our community, and will work hard to ensure good decision making that is sustainable, fair and equitable.

I know and love our city and want the very best.

I would value your support.

Visit my page: <https://morgankaren4huttci.wixsite.com/website>



### **Chris NORTON**

My principal place of residence is in the Hutt City Council area.

Kia ora e te whanau.

Having been an active member of the Naenae community for a decade, what's this election about for me and my family? It's our city working with nature in a future unlike the past!

We are at a turning point; while a start has been made, our plans and future actions must prepare us for new climate and environmental realities. The priority is building our resilience: which includes reducing our carbon footprint, improving our transport systems, smarter housing within the valley, investment in our infrastructure, shopping local, and restoring the vitality of our natural areas and waterways.

To thrive we must nurture where we live. We all have a part making Hutt City the city people want to live in. So, new voter or experienced voter: if you agree Council needs a climate centred approach for our kids' future, then I welcome your vote. [FB.me/ChrisNortonHCC22](https://www.facebook.com/ChrisNortonHCC22)

## Hutt City Council City-wide (At large) Electing 6 Hutt City Councillors

---



### **Prabha RAVI**

Independent United Hutt

My principal place of residence is in the Hutt City Council area.

Hutt City has been my home for over 23 years ever since I migrated to NZ with my husband and two children. My professional life has been a combination of management and governance roles across sectors and industries enabling me to understand and appreciate diverse perspectives. I'm a management consultant and an independent director and sit on several local and national boards. I'm passionate about art & culture and am the founder and creative director of Natraj School of Dance, a well-established Indian classical dance school based in the Hutt. I'm contesting to significantly improve the services we provide our residents. I will actively listen, engage and consult with our people early on and represent them effectively at the council. My vision is to see Hutt as a vibrant, inclusive and diverse city that supports art & culture and thrives on good leadership at all times.

[www.unitedhutt.co.nz](http://www.unitedhutt.co.nz).



### **Daniel REURICH**

Independent

My principal place of residence is in the Hutt City Council area.

Hi, I'm Daniel, a 49 year old man, husband, and father of 4 children that loves living in Hutt City, having lived here for over 20 years. I work as a self employed IT consultant.

My vision is for Hutt City to prosper as a place to live, grow, work and raise a family.

I stand strongly against central government taking over our local utilities under the guise of programmes like 3 Waters.

I stand for the freedom of self-determination and strongly promote entrepreneurship.

Taxation has never been the path to prosperity. The council needs to focus on providing core services and key community resources to create an environment that actively encourages business growth. It's time to cut the red tape, rates burden, and simplify council operations to minimize the regulatory overheads of running businesses. This is the only path to a vibrant, healthy and prosperous Hutt City.

## Hutt City Council City-wide (At large) Electing 6 Hutt City Councillors

---



### **Evelyn Joy RICHTER (NÉE CRICHTON)**

Independent

My principal place of residence is in the Hutt City Council area.

Born in Nelson. Family moved to Lower Hutt when I was two years old. Educated at Waterloo, Crownthorpe and Hutt Intermediate Schools and Wellington Girls College, night and

correspondence schools and adult student at Hutt Valley High School.

Worked in office, factories, nurse in RNZAF. Postwoman for 15 and a half years, 10 of those as Head Postwoman. Five children and brought up two grandchildren. Served on numerous committees from age sixteen, held all executive positions, at least nine as Secretary. 1991-1996 Secretary of Lower Hutt Caring Community Coordinating Committee, having being head hunted by then Deputy Mayor, Betty van Gaalen.

Was the Advocate for Hutt City Grey Power and on committee of Lower Hutt Historical Society, a member of Grandparents Raising Grandchildren, Petone Women's Institute and Eastern Hutt Ladies Probus.

Growing up my mentors were Walter Nash, Percy and Mary Dowse and Trevor Young MP.



### **Tony STALLINGER**

Independent United Hutt

My principal place of residence is in the Hutt City Council area. I am also standing for Mayor and Hutt Mana Charitable Trust.

I'm passionate about our wonderful City and its diverse communities. I was born here and live in Belmont with my family.

After providing financial services to large organisations in NZ and Washington DC, I became Hutt City Council's CFO and then Chief Executive for twelve years.

Sadly, Council spending is out of control, services are failing and they plan to double rates and charges. They promised a big investment in infrastructure, but have failed to deliver, instead blowing the extra rates on corporate overheads. A more experienced team is desperately needed to deliver results and an affordable, exciting future for our communities.

Electing me and our United Hutt team will ensure: Excessive rate rises and spending are stopped; services get restored; genuine community consultation without government party control; and a united Council.

For more information visit [www.unitedhutt.co.nz](http://www.unitedhutt.co.nz).

I seek your support.

## Hutt City Council City-wide (At large) Electing 6 Hutt City Councillors

---



### **Phil STRATFORD**

Independent

My principal place of residence is in the Hutt City Council area.

Hutt Born Educated Married 4 Grown Children 14 grandkids Valuer ANZIV LHCC

40 years developing 16 Projects \$700m

Wellington/Brisbane/Sydney Including Kirkcaldies

Station Village. 3,500 onsite jobs 20,000 created

Extensive Experience Construction/Strengthening

Personal Bankruptcy (not business) GFC/Stock Market. Personal Guarantees. All clear.

Interests Family, Exercise, Music, Sport, NZ/Cultural History.

HOBM Rugby Vision behind the rebuild.

Member RSA Workmen's Club Crete Returned Service Association.

26 years Rugby Referee Wellington, NZ, England, Australia and Samoa

4 Years EMANZ - Carbon Footprint/Energy Savings.

Consultant Drainage Industry Subdivision/Cycleways/Motorways.

Aspirations: Seats in Streets, All Weather athletics track, Covering Taita Netball Courts.

Breakwater protect Rail/Cyclists/Rowing Course. Link

Queensgate to new Melling Station

Investigation into unfinished High Street Hotel. Strong independent knowledgeable voice in Council to achieve balance.



### **Gabriel TUPOU**

Independent

My principal place of residence is in the Hutt City Council area.

I will bring experience, integrity and a heart for our community to the Council table. I serve as a

Company Director for the Home of Compassion,

Deputy Chair of the Manaaki Ability Trust Board

and Chair of the Wainuiomata Community Board. I am also an operatically trained Tenor and volunteer District Commander for the Māori Wardens. We need the infrastructure and services in place to support our growing city. I will work with Council to advocate for Lower Hutt's priorities, including; rebuilding our hospital; the Cross Valley Link project; fixing our leaking pipes; and community safety. I will be a Councillor who listens to people and gets on with the job. I was involved in projects, such as the Steering Group for the Wainuiomata Town Centre upgrade and Greater Wellington Regional Council's Whaitua (water catchment) Committee to protect our rivers for future generations. Information at [gabrielutupou.com](http://gabrielutupou.com).

## Hutt City Council City-wide (At large) Electing 6 Hutt City Councillors

---



### **Rosanna VON KEISENBERG**

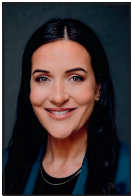
Independent United Hutt

My principal place of residence is in the Hutt City Council area.

I have strong ties to Hutt City and the region. I care about the community that I grew up in. I'm a Physiotherapist, with over 12 years of experience working in Hutt City with elderly and youth

hearing stories of hardship, inability to access facilities due to transport links, financial barriers and concerns from residents who struggle to benefit from the available amenities. I understand the diverse needs of our community. With your support I will advocate improving access to services for our most vulnerable, by engaging and collaborating with community providers, GP's, council staff and community alike to understand what is important for Hutt City residents to live healthy lives. I'm committed to work as your independent city wide candidate, not affiliated with any political party.

For more information visit [www.unitedhutt.co.nz](http://www.unitedhutt.co.nz).



### **Jodie WINTERBURN**

Independent United Hutt

My principal place of residence is in the Hutt City Council area.

As a proud lifetime resident of Hutt City, I can make a positive difference in Council. I'm a wife and mother of two 20-something children, an elected Wainuiomata Community Board member

for the past 6 years, Justice of the Peace, Marriage Celebrant, and Real Estate Salesperson; I wear many hats, and I'm driven to find solutions and bring people together. My courageous mother, a paraplegic, raised my siblings and I in Riverside Drive as a solo mum. Through her, I gained empathy for others, perspective and how to advocate. My decisions are made through listening, balancing differing views, and considering long-term consequences. My ambition is to improve the quality of Council services and decisions for our community and restore financial discipline to stop the excessive rates rises. I would be honoured to serve as your Councillor.

For more information visit [www.unitedhutt.co.nz](http://www.unitedhutt.co.nz).

## Hutt City Council City-wide (At large) Electing 6 Hutt City Councillors

---



### **Karen (Kaz) YUNG**

Independent

My principal place of residence is in the Hutt City Council area. I am also standing for Petone Community Board.

Kia ora, Neih hou and Greetings,

Born and raised in the Hutt to Chinese parents, I'm a Chiwi (Chinese-Kiwi) who is deeply

passionate about this city and its people. I consider Waiwhetū and Moera home where I'm actively engaged in the community and currently work in Petone and Avalon.

I have served two terms on the Petone Community Board and have a background in youth and community development. I'm involved in the wider neighbourhood and love spending time with the tamariki at the local breakfast club; coordinate the Waiwhetū Fruit and Vege Co-op; have over a decade of experience in various levels of governance through the Anglican Church, not-for-profit and community sectors. I'm passionate about social justice and environmental issues; and love seeing people, places and systems come together and thrive.

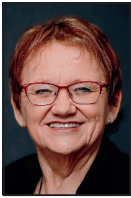
I want to enable people to be heard, empowered and connected to all this city has to offer.

[www.facebook.com/kazforcommunity](https://www.facebook.com/kazforcommunity)



## Hutt City Council Central Ward Electing 1 Councillor

---



### **Glenda BARRATT**

Independent United Hutt

My principal place of residence is not in the Central Ward area.

The Central ward needs a representative with experience and first hand knowledge of Council who will make an immediate, positive and independent contribution around the Council table. Having spent 13 years as a Councillor and past Chair I will continue to listen and advocate for you the residents. For the past 14 years I have been the Manager of an international company based in central Lower Hutt, in addition to my roles as a J.P. Rotarian and Celebrant has opened the door to in-depth communication with many resident about their needs for our City. I am concerned for local business and huge rate increases. Council must work together with communities to ensure right decisions are made. A vote for Glenda is a vote for Your Voice at the council table, strong representation and progress. For more information: [www.unitedhutt.co.nz](http://www.unitedhutt.co.nz).



### **Steve HOCKLEY**

My principal place of residence is in the Central Ward area.

Hi, my name is Steve Hockley. I am a business owner and business coach here in Central Ward. You may have seen my sign on Waterloo Road. I bring a wealth of experience in organising,

supporting, and running businesses. I bring this practical experience to council to help common sense, environmentally sound decisions about how to grow and develop the area we live in.

I am standing for Hutt Central because it is my home and an area small to medium businesses flourish and provide employment to many people from around the Hutt. Much of our city infrastructure is here and some sound strategic planning on how to build the Central area is needed.

How people move around, live, use and enjoy the areas we live in are important to me.

Please vote for me, for practical sound decision making and a better strategic future for the Hutt City.

## Hutt City Council Central Ward Electing 1 Councillor

---



### **Faran SHAHZAD**

Independent

My principal place of residence is in the Central Ward area.

I was born in Wellington and currently employed as a patent lawyer in Lower Hutt. I graduated with a Bachelor of Science and Bachelor of Law from University, where I also won

awards/scholarship for my eco-startup to decrease organic waste/pollution. In recent projects, I developed a pharmaceutical combination for decreasing drug addiction.

Lower Hutt is a beautiful community. My aim is to promote a wellbeing which is offered to everyone regardless of their income, social status etc. Essential services such as affordable housing, efficient public transport, mental health counselling, green spaces, health care etc, need crucial upgrading.

I bring work experience from both private/public sectors and if elected, my aim would be to advocate the best outcomes for our community, represent your voice at the council table, engage with local businesses and promote services for everyone. If you genuinely want change, then vote for a new person with credible background!!

Hutt City Council  
Eastern Ward  
Electing 1 Councillor

---



**Jerry GASS**

My principal place of residence is in the Eastern Ward area.

Lower Hutt has been my city of residence for over 30 years. This city has given more than I can ask for.

I love this city and want to use my expertise to give something back in return.

I have held management positions within the sale and marketing, insurance, and hospitality industries for most of my career, with the last 20 years as a sales consultant in the Real Estate industry mostly in Lower Hutt and a short stint in Auckland.

I am always committed to provide exceptional service and to get fully involved in whatever task is at hand to the best of my ability.

I look forward to listening to your views and together we can make this city a better place.



**Dave HARLE**

Independent United Hutt

My principal place of residence is not in the Eastern Ward area.

I shop, commute, exercise and socialise in the Eastern Ward. I'm Lower Hutt born and raised, I grew up in Fairfield and am proud to have lived in Hutt City for 34 years. My work experience is

in the Plumbing, Construction and Energy Industries. I understand the issues with reform of three waters and the opportunities involved in transitioning to a de-carbonised environment. I believe our city faces immediate challenges with Three Waters reform, Climate Change impact, excessive rates rises and some council services not meeting ratepayer expectations. With your support I will consult, listen to ratepayer's concerns, think creatively to present potential solutions, and work collaboratively within Council to address issues. I ask for your support of my candidacy and in return offer you my experience, commitment, and passion for a better Eastern Ward and Hutt City.

## Hutt City Council Eastern Ward Electing 1 Councillor

---

---



### **Andy MITCHELL**

Independent

My principal place of residence is in the Eastern Ward area.

Tēnā koutou katoa. It's been my honour to serve as the Eastern Ward's councillor for the past three years. In that time I've been an advocate for all people and a voice for nature. I've engaged

widely, listened, questioned and taken evidence-based decisions in the best interests of our city. I've led work to rejuvenate Naenae, been deputy chair of two Council committees and chaired the Wellington Regional Waste Forum.

I'm proud to be part of a progressive council that's working to improve lives for everyone in Lower Hutt and build a better future for our city. We've made great plans and progress, but there's plenty more to do. Housing intensification, infrastructure, climate change, transport and the environment remain key issues requiring strong leadership. As an incumbent councillor I'll represent you with commitment, experience and the respect of my colleagues. Please vote for me again in 2022.  
[www.facebook.com/CrAndyMitchell](https://www.facebook.com/CrAndyMitchell) / [www.VoteAndy.nz](http://www.VoteAndy.nz)

## Hutt City Council Harbour Ward Electing 1 Councillor

---



### **Tui LEWIS**

Independent

My principal place of residence is in the Harbour Ward area.

It has been a privilege to serve as your Harbour Ward Councillor for the past three terms and as Deputy Mayor during this most recent term. I am proud of the progress we have made within our Harbour Ward communities. After decades of talk, the Eastern Bays Shared Path is finally underway. The Moera and Petone Libraries will be upgraded over the next 12 months, and we are tackling the decades of underinvestment in underground infrastructure within our community. Working with our communities on adaptive measures is vital as we face our changing climate. With significant change being imposed on councils from the Government, our community needs a strong voice within our spatial planning and district plan processes. I promise to be that voice. As your local councillor, I have loved working alongside our residents, community groups, sports clubs and local businesses and if re-elected I will continue this approach.



### **Petra SIMM**

Independent United Hutt

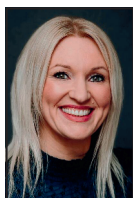
My principal place of residence is in the Harbour Ward area.

I have lived in Eastbourne for most of my life and I work in Petone. It is time for me to give back to the communities that I love. I have worked in the health sector, as a senior manager in a large private medical imaging organisation and more recently, in the primary care sector. I have a strong management and leadership background and will bring business acumen to the council table. Now, more than ever local government needs diverse skill sets to navigate the challenges local communities face. If I am elected, I will advocate for the specific needs of our community, ensure there are robust processes around strategic decisions and prioritisation of spending, hold the council to account, ensuring strong leadership, challenge the status quo. Vote local, make sure you have someone who understands your community speaking on your behalf at council.

[www.unitedhutt.co.nz](http://www.unitedhutt.co.nz)

## Hutt City Council Northern Ward Electing 1 Councillor

---



### **Alice Claire HURDLE**

Independent United Hutt

My principal place of residence is in the Northern Ward area.

I'm a working mum, a wife, a ratepayer living in Stokes Valley. I'm an Associate Nurse Manager for Community Health Services and have spent 15 years as a District Nurse in the Hutt Valley. I'm an advocate for people. I understand the complex needs of our community and enjoy helping people to live their best life. With your support I will champion low rates, affordable and sustainable rent, improved services and a healthy Hutt Valley, safety and infrastructure, activities and events for the disabled, improving lives through the creation of Mental Health through Mentorship programmes aimed at Music and Arts in our under-utilised Community Centres. I'm proud to be standing as your independent candidate for Northern Ward with United Hutt, a team not affiliated to any political party.

For more information visit [www.unitedhutt.co.nz](http://www.unitedhutt.co.nz).



### **Ashley ROPER**

Independent

My principal place of residence is in the Northern Ward area.

Independence, integrity and willing to be a team player.

This is what the HCC needs in its Councillors. This is what I bring - previous board experience, business management experience and 30 years running a business in the lower North Island employing locals.

Councils need fresh new ideas regularly. There needs to be a replenishment on a regular cycle. People and ideas get stale. Infrastructure is our biggest issue at the moment. We need this fixed, I bring this experience to the Council table.

Housing - what are our needs and how should that be implemented in the Hutt Valley in a planned considered way.

Making the Hutt a destination in it own right. How to drive investment and people into wanting to come and enjoy our place our community.

I want to represent my ward. Our voice needs to be heard. I can deliver that voice.

Hutt City Council  
Northern Ward  
Electing 1 Councillor

---

---



**Naomi SHAW**

Independent

My principal place of residence is in the Northern Ward area.

Serving for three years as a City Wide Councillor has been an honour and privilege.

This time, I'm standing for the Northern Ward, the place I was born, raised and still live. I want to build on my work in this community.

I attended Pomare School, Taita Intermediate, Taita College and live in Stokes Valley. I was awarded a NZ Order of Merit MNZM for service to sport. I have two children and four grandchildren. I want to be the voice of advocacy for our Stokes Valley, Taita, Pomare & Wingate communities. Representing our people and communities is a role I take seriously.

I stand because I have integrity, strong values and work hard. I have a genuine understanding of the issues we currently face and I want to be part of the decision-making that allows our beautiful city and the people who live in it to thrive.

## Hutt City Council Wainuiomata Ward Electing 1 Councillor

---



### **Keri BROWN**

Labour

My principal place of residence is in the Wainuiomata Ward area.

As a first-term Councillor for Wainuiomata, I've put our people and community at the heart of everything I do. I've brought my experience in community action, policy and governance to

focus on getting strong local outcomes.

Together we've made good progress.

I'm proud that we have turned, what was an eye-sore as you entered Wainuiomata, into the region's number one Dog Park.

We are investing in Queen Street to make it safe, more accessible and vibrant for our local businesses and community.

We've doubled investment in our water and sewage pipes to front up to the growth in Wainuiomata and past underinvestment. We now have a modern kerbside rubbish and recycling service.

If re-elected, I will focus on a local, new, modern play area for children and families, fight for the future of Hutt Hospital and continue to always be a strong voice for Wainuiomata around the council table.



### **Phil GALLEY**

Independent United Hutt

My principal place of residence is in the Wainuiomata Ward area.

A vote for Mr Hutt Valley - Phil Galley means that you can count on there being a very strong voice around the council for Wainuiomata, to get results.

I love our community & proudly live in Wainuiomata with my family.

It is important that we have a safe community for children, families & our elderly & council can do so much more to provide that safe community.

We need better control of rates which are now out of control & it is unacceptable for our council to be proposing to double the rates over the next 10 years. That must change.

To be a good councillor you need to have good communication skills, decision making, strategic thinking, leadership & relationship building which are all key attributes that I currently use daily within my business & work life.

Wainuiomata needs a strong, fresh voice.

Proudly Independent & a United Hutt



## Hutt City Council Western Ward Electing 1 Councillor

---



### **Sandra GREIG**

Independent United Hutt

My principal place of residence is in the Western Ward area.

I have lived locally in the Western Hills for 40 years. I love our community and want to see it thrive. I am standing because I am deeply concerned about the massive rate increases, we have seen over the last 3 years and the huge increases proposed over the next 10 years. I'm troubled by the lack of consultation from the current Council on major issues such as 3-waters and governance. I have the experience needed to represent the Western Ward having been a former Regional Councillor and District Board member. My background also includes chairing the Hutt River Protection Committee which saw improvements to flood protection. I have also helped promote better rail services for the Hutt. I have been heavily involved in community through many groups and serve as a Justice of the Peace, I am proud to be part of United Hutt team.

[www.unitedhutt.co.nz](http://www.unitedhutt.co.nz)



### **Chris PARKIN**

My principal place of residence is in the Western Ward area.

I've lived in the Hutt for most of my life and I love this city.

I gained an Honours Degree in Chemistry through Victoria University and trained as a secondary school science teacher. I teach in the local community. I have chosen to stand for the Western Ward because I want to see continued progress on key issues, including our approach to climate change and cooperation with other agencies, especially with GWRC and our public transport network. As a local councillor, I will be accessible and represent our community's views to affect meaningful, positive, and long-term change. I was an at-home dad and became involved with Playcentre, including serving as co-president of Hutt Playcentre Association where I learnt to value and use consensus decision-making. I have served on committees, including as a camera club president. I have the privilege of being co-chair of the Western Ward community panel.

Kua mātua noho au i Te Awakairangi, he nui taku aroha ki tēnei tāone.

I riro mai te Tohu Hōnora ki te Mātai Matū i Te Herenga Waka, ā, he kaiako pūtaiao kura tuarua aha ki te hapori pātata.

Ka tū au ki te Rohe Pōti Hauāuru nā tōku hiahia kia koke tonu ngā take matua, arā ko te panoni āhuarangi, ko te pāhekoheko

Hutt City Council  
Western Ward  
Electing 1 Councillor

---

---

*Continued from previous page*

ki ērā atu pokapū. Hei kaikaunihera ā-rohe, ka wātea au ki a koutou, ka whakakanohi i ngā tirohanga o te hapori hei hanga i te huringa whaitake, mō te wā roa.

I te wā he pāpā noho-kāinga au i tū au hei perehitini-ngātahi o te Hutt Playcentre Association, i reira au i ako ki te kaingākau, ki te whakamahi i te whakataunga tatūnga tukipū. Kua tū au ki ētahi komiti, ā, he hōnore te tū hei hea-ngātahi o te pae hapori o te Rohe Pōti Hauāuru.

## Hutt City Council Eastbourne Community Board Electing 5 Board Members

---



### **Travis ANCELET**

My principal place of residence is in the Eastbourne Community Board area.

I am excited to put myself forward to serve the Eastbourne and Bays communities as a member of the Community Board. Since moving to the Bays in 2012, my young family has truly felt a part of this special place. My aspiration is that our community is welcoming and safe, that businesses that form the heart of our community have the support they need to thrive, and the neighborhood remains a wonderful place for our children to grow up.

Over the next three years I plan to: increase sustainability efforts, initiate and support activities that bring our community together, continue ongoing work to strengthen our resilience to the impacts of climate change, and ensure our community's voice impacts on decisions made around the Hutt City Council table.

I look forward to serving the Eastbourne and Bays communities as a member of your Community Board.



### **Susan EWART**

My principal place of residence is in the Eastbourne Community Board area.

Raised in York Bay, I came back to live in the family home 15 years ago and have taken an active interest in local issues since then. It is healthy for the community board to have a variety of views from the bays and Eastbourne on the significant issues we face, such as the shared path, sea level rise, medium density housing proposals and speed limits. With a long career in journalism and communications for various professional organisations and a law degree completed as a mature student, I feel I can make a useful contribution to the board's work. I was a volunteer Victim Support worker for more than eight years, and am now an Okiwi volunteer driver, an active member of Eastbourne's Historical Society and the York Bay Residents' Association, and have assisted with Butterfly Creek Theatre Troupe productions.

## Hutt City Council Eastbourne Community Board Electing 5 Board Members

---



### **Murray GIBBONS**

My principal place of residence is in the Eastbourne Community Board area.

I am a current member of the Eastbourne Community Board on which I have served since 2002. I enjoy representing the citizens of Eastbourne and the Bays in all issues dealing with

the Hutt City Council and the Wellington Regional Council and like to think I can get things done.

I was responsible for the Mosaics in the Village and the Heritage Trail.

We have some serious challenges ahead of us, Sea level Rise, Shared Path, and getting a Bus Service that is worthy of the name Service.



### **Lesley HAINES**

My principal place of residence is in the Eastbourne Community Board area.

I've lived in Days Bay for 23 years. I love the Eastbourne area - the birds, the bays, the bush and the wild coast to the South. It's a community full of great people. And a jewel in the crown of

Te Whanganui a Tara.

As locals we face opportunities and challenges - the building of the shared pathway Tupua Horo Nuku and the Williams Park upgrade, alongside the ongoing challenges of protecting our natural environment, adapting to climate change and preserving our heritage.

I work as a director and trustee, after time as a senior public servant. I am well versed in seeking and listening to people's views, finding common ground and working with people to solve problems. I am an effective advocate.

If elected I will do my best to work as part of the ECB team representing our community's views and engaging effectively with the Council and other organisations.

## Hutt City Council Eastbourne Community Board Electing 5 Board Members

---



### **Emily KEDDELL**

Independent

My principal place of residence is in the Eastbourne Community Board area.

My name is Emily Keddell and I love living in Eastbourne. The council needs to be held accountable to the Eastbourne community's views regarding our main road in and out of the bays.

Speed bumps and pedestrian crossings are the last thing we need on the edge of Days Bay this coming summer. I have the energy and drive to advocate for our local issues around roading, the maintenance of local public services and facilities and protection of our unique environment. I want Eastbourne to continue to thrive as the caring and passionate community it is. My involvement in many of the local clubs and groups has fostered in me a clear sense of Eastbourne's worthy character. I have a particular interest in developing confidence and creativity among our youth and run a performance development school, Speak Again, in the village. I look forward to serving more of our community.



### **Drew MAYHEM**

Independent

My principal place of residence is in the Eastbourne Community Board area.

Kia koutou,

I was born in Lower Hutt and have resided in Point Howard since 2019.

During that time, I've come to understand that even our harbourside community has differing needs which need to be given voice. My youngest has recently enrolled at Muritai and I've been impressed at how welcoming and supportive the community has been.

Every community needs a diversity of views. As a candidate I am not about to tell you what to think or what to do. If elected, it is the role of governance to listen and to ensure the operational parts of council genuinely respond to the feedback they receive. If elected it will be my privilege to represent views from all within our region.

## Hutt City Council Eastbourne Community Board Electing 5 Board Members

---



### **Belinda MOSS**

Independent

My principal place of residence is in the Eastbourne Community Board area.

We live in a wonderful place. I am fortunate to have been here for 25 years, enjoying the hills, bush, beaches, coastline and harbour, and the Eastbourne community.

The primary role of a community board member is to represent and advocate for the community's interests by liaising with councils and community organisations. It would be an honour to continue representing the Eastern Bays and Eastbourne on the Eastbourne Community Board.

Point Howard and the bays south of it are gateways to Eastbourne and need active representation on the Board - this will be important over the next three years as the Tupua Horo Nuku Eastern Bays shared path is constructed.

I work in communications and am a good listener and clear thinker with experience working between groups and allowing everyone to be heard to achieve the best results. I am a member of the Lowry Bay Residents Association committee.



### **Bruce SPEDDING**

My principal place of residence is in the Eastbourne Community Board area.

I am a resident and current member of the Eastbourne Community Board. I value our unique community and want to preserve its character while helping to adapt to our changing world.

My particular areas of interest include developing community resilience and inclusiveness, helping address environmental and climate change issues, and promoting active recreation for the social, health and economic wellbeing of our community.

## Hutt City Council Eastbourne Community Board Electing 5 Board Members

---



### **Frank VICKERS**

My principal place of residence is in the Eastbourne Community Board area.

It's been a privilege serving the Eastbourne community over the last three years. There are many important projects to be advanced, including the Williams Park Plan and how it ties in with the Shared Path route through Days Bay. The Board is also pushing for facilities to encourage young cyclists, starting with a junior cycle skills track at Burdan's Gate. We have an ongoing commitment to protect our native flora and fauna. On this point, not long after the last election, our Councillors voted to enact three cat bylaws, compulsory desexing, microchipping, and a limit of three cats per household. This decision was welcomed by cat welfare charities and environment groups alike, but the work of drafting and ratifying these bylaws is yet to be done and needs a nudge. If re-elected, I pledge to continue to do my best to advance the interests of the Eastbourne community. Thank you.

## Hutt City Council Petone Community Board Electing 6 Board Members

---



### **Mike FISHER**

Independent

My principal place of residence is in the Petone Community Board area. I am also standing for Hutt City Council - At Large.

Currently the Deputy Chair of the Petone Community Board, I'd like to continue the work of serving the residents of our great community

and ensure that our unique heritage and the characteristics of our neighbourhoods are respected as our city grows.

Petone faces multiple pressures with infrastructure, housing, urban development and climate change. We are a key regional player in the retail, commercial, and industrial sectors. Engaging with businesses and organisations and supporting recreational and community groups to flourish in our area is something that's very important to me.

As a member of Petone 2040, I want to see this vision implemented.

I've worked in the vocational rehabilitation sector and am a Justice of the Peace. Experienced in working with Council officers, diverse communities and age groups, I offer the key skills of listening, discussing, questioning and debating the issues.

I welcome your support. See Facebook: Vote Mike Fisher 2022



### **Sheree FREEMAN**

My principal place of residence is in the Petone Community Board area.

Born and bred in Petone (Iwi - Ngāti Kahungunu, Ngāi Tahu) a student of Petone Central and Hutt Valley Memorial College. Petone community has always been a part of my life.

I am a civil servant in government and have a background in marketing, events, training, and recruitment supporting rangatahi into work and more recently supporting people with mental health conditions to wellbeing and employment.

My son Tiaki studies civil engineering at WelTec and plays in the Colts for Petone Rugby Club.

I care about climate change, emergency management and having dry warm housing for everyone and I will be focused on connecting communities and working with them to bring together solutions for these issues.

I want Petone streets to remain safe for whanau and would like to see more community activities, sports, art, entertainment, and culture in our town.

[facebook.com/Vote-Sheree-Freeman-101638389328889](https://facebook.com/Vote-Sheree-Freeman-101638389328889)



## Hutt City Council Petone Community Board Electing 6 Board Members

---

---



### **Simon GIBBS**

Independent

My principal place of residence is not in the Petone Community Board area. I am also standing for Hutt City Council - At Large.

Born and raised in Hutt City, have my own business and work as a property manager for a local company. I can relate to all people and can

see things from many points of view.

With many issues facing the Hutt now and ahead, I have a firm belief that the answers are with the people living here, and if I can empower locals to be able to find their own solutions as individuals or community groups then I would see my role as enabling that to happen.

Front of mind will be care with how ratepayers money is spent. The cost of living continues to rise, and higher rates bills will make things worse for residents.

I have a strong belief in freedom and local control, and will be standing in opposition to 3 waters, government overreach, and for decisions to be made by locals of Hutt City.



### **Mike HENDERSON**

Independent

My principal place of residence is in the Petone Community Board area.

Thank you for viewing my candidate profile.

I have served two terms previously as a Community Board member, and seek election for a third term.

I feel that I have served the community well to date, and would continue to do so.

I have strong governance, decision making and communication skills.

I have a practical nature, and voters can expect a common sense and considered approach from me to any issues presented to the Board.

I have a 100% attendance record for Community Board meetings in my previous terms.

I am always happy to make myself available when needed.

## Hutt City Council Petone Community Board Electing 6 Board Members

---



### **Semi KURESA**

Independent

My principal place of residence is in the Petone Community Board area.

Tenā Koutou Katoa

I'm Semi Kuresa, and in the 2022 local elections I'll be running as your candidate for the Petone Community Board, because like you I know

Petone is an outstanding place to live.

My decision to stand for the Local Community Board is to advocate on behalf of you and your families, to be your voice on local issues that matter most.

I have been inspired by our community leaders, and I thank you for keeping our communities safe.

I will advocate for sound public transport to mitigate the traffic congestion we are experiencing.

Promote opportunities to maximise the facilities in Petone for our community to connect and enjoy.

Look for opportunities for Jackson Street and the businesses that attract so many people to our iconic, historical and diverse destination.

There are great things ahead for us, and I thank you for this opportunity.

Ngā mihinui



### **Gus MCMILLAN**

Independent

My principal place of residence is not in the Petone Community Board area.

I am currently employed as the NZ Quality Manager for an international company, away from work have contributed to sports administration at a local and national level for

four decades.

I have excellent communication skills and my efforts in sports administration have been recognised with a Distinguished Service Award from Motorsport NZ, Sport Wellington Volunteer of the Year in 2009 and Life Membership of the Petone Rugby Football Club.

I'd like to take the opportunity to contribute back to our vibrant local community. My aim is to listen to the community, be a voice for all the community and would like the opportunity to represent you on the Petone Community Board.

GH (Gus) McMillan

## Hutt City Council Petone Community Board Electing 6 Board Members

---



### **Matt ROBERTS**

My principal place of residence is in the Petone Community Board area.

Kia ora, koutou, I believe key challenges for the Petone Community Board area are responding to climate change, housing intensification and natural hazards. I will help address the need for more affordable housing while enhancing the character that makes our area special and recognising climate impacts. Our transport system needs to be sustainable, efficient and support a range of modes. Petone foreshore and Jackson St need resourcing as key city features. Seaview and other employment hubs provide key local jobs that need valuing. I have worked to see Moera and Petone library plans for enhancements progress.

I bring experience in policy, community and youth development, and have worked in local government. I live in Moera and am the chair of the Moera Community House which helps me understand local needs and challenges. I have served two terms on the Board.



### **Karen (Kaz) YUNG**

Independent

My principal place of residence is not in the Petone Community Board area. I am also standing for Hutt City Council - At Large.

Kia ora, Neih hou and Greetings,  
Born and raised in the Hutt to Chinese parents, I'm a Chiwi (Chinese-Kiwi) who is deeply passionate about local communities.

I recently moved from living in Moera to Waiwhetū, currently work in Petone and remain deeply passionate and actively engaged in the area through the Moera neighbourhood Potluck Group, as a school breakfast club volunteer; coordinating the Waiwhetū Fruit and Vege Co-op and supporting the Koha Café at the Petone Depot.

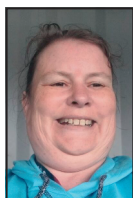
I have served two terms on the Petone Community Board and have a background in youth and community development. I have over a decade of experience in various levels of governance through not-for-profit and community sectors. I'm passionate about social justice, environmental issues and seeing our communities have a strong voice.

I hope to be re-elected to continue connecting, celebrating and advocating for our people, place and systems for a thriving future.

[www.facebook.com/kazforcommunity](http://www.facebook.com/kazforcommunity)

## Hutt City Council Wainuiomata Community Board Electing 6 Board Members

---



### **Elle ABEL**

Independent

My principal place of residence is in the Wainuiomata Community Board area.

Greetings Wainuiomata Voters

I have made Wainuiomata home for 15 years with my family.

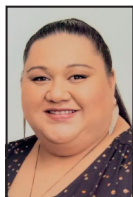
I am currently involved in coaching hockey, Community Patrol, leader in a youth organisation, playcentre and coaching cricket all in Wainuiomata. I am involved in other things as well. I will go to public meetings, I also do submissions to council, fill out surveys as well.

Supporting all people is important to me because of dealing with disabilities on a daily basis now in my family. Older people are very important as well and doing what I can to help homeless people and representing them.

I believe that all people need a voice but also they need to have a say.

I deliver the Wainuiomata Paper once a week as well to help the community.

I want to do more if elected onto the Community Board and make the Community Board more visible.



### **Lesa BINGLEY**

Independent

My principal place of residence is in the Wainuiomata Community Board area.

Three years ago, my husband Rex and I found out we were going to have a baby and were excited to buy our first home.

Like many families, our pathway brought us to Wainuiomata, and we have loved raising our family here.

I am of Tokelauan, Samoan and European descent. I have the pleasure of being a stay-at-home mum and previously worked in the insurance industry for the past decade. My husband Rex was born in Wainuiomata, attended Wainuiomata primary and is an automotive mechanic.

I love our tight knit community and as a stay-at-home mum I am stepping out of my comfort zone to stand as a candidate for the Wainuiomata Community Board.

My focus:

More recreational facilities for young people and families; More public transport services in and out of Wainuiomata; Supporting new local businesses to set up in Wainuiomata; Improved infrastructure; Safer communities.

## Hutt City Council Wainuiomata Community Board Electing 6 Board Members

---



### **Daniel CHRISP**

Independent

My principal place of residence is in the Wainuiomata Community Board area.

Kia Ora!

Raised in Waiwhetū and now living in Wainuiomata with my wife and two boys for over 7 years. I'm a 5th generation Kiwi with

whakapapa back to Gisborne.

In Wainuiomata my whanau started a Kai Cupboard; I helped start the Poole Cres community gardens and have 7 years' experience in youth work. My current mahi in cemeteries for over 6 years is where I love serving the community and have learnt so much about the cultures around me.

I have an understanding of how councils operate and the role community boards and councillors play in ensuring the voice of the community is heard. I will listen to the community, advocate for productive meetings and strive for change when needed.

I enjoy golf, woodworking and gardening in my spare time and look forward to the opportunity to korero with you in Wainuiomata soon!

<https://www.facebook.com/Chipsforchange/>



### **Leah CLARK**

My principal place of residence is in the Wainuiomata Community Board area.

My parents relocated our whanau to Wainuiomata in the mid 1960's, where I attended Wainuiomata College. I am married with 4 wonderful children and 6 Beautiful Mokopuna.

My children were students of Wood Hatton Primary, Parkway Intermediate and Parkway College (which no longer exist) and Mokopuna that attend Kura in Wainuiomata.

I have always played an active role in supporting all things local with a genuine passion for helping out in the community. For me it is all about whanau, I firmly believe that everything starts and ends with whanau. Whanau is what drives me.

My commitment to improving and revitalising Wainuiomata is demonstrated through the work I do in community groups such as Love Wainuiomata, Friends Who Care and Empower Tangata. I will not shy away from advocating for the needs of our community and holding the Board and/or Council accountable for their decisions.

## Hutt City Council Wainuiomata Community Board Electing 6 Board Members

---



### **Tamsyn HARKER**

My principal place of residence is in the Wainuiomata Community Board area.

I'm a Wainuiomata local passionate about getting residents' voices heard, and real Council action to make Wainui a great, safe, and thriving home.

To be honest, I'm tired of seeing money wasted on huge-cost/limited-benefit projects when our families and communities need common sense investment (eg imagine the difference the new Naenae pool's \$68 million(!) could make to community groups and clubs, youth intervention and development, kaumatua support, local business support, etc?)  
About me: I'm a small business owner, a counsellor (not councillor!) and coach, a past SME business consultant and volunteer with Kaibosh Food Rescue and Love Wainuiomata. I've had years of experience with local Councils through my business consulting work and subdividing our own Wainui home property.

Vote for me to shake things up and give Wainui a strong voice to make 'bang for your buck' investment in our community. Find out more at <https://tinyurl.com/wainui2022>



### **Te Awa PUKETAPU**

Independent

My principal place of residence is in the Wainuiomata Community Board area.

Te Awa is a mum of two teenagers and has lived in Wainuiomata for 40 years. She has an interest in Education and language revitalisation and is currently completing her Masters in Indigenous

Social Equity and Leadership.

Te Awa has worked in the education sector, child rights and advocacy and youth justice and care and protection systems.

Te Awa has whakapapa to Te Atiawa, Tuhoe and Ngāti Ruapani and actively involved in her local iwi activities. Alongside this, she is a member of the Pukeatua Kohanga Reo and Wainuiomata Intermediate boards and teaches Martial Arts. She runs her own business, enjoys working the land and supporting her kids sporting pursuits.

Te Awa is passionate about enabling whānau to realise their potential, having the agency to do this and smashing systemic barriers that stop whānau from succeeding. Committed to serving Wainuiomata, she invites the opportunity to do this for you all.

## Hutt City Council Wainuiomata Community Board Electing 6 Board Members

---



### **Aneterea aka Andrew SA'U**

Independent

My principal place of residence is in the Wainuiomata Community Board area.

I am a father of seven and have lived here in our beautiful community of Wainuiomata for almost twenty years.

I have a solid background in advocating for people in our community through housing and Union. I am a Pastor for our local community, helping many through counselling. I am also engaged as a volunteer Coordinator for Wainuiomata Fruit and Veggies Co-op.

Voting for me is an opportunity to represent not only our beautiful community, but the groups of minorities that may not have enough courage to speak for themselves. I bring a sense of diversity and qualities of getting things done to the best of my ability, making sure that my purpose representing you is fulfilled.

My main priorities are well-being, supporting our local small businesses and education.

I am not interested in any Political Agenda. I am running as an independent voice for our community.

Vote for action



### **Dallas SERJ-REILLY**

Independent

My principal place of residence is not in the Wainuiomata Community Board area.

Kia Ora my name is Dallas Serj. I am running for Community Board for the beautiful Wainuiomata. I have worked as a Support Worker for the past couple of years and have led some

charity groups in Wainui helping to provide programmes and options for our youth. My big focus areas for Wainui are improving the wellbeing of our youth by creating recreational options, advocating to get more local business in Wainui to ensure we don't have to travel to the Hutt for simple necessities.

I aim to be a firm, empathetic and enlightened voice for Wainui and I know I can achieve a lot in the role. I may be young but I have a lot of accomplishments in my portfolio and have been an involved member of our community for just about a decade. A vote for me would be a vote for a prosperous Wainui.

## Hutt City Council Wainuiomata Community Board Electing 6 Board Members

---



### **Gary SUE**

My principal place of residence is in the Wainuiomata Community Board area.

I wish to continue standing as a community board member to support the people of Wainuiomata and provide a strong voice to advocate for our community, home to my wife and I and our four

children.

I am currently board chair for 3 local schools. I'm the Junior Convenor for both the Wainuiomata Rugby and Softball Clubs and a junior coach. I enjoy being involved with local tamariki through sport, it's a great way to get to know more families in our community too!

I lead the Hem of Remutaka team - working to restore and protect the flora and fauna of the Wainuiomata Coast.

I want to make sure that the Community Board has proactive members for Wainuiomata, so that people can be involved in the decisions that directly impact them. If elected, I'll be there to drive the changes we need to support our wonderful Wainuiomata Community.



### **Sisi TUALA-LE'AFA**

My principal place of residence is in the Wainuiomata Community Board area.

A proud mother of three and has been a Wainuiomata resident for over 30 years. Samoan born, from a huge loving family.

Sisi is very passionate about youth & whanau wellbeing and development. She is active to advocate, advise and empower better outcomes for all.

Sisi is also an advocate for legislative change supporting young people and community groups with local and national campaigns to be informed and active change makers.

She is always working to provide opportunities for young people and Pasefika to have a political voice, and youth and Pasefika input at decision making tables.

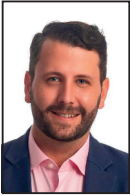
Sisi is a very passionate sportswoman and is actively involved in supporting our local talent to embrace opportunities that see them on the national stage as well as at grass roots level.

Sisi is committed to serving the community and ensuring that the communities' diversity is well represented.



## Hutt Mana Charitable Trust Lower Hutt City Electing 2 Trustees for Lower Hutt City

---



### **Campbell BARRY**

My principal place of residence is in the Lower Hutt City area. I am also standing for Mayor, Hutt City Council.

It has been a privilege to serve as a trustee for the past three years. With the rising cost of living impacting so many people and organisations across Lower Hutt, the Trust's work is more important than ever. If re-elected, my focus will be on supporting initiatives that improve economic security for our people and community groups; through energy efficiency projects, access to affordable, healthy food, or programs that lower the cost of participation in community sport and other activities. These are just a few examples of the types of initiatives I would support. In a time of economic uncertainty, the Trust must operate in a financially sustainable way. I'm committed to making sure funds continue to be managed prudently, to ensure that the Trust can continue for generations to come. I am respectfully asking for your support.

For more information visit: [campbellbarry.co.nz](http://campbellbarry.co.nz)



### **Quentin DUTHIE**

My principal place of residence is in the Lower Hutt City area. I am also standing for Greater Wellington Regional Council.

Charitable works are at the heart of our city, expressing our kindness and fairness. With grant funding, selfless ideas become life-changing actions.

I lead a charitable trust fostering community and restoring birdlife across Belmont and Kelson, where I live with my young family. I have advised Parliament on energy, healthy homes and environmental education. With your support, I will apply my values, skills and experience to pursue two goals for the public good.

First, let's give more to the community. It's sorely needed. For every \$1000 granted to charity, nearly \$400 goes in costs and fees. I will eliminate trustee fees and lower expenses to release money and change lives, donating my own remuneration to charity.

Second, let's invest ethically, ensuring the Trust earns money from companies that benefit, not harm, people and the environment. I will seek a review of the Trust's investment criteria, and ensure public transparency.

## Hutt Mana Charitable Trust Lower Hutt City Electing 2 Trustees for Lower Hutt City

---



### **Sumati GOVIND**

My principal place of residence is in the Lower Hutt City area.

I was born in Wellington but have lived in the Hutt Valley with my husband for 18 years.

I value your support and ask for your vote in the Hutt Mana Charitable Trust elections. I am

passionate about serving the community and represent a new voice, to deliver the best possible outcomes from the Trust's operations.

During my 35+ years' career I developed the ability to collaborate effectively to achieve common goals, and bring strong investment management knowledge, both necessary to manage the Trust's \$40+ million investment portfolio, to continue community giving in perpetuity.

I also bring 15+ years community governance experience, working with many diverse organisations, and truly appreciate equity grant making to make positive impact on the community. I am closely involved with the Avalon Rugby Club (3 years as the Treasurer), many years with the Wellington Indian Association and a past trustee of Hutt Community Facilities Trust.



### **Ken LABAN**

Independent

My principal place of residence is in the Lower Hutt City area. I am also standing for Greater Wellington Regional Council.

Our mission at the Hutt Mana Charitable Trust is to promote and enhance the well-being of people and organisations in our community.

The Trust area (Hutt City) distributes grant funding twice a year (March and September) in support of community activity which includes a focus on energy efficiency and warm homes.

Our investment has increased to \$43 million (up from \$39 million in 2019) and it's the interest from that investment that allows us the 2 funding rounds annually that helps us to build a strong community.

Covid was especially hard for our community and the adding of an extra Capital Funding Round helped with Recovery.

With your support I hope to continue to serve our community and be a good guardian of your money.

## Hutt Mana Charitable Trust Lower Hutt City Electing 2 Trustees for Lower Hutt City

---



### **Prue LAMASON**

Balance and Experience

My principal place of residence is in the Lower Hutt City area.

You have two votes, please make one of them for me, ensuring strong community connections, experience and more balanced representation.

The Trust is a terrific asset for the Hutt Valley, and my experience as a past trustee and deputy chair puts me in a strong position to contribute again on your behalf. We must protect and manage the \$40+ million fund correctly, so we can continue to give grants for a worthy range of community projects from across the Hutt.

We must protect these assets for the next generation and ensure grants are fair and balanced. I strongly support more investment in improving housing conditions for children and ensuring all young people who wish to, can leave school with a drivers' licence.

Funding is harder to source for many groups in our communities. Hutt Mana has always filled the gap and we must continue to do so.



### **Max SHIERLAW**

No Trustee Fees Transparent Grants

My principal place of residence is in the Lower Hutt City area.

Trustee fees for the Hutt Mana Charitable Trust are \$98,300 for the responsibility of overseeing assets worth \$45million.

By comparison, the Nikau Foundation Charitable Trust in Wellington is responsible for assets of \$80 million and the work is far more complicated, but their Trustees are volunteers.

Trustees' workload is minimal, there are only two grants rounds a year, the assets are managed by Fund Managers and a firm of Chartered Accountants undertake the administration.

I will push for Hutt Mana Trustees to undertake their responsibilities on a voluntary basis. If I am unsuccessful then I will donate 100% of my Trustee fee to charity. The Trust is mainly funding organisations that rely solely on volunteers, its Trustees should follow suit.

The way that grants are decided needs a review, with more transparency.

I am a practicing Chartered Accountant with many years of volunteer experience on community groups and sporting organisations.

## Hutt Mana Charitable Trust Lower Hutt City Electing 2 Trustees for Lower Hutt City

---



### **Tony STALLINGER**

Stop all Trustee Fees

My principal place of residence is in the Lower Hutt City area. I am also standing for Hutt City Mayor and Hutt City Council - At Large.

I'm passionate about our wonderful City and its diverse communities. I was born here and live in Belmont with my family. Being Hutt City Council's

chief executive for twelve years and volunteering on local organisations gave me a good understanding of our City. In particular, I developed appreciation and respect for the many community groups supporting our well-being in areas such as arts and culture, sports and social services.

Trustees should not receive any remuneration for supporting a charitable organisation like the HMCT. If elected, I will propose that the current excessive fees are stopped immediately. If unsuccessful with that proposal, I will donate 100% of all fees I receive to local charities identified on my website below.

I'd really appreciate your support. Let's increase grants by cutting Trustee fees.

For more information visit [www.tonystallinger.co.nz](http://www.tonystallinger.co.nz).

## Wellington Regional Council Te Awa Kairangi ki Tai/Lower Hutt Constituency Electing 3 Regional Councillors

---



### **David BASSETT**

Independent

My principal place of residence is not in the Te Awa Kairangi ki Tai/Lower Hutt Constituency area.

I ask for your #1 vote to elect me to the Regional Council to advocate on your behalf with strong and experienced representation for Lower Hutt.

When Deputy Mayor, I led major projects including strengthening Council's Administration Building and Town Hall; constructing the Event Centre, Naenae Bowling Centre, Huia Hydrotherapy Pool, redevelopment of Avalon Park and chaired Council's Finance Committee.

I jointly own a business and property/apartment in Lower Hutt.

I will focus on progressing the Melling Interchange project to improve flood protection and safer traffic and pedestrian access, sustainable quality water supply and train and bus services that are affordable and reliable.

I am committed to protecting our rivers, harbour and parks for future generations, including solutions to combat climate change.

I will focus on keeping rates down. 28 percent increase in three years is unsustainable.

I am an independent candidate and have no political party affiliation.



### **Tracey BUICK**

Independent

My principal place of residence is in the Te Awa Kairangi ki Tai/Lower Hutt Constituency area.

My sincere thanks to previous Councillors for their services. Now that it is time to be refreshing our local democracy, I stand for open dialogue and collaboration.

For water to not lose its essential quality as water is important. I am passionate about protecting our waterways and reducing contamination. I will contribute a broad minded perspective to strategic planning. I bring a depth of experience with committees and supporting local youth. Also, a professional background in reviewing State practices and policy. Lower North raised, I chose to be a parent educating with the Rudolph Steiner School in Tirohanga.

I bring a women's perspective to community engagement and balancing affordability with community needs.

I always enjoy connecting with young people, Mana Whenua and Hutt locals. Let's bring grounded viewpoints to GWRC decision making. Please contact me at [tracey358@proton.me](mailto:tracey358@proton.me) or 020 410 75103 if you would like to discuss our region's future.

## Wellington Regional Council Te Awa Kairangi ki Tai/Lower Hutt Constituency Electing 3 Regional Councillors

---

---



### Quentin DUTHIE

Green

My principal place of residence is in the Te Awa Kairangi ki Tai/Lower Hutt Constituency area. I am also standing for Hutt Mana Charitable Trust.

Working together, our communities and our environment will thrive. Councils must provide strong leadership to protect the environment and provide vital infrastructure. I bring two decades of experience to help Greater Wellington do this.

Professionally, I've provided independent, evidence-based advice on climate change, water science, and conservation. Volunteering with other caring, can-do people, I lead the award-winning Pareraho Forest Trust and the Friends of Belmont Regional Park. Family and voluntary service connect me across the city: Naenae, Western Hills, Waiwhetū, Wainuiomata, Petone and Eastbourne.

I will work towards affordable, convenient, safe, reliable transport options that work for you and protect our environment. I will strive to clean up our waterways and restore our forests and parks, to benefit us, our children and our wildlife.

With your support, I will help residents participate meaningfully in decisions: putting you at the heart of Council. Please Vote #1. [www.quentinduthie.nz](http://www.quentinduthie.nz)

Mā te mahi tahi, ka piki kōtuku. Me ārahi uekaha ngā kaunihera hei whakahaumarū taiao me te tuku hanganga waiwai. E 20 tau aku wheako hei āwhina kia pēnei.

Kua tuku tohutohu ngaio au, he motuhake, i runga i te taunaki mō te āhuarangi, te wai, te whāomoomo. Ka ārahi au i ngā hāpori kaimanaaki e rua, ki te taha o ētahi atu tāngata māia.

Kei te honoa puta noa au e te whānau me te tūao: mai Pukeatua ki Pukeariki, mai uta ki tai.

Ka mahi au kia hāpaitia ngā tereina, ngā pahī, hei oranga mō tātou, mō Papatūānuku. Ka nanaioe kia tāmatatia te mana o te wai me te hauora o te ngahere kia ora ai ā tātou tamariki, ā Tāne tamariki hoki.

Māku koe e āwhina, kia uru whitake ki ngā whakatau: te whakatō i a koe ki te ngākau o te kaunihera. Karawhiua! [www.quentinduthie.nz](http://www.quentinduthie.nz)

## Wellington Regional Council Te Awa Kairangi ki Tai/Lower Hutt Constituency Electing 3 Regional Councillors

---



### **Ken LABAN**

Independent

My principal place of residence is in the Te Awa Kairangi ki Tai/Lower Hutt Constituency area. I am also standing for Hutt Mana Charitable Trust.

I am completing my 3rd term as a Regional Councillor having previously served as a Wainuiomata Ward Councillor on the Hutt City

Council 2010 - 2013.

The Regional Council derives its funding from 2 main sources, Rates and Water Levy plus Grants and other sources (interest). In 2019, GWRC moved to declare a Climate Emergency which was a reset of priorities with ongoing goals and objectives to reduce carbon emissions and create a cleaner, greener environment.

The impact of COVID on families brought significant challenges for us as representatives to respond in a way that was thoughtful and considered.

Trying to reduce the number of cars on our roads and increasing patronage on public transport are goals I am committed to.



### **Peggy W LUKE-NGAHEKE**

My principal place of residence is in the Te Awa Kairangi ki Tai/Lower Hutt Constituency area.

Peggy is of Te Āti Awa descent and is Manager of Waiwhetu Marae. She has a long background in education and counselling and is a qualified Alcohol and Drug Counsellor.

She is now a Board member of Te Kōhanga Reo Trust Board, Chair of Kahungunu Whānau Services, Board member of Philanthropy New Zealand, Board member of Te Awakairangi Primary Health Care and Trustee of Te Rūnanga nui o Te Āti Awa.

Peggy is a mother of three and grandmother of three beautiful Mokopuna. She has lived in the Hutt Valley all her life.

Peggy is passionate about better health in the Hutt Valley for all whānau. She trained as a Counsellor and AOD Clinician and has worked for Hutt Valley DHB. Peggy worked in community mental health for six years. She has a background of 36 years in Kōhanga Reo and is very passionate about great health for all Mokopuna.

## Wellington Regional Council Te Awa Kairangi ki Tai/Lower Hutt Constituency Electing 3 Regional Councillors

---



### **Michael STEVENSON**

Independent

My principal place of residence is in the Te Awa Kairangi ki Tai/Lower Hutt Constituency area.

Born in Lower Hutt, raised in Wainuiomata, I now live in the Hutt Valley.

I am happily married with two grown children.

After having served my apprenticeship as a plumber, drainlayer and gasfitter with a small family business and attaining advanced trade qualifications, I then branched into commercial and industrial plumbing, and drainage. Now with 34 years in the plumbing industry, I have gained a substantial working knowledge of reticulated water and drainage systems.

My time in the plumbing industry and as an examination advisor has given me an unusually clear view of these challenges, and their potential solutions. I spend a lot of time in the great outdoors enjoying both conservation and gardening, and passing on these skills.

I believe in free speech and that every opinion should be heard. If elected I will do my best to make the region a better place for our children.



### **Alex VOUTRATZIS**

Labour

My principal place of residence is in the Te Awa Kairangi ki Tai/Lower Hutt Constituency area.

I'm experienced, hard-working, and passionate about our communities and environment. I'm putting my hand up for Greater Wellington Regional Council to ensure council decision-

making benefits Lower Hutt. I believe in openness, transparency, and a council that works for you.

My priorities include; accessible, affordable, and reliable public transport, rivers, and streams with clean fresh water, restoring our native biodiversity, further action on addressing climate change, and supporting local businesses transition to a zero-carbon future.

As a Petone Community Board member, I've championed additional funding for libraries, parks, road safety, and Petone Wharf.

I've worked in housing, transport, and urban planning for over ten years. With this experience, I'll immediately be ready to advocate on the matters that mean the most to us.

A vote for me ensures a collaborative, practical, and future-focused voice for you at the council table.

Make Alex Voutratzis your number 1 choice!



## Notes

---

## Notes

---

## Notes

---

## Notes

---

## Notes

---

## Notes

---

## Notes

---

## Notes

---



## Notes

---

## Notes

---

## Notes

---



**PEFC**<sup>™</sup>

PEFC/40-31-5

**PEFC Certified**

Paper from sustainably  
managed forests and  
controlled sources

[www.pefc.org](http://www.pefc.org)