

30 January 2025

Hutt City Council
Private Bag 31-912
Lower Hutt 5040
Delivered via email to: district.plan@huttcity.govt.nz

To the District Plan Review Team,

Hutt City District Plan Review – Notices of Requirement for new Hutt City Council designations

Pursuant to Schedule 1 (Clause 4) of the Resource Management Act 1991, please find attached a notice of requirement (NOR) for proposed additional designations to be included in the proposed Hutt City District Plan.

The NOR is for a number of existing and established three waters related assets in Hutt City for which Hutt City Council is the requiring authority. Designation of all of these assets recognises their important role and helps ensure the on-going security and resilience of essential three waters services in the City.

There are no specific projects intended to be covered by the NOR; these would be subject to the usual resource consent requirements until such time as the designations were in place and/or an outline plan of works or designation alteration as required once the designations are in place.

Yours sincerely,



Bruce Hodgins
Strategic Advisor
Hutt City Council

Notice of requirement for three waters related designations in Hutt City

January 2025



FORM 20

Notice of territorial authority's requirement for designation under section 168A and Schedule 1(4)(6) of the Resource Management Act 1991

To: district.plan@huttcity.govt.nz

From: Hutt City Council

Notice of Requirement

Pursuant to sections 168A and Schedule 1(4)(6) of the Resource Management Act 1991 (RMA), Hutt City Council gives notice of a requirement that designations for a number of existing sites used for the provision of water supply and wastewater treatment, are required to be included in the proposed Hutt City District Plan.

Confirmation of the relevant, designation purpose, address and legal description, are included in **Table 1**. Further detail is provided in the accompanying report.

The sites to which the requirement applies

Refer to **Table 1**.

The nature of the proposed public work

All but two of the new proposed designations are for existing, established infrastructure which form critical elements of the Hutt City Council's current three waters network.

Designation of all of these assets recognises their important role and helps ensure the on-going security and resilience of essential three waters services in the district. Designation of these sites will support the ongoing maintenance, upgrade and replacement of the infrastructure as required for the continued provision and evolution of water services to meet the existing and future needs of the community.

The effects that the public work will have on the environment, and the ways in which any adverse effects will be mitigated

Refer to Section 5 in the attached report.

Consideration of alternative sites, routes, and methods

The sites proposed to be designated are operational sites and form an existing part of the three waters network in Hutt City. As such it is not practicable or necessary to consider alternative sites, routes, or methods for these sites as part of this Notice.

Reasons for the Requirement

Hutt City Council is a requiring authority under section 166 of the Resource Management Act 1991 (the Act). The designation of the sites in **Table 1** are reasonably necessary for achieving the objectives of the requiring authority because the designations will assist the Hutt City Council in its objectives to manage and maintain a safe and efficient three waters network in Hutt City.

Designation is an effective long term planning protection mechanism that allows Council to operate, maintain and improve essential three water related assets and provides certainty as to the nature of works Council can carry out on any particular site.

The following consultation has been undertaken with parties that are likely to be affected
Refer to Section 7 in the Notice of Requirement report.

Table of Contents

1. Introduction	5
2. Description of the sites to which this notice applies	5
2.1 Wastewater Pumping Stations	8
2.1.1 Esplanade Central Wastewater Pumpstation	8
2.1.2 Esplanade West Wastewater Pumpstation	9
2.1.3 Wellington Road Wastewater Pumpstation	9
2.1.4 Marine Parade Wastewater Pumpstation	10
2.2 Stormwater Pumping Stations	10
2.2.1 Te Mome Stormwater Pumpstation	10
2.3 Water Supply Storage	11
2.3.1 Gawler Grove Water Supply Reservoir	11
2.3.2 Gracefield Water Supply Reservoir	12
2.3.3 Kingsley Water Supply Reservoir	12
2.3.4 Manor Park Water Supply Reservoir	13
2.3.5 Maungaraki Water Supply Reservoir	13
2.3.6 Normandale Water Supply Reservoir	14
2.3.7 Point Howard water supply reservoirs	14
2.3.8 Rata Street Water Supply Reservoir	15
2.3.9 Taita Water Supply Reservoir	16
3. Proposed designated purpose	17
4. Statutory Assessment	17
4.1 Part 2 Purpose and Principles of the RMA	17
4.2 National Policy Statements	18
4.2.1 New Zealand Coastal Policy Statement (NZCPS) 2010	18
4.2.2 National Policy Statement on Urban Development Capacity 2020	18
4.2.3 National Policy Statement for Freshwater Management 2020	18
4.3 Wellington Regional Policy Statement	18
4.4 Operative Hutt City District Plan	19
4.4.1 Objectives and Policies	19
4.4.2 District Plan Zoning and Overlays	20
5. Effects on the environment	21
5.1 Positive effects	21
5.2 Wastewater pumping station effects	22
5.2.1 Discharges to air and water	22
5.2.2 Visual effects	22
5.2.3 Noise effects	22
5.2.4 Traffic effects	22
5.3 Stormwater pumping station effects	23
5.3.1 Discharges to water	23
5.3.2 Visual effects	23

5.3.3	Noise effects	23
5.3.4	Traffic effects	23
5.4	Water Supply Storage Effects.....	23
5.4.1	Visual effects.....	23
5.4.2	Effects on Significant Natural Resources	24
5.4.3	Noise effects	24
5.4.4	Traffic effects	24
6.	Additional resource consents required	24
7.	Consultation.....	24
8.	Other Matters	25
 Appendix A: Maps showing proposed designation areas.....		26

1. Introduction

This Notice of Requirement (NoR) is submitted by Hutt City Council (HCC) for the designation of a number of existing operational three water asset related sites within Hutt City. These comprise of wastewater and stormwater pumping stations, and water supply reservoirs.

These assets are all critical components in ensuring the provision of a well-functioning three waters network in the Hutt Valley. This network is essential for Hutt City communities to function.

Many of Hutt City's key water assets are already designated in the operative Hutt City District Plan. However, there are a number that are not. Designating these sites addresses these gaps for consistency, recognises their importance to the community and supports their longer-term ability to function effectively.

HCC is a Requiring Authority pursuant to section 166 of the RMA and has financial responsibility for water related infrastructure assets and asset development programmes within Hutt City.

These assets are managed by Wellington Water Limited, the Wellington region's professional water services provider. Wellington Water manages drinking water, wastewater, and stormwater services on behalf of six councils, including HCC.

2. Description of the sites to which this notice applies

Details of the sites are provided in **Table 1** below, including location and landowner details. The remainder of section 2 provides more detailed descriptions of the individual sites and their associated infrastructure.

Table 1 Schedule of existing sites to be designated

Asset Name/ Name of designation	Site identifier		Designation Purpose	Designation hierarchy (s177 of the RMA)	Landowner
	Address	Legal Description			
Esplanade Central Wastewater Pumpstation	160 The Esplanade PETONE	LOT (RES) 2 DP 69217	Operation, maintenance, and improvement of a wastewater pumping station	Primary	Hutt City Council
Esplanade West Wastewater Pumpstation	The Esplanade PETONE	LOT 1 DP 69217	Operation, maintenance, and improvement of a wastewater pumping station	Primary	Hutt City Council
Wellington Road Wastewater pumpstation	55N Wellington Road WAINUIOMATA	Part Lot 138 DP 14784/ LOT (RES) 224 DP 14784	Operation, maintenance, and improvement of a wastewater pumping station	Primary	Hutt City Council
Marine Parade Wastewater Pumpstation	14 Marine Parade PETONE	LOT 15 DP 29182	Operation, maintenance, and improvement of a wastewater pumping station	Primary	Hutt City Council
Te Mome Stormwater Pumpstation	56 Wakefield Street ALICETOWN Next to Ava station.	LEASE 41771 LOT 1 DP 73017 WATER SERVICES 40A/572	Operation, maintenance and improvement of a stormwater pumping station	Primary	Emerald NZ Limited (pump station is subject to a lease)
Kingsley Water supply Reservoir	29 Robson Street STOKES VALLEY	LOTS 4 & 6 DP 27329 RESERVOIR CT 632935 & WNF2/1155	Operation, maintenance and improvement of a water storage and distribution facility	Primary	Hutt City Council
Manor Park Water Supply Reservoir	11 Haywards Hill Road HAYWARDS	Pt SEC (RES) 197 HUTT DISTRICT SO 32542	Operation, maintenance and improvement of a water storage and distribution facility	Secondary	Hutt City Council
Gracefield Water Supply Reservoir	93 Wainui Road WAIWHETU	Section 1 SO 304000 (& SEC 5 SO 437413 CT26635 & CT 577054)	Operation, maintenance and improvement of a water storage and distribution facility	Primary	Hutt City Council

Asset Name/ Name of designation	Site identifier		Designation Purpose	Designation hierarchy (s177 of the RMA)	Landowner
	Address	Legal Description			
Maungaraki water supply Reservoir	6N Honeysuckle Grove MAUNGARAKI	LOT 122 DP 28287 PS 48 ACC NO 44001 WATERWORKS WATER SERVICES	Operation, maintenance and improvement of a water storage and distribution facility	Primary	Hutt City Council
Point Howard water supply reservoir	87 Howard Road POINT HOWARD	PT LOT 1 DP 27770 - RESERVOIR/PT LOT 1 DP 27770 BALANCE AT 15890-2 HOWARD RD	Operation, maintenance and improvement of a water storage and distribution facility	Primary	Hutt City Council
Rata Street water supply reservoir	255 Rata Street NAENAE (Rata Reservoir Driveway at end of Rata Street past Hay Street junction)	PT LOT 1 DP 14660	Operation, maintenance and improvement of a water storage and distribution facility	Primary	Land the reservoir is located is owned by Wesley Wtgn Mission Inc. The access road is partially on HCC land.
Taita water supply reservoir	60 Eastern Hutt Road TAITA (Taita Reservoir Driveway off 178 Eastern Hutt Road Taita)	LOT 3 DP 83794 SUBJ TO AND INT IN ROW 50D/743	Operation, maintenance and improvement of a water storage and distribution facility	Primary	Hutt City Council
Normandale water supply reservoir	129N Normandale Road NORMANDALE	LOT 1 DP 16613 LOT 15 DP 14851 OFF NORMANDALE RD 576/123&606/121	Operation, maintenance and improvement of a water storage and distribution facility	Primary	Hutt City Council
Gawler Grove water supply reservoir	Gawler Grove, WAINUIOMATA	Lot 1 DP 49043	Operation, maintenance and improvement of a water storage and distribution facility	Primary	Hutt City Council

2.1 Wastewater Pumping Stations

Hutt City's wastewater pump stations provide an essential role in the overall wastewater transport and treatment network. They help transport wastewater to the wastewater treatment plant, particularly when it needs to move from low-lying areas into higher ground where gravity cannot help with the flow. Wastewater pump stations also help move excess fluid during times of peak flow and during the wet weather season.

A wastewater pumping station is made up of an underground wet well that collects wastewater. The wet well contains electrical instrumentation to detect wastewater levels. Once the wastewater reaches a predetermined level in the well, a pump is activated which pressurises the wastewater so that it travels upwards and out of the wet well. The wastewater then collects with wastewater from other areas and enter the main wastewater pipe on its way to the treatment plant. Some pumpstations also include buildings above ground which contain electrical and other equipment necessary for the functioning of the pump station. Wastewater pump stations need to be regularly monitored and maintained. Most wastewater pump stations are equipped with remote monitoring systems which enables operators to keep track remotely. There is a regular maintenance programme for all the pumping stations to ensure the system is working efficiently.

Wastewater from all of the following pump stations is pumped to Seaview wastewater treatment plant. These sites are all unmanned and monitored by a SCADA system.

2.1.1 Esplanade Central Wastewater Pumpstation

A pump station has been operational on this site since 1967. This pump station collects wastewater from Petone and upper Alicetown via gravity and pumps it towards the Seaview wastewater treatment plant via the pressurised trunk main. There are no designed overflows from the site.



Figure 1 Esplanade Central Wastewater Pumpstation

2.1.2 Esplanade West Wastewater Pumpstation

This pump station was constructed in 1969. It collects wastewater from western Petone and Korokoro via gravity and pumps it towards the Seaview wastewater treatment plant via the pressurised trunk main. There are no designed overflows from the site.



Figure 2 Esplanade West Wastewater Pumpstation

2.1.3 Wellington Road Wastewater Pumpstation

This pump station was constructed in 1979. It collects wastewater via gravity from Wainuiomata, and pumps it into the pressurised trunk main which goes through the Wainuiomata Hill towards the Seaview wastewater treatment plant. In the event of a wet weather event that exceeds the pumps capacity, it is designed to overflow into Black stream. This discharge is covered by regional consent requirements as outlined in section 5.2.1.

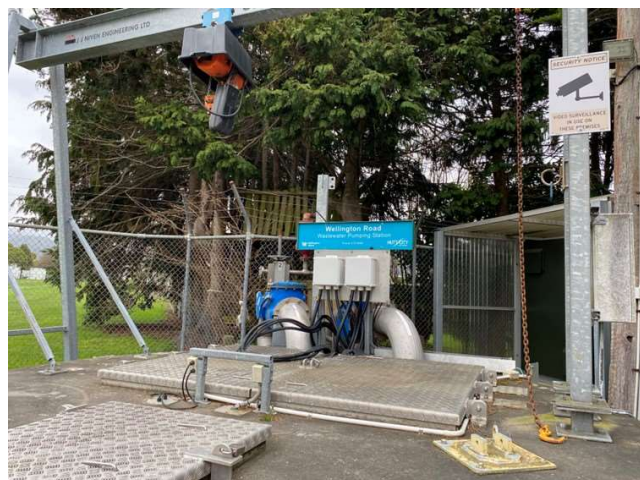
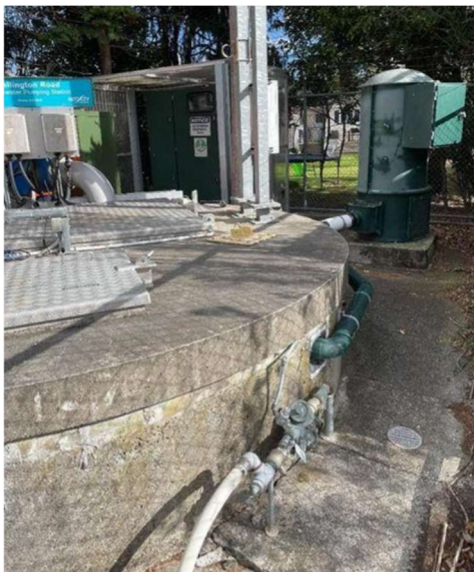


Figure 3 Two views of Wellington Road Wastewater Pumpstation

2.1.4 Marine Parade Wastewater Pumpstation

This pump station was constructed in 1976. It collects wastewater from lower eastern Petone via gravity and pumps it towards the Seaview wastewater treatment plant in the pressurised trunk main. There are no designed overflows from the site.



Figure 4 Marine Parade Wastewater Pumpstation

2.2 Stormwater Pumping Stations

The Hutt City stormwater network collects and diverts stormwater from buildings and roads and discharges it into naturally forming waterways. Stormwater pumping stations are required to drain low points in the network where stormwater would otherwise pool. They collect stormwater from low points and push it towards the waterways. They work on a similar principle to the wastewater pump stations; an underground wet well collects stormwater and contains electrical instrumentation to detect water levels. Once the water reaches a predetermined level in the well, a pump is activated which pressurises the water so that it travels upwards and out of the wet well.

2.2.1 Te Mome Stormwater Pumpstation

This pump station was constructed in 1968 and is situated on Wakefield Street directly adjacent to Ava Railway Station.. A masonry block building was added in the 1990s. The pump station collects stormwater via gravity from Petone and Alicetown and pumps it into the Hutt River.



Figure 5 Te Mome Stormwater Pumpstation

2.3 Water Supply Storage

Hutt City buys treated water from Greater Wellington Regional Council (GWRC) and distributes it via a network of underground pipes, storage reservoirs and pumping stations.

Drinking water storage reservoirs provide a critical buffer storage function to minimise the risk of loss of service following unexpected disruption to the water supply, as well as ensuring there is enough water during the peak summer demand period and providing enough water for firefighting. Following a significant seismic event, resilient reservoirs provide an important function to support the community through emergency, survival, and recovery phases.

All reservoirs have scour points to enable them to be emptied in the event of an inlet valve failing or a fault with the programmable logic controller. If the reservoirs need to be emptied, the water discharges into the stormwater network.

2.3.1 Gawler Grove Water Supply Reservoir

This reservoir was constructed in 1970. It has a capacity of 3900m³ and services significant parts of Wanuiomata.



Figure 6 Gawler Grove Reservoir

2.3.2 Gracefield Water Supply Reservoir

This reservoir was constructed in 1963. It has a capacity of 5600 m³ and services eastern Hutt including Gracefield, Waiwhetu and Waterloo.

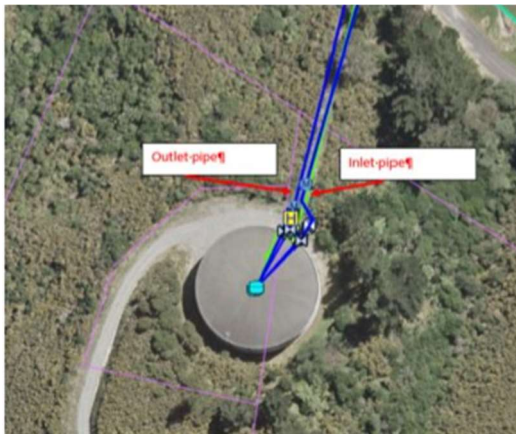


Figure 7 Gracefield Water Supply Reservoir



Figure 8 Gracefield Water Supply Reservoir

2.3.3 Kingsley Water Supply Reservoir

Kingsley Reservoir was constructed in 1955. The reservoir has a storage capacity of 1,920 m³ and services the Stokes Valley area.



Figure 9 Kingsley Reservoir

2.3.4 Manor Park Water Supply Reservoir

This reservoir was constructed in 1980. It has a capacity of 230 m³ and services the suburb of Manor Park. The site is covered by the NZ Transport Agency designation TNZ 4 for State Highway 58. As such, the Manor Park reservoir designation would be a secondary designation. Refer to Section 7 for correspondence with NZTA on this matter.



Figure 10 Manor Park Water Reservoir

2.3.5 Maungaraki Water Supply Reservoir

This reservoir was constructed in 1962 and has a capacity of 5450 m³. It services the suburbs of Maungaraki and parts of Normandale.



Figure 11 Maungaraki water supply reservoir

2.3.6 Normandale Water Supply Reservoir

This reservoir was constructed in 1955 and has a capacity of 730m³. It services Normandale and Harbour View area. There is also a pump station on site. This takes water from the Normandale reservoir and pumps it to the Maungaraki reservoir.



Figure 12 Normandale water supply reservoir

2.3.7 Point Howard water supply reservoirs

There are two reservoirs currently on this site; one constructed in 1932 and the other 1965. They have a capacity of 2235m³ and 3875 m³ respectively and service parts of the eastern bays.



Figure 13 Point Howard Water Supply Reservoirs

2.3.8 Rata Street Water Supply Reservoir

This reservoir was constructed in 1971 and has a capacity of 130m³ and services parts of Naenae. The reservoir tanks sit on Wesley Wellington Mission Incorporated land with the access road on a mixture of Wesley Wellington Mission and HCC land (refer to Figure 15).



Figure 14 Rata Street Water Supply Reservoir



Figure 15 Land ownership - Rata Steet reservoir

2.3.9 Taita Water Supply Reservoir

This reservoir was constructed in 1963. It has a capacity of 5530m³ and services the suburb of Taita.



Figure 16 Taita Water Supply Reservoir

3. Proposed designated purpose

The purpose for each of the proposed designations are outlined in Table 1.

The designation purpose for each site includes improvement as well as operation and maintenance, to reflect the fact that the long term operation of these assets may necessitate additional work beyond maintenance to increase the capacity, operational efficiency, security, or safety of existing infrastructure. It is noted that there are no specific upcoming projects that this is intended to cover, and any future physical work not permitted by the District Plan would require an outline plan or potentially an alteration to a designation.

No conditions are proposed for the proposed designations. This is consistent with the other existing similar three waters related designations in the current Hutt District Plan and reflective of the fact that there are no effects that are not already being addressed by regional consents that require conditions to manage them.

4. Statutory Assessment

4.1 Part 2 Purpose and Principles of the RMA

Part 2 of the RMA (sections 5-8) sets out the RMA purpose and principles. The following aspects are relevant to this NOR.

The designation is in accordance with Section 5 (Purpose) as it promotes the sustainable management of natural and physical resources. The water assets subject to this requirement are critical physical resources essential to enabling the social and economic wellbeing of the Hutt City communities.

There are no significant adverse effects arising from these designations as the facilities and structures are either already existing, addressed by regional consents and no works are proposed as part of this NOR. Outline Plans may be required to be submitted to HCC for any future works and will need to detail how any adverse effects on the environment will be avoided, remedied or mitigated.

Regarding Matters of National Importance (s6 RMA), S6(e) the relationship of Maori and their culture and traditions with their ancestral lands, water, sites, waahi tapu, and other taonga is considered relevant. The proposed designations do not conflict with the principles of the Treaty of Waitangi. HCC's water services provider, Wellington Water, is required to give effect to Te Mana o te Wai. Te Mana o te Wai is embedded as a fundamental concept in the management of water under the National Policy Statement for Freshwater Management, and giving effect to Te Mana o te Wai is a requirement of water services providers under the Water Services Act, overseen through Taumata Arowai.

Wellington Water carries out this duty by working with iwi mana whenua within its area of operations to understand and give effect to their expressions of Te Mana o te Wai. This includes the aspiration to begin long term strategy and planning processes from a position of understanding iwi priorities, through to working with iwi on service delivery.

In terms of s7 RMA Other Matters, the designations represent the efficient use of already established assets to provide for their ongoing operation and improvement s7(b).

4.2 National Policy Statements

The following National Policy Statements (NPS) are considered relevant to this NOR:

4.2.1 New Zealand Coastal Policy Statement (NZCPS) 2010

When considering a requirement for a designation a territorial authority must, subject to Part 2 of the RMA, consider the effects on the environment of allowing the requirement, having particular regard to, amongst other things, any relevant provisions of the NZCPS.

Designating the sites subject to this NOR will have no material effect on the NZCPS policies and objectives. Potential adverse effects on the coastal environment from three waters infrastructure are largely limited to effects associated with stormwater discharges, and wastewater treatment and disposal. None of the assets being designated involve activities or discharges of this nature.

4.2.2 National Policy Statement on Urban Development Capacity 2020

The NPS-UD 2020 recognises the national significance of:

- having well-functioning urban environments that enable all people and communities to provide for their social, economic, and cultural wellbeing, and for their health and safety, now and into the future
- providing sufficient development capacity to meet the different needs of people and communities.

The sites subject to this NOR are all key components of the wider water services network. An ongoing ability to operate maintain and improve these services is critical to support well-functioning urban environment and provide future development capacity.

4.2.3 National Policy Statement for Freshwater Management 2020

The National Policy Statement for Freshwater Management (NPS-FS) recognises the national significance of freshwater for all New Zealanders and Te Mana o te Wai. Wellington Water on behalf of Hutt City is required to give effect to Te Mana o te Wai and is working with iwi mana whenua within its area of operations to understand and give effect to their expressions of Te Mana o te Wai. This includes the aspiration to begin long term strategy and planning processes from a position of understanding iwi priorities, through to working with iwi on service delivery. Wellington Water also actively engages with iwi as part of regional consenting processes associated with addressing effects associated with the three water assets it manages.

4.3 Wellington Regional Policy Statement

The Regional Policy Statement for the Wellington region Policies 7 and 39 are particularly relevant to this NOR.

Policy 7 of the Wellington Regional Policy Statement requires district and regional plans to recognise the social, economic, cultural and environmental benefits of regionally significant infrastructure. This includes maintaining public health and safety through the provision of essential services which covers the supply of potable water, the collection and transfer of sewage and stormwater.

Policy 39: requires particular regard to be given to the social, economic, cultural and environmental benefits of regionally significant infrastructure when considering an application for a notice of requirement.

4.4 Operative Hutt City District Plan

4.4.1 Objectives and Policies

Chapter 13, the ‘Network Utilities’ Chapter of the District Plan recognises that the network utilities provide the *‘infrastructure which enables a community to undertake its everyday activities and functions and allows people to provide for their social and economic wellbeing, and their health and safety’*.

Objectives and policies relevant to this NOR are outlined in the table below:

Table 2 Relevant Hutt District Plan objectives and policies

Objective/ policy	Comment
Objective 13.1.1 Regionally significant network utilities: To recognise and protect the benefits of regionally significant network utilities	Designating significant network utilities such as the subject water assets acknowledges their importance.
Policy 13.1.1 (a) - To identify regionally significant network utilities within the City on Council planning maps, as practicable.	All designated assets will be identified in the district plan designation schedule and on the planning maps
Policy 13.1.1 (b) To recognise the national, regional and local benefits of regionally significant network utilities.	Designating significant network utilities such as the subject water assets acknowledges their importance for the community.
Objective 13.1.2: To ensure the operation, maintenance, upgrading and development of regionally significant network utilities is not compromised by other activities.	Designations provide a measure of protection from third party activities as they are noted in the district plan and the requiring authority’s permission is required to understand other activities on that site.
Policy 13.1.2 (a) To avoid, or as appropriate, remedy or mitigate, the potential for any adverse effects, including reverse sensitivity effects on regionally significant network utilities from incompatible new subdivision, use and development occurring under, over or adjacent to regionally significant network utilities.	As above.
Objective 13.1.3 Recognizing and providing for network utilities: To recognise and provide for the sustainable, secure and efficient use, operation and development of network utilities within the city.	Designations help provide long term planning security for critical network utilities.
13.1.3 Policy a. To recognise and provide for the: i. need for new and the maintenance and upgrading of existing network utilities ;	Designating these existing water assets aligns with the intent of these policies to recognise they provide for the ongoing provision of network utilities and their maintenance and upgrading. Policy 13.1.3(d) encourages the use of appropriate use of designations for network

<p>ii. technical and operational requirements and constraints of network utilities in assessing their location, design, development, construction and appearance; and</p> <p>iii. benefits that network utilities provide to the economic, social and cultural functioning of the City.</p> <p>b. To enable the efficient construction, installation, operation, upgrading and maintenance of network utilities.</p> <p>c. To ensure that the provision and operation of utilities that cross jurisdictional boundaries is managed in an integrated manner.</p> <p>d. To encourage the appropriate use of designations for new network utilities and extensions to existing network utilities that are not designated.</p>	<p>utilities. Many of the critical water assets in the Hutt are already designated. Designating these assets improves consistency of the use of this tool for Hutt City’s key water assets.</p>
--	---

4.4.2 District Plan Zoning and Overlays

Table 3 notes the current zoning and overlays associated with the sites subject to this NoR. The sites are in a range of zones and subject to a number of overlays including Significant Natural Resource areas (SNRs). Irrespective of zoning and/or overlays, It is critical to note that these assets have a functional need to be located where they are. This need is recognised by the operative District Plan as noted in Table 2).

Table 3 Assets to be designated and associated Operative Hutt City District Plan zoning and overlays

Asset Name	Address	Zone /overlays
Esplanade Central Wastewater Pumpstation	160 The Esplanade, Petone	<ul style="list-style-type: none"> Special Recreation Zone
Esplanade West Wastewater Pumpstation	The Esplanade, Petone	<ul style="list-style-type: none"> Special Recreation Zone
Wellington Road Wastewater pumpstation	55N Wellington Road, Wainuiomata	<ul style="list-style-type: none"> General Residential and General Recreation
Marine Parade Wastewater Pumpstation	14 Marine Parade, Petone	<ul style="list-style-type: none"> General Business Zone
Te Mome Stormwater Pumpstation	56 Wakefield Street, Alicetown	<ul style="list-style-type: none"> High Density Residential Adjacent to KiwiRail’s designation NZR 3 (no overlaps)
Kingsley Water supply Reservoir	29 Robson Street, Stokes Valley	<ul style="list-style-type: none"> General residential Partial coverage of SNR 50 (Stokes Valley Bush)

Asset Name	Address	Zone /overlays
Manor Park Water Supply Reservoir	11 Haywards Hill Road	<ul style="list-style-type: none"> • General Recreation Zone • SNR 17 (Haywards Shrubland) • Regional Park • NZTA's designation TNZ 4 extends over the site
Gracefield Water Supply Reservoir	93 Wainui Road, Waiwhetu	<ul style="list-style-type: none"> • Passive Recreation Zone • SNR 12 (Eastern Hills Bush)
Maungaraki water supply Reservoir	6N Honeysuckle Grove Maungaraki	<ul style="list-style-type: none"> • General Recreation Zone • Regional Park
Point Howard water supply reservoirs	87 Howard Road, Point Howard	<ul style="list-style-type: none"> • General Recreation Zone • Regional Park
Rata Street water supply reservoir	255 Rata Street, Naenae	<ul style="list-style-type: none"> • Landscape protection • SNR 12 (Eastern Hills Bush)
Taita water supply reservoir	60 Eastern Hutt Road TAITA (Taita Reservoir Driveway off 178 Eastern Hutt Road Taita)	<ul style="list-style-type: none"> • Passive Recreation
Normandale water supply reservoir	129N Normandale Road, Normandale	<ul style="list-style-type: none"> • General Residential
Gawler Grove water supply reservoir	85A Moores Valley Road, Wainuiomata	<ul style="list-style-type: none"> • Passive Recreation • SNR 34 (Mowlem Bush)

5. Effects on the environment

This NoR does not involve the construction of any new or additional public or other work, it seeks to formalise designations over existing operative sites and assets. The effects of the operation of these existing assets form part of the existing environment. The establishment of the sites was otherwise previously approved under previous relevant district plans (or previous equivalent). However, for completeness a summary of effects is provided below.

5.1 Positive effects

All the assets subject to this NOR form a part of the wider water infrastructure network that enable the delivery of essential water services which are essential for Hutt City communities to function. Designating these sites recognises their importance to the community and supports their longer-term ability to function effectively.

5.2 Wastewater pumping station effects

Relevant assets proposed to be designated:

- Esplanade Central Wastewater Pumpstation
- Esplanade West Wastewater Pumpstation
- Wellington Road Wastewater Pumpstation
- Marine Parade Wastewater Pumpstation

5.2.1 Discharges to air and water

Of the sites to be designated, only Wellington Road Wastewater pumpstation has a designed overflow discharge of wastewater. This discharges to Black Stream during extreme wet weather events.

Effects associated with this discharge are managed via regional consent WGN 010101 (20893). This consent expired in 2019. However, prior to its expiry, a consent application for discharges for a number of specific sites in Hutt City (including Wellington Road) was lodged with Greater Wellington Regional Council. As a result of subsequent discussions with GW an 'all of Hutt Valley' consent application (rather than site specific) was lodged in 2023. Discharges from Wellington Road continue to operate under the requirements of WGN 010101 (20893) under s124 of the RMA until such time as the new resource consent is granted.

Odour can sometimes be associated with wastewater pumping stations (associated with the wet well vents). Wellington Water has odour management plans to manage this issue and employs two methods to minimise odour; bark beds and carbon filters. Scour air from the wet well is pumped through the bark beds or filters and the hydrogen sulfide (H₂S) reacts with the carbon in these systems which neutralises the odour.

5.2.2 Visual effects

Visual effects associated with pump stations are de minimis. Much of the infrastructure is below ground. Above ground typical infrastructure includes buildings, tanks, pipework, and other ancillary equipment which are not significant in scale. The designation envelopes for the reservoirs have been largely restricted to the immediate areas associated with the key assets and some cases the access road.

5.2.3 Noise effects

Noise generated by the operation of the pumps is managed through the speed and configuration of pumps and sound proofing where practicable. Noise associated with the operation of pumps is not significant and the effects are considered to be less than minor.

5.2.4 Traffic effects

The traffic effects associated with operation and maintenance of the pumping stations are considered to be de minimis. They are operated remotely and personnel are not usually on site. They are accessed once a month for inspection purposes although additional visits may be required if maintenance activities are required, however these traffic movements would generally be the same or less than those associated with surrounding sites.

5.3 Stormwater pumping station effects

Relevant existing assets proposed to be designated:

- Te Mome Stormwater Pumpstation

5.3.1 Discharges to water

There are no discharges to water from Te Mome pumpstation to the environment. Stormwater stored in the wet well is pumped back into the reticulated stormwater network. Stormwater discharges from the network to the environment (downstream of the pumping station) are subject to regional consent WGN180027.

5.3.2 Visual effects

Visual effects associated with pump stations are de minimis. Much of the infrastructure is below ground. Above ground typical infrastructure includes buildings, tanks, pipework, and other ancillary equipment which are not significant in scale.

5.3.3 Noise effects

Noise effects associated with the operation of the pumps managed through the speed and configuration of pumps and sound proofing where practicable. The Te Mome pumps are underground which helps muffle any potential noise.

5.3.4 Traffic effects

The traffic effects associated with operation and maintenance of the pumping stations are considered to be de minimis. They are operated remotely and personnel are not usually on site. They are accessed once a month for inspection purposes although additional visits may be required if maintenance activities are required, however these traffic movements would generally be the same or less than those associated with surrounding sites.

5.4 Water Supply Storage Effects

Relevant existing assets proposed to be designated:

- Kingsley Water Supply Reservoir
- Manor Park Water Supply Reservoir
- Gracefield Water Supply Reservoir
- Maungaraki Water Supply Reservoir
- Point Howard Water Supply Reservoir
- Rata Street Water Supply Reservoir
- Taita Water Supply Reservoir
- Normandale Water Supply Reservoir
- Gawler Grove Water Supply Reservoir

5.4.1 Visual effects

Existing infrastructure includes water reservoir tanks, sheds, pipework, and other ancillary equipment. The tanks subject to this NOR vary in size; and some are relatively large. Because of the

need to site the tanks on hillsides, most sit on benched areas which sets them into the hill and reduces their visibility. In most instances the sites are surrounded by vegetation which provides some screening.

5.4.2 Effects on Significant Natural Resources

Some of the water reservoirs are in Significant Natural Areas (SNRs) as identified in the Hutt City Operative District Plan or adjacent to a regional park (refer to Table 3). The ongoing operation and maintenance of these assets has minimal impacts on the values associated with these areas which are typically associated with the vegetated areas surrounding but beyond the reservoir sites rather than the reservoir sites themselves which are typically grassed or paved to enable site access for operational and maintenance purposes. No new works are proposed as part of this NOR. These would be subject to an outline plan of works or alteration to a designation if the sites were designated and any effects on the surrounding environment would need to be assessed and avoided, remedied or mitigated.

5.4.3 Noise effects

There are no notable sources of noise at any of these water reservoir sites. Some reservoir sites also have pump stations in situ (for example Normandale Reservoir) which make noise when they are in operation. However, noise levels associated with these pumps are of a minor nature and effects are de minimis.

5.4.4 Traffic effects

The traffic effects associated with operation and maintenance of the reservoir sites are considered to be de minimis. They are operated remotely and personnel are not usually on site. They are accessed once a month for inspection purposes although additional visits may be required if maintenance activities are required, however these traffic movements would generally be the similar to access to surrounding sites.

6. Additional resource consents required

Some assets subject to this notice of requirement are also subject to resource consents granted by Greater Wellington Regional Council for aspects of their operation (refer to section 5 for details). The designation of these assets will not impact on the need for, or compliance with any existing or future regional consents.

Any future regional resource consents applications will require an assessment of effects on the environment to be carried out commensurate with the nature and scale of the proposed works irrespective of the designated status.

7. Consultation

Consultation has been commensurate with the fact that the effects of these existing assets are known, form part of the existing environment and will not change as a result of the designation.

Table 4 outlines the engagement undertaken to date.

Table 4 Consultation

Site	Consultation
Te Mome Stormwater Pump Station	The pump station is located in land leased by HCC from Emerald NZ Limited. Emerald NZ were advised by HCC in writing (via email) of the proposal to designate the site on 5th September 2024.
Rata Street Reservoir	The water reservoir is located on land owned by the Wesley Wellington Mission Incorporated. The Wesley Mission were advised by HCC via phone and in writing (via email) of the proposal to designate the site on 17 th September 2024 and subsequently provided feedback to HCC on the proposed area to be designated. The area proposed in this NOR reflects this feedback.
Manor Park Reservoir	The Manor Park Reservoir is covered by the NZ Transport Agency (NZTA) designation TNZ 4 for State Highway 58. Discussions with NZTA in September 2024 have confirmed that they have no concerns with HCC designating the Manor Park Reservoir on the basis that the HCC designation would be secondary (as proposed in this NOR).

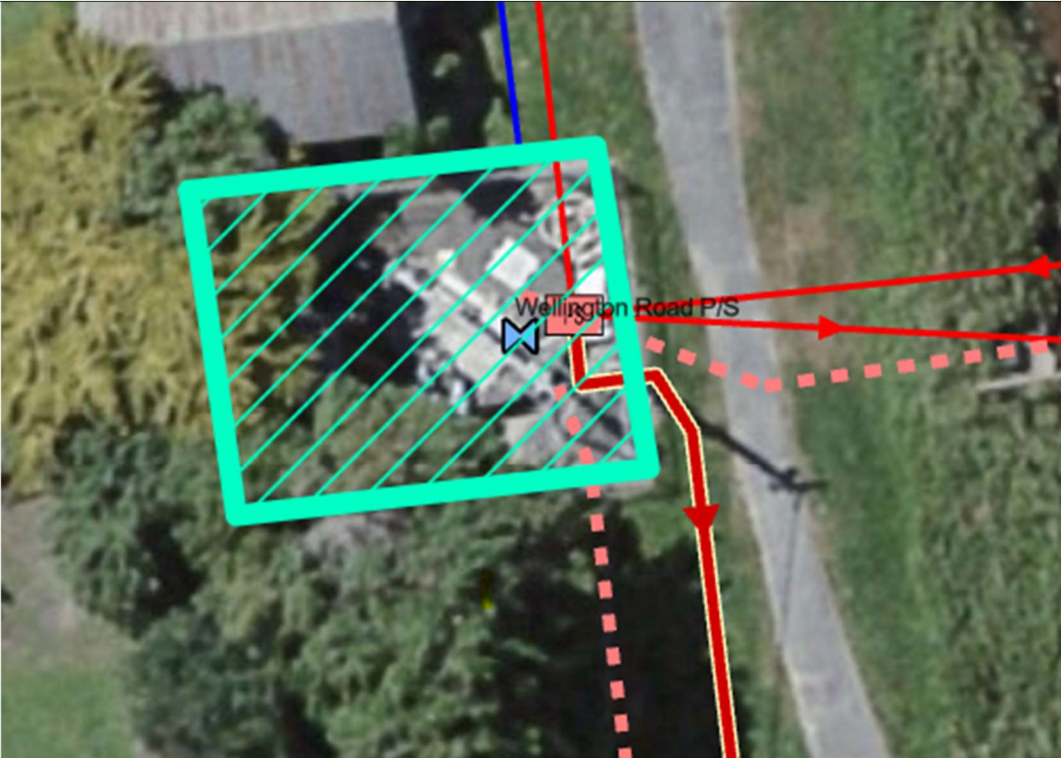
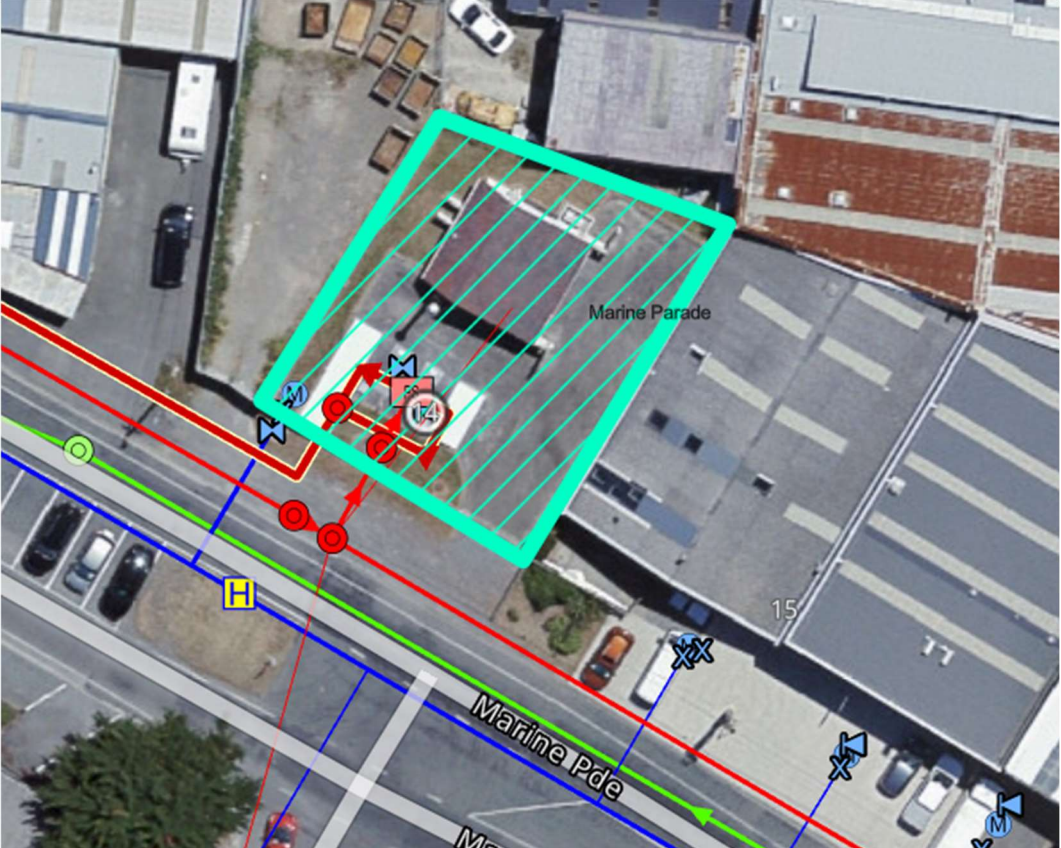
8. Other Matters

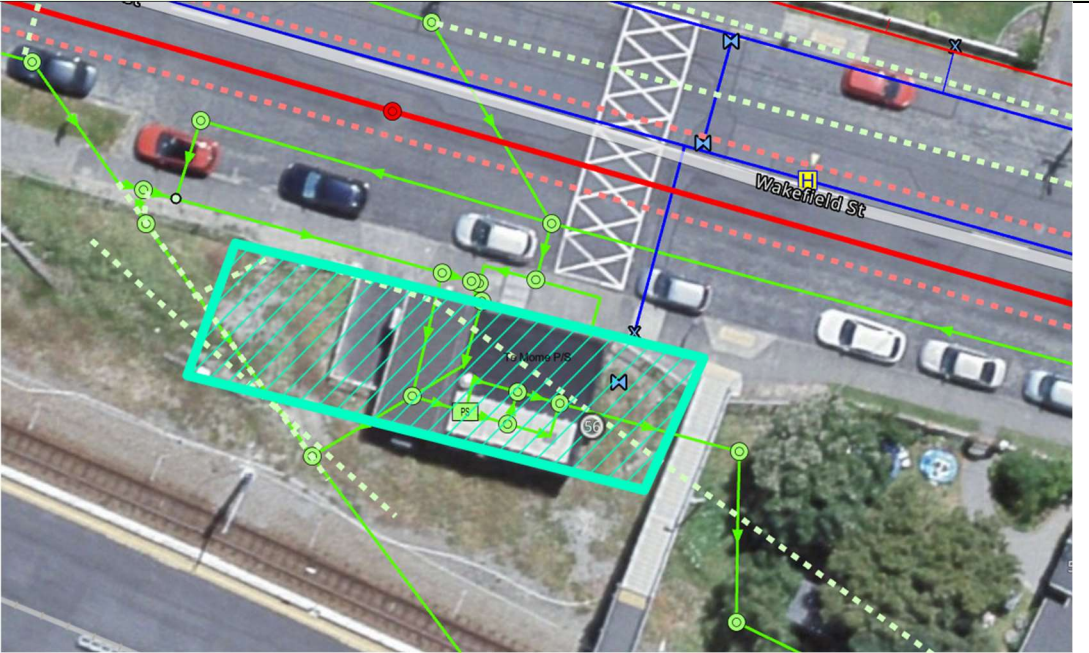

There are not considered to be any other matters which are relevant for consideration as part of this NOR.

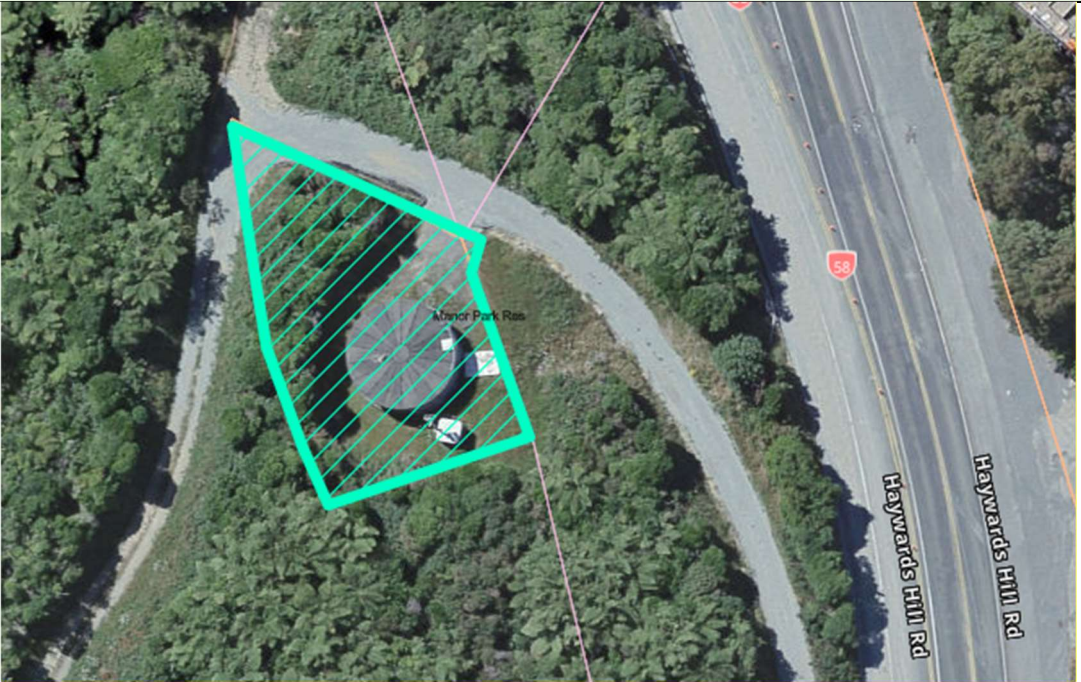

Appendix 1

Maps showing proposed designation areas

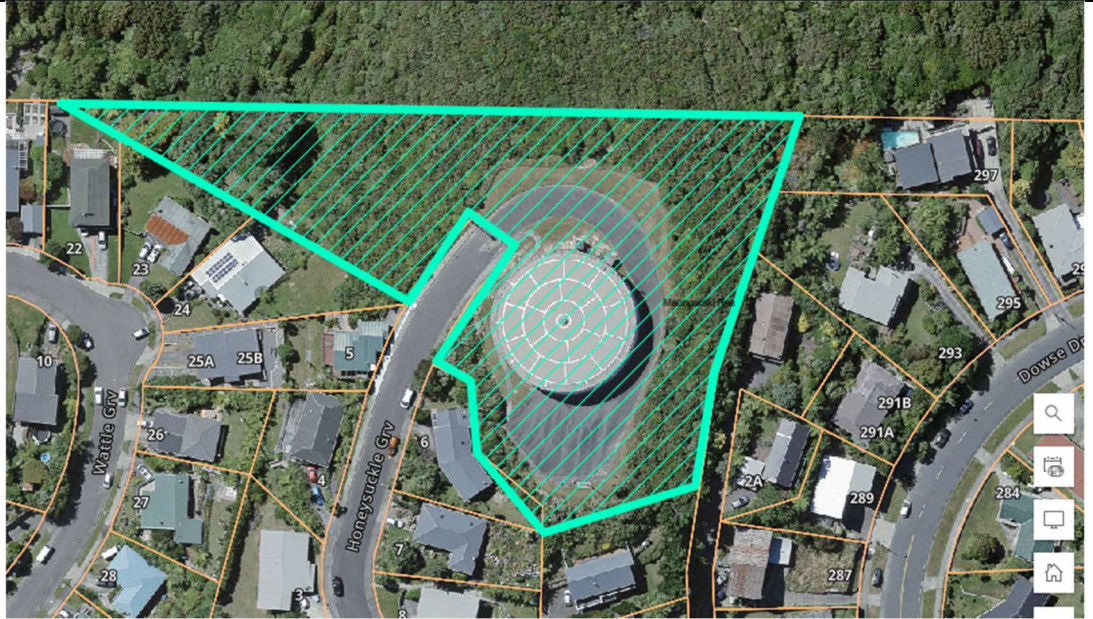
Site	Designation envelope
<p>Esplanade Central Wastewater Pumpstation</p>	
<p>Esplanade West Wastewater Pumpstation</p>	

Site	Designation envelope
<p>Wellington Road Wastewater Pumpstation</p>	 <p>Note: Designation snaps to HCC property boundary</p>
<p>Marine Parade Wastewater Pumpstation</p>	 <p>Note: Designation snaps to HCC property boundary</p>

Site	Designation envelope
<p>Te Mome Stormwater Pumpstation</p>	 <p>Note: Designated area aligns with the leased area</p>
<p>Kingsley Water Supply Reservoir</p>	 <p>Note: Designation snaps to HCC property boundary</p>

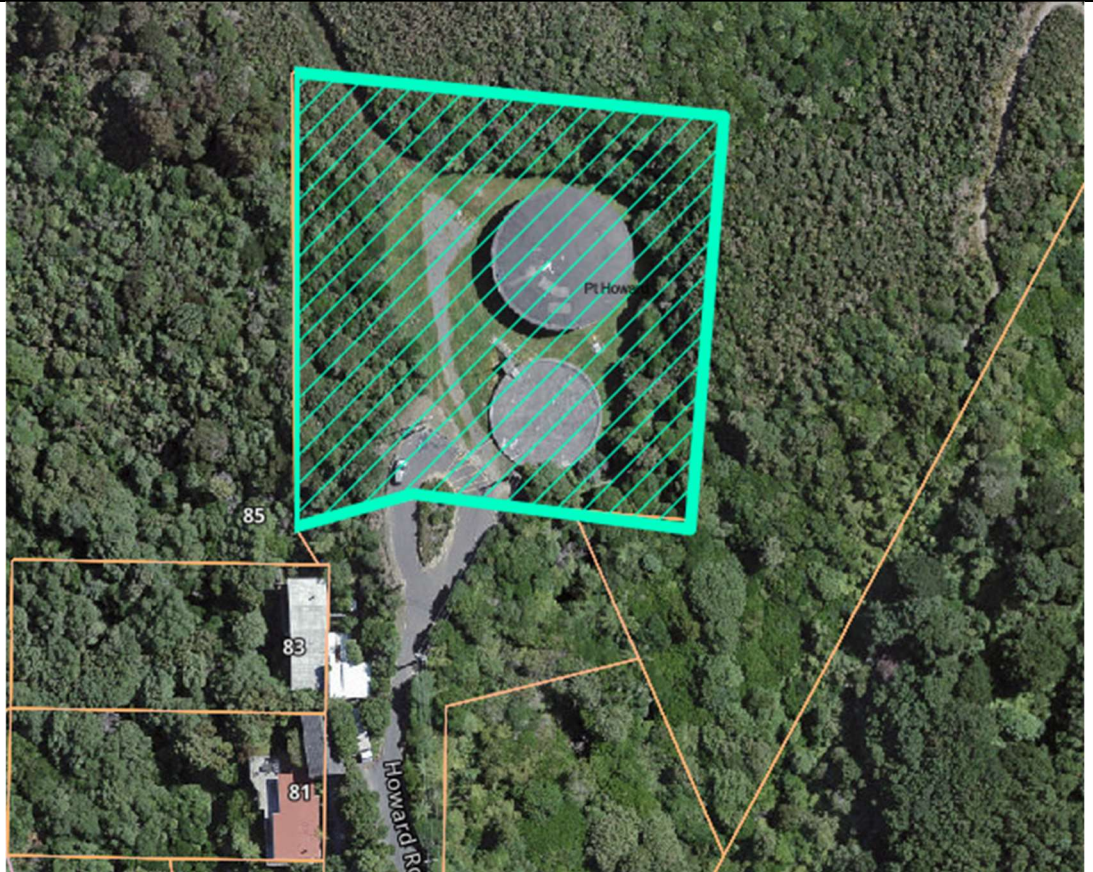
Site	Designation envelope
<p>Manor Park Water Supply Reservoir</p>	 <p>Note: Designation snaps to HCC property boundary</p>
<p>Gracefield Water Supply Reservoir</p>	

**Maungaraki
Water Supply
Reservoir**



Note: Designation snaps to HCC property boundary

**Point Howard
Water Supply
reservoirs**

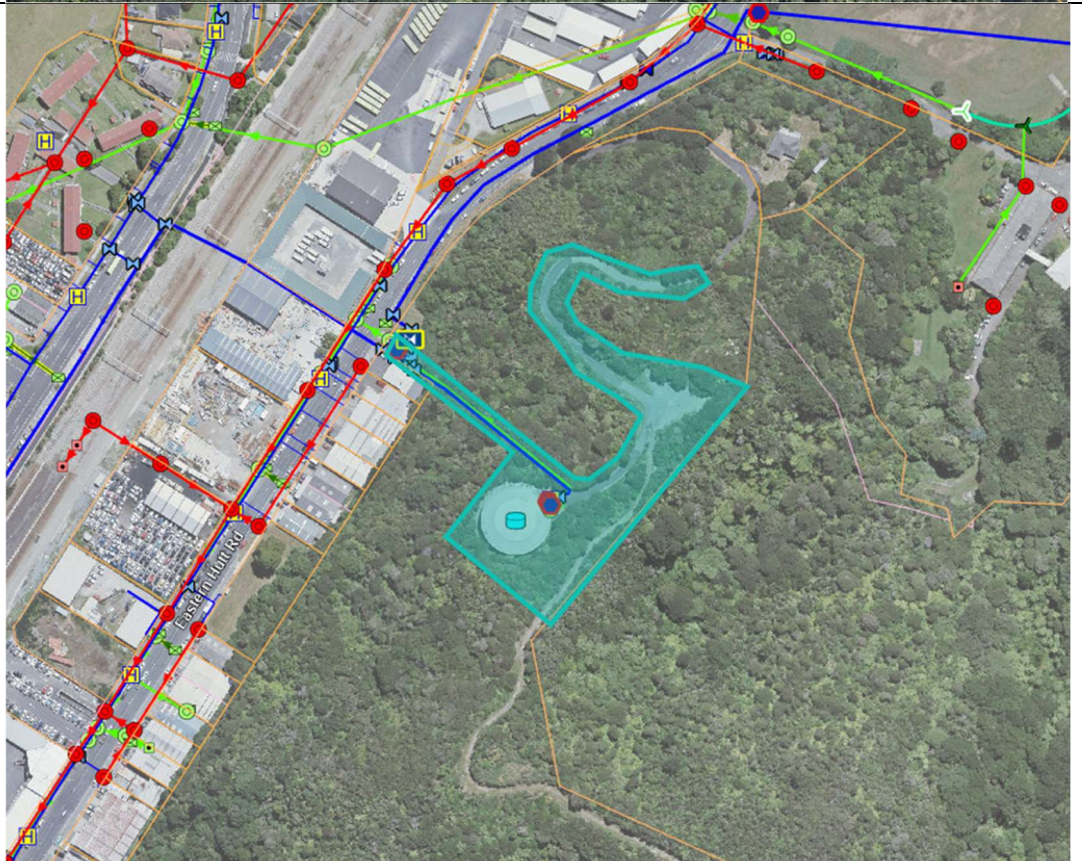


Note: Designation snaps to HCC property boundary

Rata Street
Water Supply
Reservoir

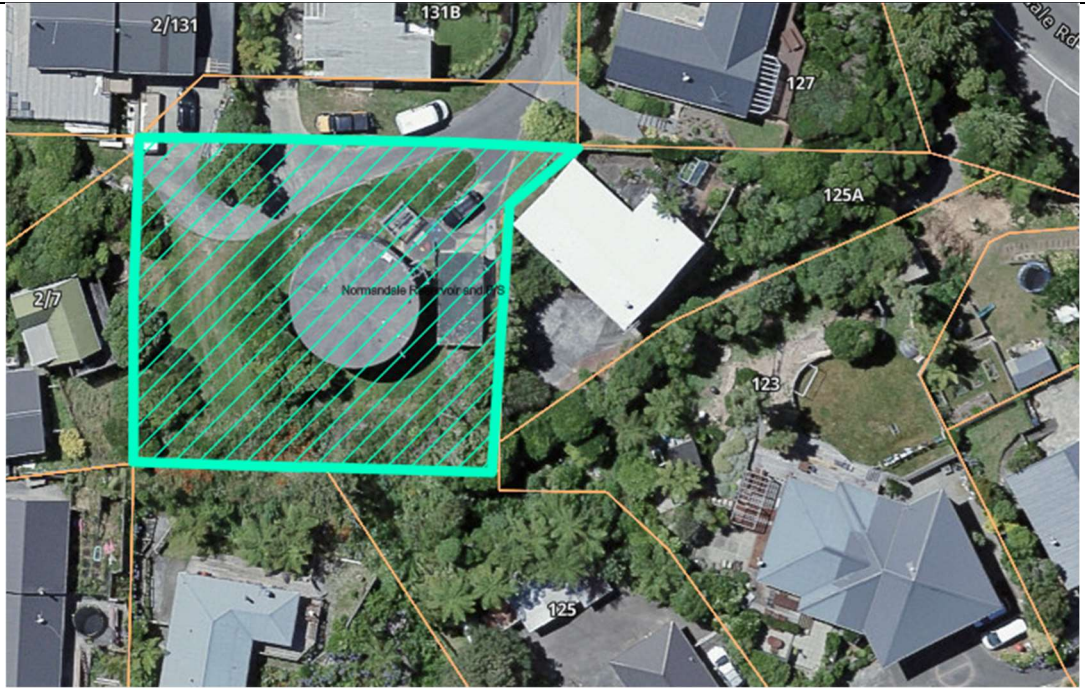


Taita Water
Supply
Reservoir



Note: Designation on access road to extend as far as the site gate

**Normandale
Water Supply
Reservoir**



Note: Designation snaps to HCC property boundary

**Gawler Grove
Water Supply
Reservoir**



Note: Designation snaps to HCC property boundary