



**Wainuiomata Cleanfill -  
Environmental Restoration  
Plan**

**Prepared for**  
Hutt City Council  
**Prepared by**  
Tonkin & Taylor Ltd  
**Date**  
February 2022  
**Job Number**  
84466.005.v1



**Exceptional thinking together**

[www.tonkintaylor.co.nz](http://www.tonkintaylor.co.nz)

## Document Control

<b>Title: Wainuiomata Cleanfill - Environmental Restoration Plan</b>					
<b>Date</b>	<b>Version</b>	<b>Description</b>	<b>Prepared by:</b>	<b>Reviewed by:</b>	<b>Authorised by:</b>
July 2021	1	Draft Environmental Restoration Plan – for discussion with CLG	A Meehan	B Rodenburg	E. Breese
October 2021	2	Draft Environmental Restoration Plan – following initial feedback	A Meehan	B Rodenburg	E. Breese
February 2022	3	Final Environmental Restoration Plan	A Meehan	B Rodenburg	E Breese

**Distribution:**

Hutt City Council

1 electronic copy

Tonkin & Taylor Ltd (FILE)

1 electronic copy

## Table of contents

<b>1</b>	<b>Purpose of the Environmental Restoration Plan</b>	<b>1</b>
<b>2</b>	<b>Objectives of the ERP</b>	<b>1</b>
<b>3</b>	<b>Management</b>	<b>1</b>
	3.1 Roles and Responsibilities	1
<b>4</b>	<b>Site Description</b>	<b>2</b>
	4.1 Location	2
	4.2 Cleanfill Assets	2
<b>5</b>	<b>Environmental Restoration Plan requirements</b>	<b>2</b>
	5.1 Resource Consents	2
	5.2 Restoration Planting – a guide for the Wellington Region	2
	5.3 Final site levels	3
	5.4 Surface treatments	3
	5.5 Maintenance of plants	5
	5.6 Environmental monitoring	6
	5.7 Landscaping measures and future establishment as a reserve	6
<b>6</b>	<b>Applicability</b>	<b>6</b>

### Appendix A :           Indicative planting plan



## 1 Purpose of the Environmental Restoration Plan

The Wainuiomata Cleanfill is a Hutt City Council (HCC) asset. Filling is mandated to cease no later than 22 June 2022, and this Environmental Restoration Plan (ERP) is to provide a clearly defined framework for the remediation and ongoing maintenance of the site.

Operation of the land in the period after the closure of the current cleanfill will be conducted in a manner which is compliant with the relevant conditions of the resource consents. This includes WGN19027 (granted by Greater Wellington Regional Council) and RM190050 (granted by HCC's regulatory team).

## 2 Objectives of the ERP

The objectives of the ERP is to:

- Maintain compliance with the requirements of applicable resource consents;
- Identify the way the site will be remediated (including the measures required to maintain plants as they establish); and
- Meet the expectations of key stakeholders.

It is anticipated that the site will need an initial period of active management while remediation works occur and plants establish, however the level of management required will diminish over time.

## 3 Management

### 3.1 Roles and Responsibilities

The site is owned by HCC, which remains responsible for site remediation and environmental maintenance of the cleanfill. This includes ongoing responsibility for compliance with all resource consents issued pursuant to the Resource Management Act 1991 and any relevant management plan(s).

**Table 3.1 – roles and responsibilities**

Role	Organisation	Person / Department	Responsibility
Owner	Hutt City Council	Solid Waste Team	Overall responsibility for aftercare and compliance with resource consents
	Hutt City Council	Parks and Reserves Team	Long-term responsibility for maintenance of the site, once managed as reserve.
Planting contractor	Hutt Valley Contracting	Joey Manihera	Planting and maintenance of the site

## 4 Site Description

### 4.1 Location

The Wainuiomata Cleanfill is located at 130 Coast Road in Wainuiomata. The site is irregularly shaped and has an approximate area of 6.5 ha. It has been utilised as a commercial cleanfill since approximately 2011 and will contain approximately 282,000 m<sup>3</sup> of material spread across three stages by the time operations cease.

### 4.2 Cleanfill Assets

During its operation, the Wainuiomata Cleanfill incorporated a number of assets which were maintained to enable efficient operation of the site. This includes:

- Site kiosk;
- Truck wash;
- Internal access road;
- Signage; and
- Plant (including water truck, light vehicles and heavy machinery).

When these assets are no longer needed, they shall be removed from the site.

## 5 Environmental Restoration Plan requirements

### 5.1 Resource Consents

The following resource consents have been obtained for the cleanfill operation at 130 Coast Road:

1. WGN19027 (granted by Greater Wellington Regional Council); and
2. RM190050 (granted by HCC).

These resource consents impose requirements relating to the preparation of an Environmental Restoration Plan (ERP) within three months of the cleanfill reaching capacity. This ERP is to have regard to *Restoration Planting – a Guide to planning restoration planting projects in the Wellington Region* and at a minimum include:

- A plan showing proposed finished site levels;
- Proposed finished surface treatments;
- Maintenance of the finished plantings; and
- Measures to grass or landscape any exposed areas and ensure the site is left in a suitable condition to enable use of the site as a reserve in future.

This plan is intended to be prepared in consultation with the Community Liaison Group (CLG) and submitted to the Manager / Team Leader of the respective councils (being GWRC and HCC) for certification. The cleanfill site shall be rehabilitated and stabilised in accordance with the approved ERP.

### 5.2 Restoration Planting – a guide for the Wellington Region

Both GWRC and HCC require that the ERP is to be prepared having regard to *Restoration Planting – a Guide to planning restoration planting projects in the Wellington Region*. This document provides guidance relating to the preparation of a planting plan, site establishment, what and how to plant, and maintenance of plants. This document outlines some of the benefits of restorative planting, and includes the following principles:

- Use of locally sourced, native plants can provide a plethora of benefits including establishing better than exotic plants, requiring less maintenance, providing habitat for many native fauna and providing an aesthetic natural backdrop.
- Preparing a simple scale map which outlines the boundaries, general terrain and existing vegetation can assist with the remedial plan. This can then easily be converted into a planting plan once a species list and broad plan has been agreed.
- Where possible, plants should be sourced locally and matched to the local ecosystem. This will provide them with the best possible chance of establishing and thriving in the long-term.
- Once the site has been planted, an ongoing allowance for maintenance should be provided for. This includes ongoing weeding and replacing specimens that fail to establish, and will allow the plants time to establish and prosper.
- The document identifies a 'Wellington Region First Fifteen' which are known to be hardy species that are resilient to variable weather conditions including frost, wind and variable solar and ground conditions. This includes:
  - Mānuka (*Leptospermum scoparium*);
  - Kānuka (*Kunzea ericoides*);
  - Ti kōuka or Cabbage Tree (*Cordyline australis*);
  - Puahou or Five-finger (*Pseudopanax arboreus*);
  - Akiraho (*Olearia paniculate*);
  - Ngaio (*Myoporum laetum*);
  - Mānatu or Lowland ribbonwood (*Plagianthus regius*);
  - Kōhūhū (*Coprosma robusta*);
  - Tarata or Lemonwood (*Pittosporum eugenioides*);
  - Makomako or Wineberry (*Aristotelia serrata*);
  - Koromiko or Hebe (*Hebe stricta* var. *stricta*);
  - Māpou or Red matipo (*Myrsine australis*);
  - Toetoe (*Cortaderia fulvida*); and
  - Tōtara (*Podocarpus totara*).

This list has informed the preferred species list, as outlined below.

An overview of the measures required within this ERP are outlined below.

### 5.3 Final site levels

The final levels will remain consistent with the design drawings provided within the resource consent application, which have been provided within **Appendix A**.

### 5.4 Surface treatments

A substantial degree of remedial planting has already been completed or commissioned across Stage 1 and 2 of the subject site (130 Coast Road). This remediation was informed through discussion with local community members at a CLG meeting in March 2020<sup>1</sup>, with the following principles agreed:

---

<sup>1</sup> See CLG agenda / minutes from March 2020, available at:  
<http://iportal.huttcity.govt.nz/Home/Search?Tab=31&query=container:%5buri:5177613%5d%20>

1. That the site should be wholly planted in native species. Consideration was initially given to providing walking track and/or picnic areas, but residents confirmed that this was not the preference.
2. No access tracks to be provided, for fear of this encouraging illegal activity (i.e. dirt bike access).
3. That the species list should include a mixture of fast-establishing species (to facilitate ground cover) and slow-growing woody species (i.e. totara). Widespread agreement that species that would facilitate the reintroduction of birds was desirable.

Images of the planting from Stages 1 and 2 are provided below:



*Figure 1: Stage 2 - Eastern Batter slope planting*



*Figure 2: Stage 2 - Northern Batter slope planting (note Stage 1 in the background)*



It is proposed to align the remediation of Stage Three with the approach adopted for Stages 1 and 2. This includes a mixture of the following species:

- **Kunzea robusta - Kanuka**
- Sophora microphylla - Kowhai
- Austrodria fulvida
- **A. toetoe**
- **Leptospermum scoparium - Manuka**
- Melicytus lanceolatus
- **Coprosma robusta**
- Phormium cookianum – mountain flax
- Pittosporum tenuifolium
- **Hebe Stricta**
- Olearia solandri -
- Hedycarya arborea – Pigeon wood
- Hoheria populnea
- H. sixtylosa
- **Myrsine australis – red matipo**
- Knightia excels
- Beilschmiedia tawa
- Dacrycarpus dacrydiodes
- **Podocarpus totara**
- *Phormium tenax* [per suggestion from Community Liaison Group]

Those species highlighted in **bold** align with the 'Wellington Region First Fifteen'. The remainder have been previously identified by HCC's planting contractor as representing a good mixture of species that are well suited to the site.

It is proposed to plant the site in a manner broadly consistent with the planting undertaken in Stages 1 and 2, per the photographs above and the plan shown in **Appendix A**.

## 5.5 Maintenance of plants

The planting contractor has tentatively scheduled maintenance for the plants until the end of 2024. This is earmarked for:

- 2021: July and December (complete).
- 2022: April and October.
- 2023: April and October.
- 2024: April and October.

This will include weed-eating and spraying of pest species (such as fennel, blackberry and gorse) as required. It will also involve the inspection and replacement of plants which are not properly establishing.

## 5.6 Environmental monitoring

Environmental monitoring during the operational life of the cleanfill, along with operational controls on the nature of material received, represent the key mechanisms by which the localised environment has been protected. This has included:

1. Regular visual inspections of the Erosion and Sediment Controls (ESCPs) onsite to confirm they are operating appropriately and that no sediment-laden stormwater is running into the Wainuiomata River.
2. A review of water quality data during the consent process for Stage 3 of the cleanfill. This confirmed that the cleanfill, even when operational, has had no demonstrable impact on water quality downstream of the site.
3. Dust monitoring has been undertaken during the operational life of the cleanfill.
4. Operational controls have been in place to control the nature of material received and ensure only appropriate cleanfill is received onsite.

As such, no further environmental monitoring will take place following the site's closure. Site remediation will commence upon confirmation that the site has reached capacity.

## 5.7 Landscaping measures and future establishment as a reserve

Following the end of the maintenance period identified in Section 5.5 above it is proposed that the site will be managed by HCC's Parks and Reserves Team as a reserve. HCC will cover costs associated with the site's maintenance and upkeep.

## 6 Applicability

This report has been prepared for the exclusive use of our client Hutt City Council, with respect to the particular brief given to us and it may not be relied upon in other contexts or for any other purpose, or by any person other than our client, without our prior written agreement.

Tonkin & Taylor Ltd

Report prepared by:

Authorised for Tonkin & Taylor Ltd by:

.....

.....

Alastair Meehan

Ed Breese

Environmental Planner

Project Director

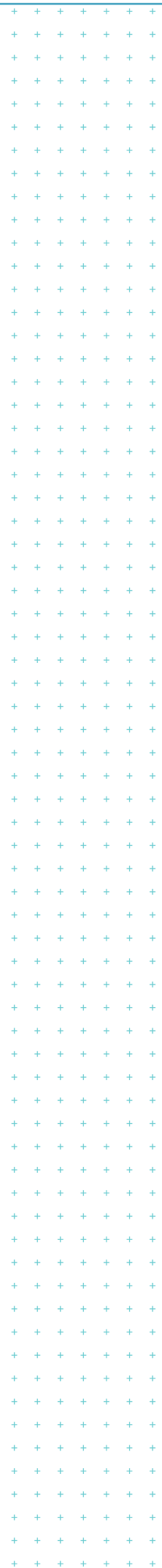
ALME

\\ttgroup.local\corporate\wellington\tt projects\84466\84466.0050\workingmaterial\long-term planning\wainuiomata cleanfill - environmental restoration plan (updated).docx

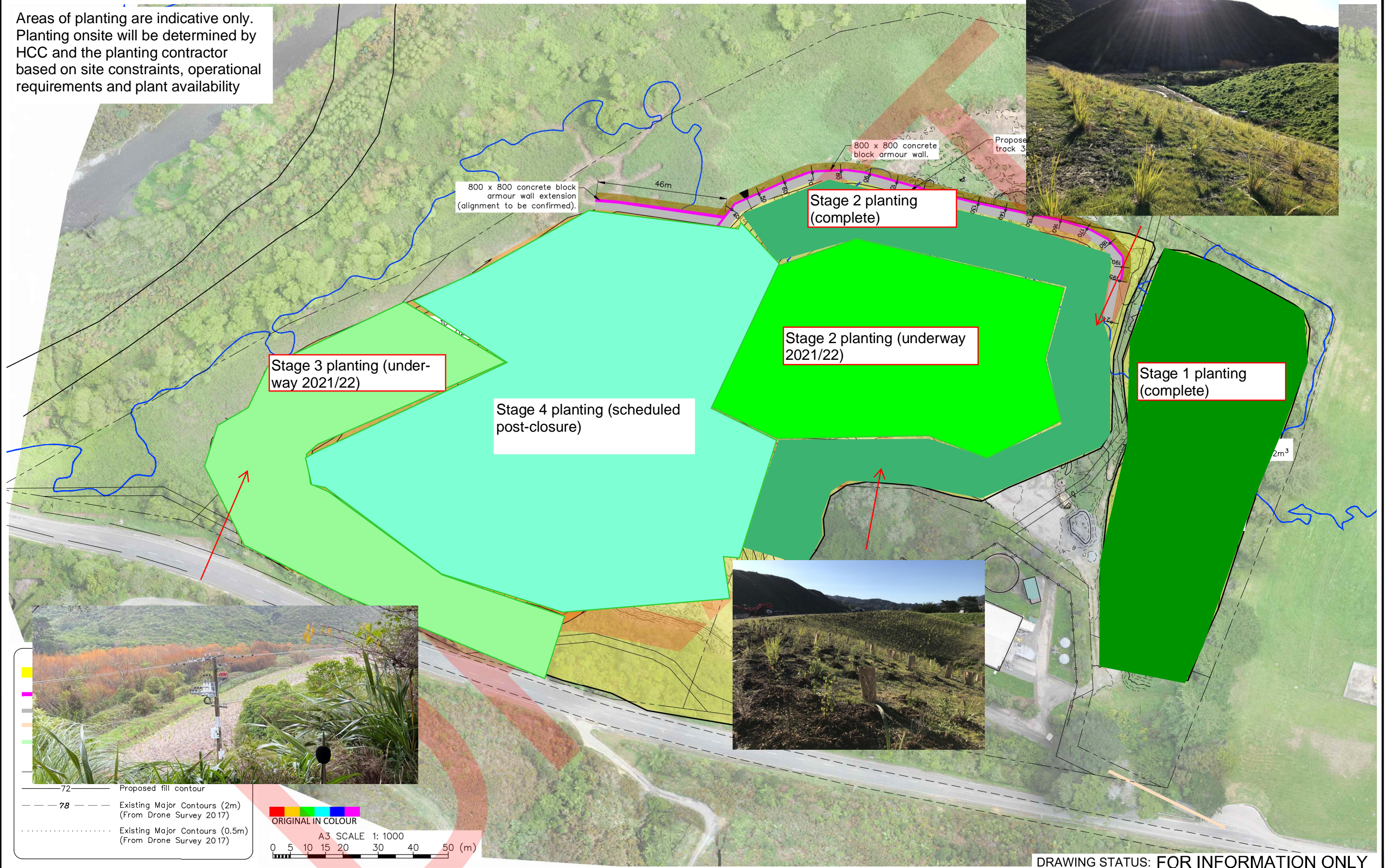
## **Appendix A: Indicative planting plan**

---





Areas of planting are indicative only. Planting onsite will be determined by HCC and the planting contractor based on site constraints, operational requirements and plant availability



DRAWING STATUS: FOR INFORMATION ONLY

DESIGNED :	BLR	May, 18
DRAWN :	BLR	May, 18
DESIGN CHECKED :		
DRAFTING CHECKED :		
CADFILE :	\\84466.002-01,03.dwg	
APPROVED :		
<b>NOT FOR CONSTRUCTION</b>		
This drawing is not to be used for construction purposes unless signed as approved		
1 FOR INFORMATION ONLY	BLR	May, 18
REVISION DESCRIPTION	BY	DATE

NOTES :

- Aerial photo supplied by Cuttriss Consultants (Date of Photography :Oct 2017)
- Topographic survey supplied by Cuttriss Consultants, dated October 2017. Reference data: "29513 Wainui Cleanfill Contours.dwg".
- Coordinate Datum: NZGD2000, Wellington Circuit Coordinates. Origin: 41 18 04S 174 46 35E 800,000mN 400,000mE Level Datum: LINZ (MSL) Wellington Vertical Datum 1953
- Flood modelling provided by GWRC December 2017
- Refer to DWG 84466.002-02 for details of flood modelling, DWGs 84466.002-03 to 07 for details of proposed flood inundation armour wall and DWG 84466.002-08 for culvert details

REFERENCE :

**Tonkin+Taylor**

Level 4, 2 Hunter St, Wellington  
 Tel. (04) 381 8560 Fax. (09) 307 0265  
 www.tonkintaylor.co.nz

CLIENT, PROJECT		HUTT CITY COUNCIL	
		WAINUIOMATA CLEAN FILL SITE	
TITLE			
SITE PLAN - STAGE 3 CLEANFILL EXTENSION			
SCALES (AT A3 SIZE)	DWG. No.	REV.	
1: 1250	84466.002-20	1	