



**Cr Quentin Duthie**

**Regional Councillor  
update**

***Community Boards***

***February 2025***

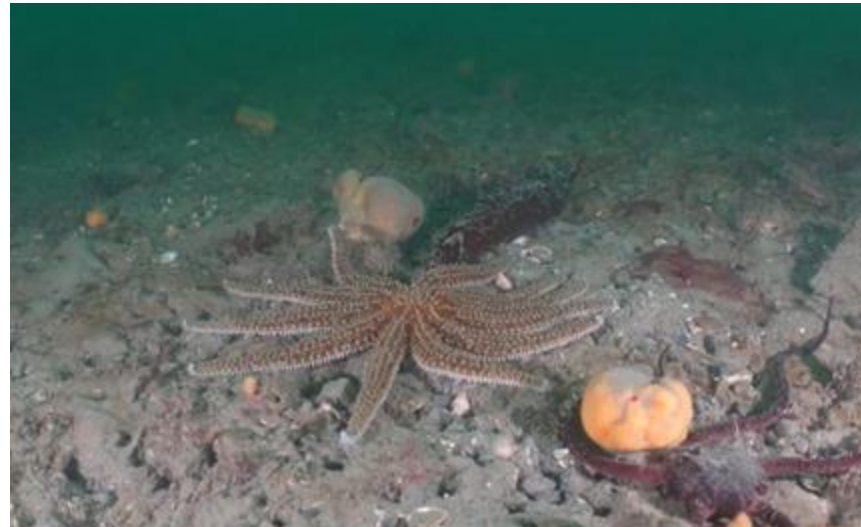
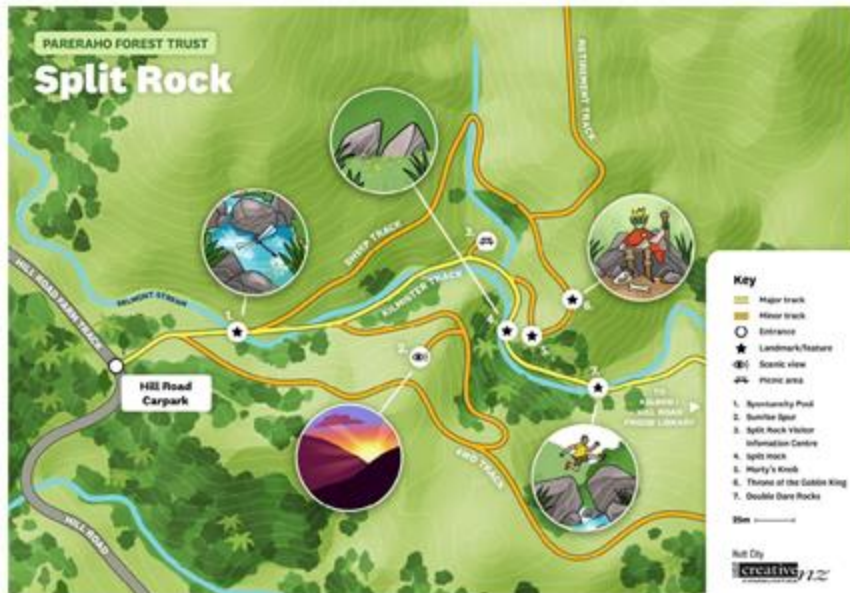
# Metlink Public Transport

- Buses reliable, patronage high and growing
- Train - high bus replacement due to summer maintenance
- Regional Public Transport Plan consultation in March (with Annual Plan)
- HCC Sustainable Growth Strategy promotes PT improvements
- Transport Committee meets this Thursday
- Council meeting 27 February: annual fares review and draft RPTP



# Environment and Bulk Water Supply

- Te Wai Takamori o Te Awa Kairangi (Riverlink)
- Local Water Done Well consultation coming
- RMA reform
- Regional Parks
- Reminder: GW Environmental Hotline 0800 496 734






# Regional Leadership and Representation

- Annual Plan will be largely business as usual with lower rates increase
- Representation Review appealed, awaiting decision
- Elections this year
- Remainder Greater Wellington website (e.g. Pests and weeds)
- Please get in touch with me with any questions and ideas





**Thank you**  
**Cr Quentin Duthie**  
**021337262**