

# Rautaki Whakatipu

# Sustainable Growth Strategy 2025–2055

---

Eastbourne Community Board – 11 February 2025

## Overview of the Growth Strategy

- Growth planning involves looking at all the aspects of our city from housing and transport to water infrastructure, businesses, and community spaces. It also considers our natural environment, climate challenges, and cultural identity.
- Our **draft Sustainable Growth Strategy** is a long-term (30-year) document that is used to improve coordination between council's plans and strategies, regional frameworks and national direction.
- It brings together existing plans for transport, infrastructure, and open spaces, and aligns with the Long-Term Plan 2024-2034.
- We've had input from our Mana Whenua partners, central government agencies, Greater Wellington Regional Council and Metlink.
- The document itself is divided into four chapters.



## Chapter 1

# He whakatakinga Introduction

Introduces the purpose and strategic context of the Strategy.



### National Policy Statement on Urban Development (NPS-UD)

Aims to make sure that New Zealand's towns and cities are well-functioning urban environments that meet the changing needs of our diverse communities.



### Regional Future Development Strategy

A statutory document required under the NPS-UD, which sets out a long-term plan to ensure a 'well functioning' urban environment, showing where growth will be, in what form, and what infrastructure is needed to support that growth.



### Sustainable Growth Strategy 2025-2055

Guides how we want our city to change over the next 30 years.

Intends to inform decision-making and investment decisions by Council, government and private sector.



### Other Plans and Strategies

Various local and regional plans and strategies inform the Growth Strategy.

### Lower Hutt Long Term Plan 2024-2034

Hutt City Council's priorities and projects for the next 10 years inform the Growth Strategy.

# Tō tātou tāone i nāianeī rangi

## Te Awa Kairangi ki Tai Lower Hutt Today

This chapter provides an overview of Lower Hutt and presents the challenges and opportunities our city faces as we grow and change over the next 30 years.



The key themes are:

- 1. Ngā hanganga**  
Housing
- 2. Ngā waka**  
Transport
- 3. Ngā puna wai**  
Water Infrastructure
- 4. Pākihi me te ōhanga**  
Business and Economy
- 5. Tuakiritanga**  
Cultural Identity
- 6. Huringa āhuarangi me ngā mōrearea**  
Changing Climate and Natural Hazards
- 7. Taiao me ngā whenua tāpui**  
Open Space, Recreation and Environment
- 8. Pokapū hapori**  
Community Facilities



# Te anamata o tō tātou tāone

## Te Awa Kairangi ki Tai Lower Hutt in 30 Years

This chapter sets out our direction for Te Awa Kairangi ki Tai Lower Hutt in 30 years, the outcomes we want to see delivered and the strategic moves we need to get there. It spells out our “sustainable growth strategy” for the city.



### Long Term Plan

#### Purpose

**A connected, resilient and inclusive city where everyone thrives**

#### Principles

**Livable city and vibrant neighbourhoods**

**Supporting and enhancing the environment**

**Being a future-fit city**

**Cultural recognition**

#### Outcomes

- Urban growth in suitable areas
- Thriving local centres
- Affordable housing
- Transport options

- Compact urban footprint
- Mana Whenua as kaitiaki
- Healthy natural systems
- Resilient environment

- Zero-carbon city
- Targeted infrastructure upgrades
- Diverse business environment

- Mana Whenua history and identity
- Distinct neighbourhoods

### Sustainable Growth Strategy

#### Strategic Moves



**Enhance the heart of the city**



**Build up the central and northern Valley Floor**



**Grow with Te Awa Kairangi Hutt River**



**Foster prepared coastal and low-lying communities**



**Cultivate well-connected economic precincts**



**Support neighbourhoods outside the Valley Floor**



**Strengthen transport options**



**Create a greener and healthier city**

#### Actions



9



11



3



15



5



6



9



19

## Te ara whakamua Strategic Moves

The next section explains each strategic move, their rationale, what types of actions are recommended to give effect to them, and what their expected benefits are.



1

### Enhance the heart of the city

Revitalise the central city to create a thriving neighbourhood and destination.



2

### Build up the central and northern Valley Floor

Concentrate new housing in the central and northern Valley Floor.



3

### Grow with Te Awa Kairangi Hutt River

Enhance resilience, recreation and biodiversity along the river.



4

### Foster prepared coastal and low-lying communities

Recognise the risks of climate change and building community preparedness.



5

### Cultivate well-connected economic precincts

Improve resilience of and access to employment areas.



6

### Support neighbourhoods outside the Valley Floor

Sustain the access, character and services of neighbourhoods.



7

### Strengthen transport options

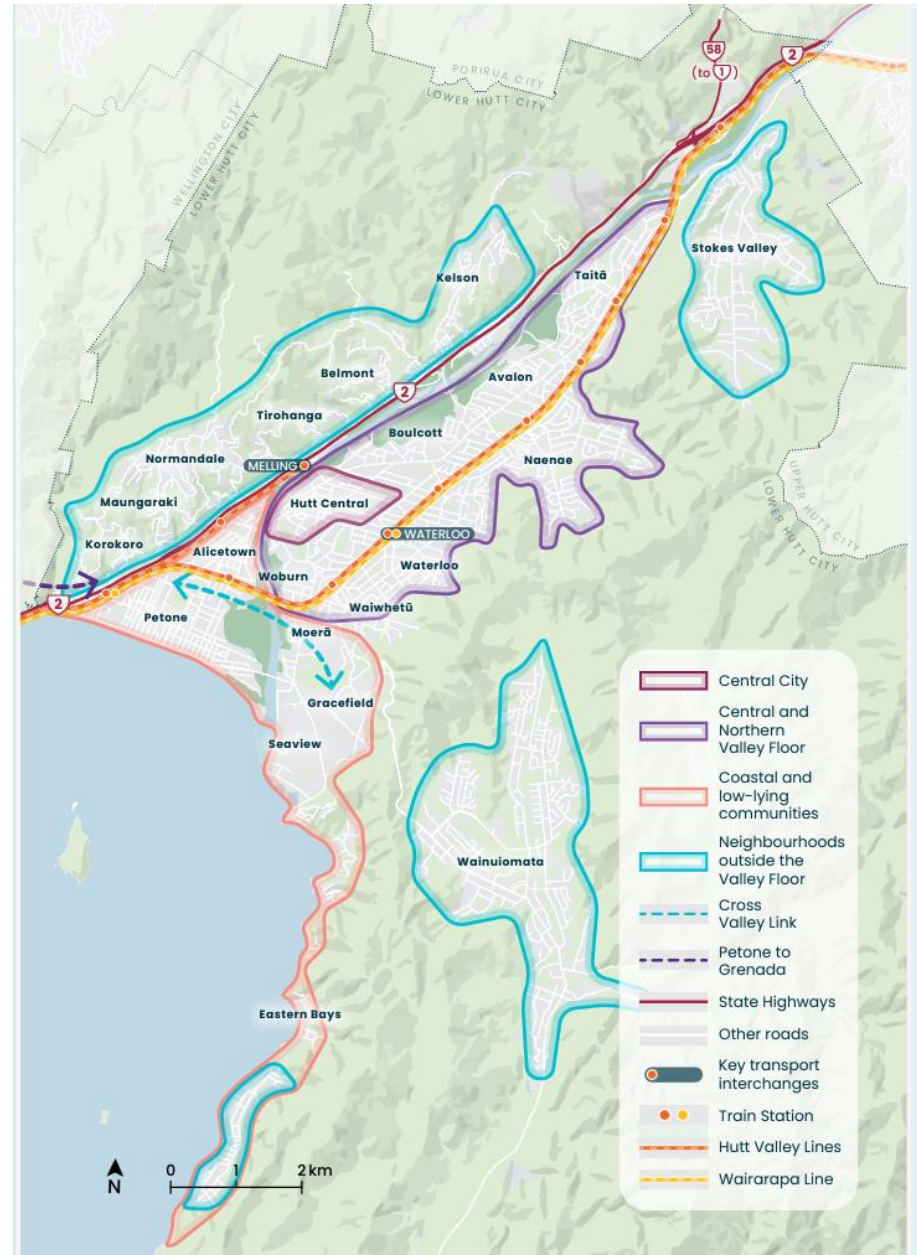
Provide a variety of transport options that make it easy to get to and around the city.



8

### Create a greener and healthier city

Improve the health and wellbeing of the city and its ecosystems.



# Ngā tukanga Action Plan

This chapter presents a list of actions to give effect to our strategic moves.



## Whāngaihia te hunga noho takutai Foster prepared coastal and low-lying communities

Action	Action Description	Status	Lead Agency/team	
			Council	Other Agency
<b>1. Support the development of the Regional Adaptation Plan</b>	Work is underway to develop a regional approach to adaptation. This will identify which problems need to be solved at a regional level e.g. lifelines, emergency management and pre-event plans; the management of large rivers and catchments; funding adaptation actions, and clarifying roles and responsibilities.	<b>Funded by another agency</b>		<b>WRLC</b>
<b>2. Develop a Climate Adaptation Plan for Lower Hutt</b>	Our coastal, low-lying and other areas are vulnerable to climate change. We need to prepare a strategy to respond to climate risk in these areas over time. We will work with communities, businesses and Mana Whenua to make decisions about the future of these areas, building on the work underway at the regional and national level.	<b>New initiative (unfunded)</b>	<b>HCC</b>	



## Te whakapakari i ngā ara waka Strengthen transport options

**5. Work with Metlink to develop Waterloo as a strategic transport interchange**

The Waterloo train station is planned to be upgraded, including better interchange with bus services. This is a key transport node due to its location, close to the main economic area of Lower Hutt and many transport connections linking Waterloo to Wellington City, Wairarapa, Upper Hutt, Wainuiomata, Eastbourne and the rest of the Valley Floor.

**Funded by another agency**

**Metlink**



# Next steps

---



## **5 February to 4 April 2025**

Community engagement <https://haveyoursay.huttcity.govt.nz/sustainable-growth-strategy-2025-2055>

## **April 2025 – Councillors briefing**

Summary of feedback received, and changes recommended

## **May 2025 – District Plan Review Committee / Council**

Adoption of the final Strategy



# Questions?

---