

Waste Minimisation

Brief introduction on Waste Minimisation at Hutt City Council



New Zealand's Waste Challenge

Aotearoa NZ is one of the highest generators of waste per person in the world

Aotearoa NZ generates 17.49 million tonnes of waste per year 12.59 million tonnes of this is sent to landfills.



Silverstream Landfill



Imagery ©2023 Airbus, CNES / Airbus, Maxar Technologies, Planet.com, Terralink International Ltd, Map data ©2023 Google 200 m



The WMMP

Why do we need one?



WELLINGTON REGION WASTE MANAGEMENT & MINIMISATION PLAN 2023-2029

PREPARED FOR
THE COUNCILS OF
THE WELLINGTON
REGION

What is HCC doing to minimise waste entering the Landfill?

Incentivising recycling at the transfer station via a discount voucher



Resource recovery at Silverstream Landfill

Divert resources from landfill to a transfer station

- Oil
- Paints
- Batteries
- Green waste
- Whiteware
- Lawnmowers
- Bikes
- Furniture
- Electrical equipment and much more!

We are also investigating a means of being able to separate construction demolition waste, specifically timber.



What happens to the recovered resources?

Earthlink:

Anything they can't fix, they upcycle.

You can purchase recovered items at the Earthlink shop in Taita.



**Earthlink
Incorporated**

Te Kaporeihana Mahi
Papatūānuku

Organic Waste

Garden/green waste



Food waste



Why do we need to divert organics from landfill?



- To reduce methane emissions
- Create nutrient-rich soil/biogas
- Optimise landfill space
- Minimise leachate in landfill



What is HCC council doing to minimise the impact of organic waste?

- Proposal to extend our kerbside service to include FOGO waste (LTP consultation currently under way)
- Investigating options for a facility to process organic waste for the Wellington Region.



Litter and illegal dumping in Hutt City



Litter and illegal dumping in Hutt City continued



Sustainable Coastlines data



LITTER DENSITY
Items Per 1000m²

Low 23
High 7,621
Average 594

SURVEY AREAS

3

SURVEYS COMPLETED

46



VOLUNTEER HOURS

560



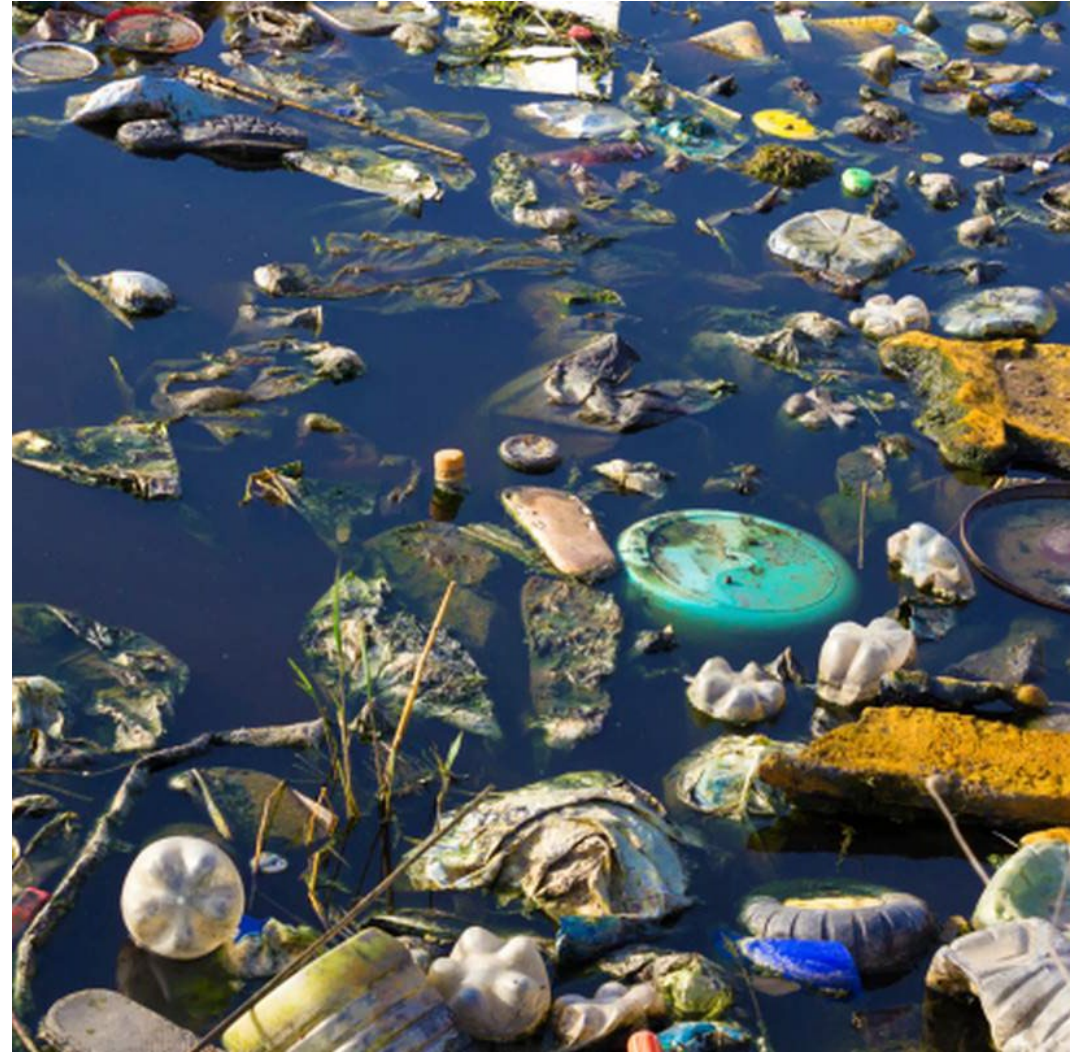
Top 10 Litter items found in Hutt City monitoring sites

LITTER TYPE - ITEMS					
				ITEMS	WEIGHT
#	PRODUCT	MATERIAL	TOTAL ITEMS	% OF TOTAL	
1	Unidentifiable hard plastic fragments	Plastic	4,707	17.43 %	
2	Bottle caps & lids	Plastic	3,727	13.80 %	
3	Unidentifiable soft plastic fragments	Plastic	3,116	11.54 %	
4	Food wrappers	Plastic	2,984	11.05 %	
5	Glass or ceramic fragments	Glass & Ceramic	1,192	4.41 %	
6	Straws	Plastic	1,031	3.82 %	
7	Polystyrene insulation or packaging	Foamed Plastic	1,007	3.73 %	
8	Construction material	Glass & Ceramic	844	3.13 %	
9	Food containers	Plastic	826	3.06 %	
10	Lollipop sticks	Plastic	685	2.54 %	

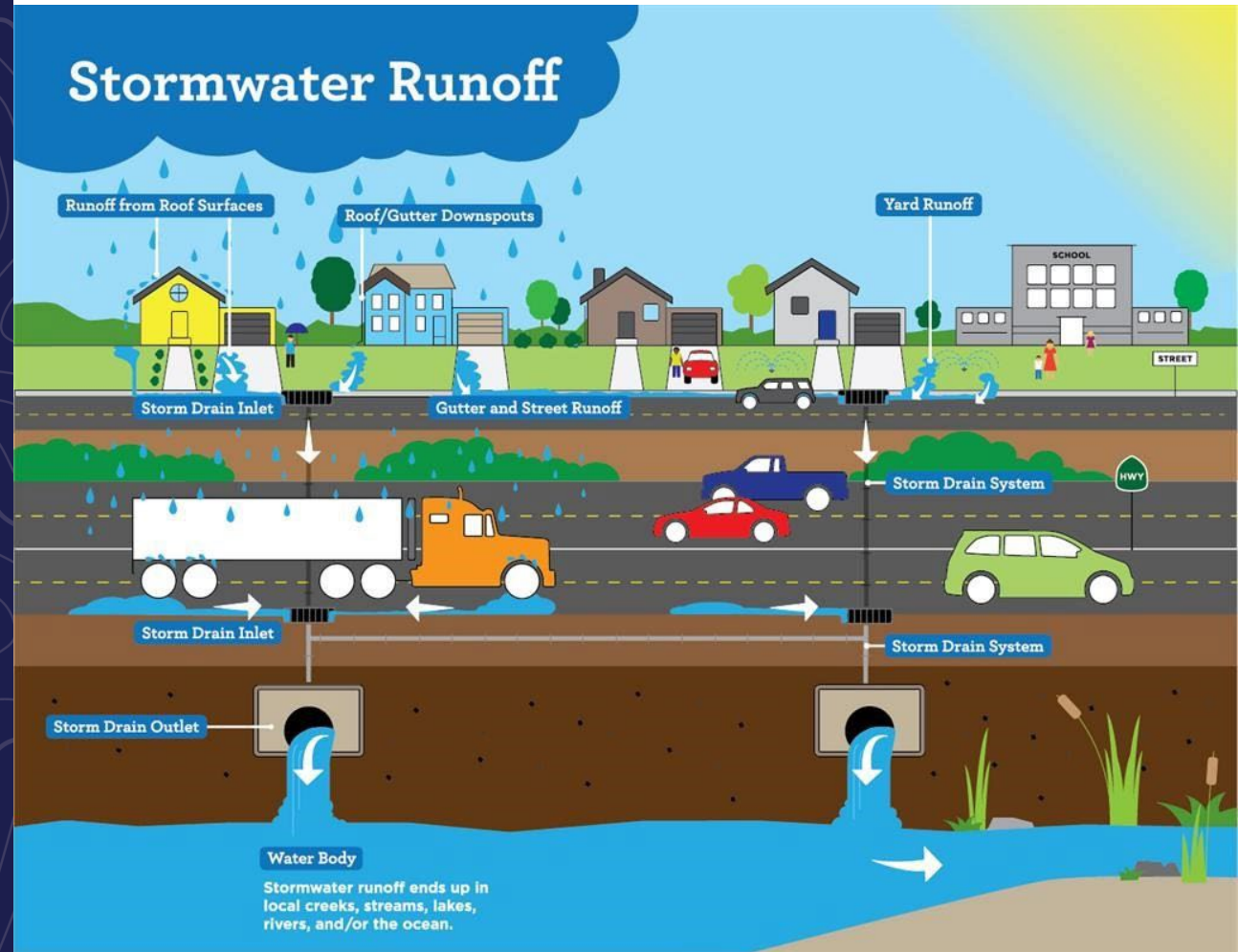
1 - 10 of 97 < >

Litter in our waterways

- Based on 2019 report:
21,900 kilograms or 10,950,000 individual pieces of litter likely to get into Lower Hutt's drains every year!
- 40% of this litter was cigarette butts
- 25% was food packaging or wrapping

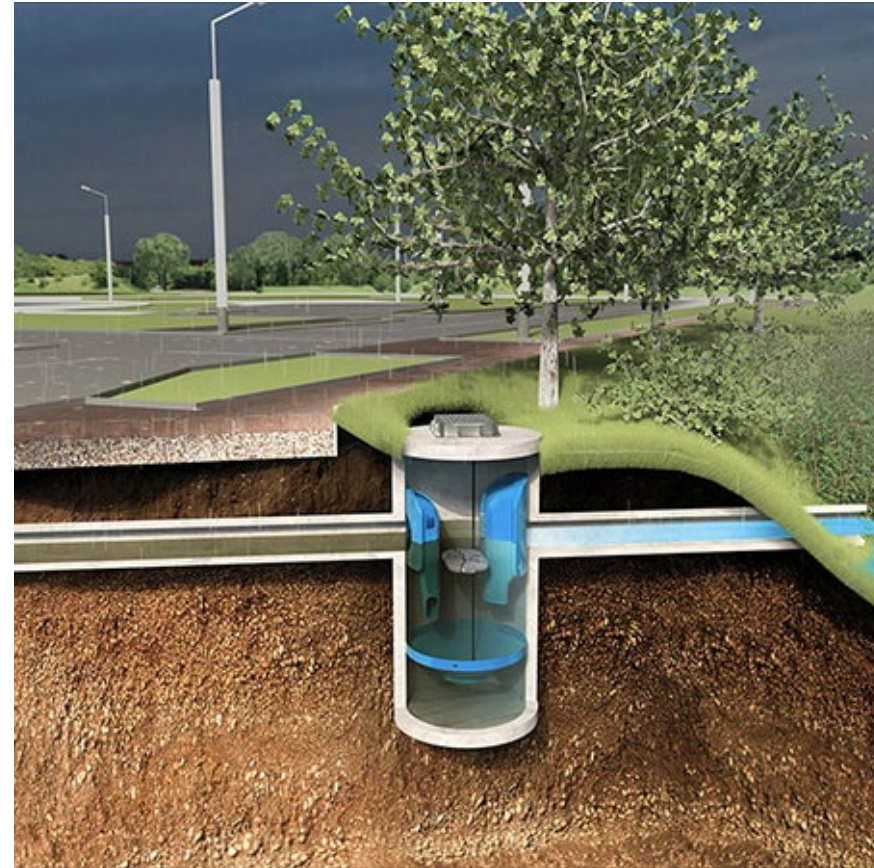


Stormwater Project



What is HCC doing?

Looking to trial a proprietary device to capture litter and other pollutants from entering our waterways.



Event waste minimisation

HCC drives waste reduction at events through the Solid Waste Management and Minimisation bylaw 2021.



Recycling contamination

- Contamination of recycling incurs costs for the community.
- Severe contamination may lead to an entire truck load being sent to landfill.





**What are we doing to
prevent recycling
contamination?**

Behaviour Change Campaign

HUTT CITY

“There’s a myth out there that all plastics go in the recycling bin.”

That’s rubbish

Olivia
Lower Hutt Local

Not all plastic goes in your recycling bin. Only put ♻️ and ♻️ in. Rinse it, sort it, bin it right.
Find out more at toogoodtowaste.co.nz

TOO GOOD TO WASTE
Māhuruaka Kōi Mōhuruaka

HUTT CITY

“Some people think someone else will take care of their dirty cans”

That’s rubbish

Meagan and Leo
Lower Hutt Locals

Cans can be recycled, but only if you rinse them first. Rinse it, sort it, bin it right.
Find out more at toogoodtowaste.co.nz

TOO GOOD TO WASTE
Māhuruaka Kōi Mōhuruaka

HUTT CITY

“There’s a myth out there that you can leave food scraps in your recycling.”

That’s rubbish

Julie
Lower Hutt Local

Get rid of any leftovers before you recycle. Empty it, sort it, bin it right.
Find out more at toogoodtowaste.co.nz

TOO GOOD TO WASTE
Māhuruaka Kōi Mōhuruaka

HUTT CITY

“Some people think dirty nappies go in the yellow bin.”

That’s rubbish

Michael
Lower Hutt Local

It’s up to you to bin it right. Only recycling goes in the yellow bin.
Find out more at toogoodtowaste.co.nz

TOO GOOD TO WASTE
Māhuruaka Kōi Mōhuruaka

HUTT CITY

“Some people think anything can be recycled in the Hutt.”

That’s rubbish

Mathew
Lower Hutt Local

Lightbulbs in your recycling could mean the whole load ends up in landfill. Check what’s going in your yellow bin. Sort it, bin it right.
Find out more at toogoodtowaste.co.nz

TOO GOOD TO WASTE
Māhuruaka Kōi Mōhuruaka



Bin Stickers/Removal Scheme

You're a Recycling Champion!



Thanks for doing your bit to reduce waste in Lower Hutt

Everything in your bin was recyclable, well done!









TOO GOOD TO WASTE
Maimoatia Kei Mōumou

If you have any questions, or for more information on what to put in each bin, visit toogoodtowaste.nz

HUTT CITY
TE AWA KAIRANGI

There were some items in your wheelie bin that are not accepted for recycling.

The following items were found in your bin:

			
Plastic bags, cling film, or soft plastics.	Glass. Pop this in your glass recycling crate.	Nappies, sanitary products or pet waste.	Hazardous items: batteries, gas bottles, medical, etc.
			
Coffee or takeaway cups.	Food scraps, green waste.	Polystyrene.	Drink cartons.

!

Your bin may not be emptied if unacceptable items are found again.

TOO GOOD TO WASTE
Maimoatia Kei Mōumou

If you have any questions, or for more information on what to put in each bin, visit toogoodtowaste.nz

HUTT CITY
TE AWA KAIRANGI

Your wheelie bin was not collected because it contains items that are not accepted for recycling.

The following items were found in your bin:

			
Plastic bags, cling film, or soft plastics.	Glass. Pop this in your glass recycling crate.	Nappies, sanitary products or pet waste.	Hazardous items: batteries, gas bottles, medical, etc.
			
Coffee or takeaway cups.	Food scraps, green waste.	Polystyrene.	Drink cartons.

Please remove the contamination and this sticker before your next collection.

!

Repeated contamination may result in the removal of your recycling bin.

TOO GOOD TO WASTE
Maimoatia Kei Mōumou

If you have any questions, or for more information on what to put in each bin, visit toogoodtowaste.nz

This sticker is NOT recyclable.

HUTT CITY
TE AWA KAIRANGI

Your wheelie bin was not collected because it contains items that are not accepted for recycling.

The following items were found in your bin:

			
Plastic bags, cling film, or soft plastics.	Glass. Pop this in your glass recycling crate.	Nappies, sanitary products or pet waste.	Hazardous items: batteries, gas bottles, medical, etc.
			
Coffee or takeaway cups.	Food scraps, green waste.	Polystyrene.	Drink cartons.

Please remove the contamination and this sticker before your next collection.

!

Any further contamination will result in the removal of your recycling bin.

TOO GOOD TO WASTE
Maimoatia Kei Mōumou

If you have any questions, or for more information on what to put in each bin, visit toogoodtowaste.nz

This sticker is NOT recyclable.

HUTT CITY
TE AWA KAIRANGI

Questions?

**Kia Ora
Thank you!**

We all have
a part to
play!

IT'S JUST ONE
STRAW...

- said *8 billion* people



At Home:

- Make conscious decisions when buying products. Can they be recycled or reused?
- Instead of single-use plastic wrap think about beeswax wrap
- Buy from bulk bin suppliers
- Take your soft plastics to a local drop-off
- Op shops!
- Visit <https://www.toogoodtowaste.co.nz/>



What can we do at school?

- Do a **carbon footprint** for your school?
- Does your school have **student commute** plan? How can as many students as possible travel to school by active or public transport?
- Is there any **gas** heating, cooking or hot water at your school?
- Energy efficiency, can buildings be improved so they need less energy? Insulation/double glazing, maintenance.
- School owned **vehicles**? Do you have vans, can they become electric?



What can we do at home?

- Take active or public **transport**
- Ask your parents about energy use in your house, **gas vs electricity.**
- Think about **energy efficiently** (thermal curtains, ventilating homes)
- **Holiday local**, try to limit the amount of flights you have to take.
- **Buy local and buy to last** where possible. This reduces the emissions from importing products

