

# **Seaview Energy Resilience Project**

## **Eastbourne Community Board Meeting**



# Project Background

- Fuel received via Seaview Wharf supplies fuel throughout lower North Island.
- The Seaview Energy Resilience Project will replace the existing fuel pipeline and upgrade the Seaview Wharf.
- This will enable these critical assets to be resilient to an earthquake and continue to provide this critical lifeline service.
- It also future-proofs this asset to changes in fuel types.

The project is being undertaken in three (3) stages:

- Stage 1 – pipeline replacement, Point Howard to Port Rd (completed)
  - Stage 2 – Seaview Wharf upgrade and pipeline replacement (underway)
  - Stage 3 – onshore pipeline replacement (due to commence)
- 
- Z Energy is leading the pipeline replacement (for pipeline owners).
  - CentrePort are leading the wharf upgrade.

# Stage 3 – new pipeline in Port Road



523340-0000-DRG-CC-0027

523340-0000-DRG-CC-0028

523340-0000-DRG-CC-0029

523340-0000-DRG-CC-0030

523340-0000-DRG-MM-1002

NZOGL HUTT CITY TERMINAL

523340-0000-DRG-MM-1003

523340-0000-DRG-CC-0032

523340-0000-DRG-CC-0031

523340-0000-DRG-CC-0021

MOBIL SEAVIEW TERMINAL

NZOGL SEAVIEW TERMINAL (BP)

523340-0000-DRG-CC-0022

523340-0000-DRG-CC-0023

523340-0000-DRG-CC-0024

523340-0000-DRG-CC-0025

523340-0000-DRG-CC-0026

523340-0000-DRG-MM-1001

523340-0000-DRG-CV-2001

523340-0000-DRG-CC-0020

PORT RD

PORT RD

PORT RD

MARLBOROUGH ST

MARKERS DR



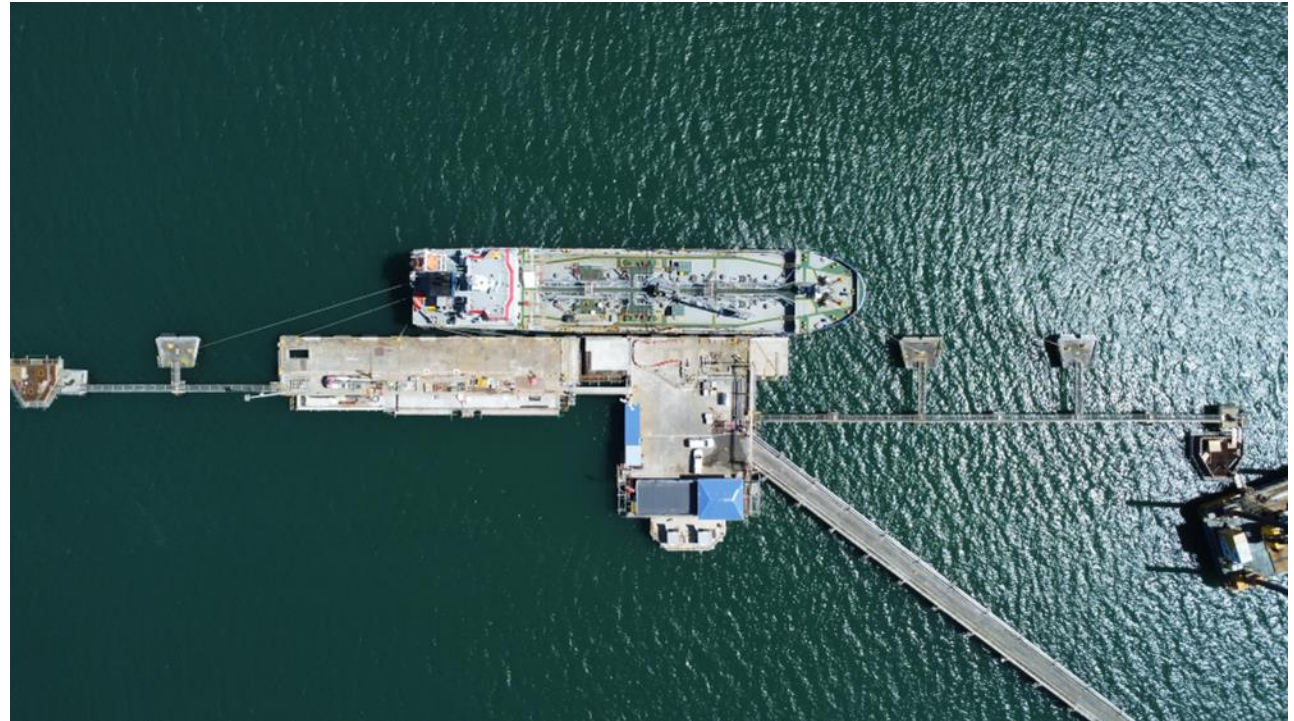
## Stage 3

- New pipeline from “Mobil tee” valve station to Hutt City Terminal
- Predominantly buried in Port Road, Marchbanks and Toop Streets
- Currently out to tender
- Works commence May ‘25
- 12-month duration
- Traffic management and car parking impacts
- Likely a progressive installation from one end to the other
- Will work with local businesses along pipeline route to minimize impact

# Stage 2 – Seaview Wharf Upgrade

# Stage 2 Update

- Milestones achieved
  - ✓ Piling works complete
  - ✓ All berthing structures in place
- Current package completion expected mid 2025
- Point Howard Wharf demolition (for HCC) completion expected early 2025
- Point Howard reinstatement design (interface with Tupua Horo Nuku) 2025
- Further site visits for community available
- Check updates at [www.seaviewproject.co.nz](http://www.seaviewproject.co.nz)



**Thank you**