

# Tupua Horo Nuku Eastern Bays Shared Path

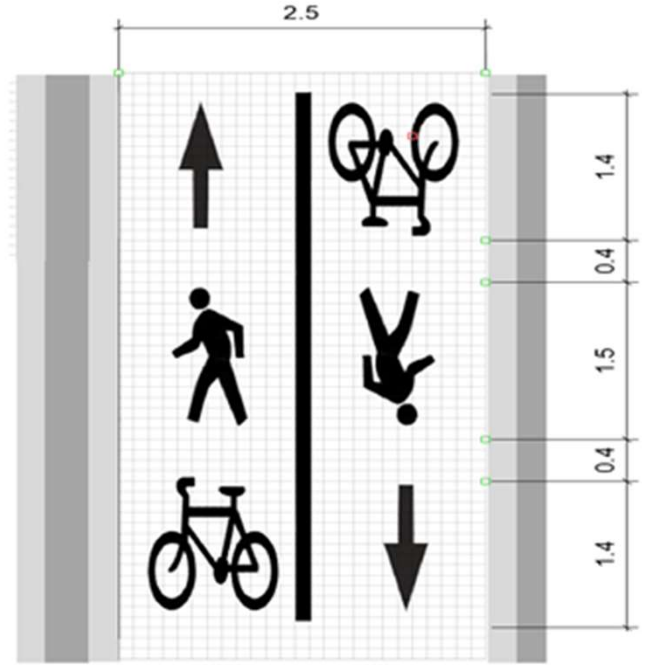
Eastbourne Community Board  
June 2024

*Proud*  
I'M PART OF IT

**HUTT CITY**  
TE AWA KAIRANGI

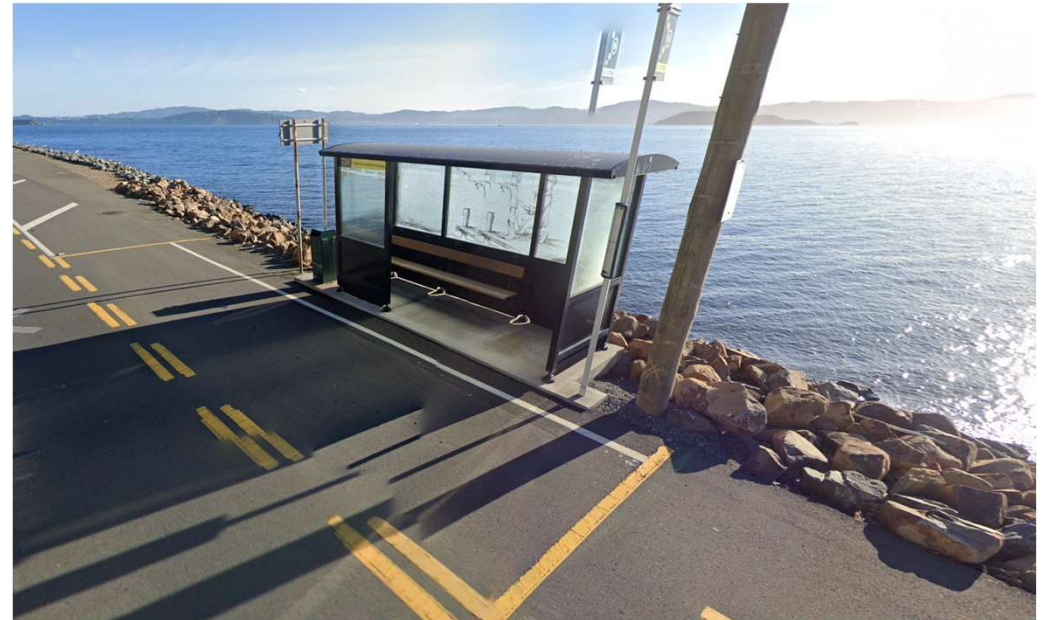
# Mā-koromiko

- Construction complete and asset being transferred to HCC.
- Graphic markings to be added (likely in July)
- Defects list to be closed out



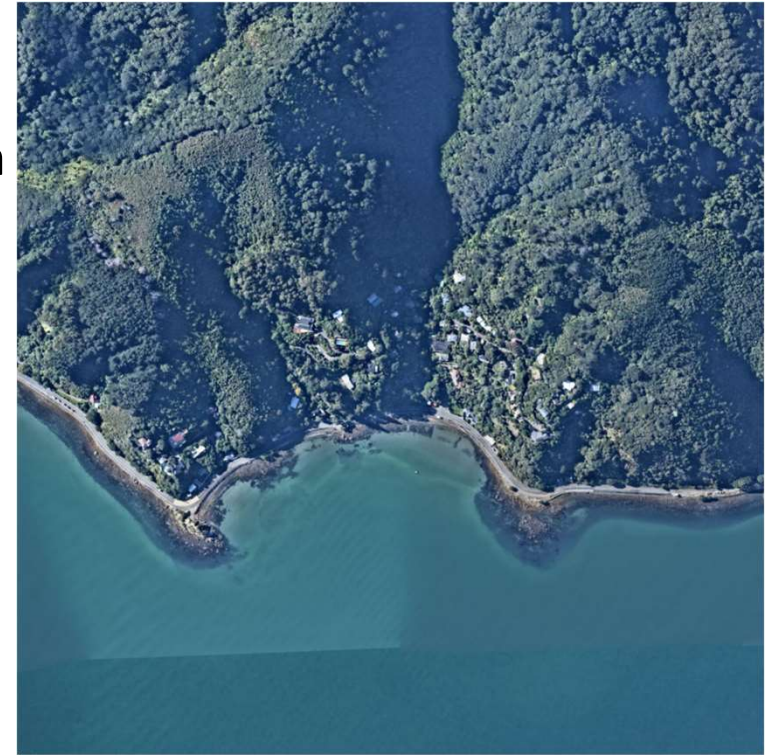
# Sunshine Bay

- Nearly 95% of foundations and seawall blocks installed
- Bus stop and shelter temporarily relocated 100 metres south to allow for construction
- 370 metres of sewer pipe installed (just over 50% of total)
- Sewer main in south requires design change, which has shifted the programme
- Aim to complete whole bay by end of 2024



# Mahina Bay

- Bay Specific Urban Design Plan submitted for certification
- Power poles shifted to seawall, embedded in concrete sleeves
- Northern bus stop confirmed to be removed
- Property acquisition complete
- Likely start in early 2025



# York Bay

- Half of precast seawall blocks installed.
- Over 75% of ribs installed (pictured) for deep foundation
- Additional crew brought in to accelerate progress
- Beach nourishment completed before end of August 2024
- Aim to complete October 2024



# Whiorau Reserve

- Construction underway on Bird Protection Area measures.
- End of June target for rope-and-post fence, initial penguin boxes, interim gates and planting underway.
- Stage 2 – to be confirmed – remainder of penguin boxes and permanent gates



# Whiorau / Lowry Bay

- Construction began early June on seawall and shared path
- Potential removal of beach access stairs in northern end – these were a potential ‘conflict’ zone and this improves ecology benefit
- Temporary bus shelter will be installed on a section of seawall north of current location when we reach it



# Ngau Matau / Sorrento Bay

- Bay Specific Urban Design plan is being certified.
- Final design to be completed in the next few months.
- Restrictions on construction activity in southern end during oystercatcher breeding season to work around.





# Bishop Park Bird Protection Area

- Repairs are confirmed for the existing fence
- Continuity of existing fence design, along the grass boundary
- Fence will have maximum gap width between palings (not a solid fence)
- Nesting boxes and planting plan to come
- Pre-construction activity has begun
- Construction start late July/early August 2024.



# Bird education campaign

- Working with Muritai School and Wellesley College to provide education programme looking at environmental and ecological impacts and opportunities associated with Tupua Horo Nuku
- Last term Muritai School learned about different ecosystems and made 'biosphere terrarium'
- Next term, they'll learn about kororā/little penguin habitats, with visits from project ecologists



# Thank you

*Proud*  
I'M PART OF IT

**HUTT CITY**  
TE AWA KAIRANGI