



**Te Ara Tupua Alliance**

Shifting gear to connect past, present and future

# Project Update to Eastbourne Community Board

13 February 2024



# Mā-koromiko

- Wildlife Permit was issued Friday 9 February. This will allow us to relocate lizards in the vegetation at the southern end of Mā-koromiko.
- We're scheduling this work to begin the week of Monday 19 February.
- Once they're relocated, we can finish the shared path.
- This includes removing vegetation, etching designs into the shared path and other minor finishing works.
- We expect this will begin in March 2024 and take approximately six weeks.
- Likely to be a shoulder closure rather than a lane closure.

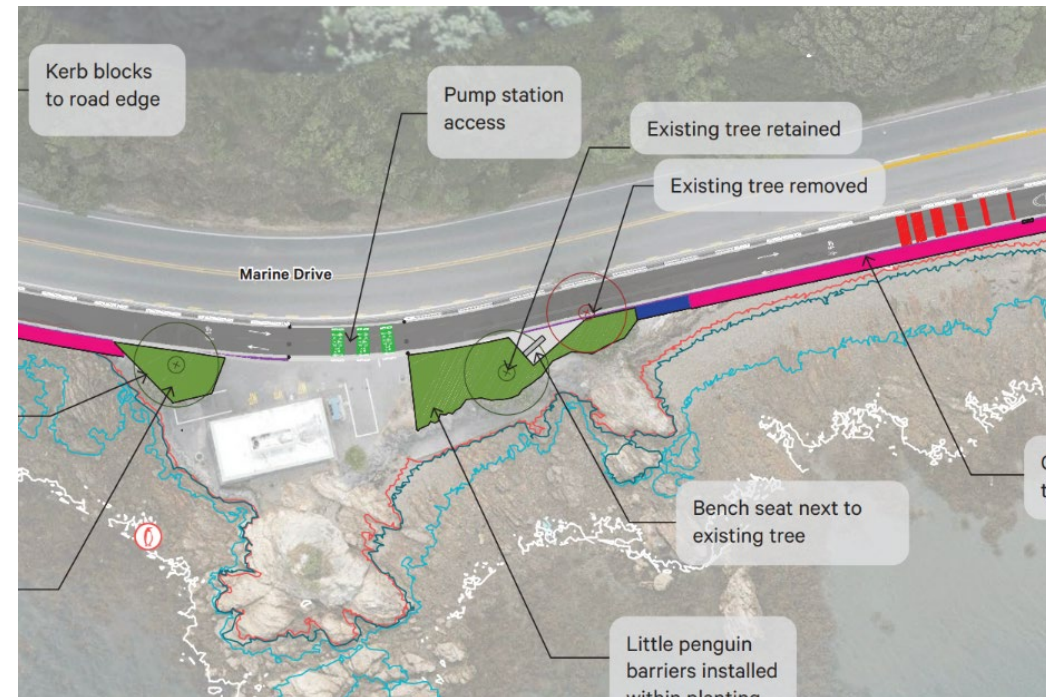
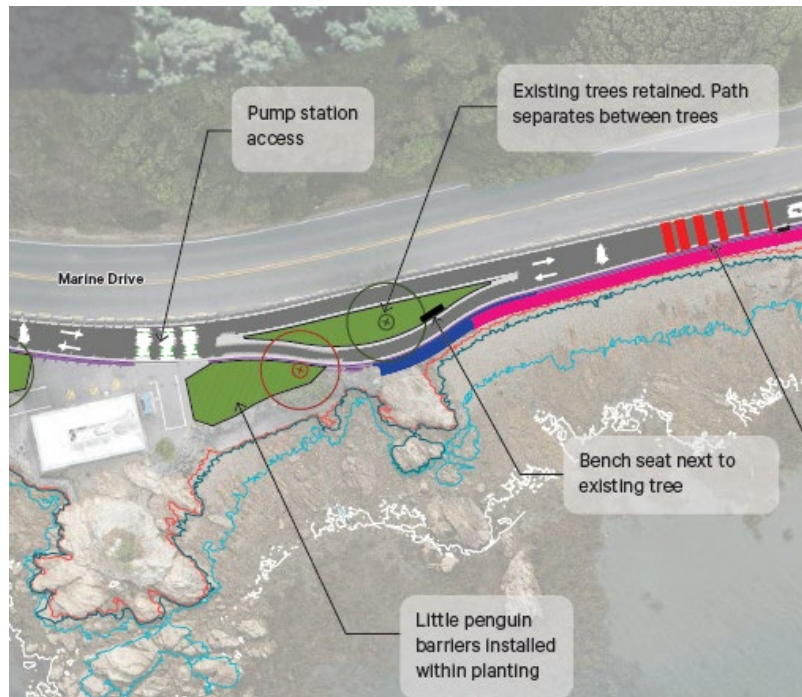
# Sunshine Bay

- We're making good progress in this bay, with approximately:
  - 400 of 525 metres of foundation poured – roughly 3/4s
  - 155 of 240 seawall blocks placed – roughly 3/5s
  - 90 metres of sewer main has been installed
- On Friday 16 February, we'll be locating where the sewer main runs along the southern part of the bay (from the Challenge station towards Days Bay).
- This requires shutting off fishing access in the area through the morning as we work in the area.
- This will be an extension of the lane closure for the day.
- We'll begin general work in the southern area in April 2024. This will require closing fishing access in the worksite area. We'll keep the community informed as we finalise dates.



# York Bay

- Foundation pours underway, with 37 metres poured.
- Proposing to relocate Atkinson tree to Whiorau Reserve near the northern entrance.
- Design tweak swaps tree to be removed and simplifies path construction.



## Whiorau Reserve

- BSUDP has been submitted for certification.

## Whiorau / Lowry Bay and Sorrento Bay

- Consultation has concluded on these bays.
- BSUDPs are being updated and prepared for certification.
- Planning to begin construction in Whiorau / Lowry Bay in May 2024.

# Thank you.



**Te Ara Tupua Alliance**  
Shifting gear to connect past, present and future