



**Te Ara Tupua Alliance**

Shifting gear to connect past, present and future

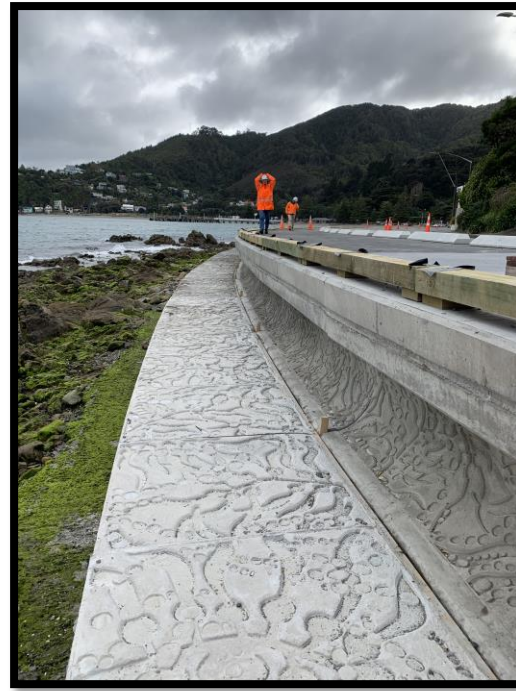
# Project update to Eastbourne Community Board

31 October 2023



# Ma Koromiko

- Seawall, culverts, stairs, and paving completed
- Finishing touches happening to early November
- Southern tie-in on hold due to lizards
- Soft opening on the 19<sup>th</sup> November



# Ma Koromiko – outstanding works

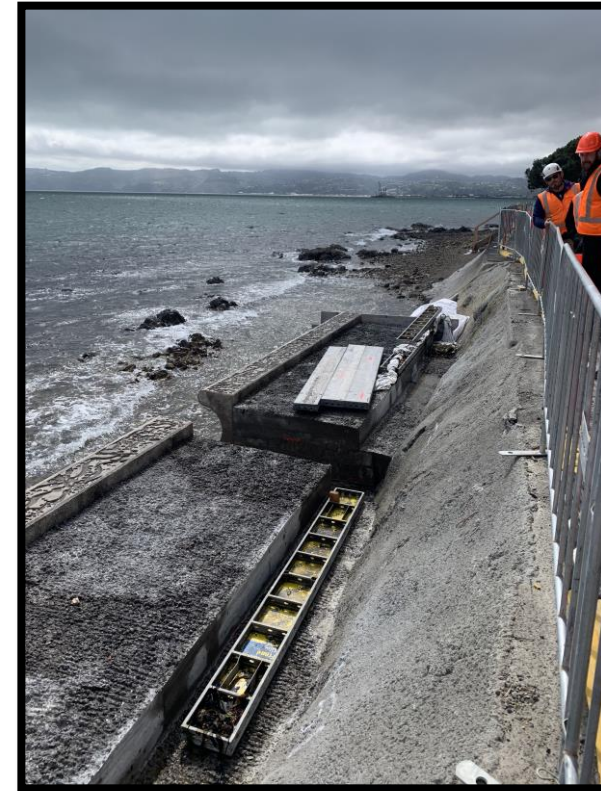


- Outer edge of the southern end (waiting on DOC to approve lizard relocation)
- Cultural markings
- Furniture
- Wayfinding signage (holistic design closer to completion of the path as a whole)



# Sunshine Bay

- 203m of excavation and foundation construction, 60 seawall units
- Breaking of existing seawall
- Trenching for wastewater main will commence mid-Nov



# Northern Bays



## York Bay

- Management plans being completed to allow construction to start in late November. Construction work packs being prepared.
- Casting for York Bay on-going.

## Whiorau/Lowry Bay and Sorrento Bay

- Stage A design completed and being reviewed by HCC
- BSUDP consultation to start in late November
- Lowry Bay future proofing design looking into crown walls for additional resilience.
- Discussions on-going with CentrePort on Ngau Matau.

# Whiorau Reserve



# Bird Protection Areas



# Thank you.



**Te Ara Tupua Alliance**  
Shifting gear to connect past, present and future