

# ***Tupua Horo Nuku*** **Update**

**Eastbourne Community Board**

**Tuesday 24th February 2026**

The bottom right corner of the slide features several thick, light blue wavy lines that flow from the right edge towards the center, creating a modern, abstract graphic element.

# Ngau Matau / Point Howard

- Construction complete
- Minor furniture and signage



# Whiorau / Lowry Bay

- All deep foundations completed
- Construction continues South
- Includes shared path past Whiorau Reserve



# Mahina Bay

- Seawall construction completed
- Final pavement preparation and sewer main renewals continue



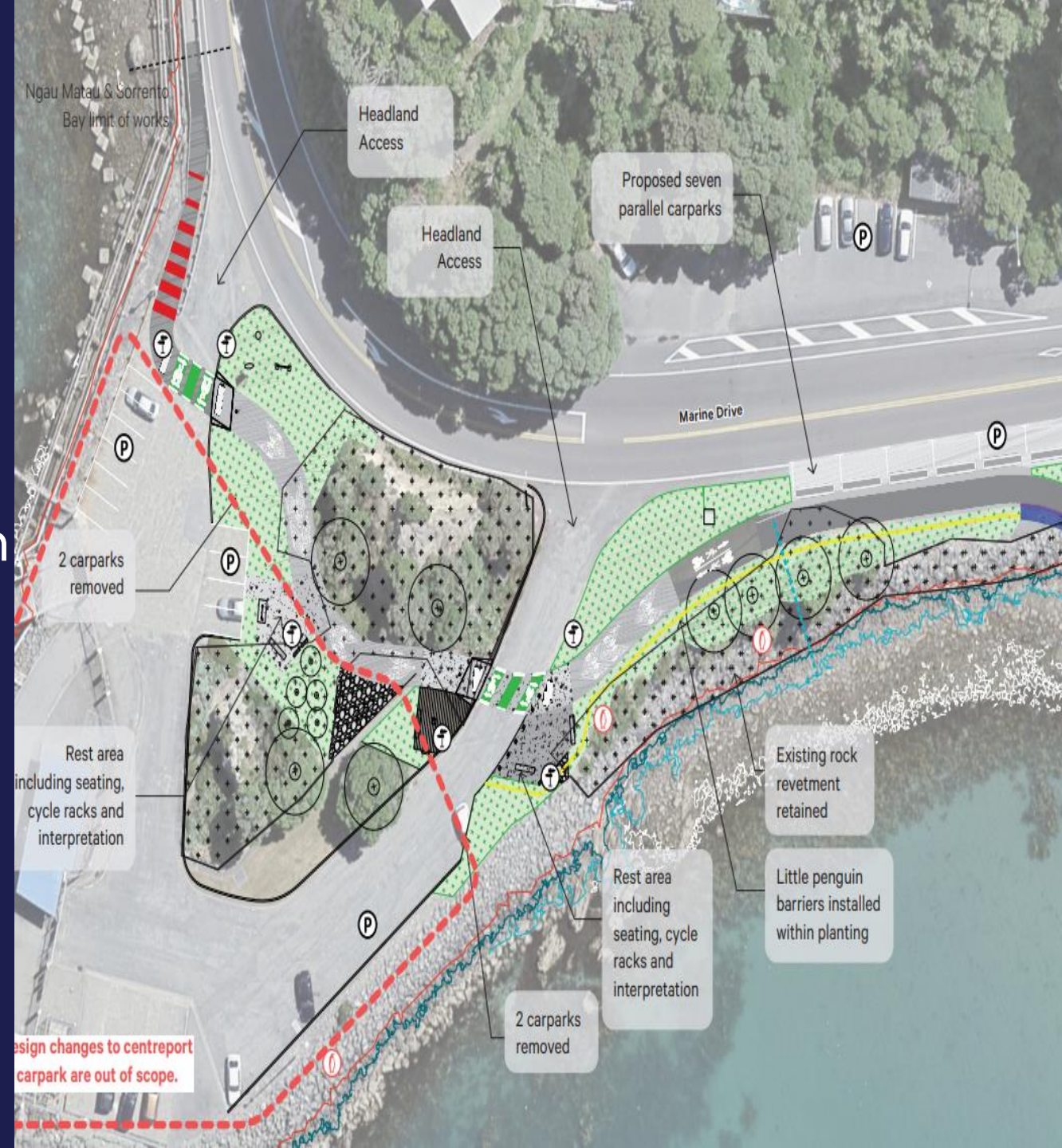
# Sunshine Bay

- Sewer main continues south from Mahina
- Final surface finishing
- Southern Transition



# Other Items

- Informal Access Points
- Carriageway Repairs
- Blue Boat Shed Removal
- Vehicles Accessing Shared Path
- Ngau Matau / Point Howard Regional Strategic Gas and Oil Upgrade.



# Activation Event

- Planning for Mid-April
- Parking Will Be Limited
- Food and Activities
- Come along and join the team as we celebrate this significant event



**Kia ora**  
**Thank You**

*tupuahoronuku@*[huttcity.govt.nz](mailto:tupuahoronuku@huttcity.govt.nz)

