

# Seaview energy resilience project

Eastbourne Community update August 2023



# Project Recap

## The Wharf

---

50yrs-old

Needs repairs and upgrading

Supports main fuel pipeline

Critical lifeline asset

## The Pipeline

---

Supplies 20% of NZ's fuel

Meets lower North Island needs –  
Wellington to South Taranaki and  
Hawke's Bay

Needs replacement



# Three Project stages

## Stage 1

---

- Replace fuel pipeline from Ngāu Matau/Point Howard to Port Road
- **COMPLETED**

## Stage 2

---

- Upgrade Seaview Wharf and pipeline section - ship berth to Point Howard
- **UNDERWAY**
- **Completion 2024/2025**

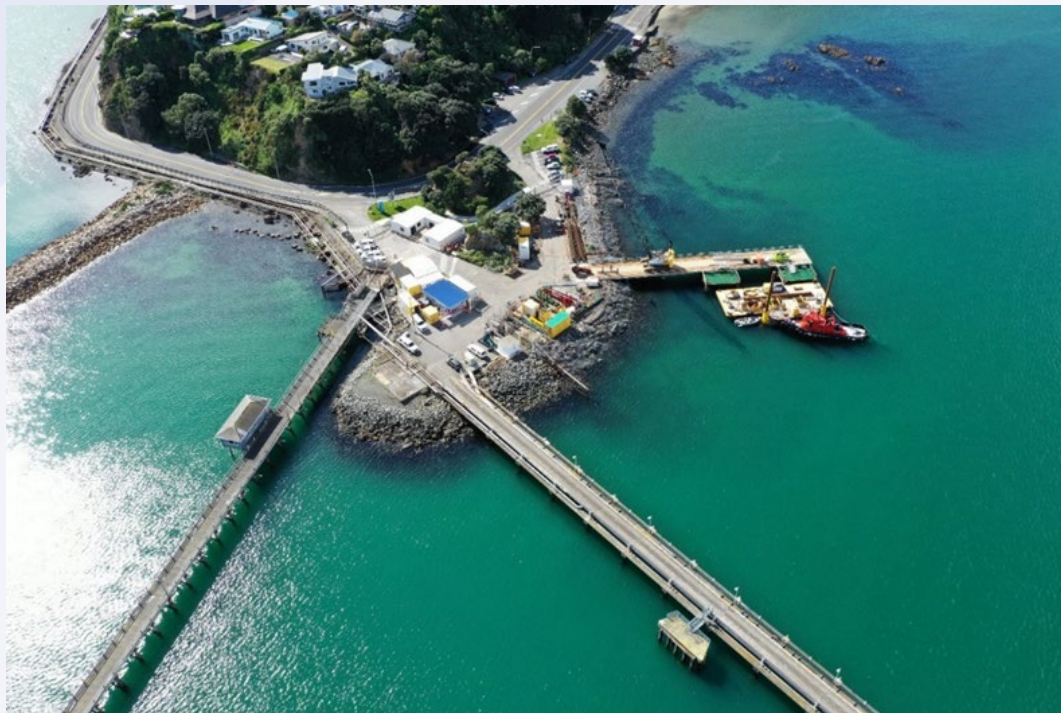
## Stage 3

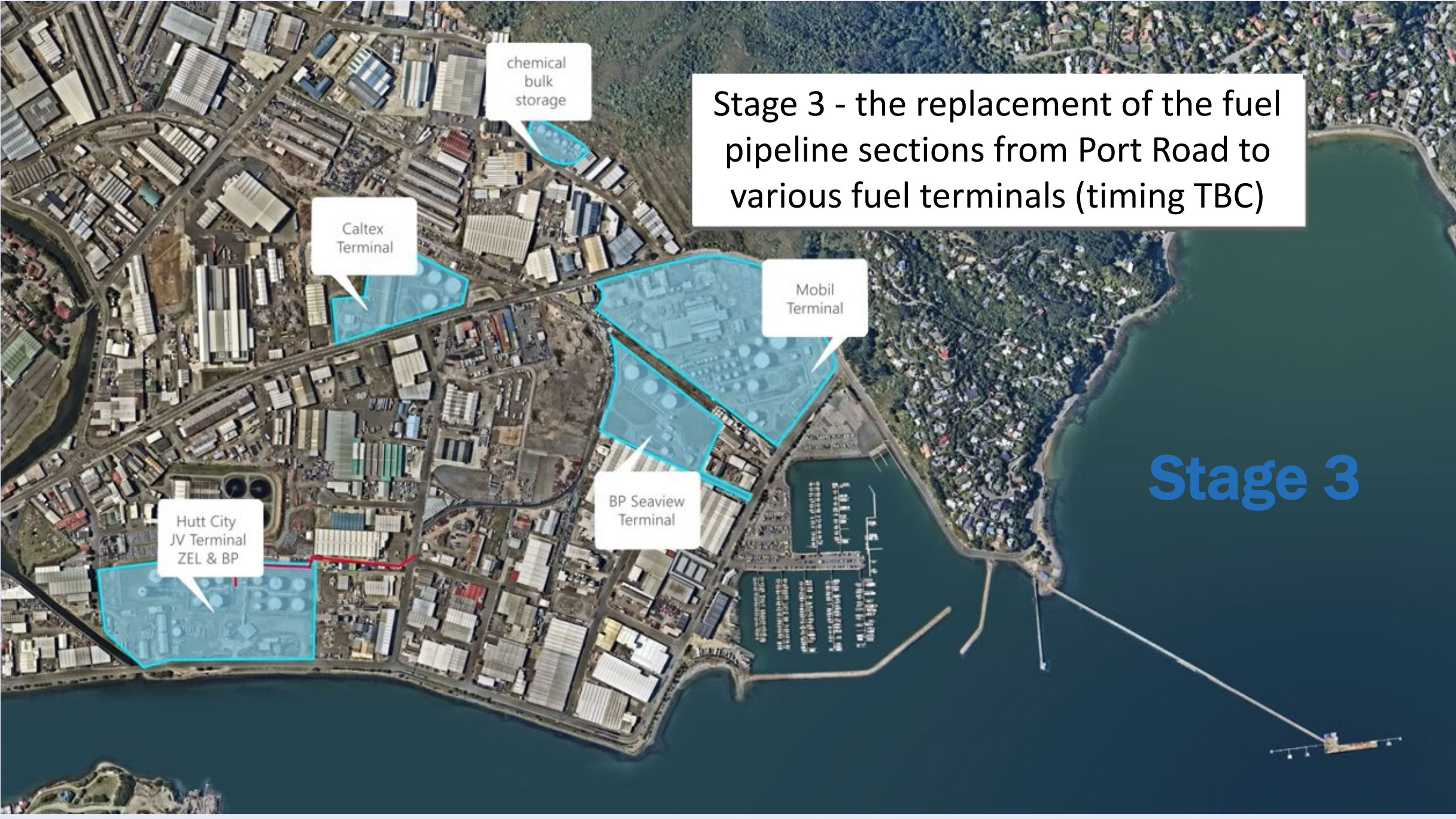
---

- Replace pipeline sections – Port Road to fuel storage terminals
- **PLANNING UNDERWAY**
- **Timing TBC**

**Stage 1 (right) – Fuel pipeline replacement along Seaview Marina foreshore**

**Stage 2 (below) – Main wharf upgrade and enabling works**



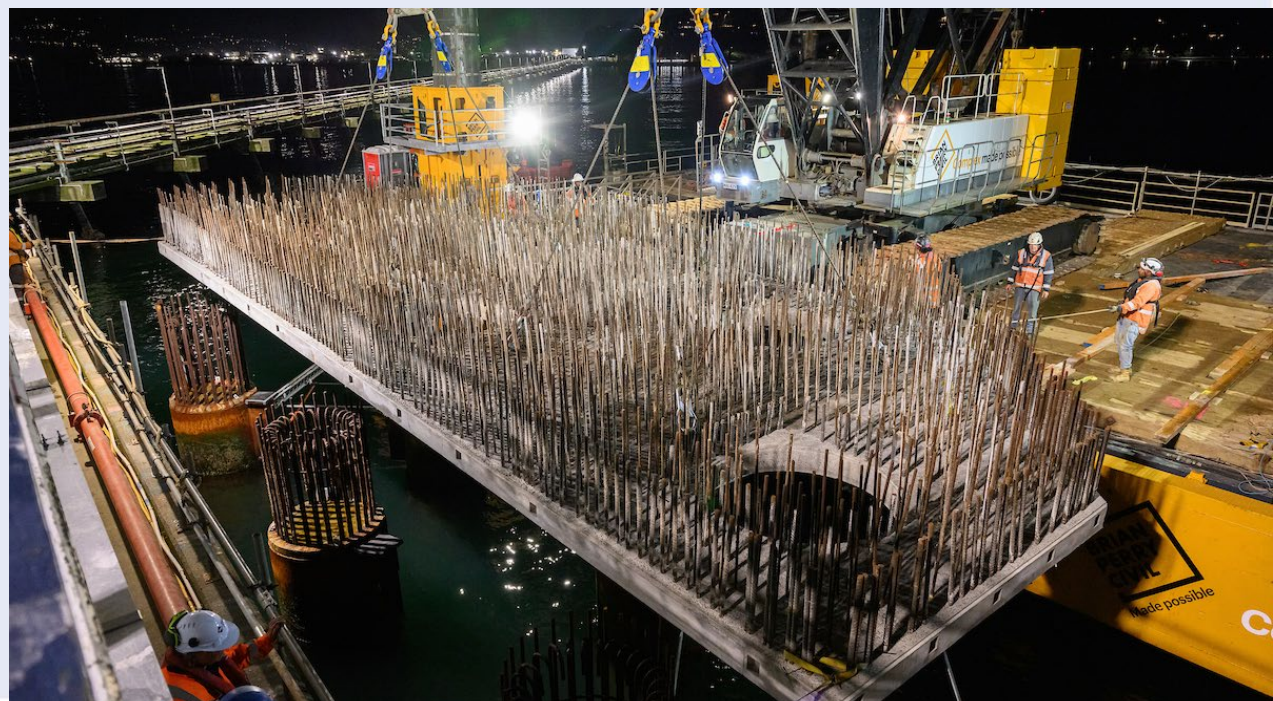


Stage 3 - the replacement of the fuel pipeline sections from Port Road to various fuel terminals (timing TBC)

Stage 3

## Stage 2 key milestones

- Site established and specialist plant secured
- Main wharf berthing structure strengthening (13 piles, 1.5m diameter; average 25m; 2 of 3 pile caps installed).
- Work on mooring dolphin upgrade in 2024
- Approach wharf options analysis is ongoing



# Environmental management

## Korora

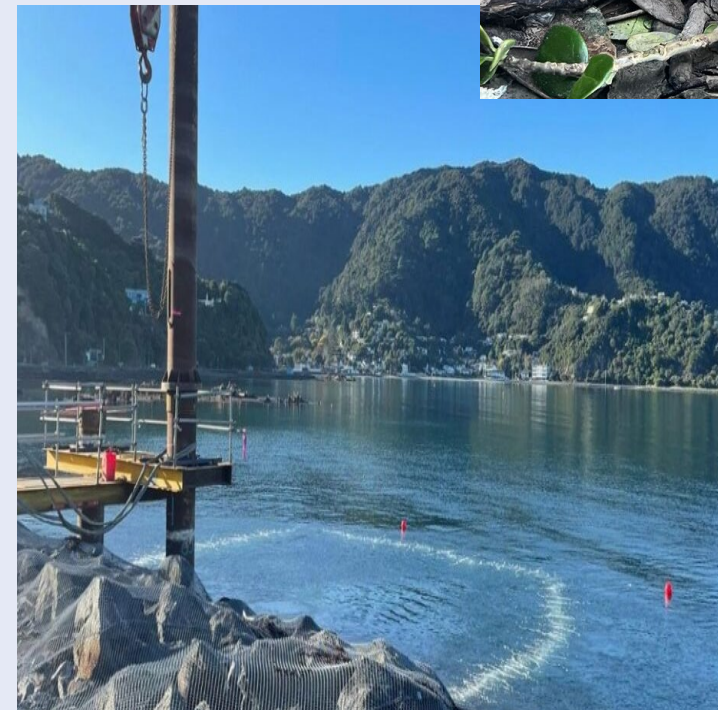
- Protective netting removed
- On site nesting boxes in use

## Noise

- Proactive mitigation of site-based noise
- Incidents and complaints

## Marine species protection

- Underwater noise mitigation (bubble curtains)



# Ngāu Matau/Point Howard reinstatement

- Co-design enhancement of Ngāu Matau
- Point Howard Wharf removal (HCC)
- Integration with Tupua Horo Nuku/Eastern Bays Shared Path Project





[www.seaviewproject.co.nz](http://www.seaviewproject.co.nz)

THE SEAVIEW ENERGY  
RESILIENCE PROJECT

**The Seaview Energy  
Resilience Project:** Protecting a  
critical asset



# Q&A

