



# East Harbour Regional Park

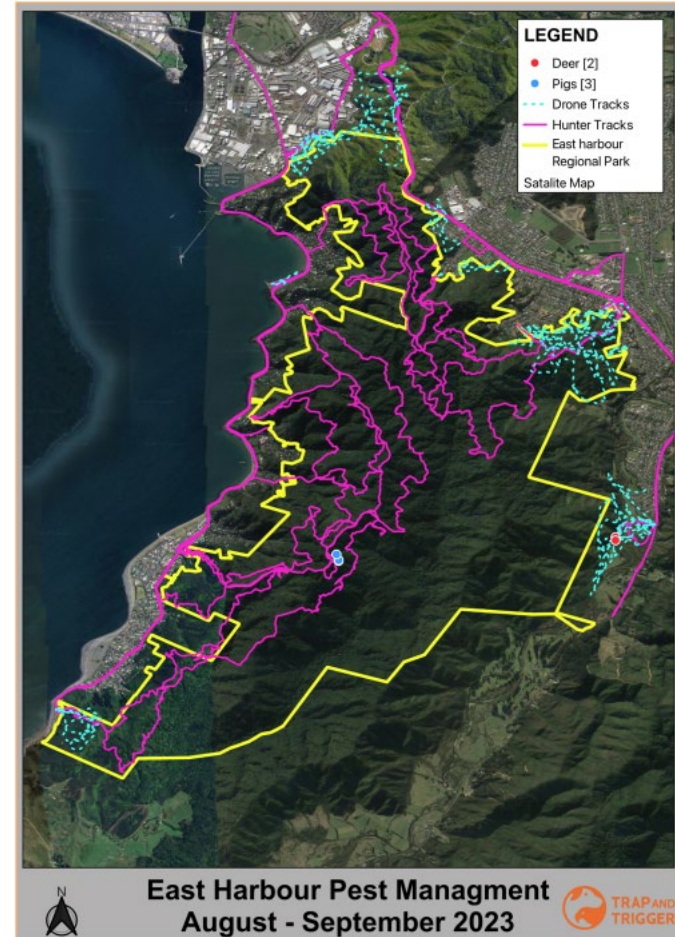
Eastbourne Community Board





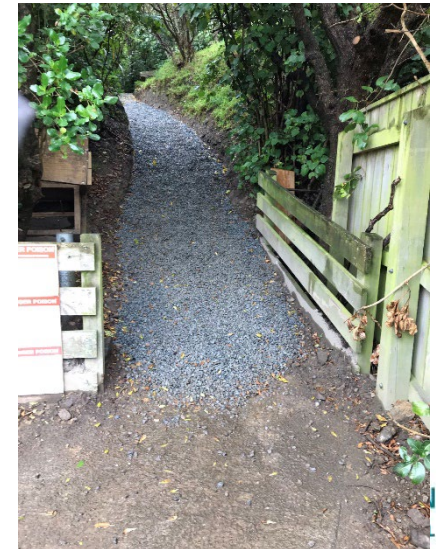
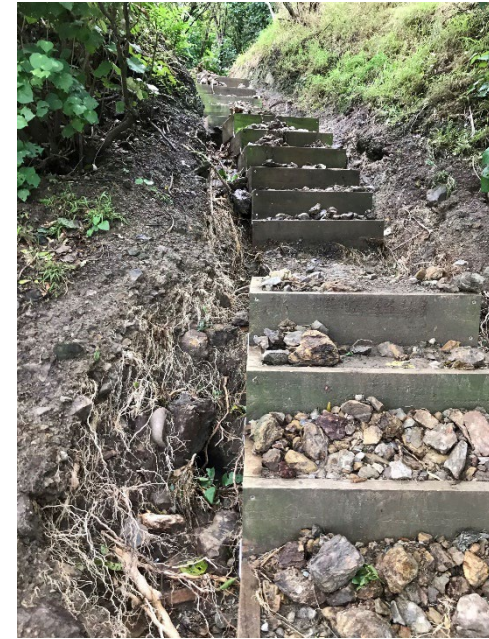
# Northern Forest

- **Biodiversity**
- Public hunting ballot (30<sup>th</sup> Mar 30<sup>th</sup> April)
- Professional cull Autumn 2023 result (Spring 13 days from 6<sup>th</sup> May)
- Cat traps installed on Wainui side
- Rodent monitor results
- Small mammal monitoring
- Cattle in at butterfly creek - removed



# Northern Forest Infrastructure

- Bus Barn entrance
- Butterfly creek picnic area Trees – monitor to be booked in for winter
- Butterfly creek toilet
- Maintenance team to cut Lowry bay tracks





# Parangarahu lakes

## Biodiversity

- Planting season 2024
  - 2 to 3000
  - MIRO nursery – Shade cover
- Dotterels – gathering to depart
- Dragonflies – positive ID for new species *Baron anaxpapuensis*



# Parangarahu lakes

## Infrastructure

- Toilet – 3 days to construct  
Feb/March may be disruption on the pencarrow rd
- Lakes and light house event 2<sup>nd</sup> March
- FIRE RISK – Lakes currently at Very High – no access after 13.00 (May Close)



Greater Wellington Regional Council

### Wildfire Activity Control Guideline

Fire Weather Index Triggers and Operational Mitigations

Bearing Head

**Draft operable**

# Baring Head/Orua Pouanui

## Biodiversity

- Lizard Survey
- Planting Programme the target of 50-60
- Learnings from last year
- Pest plant and animal control has been ramped up





# Baring Head/Orua Pouanui

## Infrastructure

- New Automatic gate
- Assistant Light keepers house update
- Directional signage
- FIRE – CLOSING

