

Te Ara Whakamua o Te Awa Kairangi ki Tai

Lower Hutt Climate Action Pathway

Where we are heading

Net zero emissions by 2050. Building community resilience

This climate action pathway provides direction on where we need to target our future effort to reduce our transport, energy and waste emissions. It also focuses on wairuatanga – connecting with our natural world and preparing for the adverse effects of climate change.

2022–2024

Act now and connect what's underway

As a community we are clear about where we are going and what we need to do to get there. We acknowledge the climate crisis, take responsibility for our contribution and understand the strength of our collective response.

2025–2029

Accelerate Action

We will continue to challenge the status quo, accelerate climate initiatives and measure our collective impact. Our firm action will ensure we are on track to halve our emissions by 2030. As a future focused and innovative city, our courage and effective climate action will lead Aotearoa.



2030
50% reduction in city emissions, 30% reduction in biogenic waste emissions (methane)



2050
Net zero carbon emissions and a climate resilient city

2030–2050

Delivering for the future

We are on the Race to Zero with climate action delivering a steady and substantial reduction in emissions. We will be prepared for the impacts of climate change, with connected and resilient communities. Our connection to the natural world is a part of our everyday lives; Papatūānuku and Ranginui are acknowledged and celebrated throughout the city.

Collective Focus and Community Response

Transport

Walking and cycling

- Expand the walking and cycling network
- Improve access to bikes and bike parking
- Support tamariki to safely walk, cycle or scooter to school
- Encourage people to walk and cycle short trips

Electric Vehicles

- Develop a low carbon public transport network
- Encourage government and large businesses to switch to EV fleets
- Expand the electric charging network

Public Transport

- More reliable and frequent services
- Improve access to public transport
- Make it easier to connect to different forms of public transport

Reduce Car Use

- Remote working at home and local co-working spaces
- Encourage businesses to support reduced vehicle use
- Support innovative new ways of moving around
- Investigate how we can reduce driving in urban centres

Energy

Energy generation and use

- Encourage actions to reduce energy use
- Support lower carbon building practices
- Transition out of fossil fuels
- Explore local renewable energy generation

Consumption & Waste

Refuse, reduce, reuse, recycle

- Support the development of a circular economy
- Embed and improve HCC's kerbside rubbish and recycling
- Reduce food and green waste
- Improve methane capture at landfills

Te Taiao

Connect with our natural world - Wairuatanga

- Strengthen our connection with te Taiao
- Restore biodiversity and improve carbon sequestration
- Develop nature-based solutions to tackle the impacts of climate change

Future City Design

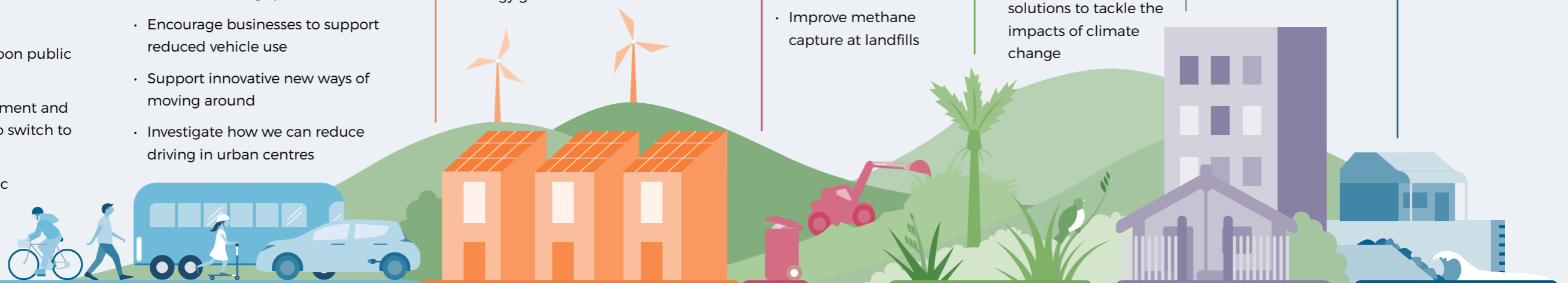
Living well locally

- Encourage living well locally
- Strengthen communities through connected neighbourhoods
- Ensure Papatūānuku is acknowledged through the city

Climate Adaptation

Preparing for the future

- Improve our understanding of risks of sea-level rise and flooding
- Plan and continuously adapt
- Build community resilience



Percentage of total emissions

56%

30%

7%

Immediate action on reducing carbon emissions

Adapting and building resilience for the future