

Seaview Energy Resilience Project Update – November 2021

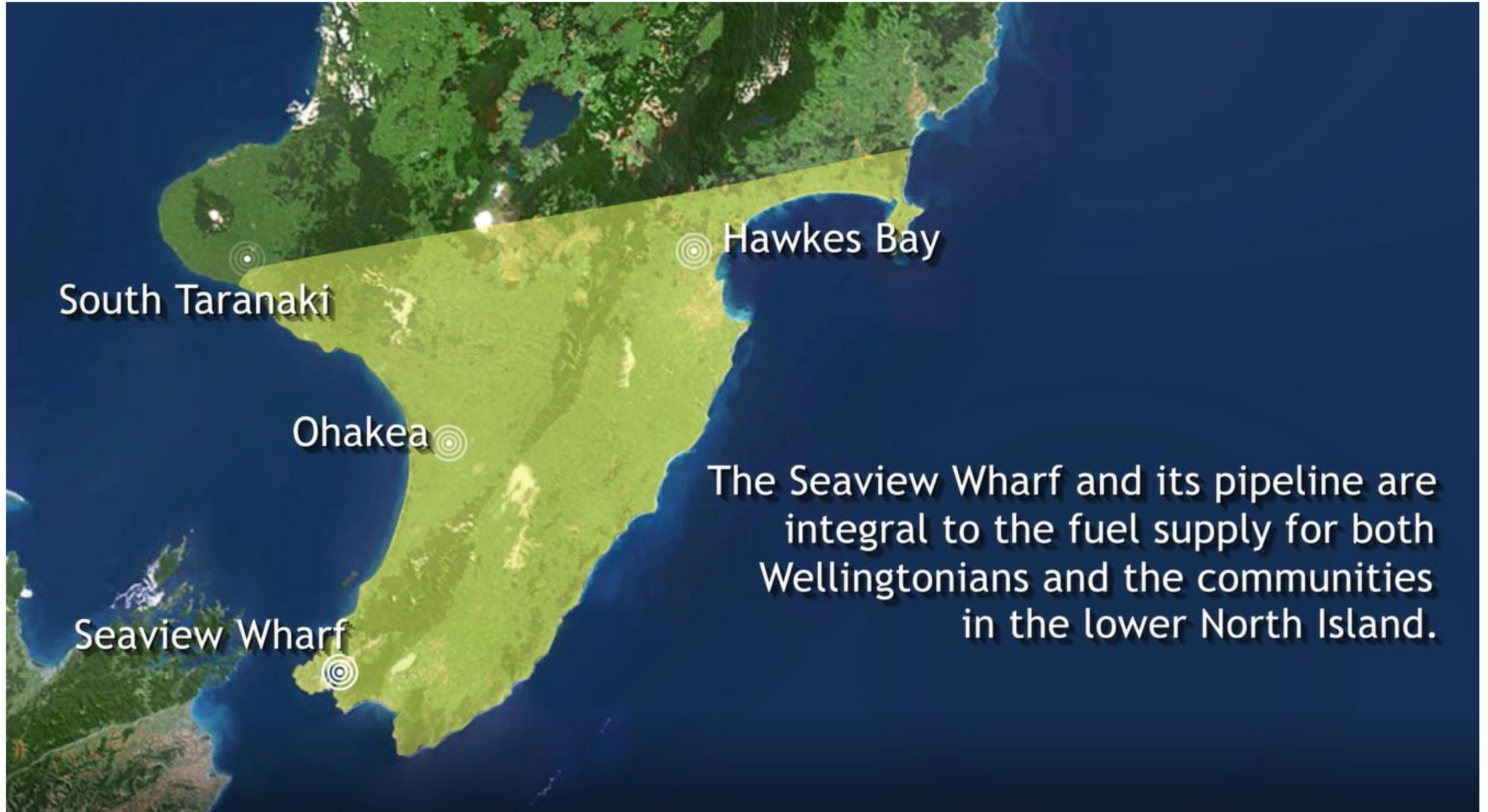


What are we doing and why

- Wharf 50 years in service and requires upgrade/repairs for future resilience.
- Main fuel Pipeline (owned by Z, BP, Mobil) requires upgrade.
- Seaview Wharf, bulk fuel pipeline and storage network essential to the regional economy.
- A critical lifelines asset.
- Future-proofing with capability of carrying alternative, non-carbon fuels.



Supplying fuel to 20% of NZ



South Taranaki

Hawkes Bay

Ohakea

Seaview Wharf

The Seaview Wharf and its pipeline are integral to the fuel supply for both Wellingtonians and the communities in the lower North Island.

The Project – Three stages

Stage 1

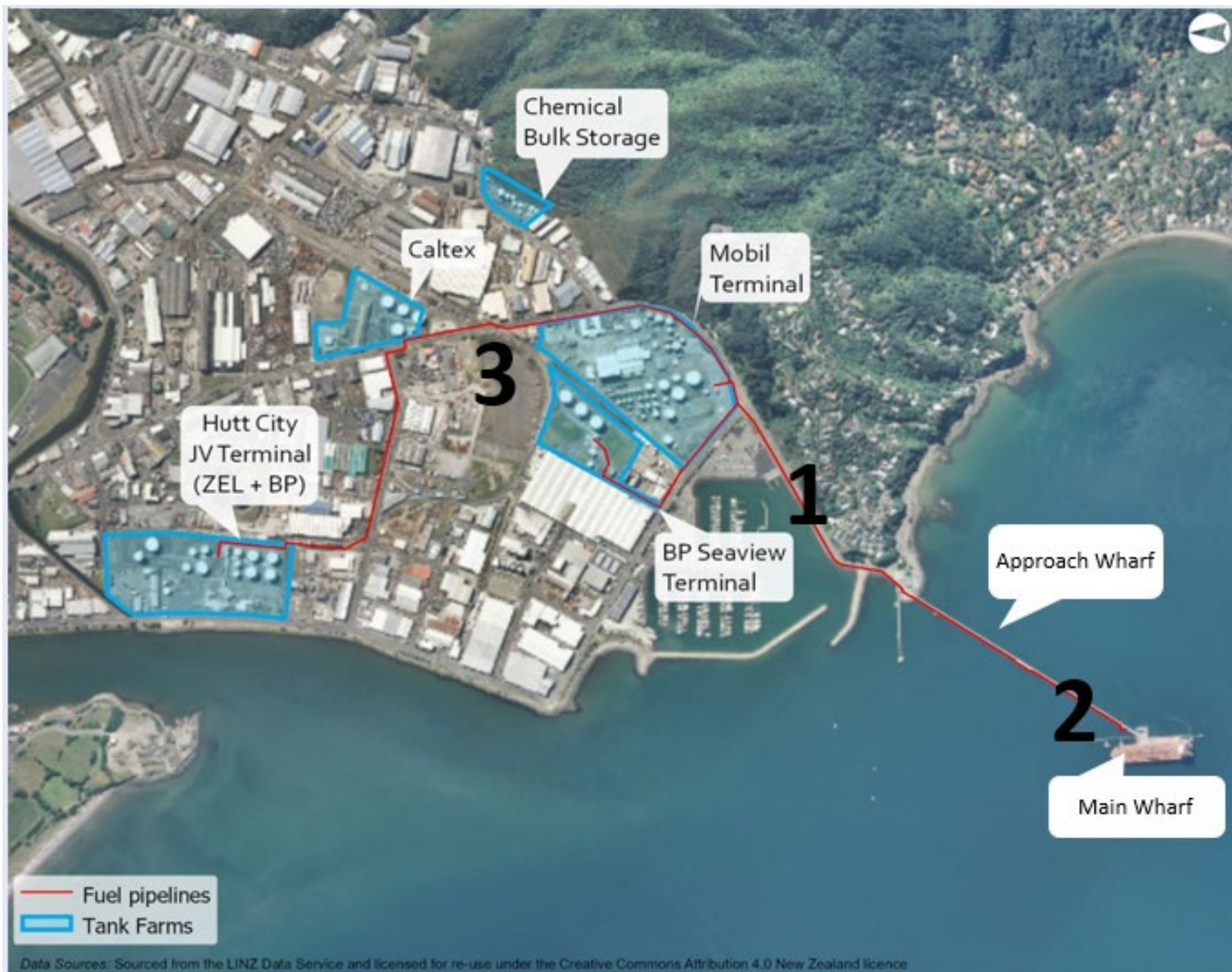
- Replacement of fuel pipeline from Ngamatau/Point Howard to Port Road
- Commenced January 2021 and due to be completed early 2022.

Stage 2

- Upgrade of Seaview Wharf and pipeline section from ship berth to Point Howard.
- Site establishment Dec 2021, works underway Mar 2022.
- **2021 - 2023**

Stage 3

- Replacement of pipeline sections from Port Road to fuel storage terminals.
- **2022 - 2023**



Three stages of Seaview Energy Resilience Project

Stage 2 works – Point Howard



Stage 2 works



Stage 2 works contd*



Stage 2 works contd.*



Solutions being considered incl. upgrade piles / decking

Approach Wharf

*Indicative only – pending approvals

Protecting the Environment

Marine Mammal/Little Blue Penguin

- Korora/Little Blue Penguin protection plan.
- Sound minimisation plan for marine mammals

Sound Management

- GWRC/Hutt City Council certified acoustics management plan
- Sound mitigation
- Community engagement

Aquifer Protection

- Wellington Water/GWRC hydrologists closely involved
- Monitoring and protection measures



Stage 2 works sound management

- Designed to comply with District Plan limits
- Construction typically 0700-1800 Mon-Sat
- No construction during fuel terminal operational activity
- Monitoring of sound levels
- Residents within 800m of works to be directly updated about upcoming activity
- Enquiry and complaints hotline



800m radius of works



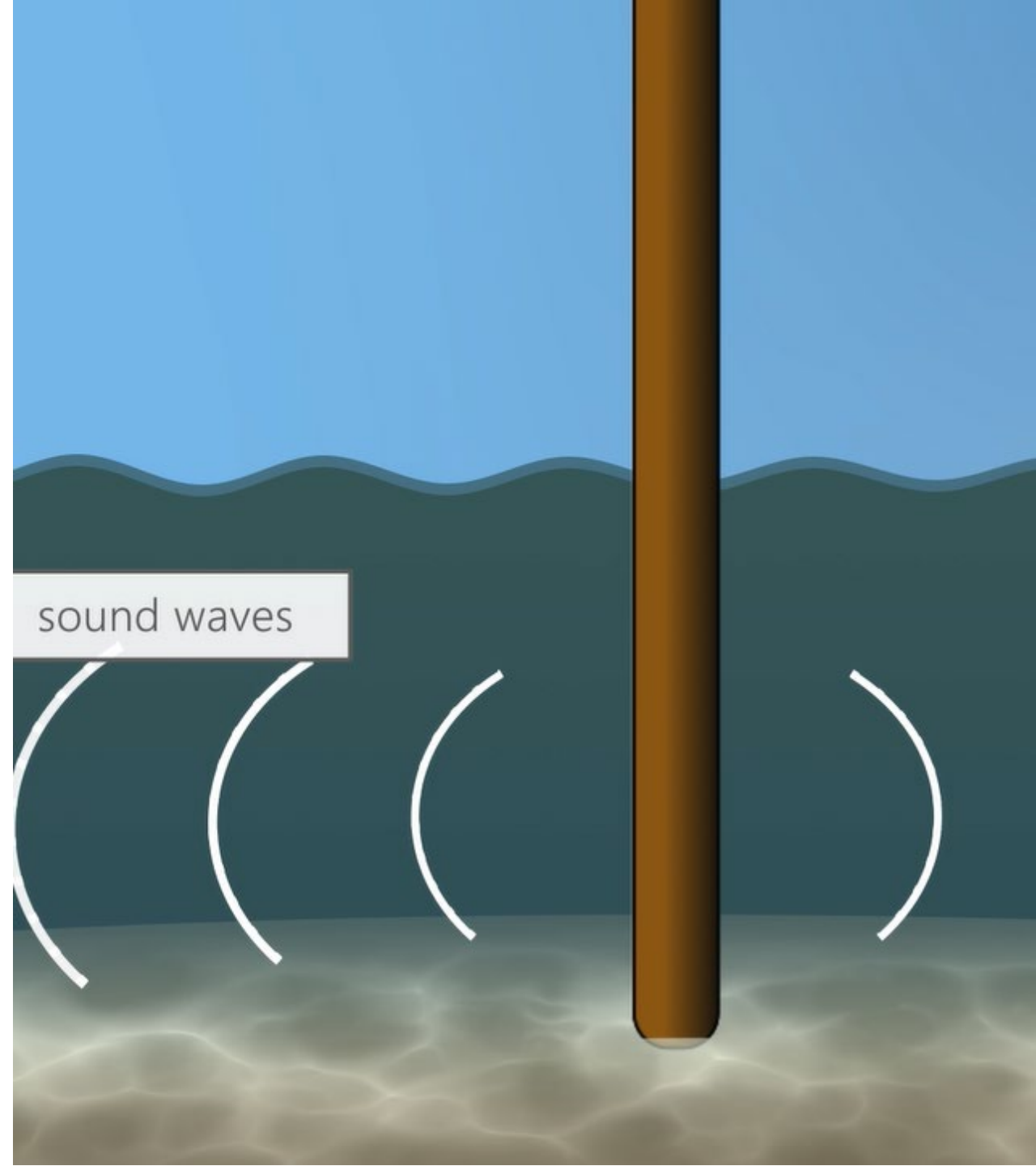
Kororā/Little Blue Penguin protection

- Collaboration with DOC and expert ecologists, GWRC and local community experts.
- Regular monitoring of Kororā activity and nest sites.
- No disruption during breeding and nesting seasons.



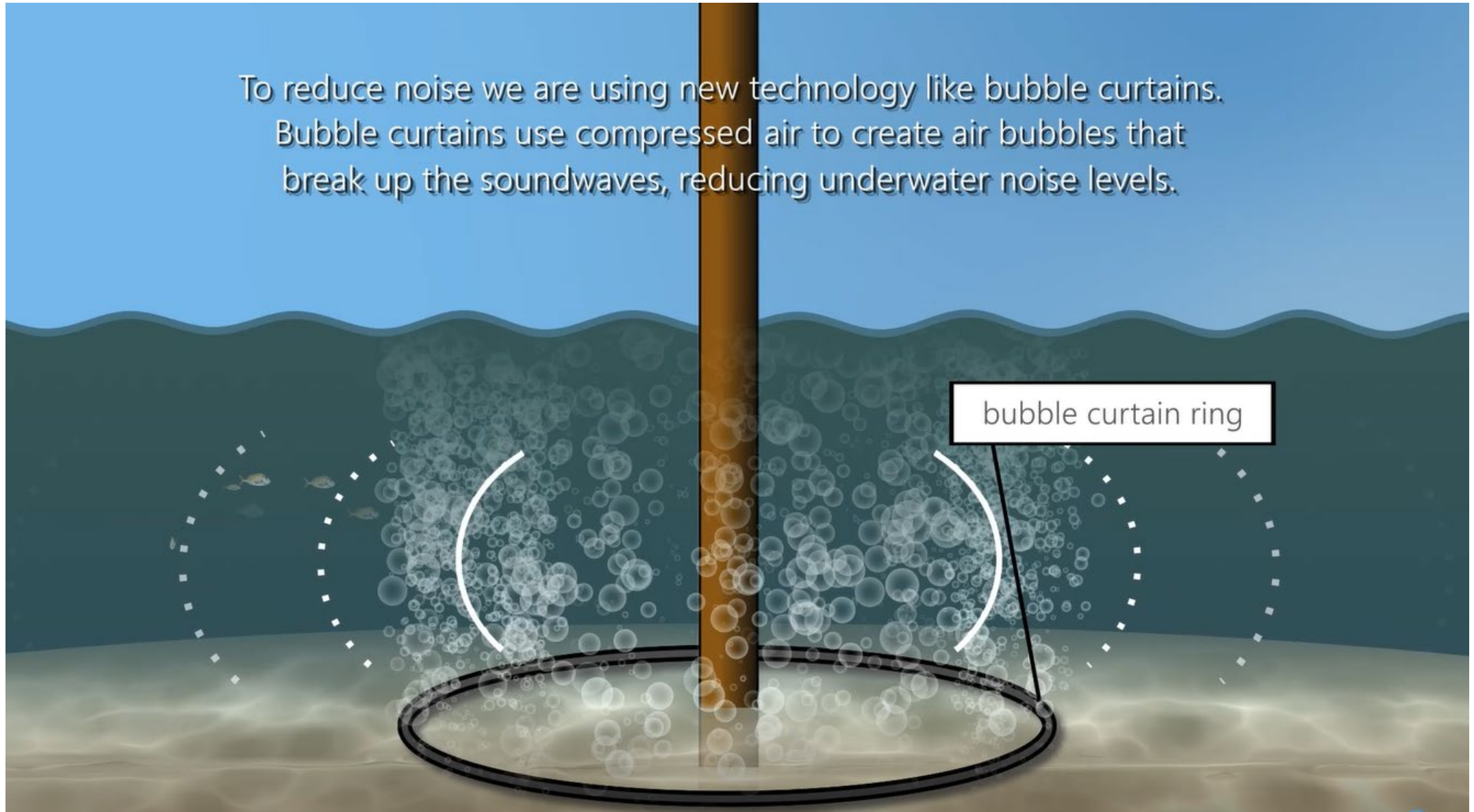
Marine Mammal protection

- Detailed plan prepared by experts at Cawthron Institute.
- Special attention to managing underwater sound generated by piling activities.
- Mitigations including observers and 'bubble curtains' to be deployed.



Bubble curtain

To reduce noise we are using new technology like bubble curtains. Bubble curtains use compressed air to create air bubbles that break up the soundwaves, reducing underwater noise levels.



THE SEAVIEW ENERGY
RESILIENCE PROJECT

The Seaview Energy Resilience Project: Protecting a critical asset



Engagement

- seaviewproject.co.nz
- Via the website, ability to sign up for regular (monthly) updates.
- Ongoing engagement with a wide range of stakeholders.
- Consulting with Taranaki Whānui and Ngāti Toa Rangatira.
- Targeted communications to local residents.
- Enquiry and complaint hotline
- Community site visits (COVID restrictions dependent).



Any questions?

