

Rautaki Whakatipu

Sustainable Growth Strategy 2025–2055

Petone Community Board – 10 February 2025

Overview of the Growth Strategy

- Growth planning involves looking at all the aspects of our city from housing and transport to water infrastructure, businesses, and community spaces. It also considers our natural environment, climate challenges, and cultural identity.
- Our **draft Sustainable Growth Strategy** is a long-term (30-year) document that is used to improve coordination between council's plans and strategies, regional frameworks and national direction.
- It brings together existing plans for transport, infrastructure, and open spaces, and aligns with the Long-Term Plan 2024-2034.
- We've had input from our Mana Whenua partners, central government agencies, Greater Wellington Regional Council and Metlink.
- The document itself is divided into four chapters.



Chapter 1

He whakatakinga Introduction

Introduces the purpose and strategic context of the Strategy.



National Policy Statement on Urban Development (NPS-UD)

Aims to make sure that New Zealand's towns and cities are well-functioning urban environments that meet the changing needs of our diverse communities.



Regional Future Development Strategy

A statutory document required under the NPS-UD, which sets out a long-term plan to ensure a 'well functioning' urban environment, showing where growth will be, in what form, and what infrastructure is needed to support that growth.



Sustainable Growth Strategy 2025-2055

Guides how we want our city to change over the next 30 years.

Intends to inform decision-making and investment decisions by Council, government and private sector.



Other Plans and Strategies

Various local and regional plans and strategies inform the Growth Strategy.

Lower Hutt Long Term Plan 2024-2034

Hutt City Council's priorities and projects for the next 10 years inform the Growth Strategy.

Tō tātou tāone i nāianeī rangi

Te Awa Kairangi ki Tai Lower Hutt Today

This chapter provides an overview of Lower Hutt and presents the challenges and opportunities our city faces as we grow and change over the next 30 years.



The key themes are:

- 1. Ngā hanganga**
Housing
- 2. Ngā waka**
Transport
- 3. Ngā puna wai**
Water Infrastructure
- 4. Pākihi me te ōhanga**
Business and Economy
- 5. Tuakiritanga**
Cultural Identity
- 6. Huringa āhuarangi me ngā mōrearea**
Changing Climate and Natural Hazards
- 7. Taiao me ngā whenua tāpui**
Open Space, Recreation and Environment
- 8. Pokapū hapori**
Community Facilities

Te anamata o tō tātou tāone

Te Awa Kairangi ki Tai

Lower Hutt in 30 Years

This chapter sets out our direction for Te Awa Kairangi ki Tai Lower Hutt in 30 years, the outcomes we want to see delivered and the strategic moves we need to get there. It spells out our “sustainable growth strategy” for the city.



Te ara whakamua Strategic Moves

The next section explains each strategic move, their rationale, what types of actions are recommended to give effect to them, and what their expected benefits are.



1

Enhance the heart of the city

Revitalise the central city to create a thriving neighbourhood and destination.



2

Build up the central and northern Valley Floor

Concentrate new housing in the central and northern Valley Floor.



3

Grow with Te Awa Kairangi Hutt River

Enhance resilience, recreation and biodiversity along the river.



4

Foster prepared coastal and low-lying communities

Recognise the risks of climate change and building community preparedness.



5

Cultivate well-connected economic precincts

Improve resilience of and access to employment areas.



6

Support neighbourhoods outside the Valley Floor

Sustain the access, character and services of neighbourhoods.



7

Strengthen transport options

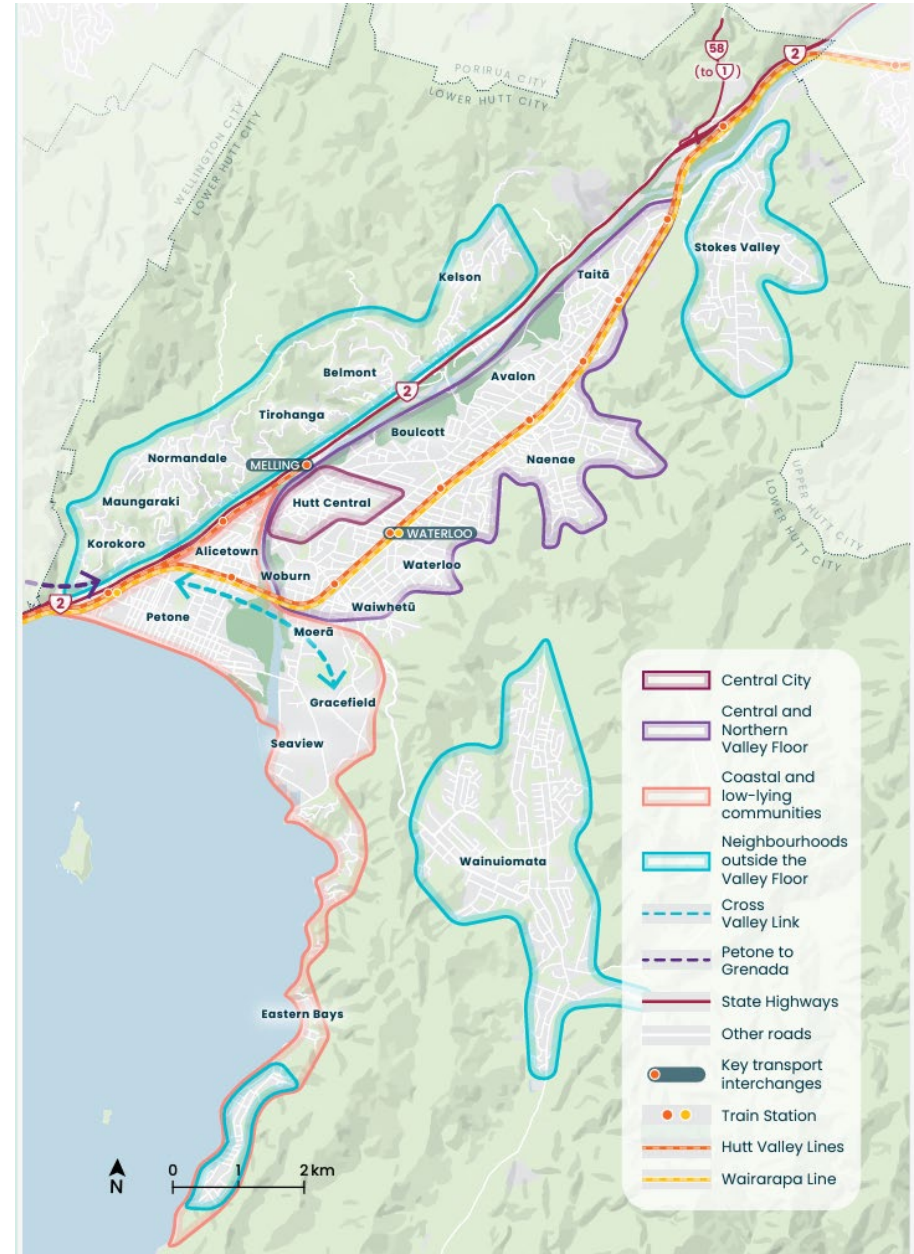
Provide a variety of transport options that make it easy to get to and around the city.



8

Create a greener and healthier city

Improve the health and wellbeing of the city and its ecosystems.



Ngā tukanga Action Plan

This chapter presents a list of actions to give effect to our strategic moves.



Whāngaihia te hunga noho takutai Foster prepared coastal and low-lying communities

Action	Action Description	Status	Lead Agency/team	
			Council	Other Agency
6. Upgrade the Petone collecting sewer	The main collecting sewer for Petone is at the end of its service life and has been assessed as being highly vulnerable. This project will deliver a replacement collecting sewer.	Planned (funded)		Wellington Water
7. Improve Petone Stormwater in Udy Street, Queen Street	Improving Petone's surface drainage, taking into consideration more severe rainfall events.	Planned (funded)		Wellington Water



Te whanake i ngā wāhi ōhanga Cultivate well-connected economic precincts

Action	Action Description	Status	Lead Agency/team	
			Council	Other Agency
1. Work with NZ Transport Agency Waka Kotahi on the Cross Valley Link and Petone to Grenada projects	Better connections to the regional road network are essential to support our economy. HCC will assist NZTA as lead agency in charge of the Roads of National Significance.	Funded by HCC and NZTA	HCC	NZTA

Next steps

5 February to 4 April 2025

Community engagement <https://haveyoursay.huttcity.govt.nz/sustainable-growth-strategy-2025-2055>

April 2025 – Councillors briefing

Summary of feedback received, and changes recommended

May 2025 – District Plan Review Committee / Council

Adoption of the final Strategy



Questions?
