



Cr Quentin Duthie

**Regional Councillor
update**

Wainuiomata CB

Aug 2025



Metlink Public Transport

- Bike racks back
- 160/170 = 600,000 boardings YE June
- 4.5M HVL train, 6% down, disruption
- Wood/Parenga shelter!
- Waterloo design



Wainuiomata news

New bus shelter for Wood Street

By Frank Neill

A new bus shelter will be built in Wood Street, close to one erected by a local resident in 2023, Wellington Regional Councillor Quentin Duthie announced at the 16 April meeting of the Wainuiomata Community Board.

"You might remember the story of the bus shelter that was built on the corner of Wood Street and Parenga Street," Cr Duthie said. "It was a good idea.

"There is one coming soon," Cr Duthie said.

"It is currently awaiting sign off from the council's transport team. "It has not been forgotten. Fingers crossed (it will be built) before winter."

Creating a new bus stop in the location "has been a difficult one," Cr Duthie said.

After the plan was announced a local landowner objected, and Metlink then had to go through a process where they worked towards negotiating an agreement.

"We have reached a point ... where there is agreement to allow the shelter from an adjacent landowner.

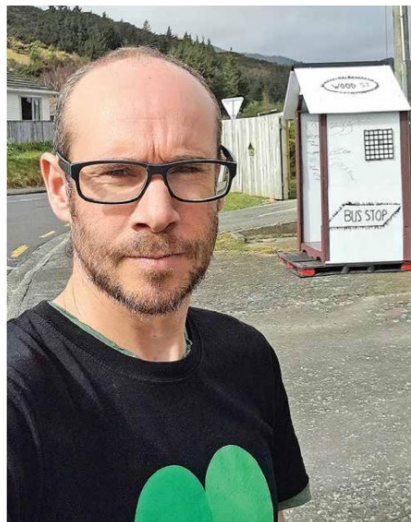
"It won't necessarily be in the perfect position, because of the agreement reached," Cr Duthie said.

In August 2023 a Wood Street resident, who has asked the "Wainuiomata News" not to name her in the paper, erected a home made shelter outside 104 Wood Street.

It was constructed from old election signs that MP Chris Bishop had put up during previous election campaigns.

It was taken down later in 2023.

Its builder was one of a number of local residents who had been asking Metlink and Greater Wellington Regional Council for a bus shelter at this stop for years.



Free Ride created an event.
11 Aug · 🌐

Free Fix Up!



This Saturday at 10:00

Free Fix Up - Wainuiomata

Wainuiomata Neighbourhood Hub

☆ Interested

Option 5



Option 5 is defined by the following key configuration elements that differentiate it from other options:

- Platform: Aligned and upgraded platforms, with Platform 2 repositioned to align with Platform 1, while maintaining the required 5m clearance from the Water Treatment Plant.
- Cross-corridor Access: underpass remove, new overpass providing access Oxford Terrace to Cambridge Terrace, pedestrian crossing from Cambridge Terrace to Trafalgar Square, for both commuters and the wider community.
- Vertical Circulation: 2 sets of new enclosed sheltered entries with compliant stairs and lifts for accessibility.

● Parks: pest control, Baring Head

Restored historic cottage about to open

By Frank Neill

A newly restored lighthouse keeper's cottage at Baring Head/ Ōrua-pouanui will soon be open for people to stay.

There are two lighthouse keeper's cottages on the Wainuiomata coastline and the first one was officially opened on 14 December 2023.

The second one will be open for bookings on Monday 18 August and following that the two cottages will be open for people to stay.

For larger groups both cottages, with a combined 12 beds, can be booked. Between the two cottages is the former generator building, which has been restored as a comprehensive storytelling hub

Regional councillor Quentin Duthie recently stayed at the newly refurbished lighthouse keeper's cottage to check that it is all ready for public booking.

"It's a gem," Cr Duthie says.

It is "comfortable, warm and nostalgic late-1960s decor.

"It's hard not to have an enjoyable stay.

"The highlight is the wild location – windy, dry, either hot or cold."

It is remote and quiet, yet only a 30 minute drive from the Wainuiomata shops.

"I arrived in calm sunny conditions, perfect for a bike ride and star-gaze," Cr Duthie says.

"By morning a strong southerly brought wailing winds, crashing waves, dramatic views.

"It's a tribute to the power of partnership and mahi tahi, involving Greater Wellington, mana whenua, Friends of Baring Head and the estate of the late John Nankervis."

Greater Wellington Regional Council was able to buy the land where the lighthouse keepers' cottages stand thanks to a million dollar donation from the estate of John Nankervis.

John, who died in 2022 after a stroke, left his estate to a series of conservation projects.

This included the donation that allowed Greater Wellington Regional Council to buy the Gollins Valley Station. The cottages are part of a complex that includes Aotearoa New Zealand's first fully-electric lighthouse, built in 1935.

The complex was added to the New Zealand Heritage list in 2023 as having "outstanding historical significance". The late Colin Ryder, who passed away in 2021, was a driving force in arguing to protect the cottages and secured \$400,000 in funding for the restoration.

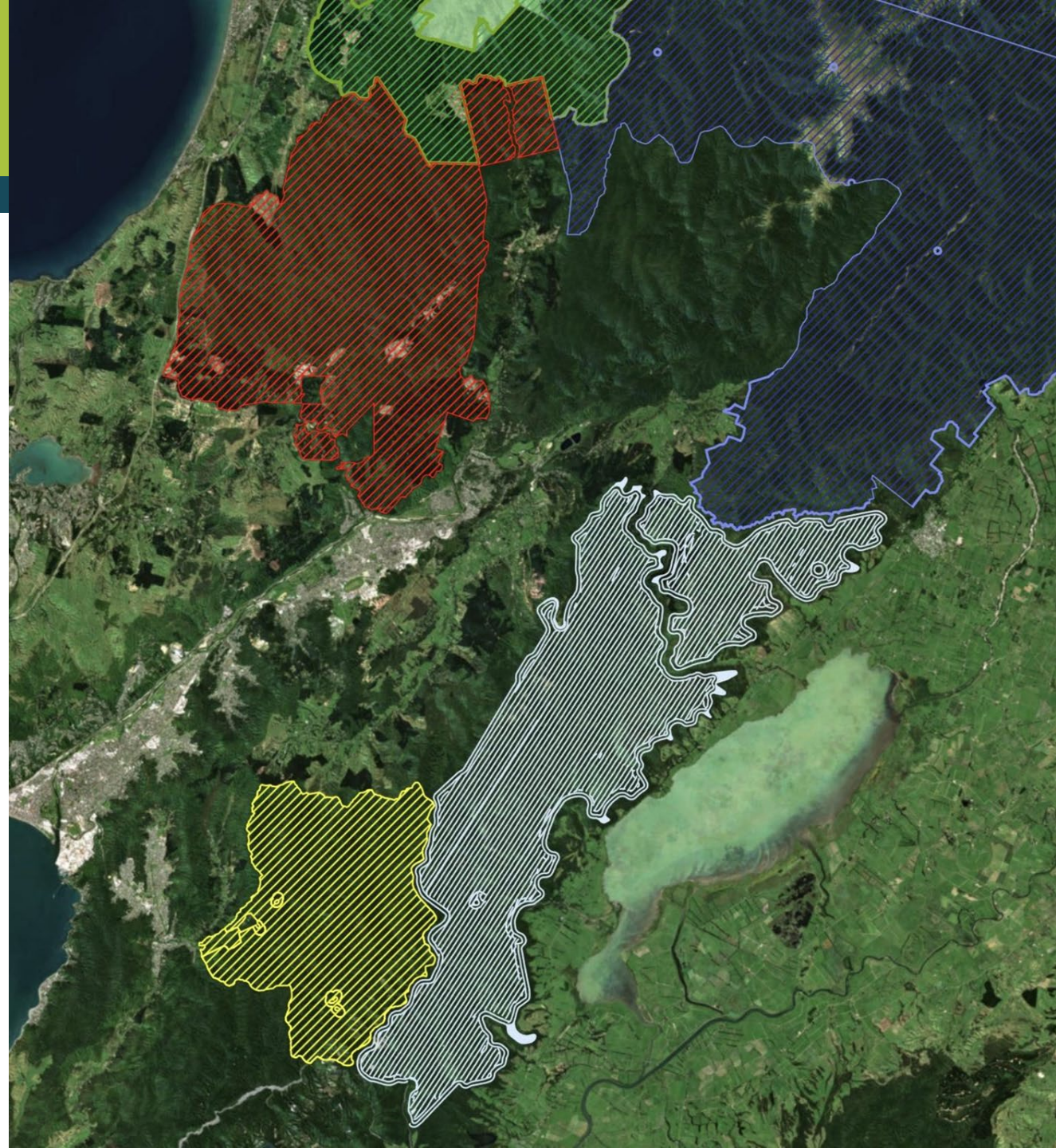
He led the campaign to have the Baring Head land bought and protected in 2010. The Friends of Baring Head continue to champion the protection of the park and lighthouse complex, and provided funding and volunteer work to make the restoration possible. More information and a link to the booking site is available at <https://www.gw.govt.nz/parks/east-harbour-regional-park/>. Bookings can be made on AirB&B.



Hutt-based Regional Councillor Quentin Duthie at the newly restored lighthouse keeper's cottage at Baring Head/Ōrua-pouanui. Photo: Supplied.



The lounge in the lighthouse keeper's cottage that will open for bookings on 18 August. Photo: Supplied.





**Thank you for
your support this
triennium**

**Me 021-337-262
GW 0800-496-734**

