

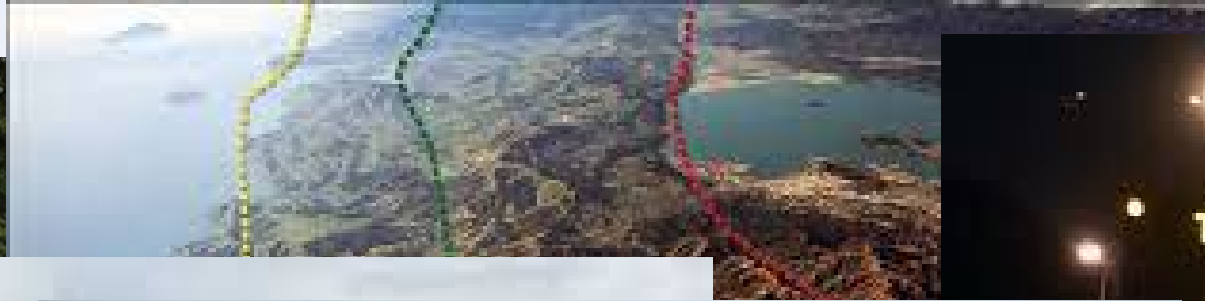
Community Response in Emergencies



Wellington Region Emergency Management Office (WREMO)

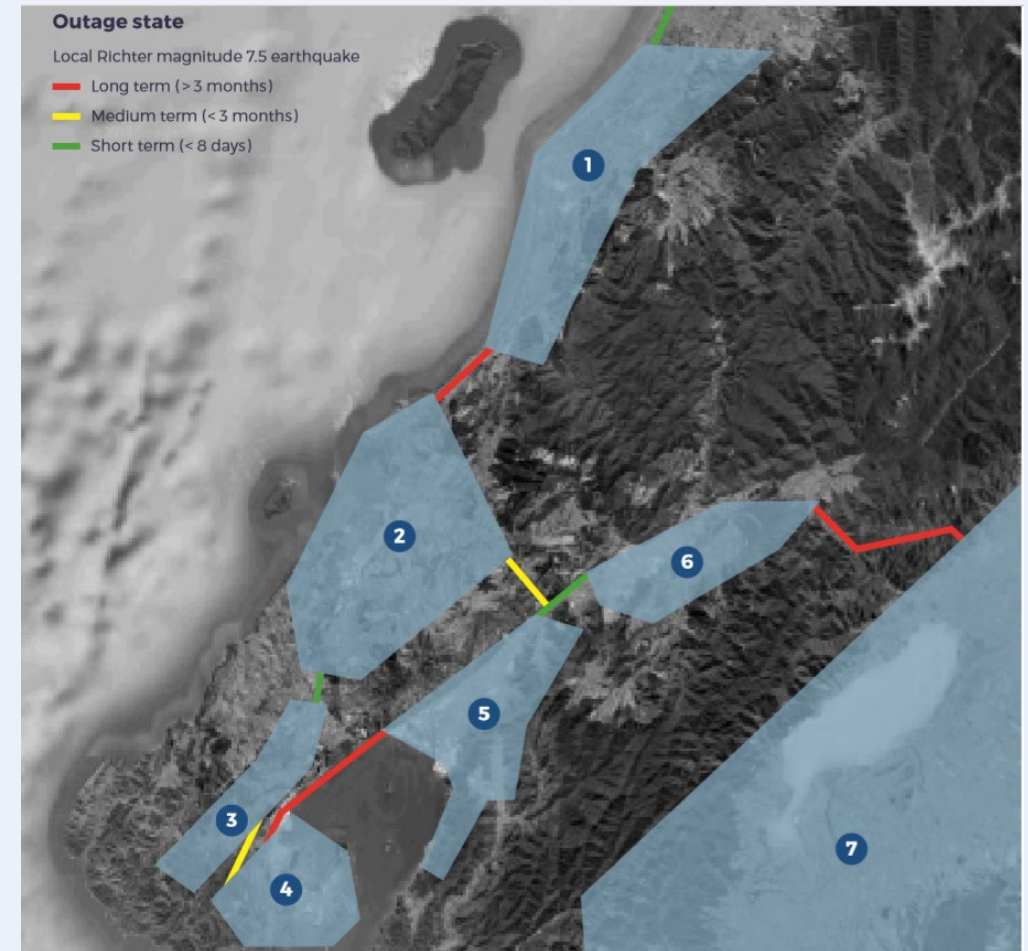
- Formed in 2012 (post Christchurch EQ)
- 31 staff across the entire region (GWRC boundary)
- 3 teams (CRR, ORR & B&D)

Hazards



Impacts

- Pockets of isolation
- Disruption to businesses & schools
- Displaced people
- Lifeline Utility failure



Civil Defence..



But what also happens in an emergency...



Chch EQ - 2011



Rena Oil Spill - 2011



Nelson Fires - 2019



COVID-19 - 2020



Mexico EQ 2017



Cyclone Debbie 2017



Nepal EQ 2015



Hurricane Harvey 2017





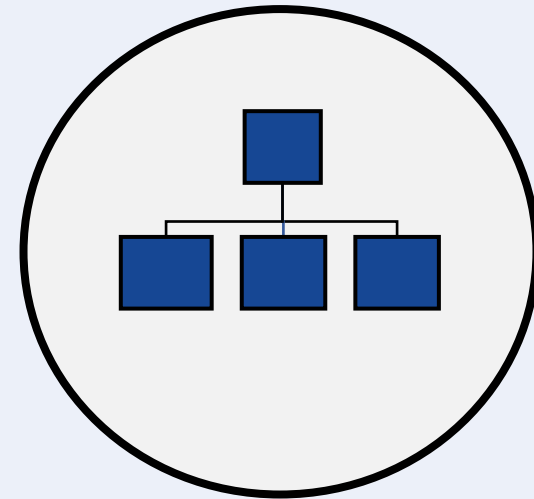
Knowing this we changed the model...

- Reimagined the system based on what people actually do not what we wish they would do!!

Emergency Response

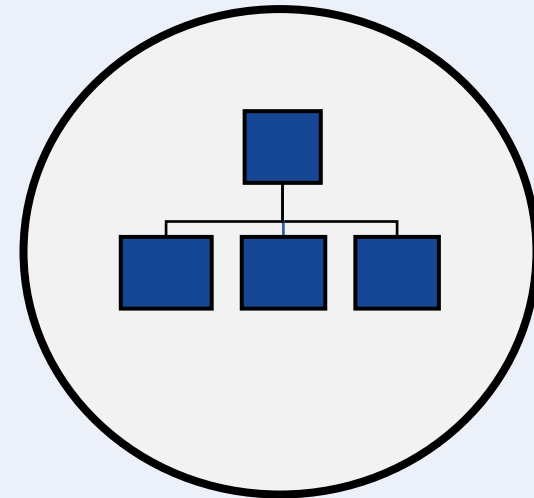


Community
Response

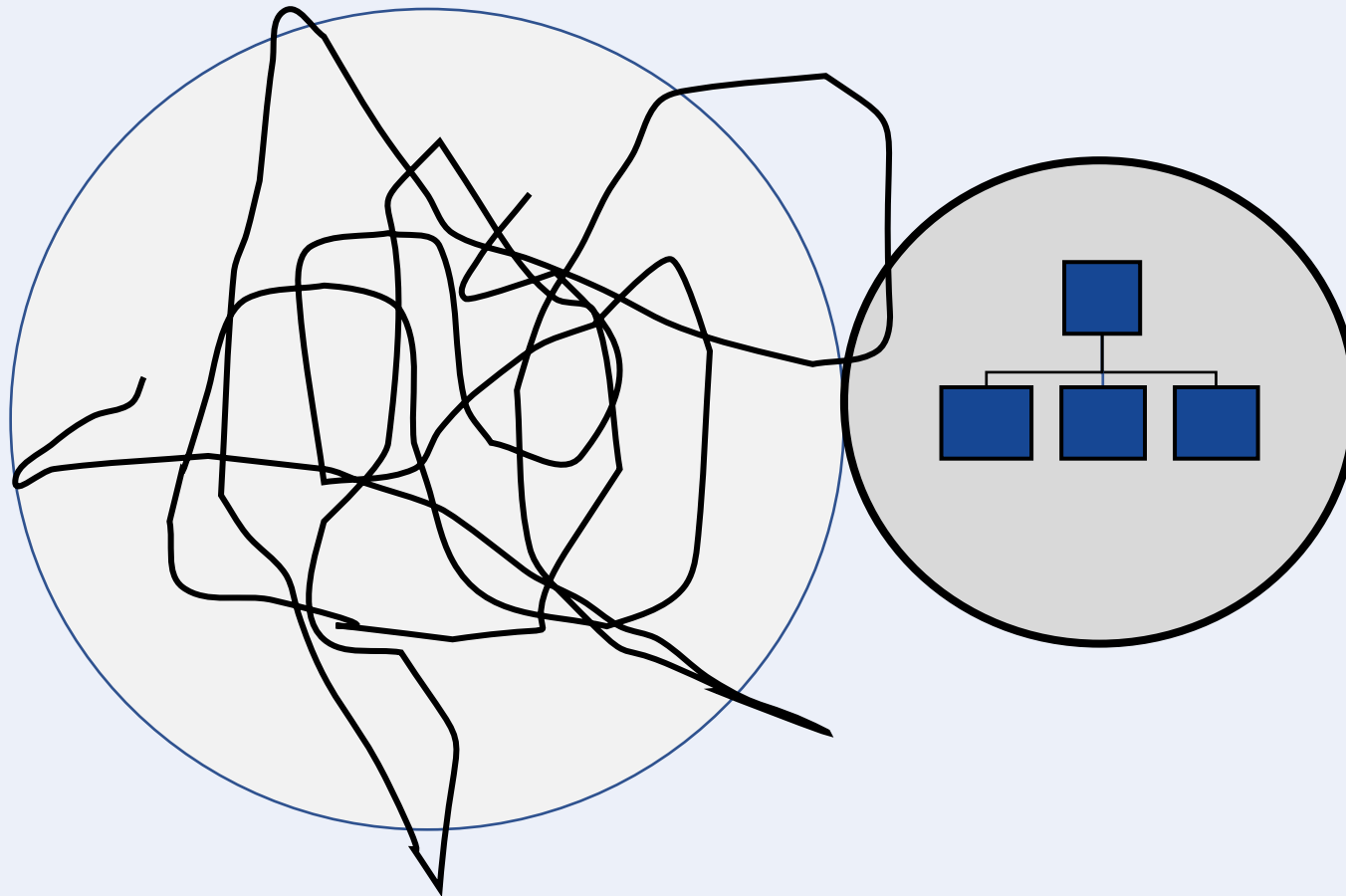


Official
Response

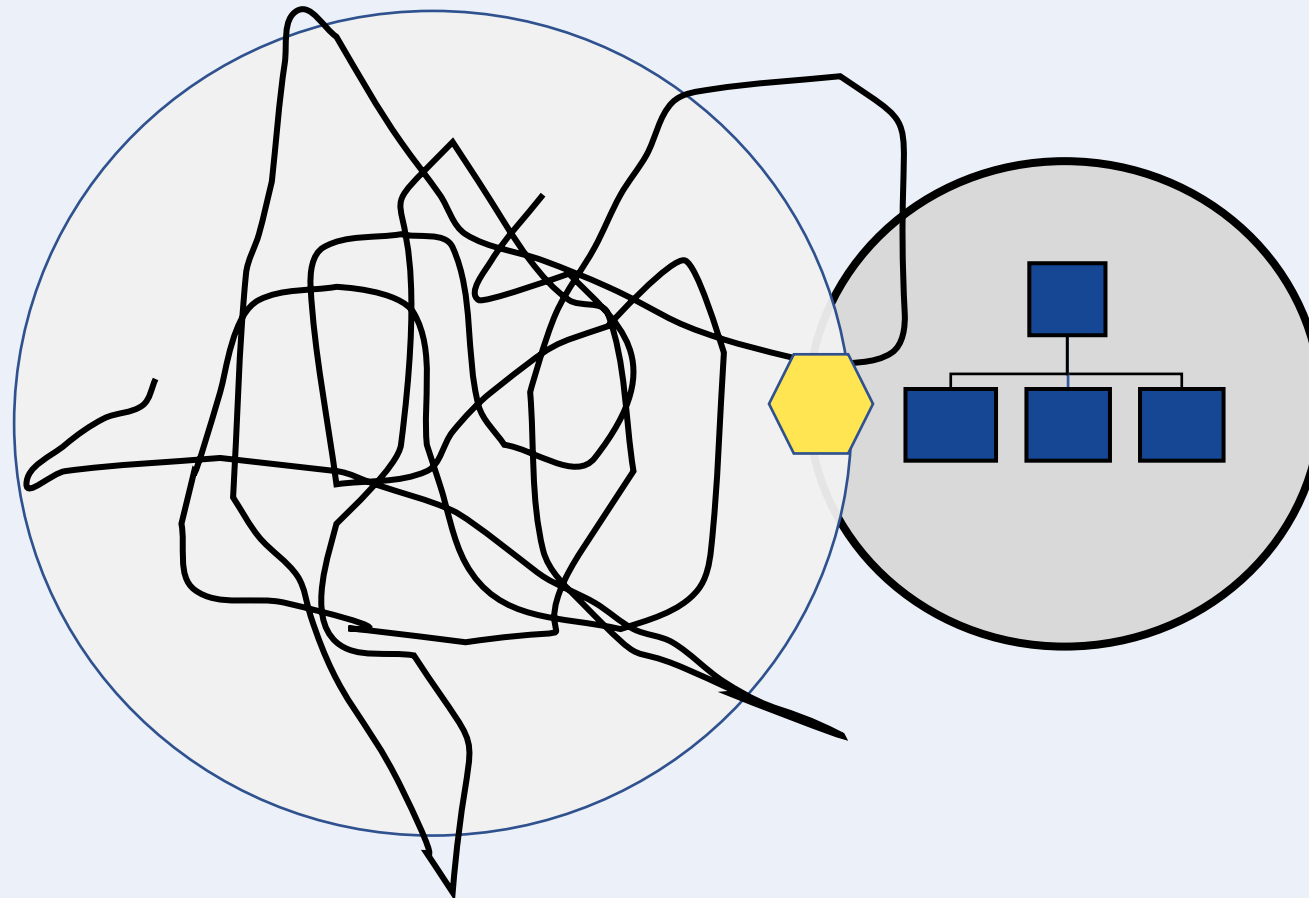
Emergency Response



Emergency Response



Emergency Response





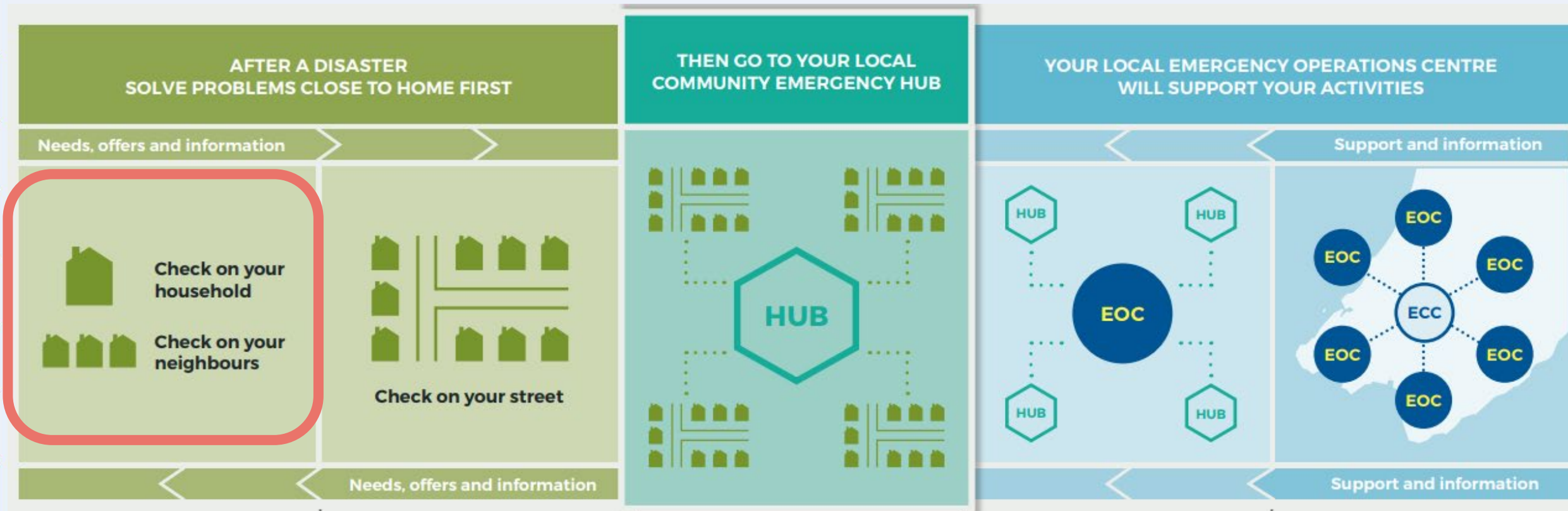
A place for our community to gather and help each other during an emergency

Download your local plan today
www.getprepared.org.nz/hubs



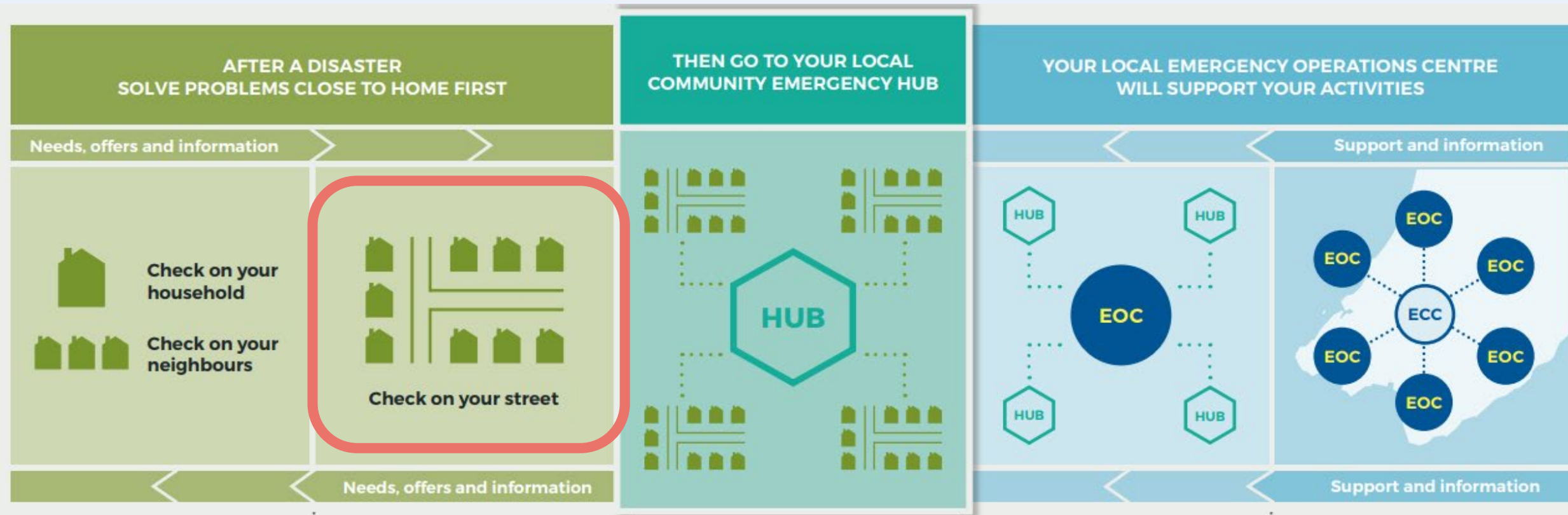
Integrated Emergency Management System

Better enables and supports the community-led response



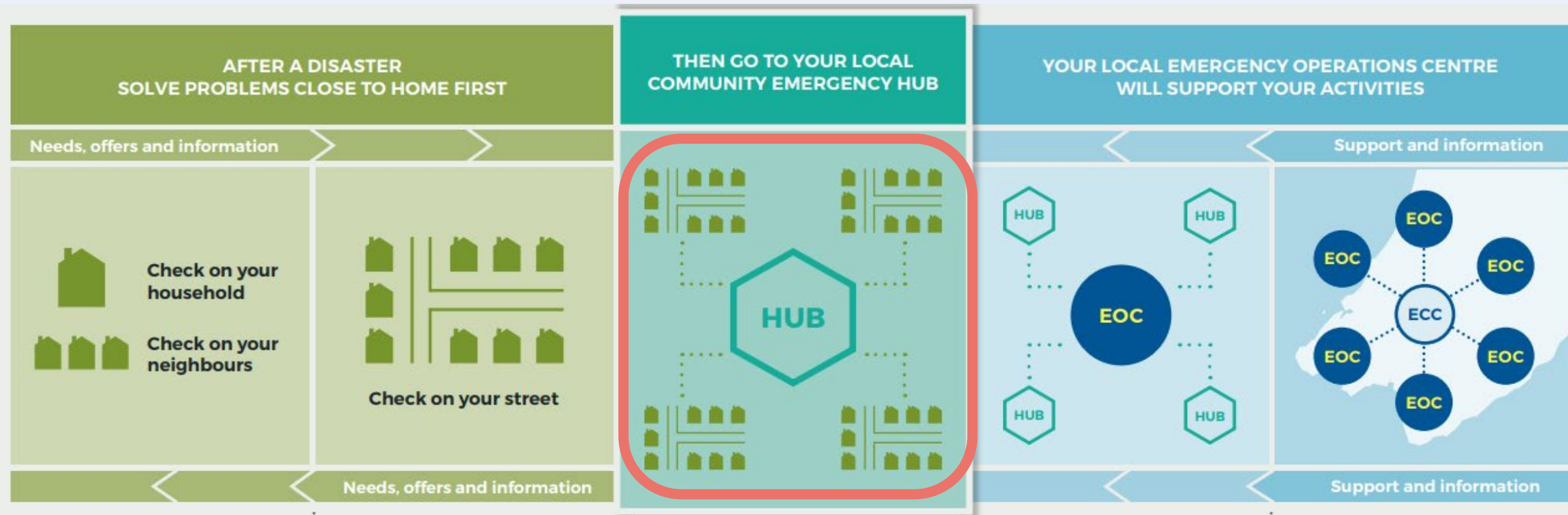
Integrated Emergency Management System

Better enables and supports the community-led response



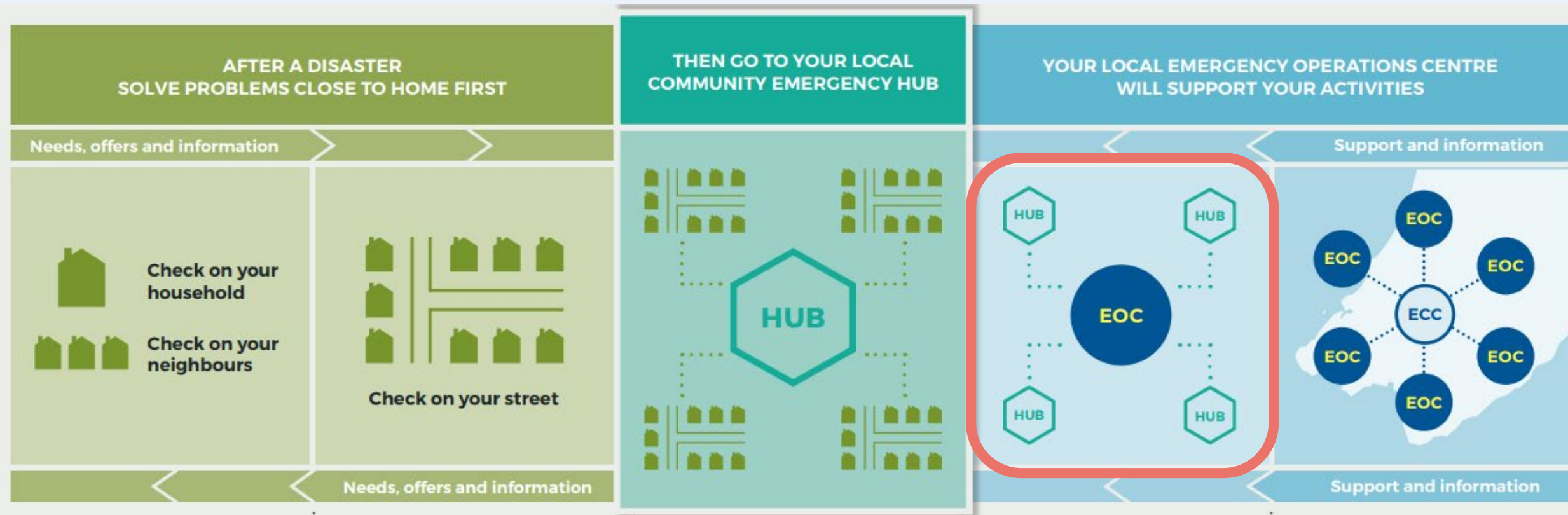
Integrated Emergency Management System

Better enables and supports the community-led response



Integrated Emergency Management System

Better enables and supports the community-led response

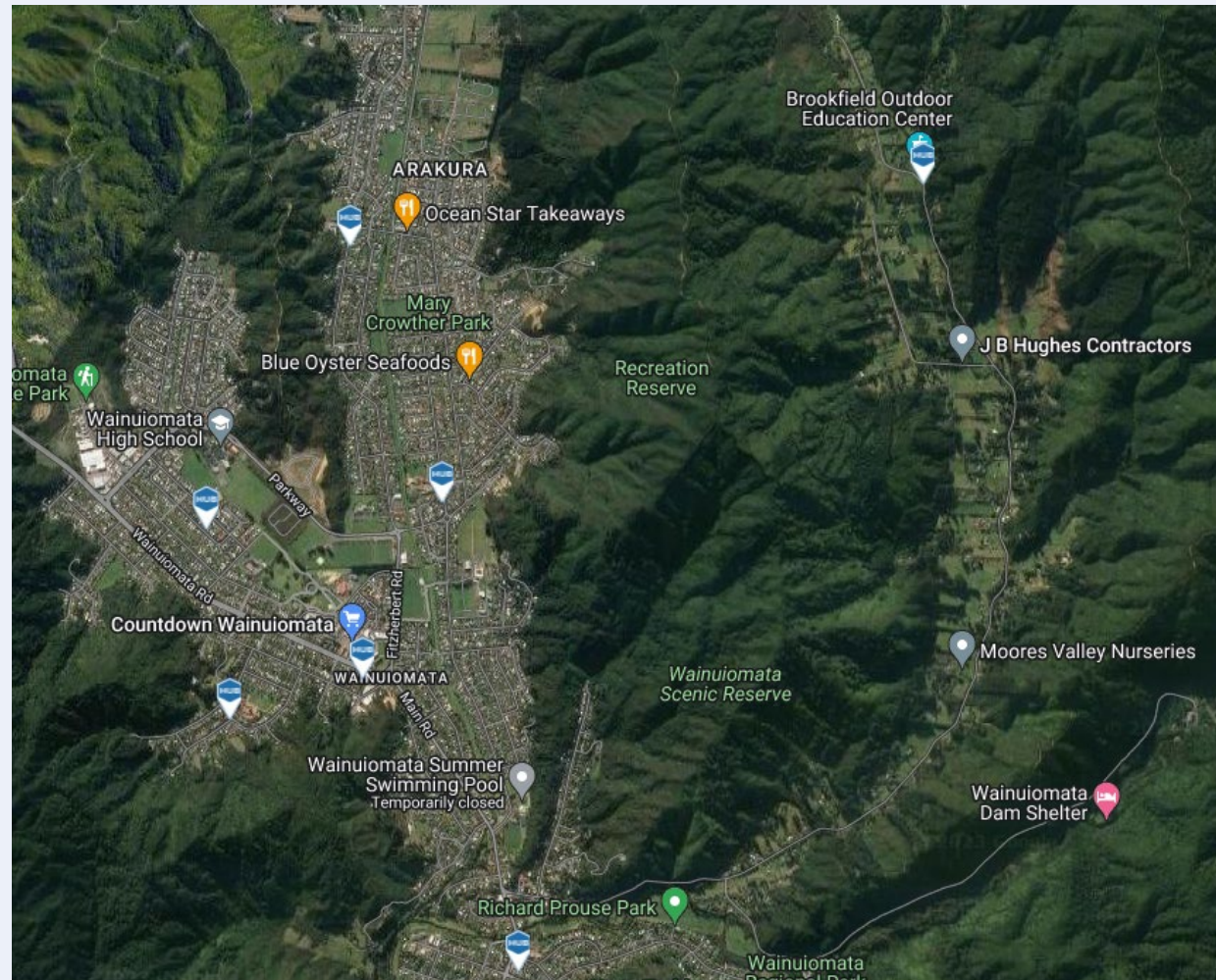


Integrated Emergency Management System


Better enables and supports the community-led response



Community Emergency Hubs in Wainuiomata







**How would you
solve these five
challenges
without any
official
government
support?**

- 1. Rescue**
- 2. Medical**
- 3. Shelter**
- 4. Water**
- 5. Food**

Local resources

During Community Response Planning, it is useful for various purposes during an emergency for solutions to community needs. Local resources can communicate with your neighbouring communities. Check with the owner to coordinate the use of resources.

Coordinate with neighbouring Community Emergency Hubs

- **Mount Cook School**, Tory Street Mt Cook
- **Clifton Terrace School**, Clifton Tce, Te Aro
- **Kelburn Normal School**, Kelburn Rd, Kelburn
- **Booklyn School**, Washington Ave, Brooklyn

Groups and networks of people

- › Still Waters Community Group
- › Aro Valley Community Centre Committee
- › Users of the Aro Valley Community Centre
- › Te Aro School Committees
- › Aro Valley Preschool Committees
- › Aro Parents Network
- › Lynchgate Funeral Home staff
- › Polhill Restoration Group
- › Tanera Gully Restoration Group
- › Kai o Te Aro volunteers
- › Mountain Biking Community
- › Stillwaters Community Group
- › Student Association members

Local vulnerabilities

During Community Response Planning the following potential vulnerabilities were identified. These may need further attention or assistance.

Places and spaces

- › Houses and property on hillsides
- › Houses and property in flood prone areas
- › Social housing facilities
- › Hotels and other accommodation facilities
- › Earthquake prone buildings
- › Te Aro School, The Terrace
- › The School of Practical Philosophy, Aro St
- › Parks and streams

Groups and networks of people

- › Aro Valley Preschool children
- › Te Aro School students
- › University students
- › International Students
- › New migrant families
- › Homeless community
- › People with mental health concerns
- › Argo Trust residents
- › Social housing residents
- › Elderly people
- › People with disabilities
- › Uncollected children
- › Argo Trust residents
- › Stressed & lost pets
- › People who are house bound
- › Mothers with young babies

Water

Our community has access to water for drinking and water hygiene purposes.

- › Ensure everyone knows how to get drinking water.
- › Coordinate community efforts for drinking, cooking and hygiene.
- › Arrange a place in the community where water can be distributed.

Where can we find drinking water?

- › Home emergency water tanks
- › Home hot water tanks and heater tanks
- › Garage Project 6000L water tank and water purification facilities, Aro St
- › Water tank at Te Aro School, The Terrace
- › Water tanks on top of Aston Towers
- › George Denton Park Highbury water tank
- › Epuni St Stream
- › Waimapihi Stream
- › Rain and condensation
- › Shops, cafes, restaurants (bottled water)
- › Accommodation facilities

Where can we find water for hygiene?

- › Epuni St Stream
- › Waimapihi Stream (as close to Polhill as possible)
- › Buckets outside
- › Collect off roof (if no asbestos)
- › Toilet cisterns

What water supplies should be avoided or need treatment before drinking?

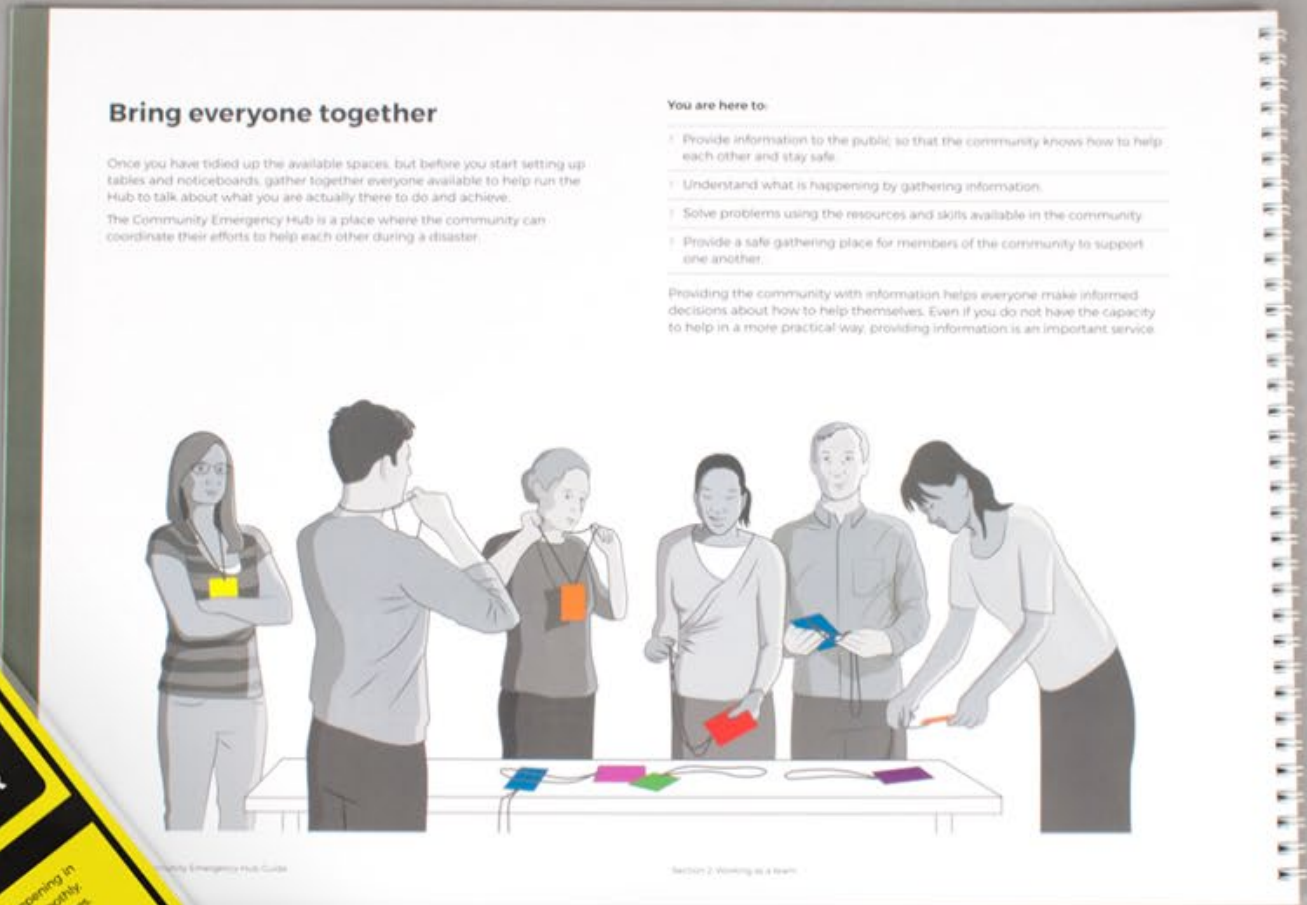
- › Any water from the streams
- › Water in older, standing tanks
- › Water collected off rooves

What places would be good distribution points?

- › Aro Valley Community Centre, Aro St
- › Aro Park, Aro St
- › Te Aro School carpark, The Terrace
- › Garage Project forecourt, Aro St
- › Housing Apartments
- › Aro Park
- › Polhill Reserve
- › Street corners

Each solution is unique to that community

- › Carry in bottles, containers, buckets
- › Cars, bikes, scooters, motorbikes
- › Supermarket trolleys, wheelbarrows, buggies, strollers, wheelie bins



We don't expect people to read this pre-event

Next steps for Community Emergency Hubs



**Online Hub
Reviews**



**Iwi and
Marae**

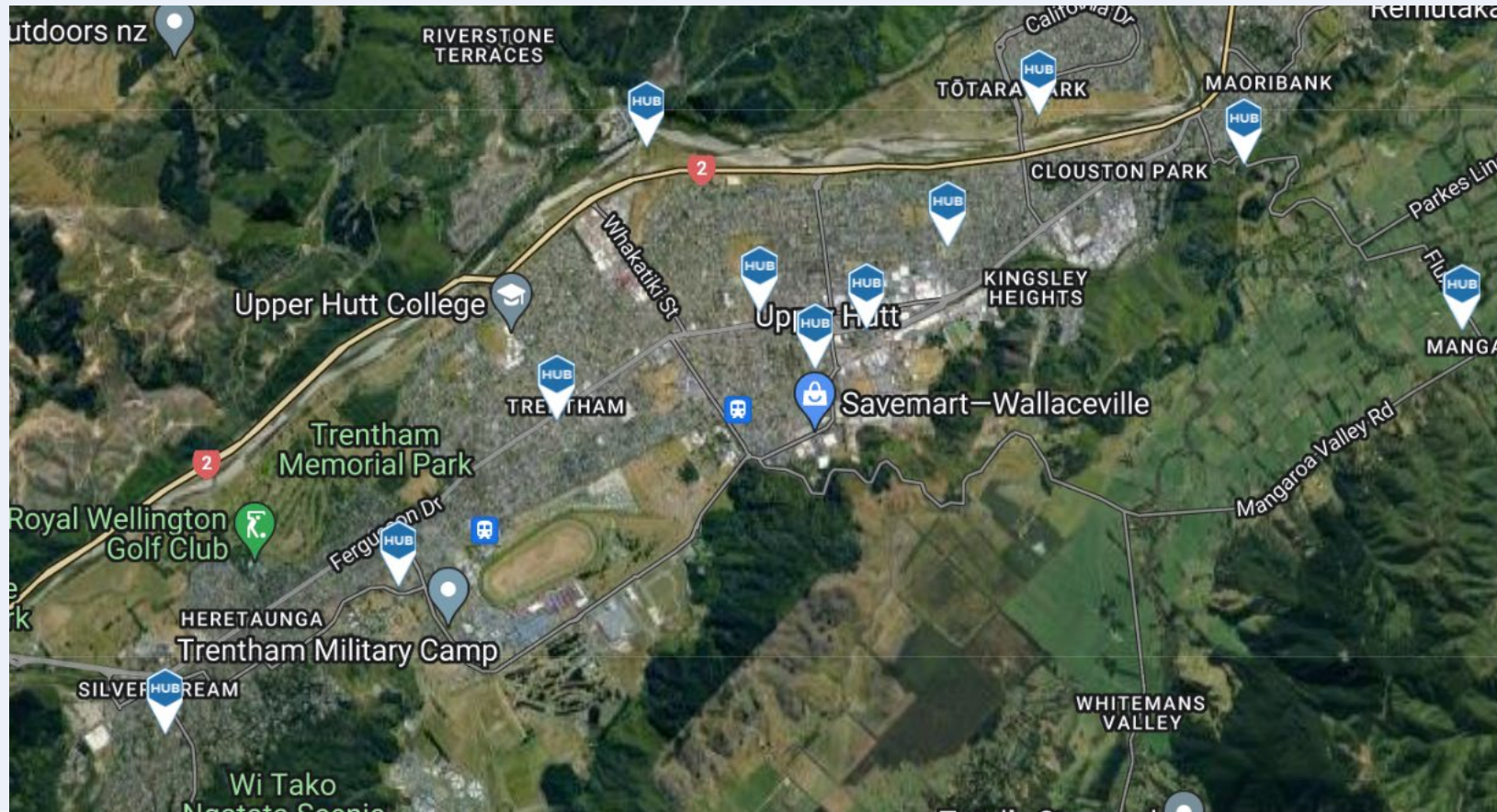


Comms in Hubs



**Hubs in
Exercises**

Reviewing Existing Hub Locations



Too many Hubs in some areas and some in the wrong locations

EVERYBODY HAS SOMETHING TO OFFER - WHAT'S YOUR ROLE?



Questions?