

Rautaki Whakatipu

Sustainable Growth Strategy 2025–2055

Wainuiomata Community Board – 12 February 2025

Overview of the Growth Strategy

- Growth planning involves looking at all the aspects of our city from housing and transport to water infrastructure, businesses, and community spaces. It also considers our natural environment, climate challenges, and cultural identity.
- Our **draft Sustainable Growth Strategy** is a long-term (30-year) document that is used to improve coordination between council's plans and strategies, regional frameworks and national direction.
- It brings together existing plans for transport, infrastructure, and open spaces, and aligns with the Long-Term Plan 2024-2034.
- We've had input from our Mana Whenua partners, central government agencies, Greater Wellington Regional Council and Metlink.
- The document itself is divided into four chapters.



Chapter 1

He whakatakinga Introduction

Introduces the purpose and strategic context of the Strategy.



National Policy Statement on Urban Development (NPS-UD)

Aims to make sure that New Zealand's towns and cities are well-functioning urban environments that meet the changing needs of our diverse communities.



Regional Future Development Strategy

A statutory document required under the NPS-UD, which sets out a long-term plan to ensure a 'well functioning' urban environment, showing where growth will be, in what form, and what infrastructure is needed to support that growth.



Sustainable Growth Strategy 2025-2055

Guides how we want our city to change over the next 30 years.

Intends to inform decision-making and investment decisions by Council, government and private sector.



Other Plans and Strategies

Various local and regional plans and strategies inform the Growth Strategy.

Lower Hutt Long Term Plan 2024-2034

Hutt City Council's priorities and projects for the next 10 years inform the Growth Strategy.

Tō tātou tāone i nāianeī rangi

Te Awa Kairangi ki Tai Lower Hutt Today

This chapter provides an overview of Lower Hutt and presents the challenges and opportunities our city faces as we grow and change over the next 30 years.



The key themes are:

- 1. Ngā hanganga**
Housing
- 2. Ngā waka**
Transport
- 3. Ngā puna wai**
Water Infrastructure
- 4. Pākihi me te ōhanga**
Business and Economy
- 5. Tuakiritanga**
Cultural Identity
- 6. Huringa āhuarangi me ngā mōrearea**
Changing Climate and Natural Hazards
- 7. Taiao me ngā whenua tāpui**
Open Space, Recreation and Environment
- 8. Pokapū hapori**
Community Facilities

Te anamata o tō tātou tāone

Te Awa Kairangi ki Tai Lower Hutt in 30 Years

This chapter sets out our direction for Te Awa Kairangi ki Tai Lower Hutt in 30 years, the outcomes we want to see delivered and the strategic moves we need to get there. It spells out our “sustainable growth strategy” for the city.



Long Term Plan

Purpose

A connected, resilient and inclusive city where everyone thrives

Principles

Livable city and vibrant neighbourhoods

Supporting and enhancing the environment

Being a future-fit city

Cultural recognition

Outcomes

- Urban growth in suitable areas
- Thriving local centres
- Affordable housing
- Transport options

- Compact urban footprint
- Mana Whenua as kaitiaki
- Healthy natural systems
- Resilient environment

- Zero-carbon city
- Targeted infrastructure upgrades
- Diverse business environment

- Mana Whenua history and identity
- Distinct neighbourhoods

Sustainable Growth Strategy

Strategic Moves



Enhance the heart of the city



Build up the central and northern Valley Floor



Grow with Te Awa Kairangi Hutt River



Foster prepared coastal and low-lying communities



Cultivate well-connected economic precincts



Support neighbourhoods outside the Valley Floor



Strengthen transport options



Create a greener and healthier city

Actions



9



11



3



15



5



6



9



19

Te ara whakamua Strategic Moves

The next section explains each strategic move, their rationale, what types of actions are recommended to give effect to them, and what their expected benefits are.



1

Enhance the heart of the city

Revitalise the central city to create a thriving neighbourhood and destination.



2

Build up the central and northern Valley Floor

Concentrate new housing in the central and northern Valley Floor.



3

Grow with Te Awa Kairangi Hutt River

Enhance resilience, recreation and biodiversity along the river.



4

Foster prepared coastal and low-lying communities

Recognise the risks of climate change and building community preparedness.



5

Cultivate well-connected economic precincts

Improve resilience of and access to employment areas.



6

Support neighbourhoods outside the Valley Floor

Sustain the access, character and services of neighbourhoods.



7

Strengthen transport options

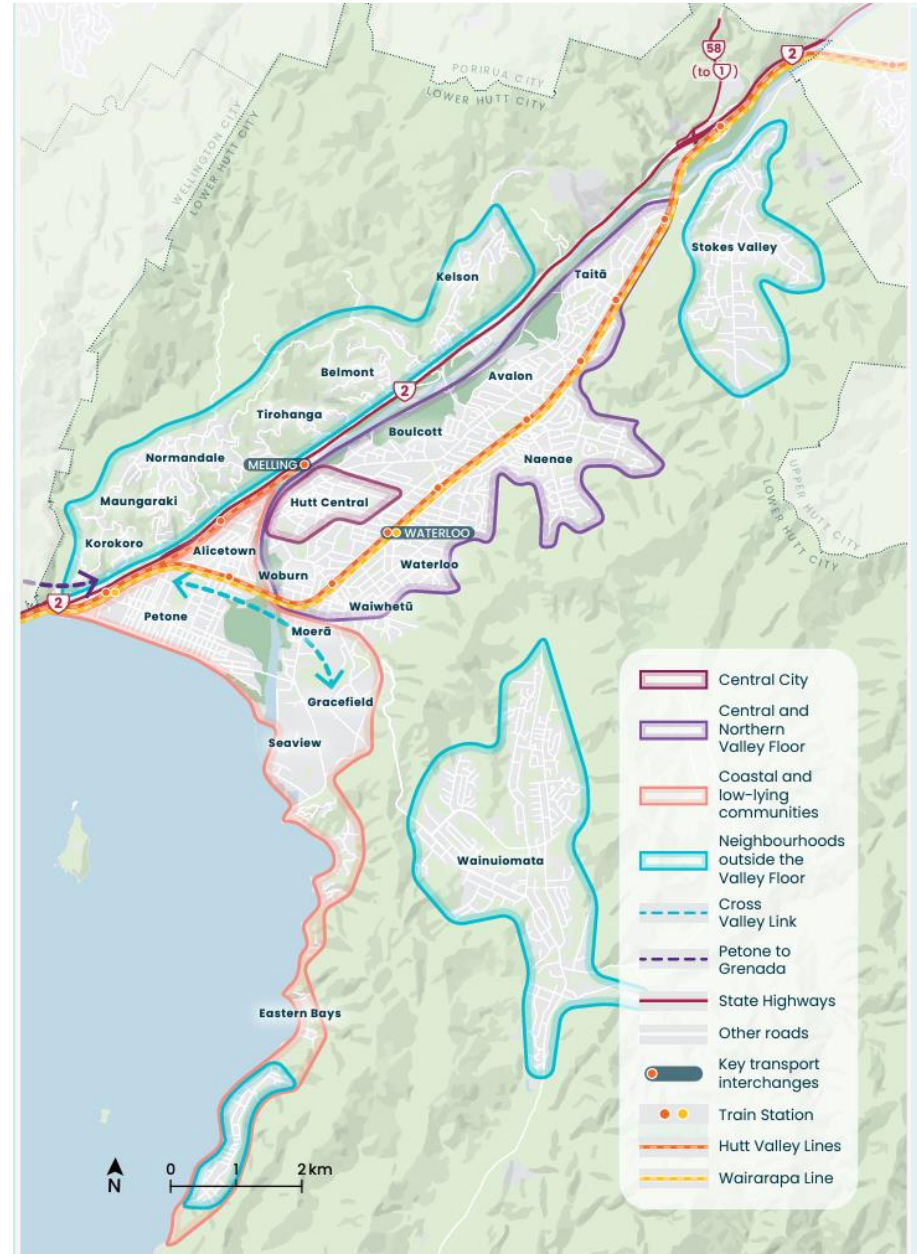
Provide a variety of transport options that make it easy to get to and around the city.



8

Create a greener and healthier city

Improve the health and wellbeing of the city and its ecosystems.



Ngā tukanga Action Plan

This chapter presents a list of actions to give effect to our strategic moves.



Whāngaihia te hunga noho ki ngā pari maunga

Support neighbourhoods outside the Valley Floor

Action	Action Description	Status	Lead Agency/team	
			Council	Other Agency
1. Upgrade the wastewater network outside the Valley Floor	This includes improvements to wastewater storage in Silverstream, Maungaraki and Wainuiomata (Fraser Street and Main Road)	Planned (funded)		Wellington Water
5. Improve Black Creek pedestrian track	Improve the pedestrian track along the stream to create better connections between North Wainuiomata and the local centre.	New initiative (partly funded)	Parks & Reserves	



Te whanake i te toiora o te taiao

Create a greener and healthier city

7. Regenerate Black Creek	Black Creek in Wainuiomata is part of the stormwater management network. The channel has been engineered over time and a regeneration of the stream could help improve the stormwater capacity and quality, in line with the Whitua Implementation Programme.	New initiative (unfunded)	Parks & Reserves	
----------------------------------	---	----------------------------------	-----------------------------	--



Next steps

5 February to 4 April 2025

Community engagement <https://haveyoursay.huttcity.govt.nz/sustainable-growth-strategy-2025-2055>

April 2025 – Councillors briefing

Summary of feedback received, and changes recommended

May 2025 – District Plan Review Committee / Council

Adoption of the final Strategy



Questions?
