



Cr Quentin Duthie

**Regional Councillor
update**

Wainuiomata

Board, October

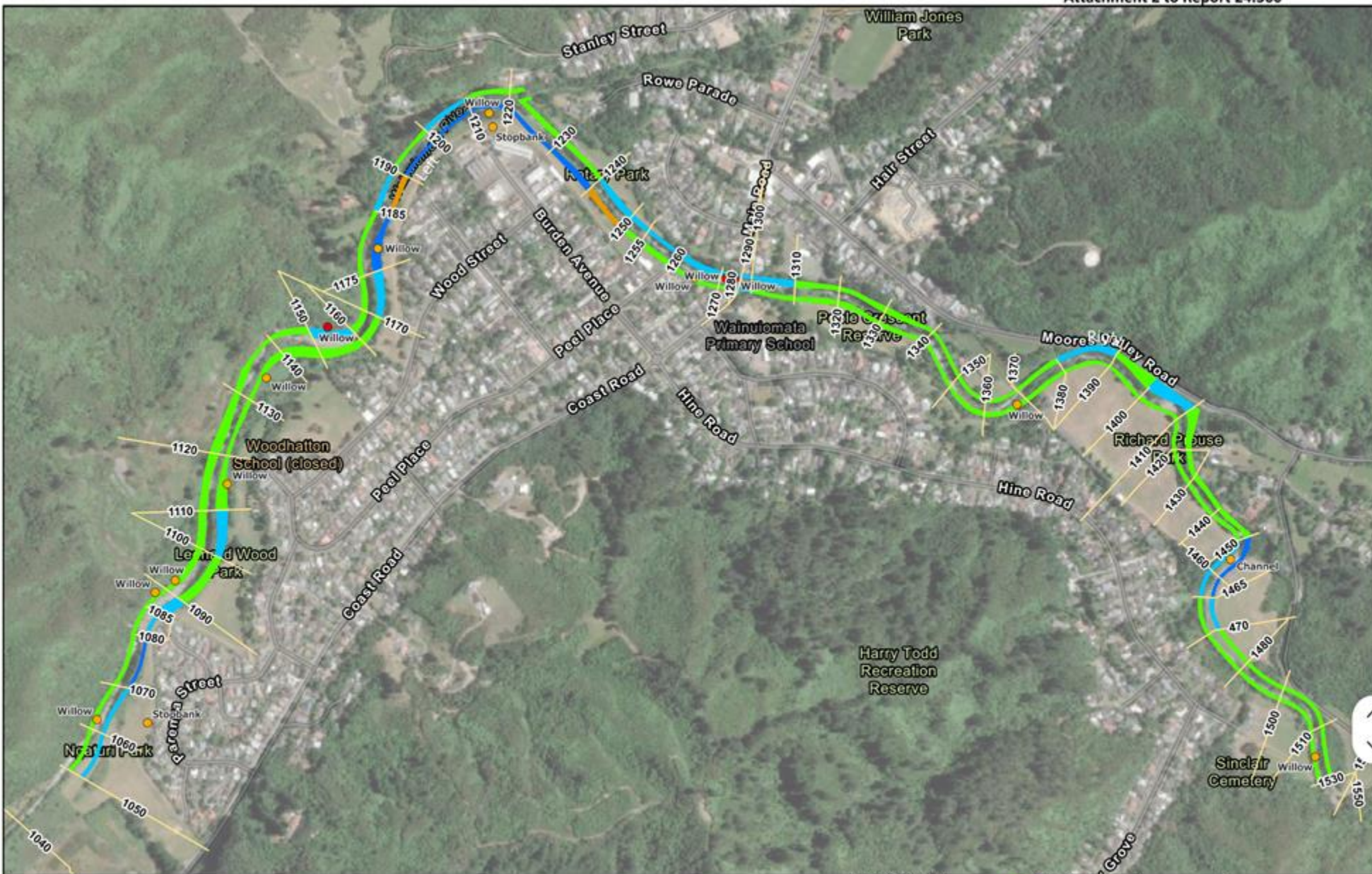
2024

Environment and Water

- Reminder: Env Hotline 0800 496 734
- Summer fire risk in Parks
- Te Awakairangi Subcommittee met yesterday
 - Great paper on Wainuiomata water quality and flood risk



Figure 2 - Flooding in the 2024(L) and 1985 (R) events



Greater Wellington
Te Pane Matua Taiao

Wainuiomata APT Map
2024 Asset Performance Tool Risk Assessment

Legend

- Asset Condition Rating
 - Poor Condition (13)
 - Very Poor Condition (3)
- Risk Classification
 - Very High (2)
 - High (2)
 - Medium (6)
 - Low (24)
 - Very Low (65)

Project Name:	APT
Author:	TurnerL
Date of Issue:	12/09/2024 11:22 am
Scale at A4:	1:9,000

Esri Community Maps Contributors, LINZ, Stats NZ, Esri, TomTom, Garmin, Foursquare, METI/NASA, USGS, Maxar

Path: C:\GIS\APT\APT.aprx





Metlink Public Transport

- Buses reliable, patronage growing; Trains not so great
- Public transport investments not funded by Government
 - Bus priority, Waterloo & Woburn stations
- Regional Public Transport Plan delayed to next year
- Transport Committee meets this Thursday





Questions? Ideas?

Call anytime

021337262

Regional Leadership and Representation

- Maori Ward affirmed
- Representation Review

