



Cr Quentin Duthie




**Regional Councillor
update**

Wainuiomata Board

June 2025



Metlink Public Transport

- Fare rise 1 July - 2.2% + off-peak discount reduced from 50% to 30%
 - Wise to Qgate peak \$3.32  \$3.39
 - Wise to Qgate off-peak \$1.66  \$2.37
 - Bus+train commute to Wellington (return, peak) \$16.58  \$16.95
- Shelter at Wood/Parenga - awaiting HCC sign off, then installation



BETTER WAINUIOMATA BUSES

We want to hear **your** views and ideas on improving our public transport options

Hosted by GWRC and HCC councillors and Community Board members

**7:30PM THURS 20 MARCH
AT WAINUIOMATA HUB**

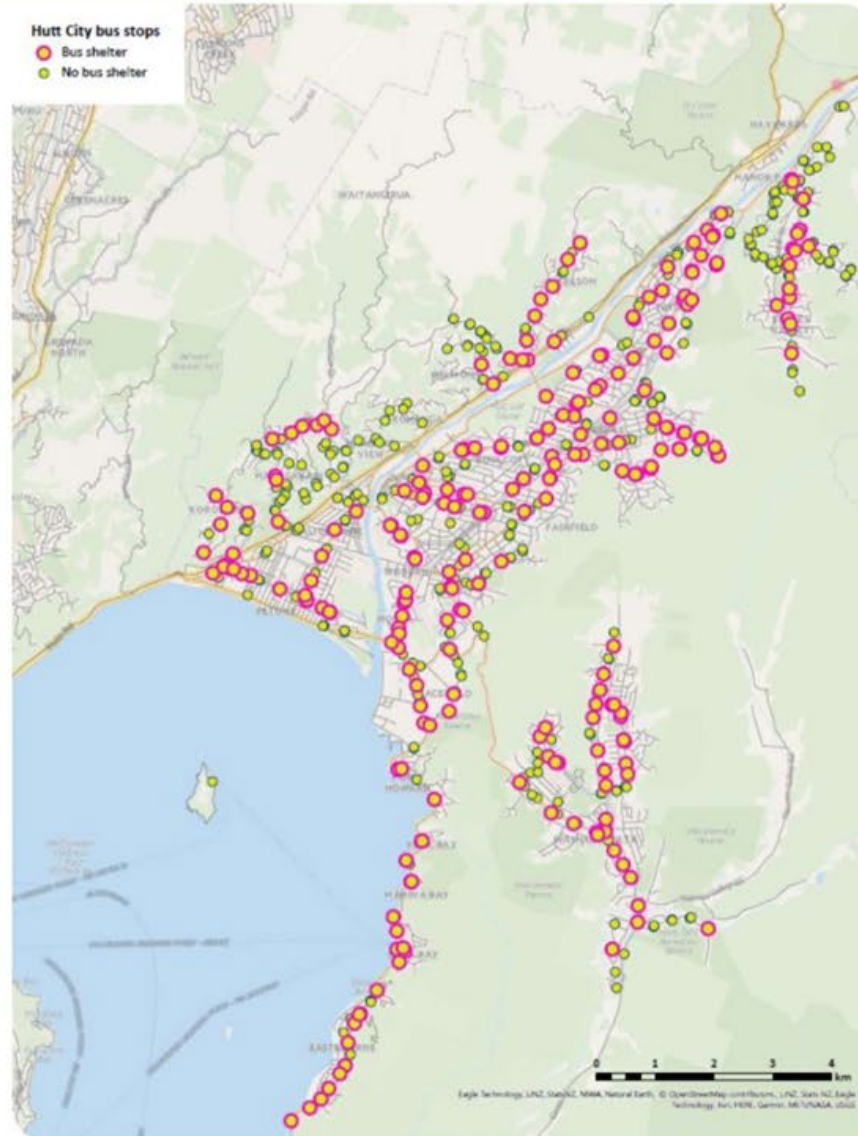


Submissions on the Regional Public Transport Plan can be made at haveyoursay.gw.govt.nz

CURRENT BUS SHELTER LOCATIONS

Stop Category	Total Stops	With Shelter	Without Shelter
1	2	2	
2	15	14	1
3	179	134	45
4	205	88	117
5	245	23	222
	646	261	385

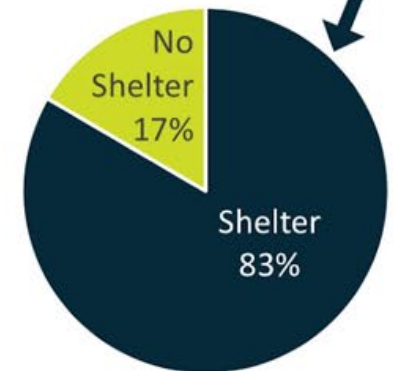
We are working towards ensuring all **Category 3 or higher** bus stops have shelters or covered areas available.



Percentage of stops with shelters / covers



Patronage at bus stops





Bus shelters in Wainuiomata

- Renewals: \$1m = 35-40 p.a., Metlink/NZTA
- New: \$0.25 CAPEX = 8-10 p.a., NZTA declined to fund
- Allows 10 renewals or new installs p.a. in Hutt

Year	Stop	Stop Name	Renewal/ New
22-23	9981	Wise Street at Thirlmere Street	Renewal
22-23	9916	Wood Street (near 56)	Renewal
24-25	8909	Main Road at Stanley Street	Renewal
24-25	8901	Wainuiomata Road at Parkway (near 189)	Renewal
25-26	9985	Fitzherbert Road at Shopping Centre	Renewal
25-26	9915	Wood Street at Parenga Street	New



RPTP recommendations

- 9 Recommends that Metlink pursues improvements to public transport bus services in the following areas, subject to available funding, and that these improvements are included in the final RPTP for adoption by Council:
 - a Wainuiomata – increased frequency of services and better connections to Hutt Hospital – in advance of a review of the wider Hutt City network in 2026
- 14 Recommends that a new focus area is included in the RPTP relating to “connections protection”, in particular:
 - a bus to bus and
 - b bus to rail
 - c better shelter, better connections, bus waiting for train.

🦇 Puketahā and water collection area





Gums loop track and fairy garden





Pest culling operations 24/25

Wainui-Orongorongo water collection:

40 goats, 38 pigs, 41 deer

Wainuiomata Mainland island:

1 goat 49 pigs 3 deer

East harbour Northern forest:

10 goats 1 pig 10 deer

HCC eastern hills (HCC land):

0 goats 52 deer 3 pigs



💡 Ōrua-pouanui/Baring Head - Pō mārie





Cr Quentin Duthie

021 337 262

GW Hotline

0800 496 734