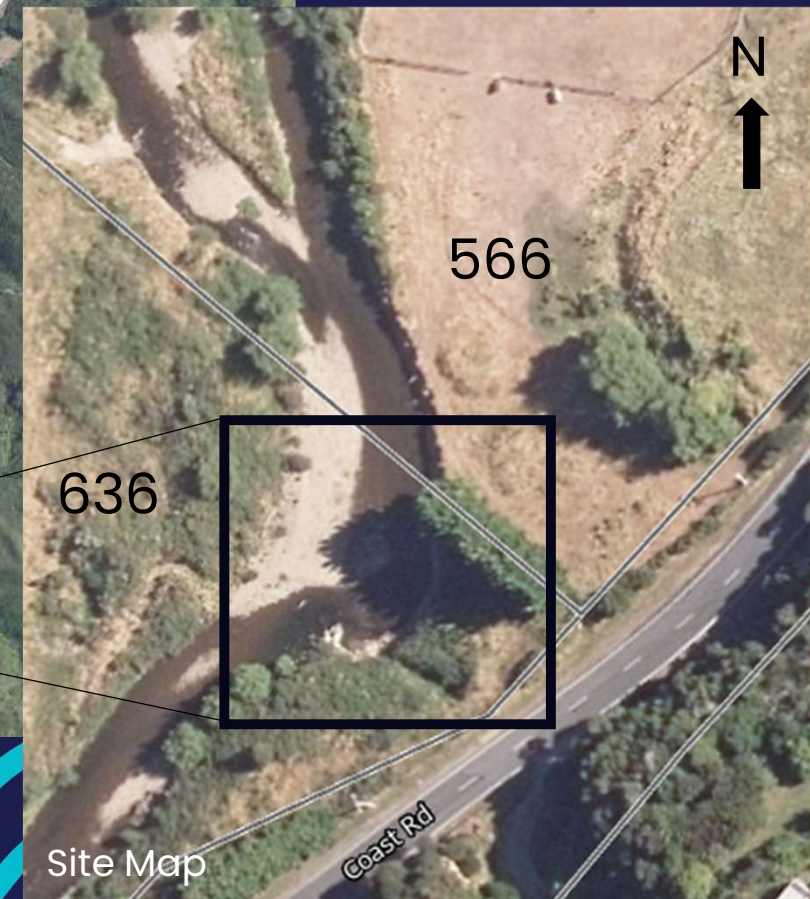
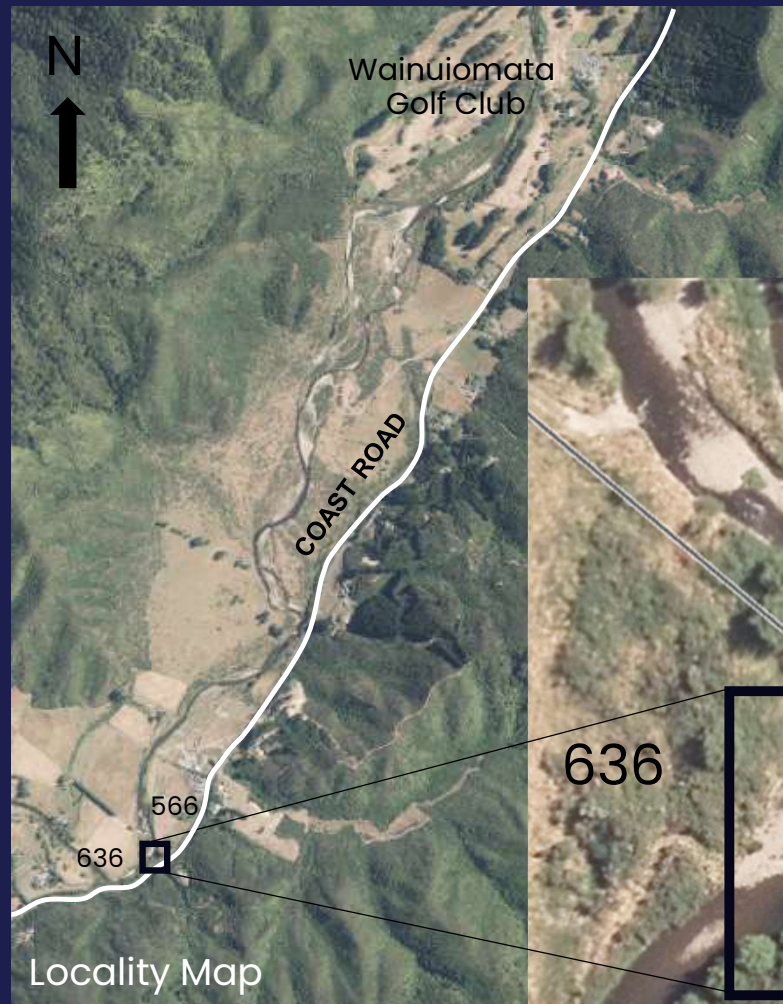


Coast Road River Erosion Mitigation Works

- Approximately 2.5km south of the WGC entrance
- River Berm Excavation
- Retaining Wall Construction

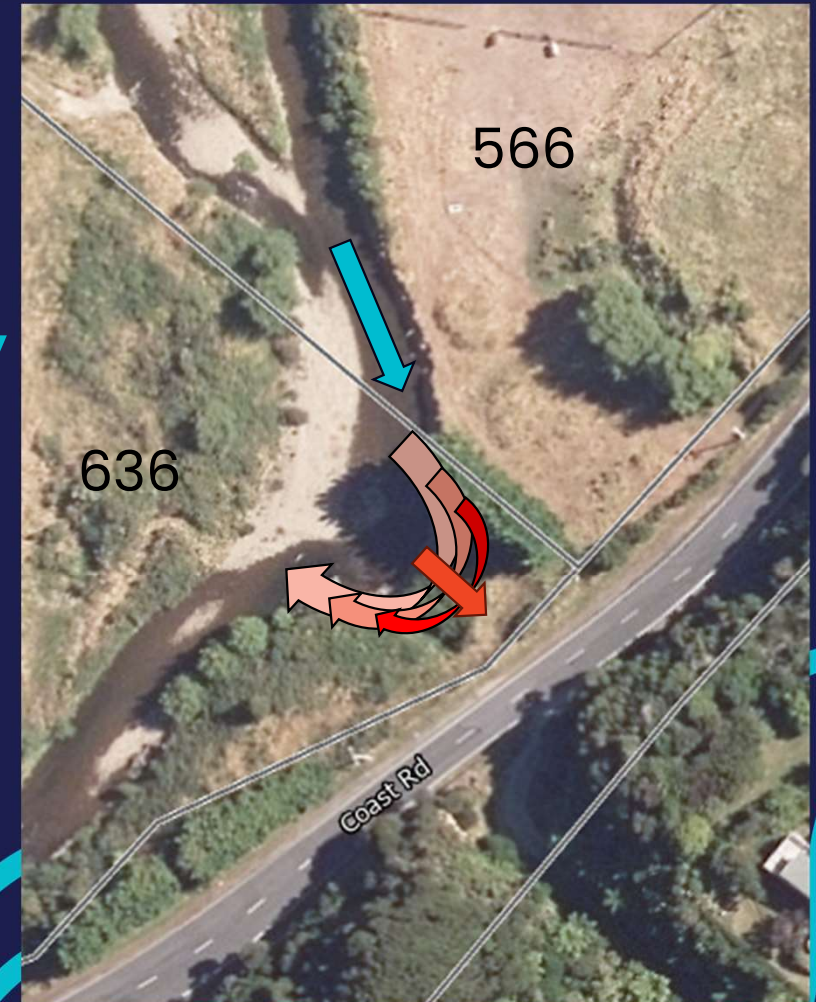
8/4/2022



Issue:

Wainuiomata River erosion is progressively migrating toward Coast Road

Threatens the integrity of the Road and access for Residents and Visitors



Approved Design:

New Retaining Wall Structures to reinforce/reinstate the riverbank below Coast Road

Construction of parallel driven rail-iron and concrete bollard retaining walls



Construction Stage 1:

Install rip-rap footing,
backfill with excavated
beach material to form
a working platform for
retaining wall
construction activities

Rip-rap footing



Construction Stage 2:

Construct Retaining Wall then backfill with locally sourced material

- Protects the riverbank against further erosion

Driven rail-iron and concrete bollard retaining walls

Rip-rap footing

