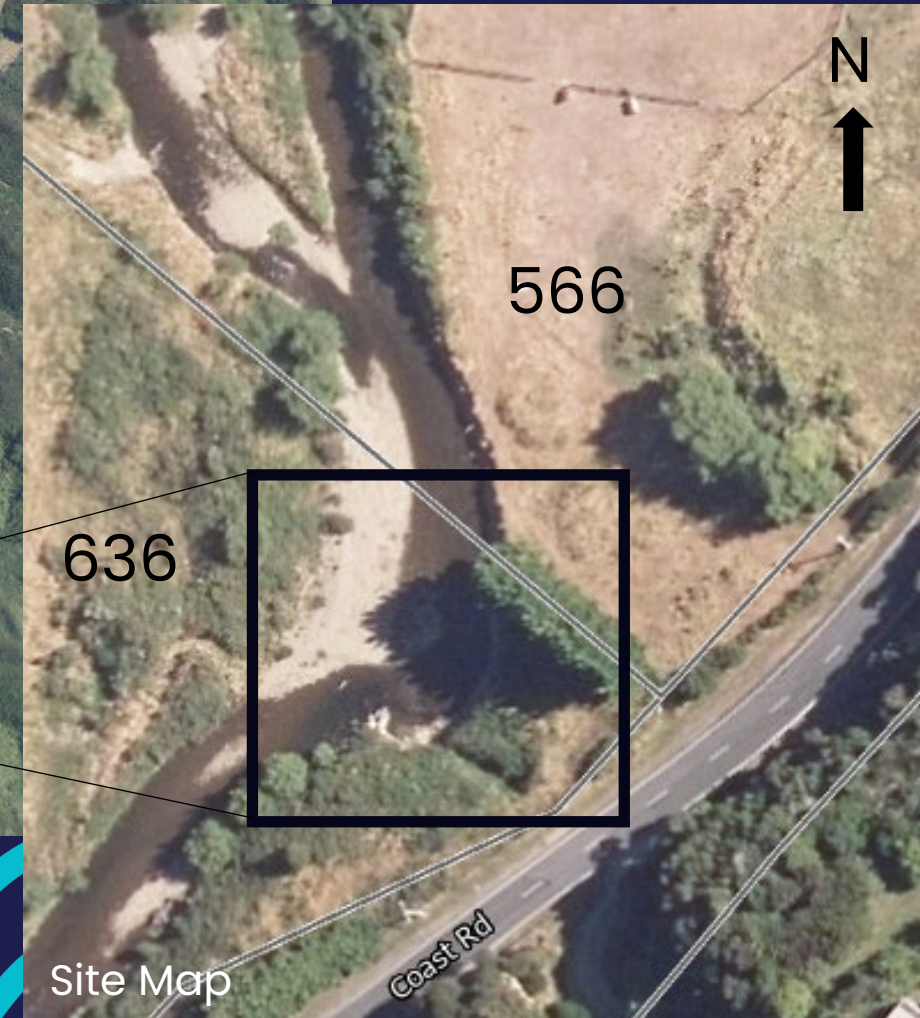
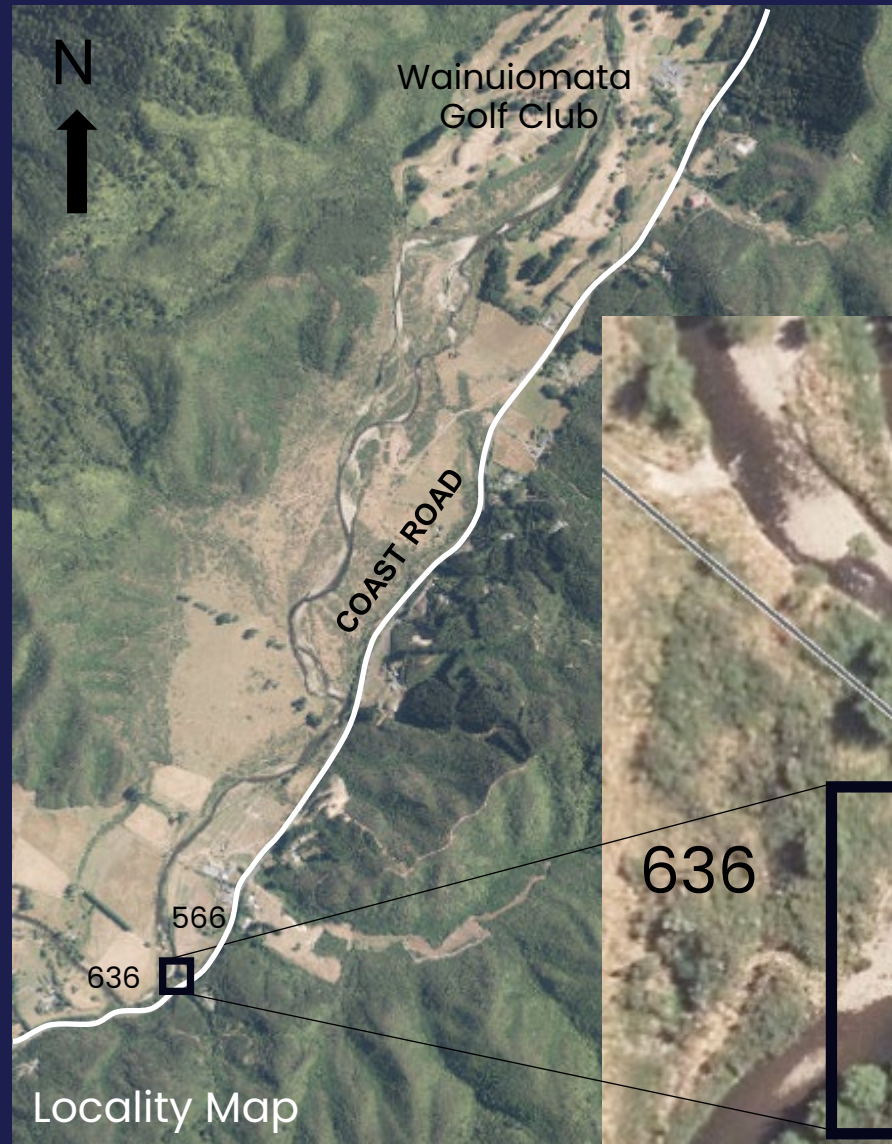


# Coast Road River Erosion Mitigation Works

## August 2024 Update

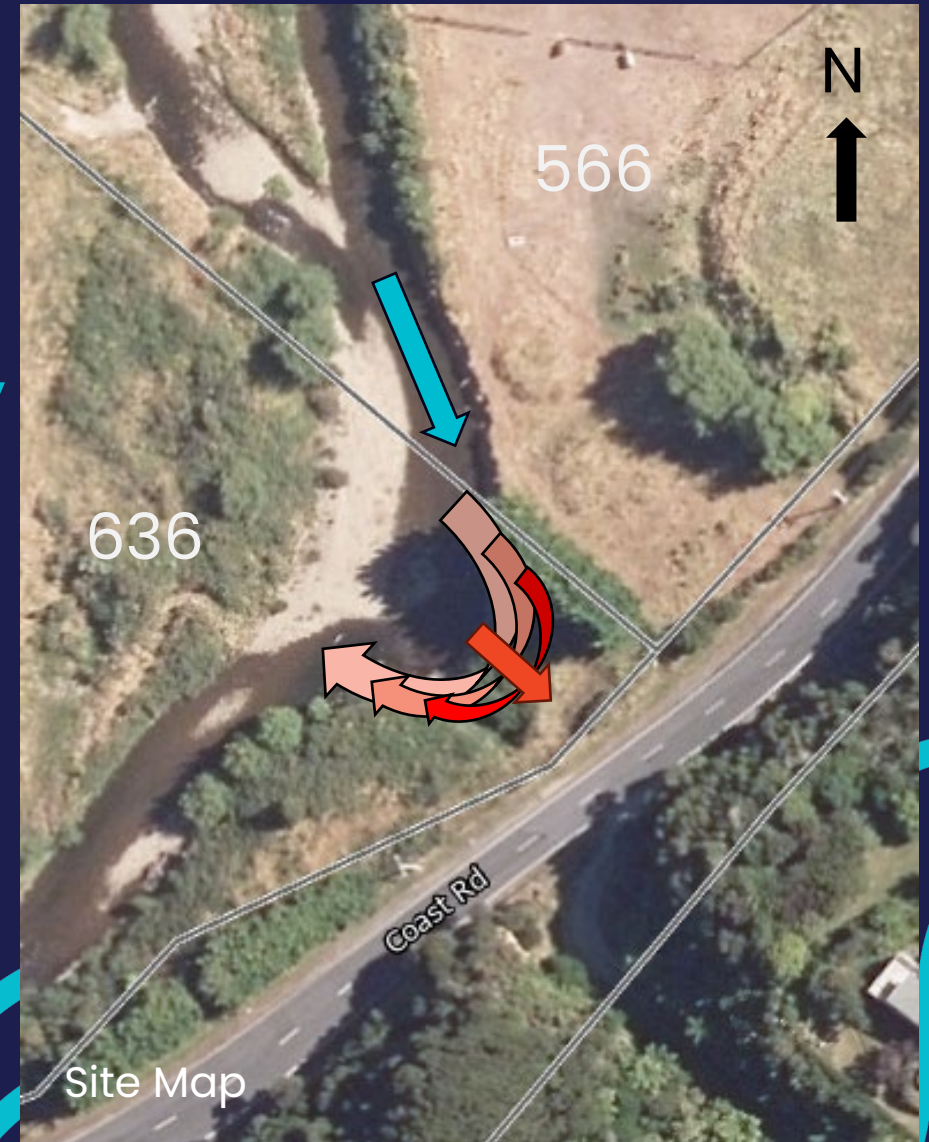
- Site 566/636 Works currently in progress
- River Berm Excavation
- Retaining Wall Construction
- Site 204 to be deferred

8/4/2022



**Recap #566/636:**

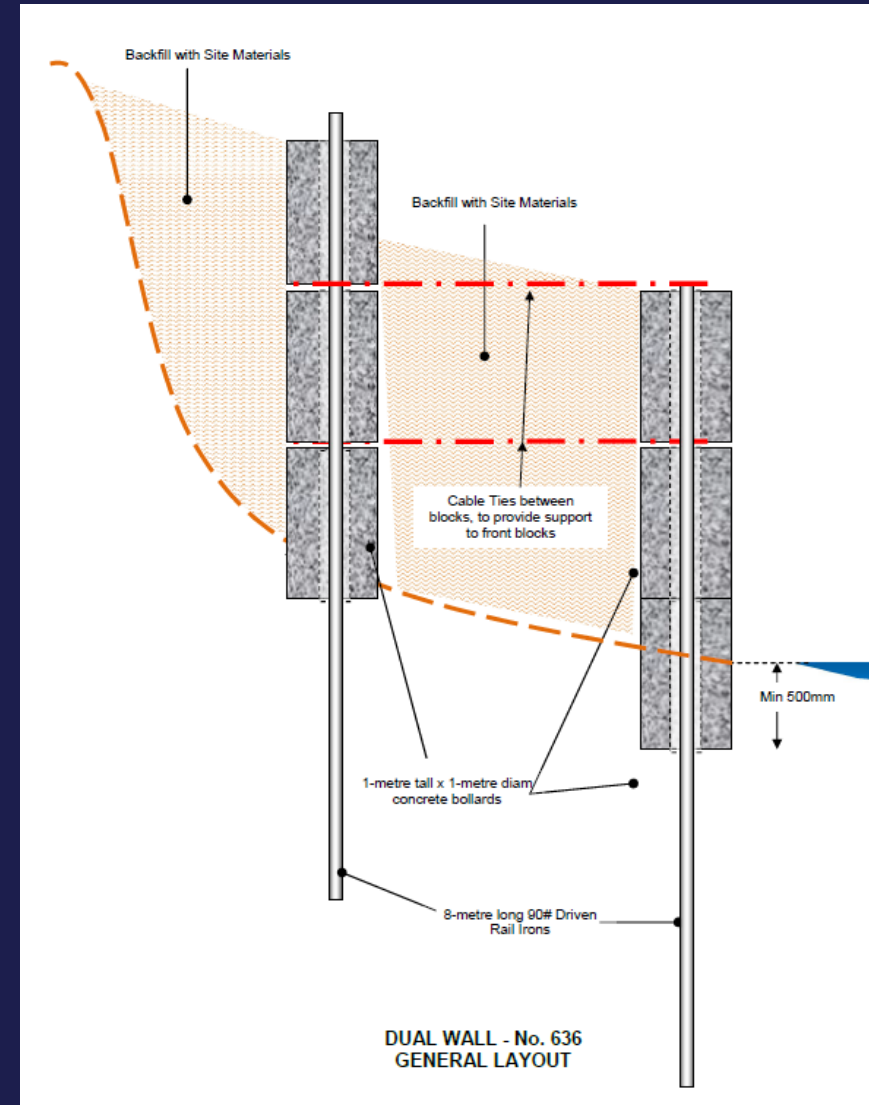
**Wainuiomata River erosion is progressively migrating toward Coast Road**



# Recap:

## Approved Solution -Retaining Walls

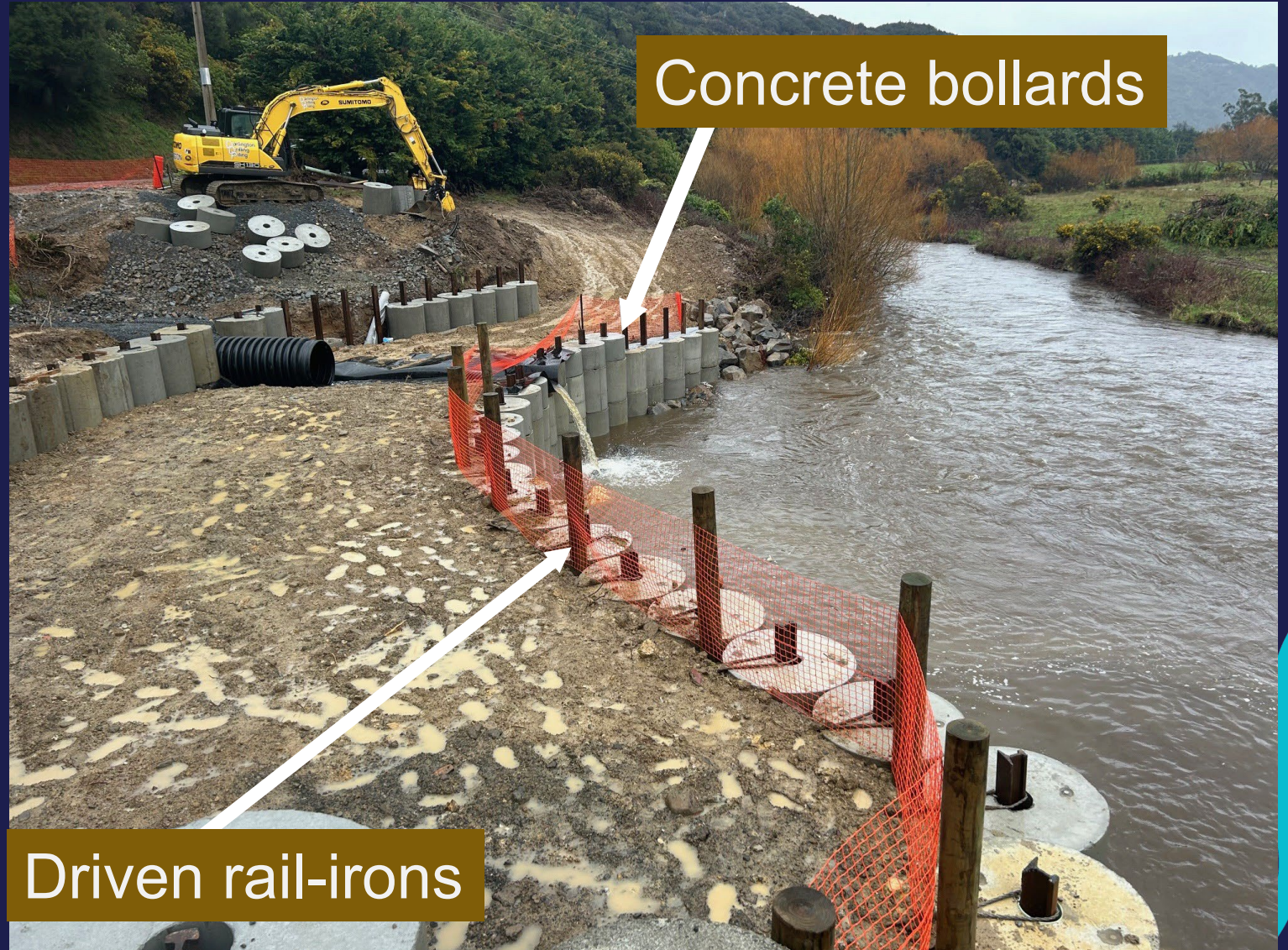
Construction of erosion mitigation measures – hard fill material and retaining wall structures



# Construction Status:

566 & 636  
Coast Rd Site

Site will be left in  
a tidy, stable  
condition until  
works  
recommence



Concrete bollards

Driven rail-irons

# 636/566 Remaining Works:

- Completion of Walls
- Relocation of river channel material

Channel excavation deferred beyond this year's fish-spawning season ie post-spring



## Recap #204:

- Migration of channel further into 204 Coast Rd



# 204 Remaining Works:

- Excavation of western river berm
- Reinforcement of existing bank protection

Channel excavation deferred beyond this year's fish-spawning season ie post-spring

