

Wainuiomata Hill Landslide Remediation

XX/XX/2024

The bottom right corner of the slide features several thick, light blue wavy lines that resemble topographical contours or a stylized landscape element, set against the dark blue background.

Programme of Works



Programme

- Works are expected to take 3 months
- Duration has been extended due to working hours



Planned works

- Devegetation and scaling
- Anchor installation and testing
- Mesh installation
- Hydroseeding

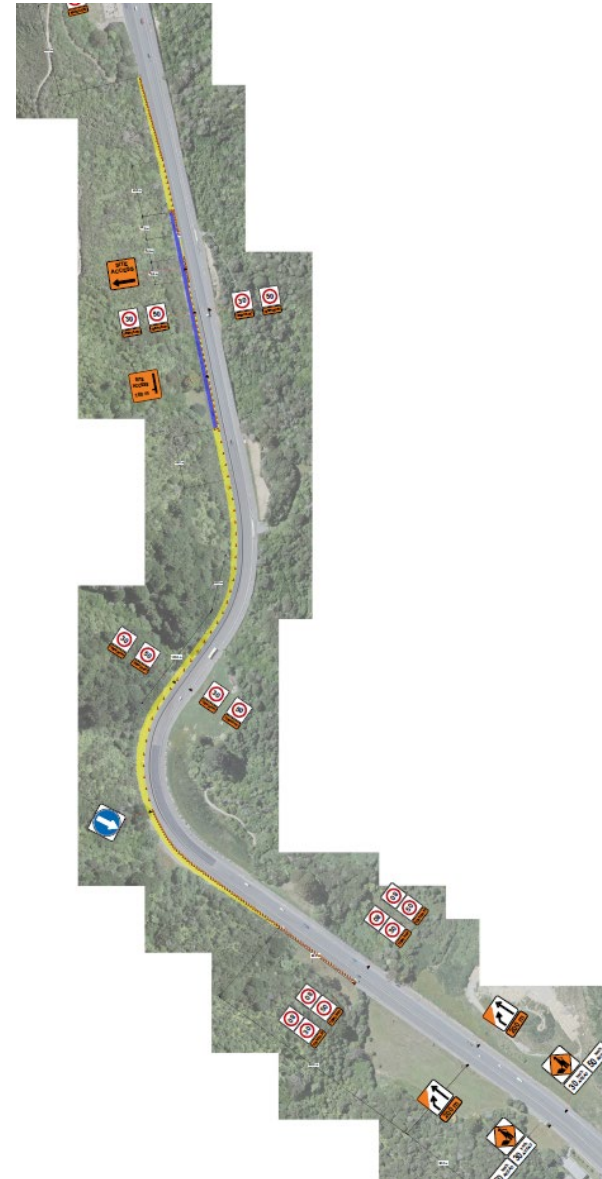


Road Layout



Traffic Management

- Daily set up approx. 9am–8pm
- Hours are subject to change dependent on traffic volumes
- Speed limit reduction
- One lane for vehicles exiting
- Rolling blocks will be used for some activities



Comms and engagement



Tactics

- Community board updates
- Drop-in session 27 April, 2pm-3pm
- Display in the Wainuiomata Hub
- Social media
- Newsletter

