



10 April 2025

Philip Coffey

s7(2)(a)

Dear Philip

Request for Information – Local Government Official Information and Meetings Act (LGOIMA) 1987

We refer to your official information request dated 17 March 2025 for:

“Specific information related to the elevation changes of roading between the corner of Waterloo road and Oxford terrace and 51 Oxford Terrace over the last 50 years.”

Answer:

Please see attached folder containing plans for the construction of the new road layout circa 1988. We can't identify any records indicating changes after that.

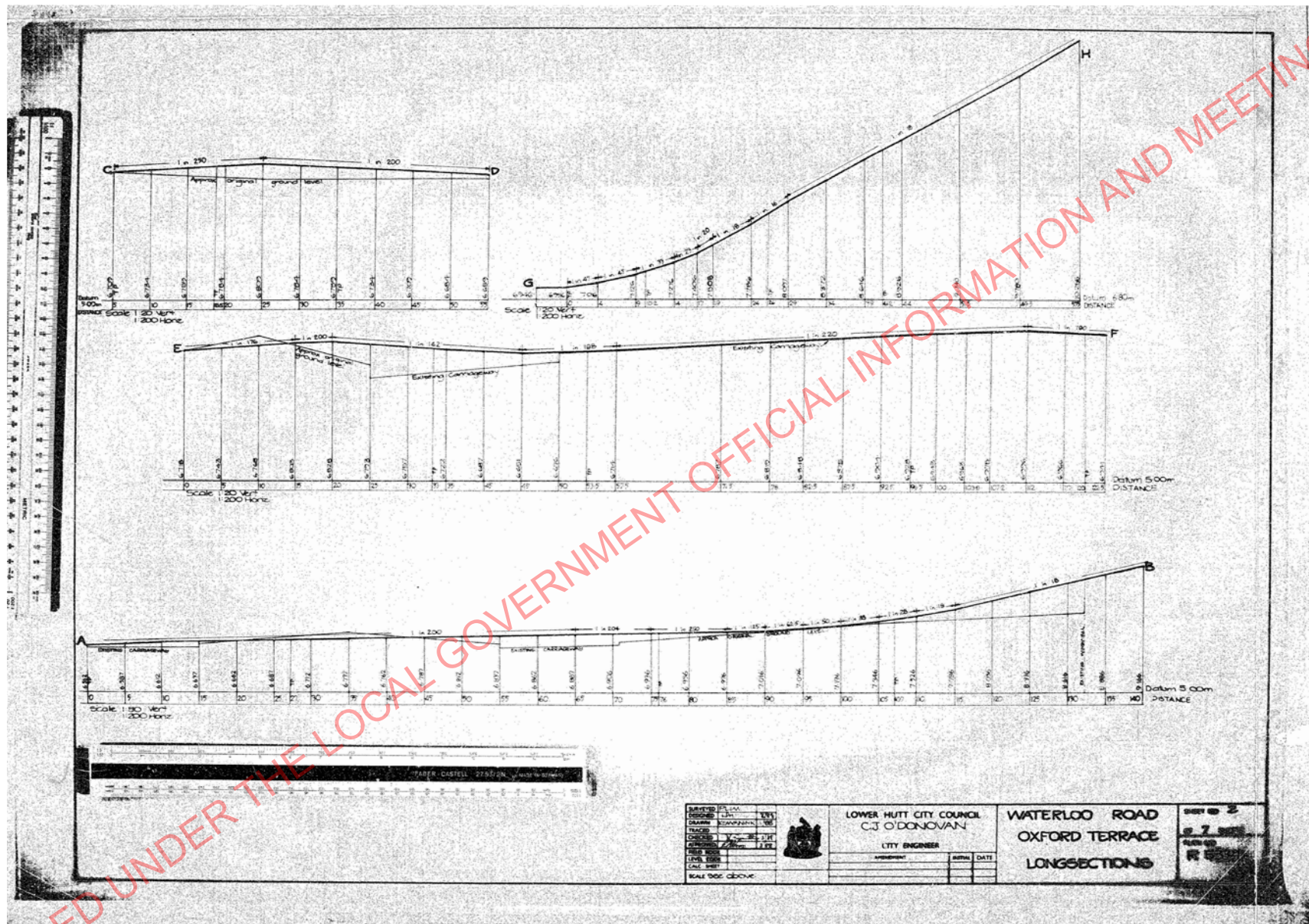
You have the right to seek an investigation and review by the Ombudsman of this decision. Information about how to make a complaint is available at www.ombudsman.parliament.nz or freephone 0800 802 602.

Please note that this response to your information request may be published on Hutt City Council's website. Please refer to the following link: www.huttcity.govt.nz/council/contactus/make-an-official-information-act-request/proactive-releases

Yours sincerely

Lakna Siriwardena

Legal Operations Advisor



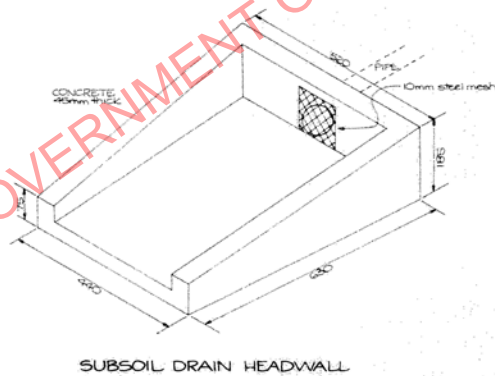
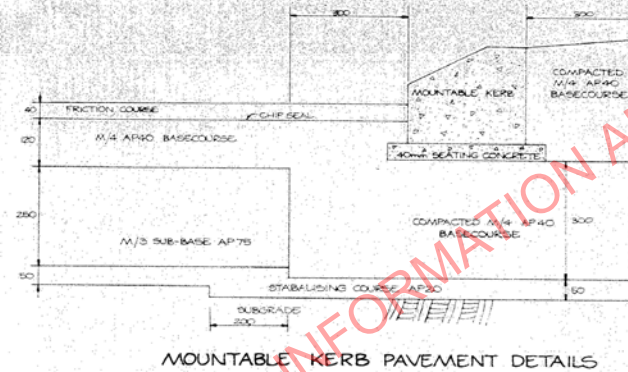
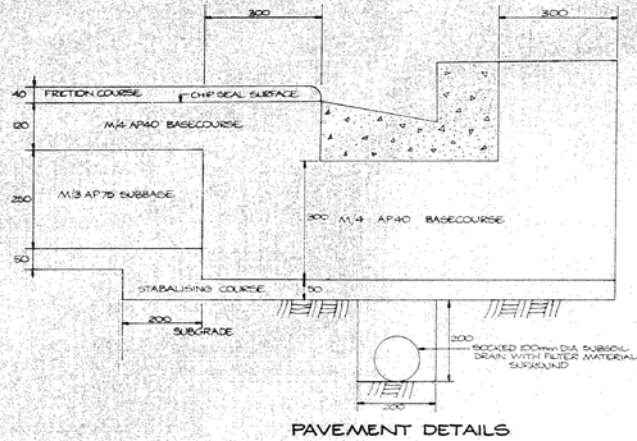
DESIGNED BY	DATE
DRAWN BY	DATE
CHECKED BY	DATE
APPROVED BY	DATE
SCALE	DATE



LOWER HUTT CITY COUNCIL
C.J. O'DONOVAN
CITY ENGINEER

WATERLOO ROAD
OXFORD TERRACE
LONGSECTIONS

SHEET 2
27.11.88
R.E.



SUBMITTED		
DESIGNED	L.H.	2/8
DRAWN	K. M. H. A. N.	1/8
TRACED		
CHECKED	W. J. H. A. N.	2/8
APPROVED	K. M. H. A. N.	2/8
FIELD NOOK		
LEVEL NOOK		
CALC SHEET		
SCALE	1:5	



LOWER HUTT CITY COUNCIL
C.J. O'DONOVAN
CITY ENGINEER

WATERLOO ROAD
OXFORD TERRACE
DETAIL SHEET

SHEET NO. 3
OF 7 SHEETS
PLAN NO.
R 5536

7
R 5535

R 5536

[illegible][illegible]

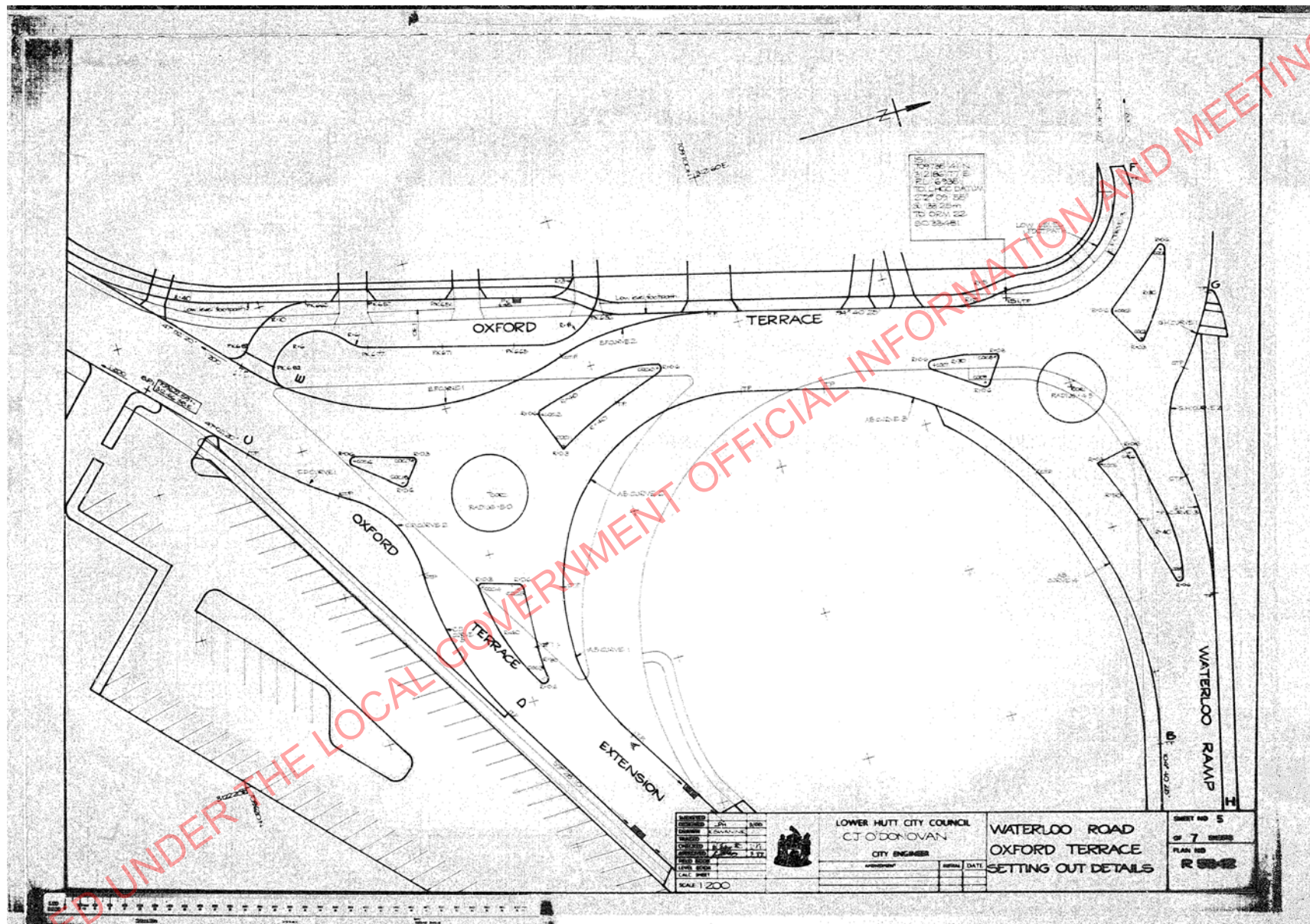
SURVEYED		
DESIGNED	1/24	2/26
DRAWN	S. L. ANGLIS	2/26
PLACED		
CHECKED		
APPROVED		
FIELD BOOK		
LEVEL BOOK		
CALC. SHEET		
SCALE	1" = 100'	Horizontal
	1" = 20'	Vertical



APPENDIX	REF	DATE

WATERLOO ROAD
OXFORD TERRACE
CROSS-SECTIONS

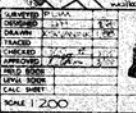
SHEET NO 4
OF 7 SHEETS
PLATE NO
R5333



CURVE 2				CURVE 3		CURVE 4		C-O CURVES		
47° 02' 20"				47° 02' 20"		37° 14' 14"		CURVE 1		
688 088m N				708 206m N		782 078m N		CURVE 2		
18 347m E				19100m E		20 266m E		CURVE 3		
Kerb RL: 6709m				Kerb RL: 6790m				CURVE 1		
50 00m				40 00m		51 00m		CURVE 2		
37° 14' 14"				57° 14' 14"		04° 40' 25"		CURVE 1		
15° 21' 57"				44° 38' 49"		48° 26' 11"		CURVE 2		
7° 40' 58"				22° 16' 55"		22° 48' 06"		CURVE 3		
6745m				6 370m		21 353m		CURVE 1		
637 650m N				724 212m N		743 517m N		CURVE 2		
83 285m E				196 132m E		228 564m E		CURVE 3		
642 390m N				732 575m N		738 108m N		CURVE 1		
86 827m E				210 216m E		249 221m E		CURVE 2		
Kerb RL: 6772m				Kerb RL: 7456m		Kerb RL: existing		CURVE 3		

E-F CURVES				G-H CURVES			
CURVE 1				CURVE 1			
47° 02' 20"				30° 27' 25"			
688 088m N				76 49m N			
18 347m E				72 4m E			
Kerb RL: 6709m				Kerb RL: existing + 675m			
40 00m				15 00m			
342° 47' 59"				104° 40' 25"			
64° 14' 21"				90°			
52° 07' 11"				45°			
25 11m				15 00m			
682 576m N				75 316m N			
185 257m E				18 927m E			
Kerb RL: 6736m				Kerb RL: 7201m			
CURVE 2				CURVE 2			
342° 47' 59"				30° 27' 25"			
64° 14' 21"				76 49m N			
52° 07' 11"				72 4m E			
25 11m				15 00m			
682 576m N				75 316m N			
185 257m E				18 927m E			
Kerb RL: 6736m				Kerb RL: 7201m			
STRAIGHT LINE				CURVE 3			
47° 02' 20"				30° 27' 25"			
688 088m N				76 49m N			
18 347m E				72 4m E			
Kerb RL: 6709m				15 00m			
40 00m				104° 40' 25"			
342° 47' 59"				90°			
64° 14' 21"				45°			
52° 07' 11"				15 00m			
25 11m				75 316m N			
682 576m N				18 927m E			
185 257m E				Kerb RL: 7201m			
Kerb RL: 6736m				CURVE 3			
342° 47' 59"				30° 27' 25"			
64° 14' 21"				76 49m N			
52° 07' 11"				72 4m E			
25 11m				15 00m			
682 576m N				75 316m N			
185 257m E				18 927m E			
Kerb RL: 6736m				Kerb RL: 7201m			

CENTRE OF CURVE FOR TRAFFIC ISLANDS					
+ 7000m		- 32000 E		RADIUS	
0001	756.9	191.1	0.6	100.0	688.0
0002	750.0	187.2	0.6	100.0	673.6
0003	748.2	185.0	0.6	100.0	670.0
0004	746.8	223.0	0.6	100.0	666.4
0005	745.0	211.6	0.6	100.0	662.8
0006	743.5	211.0	0.6	100.0	660.5
0007	742.0	192.8	0.6	100.0	658.5
0008	731.5	194.0	0.6	100.0	654.1
0009	729.1	196.8	0.6	100.0	650.9
CENTRE OF ROUNDABOUT					
0001	T07740.0N		3 2220.0 E	4.5	0.0
0002	T07642.5 N		3 2192.3 E	5.0	0.0



LOWER HUTT CITY COUNCIL
C.J. O'DONOVAN
CITY ENGINEER

APPROVED	INITIAL	DATE

WATERLOO ROAD
OXFORD TERRACE
PROPOSED LAYOUT

SHEET NO. 1
OF 7 SHEETS
PLAN NO.
R 5388